

EAST GOSHEN MUNICIPAL AUTHORITY

January 14, 2013

Monday 7:00 PM

1. CALL TO ORDER/PLEDGE OF ALLEGIANCE/MOMENT OF SILENCE
 - a. Ask if anyone will be taping the meeting?

2. CHAIRMAN'S REPORT/OTHER MEMBERS REPORTS

3. APPROVAL OF MINUTES
 - a. December 10, 2012

4. APPROVAL OF INVOICES

a. Pennoni #530360	\$	4,094.25
b. Pennoni #530361	\$	5,493.75
c. Pennoni #530363	\$	511.50
d. Pennoni # 530362	\$	3,264.75
e. Gawthrop Greenwood	\$	3,289.10

5. LIAISON REPORTS
6. FINANCIAL REPORTS
 - a. December 2012 Report
 - b. Lochwood Plant Costs

7. OLD BUSINESS

8. GOALS
 - a. December Goals

9. NEW BUSINESS
 - a. Meter Replacement Memo
 - b. Easements for Reserve Pump Station Project
 - c. Proposal for Professional Services for Marydell Pump Station
 - d. Proposal for Professional Services for Hershey's Mill Pump Station

10. CAPACITY REQUESTS
 - a.

11. SEWER REPORTS
 - a. Director of Public Works Report
 - b. Pennoni Engineer's Report
 - c. Big Fish Environmental Inc Report with DMR's
 - d. East Goshen Township Flows for December 2012

12. ANY OTHER MATTER

13. CORRESPONDENCE AND REPORTS OF INTEREST
14. PUBLIC COMMENT
15. ADJOURNMENT

Reminder – NEWSLETTER ARTICLE SUBMISSION DUE DATES:

Article Due Date
February 25, 2013

Website Posting Date
April 1, 2013

1
2
3
4
5
6
7
8
9
10
11
12

draft
EAST GOSHEN TOWNSHIP MUNICIPAL AUTHORITY
MEETING MINUTES
December 10, 2012

13
14
15
16
17
18
19
20
21
22

The East Goshen Township Municipal Authority held their regularly scheduled meeting on Monday, December 10, 2012 at 7:00 pm at the East Goshen Township building. Members in attendance were: Chairman Dana Pizarro, Vice Chairman Fran Beck, Jack Yahraes, and Kevin Cummings. Also in attendance were: Rick Smith (Township Manager), Dan Barbato and Tim Daily (Pennoni), Scott Towler (BFES), Walter Wujcik, Conservancy Board and Erich Meyer, Park & Recreation Commission.

23

COMMON ACRONYMS:

24
25
26
27
28
29
30
31
32
33
34
35

<i>BFES – Big Fish Environmental Services</i>	<i>MA- Municipal Authority</i>
<i>BOS – Board of Supervisors</i>	<i>NPDES – National Pollutant Discharge Elimination System</i>
<i>CB – Conservancy Board</i>	<i>PC – Planning Commission</i>
<i>DEP – Department of Environmental Protection</i>	<i>PR – Park & Recreation Board</i>
<i>EPA – Environmental protection Agency</i>	<i>RCSTP – Ridley Creek Sewer Treatment Plant</i>
<i>HC – Historical Commission</i>	<i>SBR – Sequencing Batch Reactor</i>
<i>I&I – Inflow & Infiltration</i>	<i>SSO – Sanitary System Overflow</i>
<i>LCSTP – Lochwood Chase Sewer Treatment Plant</i>	<i>WAS – Waste Activated Sludge</i>

36

Call to Order & Pledge of Allegiance

37
38
39
40
41
42
43
44

Dana called the meeting to order at 7:00 pm and led those present in the Pledge of Allegiance. There was a moment of silence to remember the troops. Dana asked if anyone would be recording the meeting and there was no response.

45

Chairman's Report

46
47
48

1. Kevin attended the West Goshen Sewer Authority meeting on December 5, 2012. They are still disputing the TMDL and other municipalities may do the same.

49

Approval of Minutes

50
51
52

The Chairman noted that the minutes of the November 12, 2012 meeting were approved as corrected.

53

Approval of Invoices

54
55
56
57
58
59
60

1. Jack moved to approve payment of 3 Pennoni invoices:

#527785	\$6,344.75
#527786	\$ 747.00
#527787	\$2,366.50

61
62

Kevin seconded the motion. The motion passed unanimously.

63
64
65

2. Fran moved to approve payment of the Gawthrop Greenwood invoice #103561 for \$1,121.00. Jack seconded the motion. The motion passed unanimously.

66

Liaison Reports

67
68
69
70

1. Conservancy Board – Walter reported the Board is getting pricing for trees to be planted along E. Boot Road near the Plank House. They will be planted in the Spring. The Board is getting fencing to protect the trees in Supplee Valley East from deer.

1
2 **Financial Reports**

3 1. Jon Altshul, CFO, provided reports with the following comment: The Municipal
4 Authority recorded \$18,832 in expenses and \$41,069.24 in revenues (primarily from a \$41,066
5 transfer from the Sewer Operating Fund) in the month of November, a difference of \$22,237.24.
6 The fund balance is now \$59,276.05.

7 Note that the beginning of the month fund balance for November as provided in the
8 attached financial report is \$12 less than was reported to you as a month end fund balance in last
9 month's report. This is due to a wire transfer fee that had not been recorded when we did last
10 month's report. Also, please be aware that we are in the process of moving the Municipal
11 Authority's bank account with Beneficial (which has a balance of \$33,193.71) to DNB First
12 Bank beginning January 1, 2013, because Beneficial will begin charging a monthly maintenance
13 fee that will exceed any interest income on all municipal accounts.

14 Finally, please be advised that we will be processing the 4th quarter administrative
15 overhead chargeback to the Municipal Authority in the amount of \$8,391.94 later this week.
16 That charge will show up in the final 2012 financial report next month.

17 Rick mentioned that the Authority will get a breakdown of the overhead charges.
18

19 **Old Business**

20 None
21

22 **Goals**

23 Dana will prepare a report listing the goals for 2013 for the January ABC meeting.
24

25 **New Business**

26 1. The Authority needs to execute the Hershey's Mill Village sewer easement agreement.
27 Jack made a motion to authorize the Chairman and the Secretary of the Municipal Authority to
28 execute the agreement. Fran seconded the motion. The motion passed unanimously.

29 2. The Authority reviewed the proposed fee schedule for 2013 from Pennoni. Kevin
30 made a motion to authorize Pennoni as the Engineer for the Municipal Authority for 2013 with
31 increased rates for the Project Engineer and Graduate Engineer. Fran seconded the motion. The
32 motion passed unanimously.
33

34 **Capacity Requests**

35 1. New Kent – The Authority reviewed the request from New Kent Apartments for
36 sewage flow allocation for the new 12 unit apartment building they propose to construct. Jack
37 moved to approve the request subject to the normal conditions for tap-in fees, etc. Fran
38 seconded the motion. The motion passed unanimously.
39

40 **Sewer Reports**

41 1. **Mark Miller, Director of Public Works**, provided the following report for November:
42 Meters - Have been read on a daily basis with no problems to report. All of the portable
43 flow meters have been installed. They are being read on a weekly basis.
44 CC Collection: All pump stations were visited on a daily basis, routine maintenance was
45 performed.

1 RC Collection: Hunt Country Pump Station was visited on a daily basis. No problems to
2 report.

3 RC Plant: Routine maintenance was performed. The materials for the wet well
4 disconnects arrived and Lenni Electric will schedule the install.

5 Lockwood Plant: PECO shut down the power to the Lockwood plant.

6 Alarms: We responded to a few alarms. All were cleared and all stations put back in
7 service.

8 PA One Calls: We received 73 PA One calls for the month of November.
9

10 2. Dan Barbato, Pennoni, provided the engineer's report:

11 Invoices: Invoices with summaries are provided under separate cover.

12 Ridley Creek Sewage Treatment Plant (RCSTP) – Pennoni submitted a final report to the
13 Authority on troubleshooting phosphorous issues at RCSTP. The report was the result of
14 collaboration between Pennoni, the plant operator, and the Municipal Authority Board,
15 and it was sent to DEP with the Authority's cover letter and the Operator's SOP for the
16 plant.

17 MS4 Submission – DEP requested accurate mapping showing streams and outfalls. We
18 obtained GIS map layers from Chester County and created a new working map showing
19 roads, streams and parcels. We updated the map which can be used by the Township for
20 general mapping needs. We responded to DEP comments on December 5th.

21 Hershey's Mill PS Diversion & Reserve PD Elimination – DEP issued the Water Quality
22 Management Permit for the Hershey's Mill PS Diversion on November 26, 2012. All
23 permits are now in place. We are coordinating with the Township to perform soil
24 borings, including preparation of boring logs, for inclusion in the bid package for use by
25 directional drillers in bidding. Following the borings, the bid package will be finalized
26 and put out to bid.

27 DEP approved the Reserve PS Closure Plan on November 19, 2012. All permits are now
28 in place; however, the GP-5 "Utility Line Stream Crossing" permit does not allow any
29 construction between March 1 and June 15 because the Ridley Creek tributary is a
30 protected water use for trout stocking. We are attempting to obtain a waiver from this
31 requirement from PA Fish and Boat Commission.

32 The Reserve PS plans have been fully revised for the re-aligned sewer to the north side of
33 the pump station and further north of the Schroeder property. An informal plan
34 resubmission was made to the Chester County Conservation District and they determined
35 that the revisions do not warrant a formal resubmission or re-review. An "FYI only"
36 submission will also be made to DEP for their files.

37 We revised the Reserve PS easement exhibits and legal descriptions for the two parcels
38 affected by the sewer realignment.

39 We are also coordinating with the Township to perform borings along the Reserve PS
40 sewer alignment to identify any rock outcroppings. No boring logs or soil classifications
41 are required for these borings.

42 Marydell PS Elimination – We finalized the plans and specifications and solicited the
43 project on PennBID on December 7, 2012. A non-mandatory pre-bid meeting is
44 scheduled for December 19, 2012 at 10:00 am at the Township building. Bids are due
45 January 9, 2013 at 10:00 am with the intent to award the project at the Authority meeting

1 on January 14, 2013. Construction would likely begin in mid to late February, and the
2 contract duration is 120 days.

3 Hershey's Mill Muffin Monster

4 We received shop drawings from the Muffin Monster supplier, which we are currently
5 reviewing.

- 6
7 3. **Big Fish Environmental Services, Inc.**, Scott Towler presented a written report. The
8 following is a summary:

9 Treatment Process Operation

10 During October, there were no exceedances of the final effluent discharge limitations
11 for outfall 001. There was no discharge from outfall 002. The monthly average total
12 phosphorus concentration was reported as 0.44 mg/L as compared to the discharge
13 limitation of 0.5 mg/L. SBRs #1, 3 and 4 were in service during the month of September.
14 SBR #2 remains out of service and is full of mixed liquor solution. The contents are
15 mixed and aerated to prevent odors. After the SBR sludge wasting rates are lowered,
16 transfer of the mixed liquor will be scheduled.

17 Addition of aluminum to the SBRs to assist with phosphorus removal continued.

18 Operation of the actuator valves on the chemical feed lines to the SBRs was observed to
19 remain in the open position when the valve should be closed. The intended design
20 includes opening the valve when SBR enters the desired treatment phase then activating
21 the pump to operate for the desired run time. When the SBR changes treatment phases,
22 the valve closes. As a result, the valves remained opened during several treatment phases
23 providing insufficient control of which SBR was receiving aluminum, volume of
24 aluminum and chosen treatment phase. Gary Roberts from ICI, Siemens Jet Tech SBR
25 process logic controller, was contacted to resolve the issue. On November 19th, plant
26 operators observed someone remotely reviewing the program logic. Gary Roberts
27 reported that he remotely accessed the SBR program and did not observe any issues. On
28 November 20th, the valves were observed to be closed when programmed to be closed.
29 The valve issue appears to have been corrected.

30 As requested by the Municipal Authority, the Interim Report prepared by Pennoni
31 Associates, Inc. was completed on November 19th and was accompanied by the RCSTP
32 SOP. The interim report and SOP were provided to Dave Wolfinger, PADEP.

33 Daily monitoring of the influent and final effluent 24-hour composites samples versus
34 grab samples commenced. The location of the influent composite sampler used to
35 determine the loadings from the community was hanged to the doghouse manhole within
36 the facility fence line. A grab sample of the final effluent flow equalization basin is
37 analyzed daily for total phosphorus. Collection of centrate grab samples for total
38 phosphorus analysis continued.

39 Process Monitoring On-Line Instrumentation: As discussed during the November
40 Authority meeting, two firms were contacted regarding available on-line instrumentation
41 that can provide real time data to assist with process monitoring and control for
42 phosphorus removal. Both systems are reported to provide real time phosphorus analysis
43 that can be integrated into the chemical feed delivery systems to maintain efficient
44 chemical use and desired phosphorus concentrations. During the month, sludge wasting
45 and decanting of sludge holding tanks was ongoing. No supernatant was decanted from
46 the sludge holding tanks during sample collection. Process monitoring sampling and

1 testing included pH, total alkalinity and total solids. Sludge holding tank #1 was placed
2 in service. The level at the beginning of the month was recorded as 1.67 feet and the
3 level at the end of the month was 12.67 feet. The initial total solids concentration was
4 0.58% and ended the month at 0.60% total solids. Sludge holding tank #2 began the
5 month as 0.94% total solids and ended the month at 0.89% total solids. Tank level at the
6 beginning of the month was 15.08 ft and at the end of the month was 7.09 ft.

7 Minor Repairs and Preventative Maintenance: Utility water strainer cap required
8 replacement. The Township replaced the strainer assembly.

9 Technicians Flygt Corp. was on site to provide preventative maintenance for the SBR
10 motive pumps. No maintenance was performed due to incorrect lifting hoists (and
11 weather).

12 The centrifuge remote control panel exhibited an alarm for a failed to open slide gate.

13 Visual inspection noted the slide gate is functioning as intended. The alarm occurs after
14 the machine is shut down suggesting there may be a small air leak to the slide gates.

15 The influent composite sampler controller was returned to Hach Co. for repair. This
16 sampler is located at the influent wet well and used to determine the loadings (community
17 and internal recycle) to the SBRs.

18 Scott noted that phosphorus was in compliance in October and November.

19 Kevin doesn't feel a base line has been set yet. He wants to start with the design basis and
20 make changes from there.

21 Scott pointed out that they are back to regular aluminum sulfate. He explained the
22 operating process and removal of nacardia. He is noticing some seasonal changes and
23 explained how they handle it.

24 Dana asked if the database is building. Scott explained the collection of samples and the
25 results. Tim explained several strategies for removal of phosphorous and feels they are
26 getting the phosphorous out.

27 Kevin feels the sludge age is important. He feels fines may be levied.

28 Rick mentioned that Scott has collected a lot of data since he took over in February 2012.

29 Rick suggested updating the numbers for November and send another letter to Wolfinger
30 stating that 2 months (Oct & Nov) have been good.

31 Kevin wants to replace the Neptune pump with an appropriate size pump, 0-100% or 0-
32 50%, that is easily controllable. Tim said it would cost about \$900. The Authority
33 approved this purchase. Scott provided handouts with information on the Phosphorous
34 control equipment. Kevin asked for references. Scott feels they can get the equipment as
35 a loaner for 3-4 months. Kevin asked Scott to get pricing on multi-port equipment. Scott
36 will have the information at the January 2013 meeting.

37 38 Any Other Matter

39 1. Jack feels West Goshen may form an MS4 committee. Kevin commented that West
40 Goshen wants storm water management to be separate from Municipal Authority when it is
41 required.

42 2. Jack mentioned that Joe McCawley has resigned after many years of service. He said
43 that Joe was the right man at the right time and did a great job with the negotiations with Clinger.

44 3. Jack reminded the other members that new officers take over next month. The
45 newest member will be the Assistant Secretary/Tresurer.
46

1 **Correspondence**

2 1. Dana acknowledged receipt of letter regarding Phase II Applebrook development in
3 Willistown.
4

5
6 **Adjournment**

7 There being no further business, Joe moved to adjourn the meeting. Fran seconded the motion.
8 The motion passed unanimously. The meeting was adjourned at 8:50pm.
9

10 Respectfully submitted,
11

12
13 Ruth Kiefer

14 Recording Secretary



INVOICE

Newark, DE
302-655-4451 Fax: 302-654-2895

Remit Payment To:
Pennoni Associates Inc.
P.O. Box 827328
Philadelphia, PA 19182-7328

East Goshen Municipal Authority
1580 Paoli Pike
West Chester, PA 19380-6199
Attention: Louis F. Smith, Twp Mgr.

Invoice #: 530360
Invoice Date: 12/17/2012
Project: EGMA1107
Project Name: HersheyMill & Reserve PS Div Des Per

For Services Rendered through: 12/9/2012

Revised Reseve PS plans for proposed sewer re-alignment and submitted informal revised plan set to Conservation District for re-approval. Revised Reserve PS easement descriptions and exhibits due to sewer re-alignment. Responded to comments from PADEP on the Reserve PS Closure Plan submission.

Phase : 2 -- Sewer Stakeout and Easements

Total Phase : 2 -- Sewer Stakeout and Easements

Labor : 1,713.75
Expense : 0.00
Phase Total : 1,713.75

Phase : 3 -- Property Boundary Survey Allocation

Total Phase : 3 -- Property Boundary Survey Allocation

Labor : 2,380.50
Expense : 0.00
Phase Total : 2,380.50

Amount Due This Invoice

\$4,094.25

Fee : 60,200.00
Prior Billings : 46,588.25
Current Billings : 4,094.25
Total Billings : 50,682.50

OK RS 1/9/12
S.P.C.T

7426-1000 - \$ 2047.12
7427-1000 \$ 2047.13

Continued on next page...

INVOICES DUE ON RECEIPT. Invoices outstanding over 30 days will have a Service Charge of 1 1/2% per month.

...Continued from previous page

Phase : 2 -- Sewer Stakeout and Easements

Labor Class	<i>Hours/ Units</i>	<i>Rate</i>	<i>Amount</i>
Project Engineer	3.25	93.00	302.25
Senior Surveyor	3.00	87.00	261.00
Associate Engineer	1.00	83.00	83.00
Graduate Engineer	15.25	70.00	1,067.50
Labor Total:	22.50		1,713.75

Total Phase : 2 -- Sewer Stakeout and Easements	Labor :	\$1,713.75
	Expense :	\$0.00

Phase : 3 -- Property Boundary Survey Allocation

Labor Class	<i>Hours/ Units</i>	<i>Rate</i>	<i>Amount</i>
Project Engineer	9.00	93.00	837.00
Graduate Engineer	16.75	70.00	1,172.50
Survey Technician	7.00	53.00	371.00
Labor Total:	32.75		2,380.50

Total Phase : 3 -- Property Boundary Survey Allocation	Labor :	\$2,380.50
	Expense :	\$0.00

Total Project : EGMA1107 -- HersheyMill & Reserve PS Div Des Per	Labor :	\$4,094.25
	Expense :	\$0.00

INVOICES DUE ON RECEIPT. Invoices outstanding over 30 days will have a Service Charge of 1 1/2% per month.

East Goshen Municipal Authority
EGMA1107 Invoice Summary
Invoice Date 12/17/12

Project : Hershey Mill & Reserve PS Diverse Design & Permitting
Pennoni Job No. : EGMA1107
Invoice No. : 530360
Invoice Period : 11/5/2012 to 12/9/2012
Initial Authorization : \$ 60,200.00 **Date :** 7/7/2012
Changes : \$ - **Date :**
Contract Amount : \$ 60,200.00
Previously Invoiced : \$ 46,588.25
Current Invoice : \$ 4,094.25
Invoiced to Date (\$) : \$ 50,682.50
Invoiced to Date (%) : 84%
Remaining Budget (\$) : \$ 9,517.50
Remaining Budget (%) : 16%

Budget by Phase :
Phase No. 01
Phase Name : Hershey Mill & Reserve PS
Phase Budget : \$ 60,200.00
Previousy Invoiced : \$ 46,588.25
Current Invoice : \$ 4,094.25
Invoiced to Date (\$) : \$ 50,682.50
Invoiced to Date (%) : 84%
Remaining Budget (\$) : \$ 9,517.50
Remaining Budget (%) : 16%

Comments : Revised Reserve PS plans for proposed sewer re-alignment and submitted informal revised plan set to Conservation District for re-approval. Revised Reserve PS easement descriptions and exhibits due to sewer re-alignment. Responded to comments from PADEP on the Reserve PS Closure Plan submission.



INVOICE

Newark, DE
302-655-4451 Fax: 302-654-2895

Remit Payment To:
Pennoni Associates Inc.
P.O. Box 827328
Philadelphia, PA 19182-7328

East Goshen Municipal Authority
1580 Paoli Pike
West Chester, PA 19380-6199
Attention: Louis F. Smith, Twp Mgr.

Invoice # : 530361
Invoice Date : 12/17/2012
Project : EGMA1109
Project Name : Marydell Pump Station Diversion

For Services Rendered through: 12/9/2012

Finalized bid plans and specifications; set up project solicitation on PennBID website; scheduled pre-bid meeting including coordination with PennDOT's inspector.

Phase : 1 -- Design

Total Phase : 1 -- Design

Labor : 5,493.75
Expense : 0.00
Phase Total : 5,493.75

Amount Due This Invoice

\$5,493.75

Fee : 45,100.00
Prior Billings : 20,026.50
Current Billings : 5,493.75
Total Billings : 25,520.25

Phase : 1 -- Design

Labor Class	Hours/Units	Rate	Amount
Authority Engineer	2.50	110.00	275.00
Project Engineer	33.75	93.00	3,138.75
Staff Engineer	13.00	85.00	1,105.00
Technical Specialist	2.50	75.00	187.50
Graduate Engineer	11.25	70.00	787.50
Labor Total:	63.00		5,493.75

Total Phase : 1 -- Design

Labor : \$5,493.75
Expense : \$0.00

Total Project : EGMA1109 -- Marydell Pump Station Diversion

Labor : \$5,493.75
Expense : \$0.00

OK RS 1-9-13
7425-1000

INVOICES DUE ON RECEIPT. Invoices outstanding over 30 days will have a Service Charge of 1 1/2% per month.

East Goshen Municipal Authority
 EGMA1109 Invoice Summary
 Invoice Date 12/17/12

Project : Marydell Pump Station Diversion
 Pennoni Job No. : EGMA1109
 Invoice No. : 530361
 Invoice Period : 11/5/2012 to 12/9/2012

Initial Authorization :	\$ 45,100.00	Date :	2/22/2012
Changes :	\$ -	Date :	
Contract Amount :	\$ 45,100.00		
Previously Invoiced :	\$ 20,026.50		
Current Invoice :	\$ 5,493.75		
Invoiced to Date (\$) :	\$ 25,520.25		
Invoiced to Date (%) :	57%		
Remaining Budget (\$) :	\$ 19,579.75		
Remaining Budget (%) :	43%		

Budget by Phase :

Phase No.	01
Phase Name :	Marydell Pump Station
Phase Budget :	\$ 45,100.00
Previousy Invoiced :	\$ 20,026.50
Current Invoice :	\$ 5,493.75
Invoiced to Date (\$) :	\$ 25,520.25
Invoiced to Date (%) :	57%
Remaining Budget (\$) :	\$ 19,579.75
Remaining Budget (%) :	43%

Comments : Finalized bid plans and specifications; set up project solicitation on PennBID website; scheduled pre-bid meeting including coordination with PennDOT's inspector.



INVOICE

Newark, DE
302-655-4451 Fax: 302-654-2895

Remit Payment To:
Pennoni Associates Inc.
P.O. Box 827328
Philadelphia, PA 19182-7328

East Goshen Municipal Authority
1580 Paoli Pike
West Chester, PA 19380-6199
Attention: Louis F. Smith, Twp Mgr.

Invoice # : 530363
Invoice Date : 12/17/2012
Project : EGMA1206
Project Name : Hershey Mill PS Muffin Monster
Desi

For Services Rendered through: 12/9/2012

Reviewed shop drawings from manufacturer.

Phase : **** -- Professional Services

Total Phase : **** -- Professional Services

Labor :	511.50
Expense :	0.00
Phase Total :	511.50

Amount Due This Invoice

511.50

Fee :	12,000.00
Prior Billings :	7,445.30
Current Billings :	511.50
Total Billings :	7,956.80

Phase : **** -- Professional Services

Labor Class	Hours/ Units	Rate	Amount
Project Engineer	5.50	93.00	511.50
Labor Total:	5.50		511.50

Total Phase : **** -- Professional Services

Labor :	\$511.50
Expense :	\$0.00

Total Project : EGMA1206 -- Hershey Mill PS Muffin Monster Desi

Labor :	\$511.50
Expense :	\$0.00

RS 1-9-13

7424 - 7475

East Goshen Municipal Authority
EGMA1206 Invoice Summary
Invoice Date 12/17/2012

Project : Hershey Mill PS Muffin Monster Desi
Pennoni Job No. : EGMA1206
Invoice No. : 530363
Invoice Period : 11/5/2012 to 12/9/2012
Initial Authorization : \$ 12,000.00 **Date :** 2/15/2012
Changes : \$ - **Date :**
Contract Amount : \$ 12,000.00
Previously Invoiced : \$ 7,445.30
Current Invoice : \$ 511.50
Invoiced to Date (\$) : \$ 7,956.80
Invoiced to Date (%) : 66%
Remaining Budget (\$) : \$ 4,043.20
Remaining Budget (%) : 34%

Budget by Phase :

Phase No. *****
Phase Name : Hershey Mill PS
Muffin Monster
Phase Budget : \$ 12,000.00
Previousy Invoiced : \$ 7,445.30
Current Invoice : \$ 511.50
Invoiced to Date (\$) : \$ 7,956.80
Invoiced to Date (%) : 66%
Remaining Budget (\$) : \$ 4,043.20
Remaining Budget (%) : 34%

Comments : Reviewed shop drawings from manufacturer.



INVOICE

Newark, DE
302-655-4451 Fax: 302-654-2895

Remit Payment To:
Pennoni Associates Inc.
P.O. Box 827328
Philadelphia, PA 19182-7328

East Goshen Municipal Authority
1580 Paoli Pike
West Chester, PA 19380-6199
Attention: Louis F. Smith, Twp Mgr.

Invoice #: 530362
Invoice Date: 12/17/2012
Project: EGMA1201
Project Name: 2012 General Services

For Services Rendered through: 12/9/2012

Meetings with operator and Township to review interim compliance report. Finalize report for MA review. Attendance at MA meeting by D. Barbato and T. Daily.

Phase : **** -- Professional Services

Total Phase : **** -- Professional Services

Labor : 3,264.75
Expense : 0.00
Phase Total : 3,264.75

Amount Due This Invoice

\$3,264.75

Fee : 15,000.00
Prior Billings : 9,437.75
Current Billings : 3,264.75
Total Billings : 12,702.50

Phase : **** -- Professional Services

Labor

Class	Hours/ Units	Rate	Amount
Authority Engineer	15.75	110.00	1,732.50
Senior Engineer	13.00	105.00	1,365.00
Project Engineer	0.25	93.00	23.25
Technician II	2.00	72.00	144.00
Labor Total:	31.00		3,264.75

Total Phase : **** -- Professional Services

Labor : \$3,264.75

Expense : \$0.00

Total Project : EGMA1201 -- 2012 General Services

Labor : \$3,264.75

Expense : \$0.00

RS 1-9-13

7424 3130

INVOICES DUE ON RECEIPT. Invoices outstanding over 30 days will have a Service Charge of 1 1/2% per month.

East Goshen Municipal Authority
 EGMA1201 Invoice Summary
 Invoice Date 12/17/12

Project : 2012 General Services
 Pennoni Job No. : EGMA1201
 Invoice No. : 530362
 Invoice Period : 11/5/2012 to 12/9/2012
 Initial Authorization : \$ 15,000.00 Date : 2/22/2012
 Changes : \$ - Date :
 Contract Amount : \$ 15,000.00
 Previously Invoiced : \$ 9,437.75
 Current Invoice : \$ 3,264.75
 Invoiced to Date (\$) : \$ 12,702.50
 Invoiced to Date (%) : 85%
 Remaining Budget (\$) : \$ 2,297.50
 Remaining Budget (%) : 15%

Budget by Phase :
 Phase No. ****
 Phase Name : 2012 General Services
 Phase Budget : \$ 15,000.00
 Previously Invoiced : \$ 9,437.75
 Current Invoice : \$ 3,264.75
 Invoiced to Date (\$) : \$ 12,702.50
 Invoiced to Date (%) : 85%
 Remaining Budget (\$) : \$ 2,297.50
 Remaining Budget (%) : 15%

Comments : Meetings with operator and Township to review interim compliance report. Finalize report for MA review. Attendance at MA meeting by D. Barbato and T. Daily.



Gawthrop Greenwood, PC
Attorneys at Law

17 East Gay Street, Suite 100 | (p) 610-696-8225
West Chester, PA 19381-0562 | (f) 610-344-0922
gglaw@gawthrop.com | www.gawthrop.com

East Goshen Municipal Authority
1580 Paoli Pike
West Chester PA 19380

Page: 1
12/31/2012
Client No: 6604-01M
Invoice No. 104980

General Authority Services

Fees

		Hours
12/03/2012 SAK	File Right of Way Agreement with the Recorder of Deeds.	0.30
12/04/2012 RFA	Review Marydell P.S. bid document package; review message from R Smith regarding comments on bid package; Message to M Ellis and R Smith reporting no comments on bid package; review message from M Ellis identifying additional changes to bid documents for Marydell P.S.; review Marydell advertisement document for bids.	2.20
12/05/2012 RFA	Review messages from M Ellis and M Miller regarding disposition of existing Marydell P.S. force main.	0.40
12/06/2012 RFA	Review message from M Ellis regarding abandoning Marydell force main; review message from B Dion regarding meeting on financial subdivision.	0.60
12/10/2012 RFA	Review messages from R Smith regarding use of as-built plans for dedication of sewer mains at Reserve at Applebrook; Messages to R Smith regarding dedication of Reserve at Applebrook sewer mains.	1.00
12/12/2012 RFA	Review messages from R Smith regarding Willow Pond easement; review Willow Pond response letter and send message to R Smith concurring with terms; Message to R Smith regarding no need for easement agreement revision.	1.00
12/17/2012 SAK	File Sewer Easement with the Recorder of Deeds.	0.30

General Authority Services

12/20/2012		Hours	
RFA	Review message from Rick Smith regarding Marydell bid opening date.	0.30	
	For Current Services Rendered	6.10	1,093.00

Recapitulation

<u>Timekeeper</u>	<u>Hours</u>	<u>Hourly Rate</u>	<u>Total</u>
Robert F. Adams	5.50	\$190.00	\$1,045.00
Stephanie A. Keller	0.60	80.00	48.00

Expenses

Recorder of Deeds - ROW agreement/Goshen Equities	60.00
Recorder of Deeds - Hershey's Mill Sewer Easement	58.00
Total Expenses Thru 12/31/2012	118.00
Previous Balance	\$3,199.10
Total Current Charges	1,211.00

12/13/2012	Cost Expense Payment	-7.10
12/13/2012	Fee Payment	-1,113.90
	Total Payments	-1,121.00
	Balance Due	<u>\$3,289.10</u>

APPROVED AT 12/10/12 MTG

OK RS 1-9-13

7424-3140

To ensure proper credit, please write client number on your check when returning payment. Thank You.
A finance charge of 1.25% per month (15% annually) may be charged on balances not paid 60 days after the invoice date.

Memo

To: Municipal Authority
From: Jon Altshul
Re: December 2012 Financial Report
Date: January 7, 2013

The Municipal Authority recorded \$50,003.96 in revenues and \$47,395.59 in expenses for the month of December, for a surplus of \$2,608.37. For the year, the Authority had \$527,133.12 in revenues and \$503,858.19 in expenses for a surplus of \$23,274.93. The preliminary, unaudited fund balance was \$61,884.42 as of December 31, 2012.

Note that in addition to the quarterly chargeback for administrative wages (\$8,391.94), we also charged back \$1,482.40 in December from the Township's General Fund to the Municipal Authority for labor and equipment costs related to the Lockwood elimination project.

EAST GOSHEN TOWNSHIP
 1580 PAOLI PIKE
 WEST CHESTER, PA
 Municipal Authority
 DECEMBER 2012

Account Title	Acct #	Annual Budget	Month To Date Actual	Year To Date Actual
MUNICIPAL AUTHORITY BEGINNING FUND BALANCE				
			59,276.05	

RCSTP BUDGET

REVENUE				
INTEREST EARNED - RCSTP EXPANSION	07341 1020	0.00	2.69	75.60
GRANT REVENUE	07392 0800	0.00	0.00	0.00
TOTAL REVENUE		0.00	2.69	0.00

EXPENSES				
R.C.-CAP. PROJ.-ENGINEER	07424 7451	0.00	0.00	0.00
R.C. CAP EXPANSION GEN'L CONTRACTOR	07424 7452	0.00	0.00	0.00
R.C. CAP EXPANSION - ELECTRICAL	07424 7453	0.00	0.00	1,228.08
R.C. CAP EXP CONTINGENCY CAPITAL	07424 7454	0.00	0.00	0.00
R.C. CAP EXP CONTINGENCY ONGOING	07424 7455	0.00	0.00	0.00
R.C. CAP EXP ADDITIONAL CONTINGENCY	07424 7456	0.00	0.00	0.00
TRANSFER TO AUTHORITY CAP FUND	07492 0990	0.00	0.00	0.00
TOTAL EXPENSES		0.00	0.00	1,228.08

RCSTP NET RESULT		0.00	2.69	(1,228.08)
-------------------------	--	-------------	-------------	-------------------

EAST GOSHEN TOWNSHIP
1580 PAOLI PIKE
WEST CHESTER, PA
Municipal Authority
DECEMBER 2012

Account Title	Acct #	Annual Budget	Month To Date Actual	Year To Date Actual
OPERATING BUDGET				
REVENUE				
INTEREST EARNINGS	07341 1000	0.00	1.27	22.52
C.C. TAPPING FEES	07364 1100	2,000.00	0.00	0.00
R.C.TAPPING FEES	07364 1110	2,000.00	0.00	4,000.00
CONNECTION FEES - SEWER	07364 1130	0.00	0.00	845.64
MISCELLANEOUS REVENUE	07380 1000	1,000.00	0.00	423.36
TRANSFER FROM SEWER OPERATING	07392 0500	125,000.00	0.00	71,766.00
TOTAL REVENUE		130,000.00	1.27	77,057.52
EXPENSES				
ADMINISTRATIVE WAGES	07424 1400	37,669.00	8,391.94	33,567.76
MISCELLANEOUS EXPENSE	07424 3000	4,162.00	0.00	950.00
MUNIC.AUTH.-AUDITING	07424 3110	8,843.00	0.00	7,900.00
ENGINEERING SERVICES	07424 3130	37,066.00	2,366.50	34,063.00
LEGAL SERVICES	07424 3140	12,485.00	1,121.00	7,164.68
M.C.-DVRFA-DEBT SERVICE	07471 1000	19,600.00	19,600.00	19,600.00
M.C.-DVRFA-INTEREST PAYMN	07472 1000	6,981.00	6,842.00	6,842.00
TOTAL EXPENSES		126,806.00	38,321.44	110,087.44
OPERATING NET RESULT		3,194.00	(38,320.17)	(33,029.92)

EAST GOSHEN TOWNSHIP
1580 PAOLI PIKE
WEST CHESTER, PA
Municipal Authority
DECEMBER 2012

Account Title	Acct #	Annual Budget	Month To Date Actual	Year To Date Actual
CAPITAL BUDGET				
REVENUE				
LOAN PROCEEDS-SEWER PROJECT	07392 0804	0.00	0.00	0.00
TRANSFER FROM SEWER CAP RESERVE	07392 0900	828,000.00	50,000.00	450,000.00
TOTAL REVENUE		828,000.00	50,000.00	450,000.00
EXPENSES				
MARYDELL PUMP STATION - ENGINEER	07425 1000	51,764.00	747.00	17,962.25
MARYDELL PUMP STATION -CONSTRUCTION	07425 2000	170,000.00	0.00	0.00
LOCHWOOD ABANDONMENT ENGINEER	07424 7475	37,553.00	0.00	44,111.30
LOCHWOOD ABANDONMENT CONSTRUCTION	07424 7476	411,000.00	0.00	177,281.48
LOCHWOOD ELIMINATION PHASE 2	07424 7477	0.00	1,482.40	105,987.39
HERSHEY MILL STATION - ENGINEER	07426 1000	29,069.00	3,172.38	24,645.88
HERSHEY MILL STATION - CONSTRUCTION	07426 2000	46,000.00	0.00	0.00
RESERVE PUMP STATION - ENGINEER	07427 1000	29,069.00	3,672.37	22,196.12
RESERVE PUMP STATION - CONSTRUCTION	07427 2000	93,000.00	0.00	0.00
RESERVOIR PUMP STATION - ENGINEER	07428 1000	0.00	0.00	358.25
RESERVOIR PUMP STATION CONSTRUCTION	07428 2000	0.00	0.00	0.00
TOTAL EXPENSES		867,455.00	9,074.15	392,542.67
CAPITAL NET RESULT		(39,455.00)	40,925.85	57,457.33

MUNICIPAL AUTHORITY ENDING FUND BALANCE

61,884.42

MGRP18 run by BRIAN 10 : 47 AM

Acct #	Per	Src	Trx #	Debits	Credits	Beg/End Bal	Date	Check/Ref #	ID #	Name/Description
07341-1000			INTEREST EARNINGS			0.00				
	1201	JE	31221		0.62		02/07/12	INTEREST		INTEREST EARNED JAN. 2012 7100.1000
				0.00	0.62	-0.62				
	1202		31655		0.25		03/14/12	INTEREST		INTEREST EARNED FEB. 2012 7100.1000
				0.00	0.25	-0.87				
	1203		31930		0.56		04/04/12	INTEREST		INTEREST EARNED MARCH 2012 7100.1000
				0.00	0.56	-1.43				
	1204		32293		4.97		05/02/12	INTEREST		INTEREST EARNED APRIL 2012 7100.1000
				0.00	4.97	-6.40				
	1205		32709		6.93		06/05/12	INTEREST		INTEREST EARNED MAY 2012 7100.1000
				0.00	6.93	-13.33				
	1206		33106		7.04		07/03/12	INTEREST		INTEREST EARNED JUNE 2012 7100.1000
				0.00	7.04	-20.37				
	1207		33554		5.80		08/06/12	INTEREST		INTEREST EARNED JULY 2012 7100.1000
				0.00	5.80	-26.17				
	1208		33969		4.04		09/04/12	INTEREST		INTEREST EARNED AUGUST 2012 7100.1000
			34004		4.04		09/06/12	INTEREST		INTEREST EARNED AUGUST 2012 07 FUND
			34114	4.04			09/14/12	REVERSE		REVERSE TRX. 33969 - DUPLICATE ENTRY
				4.04	8.08	-30.21				
	1209		34398		2.36		10/02/12	INTEREST		INTEREST EARNED SEPTEMBER 2012 7100.1000
				0.00	2.36	-32.57				
	1210		34816		0.30		11/05/12	INTEREST		INTEREST EARNED OCTOBER 2012 07 FUND
			34971	12.00			11/16/12	BANK FEE		WIRE FEE 10/26/12
				12.00	0.30	-20.87				
	1211		35181		0.38		12/04/12	INTEREST		INTEREST EARNED NOVEMBER 2012 07100.1000
				0.00	0.38	-21.25				

MGRP18 run by BRIAN 10 : 47 AM

Acct #	Per	Src	Trx #	Debits	Credits	Beg/End Bal	Date	Check/Ref #	ID #	Name/Description
07341-1000	1212	JE	35618		1.27		01/04/13	INTEREST		INTEREST EARNED DECEMBER 2012 07 FUND
				0.00	1.27	-22.52				
				16.04	38.56	-22.52				
07341-1020	INTEREST EARNED - RCSTP EXPANSION					0.00				
1201			31222		0.40		02/07/12	INTEREST		INTEREST EARNED JAN. 2012 7105.1000
			31223		7.80		02/07/12	INTEREST		INTEREST EARNED JAN. 2012 7109.2000
			31270		0.05		02/09/12	INTEREST		INTEREST EARNED JAN. 2012 7105.1500
				0.00	8.25	-8.25				
1202			31656		0.30		03/14/12	INTEREST		INTEREST EARNED FEB. 2012 7105.1000
			31657		7.30		03/14/12	INTEREST		INTEREST EARNED FEB. 2012 7109.2000
				0.00	7.60	-15.85				
1203			31931		0.15		04/04/12	INTEREST		INTEREST EARNED MARCH 2012 7105.1000
			31932		9.54		04/04/12	INTEREST		INTEREST EARNED MARCH 2012 7109.2000
				0.00	9.69	-25.54				
1204			32294		0.14		05/02/12	INTEREST		INTEREST EARNED APRIL 2012 7105.1000
			32295		9.52		05/02/12	INTEREST		INTEREST EARNED APRIL 2012 7109.2000
				0.00	9.66	-35.20				
1205			32710		0.14		06/05/12	INTEREST		INTEREST EARNED MAY 2012 7105.1000
			32711		9.55		06/05/12	INTEREST		INTEREST EARNED MAY 2012 7109.2000
				0.00	9.69	-44.89				
1206			33107		0.15		07/03/12	INTEREST		INTEREST EARNED JUNE 2012 7105.1000
			33108		9.52		07/03/12	INTEREST		INTEREST EARNED JUNE 2012 7109.2000
				0.00	9.67	-54.56				
1207			33555		0.14		08/06/12	INTEREST		INTEREST EARNED JULY 2012 7105.1000
			33556		6.34		08/06/12	INTEREST		INTEREST EARNED JULY 2012 7109.2000

MGRP18 run by BRIAN 10 : 47 AM

Acct #	Per	Src	Trx #	Debits	Credits	Beg/End Bal	Date	Check/Ref #	ID #	Name/Description
				0.00	6.48	-61.04				
1208		33970			0.15		09/04/12	INTEREST		INTEREST EARNED AUGUST 2012 7105.1000
		34005			2.76		09/06/12	INTEREST		INTEREST EARNED AUGUST 2012 07 FUND - CONSTRUCTION ACCTS.
		34115		0.15			09/14/12	REVERSE		REVERSE TRX.33970 DUPLICATE ENTRY
				0.15	2.91	-63.80				
1209		34399			0.14		10/02/12	INTEREST		INTEREST EARNED SEPTEMBER 2012 7105.1000
		34400			3.08		10/02/12	INTEREST		INTEREST EARNED SEPTEMBER 2012 7109.2000
				0.00	3.22	-67.02				
1210		34817			3.03		11/05/12	INTEREST		INTEREST EARNED OCTOBER 2012 07 CONSTRUCTION FUND
				0.00	3.03	-70.05				
1211		35182			2.86		12/04/12	INTEREST		INTEREST EARNED NOVEMBER 2012 7105.1000 & 7109.2000
				0.00	2.86	-72.91				
1212		35255			0.36		12/07/12	INTEREST		INTEREST EARNED PARTIAL MONTH DECEMBER 2012
		35619			2.33		01/04/13	INTEREST		INTEREST EARNED DECEMBER 2012 07 MA CONSTRUCTION FUNDS
				0.00	2.69	-75.60				
				0.15	75.75	-75.60				
07364-1110			R.C.TAPPING FEES			0.00				
		1205 RE	32596		2,000.00		05/25/12	32596 1		TAP IN FEE FOR 1636 MANLEY RD
				0.00	2,000.00	-2,000.00				
		1206	32779		2,000.00		06/11/12	32779 1		TAP IN FEE FOR 913 SORRELL HIL R.C.TAPPING FEES
				0.00	2,000.00	-4,000.00				
				0.00	4,000.00	-4,000.00				
07364-1130			CONNECTION FEES - SEWER			0.00				
		1202 CR	31243		423.00		02/08/12	197	6576	1 JACOBS, ROBERT & CHERYL
			31437		423.00		02/27/12	2103	6575	1 STOFFLET, MICHAEL
		JE	31244	141.12			02/08/12	PINE ROCK		ANNUAL PINE ROCK INSTALLMENT
			31438	141.12			02/27/12	PINE ROCK		ANNUAL PINE ROCK INSTALLMENT
				282.24	846.00	-563.76				

MGRP18 run by BRIAN 10 : 47 AM

Acct #	Per	Src	Trx #	Debits	Credits	Beg/End Bal	Date	Check/Ref #	ID #	Name/Description
07364-1130	1203	CR	31489		423.00		03/01/12	730	6574 1	GEORGE SMITH & CHRISTINA CONLE
		JE	31490	141.12			03/01/12	PINE ROCK		ANNUAL PINE ROCK INSTALLMENT
				141.12	423.00	-845.64				
				423.36	1,269.00	-845.64				
07380-1000	MISCELLANEOUS REVENUE					0.00				
	1202		31244		141.12		02/08/12	PINE ROCK		ANNUAL PINE ROCK INSTALLMENT
			31438		141.12		02/27/12	PINE ROCK		ANNUAL PINE ROCK INSTALLMENT
				0.00	282.24	-282.24				
	1203		31490		141.12		03/01/12	PINE ROCK		ANNUAL PINE ROCK INSTALLMENT
				0.00	141.12	-423.36				
				0.00	423.36	-423.36				
07392-0500	TRANSFER FROM SEWER OPERATING					0.00				
	1202		31428		15,000.00		02/24/12	XFER		XFER FROM 5100.1000 TO 7100.1000
				0.00	15,000.00	-15,000.00				
	1203		31612		15,700.00		03/13/12	XFER		XFER FROM 5100.1000 TO 7100.1000 TO COVER MA EXP.
				0.00	15,700.00	-30,700.00				
	1211		34980		41,066.00		11/19/12	DEPOSIT		DEPOSIT FUNDS FROM SEWER OPERATING TO MA OPERATING
				0.00	41,066.00	-71,766.00				
				0.00	71,766.00	-71,766.00				
07392-0900	TRANSFER FROM SEWER CAP RESERVE					0.00				
	1204		32045		100,000.00		04/12/12	XFER		XFER \$ FROM SEWER CAP. RESERVE TO MUN. AUTHORITY GEN. ACCT.
				0.00	100,000.00	-100,000.00				
	1206		32839		100,000.00		06/15/12	XFER		XFER FUNDS TO MA FROM SEWER CAPITAL RES. 5/14/12
				0.00	100,000.00	-200,000.00				
	1207		33176		100,000.00		07/11/12	XFER		XFER \$ FROM SEWER CAPITAL RESERVE TO MA OPERATING
				0.00	100,000.00	-300,000.00				
	1208		33682		100,000.00		08/14/12	XFER		XFER \$ TO MA FROM SEWER CAP. RESERVE
				0.00	100,000.00	-400,000.00				

MGRP18 run by BRIAN 10 : 47 AM

Acct #	Per	Src	Trx #	Debits	Credits	Beg/End Bal	Date	Check/Ref #	ID #	Name/Description
07392-0900	1212	JE	35283		50,000.00		12/11/12	XFER		XFER \$ FROM SEWER CAP.RESERVE TO MA 12/11/12
				0.00	50,000.00	-450,000.00				
				0.00	450,000.00	-450,000.00				
07424-1400	ADMINISTRATIVE WAGES					0.00				
1203	CD	31601		8,391.94			03/13/12	2085	425	EAST GOSHEN TOWNSHIP 1ST QTR.2012 MUNICIPAL AUTHORITY EXPENSES
				8,391.94	0.00	8,391.94				
1206		32849		8,391.94			06/15/12	2094	425	EAST GOSHEN TOWNSHIP 2ND QTR 2012 MUNICIPAL AUTHORITY EXPENSES
				8,391.94	0.00	16,783.88				
1209		34047		8,391.94			09/10/12	2135	425	EAST GOSHEN TOWNSHIP 3RD QTR.2012 MUNICIPAL AUTHORITY EXPENSES
				8,391.94	0.00	25,175.82				
1212		35210		8,391.94			12/05/12	2146	425	EAST GOSHEN TOWNSHIP 4TH QTR. MUNICIPAL AUTH. EXPENSE
				8,391.94	0.00	33,567.76				
				33,567.76	0.00	33,567.76				
07424-3000	MISCELLANEOUS EXPENSE					0.00				
1201		30772		950.00			01/06/12	2081	2132	PENNSYLVANIA MUNICIPAL AUTHORITIES ASSOC 2012 ACTIVE MEMBERSHIP DUES
				950.00	0.00	950.00				
				950.00	0.00	950.00				
07424-3110	MUNIC.AUTH.-AUDITING					0.00				
1207		33171		7,900.00			07/11/12	2103	808	MAILLIE FALCONIERO & CO. EXAMINATION OF FINANCIAL STATEME DECEMBER 31, 2011
				7,900.00	0.00	7,900.00				
				7,900.00	0.00	7,900.00				
07424-3130	ENGINEERING SERVICES					0.00				
1202		31393		220.00			02/22/12	2084	1052	PENNONI ASSOCIATES INC. SERV.THURU 1/15/12 2011 ANNUAL SE

MGRP18 run by BRIAN 10 : 47 AM

Acct #	Per	Src Trx #	Debits	Credits	Beg/End Bal	Date	Check/Ref #	ID #	Name/Description
			220.00	0.00	220.00				
1203		31608	1,182.50			03/13/12	2086	1052	PENNONI ASSOCIATES INC. SERVICES THRU 12/11/12 2011 ANN SERVICES
			1,182.50	0.00	1,402.50				
1204		32043	4,971.75			04/12/12	2088	1052	PENNONI ASSOCIATES INC. SERVICES THRU 3/18/12 2012 GEN.S
			4,971.75	0.00	6,374.25				
1205		32450	14,501.00			05/15/12	2090	1052	PENNONI ASSOCIATES INC. SERVICE THRU 4/15/12 2011 CHAP.9
			14,501.00	0.00	20,875.25				
1206		32809	289.75			06/14/12	2092	1052	PENNONI ASSOCIATES INC. SERVICES THRU 5/13/12 GENERAL SE
			289.75	0.00	21,165.00				
1207		33171	1,142.00			07/11/12	2104	1052	PENNONI ASSOCIATES INC. SERVICE THRU 6/17/12 -GENERAL SE
			1,142.00	0.00	22,307.00				
1208		33676	670.50			08/14/12	2131	1052	PENNONI ASSOCIATES INC. SERVICES THRU 7/15/12 -2012 GENE SERVICES
			670.50	0.00	22,977.50				
1209		34048	448.50			09/11/12	2136	1052	PENNONI ASSOCIATES INC. SERVICES THRU 8/12/12 -2011 CHAP
			448.50	0.00	23,426.00				
1210		34509	2,278.25			10/11/12	2141	1052	PENNONI ASSOCIATES INC. SERV.RENDERED THRU 9/16/12- 2011 CHAPTER 94
			2,278.25	0.00	25,704.25				
1211		34923	5,992.25			11/14/12	2144	1052	PENNONI ASSOCIATES INC. SERVICES THRU 10/14/12 2012 GEN SERVICE
			5,992.25	0.00	31,696.50				
1212		35304	2,366.50			12/11/12	2149	1052	PENNONI ASSOCIATES INC. SERVICES THRU 11/4/12 GEN. SERVI
			2,366.50	0.00	34,063.00				
			34,063.00	0.00	34,063.00				
07424-3140		LEGAL SERVICES			0.00				

MGRP18 run by BRIAN 10 : 47 AM

Acct #	Per	Src Trx #	Debits	Credits	Beg/End Bal	Date	Check/Ref #	ID #	Name/Description
1202	CD	31393	1,825.68			02/22/12	2083	528	GAWTHROP GREENWOOD & HALSTED LEGAL SERV. 12/12/11 - GEN.AUTH.
			1,825.68	0.00	1,825.68				
1204		32043	1,083.00			04/12/12	2087	528	GAWTHROP GREENWOOD & HALSTED LEGAL SERVICE 2/7-2/29/12 GEN.AU
			1,083.00	0.00	2,908.68				
1205		32450	703.00			05/15/12	2089	528	GAWTHROP GREENWOOD & HALSTED LEGAL SERV. 3/12-3/21/12 GEN.AUT
			703.00	0.00	3,611.68				
1207		33171	684.00			07/11/12	2102	528	GAWTHROP GREENWOOD & HALSTED LEGAL SERV. 5/14/12 - GENERAL AU
			684.00	0.00	4,295.68				
1208		33676	475.00			08/14/12	2130	528	GAWTHROP GREENWOOD & HALSTED LEGAL SERV. 7/9/12 - GEN.AUTHORI
			475.00	0.00	4,770.68				
1210		34509	1,273.00			10/11/12	2140	528	GAWTHROP GREENWOOD & HALSTED LEGAL SERVICE 9/7-9/24/12 GEN.AU
			1,273.00	0.00	6,043.68				
1212		35304	1,121.00			12/11/12	2148	528	GAWTHROP GREENWOOD & HALSTED LEGAL SERV.10/2-10/23/12 GEN.AUT
			1,121.00	0.00	7,164.68				
			7,164.68	0.00	7,164.68				
07424-7453	R.C. CAP EXPANSION - ELECTRICAL				0.00				
1206		32809	1,228.08			06/14/12	2091	2696	CLINGER CORP., WM. H. REPAIR TANK MIXER CONTROL CIRCUIT FAULT
			1,228.08	0.00	1,228.08				
			1,228.08	0.00	1,228.08				
07424-7475	LOCHWOOD ABANDONMENT ENGINEER				0.00				
1202		31393	2,600.00			02/22/12	2082	2911	EARTHCORE SERVICES LLC MOBILIZATION, ATV RIG, AUGER PRO LOCKWOOD ENGINEERING
			4,315.00			02/22/12	2084	1052	PENNONI ASSOCIATES INC. SERV.THRU 1/15/12 LCSTP FINAL D
		***	6,915.00	0.00	***				
			6,915.00	0.00	6,915.00				
1203		31608	7,440.50			03/13/12	2086	1052	PENNONI ASSOCIATES INC. SERVICES THRU 12/11/12 LCSTP FI DESIGN

MGRP18 run by BRIAN 10 : 47 AM

Acct #	Per	Src	Trx #	Debits	Credits	Beg/End Bal	Date	Check/Ref #	ID #	Name/Description
				7,440.50	0.00	14,355.50				
1204		32043		1,366.00			04/12/12	2088	1052	PENNONI ASSOCIATES INC. SERVICES THRU 3/18/12 LOCHWOOD
				1,366.00	0.00	15,721.50				
1205		32450		4,124.25			05/15/12	2090	1052	PENNONI ASSOCIATES INC. SERVICES THRU 4/15/12 LCSTP
				4,124.25	0.00	19,845.75				
1206		32809		7,527.25			06/14/12	2092	1052	PENNONI ASSOCIATES INC. SERVICES THRU 5/31/12 TO ACCOMADATE INCREASE IN FLOW TO P
				7,527.25	0.00	27,373.00				
1207		33171		7,009.25			07/11/12	2104	1052	PENNONI ASSOCIATES INC. SERVICE THRU 6/17/12 - LOCHWOOD CHASE PHASE S
				7,009.25	0.00	34,382.25				
1208		33676		3,725.25			08/14/12	2131	1052	PENNONI ASSOCIATES INC. SERVICES THRU 7/15/12 -LOCHWOOD CONSTRUCTION PHASE S
				3,725.25	0.00	38,107.50				
1209		34048		3,985.80			09/11/12	2136	1052	PENNONI ASSOCIATES INC. SERVICES THRU 8/12/12 - HERSH.MI PUMP STATION MUFFIN MONSTER
				3,985.80	0.00	42,093.30				
1210		34509		1,499.00			10/11/12	2141	1052	PENNONI ASSOCIATES INC. SERV.RENDERED THRU 9/16/12 -HM P STATION
				1,499.00	0.00	43,592.30				
1211		34923		519.00			11/14/12	2144	1052	PENNONI ASSOCIATES INC. SERVICES THRU 10/14/12 HERSHY M PS MUFFIN MONSTER
				519.00	0.00	44,111.30				
				44,111.30	0.00	44,111.30				
07424-7476		LOCHWOOD	ABANDONMENT CONSTRUCTION			0.00				
1206		32809		105,473.97			06/14/12	2093	2947	SJM CONSTRUCTION CO. INC. APPLICATION 1 OF CONTRACT
				105,473.97	0.00	105,473.97				
1207		33171		3,826.04			07/11/12	2101	425	EAST GOSHEN TOWNSHIP REIMBURSE GEN.FUND RE: LOCHWOOD PLANT CLOSING - LABOR COSTS AS O 6/30/12

MGRP18 run by BRIAN 10 : 47 AM

Acct #	Per	Src	Trx #	Debits	Credits	Beg/End Bal	Date	Check/Ref #	ID #	Name/Description
07424-7476	1207	CD	33171	42,086.94			07/11/12	2105	2947	SJM CONSTRUCTION CO. INC. APPLICATION #2 - LOCHWOOD CONTRA
			***	45,912.98	0.00	***				
			33173	3,954.36			07/11/12	2106	425	EAST GOSHEN TOWNSHIP REIMBURSE GEN.FUND RE: LOCHWOOD PLANT CLOSING - REGULAR TIME LAB
			33327	15,120.00			07/23/12	2113	800	MACANGA INC. HAUL FILL OUT OF WESTTOWN WAY 18 TONS
			33415	432.00			07/27/12	2116	489	FISHER & SON COMPANY INC 6 BAGS COMMERCIAL SEED MIX
				123.00			07/27/12	2117	61396	HAULER, JACK L. REIMBURSE -1/2 DOG FENCE REPAIR
			***	555.00	0.00	***				
	JE		33635		3,826.04		08/13/12	RECLASS		RECLASS CK.#'S 2101 & 2106 TO LOCHWOOD ELIMINATION PHASE 2
					3,954.36		08/13/12	RECLASS		RECLASS CK.#'S 2101 & 2106 TO LOCHWOOD ELIMINATION PHASE 2
			***	0.00	7,780.40	***				
				65,542.34	7,780.40	163,235.91				
1209	CD		34048	13,632.57			09/11/12	2137	2947	SJM CONSTRUCTION CO. INC. APPLICATION #3 - LOCHWOOD CHASE
			34234	413.00			09/24/12	2139	1876	RANSOME RENTAL COMPANY LP EQUIP.RENTAL 9/5-9/7/12 STANDARD TRACK
				14,045.57	0.00	177,281.48				
				185,061.88	7,780.40	177,281.48				
07424-7477	LOCHWOOD		ELIMINATION PHASE 2			0.00				
	1206		33040	352.68			06/29/12	2095	765	LENNI ELECTRIC CORPORATION SET UP TEMPORARY PUMP - LOCHWOOD
				450.00			06/29/12	2096	2342	POWERPRO EQUIPMENT 50 HYDRATED WHITE - LOCHWOOD PLA CLOSURE
				4,780.00			06/29/12	2097	550	XYLEM DEWATERING SOLUTIONS INC. (GODWIN) GODWIN SUBMERSIBLE PUMP & CONTRO PANEL, HEAVY DUTY LAYFLAT HOSE
			***	5,582.68	0.00	***				
				5,582.68	0.00	5,582.68				
1207			33128	42.50			07/05/12	2100	1065	PETTY CASH TOLLS - TO AND FROM GODWIN PUMPS LOCHWOOD ELIMINATION
			33209	123.87			07/13/12	2107	2936	A ANCHOR TOILETS PORTABLE PORTABLE TOILET RENTAL 6/25-7/24
				4,640.85			07/13/12	2108	827	MARTIN LIMESTONE INC. 95.91 TONS MAG LIMESTONE

MGRP18 run by BRIAN 10 : 47 AM

Acct #	Per	Src Trx #	Debits	Credits	Beg/End Bal	Date	Check/Ref #	ID #	Name/Description
07424-7477	1207	CD 33209	390.00			07/13/12	2109	2342	POWERPRO EQUIPMENT 20 2200 M 95 DUST MA, 40 HYDRATE WHITE LI
			1,265.00			07/13/12	2110	1876	RANSOME RENTAL COMPANY LP RENTAL - STANDARD TRACK - 6/20/1 6/25/12
			1,574.61			07/13/12	2111	1161	REILLY & SONS INC 259.4 GALLONS DIESEL - LOCHWOOD
			256.80			07/13/12	2112	550	XYLEM DEWATERING SOLUTIONS INC. (GODWIN) MALE AND FEMALE ADAPTORS, FEMALE CAM & GROOVE & MALE ADAPTOR
		***	8,251.13	0.00	***				
		33327	3,638.00			07/23/12	2114	1876	RANSOME RENTAL COMPANY LP ARTICULATED TRUCK RENTAL 6/26-6/ 6/25/12
			5,941.45			07/23/12	2115	550	XYLEM DEWATERING SOLUTIONS INC. (GODWIN) 3" X 50' HEAVY DUTY LAYFLAT HOSE
		***	9,579.45	0.00	***				
		33415	174.82			07/27/12	2118	638	HOME DEPOT CREDIT SERVICES TARP & SIGNS - LOCHWOOD
			1,985.24			07/27/12	2119	827	MARTIN LIMESTONE INC. 72.56 TONS MAG LIMESTONE BULK
			423.00			07/27/12	2120	1087	PIPE XPRESS INC. 12X20 PE DBL WALL PIPE
			18,797.00			07/27/12	2121	1876	RANSOME RENTAL COMPANY LP D5 STANDARD TRUCK RENTAL 6/25/12 7/23/12
		***	21,380.06	0.00	***				
		JE 33635	3,826.04			08/13/12	RECLASS		RECLASS CK.#'S 2101 & 2106 TO LOCHWOOD ELIMINATION PHASE 2
			3,954.36			08/13/12	RECLASS		RECLASS CK.#'S 2101 & 2106 TO LOCHWOOD ELIMINATION PHASE 2
		***	7,780.40	0.00	***				
			47,033.54	0.00	52,616.22				
1208	CD	33513	384.00			08/03/12	2122	489	FISHER & SON COMPANY INC 8 BAGS BUILDERS MIX/THROW & GROW GRASS SEED
			661.50			08/03/12	2123	1849	HICKS BROTHERS LLC 147 SMALL BALES OF STRAW
			271.15			08/03/12	2124	739	KNOX EQUIPMENT COMPANY TOWABLE STRAW MULCHER RENT 7/23/ 7/23/12
			3,378.00			08/03/12	2125	1876	RANSOME RENTAL COMPANY LP STANDARD TRACK RENTAL 7/2-7/30/1 7/23/12
			1,368.05			08/03/12	2126	1161	REILLY & SONS INC 186.8 GALLONS DIESEL
		***	6,062.70	0.00	***				
		33667	675.00			08/14/12	2127	827	MARTIN LIMESTONE INC. 48.18 TONS AASHTO #1
		33676	43,397.75			08/14/12	2129	425	EAST GOSHEN TOWNSHIP REIMBURSE GEN.FUND RE: LOCHWOOD PLANT CLOSING - LABOR COSTS AS O 8/12/12

MGRP18 run by BRIAN 10 : 47 AM

Acct #	Per	Src	Trx #	Debits	Credits	Beg/End Bal	Date	Check/Ref #	ID #	Name/Description
07424-7477	1208	CD	33827	381.82			08/22/12	2132	598	HANSON AGGREGATES PENNSYLVANIA LLC 34.87 TONS STONE
				123.50			08/22/12	2133	765	LENNI ELECTRIC CORPORATION DISCONNECT FRO STATION SHUTDOWN
			***	505.32	0.00	***				
			33946	1,148.00			08/31/12	2134	1876	RANSOME RENTAL COMPANY LP BULL DOZER RENTAL 7/18-7/30/12
				51,788.77	0.00	104,404.99				
1209			34095	100.00			09/13/12	2138	739	KNOX EQUIPMENT COMPANY STRAW MULCHER RENTAL 9/6/12
				100.00	0.00	104,504.99				
1212			35507	1,482.40			12/27/12	2150	425	EAST GOSHEN TOWNSHIP REIMBURSE GEN.FUND RE: LOCHWOOD PLANT CLOSING COSTS - 9/1-12/27/
				1,482.40	0.00	105,987.39				
				105,987.39	0.00	105,987.39				
07425-1000			MARYDELL PUMP STATION - ENGINEER			0.00				
1203			31608	810.00			03/13/12	2086	1052	PENNONI ASSOCIATES INC. SERVICES THRU 12/11/12 MARYDELL
				810.00	0.00	810.00				
1204			32043	1,422.00			04/12/12	2088	1052	PENNONI ASSOCIATES INC. SERVICES THRU 3/18/12 MARYDELL P
				1,422.00	0.00	2,232.00				
1206			32809	320.50			06/14/12	2092	1052	PENNONI ASSOCIATES INC. SERVICES THRU 5/13/12 MARYDELL
				320.50	0.00	2,552.50				
1207			33171	707.25			07/11/12	2104	1052	PENNONI ASSOCIATES INC. SERVICE THRU 6/17/12 - MARYDELL
				707.25	0.00	3,259.75				
1208			33667	1,100.00			08/14/12	2128	1248	SHAINLINE EXCAVATING INC HYDRO EXCAVATOR RENTAL 7/18/12
			33676	2,976.25			08/14/12	2131	1052	PENNONI ASSOCIATES INC. SERVICES THRU 7/15/12 - MARYDELL
				4,076.25	0.00	7,336.00				
1209			34048	6,890.75			09/11/12	2136	1052	PENNONI ASSOCIATES INC. SERVICES THRU 8/12/12 - MARYDELL
				6,890.75	0.00	14,226.75				
1210			34509	1,164.75			10/11/12	2141	1052	PENNONI ASSOCIATES INC. SERV.RENDERED THRU 9/16/12 MARYD PUMP STATION

MGRP18 run by BRIAN 10 : 47 AM

Acct #	Per	Src	Trx #	Debits	Credits	Beg/End Bal	Date	Check/Ref #	ID #	Name/Description
07425-1000	1210	CD	34540	100.00			10/15/12	2142	2960	COMMONWEALTH OF PENNSYLVANIA PERMIT FEE
				1,264.75	0.00	15,491.50				
	1211		34923	1,723.75			11/14/12	2144	1052	PENNONI ASSOCIATES INC. SERVICES THROUGH 10/14/12 -MARYD
				1,723.75	0.00	17,215.25				
	1212		35304	747.00			12/11/12	2149	1052	PENNONI ASSOCIATES INC. SERVICES THRU 11/4/12 MARYDELL P
				747.00	0.00	17,962.25				
				17,962.25	0.00	17,962.25				
07426-1000						0.00				HERSHEY MILL STATION - ENGINEER
	1203		31608	2,336.75			03/13/12	2086	1052	PENNONI ASSOCIATES INC. SERVICES THRU 12/11/12 HERSHEY
				2,336.75	0.00	2,336.75				
	1205		32450	2,917.50			05/15/12	2090	1052	PENNONI ASSOCIATES INC. SERVICE THRU 4/15/12 HERSHEY MIL
				2,917.50	0.00	5,254.25				
	1206		32809	498.50			06/14/12	2092	1052	PENNONI ASSOCIATES INC. SERVICES THRU 5/13/12 HERSHEY MI
			33047	250.00			06/29/12	2099	263	CHESTER COUNTY CONSERVATION DISTRICT PERMIT FEE HM PS PROJECT
				748.50	0.00	6,002.75				
	1207		33171	4,112.75			07/11/12	2104	1052	PENNONI ASSOCIATES INC. SERVICE THRU 6/17/12 - HERSHEY M
				4,112.75	0.00	10,115.50				
	1208		33676	2,924.25			08/14/12	2131	1052	PENNONI ASSOCIATES INC. SERVICES THRU 7/15/12 - H.MILL
				2,924.25	0.00	13,039.75				
	1210		34509	3,385.25			10/11/12	2141	1052	PENNONI ASSOCIATES INC. SERV.RENDERED THRU 9/16/12 HER.M
				3,385.25	0.00	16,425.00				
	1211		34923	5,048.50			11/14/12	2144	1052	PENNONI ASSOCIATES INC. SERVICES THRU 10/14/12 HERSHY M PS
				5,048.50	0.00	21,473.50				
	1212		35304	3,172.38			12/11/12	2149	1052	PENNONI ASSOCIATES INC. SERVICES THRU 11/4/12 HERSH.MILL
				3,172.38	0.00	24,645.88				

MGRP18 run by BRIAN 10 : 47 AM

Acct #	Per	Src Trx #	Debits	Credits	Beg/End Bal	Date	Check/Ref #	ID #	Name/Description
			24,645.88	0.00	24,645.88				
07427-1000					0.00				
	1203	31608	605.00			03/13/12	2086	1052	PENNONI ASSOCIATES INC. SERVICES THRU 12/11/12 RESERVE
			605.00	0.00	605.00				
	1204	32043	472.50			04/12/12	2088	1052	PENNONI ASSOCIATES INC. SERVICES THRU 3/18/12 RESERVE PU
			472.50	0.00	1,077.50				
	1205	32450	2,917.50			05/15/12	2090	1052	PENNONI ASSOCIATES INC. SERVICE THRU 4/15/12 RESERVE PS
			2,917.50	0.00	3,995.00				
	1206	33047	250.00			06/29/12	2098	263	CHESTER COUNTY CONSERVATION DISTRICT PERMIT FEE RESERVE PS PROJECT
			250.00	0.00	4,245.00				
	1207	33171	1,062.50			07/11/12	2104	1052	PENNONI ASSOCIATES INC. SERVICE THRU 6/17/12 - RESERVE P STATION
			1,062.50	0.00	5,307.50				
	1208	33676	2,924.25			08/14/12	2131	1052	PENNONI ASSOCIATES INC. SERVICES THRU 7/15/12 - RESERVE
			2,924.25	0.00	8,231.75				
	1209	34048	358.25			09/11/12	2136	1052	PENNONI ASSOCIATES INC. SERVICES THRU 8/12/12 - HERS.MIL RESERVE PUMP PS
			358.25	0.00	8,590.00				
	1210	34509	3,385.25			10/11/12	2141	1052	PENNONI ASSOCIATES INC. SERV.RENDERED THRU 9/16/12 RESER
		34706	1,000.00			10/26/12	2143	1496	WILLIAM WOOD CO. REAL ESTATE APPRAISAL - PART OF PARCEL #53-2-20.39
			4,385.25	0.00	12,975.25				
	1211	34923	5,048.50			11/14/12	2144	1052	PENNONI ASSOCIATES INC. SERVICES THRU 10/14/12 RESERVE
			500.00			11/14/12	2145	1496	WILLIAM WOOD CO. REAL ESTATE APPRAISAL - PROPOSED SEWER EASEMENT AREA
		***	5,548.50	0.00	***				
			5,548.50	0.00	18,523.75				
	1212	35304	3,172.37			12/11/12	2149	1052	PENNONI ASSOCIATES INC. SERVICES THRU 11/4/12 RESERVE PS

MGRP18 run by BRIAN 10 : 47 AM

Acct #	Per	Src Trx #	Debits	Credits	Beg/End Bal	Date	Check/Ref #	ID #	Name/Description
07427-1000	1212	CD 35543	500.00			12/31/12	2151	1496	WILLIAM WOOD CO. REAL ESTATE APPRAISAL - 929 FORE
			3,672.37	0.00	22,196.12				
			22,196.12	0.00	22,196.12				
07428-1000		RESERVOIR PUMP STATION - ENGINEER			0.00				
1209	34048		358.25			09/11/12	2136	1052	PENNONI ASSOCIATES INC. SERVICES THRU 8/12/12 - HERS.MIL RESERVE PUMP PS
			358.25	0.00	358.25				
			358.25	0.00	358.25				
07471-1000		M.C.-DVRFA-DEBT SERVICE			0.00				
1212	35304		19,600.00			12/11/12	2147	430	EAST GOSHEN TWP - SEWER MA ANNUAL REIMBURSEMENT 28% LOAN
			19,600.00	0.00	19,600.00				
			19,600.00	0.00	19,600.00				
07472-1000		M.C.-DVRFA-INTEREST PAYMN			0.00				
			6,842.00			12/11/12	2147	430	EAST GOSHEN TWP - SEWER MA ANNUAL REIMBURSEMENT 28% LOAN
			6,842.00	0.00	6,842.00				
			6,842.00	0.00	6,842.00				
Beg Bal		0.00	512,078.14	535,353.07	-23,274.93				

Memo

To: Municipal Authority

From: Tia Piccolo

Date: December 27, 2012

Re: Lochwood Plant Closing Labor Costs as of 12/27/12

Please note that from 9/1/12 - 12/27/12, \$1,482.40 has been reported in labor and equipment costs related to the closing of the Lochwood Plant.

We recommend that the Municipal Authority approve these charges.

Employees	Reg	OT
Total Hours	39	0
Total Cost	1,163.69	0

Equipment	
Total Hours	7
Total Cost	318.71

JANUARY 2013
EAST GOSHEN MUNICIPAL AUTHORITY GOALS

ON-GOING

1. Submit an article for each newsletter.
 - a. Need by 2/8/13
 - b. Need by 5/10/13
 - c. Need by 8/2/13
 - d. Need by 11/8/13

2. Attend West Goshen Meetings quarterly – more often if needed.
 - a. 1st Quarter (March)
 - b. 2nd Quarter (June)
 - c. 3rd Quarter (September)
 - d. 4th Quarter (December)

3. Respond to capacity requests in 45 days or less.

4. Implement I & I Plan

PROJECTS

1. Lockwood – Final Restoration

2. Marydell Pump Station – Construction

3. Hershey Mill Pump Station – Construction

4. Reserve Pump Station – Construction

5. Borrowing – Reimburse Capital Reserve for design and construction funds.

EAST GOSHEN MUNICIPAL AUTHORITY
EAST GOSHEN TOWNSHIP
1580 PAOLI PIKE, WEST CHESTER, PA 19380-6199

January 11, 2013

To: Municipal Authority

From: Mark Miller

Re: Meter Replacement

I would like your approval to replace three of the flow meters; two on the C.C. Collection system and one on the C.C. Interceptor.

These three in question have been in service for seventeen years. The problem we have is getting replacement parts. We have been taking parts from old meters for repairs. The meters have been fully depreciated in the sinking fund.

The price for the meters includes an optional data logger to allow storage of flow trends which can be downloaded to a flash drive.

Below are the cost breakdown for each meter:

Ellis Lane Meter -	\$5,235.00
Hicks Meter -	\$5,265.00
(Interceptor Line)	
Paoli Pike -	\$5,135.00
Total Cost-	\$15,635.00

The new meters could be placed in service in about 5 weeks.

Memo
East Goshen Township
1580 Paoli Pike
West Chester, PA 19380

Voice (610) 692-7171
Fax (610) 425-8950
E-mail rsmith@eastgoshen.org

Date: January 10, 2013
To: Municipal Authority
From: Rick Smith, Township Manager
Re: Easements

There are three sewer easements for the Reserve Pump Station Project that we need to obtain.

Reserve at Spring Meadows HOA - I had an appraisal performed that indicated the 6,815 sq. ft. easement thru their open space was valued at \$1,365 or \$0.20 per sq. ft. We had to move the easement slightly in order to ensure that we would not adversely affect some trees on the Schroder property. This increased the area of the easement to 7,235 sq. ft. The appraiser advised me that I could use the \$0.20 sq. ft. for the larger area. I propose to go back to the HOA with an offer of \$1,455.

Schroeder - I had an appraisal performed that indicated that the easement is valued at \$1,000. I have also indicated to the property owner that the Authority would provide him with a connection (lateral stub) and waive the tapping fee (\$2,000) if and when he connects. Since we are going above what the appraised value is by waiving the tapping fee (we would have to provide the connection in any event) I would like to have the concurrence of the Authority.

Willow Pond HOA - I had an appraisal performed that indicated that the easement that goes thru their open space is valued at \$150. The president of the HOA, advised me that they would accept \$1,000 for the easement and that we needed to indemnify the HOA. I discussed the matter with Bob Adams who advised that it would cost a lot more than \$1,000 to condemn the easement. The indemnification is not a problem. Since we are going above what the appraised value is I would like to have the concurrence of the Authority.

In order to keep the paperwork in order I would request that the Authority approve the following motion: I move that we approve providing a connection to John Schroeder and waive the tapping fee and that we approve compensation in the amount of \$1,000 for the Willow Pond easement and that the Chairman is authorized to execute the easements for The Reserve, Schroeder, and Willow Pond.



January 10, 2013

Recommend for Approval

RS 1-11-13

Rick Smith, Township Manager
East Goshen Township
1580 Paoli Pike
West Chester, PA 19380

Re: Proposal for Professional Services
Marydell Pump Station Diversion Construction Phase Services

Dear Mr. Smith:

Pennoni Associates Inc. is pleased to submit the following proposal for the construction phase services associated with the Marydell Pump Station Diversion.

BACKGROUND

This diversion project was initiated as a result of Pennoni's *Marydell Pump Station Evaluation* memorandum, dated September 24, 2008, which recommended elimination of the pump station. Elimination of the pump station was projected to have a lower capital cost and provide significant life-cycle cost savings compared to replacement of the pump station. The approximately 30-year old pump station has been subject to severe corrosion and failure of discharge piping as well as corrosion of the steel wet well and valve vault. The pump station also lacks metering and back-up power supply. The Marydell Pump Station currently discharges wastewater from 31 single family residences through the Chester Creek Collection System (CCCS), a.k.a. West Goshen Service Area. By diverting the Marydell Pump Station wastewater from the CCCS to the Ridley Creek Collection System (RCCS) and the recently expanded Ridley Creek Sewage Treatment Plant (RCSTP), approximately 6,975 gpd of capacity can be made available under the intermunicipal agreement with West Goshen Township.

Pennoni prepared the *Act 537 Plan Update Revision for the Marydell Pump Station Elimination and Diversion*, last updated October 2011, which was approved by PADEP on December 7, 2011.

Pennoni then prepared the design documents, permit applications, and bid packages. The bid solicitation period began on December 7, 2012. Bids are due February 5, 2013, and a construction contract award is projected to occur on February 11, 2013.

The proposed diversion of the Marydell Pump Station consists of demolition of the existing pump station and construction of approximately 950 feet of gravity sewer extension to an existing gravity sewer on Saratoga Drive near the intersection with Paoli Pike. The diversion requires two state road crossings and one township road crossing.

SCOPE OF WORK

The scope of work for this phase of the project includes construction inspection and office support with specific details as follows.

Construction Inspection: Part-time construction inspection for critical construction activities including:

- Preconstruction meeting
- Tree removal and limited clearing
- Stakeout
- E&S controls installation
- Sewer installation via jack & bore and open cut
- Connections to existing manholes
- Bypass pumping
- Demolition of existing pump station
- Sewer and manhole testing
- Restoration
- Final inspection

We have included a total of 150 hours of inspection time over the four-month project duration.

Office Support: Pennoni's design engineer will provide support on the project with responses to contractor requests for information (RFIs), questions or requests for clarification from the Authority, support of the construction inspector, conducting the preconstruction meeting, review of contractor requests for payment and change order requests, and project closeout documentation. We will also prepare a "construction set" of plans and specifications to incorporate changes that occurred via addenda. Lastly, we will prepare survey control data, coordinates, and limited CAD files for contractor use in stakeout of key features.

FEE

Our estimated fee, to be billed on a time and material basis, is **Twenty Thousand Dollars (\$20,000)**.

Work will be done on an hourly basis, billed at the Authority's approved rates for Pennoni for 2013.

Extraordinary expenses, authorized in advance and identifiable to the specific project will be billed in addition to the above stated fees. These expenses include, but are not limited to: permit application fees, Federal Express and delivery charges, and the reproduction of plans and specifications by outside services. We do not bill for such items as relatively small amounts of in-house printing, mailing expenses, reasonable telephone calls, and travel expenses.

Rick SmithMarydell PS Diversion Construction Phase SupportBILLING AND PAYMENT

Fees will be billed monthly based on actual services completed. Payment is due upon receipt of invoice. Billing and Payment shall be in accordance with Item three (3) of the attached General Terms and Conditions.

The client acknowledges that the method of Billing and Payment has been discussed in detail; that the terms agreed upon can only be changed by a written addendum agreed to by both parties; and work may be stopped until payment is made in accordance with the agreement.

TERMS AND CONDITIONSGeneral

Pennoni Associates Inc. General Terms and Conditions (Form No. LE01, Rev. 09/2002) as approved with our contract with the Authority are considered as part of this proposal.

Special

- a. Revisions to the plans or documents as a result of personal preferences of contractors, reviewing agencies, agency consultants, and the client will be performed as additional work on an hourly basis.
- b. We assume that a reasonable and customary number of contractor RFIs will be processed, and that submittals will be generally accurate and complete, with relatively minimal revisions required by the design engineer. Processing of excessive RFIs and repetitive markups of submittals will be billed on a time and materials basis as additional work.
- c. Inspection time is limited to 150 hours in aggregate between the field inspector and the design engineer. Additional time, if requested, will be billed on a time and materials basis.
- d. This proposal is limited strictly to those items quoted above.

We appreciate this opportunity to submit our proposal to the Authority. Should you have any questions or need additional information, please do not hesitate to call. Please sign and return one (1) copy of this proposal as our Notice to Proceed.

Sincerely,

PENNONI ASSOCIATES INC.



Daniel P. Barbato, P.E.
Authority Engineer

ACCEPTED BY: _____

(Print Name and Title)

DATE: _____



January 10, 2013

Rick Smith, Township Manager
East Goshen Township
1580 Paoli Pike
West Chester, PA 19380

RECOMMENDED FOR APPROVAL
RS 1-11-13

Re: Proposal for Professional Services
Hershey's Mill Pump Station Diversion Construction Phase Services

Dear Mr. Smith:

Pennoni Associates Inc. is pleased to submit the following proposal for the construction phase services associated with the Hershey's Mill Pump Station (HMPS) force main diversion.

BACKGROUND

The diversion project was initiated as a result of the *Township Wastewater Needs Evaluation*, dated April 16, 2007, which projected future flows through the Chester Creek Collection System (CCCS), a.k.a. West Goshen Service Area, will exceed the capacity limitation in the intermunicipal agreement between East Goshen and West Goshen. The intermunicipal agreement limits East Goshen's wastewater flow through the CCCS to a capacity of 1,000,000 gallons per day (gpd). The *Township Wastewater Needs Evaluation* determined that under potential future development, the flow through the CCCS may approach 1,300,000 gpd, which will exceed the current intermunicipal agreement and the available treatment capacity of the West Goshen Sewage Treatment Plant. By diverting the HMPS from the CCCS to the Ridley Creek Collection System (RCCS) and the recently expanded Ridley Creek Sewage Treatment Plant (RCSTP), approximately 64,275 gpd of capacity can be made available under the intermunicipal agreement. Additionally, the developments serviced by this pump station were proposed to have wastewater treated at the RCSTP in the Township's 1999 *Act 537 Plan Update*.

Following the *Township Wastewater Needs Evaluation*, Pennoni prepared the *Hershey Mill and Reserve Pump Station Special Study*, dated February 15, 2008. The study recommended diversion of both pump stations into the RCCS. Pennoni prepared the *Act 537 Plan Update Revision for the Hershey Mill and Reserve Pump Station Diversion*, last revised June 2010 with a partial supplemental submission to the PADEP on February 17, 2011, which was ultimately approved by the PADEP on June 6, 2011.

Pennoni then prepared the design documents, permit applications, and bid packages. The bid solicitation period began on January 9, 2013. Bids are due February 5, 2013, and a construction contract award is projected to occur on February 11, 2013.

The proposed HMPS force main diversion consists of approximately 990 feet of 6-inch force main through the property of 972 Cornwallis Drive and along the Cornwallis Drive right-of-way to an existing manhole in front of 968 Cornwallis Drive. The diversion is proposed to be constructed via horizontal directional drilling and will involve one creek crossing. Over 3,000

feet of existing 6-inch force main is also proposed to be abandoned-in-place, and two existing manholes will be cured-in-place lined.

SCOPE OF WORK

The scope of work for this phase of the project includes construction inspection and office support with specific details as follows.

Construction Inspection: Part-time construction inspection for critical construction activities including:

- Preconstruction meeting
- Tree removal and limited clearing
- Stakeout
- E&S controls installation
- Force main installation via directional drilling and open cut
- Connections to existing force main and manholes
- Cured-in-place manhole lining
- Bypass pumping
- Force main abandonment via flowable fill
- Force main and manhole testing
- Restoration
- Final inspection

We have included a total of 150 hours of inspection time over the four-month project duration.

Office Support: Pennoni's design engineer will provide support on the project with responses to contractor requests for information (RFIs), questions or requests for clarification from the Authority, support of the construction inspector, conducting the preconstruction meeting, review of contractor requests for payment and change order requests, and project closeout documentation. We will also prepare a "construction set" of plans and specifications to incorporate changes that occurred via addenda. Lastly, we will prepare survey control data, coordinates, and limited CAD files for contractor use in stakeout of key features.

FEE

Our estimated fee, to be billed on a time and material basis, is **Twenty Thousand Dollars** (\$20,000).

Work will be done on an hourly basis, billed at the Authority's approved rates for Pennoni for 2013.

Extraordinary expenses, authorized in advance and identifiable to the specific project will be billed in addition to the above stated fees. These expenses include, but are not limited to: permit application fees, Federal Express and delivery charges, and the reproduction of plans and

Rick Smith

HMPS Diversion Construction Phase Support

specifications by outside services. We do not bill for such items as relatively small amounts of in-house printing, mailing expenses, reasonable telephone calls, and travel expenses.

BILLING AND PAYMENT

Fees will be billed monthly based on actual services completed. Payment is due upon receipt of invoice. Billing and Payment shall be in accordance with Item three (3) of the attached General Terms and Conditions.

The client acknowledges that the method of Billing and Payment has been discussed in detail; that the terms agreed upon can only be changed by a written addendum agreed to by both parties; and work may be stopped until payment is made in accordance with the agreement.

TERMS AND CONDITIONS

General

Pennoni Associates Inc. General Terms and Conditions (Form No. LE01, Rev. 09/2002) as approved with our contract with the Authority are considered as part of this proposal.

Special

- a. Revisions to the plans or documents as a result of personal preferences of contractors, reviewing agencies, agency consultants, and the client will be performed as additional work on an hourly basis.
- b. We assume that a reasonable and customary number of contractor RFIs will be processed, and that submittals will be generally accurate and complete, with relatively minimal revisions required by the design engineer. Processing of excessive RFIs and repetitive markups of submittals will be billed on a time and materials basis as additional work.
- c. Inspection time is limited to 150 hours in aggregate between the field inspector and the design engineer. Additional time, if requested, will be billed on a time and materials basis.
- d. This proposal is limited strictly to those items quoted above.

We appreciate this opportunity to submit our proposal to the Authority. Should you have any questions or need additional information, please do not hesitate to call. Please sign and return one (1) copy of this proposal as our Notice to Proceed.

January 10, 2013


Page 4

Rick Smith

HMPS Diversion Construction Phase Support

Sincerely,

PENNONI ASSOCIATES INC.



Daniel P. Barbato, P.E.
Authority Engineer

ACCEPTED BY: _____

(Print Name and Title)

DATE: _____

EAST GOSHEN MUNICIPAL AUTHORITY
EAST GOSHEN TOWNSHIP
1580 PAOLI PIKE, WEST CHESTER, PA 19380-6199

January 7, 2013

To: Municipal Authority
From: Mark Miller
Re: December 2012 Monthly Report

Meters: The meters were calibrated on January 3, no adjustments were needed.

C.C. Collection: All pump stations were visited on a daily basis, bar screens were cleaned. We had some problems over the holiday with Ashbridge Pumping Station with the backup floats. We replaced the transducer and the station was put back in service. We had several alarms during the heavy rain event. The equipment has started to arrive for the Muffin Monster.

R.C. Collection: The pumping station was visited on a routine basis. We were notified of a sewer problem at 928 Monte Vista Drive. When we arrived we found the cleanout by the house overflowing, after making several attempts to clear the pipe we could not clear the blockage. An emergency PA One Call was made and once the utilities were cleared we began digging between the main and clean-out we found the tee was all but gone. The stack pipe had a huge hole in it (see pictures). We replaced the tee and about 20' of pipe.

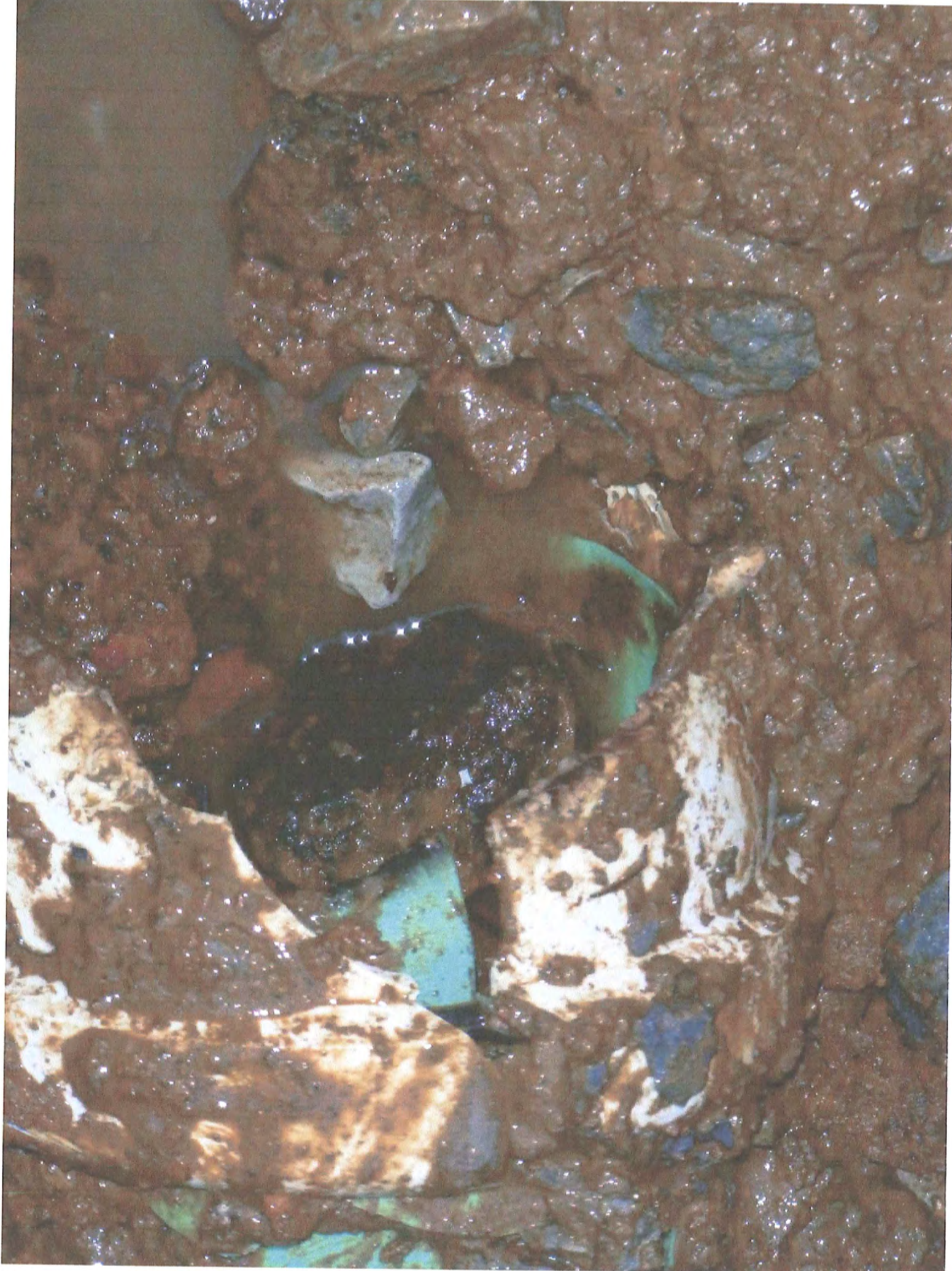
R.C. Plant: We had to make repairs to the utility water system. We also found the meter pit full of water which we pumped out. I'm working with Lenni Electric to install an alarm in the put when the pump fails.

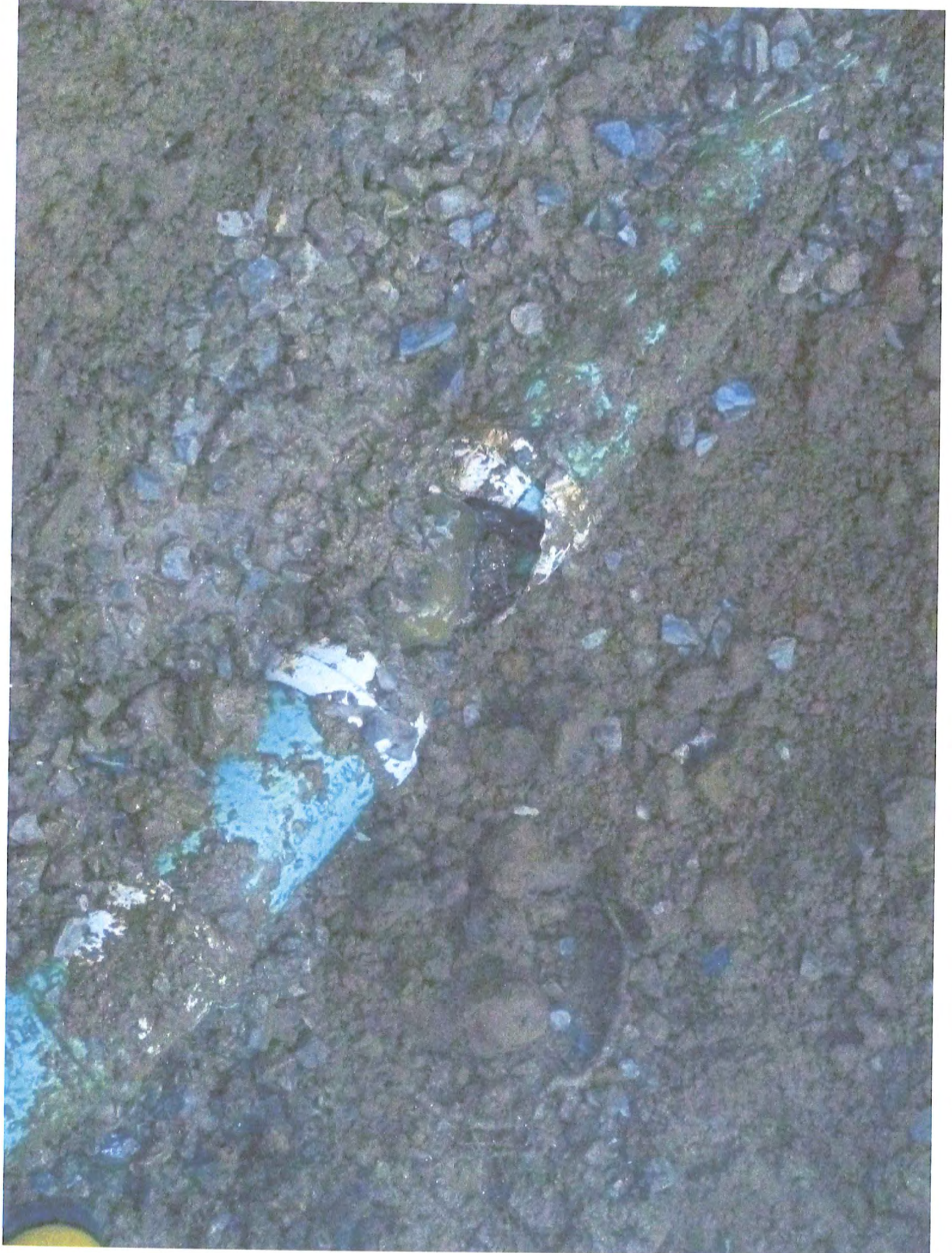
We are gathering data for the portable meters on a weekly basis.

PA One Calls: We received 68 PA One calls for the month of December.

I have asked Allied Control to get me a price to replace the Paoli Pike and Ellis Lane meter. These two meters are the original ones and getting parts for them is very difficult, the monies would come from the sinking fund. We are currently gathering GPS info. For the collection system.











MEMORANDUM

TO: East Goshen Municipal Authority Board
Rick Smith, Township Manager

FROM: Daniel Barbato, P.E.
Authority Engineer

DATE: January 10, 2013

SUBJECT: Engineer's Report

Invoices

- Invoices with summaries are provided under separate cover.

Ridley Creek Sewage Treatment Plant (RCSTP)

- Pennoni continues to coordinate with the Plant Operator and will provide operations assistance as needed. We provided specifications for a new Alum feed pump, and the pump was ordered.

Marydell PS Elimination

- We conducted a non-mandatory pre-bid meeting on December 19, 2012. Six (6) contractors attended.
- We prepared and issued Addenda #1, #2, and #3.
 - Addendum #1 provided prevailing wage rates and minor plan and specification revisions.
 - Addendum #2 extended the bid deadline to February 5, 2013 at 10:00 a.m. to provide time to respond to contractors' questions and requests for information.
 - Addendum #3 provided responses to contractors' questions from the pre-bid meeting, a re-design of the proposed sewer adjacent to the pump station, and a new Bid Form with revised quantities and bid items.
- Following the pre-bid meeting, we submitted a new PA One Call ticket and are coordinating with utility owners to verify any specific requirements they may have for the various proposed utility crossings.
- The intent is to award the project at the Authority meeting on February 11, 2013. Construction would likely begin in mid to late March, and the contract duration is 120 days.

Hershey's Mill PS Diversion

- We finalized the plans and specifications and solicited the project on PennBID on January 9, 2013. A non-mandatory pre-bid meeting is scheduled for January 23, 2013 at 10:00 a.m. at the Township building. Bids are due February 5, 2013 at 2:00 p.m. with the intent to award the project at the Authority meeting on February 11, 2013. Construction would likely begin in mid to late March, and the contract duration is 120 days.
- The Township has scheduled three (3) soil borings to be performed along the proposed sewer alignment on January 28, 2013. A Pennoni geotechnical engineer will observe the borings, categorize soils, and prepare boring logs. We intend to issue the boring logs as an addendum by January 31, 2013 for use by directional drillers in bidding.

Reserve PS Elimination

- We are coordinating with the Township to perform borings along the Reserve PS sewer alignment to identify any rock outcroppings. No boring logs or soil classifications are required for these borings. The bid documents will be finalized following the borings.
- The GP-5 "Utility Line Stream Crossing" permit does not allow any construction between March 1 and June 15 because the Ridley Creek tributary that will be crossed is a protected water use for trout stocking. We tentatively propose to put the project out to bid in March, with bids due in late April or early May, award on May 13, 2013, with construction to begin in early to mid June. The contract duration will be 120 days. This schedule would comply with the permit restrictions and avoid conflicts with the other two projects.

Hershey's Mill Muffin Monster

- We reviewed shop drawings from the Muffin Monster manufacturer, and we provided marked-up shop drawings and comments to the Township. The manufacturer has responded that they will comply with all comments. The supplier has projected 90 days to manufacture and deliver the equipment to the Township.



Monthly Operations Report: December 2012

Treatment Process Operation

During November, there were no exceedances of the final effluent discharge limitations for outfall 001. There was no discharge from outfall 002. The monthly average total phosphorus concentration was reported as 0.42 mg/L as compared to the discharge limitation of 0.5 mg/L. During the month, the final effluent total phosphorus concentration discharged ranged from 0.16 mg/L to 0.93 mg/L.

During December, the anticipated monthly average total phosphorus concentration is 0.20 mg/L. The total phosphorus concentration discharged ranged from <0.10 mg/L to 0.38 mg/L.

Table 1 illustrates the downward trend of the final effluent total phosphorus concentrations prior to and after the valve operation issue was resolved.

Table 1	
Final Effluent: Outfall 001	
Sample Date	Total Phosphorus, mg/L
Nov. 1, 2012	0.54 mg/L
Nov. 13, 2012	0.93 mg/L
Nov. 20, 2012	0.70 mg/L
Nov. 24, 2012	0.18 mg/L
Nov. 25, 2012	0.16 mg/L
Nov. 27, 2012	0.35 mg/L
Nov. 29, 2012	0.21 mg/L
Nov. 30, 2012	0.28 mg/L
November Average	0.42 mg/L
Dec. 4, 2012	0.38 mg/L
Dec. 5, 2012	0.27 mg/L
Dec. 9, 2012	0.27 mg/L
Dec. 10, 2012	0.15 mg/L
Dec. 13, 2012	0.10 mg/L
Dec. 18, 2012	<0.10 mg/L
Dec. 26, 2012	0.14 mg/L
December Average*	0.20 mg/L

**December average will be confirmed prior to finalizing the DMR.*



Sequencing batch reactors (SBRs) numbered 1, 3 and 4 were in service during the month of November. Process monitoring of each SBR included ammonia as N, nitrite as N, Nitrate as N, COD, SSV, MLSS and total phosphorus. Microscopic examinations and physical observation of the SBR MLSS and foam color is ongoing. Adjustments to increase the F:M ratio for each SBR was successful towards improving settleability, reduction in solids loss through the SBR effluent and reduction of foam.

Daily monitoring of the influent and final effluent 24-hour composites samples versus grab samples for total phosphorus is ongoing. Daily analysis of the sample for total phosphorus is continuing. Figure 1 illustrates the phosphorus concentrations observed during December 2012. The corresponding data is presented in Table 2.

Figure 1

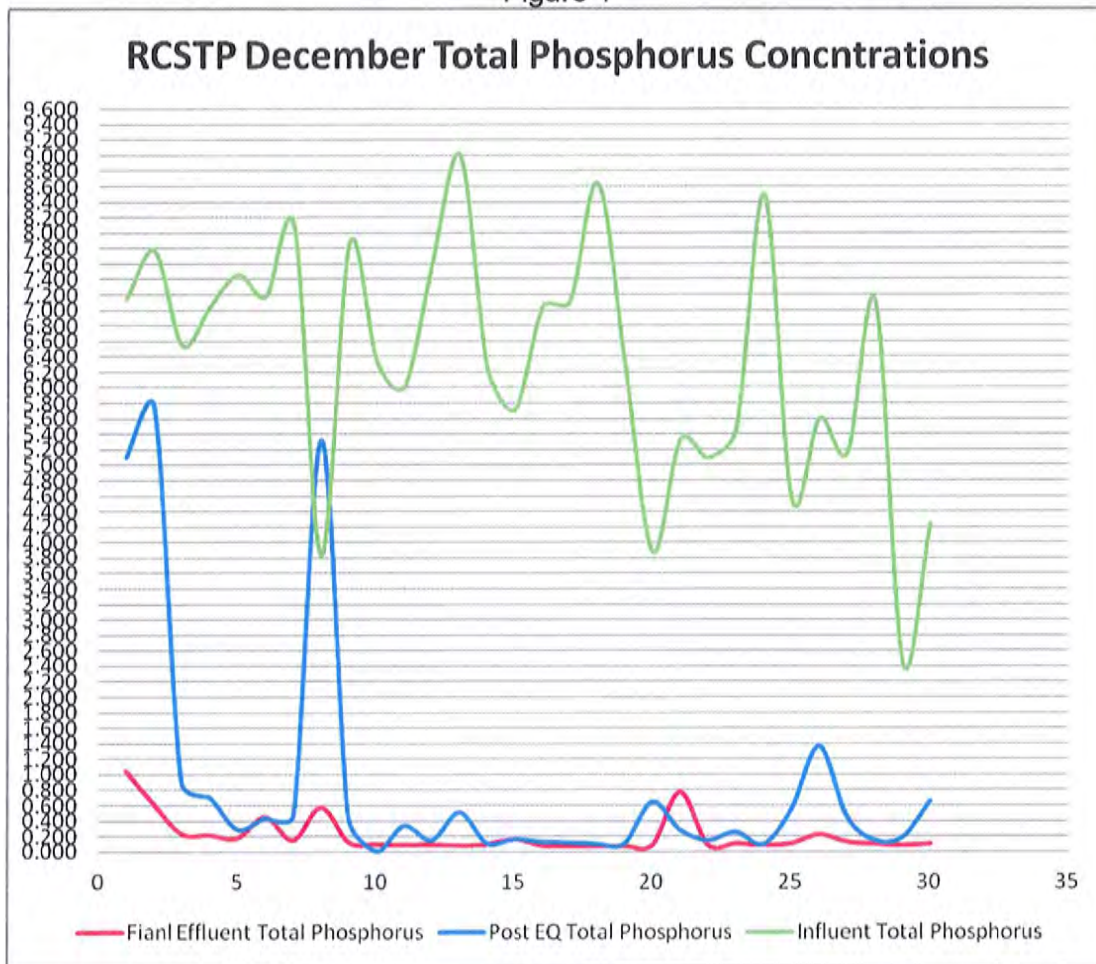
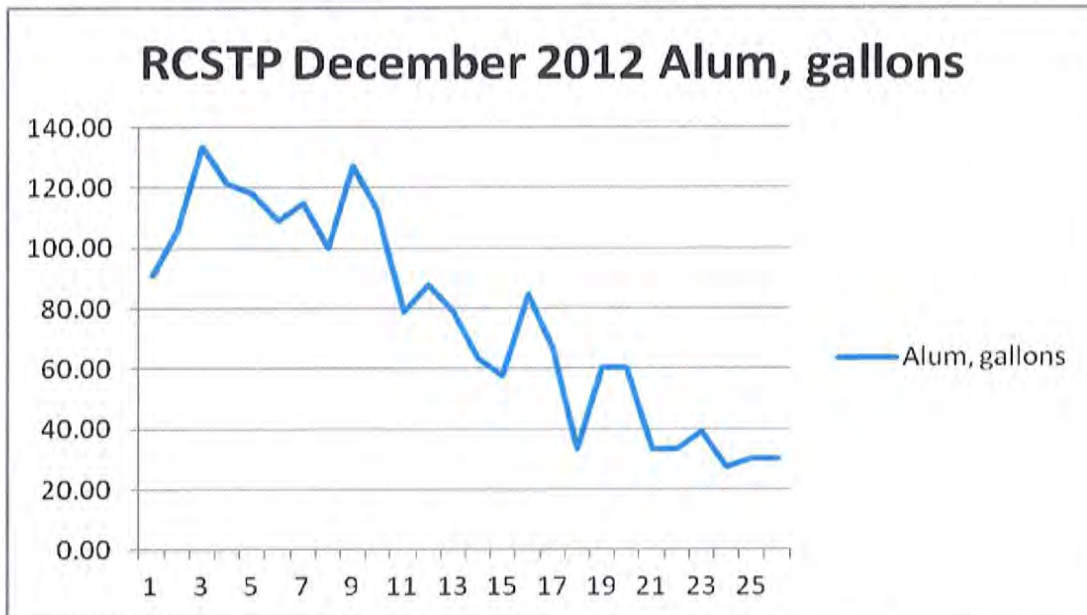




Table 2					
Total Phosphorus, mg/L					
Date	Influent	Post EQ	Final Effluent, 24-hr composite	ALS	% Difference
1-Dec-12	7.15	5.100	1.050		
2-Dec-12	7.77	5.750	0.622		
3-Dec-12	6.55	0.893	0.238		
4-Dec-12	7.1	0.701	0.221	0.38	53%
5-Dec-12	7.5	0.285	0.180	0.27	40%
6-Dec-12	7.2	0.434	0.454		
7-Dec-12	8.10	0.471	0.154		
8-Dec-12	3.8	5.320	0.578		
10-Dec-12	7.86	0.438	0.129	0.15	15%
11-Dec-12	6.34	.	0.099		
12-Dec-12	6.02	0.332	0.092		
13-Dec-12	7.62	0.146	0.096	0.1	4%
14-Dec-12	9.00	0.505	0.085		
15-Dec-12	6.3	0.103	0.099		
16-Dec-12	5.71	0.158	0.166		
17-Dec-12	7.04	0.122	0.084		
18-Dec-12	7.12	0.113	0.073	0.1	31%
19-Dec-12	8.64	0.095	0.074		
20-Dec-12	6.32	0.100	0.076		
21-Dec-12	3.88	0.641	0.093		
22-Dec-12	5.32	0.276	0.777		
23-Dec-12	5.09	0.140	0.090		
24-Dec-12	5.45	0.249	0.108		
25-Dec-12	8.50	0.091	0.088		
26-Dec-12	4.56	0.548	0.112	0.14	22%
27-Dec-12	5.60	1.36	0.226		
28-Dec-12	5.16	0.45	0.131		
29-Dec-12	7.11	0.14	0.105		
30-Dec-12	2.44	0.18	0.090		
31-Dec-12	4.24	0.65	0.108		
Average	6.35	0.889	0.217	0.190	0.276
Minimum	2.44	0.091	0.073	0.100	0.041
Maximum	9.0	5.75	1.05	0.38	0.53
Std Deviation	1.58	1.584	0.238	0.112	0.176



Addition of aluminum to the SBRs to assist with phosphorus removal continued. The volume of alum addition to the SBRs was gradually decreased during the month while maintaining compliance with the discharge limitation for total phosphorus.



SBR No. 2 remains out of service. Approximately 5 feet of clear water manually decanted from SBR No. 2. The contents are mixed and are aerated. Transfer of additional volume to the sludge holding tanks is planned for January and February.

Process Monitoring On-Line Instrumentation:

Kershner Technologies was contacted to arrange for a pilot study utilizing the ChemScan phosphate analyzer. An onsite meeting to review the installation of the demo unit has been scheduled for January 16th at 8:30 AM.

A LMI diaphragm pump was purchased for use to provide alum to the flocculation tank prior to filtration. Installation of the pump is scheduled for the week of January 1st.

Presented below is a summary of the flow data for December 2012:



Flow data:

December 2012		
Flow Meter Location	Total Volume for Month, MGD	Average Daily Flow, gpd
Influent Wastewater to Screening Building	10.030	323,535
Influent Wastewater to SBRs	11.437	368,929
Internal Recycle	1.518	49,965
Treated Effluent to Disc Filters	10.941	353,945
Final Effluent Discharge	8.357	269,581
Applebrook Golf Course	0	0

Chemical Usage:

December 2012		
Chemical	Daily Average	Total Monthly
Soda Ash	348 lbs./day	10,800 pounds
Magnesium Hydroxide	0 gpd	0 gallons
Polyaluminum chloride solution	0 gpd	0 gallons
Polymer (centrifuge)	4.5*	45 gallons

*Twelve (12) days of centrifuge operation

Solids Dewatering and Disposal: December 2012

During the month, the centrifuge dewatering system was placed in service. Presented below is a summary of the solids processing activity:

Sludge Dewatering Summary	
Gallons of sludge dewatered	214,638 gallons
Average Dewatered Total Solids, %	17.9%* (<i>estimated on-site data</i>)
Wet Tons	42.45
Dry Tons	7.60* (<i>estimated based on-site data</i>)
Number of dumpsters	4

During the month, sludge wasting to the sludge holding tanks and decanting of the sludge holding tanks was ongoing. Process monitoring included pH, total alkalinity and total solids.

Sludge holding tank No. 1 was in service. The level at the beginning of the month was recorded as 13.50 feet and the level at the end of the month was 10.81 feet. The initial total solids concentration was 0.73% and ended the month as 1.18%



total solids. A total of 118,125 gallons of supernatant was decanted during the month.

Sludge holding tank No. 2 was in service. The level at the beginning of the month was recorded as 7.87 feet and the level at the end of the month was 8.09 feet. The initial total solids concentration was 0.81% and ended the month as 0.69% total solids. No supernatant was decanted. Sludge was removed for dewatering through the centrifuge.

Significant Storm Events

During December there were two (2) significant rainfall events contributing to excessive influent wastewater flows to the treatment facility. The events occurred on December 21st and 26th. On December 21st, the influent flow to the SBRs is estimated as greater than 100% of the daily average hydraulic design capacity from 4:03 AM through 11:20 AM. On December 26th, the influent flow to the SBRs is estimated as greater than 100% of the daily average hydraulic design capacity from 15:46 PM through 11:50 PM. The treatment process experience filled settle and filled decants, however, the final effluent composite sample was satisfactory.

Minor Repairs and Preventative Maintenance

- The utility water 1-inch PVC valve to the fine screen failed and requires replacement. Parts are on order and scheduled replacement is during the week of January 1st.
- The influent composite sampler controller was returned to Hach Company for repair. The price for the sample controller was received and a purchase order issued on January 2, 2013.
- The analog hour meter on the Siemens panel for SBR 1 motive pump failed.
- SBR 1 and 2 1-inch PVC Hayward PVC ball valves are leaking alum. Tightening the valves has not solved the problem. It is recommended to replace the ball valves with an o-ring material compatible with the low pH/corrosive nature of alum...
- Replacements of exterior wall mounted light ballast are planned.
- ACS was contacted to schedule repair of the influent flow chart recorder.



- ACS was contacted to provide a flow meter signal cable to connect the new influent "field" flow meter to the influent sampler located at the doghouse manhole to provide for flow proportioned sample collection of the influent wastewater.

DRAFT REPORT

Ridley Creek Sewage Treatment Plant Monthly Operations Report

Influent Wastewater											
Design Basis	Flow MGD Average	BOD ₅		TSS		NH ₄ -N		TKN, mg/L		Phosphorus, Total, mg/L	
		mg/L	lbs/day	mg/L	lbs/day	mg/L	lbs/day	mg/L	lbs/day	mg/L	lbs/day
Sample Date		335	2,098	320	2,001	32	200	48	301	9.1	57
December 4, 2012	0.2421	183	369	210	424	21.4	43	42.7	86	7	14
December 10, 2012	0.2688	233	522	130	291	42.1	94	44.7	100	5.5	12
December 18, 2012	0.2808	310	726	430	1,007		0		0	8.8	21
December 26, 2012	0.5438	200	907	156	708		0		0		0
Average	0.3339	232	631	232	607	32	34	44	47	7	12
Minimum	0.2421	183	369	130	291	21	0	43	0	6	0
Maximum	0.5438	310	907	430	1007	42	94	45	100	9	21

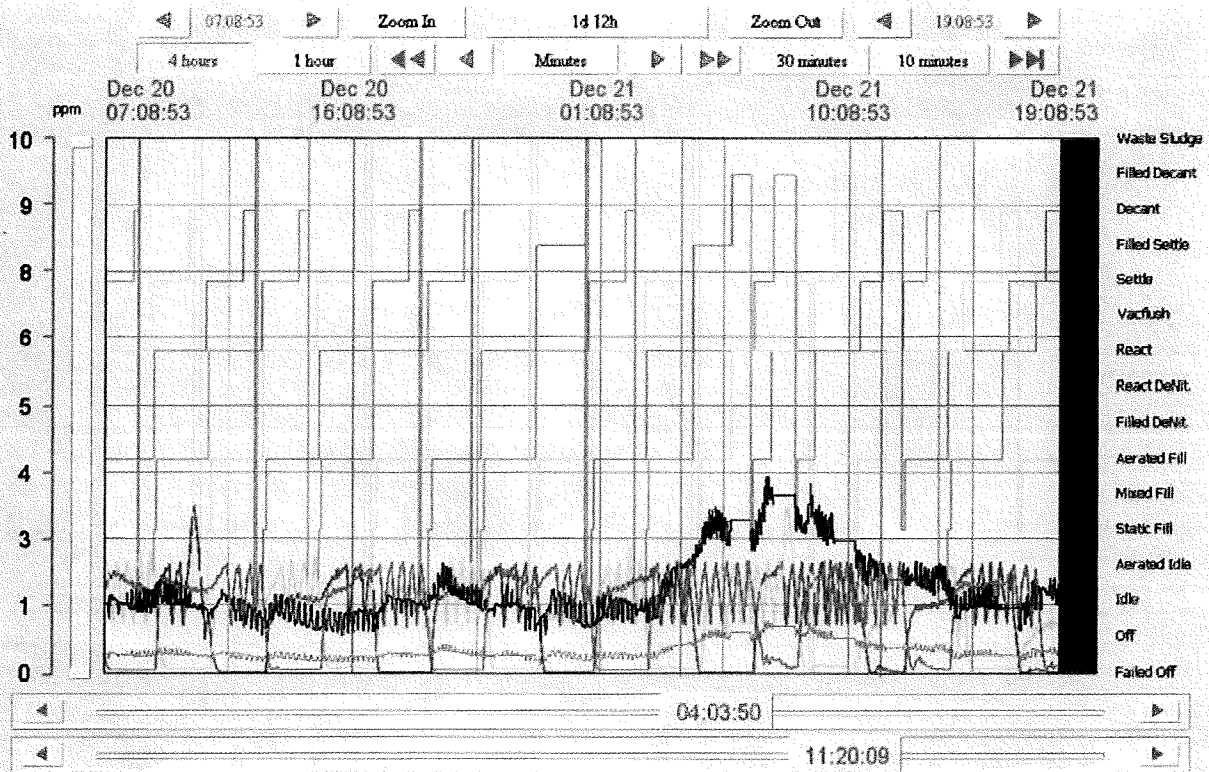
Final Effluent - Out Fall 001											
NPDES Permit Discharge Limitations	Flow MGD Average Instantaneous Maximum	CBOD ₅		TSS		NH ₄ -N		Phosphorus, Total, mg/L		Fecal Coliform	
		mg/L	lbs/month	mg/L	lbs/month	mg/L	lbs/month	mg/L	lbs/month	Geo Mean	Geo Mean
Sample Date		20	125	21	131	7	44	0.5	3	200	1,000
December 4, 2012	0.210	2.0	3.5	11	19	0.10	0.18	0.38	0.67	1	0.0000
December 5, 2012	0.230							0.27	0.52		
December 9, 2012	0.211					0.10	0.18	0.27	0.48		
December 10, 2012	0.213	2.0	3.6	5	9			0.15	0.27	1	0.0000
December 13, 2012	0.239							0.10	0.20		
December 18, 2012	0.250	2.0	4.2	5	10		0.00	0.10	0.21	1	0.0000
December 26, 2012	0.370	2.0	6.2	5	15		0.00	0.14	0.43	1	0.0000
Average	0.2461	2.0	4	7	14	0.100	0.09	0.20	0.39	1	0.0000
Minimum	0.2100	2.0	4	5	9	0.100	0.00	0.10	0.20	1	0.0000
Maximum	0.3700	2.0	6	11	19	0.100	0.18	0.38	0.67	1	0.0000

FINAL REPORT

Ridley Creek Sewage Treatment Plant Monthly Operations Report

Influent Wastewater											
Design Basis	Flow	BOD ₅		TSS		NH ₄ -N		TKN, mg/L		Phosphorus, Total, mg/L	
		mg/L	lbs/day	mg/L	lbs/day	mg/L	lbs/day	mg/L	lbs/day	mg/L	lbs/day
Sample Date	MGD Average	335	2,098	320	2,001	32	200	48	301	9.1	57
November 1, 2012	0.2180	483	878	58	105	30.5	55	43.9	80	13.7	25
November 13, 2012	0.2260	385	726	324	611	37.7	71	27.3	51	6.4	12
November 20, 2012	0.2480	303	627	140	290	32.6	67	125	259	4.5	9
November 27, 2012	0.2920	170	414	128	312	37.9	92	48.1	117	5.8	14
Average	0.2460	335	661	163	329	35	72	61	127	8	15
Minimum	0.2180	170	414	58	105	31	55	27	51	5	9
Maximum	0.2920	483	878	324	611	38	92	125	259	14	25

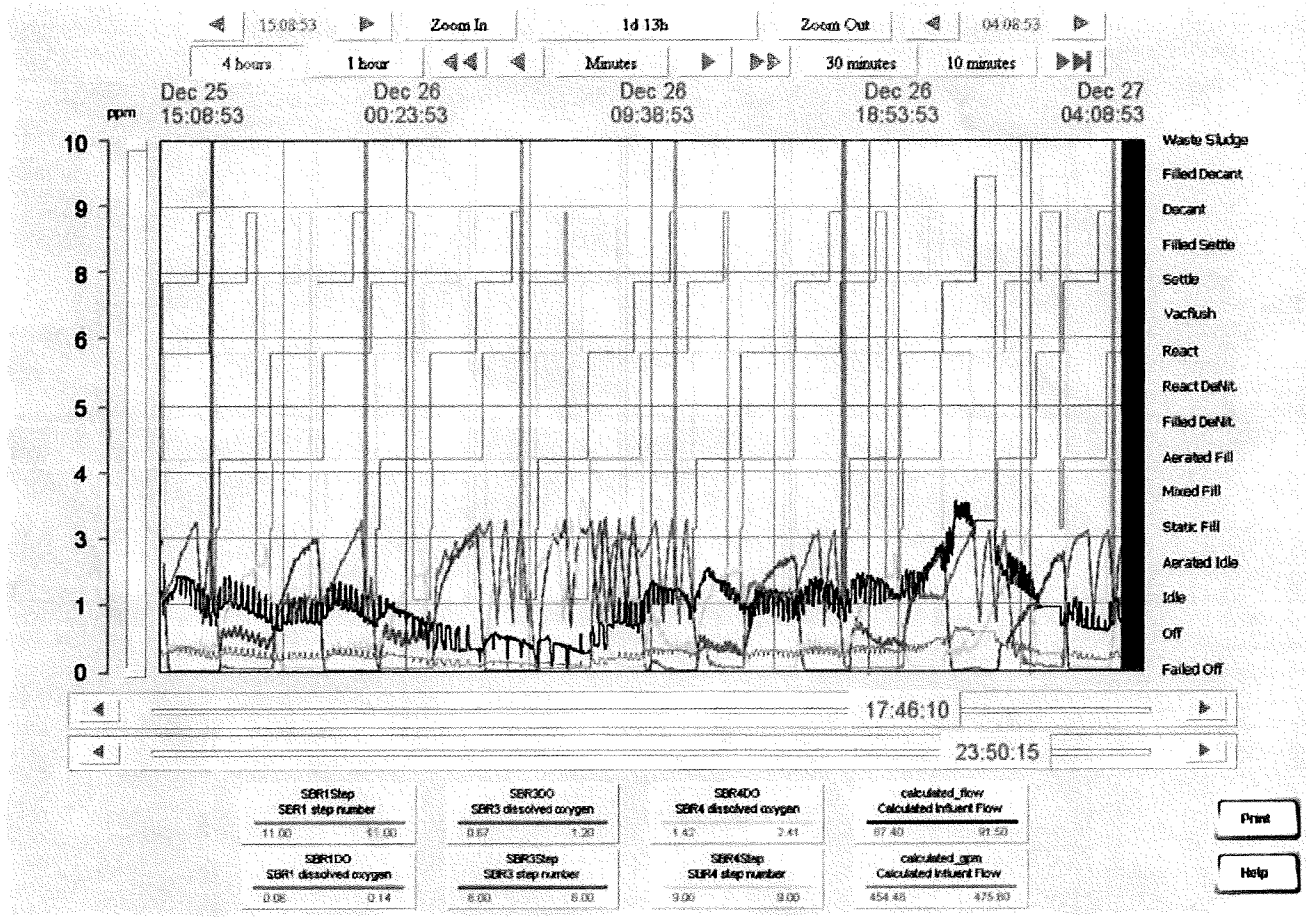
Final Effluent - Out Fall 001											
NPDES Permit Discharge Limitations	Flow	CBOD ₅		TSS		NH ₄ -N		Phosphorus, Total, mg/L		Fecal Coliform	
		mg/L	lbs/month	mg/L	lbs/month	mg/L	lbs/month	mg/L	lbs/month	Geo Mean	Geo Mean
Sample Date	MGD Average	20	125	21	131	7	44	0.5	3	200	1,000
November 1, 2012	0.258	3.4	7.3	20	43	3.22	6.93	0.54	1.16	3	0.4771
November 13, 2012	0.241	2.0	4.0	6	12	0.20	0.40	0.93	1.87	1	0.0000
November 20, 2012	0.254	3.4	7.2	5	11	0.10	0.21	0.70	1.48	1	0.0000
November 24, 2012	0.262							0.18	0.39		
November 25, 2012	0.277							0.16	0.37		
November 27, 2012	0.260	2.0	4.3	6	13	0.17	0.37	0.35	0.76	1	0.0000
November 29, 2012	0.219							0.21	0.38		
November 30, 2012	0.2350							0.28	0.55		
Average	0.2508	2.7	6	9	20	0.923	1.98	0.42	0.87	2	0.1193
Minimum	0.2190	2.0	4	5	11	0.100	0.21	0.16	0.37	1	0.0000
Maximum	0.2770	3.4	7	20	43	3.220	6.93	0.93	1.87	3	0.4771



SBR1Step SBR1 step number 6:00 9:00		SBR3DO SBR3 dissolved oxygen 1.44 0.08		SBR4DO SBR4 dissolved oxygen 0.08 0.87		calculated_flow Calculated Influent Flow 101.40 101.40	
SBR1DO SBR1 dissolved oxygen 2.05 1.89		SBR3Step SBR3 step number 9:00 11:00		SBR4Step SBR4 step number 11:00 6:00		calculated_gpm Calculated Influent Flow 527.28 527.28	

Print

Help



SBR 4 20:24 Filled decant 2.00 min.

SBR 3 21:33 Filled Settle 72.33 min.

 21:42 Filled decant 45.02 min.

 22:27 Idle - Filter T.O.

Rick Smith

From: scott_towler@comcast.net
Sent: Wednesday, January 02, 2013 8:48 PM
To: Rick Smith; Mark Miller
Cc: Daniel Barbato
Subject: RCSTP December O&M report
Attachments: December 2012 RCSTP O&M Report.pdf; RCSTP_DECEMBER 2012 _DRAFT_BOD_Summary.pdf; RCSTP_November 2012_Final_BOD_Summary.pdf; SBR Influent Flow 12_21_2012.pdf; SBR Influent Flow 12_26_2012.pdf

Rick / Mark:

Attached is the December O&M report for RCSTP. All of the final effluent phosphorous data has been received and the plant is in compliance for December. The monthly average was 0.20 mg/L with a range of <0.10 mg/L to 0.38 mg/L. The range is tighter than November and the TSS has been 5 mg/L or less for the past three weeks. Also attached are the flow graphs from the storm events on December 21st and 26th.

Dave Wolfinger confirmed visiting the facility on this Friday, January 4th in the morning. I'll call mark when Dave arrives.

Dave Kershner and Charlie Singer will be on site January 16th for the ChemScan demo install.

I'll be at RCSTP tomorrow morning. I'll call Mark for his availability to meet (I was delayed with a few issues at Balmoral this afternoon).

Sincerely,
Scott A. Towler

2012 SUMMARY OF METER READINGS

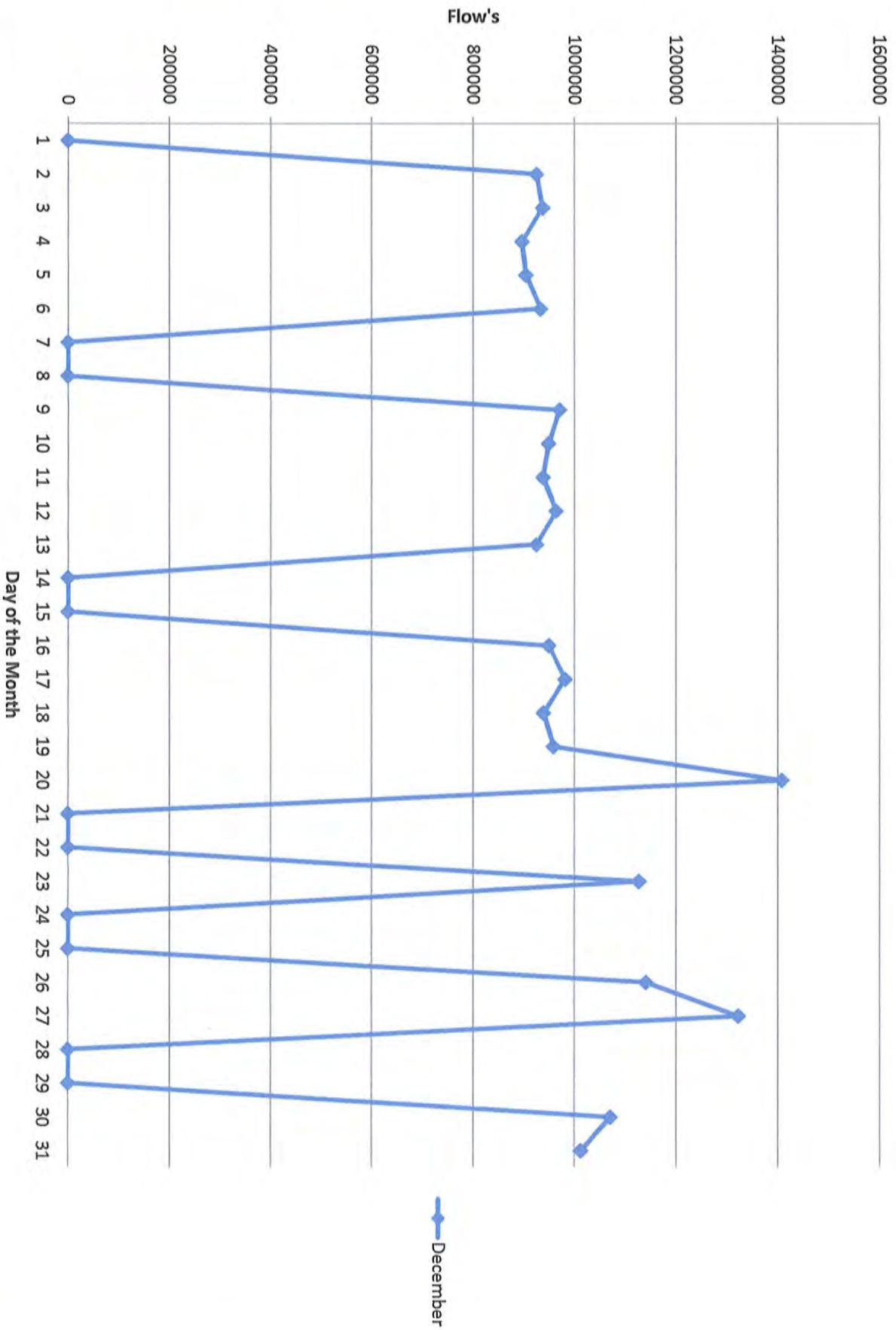
	WESTTOWN WAY	ELLS LANE	PAOLI PIKE	WILSON DRIVE	SUMMIT	HERSHEY MILL	ASHBRIDGE	HICKS	RESERVOIR	SHERMAN	BARKWAY
JANUARY	1,296,433	152,585	69,729	69,440	20,400	73,086	90,225	67,846	909,322	6,922	12,327
FEBRUARY	1,172,663	140,579	61,074	65,911	20,400	63,565	73,939	295,466	1,019,637	6,561	11,350
MARCH	1,157,405	222,657	61,103	71,039	20,400	60,276	70,943	300,484	0	6,707	8,575
APRIL	1,059,167	186,208	53,353	57,578	20,400	58,987	63,358	285,508	285,613	6,407	10,305
MAY	1,144,546	167,830	63,648	81,622	20,400	55,378	60,690	304,075	652,083	6,354	10,862
JUNE	1,125,246	105,303	62,210	90,570	20,400	70,259	61,597	0	0	6,517	10,177
JULY	994,447	122,359	59,212	81,067	20,400	63,421	58,789	0	909,131	5,317	9,892
AUGUST	835,178	91,496	51,644	79,506	20,400	60,575	58,577	0	760,473	6,450	9,654
SEPTEMBER	0	117,229	51,630	78,510	20,400	66,058	60,098	0	806,598	6,647	9,596
OCTOBER	1,858,361	113,019	55,175	67,714	20,400	85,831	104,029	0	806,598	9,236	13,977
NOVEMBER	1,100,644	94,084	44,672	60,590	20,400	46,730	34,560	0	791,952	3,939	5,916
DECEMBER	1,229,000	106,745	52,947	64,185	20,400	82,971	70,977	0	869,306	7,459	11,923
Total Flows											
Monthly Ave	1,081,091	135,008	57,200	72,311	20,400	65,594	67,315	250,676	778,235	6,543	10,380

To
West Goshen 816,572

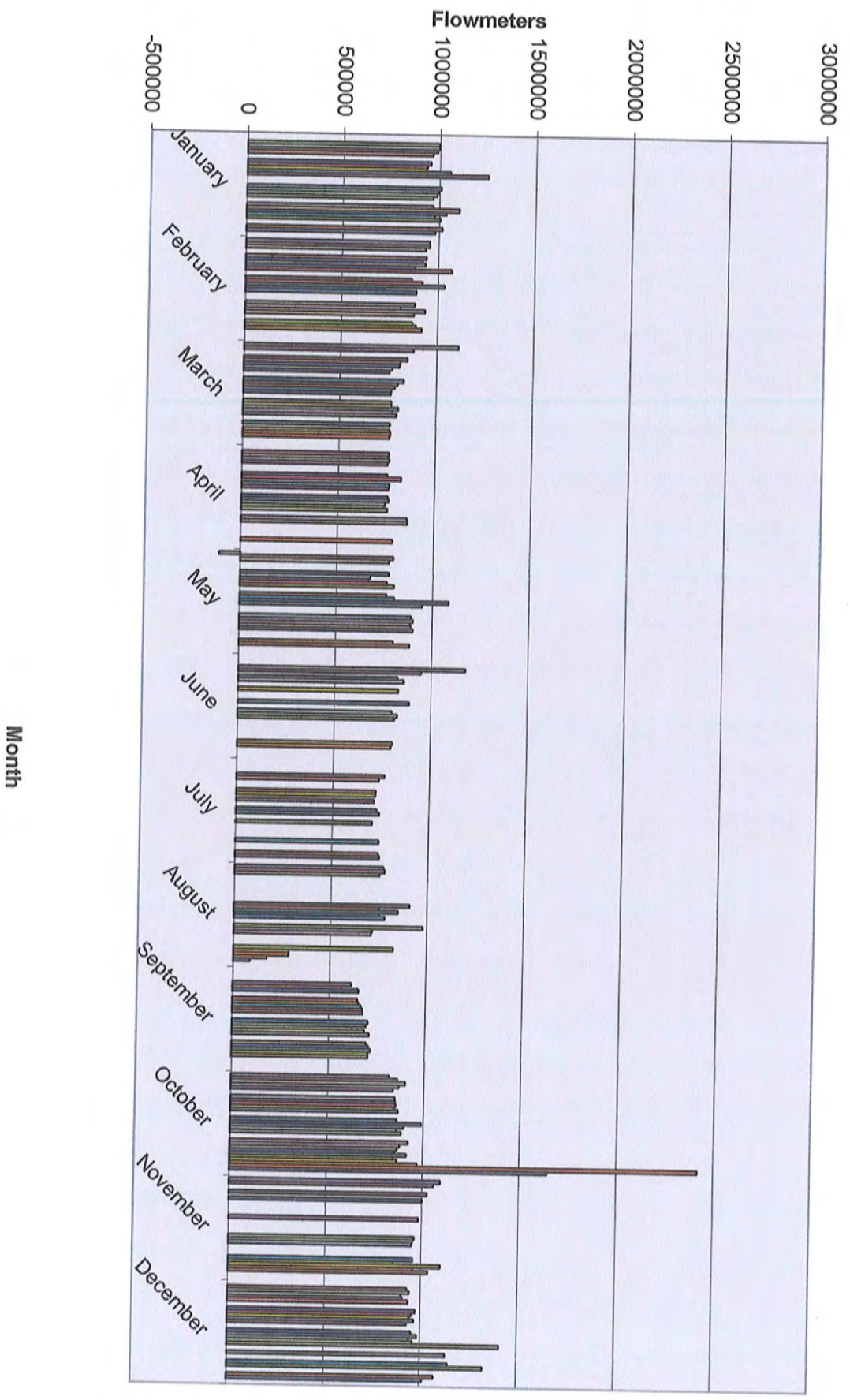
2012 SUMMARY OF METER READINGS

	WESTTOWN WAY	ELLIS LANE	PAOLI PIKE	WILSON DRIVE	SUMMIT
JANUARY	1,296,433	152,585	69,729	69,440	20,400
FEBRUARY	1,172,663	140,579	61,074	65,911	20,400
MARCH	1,157,405	222,657	61,103	71,039	20,400
APRIL	1,069,776	186,208	53,353	57,578	20,400
MAY	1,144,546	167,830	63,648	81,622	20,400
JUNE	1,125,246	105,303	62,210	90,570	20,400
JULY	994,447	122,359	59,212	81,067	20,400
AUGUST	835,178	91,496	51,644	79,506	20,400
SEPTEMBER	0	117,229	51,630	78,510	20,400
OCTOBER	1,858,361	113,019	55,175	67,714	20,400
NOVEMBER	1,100,644	94,084	44,672	60,590	20,400
DECEMBER	1,229,000	106,745	52,947	64,185	20,400
Total Flows					
Monthly Ave	1,081,975	135,008	57,200	72,311	20,400

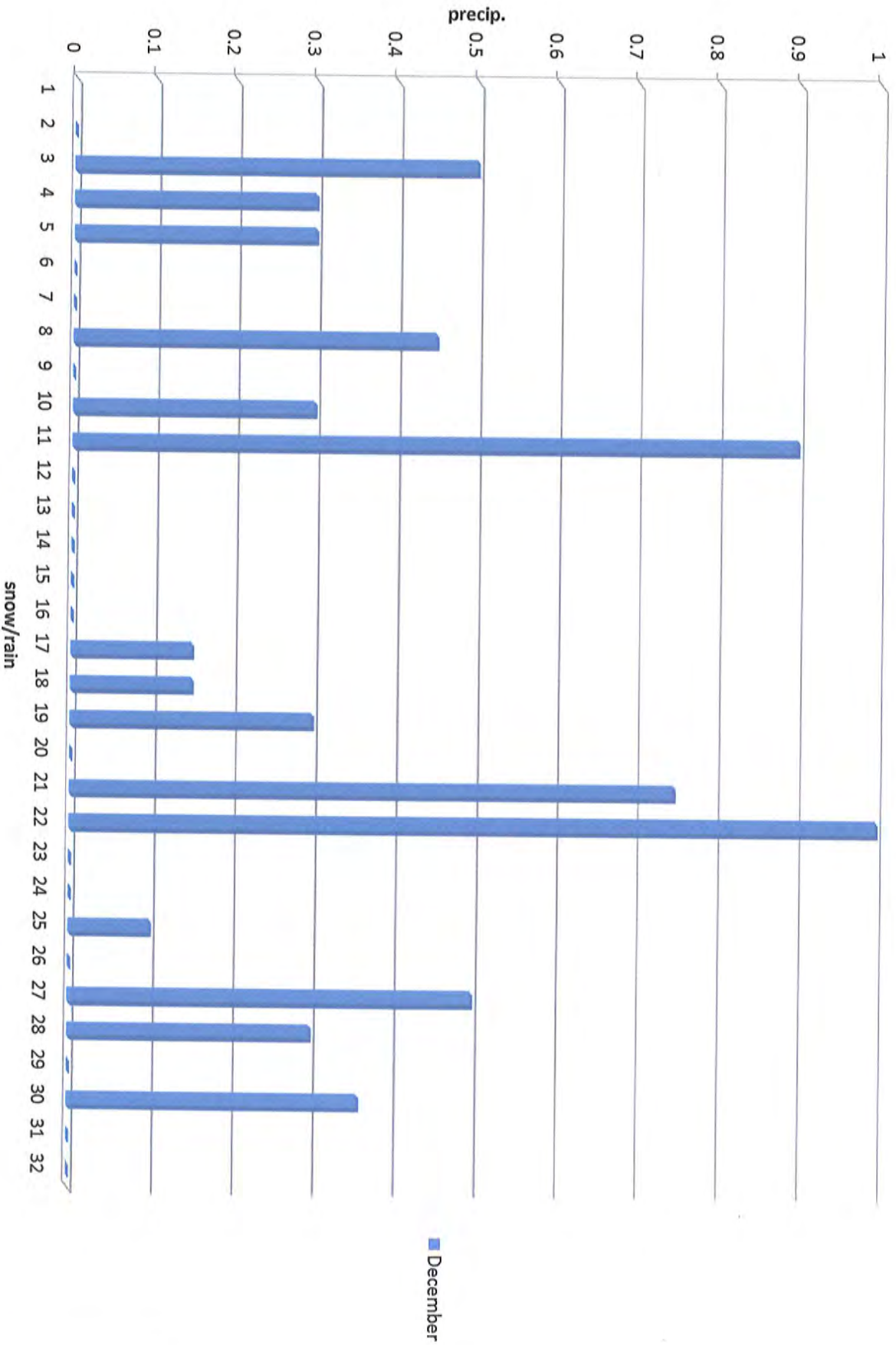
Flowmeters December 2012



Monthly Totals 2012 Jan-Dec



December Precip. 5.91 - 2012



2012 Monthly Precipitation

