

EAST GOSHEN MUNICIPAL AUTHORITY

April 8, 2013

Monday 7:00 PM

1. CALL TO ORDER/PLEDGE OF ALLEGIANCE/MOMENT OF SILENCE
 - a. Ask if anyone will be taping the meeting?

2. CHAIRMAN'S REPORT/OTHER MEMBERS REPORTS

3. APPROVAL OF MINUTES
 - a. March 11, 2013

4. APPROVAL OF INVOICES

a. Pennoni #540995	\$	2,026.50
b. Pennoni #540996	\$	535.25
c. Pennoni #540997	\$	497.50
d. Pennoni #540998	\$	752.00
e. Pennoni #540999	\$	4,995.75
f. Pennoni #541000	\$	2,580.50
g. Pennoni #541001	\$	6,327.75
h. Gawthrop, Greenwood #107114	\$	1,661.12
i. Big Fish Environmental Ser. #13-040130-2	\$	11,825.00
j. Lochwood Plant labor Costs	\$	913.20
k. Plymar Invoice – MaryDell Deversion	\$	23,000.00

5. LIAISON REPORTS
6. FINANCIAL REPORTS
 - a. March 2013 Report

7. OLD BUSINESS
 - a. Amend the 2013 Budget
 - b. Comp. Plan Goals Status Report

8. GOALS
 - a. March Goals

9. NEW BUSINESS
 - a. Acceptance of Pulte Development Sewer Lines

10. CAPACITY REQUESTS
 - a.

11. SEWER REPORTS
 - a. Director of Public Works Report
 - b. Pennoni Engineer's Report
 - c. Big Fish Environmental Inc Report with DMR's
 - d. East Goshen Township Flows for March 2013
12. ANY OTHER MATTER
13. CORRESPONDENCE AND REPORTS OF INTEREST
14. PUBLIC COMMENT
15. ADJOURNMENT

Reminder – NEWSLETTER ARTICLE SUBMISSION DUE DATES:

Article Due Date

Website Posting Date

1
2
3
4
5
6
7
8
9
10
11
12

draft
EAST GOSHEN TOWNSHIP MUNICIPAL AUTHORITY
MEETING MINUTES
March 11, 2013

13
14
15
16
17
18
19
20
21
22

The East Goshen Township Municipal Authority held their regularly scheduled meeting on Monday, March 11, 2013 at 7:00 pm at the East Goshen Township building. Members in attendance were: Chairman Fran Beck, Jack Yahraes, Dana Pizarro and Ed McAssey. Also in attendance were: Rick Smith (Township Manager), Carmen Battavio, (Township Supervisor), Mark Miller (Director of Public Works), Bob Adams, (Solicitor), Dan Barbato (Pennoni), Scott Towler (BFES), and Walter Wujcik (Conservancy Board).

23

COMMON ACRONYMS:

24
25
26
27

<i>BFES – Big Fish Environmental Services</i>	<i>MA- Municipal Authority</i>
<i>BOS – Board of Supervisors</i>	<i>NPDES – National Pollutant Discharge Elimination System</i>
<i>CB – Conservancy Board</i>	<i>PC – Planning Commission</i>
<i>DEP – Department of Environmental Protection</i>	<i>PR – Park & Recreation Board</i>
<i>EPA – Environmental protection Agency</i>	<i>RCSTP – Ridley Creek Sewer Treatment Plant</i>
<i>HC – Historical Commission</i>	<i>SBR – Sequencing Batch Reactor</i>
<i>I&I – Inflow & Infiltration</i>	<i>SSO – Sanitary System Overflow</i>
<i>LCSTP – Lochwood Chase Sewer Treatment Plant</i>	<i>WAS – Waste Activated Sludge</i>

28

Call to Order & Pledge of Allegiance

29
30
31
32

Fran called the meeting to order at 7:00 pm and led those present in the Pledge of Allegiance. There was a moment of silence to remember the troops. Fran asked if anyone would be recording the meeting and there was no response.

33

Chairman’s Report

34
35
36

Ed McAssey reported that he attended the West Goshen meeting on March 6, 2013. Most of the meeting was devoted to Goose Creek. They feel that by mid-May they will know if it will go to trial or not. They are going to send a notice to their customers.

37

Approval of Minutes

38
39

The Chairman noted that the minutes of the February 11, 2013 meeting were approved as corrected.

40

Approval of Invoices

41
42
43

1. Jack moved to approve payment of 5 Pennoni invoices:

#537504	\$5,033.00
#537505	\$2,167.75
#537506	\$ 570.00
#537507	\$2,494.00
#537508	\$2,496.75

44
45

Dana seconded the motion. The motion passed unanimously.

46

Liaison Reports

47
48

1. Conservancy Board – Walter reported that they staked the locations for the dogwood trees to be planted along E Boot Rd. Woodlawn is the contractor and will start in April. They will

1 fertilize the area based on the soil report. They will review their goals in the Comprehensive
2 Plan.

3 2. Board of Supervisors – Carmen reported that the Township’s finances are in good shape and
4 the Comprehensive Plan Task Force had its first meeting.
5

6 **Financial Reports**

7 1. Jon Altshul, CFO, provided reports with the following comment: The Municipal
8 Authority recorded \$19,794.15 in expenses and \$32,118.39 in revenues (mostly from a \$30,000
9 transfer from the sewer capital reserve fund, but also from the Pine Rock repayment) in the
10 month of February, a difference of \$12,324.24. The Fund balance is now \$55,234.11. He also
11 attached a worksheet for the 2013 quarterly administrative charge back of \$7,980.36.
12 Dana noted that the 2 pump stations are over budget. Rick will mention it to Jon but the Capital
13 Reserve should cover that. Fran spoke to Brian McCool about the options that are available to
14 residents for paying their sewer bill. Rick verified that they can use a check, automatic payment
15 from their checking account or a credit card which has a processing fee. Fran and Dana feel that
16 these haven’t been explained and are confusing. Rick will put something in the next newsletter.
17 Dana requested a detailed account breakdown with the financial reports.
18

19 **Old Business**

20 None
21

22 **Goals**

23 1. All of the Authority members think that the use of “Goals” by the Supervisors and
24 “Action Items” in the Comprehensive Plan are confusing. One or the other should be used, not
25 two different terms. Rick explained that the BOS wants the Authority to review the Action
26 Items. Rick will prepare a list for the next meeting. Jack commented that the first 2 items on the
27 Goals list should be in BOLD type since they are completed.
28

29 **New Business**

- 30 1. Rick reported that the Township received a letter from the EPA. He noted that East
31 Goshen does not accept anything from shale gas and only accepts domestic sewage.
32 2. The new NPDES inspector, Michael Brenner, met with Scott Fowler and went through
33 the Ridley Creek plant. The Authority reviewed his report and was very pleased.
34 3. The agreement with Willow Pond was previously signed, but due to an error, it has to
35 be re-signed. Rick gave the copies to Fran and Ed to sign.
36

37 **Capacity Requests**

38 None
39

40 **Sewer Reports**

- 41 1. **Mark Miller, Director of Public Works**, provided the following report for February:
42 **Meters** – The meters have been installed and are working well. We had a problem with
43 the portable meter at Reservoir and Strasburg Road. Allied Control found the main board
44 had failed. The meter was pulled and sent out for repair.
45 **Pump Stations** – Were visited on a daily basis. Bar screens were cleaned and the walls
46 were cleaned. The Mary Dell pump station called in several alarms last Sunday. We

1 found a bad float which was replaced. We contacted Aqua Wastewater to vac the wet
2 well due to heavy grease build up.

3 CC Collection: We were notified of a lateral backup at 1448 Linden Lane. We made
4 several attempts to clear the clog; unfortunately the cog was in the trap. We utilized the
5 jetter to clean the main. Once that was done, we dropped the camera in the main and
6 televised the 8" line which was clear. However, when we looked at the lateral
7 connection, we could see heavy root buildup. We made several more attempts to clear
8 the roots to no avail. We excavated the lateral and found the trap completely blocked.
9 We installed a new trap and clean out. We televised the lateral prior to backfilling and
10 everything is ok.

11 We were notified of a manhole over flowing on Paoli Pike. It turned out to be a Verizon
12 manhole.

13 R.C. Collection: We did televising of some lines at Pulte homes to investigate for sump
14 pump tie-ins. We found no evidence of sump pumps.

15 R.C. Plant: The plant operator notified us of heavy grit build up in front of the muffin
16 monster. I contacted Aqua Wastewater for a vac truck. The line was completely cleaned.
17 Lenni Electric was utilized to install four – 220 outlets for the pressure washer at various
18 locations at the plant. We are in the process of fabricating three pipe stands for the
19 filtration pumps. This will allow us to remove pumps for servicing.

20 Pipe Data View cleaned and televised 20,000 feet of pipe between both systems during
21 the month. No pipe problems to report; however, we needed to replace several manhole
22 castings.

23 Alarms: We received a total of 26 alarms

24 PA One Calls: We received 58 PA One calls for the month of February.

25 Mark commented that with the abandonment of the Reserve pump station, he wants to
26 pull the equipment and put it in Hunt Country. Some items are no longer available. The
27 building will have to be modified to fit the equipment but that can be done "in house".
28

29 2. Pennonni: Dan Barbato provided the following engineer's report:

30 Invoices: Invoices with summaries are provided under separate cover.

31 Ridley Creek Sewage Treatment Plant (RCSTP) – Pennoni continues to coordinate with
32 the Plant Operator and will provide operations assistance as needed. No issues were
33 brought to our attention in February. Our review of the monthly operations report does
34 not indicate any concerns.

35 Marydell PS Elimination – We attended a pre-construction meeting with the Township
36 and Ply-Mar Construction (Contractor) and a follow-up pre-construction meeting with the
37 Township, Ply-Mar, PennDOT and PECO.

38 We issued a contract award letter to Ply-Mar. We have also reviewed Ply-Mar's contract
39 documents and have coordinated with them to have their insurance coverage revised to
40 comply with contract requirements. They informed us they are in the process of having
41 their insurance revised, but they do not yet have a revised insurance certificate to submit
42 for review and approval.

43 Pending approval of the insurance, we intend to issue the Notice to Proceed with
44 Construction on March 18, 2013. Ply-Mar intends to mobilize later that week and begin
45 construction on March 25. They estimate 6-8 weeks to complete the project.

1 We continued attempts to coordinate with the various affected utility providers. PECO
2 will brace utility poles during the work, but we are awaiting a determination from them as
3 to how exactly they will brace them. We have submitted plans to Sunoco and Verizon,
4 and are still awaiting feedback from them.

5 We prepared a Construction Issue set of plans and specifications incorporating changes
6 from the four addenda, and the documents were issued to Ply-Mar and the Township.
7 We also prepared a CAD file and plan with critical survey information for the
8 Contractor's use in construction layout. Additionally, we reviewed a partial submission
9 of shop drawings from the Contractor.

10 Hershey's Mill PS Diversion: We issued a contract award letter to the Contractor,
11 Delaware Valley Utility Contractors (DVUC). We have also reviewed DVUC's contract
12 documents and have coordinated with them to have their insurance coverage revised to
13 comply with contract requirements.

14 DVUC proposes to begin work on May 6, 2013. We intend to issue the Notice to
15 Proceed with Construction by early April. They estimate approximately one month to
16 complete the project.

17 We prepared a Construction Issue set of plans and specifications incorporating changes
18 from the two addenda, and the documents were issued to the Township. We are also in
19 the process of reviewing shop drawings from the Contractor.

20 Reserve PS Elimination – We completed near-final Bid Plans and submitted them to the
21 Township for review. The specifications will be completed and submitted for Township
22 review. The specifications will be completed and submitted to the Township for review
23 by March 15.

24 The project will be put out to bid after the Reserve at Spring Meadows HOA has granted
25 the easement and rock borings are performed.

26 Chapter 94 Annual Reports – We have continued to collect data and information required
27 to prepare the reports. We analyzed portable and permanent meter data from calendar
28 year 2012, and we are in the process of preparing the reports for the Ridley Creek, West
29 Goshen, and Westtown Service Areas. DEP previously informed us that a full report is
30 not required for the Lockwood Chase STP.

- 31
32 3. **Big Fish Environmental Services, Inc.,** Scott Towler presented a report for February
33 2013. The following is a summary:

34 Treatment Process Operation

35 During February, there were no exceedances of the final effluent discharge limitations for
36 outfall 001. There was no discharge from outfall 002. The monthly average total
37 phosphorus concentration was 0.20 mg/L as compared to the discharge limitation of 0.5
38 mg/L. During the month, the final effluent total phosphorus concentration discharged
39 ranged from <0.14 mg/L to .026 mg/L.

40 Sequencing Batch Reactors (SBRs) number 1, 3, and 4 were in service during the month
41 of February. Process monitoring of each SBR included ammonia as N, nitrite as N,
42 nitrate as N, COD, SSV, MLSS and total phosphorus. Microscopic examinations and
43 physical observation of the SBR MLSS and foam color is ongoing.

44 Daily monitoring of the influent and final effluent 24-hour composites samples for total
45 phosphorus is ongoing. Daily analysis of the final effluent flow equalization grab sample
46 is total phosphorus is ongoing.

1 Addition of aluminum sulfate solution to the SBRs to assist with phosphorus removal
2 continued. The volume of aluminum sulfate solution to the SBRs was largely consistent
3 through February with increasing uniformity during the month. The addition of
4 Aluminum Sulfate Solution, using the LMI chemical feed pump, prior to the disc filters
5 has assisted with improving total phosphorus from the final effluent outfall.

6 SBR No 2 remains out of service. The remaining contents are continuously mixed and
7 are aerated (blower in hand mode at reduced speed) to prevent odors. Transfer of the
8 remaining mixed liquor will occur as freezing conditions are minimized.

9 Process Monitoring On-Line Instrumentation – Kershner Technologies installed a
10 ChemScan phosphate analyzer on January 29, 2013. Comparison data from the online
11 analyzer and on site testing is ongoing.

12 Representatives from the Hach Chemical Company have requested an opportunity to
13 conduct a pilot study demonstrating their online phosphorus monitoring system.

14 Coordination of a pilot study is planned to begin late March or April.

15 The flow meter appears to have malfunctioned as observed through recording
16 significantly higher flow volumes than the influent flow meter to the SBR. Allied
17 Control Services (ACS) was contacted to address the malfunction.

18 Solids Dewatering and Disposal – During the month, the centrifuge dewatering system
19 was placed in service. Sludge wasting to the sludge holding tanks and decanting of the
20 sludge holding tanks was ongoing. Process monitoring included pH, total alkalinity and
21 total solids.

22 Sludge holding tank No.1 was in service. The level at the beginning of the month was
23 4.93 feet and the level at the end of the month was 12.28 feet. The initial total solids
24 concentration was 0.66% and ended the month as 0.80% total solids. Zero (0) gallons of
25 supernatant were decanted during the month.

26 Sludge holding tank No. 2 was in service. The level at the beginning of the month was
27 14.48 feet and the level at the end of the month was 2.53 feet. The initial total solids
28 concentration was 0.87% and ended the month as 0.70% total solids. 27,475 gallons of
29 supernatant were decanted. Sludge was dewatered using the centrifuge.

30 Significant Storm Events – During February there were no significant precipitation
31 events impacting the treatment process.

32 Minor repairs and Preventative Maintenance:

- 33 • ACS repaired influent flow chart recorder.
- 34 • ACS provided a flow meter signal cable and connected the new influent “field” flow
35 meter to allow for flow proportioned composite sampling.
- 36 • Centrifuge gear box was inspected for routine O&M. No metal filings were observed.
- 37 • Centrifuge rear bearing is operating at a higher temperature than the front bearing.

38 The bearing temperature is generally around 150°F. Emergency shutdown is 212°F.
39 Centrifuge operators recommend corrective actions should the temperature rise above
40 180°F.

- 41 • Filed influent composite sampler controller failed. The controller from another
42 sampler was temporarily installed until the repaired unit is returned. A spare unit is
43 planned for purchase.

44 Mark asked Scott if they will have to put the sodash in the top. When Scott answered
45 yes, Mark mentioned that he wants to cut a path to make the process more efficient.

1 Scott feels that is a good idea but in the future maybe they should look at a Dry Feed
2 System.
3
4

5 **Any Other Matter**

6 1. Rick reported that Westtown is in the process of approving the demolition of the old
7 gas station, WAWA, and current PNC Bank at Rts. 3 & 352. The PNC Bank will build a new
8 building at the corner and a Rite Aid pharmacy will be built on the other lots. Their sewer use is
9 based on a percentage.
10

11 **Correspondence**

12 None
13

14 **Adjournment**

15 There being no further business, Jack moved to adjourn the meeting. Dana seconded the motion.
16 The motion passed unanimously. The meeting was adjourned at 8:00pm.
17

18 Respectfully submitted,
19
20

21 Ruth Kiefer
22 Recording Secretary



INVOICE

Newark, DE
302-655-4451 Fax: 302-654-2895

Remit Payment To:
Pennoni Associates Inc.
P.O. Box 827328
Philadelphia, PA 19182-7328

East Goshen Municipal Authority
1580 Paoli Pike
West Chester, PA 19380-6199
Attention: Louis F. Smith, Twp Mgr.

Invoice # : 540995
Invoice Date : 03/27/2013
Project : EGMA1107
Project Name : HersheyMill & Reserve PS Div Des
Per

For Services Rendered through: 3/17/2013

Hershey's Mill PS Diversion - Issued contract award letter to contractor; reviewed contractor's Form of Agreement, contract bonds, and insurance; issued Notice to Proceed.
Reserve PS Diversion - Updated PA One Call ticket; revised bid plans and submitted to Township for review.

Phase : 1 -- Design

Total Phase : 1 -- Design

Labor :	1,717.75
Expense :	0.00
Phase Total :	1,717.75

Phase : 7 -- Bid Assistance

Total Phase : 7 -- Bid Assistance

Labor :	308.75
Expense :	0.00
Phase Total :	308.75

Amount Due This Invoice

\$2,026.50

Fee :	69,200.00
Prior Billings :	61,580.75
Current Billings :	2,026.50
Total Billings :	63,607.25

*OK
MAM
4/6/2013*

Continued on next page..

INVOICES DUE ON RECEIPT. Invoices outstanding over 30 days will have a Service Charge of 1 1/2% per month.

...Continued from previous page

Phase : 1 -- Design

Labor Class	Hours/ Units	Rate	Amount
Project Engineer	10.00	95.00	950.00
Graduate Engineer	0.50	73.00	36.50
Engineering Technician 1	11.25	65.00	731.25
Labor Total:	21.75		1,717.75

Total Phase : 1 -- Design	Labor :	\$1,717.75
	Expense :	\$0.00

Phase : 7 -- Bid Assistance

Labor Class	Hours/ Units	Rate	Amount
Project Engineer	3.25	95.00	308.75
Labor Total:	3.25		308.75

Total Phase : 7 -- Bid Assistance	Labor :	\$308.75
	Expense :	\$0.00

Total Project : EGMA1107 -- HersheyMill & Reserve PS Div Des Per	Labor :	\$2,026.50
	Expense :	\$0.00

INVOICES DUE ON RECEIPT. Invoices outstanding over 30 days will have a Service Charge of 1 1/2% per month.

East Goshen Municipal Authority
 EGMA1107 Invoice Summary
 Invoice Date 03/17/2013

Project : Hershey Mill & Reserve PS Diverse Design & Permitting
Pennoni Job No. : EGMA1107
Invoice No. : 540995
Invoice Period : 2/11/2013 to 3/17/2013
Initial Authorization : \$ 60,200.00 **Date :** 7/7/2012
Changes : \$ 9,000.00 **Date :**
Contract Amount : \$ 69,200.00
Previously Invoiced : \$ 61,580.75
Current Invoice : \$ 2,026.50
Invoiced to Date (\$) : \$ 63,607.25
Invoiced to Date (%) : 92%
Remaining Budget (\$) : \$ 5,592.75
Remaining Budget (%) : 8%

Budget by Phase :
Phase No. 01
Phase Name : Hershey Mill & Reserve PS
Phase Budget : \$ 69,200.00
Previously Invoiced : \$ 61,580.75
Current Invoice : \$ 2,026.50
Invoiced to Date (\$) : \$ 63,607.25
Invoiced to Date (%) : 92%
Remaining Budget (\$) : \$ 5,592.75
Remaining Budget (%) : 8%

Comments : Hershey's Mill PS Diversion - Issued contract award letter to contractor; reviewed contractor's Form of Agreement, contract bonds, and insurance; issued Notice to Proceed. Reserve PS Diversion - Updated PA One Call ticket; revised bid plans and submitted to Township for review.



INVOICE

Newark, DE
302-655-4451 Fax: 302-654-2895

Remit Payment To:
Pennoni Associates Inc.
P.O. Box 827328
Philadelphia, PA 19182-7328

East Goshen Municipal Authority
1580 Paoli Pike
West Chester, PA 19380-6199
Attention: Louis F. Smith, Twp Mgr.

Invoice # : 540996
Invoice Date : 03/27/2013
Project : EGMA1109
Project Name : Marydell Pump Station Diversion

For Services Rendered through: 3/17/2013

Issued contract award letter to contractor; reviewed contractor's Form of Agreement, contract bonds, and insurance; coordinated revisions to insurance to include Pollution Liability; issued Notice to Proceed.

Phase : 2 -- Sewer Stakeout and Easements

Total Phase : 2 -- Sewer Stakeout and Easements

Labor :	47.50
Expense :	0.00
Phase Total :	47.50

Phase : 3 -- PaDEP Closure Plan

Total Phase : 3 -- PaDEP Closure Plan

Labor :	23.75
Expense :	0.00
Phase Total :	23.75

Phase : 4 -- PennDOT Highway Occupancy Permits

Total Phase : 4 -- PennDOT Highway Occupancy Permits

Labor :	297.75
Expense :	0.00
Phase Total :	297.75

Phase : 6 -- Additional Meetings

Total Phase : 6 -- Additional Meetings

Labor :	166.25
Expense :	0.00
Phase Total :	166.25

Amount Due This Invoice

\$535.25

Fee :	36,100.00
Prior Billings :	33,676.75
Current Billings :	535.25
Total Billings :	34,212.00

*OK
MSM
4/6/2013*

Continued on next page...

INVOICES DUE ON RECEIPT. Invoices outstanding over 30 days will have a Service Charge of 1 1/2% per month.

...Continued from previous page

Phase : 2 -- Sewer Stakeout and Easements

Labor Class	Hours/ Units	Rate	Amount
Project Engineer	0.50	95.00	47.50
Labor Total:	0.50		47.50

Total Phase : 2 -- Sewer Stakeout and Easements	Labor :	\$47.50
	Expense :	\$0.00

Phase : 3 -- PaDEP Closure Plan

Labor Class	Hours/ Units	Rate	Amount
Project Engineer	0.25	95.00	23.75
Labor Total:	0.25		23.75

Total Phase : 3 -- PaDEP Closure Plan	Labor :	\$23.75
	Expense :	\$0.00

Phase : 4 -- PennDOT Highway Occupancy Permits

Labor Class	Hours/ Units	Rate	Amount
Project Engineer	2.75	95.00	261.25
Graduate Engineer	0.50	73.00	36.50
Labor Total:	3.25		297.75

Total Phase : 4 -- PennDOT Highway Occupancy Permits	Labor :	\$297.75
	Expense :	\$0.00

Phase : 6 -- Additional Meetings

Labor Class	Hours/ Units	Rate	Amount
Project Engineer	1.75	95.00	166.25
Labor Total:	1.75		166.25

Total Phase : 6 -- Additional Meetings	Labor :	\$166.25
	Expense :	\$0.00

Total Project : EGMA1109 -- Marydell Pump Station Diversion	Labor :	\$535.25
	Expense :	\$0.00

INVOICES DUE ON RECEIPT. Invoices outstanding over 30 days will have a Service Charge of 1 1/2% per month.

East Goshen Municipal Authority
 EGMA1109 Invoice Summary
 Invoice Date 03/17/2013

Project : Marydell Pump Station Diversion
 Pennoni Job No. : EGMA1109
 Invoice No. : 540996
 Invoice Period : 2/15/2012 to 3/17/2013
 Initial Authorization : \$ 45,100.00 Date : 2/22/2012
 Changes : \$ - Date :
 Contract Amount : \$ 36,100.00
 Previously Invoiced : \$ 33,676.75
 Current Invoice : \$ 535.25
 Invoiced to Date (\$) : \$ 34,212.00
 Invoiced to Date (%) : 95%
 Remaining Budget (\$) : \$ 1,888.00
 Remaining Budget (%) : 5%

Budget by Phase :
 Phase No. 01
 Phase Name : Marydell Pump Station
 Phase Budget : \$ 36,100.00
 Previous Invoiced : \$ 33,676.75
 Current Invoice : \$ 535.25
 Invoiced to Date (\$) : \$ 34,212.00
 Invoiced to Date (%) : 95%
 Remaining Budget (\$) : \$ 1,888.00
 Remaining Budget (%) : 5%

Comments : Issued contract award letter to contractor; reviewed contractor's Form of Agreement, contract bonds, and insurance; coordinated revisions to insurance to include Pollution Liability; issued Notice to Proceed.



INVOICE

Newark, DE
302-655-4451 Fax: 302-654-2895

Remit Payment To:
Pennoni Associates Inc.
P.O. Box 827328
Philadelphia, PA 19182-7328

East Goshen Municipal Authority
1580 Paoli Pike
West Chester, PA 19380-6199
Attention: Louis F. Smith, Twp Mgr.

Invoice #: 540997
Invoice Date: 03/27/2013
Project: EGMA1301
Project Name: 2013 General Services

For Services Rendered through: 3/17/2013

Engineer's reports and attendance at February and March MA meetings, and respond to cost estimate questions from march meeting.

Phase : **** -- Professional Services

Total Phase : **** -- Professional Services

Labor :	947.50
Expense :	0.00
Phase Total :	947.50

Amount Due This Invoice

Fee :	10,000.00
Prior Billings :	908.75
Current Billings :	947.50
Total Billings :	1,856.25

\$947.50

Phase : **** -- Professional Services

Labor

Class	Hours/ Units	Rate	Amount
Authority Engineer	7.75	110.00	852.50
Project Engineer	1.00	95.00	95.00
Labor Total:	8.75		947.50

Total Phase : **** -- Professional Services

Labor : 947.50

Expense : 0.00

Total Project : EGMA1301 -- 2013 General Services

Labor : 947.50

Expense : 0.00

OK
M/S
4/6/2013

East Goshen Municipal Authority
EGMA1301 Invoice Summary
Invoice Date 03/17/2013

Project : 2013 General Services
Pennoni Job No. : EGMA1301
Invoice No. : 540997
Invoice Period : 2/11/2013 to 3/17/2013
Initial Authorization : \$ 10,000.00 **Date :** 1/9/2013
Changes : \$ - **Date :**
Contract Amount : \$ 10,000.00
Previously Invoiced : \$ 908.75
Current Invoice : \$ 947.50
Invoiced to Date (\$) : \$ 1,856.25
Invoiced to Date (%) : 19%
Remaining Budget (\$) : \$ 8,143.75
Remaining Budget (%) : 81%

Budget by Phase :

Phase No. ****
Phase Name : 2013 General Services
Phase Budget : \$ 10,000.00
Previousy Invoiced : \$ 908.75
Current Invoice : \$ 947.50
Invoiced to Date (\$) : \$ 1,856.25
Invoiced to Date (%) : 19%
Remaining Budget (\$) : \$ 8,143.75
Remaining Budget (%) : 81%

Comments : Engineer's reports and attendance at February and March MA meetings, and respond to cost estimate questions from March meeting.



PENNONI ASSOCIATES INC.
CONSULTING ENGINEERS

INVOICE

Newark, DE
302-655-4451 Fax: 302-654-2895

Remit Payment To:
Pennoni Associates Inc.
P.O. Box 827328
Philadelphia, PA 19182-7328

East Goshen Municipal Authority
1580 Paoli Pike
West Chester, PA 19380-6199
Attention: Louis F. Smith, Twp Mgr.

Invoice # : 540998
Invoice Date : 03/27/2013
Project : EGMA1302
Project Name : 2013 Semi-Annual I&I Reports

For Services Rendered through: 3/17/2013

Initiated meter analysis and preparation of March 2013 semi-annual I/I Report; coordinated potential portable meter relocation w/ M. Miller.

Phase : **** -- Professional Services

Total Phase : **** -- Professional Services

Labor : 752.00
Expense : 0.00
Phase Total : 752.00

Amount Due This Invoice

\$752.00

Fee : 10,000.00
Prior Billings : 2,494.00
Current Billings : 752.00
Total Billings : 3,246.00

Phase : **** -- Professional Services

Labor Class	Hours/Units	Rate	Amount
Project Engineer	1.00	95.00	95.00
Graduate Engineer	9.00	73.00	657.00
Labor Total:	10.00		752.00

Total Phase : **** -- Professional Services

Labor : \$752.00
Expense : \$0.00

Total Project : EGMA1302 -- 2013 Semi-Annual I&I Reports

Labor : \$752.00
Expense : \$0.00

OK
M. Miller
4/6/2013

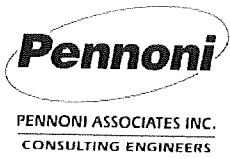
INVOICES DUE ON RECEIPT. Invoices outstanding over 30 days will have a Service Charge of 1 1/2% per month.

East Goshen Municipal Authority
 EGMA1302 Invoice Summary
 Invoice Date 03/17/2013

Project :	2013 Semi-Annual I&I Reports		
Pennoni Job No. :	EGMA1302		
Invoice No. :	540998		
Invoice Period :	2/11/2013	to	3/17/2013
Initial Authorization :	\$ 10,000.00	Date :	1/16/2013
Changes :	\$ -	Date :	
Contract Amount :	\$ 10,000.00		
Previously Invoiced :	\$ 2,494.00		
Current Invoice :	\$ 752.00		
Invoiced to Date (\$) :	\$ 3,246.00		
Invoiced to Date (%) :	32%		
Remaining Budget (\$) :	\$ 6,754.00		
Remaining Budget (%) :	68%		

Budget by Phase :	
Phase No.	****
Phase Name :	2013 Semi-Annual I&I
Phase Budget :	\$ 10,000.00
Previousy Invoiced :	\$ 2,494.00
Current Invoice :	\$ 752.00
Invoiced to Date (\$) :	\$ 3,246.00
Invoiced to Date (%) :	32%
Remaining Budget (\$) :	\$ 6,754.00
Remaining Budget (%) :	68%

Comments : Initiated meter analysis and preparation of March 2013 semi-annual I/I Report; coordinated potential portable meter relocations w/ M. Miller.



INVOICE

Newark, DE
302-655-4451 Fax: 302-654-2895

Remit Payment To:
Pennoni Associates Inc.
P.O. Box 827328
Philadelphia, PA 19182-7328

East Goshen Municipal Authority
1580 Paoli Pike
West Chester, PA 19380-6199
Attention: Louis F. Smith, Twp Mgr.

Invoice #: 540999
Invoice Date: 03/27/2013
Project: EGMA1303
Project Name: 2012 Chapter 94 Report

For Services Rendered through: 3/17/2013

Continued preparation, analyses, and obtaining information for Ridley Creek STP, West Goshen (Chester Creek), and Westtown Chapter 94 Reports.

Phase : **** -- Professional Services

Total Phase : **** -- Professional Services

Labor : 4,995.75
Expense : 0.00
Phase Total : 4,995.75

Amount Due This Invoice

\$4,995.75

Fee : 14,000.00
Prior Billings : 2,496.75
Current Billings : 4,995.75
Total Billings : 7,492.50

Phase : **** -- Professional Services

Labor Class	Hours/ Units	Rate	Amount
Authority Engineer	0.75	110.00	82.50
Project Engineer	3.50	95.00	332.50
Graduate Engineer	62.75	73.00	4,580.75
Labor Total:	67.00		4,995.75

Total Phase : **** -- Professional Services

Labor : \$4,995.75
Expense : \$0.00

Total Project : EGMA1303 -- 2012 Chapter 94 Report

Labor : \$4,995.75
Expense : \$0.00

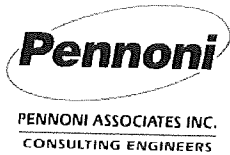
OK
MSM
4/6/2013

East Goshen Municipal Authority
EGMA1303 Invoice Summary
Invoice Date 03/17/2013

Project : 2012 Chapter 94 Report
Pennoni Job No. : EGMA1303
Invoice No. : 540999
Invoice Period : 2/11/2013 to 3/17/2013
Initial Authorization : \$ 14,000.00 **Date :** 1/16/2013
Changes : \$ - **Date :**
Contract Amount : \$ 14,000.00
Previously Invoiced : \$ 2,496.75
Current Invoice : \$ 4,995.75
Invoiced to Date (\$) : \$ 7,492.50
Invoiced to Date (%) : 54%
Remaining Budget (\$) : \$ 6,507.50
Remaining Budget (%) : 46%

Budget by Phase :
Phase No. ****
Phase Name : 2012 Chapter
94 Report
Phase Budget : \$ 14,000.00
Previousy Invoiced : \$ 2,496.75
Current Invoice : \$ 4,995.75
Invoiced to Date (\$) : \$ 7,492.50
Invoiced to Date (%) : 54%
Remaining Budget (\$) : \$ 6,507.50
Remaining Budget (%) : 46%

Comments : Continued preparation, analyses, and obtaining information for Ridley Creek STP, West Goshen (Chester Creek), and Westtown Chapter 94 Reports.



INVOICE

Newark, DE
302-655-4451 Fax: 302-654-2895

Remit Payment To:
Pennoni Associates Inc.
P.O. Box 827328
Philadelphia, PA 19182-7328

East Goshen Municipal Authority
1580 Pao!! Pike
West Chester, PA 19380-6199
Attention: Louis F. Smith, Twp Mgr.

Invoice # : 541000
Invoice Date : 03/27/2013
Project : EGMA1304
Project Name : Hershey Mill PS Div Construction Ph

For Services Rendered through: 3/17/2013

Prepared and issued Construction Issue plans and specifications; reviewed partial submission of shop drawings.

Phase : **** -- Professional Services

Total Phase : **** -- Professional Services

Labor : 2,580.50
Expense : 0.00
Phase Total : 2,580.50

Amount Due This Invoice

\$2,580.50

Fee : 20,000.00
Prior Billings : 0.00
Current Billings : 2,580.50
Total Billings : 2,580.50

Phase : **** -- Professional Services

Labor

Class	Hours/ Units	Rate	Amount
Project Engineer	9.00	95.00	855.00
Graduate Engineer	8.50	73.00	620.50
Engineering Technician I	17.00	65.00	1,105.00
Labor Total:	34.50		2,580.50

Total Phase : **** -- Professional Services

Labor : \$2,580.50
Expense : \$0.00

Total Project : EGMA1304 -- Hershey Mill PS Div Construction Ph

Labor : \$2,580.50
Expense : \$0.00

OK
4/6/2013

INVOICES DUE ON RECEIPT. Invoices outstanding over 30 days will have a Service Charge of 1 1/2% per month.

East Goshen Municipal Authority
 EGMA1304 Invoice Summary
 Invoice Date 03/17/2013

Project : Hershey Mill PS Div Construction Ph
Pennoni Job No. : EGMA1304
Invoice No. : 541000
Invoice Period : 2/11/2013 to 3/17/2013
Initial Authorization : \$ 20,000.00 **Date :** 1/16/2013
Changes : \$ - **Date :**
Contract Amount : \$ 20,000.00
Previously Invoiced : \$ -
Current Invoice : \$ 2,580.50
Invoiced to Date (\$) : \$ 2,580.50
Invoiced to Date (%) : 13%
Remaining Budget (\$) : \$ 17,419.50
Remaining Budget (%) : 87%

Budget by Phase :
Phase No. ****
Phase Name : Hershey Mill PS
 Div
Phase Budget : \$ 20,000.00
Previously Invoiced : \$ -
Current Invoice : \$ 2,580.50
Invoiced to Date (\$) : \$ 2,580.50
Invoiced to Date (%) : 13%
Remaining Budget (\$) : \$ 17,419.50
Remaining Budget (%) : 87%

Comments : Prepared and issued Construction Issue plans and specifications; reviewed partial submission of shop drawings.



PENNONI ASSOCIATES INC.
CONSULTING ENGINEERS

INVOICE

Newark, DE
302-655-4451 Fax: 302-654-2895

Remit Payment To:
Pennoni Associates Inc.
P.O. Box 827328
Philadelphia, PA 19182-7328

East Goshen Municipal Authority
1580 Paoli Pike
West Chester, PA 19380-6199
Attention: Louis F. Smith, Twp Mgr.

Invoice # : 541001
Invoice Date : 03/27/2013
Project : EGMA1305
Project Name : Marydell PS Diversion Construction

For Services Rendered through: 3/17/2013

Prepared and issued Construction Issue plans and specifications; prepared and issued construction stakeout CAD file and plan to contractor; reviewed partial submissions of shop drawings; set up and attended pre-construction meeting with Township and contractor; set up and attended separate pre-construction meeting with Township, contractor, PennDOT, and PECO; coordinated pole bracing w/PECO, plan review and utility locating w/Sunoco, and plan approval w/ Verizon.

Phase : **** -- Professional Services

Total Phase : **** -- Professional Services

Labor :	6,327.75
Expense :	0.00
Phase Total :	6,327.75

Amount Due This Invoice

\$6,327.75

Fee :	20,000.00
Prior Billings :	0.00
Current Billings :	6,327.75
Total Billings :	6,327.75

Phase : **** -- Professional Services

Labor

Class	Hours/ Units	Rate	Amount
Project Engineer	30.75	95.00	2,921.25
Technical Specialist	8.00	75.00	600.00
Graduate Engineer	21.75	73.00	1,587.75
Engineering Technician I	18.75	65.00	1,218.75
Labor Total:	79.25		6,327.75

Total Phase : **** -- Professional Services

Labor : \$6,327.75

Expense : \$0.00

Total Project : EGMA1305 -- Marydell PS Diversion Construction

Labor : \$6,327.75

Expense : \$0.00

OK MDR 4/6/2013

INVOICES DUE ON RECEIPT. Invoices outstanding over 30 days will have a Service Charge of 1 1/2% per month.

East Goshen Municipal Authority
 EGMA1305 Invoice Summary
 Invoice Date 03/17/2013

Project : Marydell PS Diversion Construction
 Pennoni Job No. : EGMA1305
 Invoice No. : 541001
 Invoice Period : 2/11/2013 to 3/17/2013
 Initial Authorization : \$ 20,000.00 Date : 1/16/2013
 Changes : \$ - Date :
 Contract Amount : \$ 20,000.00
 Previously Invoiced : \$ -
 Current Invoice : \$ 6,327.75
 Invoiced to Date (\$) : \$ 6,327.75
 Invoiced to Date (%) : 32%
 Remaining Budget (\$) : \$ 13,672.25
 Remaining Budget (%) : 68%

Budget by Phase :
 Phase No. ****
 Phase Name : Marydell PS Diversion
 Phase Budget : \$ 20,000.00
 Previously Invoiced : \$ -
 Current Invoice : \$ 6,327.75
 Invoiced to Date (\$) : \$ 6,327.75
 Invoiced to Date (%) : 32%
 Remaining Budget (\$) : \$ 13,672.25
 Remaining Budget (%) : 68%

Comments : Prepared and issued Construction Issue plans and specifications; prepared and issued construction stakeout CAD file and plan to contractor; reviewed partial submissions of shop drawings; set up and attended pre-construction meeting with Township and contractor; set up and attended separate pre-construction meeting with Township, contractor, PennDOT, and PECO; coordinated pole bracing w/PECO, plan review and utility locating w/Sunoco, and plan approval w/Verizon.



East Goshen Municipal Authority
1580 Paoli Pike
West Chester PA 19380

Page: 1
02/28/2013
Client No: 6604-001M
Invoice No. 107114

General Authority Services

Fees

Hours

02/04/2013	RFA	Telephone conference with A Zarro regarding dedication of sewer lines in Pulte's Applebrook project; telephone conference with R Smith regarding form of maintenance security for sewer lines.	0.60
02/05/2013	RFA	Review message from R Smith with bid tabulation for Marydell pump station diversion project.	0.30
	RFA	Review messages from D Barbato, R Smith and Authority Board members regarding bid tabulation discrepancies; draft additional language for dedication document for Pulte Applebrook project; Message to A Zarro Esq regarding dedication of Pulte sewer lines and right-of-way agreement.	2.10
02/06/2013	RFA	Review message from M Ellis regarding bid tabulation for Hershey's Mill pump station diversion project; review message from R Smith regarding bid tabulation for Hershey's Mill project; review message from A Zarro regarding dedication of Applebrook sewer lines (Pulte project).	0.90
02/08/2013	RFA	Review message from M Ellis regarding bid award letter; review Pennoni's tabulation of bids and bid bond submitted by Ply-Mar Const. Co.	0.70
	RFA	Review packet for 2/11/13 meeting of Municipal Authority.	0.50
02/11/2013	RFA	Review message from M Ellis transmitting Hershey's Mill pump station diversion project bid tabulation and engineer's recommendation letter; review Delaware Valley Utility Contractors, Inc. bid documents;	0.70
02/13/2013	RFA	Review message from M Ellis to successful bidder (Delaware Valley Utility Contractors) on Hershey's Mill pump station	

General Authority Services

		Hours	
	diversion project regarding insurance and bonding requirements.	0.40	
02/14/2013	RFA Review letter from M Ellis regarding Marydell pump station; review letter from M Ellis regarding Hershey's Mill pump station.	0.60	
02/22/2013	RFA Review messages from Alyson Zarro regarding maintenance security agreement revision to reflect cash escrow; Message to A Zarro accepting cash escrow concept.	0.70	
02/25/2013	RFA Review proposed maintenance security agreement, ROW and deed of dedication for public sewer lines at Applebrook; Message to A Zarro regarding cash escrow for pulte dedication.	0.80	
	For Current Services Rendered	<u>8.30</u>	<u>1,660.00</u>

Recapitulation

<u>Timekeeper</u>	<u>Hours</u>	<u>Hourly Rate</u>	<u>Total</u>
Robert F. Adams	8.30	\$200.00	\$1,660.00

Expenses

	Postage	1.12
	Total Expenses Thru 02/28/2013	<u>1.12</u>
	Previous Balance	\$1,406.80
	Total Current Charges	<u>1,661.12</u>
02/13/2013	Cost Expense Payment	-6.80
02/13/2013	Fee Payment	<u>-1,400.00</u>
	Total Payments	-1,406.80
	Balance Due	<u>\$1,661.12</u>

*OK RS
3/12/13*

To ensure proper credit, please write client number on your check when returning payment. Thank You.
 A finance charge of 1.25% per month (15% annually) may be charged on balances not paid 60 days after the invoice date.

Big Fish Environmental Services, Inc.c/o
Scott A. Towler
801 General Sterling Drive
West Chester, PA 19382

Invoice # 13-040130-2
Invoice Date 4/5/2013
Terms Due Upon Receipt

INVOICE

Bill to:

Mr. Rick Smith
Township Manager
East Goshen Township
c/o RCSTP & Lochwood
1580 Paoli Pike
West Chester, PA 19380

Services relating to the
Ridley Creek Sewage Treatment Plant for the
Month of March 2013

	Unit	Rate	Fee
<i>RCSTP O&M Fee, effective 9/1/2012</i>	Lump Sum	\$8,250.00	\$8,250.00
<i>Emergency Response</i>			
No emergency response during March 2013	No. of Hours NA	Rate NA	Fee \$0.00
<i>Sludge Dewatering</i>			
Three (3) 20-yard dumpsters were filled and removed for disposal. Manifest numbers 00376, 00377 and 00378. 176,271 gallons of sludge were dewatered.	No. of Hours 65.00	Rate \$55.00	Fee \$3,575.00
Total			\$11,825.00

Total Due to Scott A. Towler, PE SEO, LO

PAYMENT DUE UPON RECEIPT
PLEASE INCLUDE COPY OF INVOICE WITH REMITTANCE
PLEASE REFER TO INVOICE NUMBER ON REMITTANCE
THANK YOU

OK TCS
4-5-13

Big Fish Environmental Services, Inc.c/o
Scott A. Towler
801 General Sterling Drive
West Chester, PA 19382

Invoice # 13-040130-2
Invoice Date 4/5/2013
Terms Due Upon Receipt

RCSTP SLUDGE DEWATERING

Contractor	Date	Beginning Time	End Time	Total Hours
Jim Ross	3/6/2013	3:30 PM	10:30 PM	7.00
Matt Mullin	3/10/2013	8:15 AM	5:15 PM	9.00
Matt Mullin	3/12/2013	3:30 PM	7:00 PM	3.50
Matt Mullin	3/15/2013	3:20 PM	10:50 PM	7.50
Jim Ross	3/16/2013	4:00 PM	12:00 AM	8.00
Jim Ross	3/20/2013	2:00 PM	10:30 PM	8.50
Matt Mullin	3/23/2013	7:00 AM	4:00 PM	9.00
Jim Ross	3/27/2013	3:30 PM	10:00 PM	6.50
Matt Mullin	3/29/2013	2:45 PM	8:45 PM	6.00
Total				65.00

Memo

To: Municipal Authority

From: Tia Piccolo

Date: April 4, 2013

Re: Lochwood Plant Closing Labor Costs as of 03/27/13

Please note that from 1/1/13 - 3/27/13, \$1,894.91 has been reported in labor and equipment costs related to the closing of the Lochwood Plant.

We recommend that the Municipal Authority approve these charges.

Employees	Reg	OT
Total Hours	40	0
Total Cost	981.71	0

Equipment	
Total Hours	17
Total Cost	913.20



AIA Document G703™ - 1992

Continuation Sheet

AIA Document G702™-1992, Application and Certificate for Payment, or G732™-2009, Application and Certificate for Payment, Construction Manager as Adviser Edition, containing Contractor's signed certification is attached.
 In tabulations below, amounts are in US dollars.
 Use Column I on Contracts where variable retainage for line items may apply.

APPLICATION NO:

APPLICATION DATE:

PERIOD TO:

ARCHITECT'S PROJECT NO:

4/2/13
 3/27/13
 mes-2013

A ITEM NO.	B DESCRIPTION OF WORK	C SCHEDULED VALUE	D WORK COMPLETED		E THIS PERIOD	F MATERIALS PRESENTLY STORED (Not in D or E)	G TOTAL COMPLETED AND STORED TO DATE (D+E+F)	H BALANCE TO FINISH (C-G)	I RETAINAGE (f/ variable rate)
			FROM PREVIOUS APPLICATION (D + E)	THIS PERIOD					
1	Site Preparation (1 LS)	\$44,000.00	\$0.00	\$22,000.00	\$22,000.00		\$22,000.00	\$2,200.00	
2	E & S Controls (1 LS)	\$3,000.00	\$0.00	\$1,000.00	\$1,000.00		\$1,000.00	\$2,000.00	\$100.00
3	8" Main in Paved Area (0-10') (296 LF)	\$31,080.00	\$0.00	\$0.00	\$0.00		\$0.00	\$31,080.00	\$0.00
4	8" Main Paved Area (10-15') (88 LF)	\$11,440.00	\$0.00	\$0.00	\$0.00		\$0.00	\$11,440.00	\$0.00
5	8" Main Un-Paved (0-10') (114 LF)	\$5,130.00	\$0.00	\$0.00	\$0.00		\$0.00	\$5,130.00	\$0.00
6	8" Main Un-Paved (10-15') (255 LF)	\$11,475.00	\$0.00	\$0.00	\$0.00		\$0.00	\$11,475.00	\$0.00
7	MH-6 to EXMH-201 (82 LF)	\$24,600.00	\$0.00	\$0.00	\$0.00		\$0.00	\$24,600.00	\$0.00
8	J & B Boot Road (118 LF)	\$27,140.00	\$0.00	\$0.00	\$0.00		\$0.00	\$27,140.00	\$0.00
9	Manhole (0-10') (3 EA)	\$9,000.00	\$0.00	\$0.00	\$0.00		\$0.00	\$9,000.00	\$0.00
10	Manhole (10-15') (2 EA)	\$7,000.00	\$0.00	\$0.00	\$0.00		\$0.00	\$7,000.00	\$0.00
11	4" Service Lateral (1 EA)	\$1,000.00	\$0.00	\$0.00	\$0.00		\$0.00	\$1,000.00	\$0.00
12	Low Pressure Sewer Lat. (1 LS)	\$1,000.00	\$0.00	\$0.00	\$0.00		\$0.00	\$1,000.00	\$0.00
13	Full Depth Paving (275 SY)	\$22,000.00	\$0.00	\$0.00	\$0.00		\$0.00	\$22,000.00	\$0.00
14	Demo Pump Station (1 LS)	\$6,500.00	\$0.00	\$0.00	\$0.00		\$0.00	\$6,500.00	\$0.00
15	Traffic Maintenance (1 LS)	\$2,000.00	\$0.00	\$0.00	\$0.00		\$0.00	\$2,000.00	\$0.00
16	Mill & Overlay Paoli Pike (75 SY)	\$2,250.00	\$0.00	\$0.00	\$0.00		\$0.00	\$2,250.00	\$0.00
17	Curb Replacement (30 LF)	\$1,500.00	\$0.00	\$0.00	\$0.00		\$0.00	\$1,500.00	\$0.00
18	Misc Exc. & 2A Backfill (20 CY)	\$1,200.00	\$0.00	\$0.00	\$0.00		\$0.00	\$1,200.00	\$0.00
19	Misc. Exc. & Soil Backfill (20 CY)	\$600.00	\$0.00	\$0.00	\$0.00		\$0.00	\$600.00	\$0.00
20	Concrete Encasement (20 LF)	\$1,000.00	\$0.00	\$0.00	\$0.00		\$0.00	\$1,000.00	\$0.00
21	Mill & Overlay Paoli Pike (455 SY)	\$10,920.00	\$0.00	\$0.00	\$0.00		\$0.00	\$10,920.00	\$0.00
22	Soft Dig Test Pits (3 EA)	\$6,000.00	\$0.00	\$0.00	\$0.00		\$0.00	\$6,000.00	\$0.00
GRAND TOTAL						\$229,835.00	\$23,000.00	\$206,835.00	\$2,300.00

CAUTION: You should sign an original AIA Contract Document, on which this text appears in RED. An original assures that changes will not be obscured.

AIA Document G703™ - 1992. Copyright © 1963, 1965, 1966, 1967, 1970, 1978, 1983 and 1992 by The American Institute of Architects. All rights reserved. **WARNING: This AIA Document is protected by U.S. Copyright Law and International Treaties. Unauthorized reproduction or distribution of this AIA Document, or any portion of it, may result in severe civil and criminal penalties, and will be prosecuted to the maximum extent possible under the law.** Purchasers are permitted to reproduce ten (10) copies of this document when completed. To report copyright violations of AIA Contract Documents, e-mail The American Institute of Architects' legal counsel, copyright@aia.org 99260604

Mag Dev Design Project - Plymar Invoice

Memo

To: Municipal Authority
From: Jon Altshul
Re: MA February Financial Report
Date: April 4, 2013

The Municipal Authority recorded \$9,875.27 in expenses and \$4,004.89 in revenues (primarily from tap-in fees at Sorrell Hill) in the month of March, a difference of \$5,870.38. The fund balance is now \$49,363.73.

The expenses were due to the quarterly administrative chargeback and further labor and equipment costs incurred for Lockwood Elimination (see Tia's memo).

EAST GOSHEN TOWNSHIP
 1580 PAOLI PIKE
 WEST CHESTER, PA
 Municipal Authority
 March 2013

Account Title	Acct #	Annual Budget	Month To Date Actual	Year To Date Actual
MUNICIPAL AUTHORITY BEGINNING FUND BALANCE				
RCSTP BUDGET			55,234.11	
REVENUE				
INTEREST EARNED - RCSTP EXPANSION	07341 1020	50.00	3.97	12.85
GRANT REVENUE	07392 0800	0.00	0.00	0.00
TOTAL REVENUE		50.00	3.97	12.85
EXPENSES				
R.C.-CAP. PROJ.-ENGINEER	07424 7451	0.00	0.00	0.00
R.C. CAP EXPANSION GEN'L CONTRACTOR	07424 7452	0.00	0.00	0.00
R.C. CAP EXPANSION - ELECTRICAL	07424 7453	0.00	0.00	0.00
R.C. CAP EXP CONTINGENCY CAPITAL	07424 7454	0.00	0.00	0.00
R.C. CAP EXP CONTINGENCY ONGOING	07424 7455	0.00	0.00	0.00
R.C. CAP EXP ADDITIONAL CONTINGENCY	07424 7456	0.00	0.00	0.00
TRANSFER TO AUTHORITY CAP FUND	07492 0990	992,470.00	0.00	0.00
TOTAL EXPENSES		992,470.00	0.00	0.00
RCSTP NET RESULT		(992,420.00)	3.97	12.85

EAST GOSHEN TOWNSHIP
 1580 PAOLI PIKE
 WEST CHESTER, PA
 Municipal Authority
 March 2013

Account Title	Acct #	Annual Budget	Month To Date Actual	Year To Date Actual
OPERATING BUDGET				
REVENUE				
INTEREST EARNINGS	07341 1000	50.00	0.92	2.14
C.C. TAPPING FEES	07364 1100	128,000.00	0.00	0.00
R.C.TAPPING FEES	07364 1110	2,000.00	4,000.00	4,000.00
CONNECTION FEES - SEWER	07364 1130	0.00	0.00	1,689.64
MISCELLANEOUS REVENUE	07380 1000	1,000.00	0.00	423.36
TRANSFER FROM SEWER OPERATING	07392 0500	121,696.00	0.00	0.00
TOTAL REVENUE		252,746.00	4,000.92	6,115.14
EXPENSES				
ADMINISTRATIVE WAGES	07424 1400	33,547.00	7,980.36	7,980.36
MISCELLANEOUS EXPENSE	07424 3000	5,000.00	0.00	1,450.00
MUNIC.AUTH.-AUDITING	07424 3110	8,843.00	0.00	0.00
ENGINEERING SERVICES	07424 3130	35,000.00	0.00	4,803.50
LEGAL SERVICES	07424 3140	7,000.00	0.00	4,695.90
M.C.-DVRFA-DEBT SERVICE	07471 1000	20,720.00	0.00	0.00
M.C.-DVRFA-INTEREST PAYMN	07472 1000	6,003.00	0.00	0.00
M.C.-DVRFA-INTEREST PAYMN	07472 1010	5,583.00	0.00	0.00
TOTAL EXPENSES		121,696.00	7,980.36	18,929.76
OPERATING NET RESULT		131,050.00	(3,979.44)	(12,814.62)

EAST GOSHEN TOWNSHIP
 1580 PAOLI PIKE
 WEST CHESTER, PA
 Municipal Authority
 March 2013

Account Title	Acct #	Annual Budget	Month To Date Actual	Year To Date Actual
CAPITAL BUDGET				
REVENUE				
LOAN PROCEEDS-SEWER PROJECT	07392 0804	992,470.00	0.00	0.00
TRANSFER FROM SEWER CAP RESERVE	07392 0900	556,769.00	0.00	30,000.00
TOTAL REVENUE		1,549,239.00	0.00	30,000.00
EXPENSES				
MARYDELL PUMP STATION - ENGINEER	07425 1000	25,000.00	0.00	11,482.50
MARYDELL PUMP STATION -CONSTRUCTION	07425 2000	170,000.00	0.00	0.00
LOCHWOOD ABANDONMENT ENGINEER	07424 7475	0.00	0.00	1,086.00
LOCHWOOD ABANDONMENT CONSTRUCTION	07424 7476	55,769.00	0.00	246.01
LOCHWOOD ELIMINATION PHASE 2	07424 7477	0.00	1,894.91	2,094.91
HERSHEY MILL STATION - ENGINEER	07426 1000	25,000.00	0.00	7,829.74
HERSHEY MILL STATION - CONSTRUCTION	07426 2000	46,000.00	0.00	0.00
RESERVE PUMP STATION - ENGINEER	07427 1000	25,000.00	0.00	6,979.76
RESERVE PUMP STATION - CONSTRUCTION	07427 2000	93,000.00	0.00	0.00
RESERVOIR PUMP STATION - ENGINEER	07428 1000	0.00	0.00	0.00
RESERVOIR PUMP STATION CONSTRUCTION	07428 2000	0.00	0.00	0.00
TOTAL EXPENSES		439,769.00	1,894.91	29,718.92
CAPITAL NET RESULT		1,109,470.00	(1,894.91)	281.08
MUNICIPAL AUTHORITY ENDING FUND BALANCE				
			49,363.73	

MGRP18 run by BRIAN 10 : 39 AM

Acct #	Per	Src	Trx #	Debits	Credits	Beg/End Bal	Date	Check/Ref #	ID #	Name/Description
07341-1000	INTEREST EARNINGS					0.00				
	1301	JE	36010		0.74		02/05/13	INTEREST		INTEREST EARNED JANUARY 2013 07 FUND
				0.00	0.74	-0.74				
	1302		36396		0.48		03/04/13	INTEREST		INTEREST EARNED FEB. 2013 07 FUND
				0.00	0.48	-1.22				
	1303		36759		0.92		04/02/13	INTEREST		INTEREST EARNED MARCH 2013 07 FUND
				0.00	0.92	-2.14				
				0.00	2.14	-2.14				
07341-1020	INTEREST EARNED - RCSTP EXPANSION					0.00				
	1301		36011		3.97		02/05/13	INTEREST		INTEREST EARNED JANUARY 2013 07 CONSTRUCTION FUND
				0.00	3.97	-3.97				
	1302		36397		4.91		03/04/13	INTEREST		INTEREST EARNED FEB. 2013 07 CONSTRUCTION FUND
				0.00	4.91	-8.88				
	1303		36760		3.97		04/02/13	INTEREST		INTEREST EARNED MARCH 2013 07 CONSTRUCTION FUND
				0.00	3.97	-12.85				
				0.00	12.85	-12.85				
07364-1110	R.C.TAPPING FEES					0.00				
	1301		35931	2,000.00			01/30/13	REV TRX		REVERSE TRX #32779 TAP IN FEE FOR 913 SORRELL HILL
			35934		2,000.00		01/30/13	REV TRX		RE-REVERSE TRX 35931 FOR 913 SORRELL HILL TAP IN FEES
				2,000.00	2,000.00	0.00				
	1303	RE	36430		2,000.00		03/05/13	36430 1		TAP IN FEE - 916 SORRELL HILL
			36431		2,000.00		03/05/13	36431 1		TAP IN FEE - 911 SORRELL HILL
				0.00	4,000.00	-4,000.00				
				2,000.00	6,000.00	-4,000.00				
07364-1130	CONNECTION FEES - SEWER					0.00				
	1302	CR	36075		423.00		02/08/13	264	7195	1 JACOBS, ROBERT & CHERYL
					423.00		02/08/13	755	7193	1 GEORGE SMITH & CHRISTINA CONLE
			***	0.00	846.00	***				

MGRP18 run by BRIAN 10 : 39 AM

Acct #	Per	Src	Trx #	Debits	Credits	Beg/End Bal	Date	Check/Ref #	ID #	Name/Description
07364-1130	1302	CR	36147		423.00		02/13/13	11	6577	1 PAPPANO, JOSEPH & PATRICIA
					421.00		02/13/13	11	7196	1 PAPPANO, JOSEPH & PATRICIA
			***	0.00	844.00	***				
			36193		423.00		02/15/13	2173	7194	1 STOFFLET, MICHAEL
	JE		36174	282.24			02/14/13	PINE ROCK		ANNUAL PINE ROCK INSTALLMENT
			36194	141.12			02/15/13	PINE ROCK		ANNUAL PINE ROCK INSTALLMENT
				423.36	2,113.00	-1,689.64				
				423.36	2,113.00	-1,689.64				
07380-1000	MISCELLANEOUS REVENUE					0.00				
			36174		282.24		02/14/13	PINE ROCK		ANNUAL PINE ROCK INSTALLMENT
			36194		141.12		02/15/13	PINE ROCK		ANNUAL PINE ROCK INSTALLMENT
				0.00	423.36	-423.36				
				0.00	423.36	-423.36				
07392-0900	TRANSFER FROM SEWER CAP RESERVE					0.00				
			36187		30,000.00		02/15/13	XFER		XFER \$ FROM 9100.1000 TO 7100.1000 TO COVER MA EXPENSES
				0.00	30,000.00	-30,000.00				
				0.00	30,000.00	-30,000.00				
07424-1400	ADMINISTRATIVE WAGES					0.00				
	1303	CD	36711	7,980.36			03/28/13	2166		425 EAST GOSHEN TOWNSHIP 1ST QTR.2013 REIMBURSMNT TO GENE FUND
				7,980.36	0.00	7,980.36				
				7,980.36	0.00	7,980.36				
07424-3000	MISCELLANEOUS EXPENSE					0.00				
	1301		35598	500.00			01/03/13	2153		2737 DEP - COMMONWEALTH OF PA NEDES PERMIT - 2013 MINOR SEWAGE FACILITY
			35783	950.00			01/18/13	2158		2132 PENNSYLVANIA MUNICIPAL AUTHORITIES ASSOC 2013 ACTIVE MEMBERSHIP DUES
				1,450.00	0.00	1,450.00				
				1,450.00	0.00	1,450.00				
07424-3130	ENGINEERING SERVICES					0.00				
			35695	3,264.75			01/15/13	2156		1052 PENNONI ASSOCIATES INC. SERV.THRU 12/9/12 2012 GEN.SERV

MGRP18 run by BRIAN 10 : 39 AM

Acct #	Per	Src Trx #	Debits	Credits	Beg/End Bal	Date	Check/Ref #	ID #	Name/Description
			3,264.75	0.00	3,264.75				
1302		36119	1,538.75			02/12/13	2162	1052	PENNONI ASSOCIATES INC. SERV.THRU 1/13/13 GEN.SERVICES 2
			1,538.75	0.00	4,803.50				
			4,803.50	0.00	4,803.50				
07424-3140		LEGAL SERVICES			0.00				
1301		35695	3,289.10			01/15/13	2155	528	GAWTHROP GREENWOOD & HALSTED LEGAL SERV. 11/9-11/30/12 GEN.AU
			3,289.10	0.00	3,289.10				
1302		36119	1,406.80			02/12/13	2161	528	GAWTHROP GREENWOOD & HALSTED LEGAL SERVICE - JAN. 2013 GEN.AU
			1,406.80	0.00	4,695.90				
			4,695.90	0.00	4,695.90				
07424-7475		LOCHWOOD ABANDONMENT ENGINEER			0.00				
1301		35695	511.50			01/15/13	2156	1052	PENNONI ASSOCIATES INC. SERVICES THRU 12/9/12 HERSHEY M PUMP STATION MUFFIN MONSTER
			511.50	0.00	511.50				
1302		36119	574.50			02/12/13	2162	1052	PENNONI ASSOCIATES INC. SERV.THRU 1/13/13 H.MILL PS MUF MONSTER DESIGN
			574.50	0.00	1,086.00				
			1,086.00	0.00	1,086.00				
07424-7476		LOCHWOOD ABANDONMENT CONSTRUCTION			0.00				
1301		35598	246.01			01/03/13	2152	317	CONTRACTOR'S CHOICE ORANGE SAFETY FENCE, STAKES & PA
		35695	1,482.40			01/15/13	2154	425	EAST GOSHEN TOWNSHIP LOCHWOOD PLANT CLOSING COSTS-LAB
		35698	-1,482.40			01/15/13	2154	425	EAST GOSHEN TOWNSHIP VOID CK. 2154 - DUPLICATE PAYMEN
			246.01	0.00	246.01				
			246.01	0.00	246.01				
07424-7477		LOCHWOOD ELIMINATION PHASE 2			0.00				
		35872	379.90			01/24/13	2159	2762	A.J. BLOSENSKI INC. 30 YDS. ROLLOFF HAULING & LANDFI FEE

MGRP18 run by BRIAN 10 : 39 AM

Acct #	Per	Src Trx #	Debits	Credits	Beg/End Bal	Date	Check/Ref #	ID #	Name/Description
			379.90	0.00	379.90				
1302		36189	200.00			02/15/13	2165	2762	A.J. BLOSENSKI INC. 30 YARD ROLLOFF HAULING FEE
	JE	36105		379.90		02/11/13	VOID CHECK		VOID CK. 2159 - OVERCHARGED BY VENDOR - RETURNED CHECK
			200.00	379.90	200.00				
1303 CD		36711	1,894.91			03/28/13	2167	425	EAST GOSHEN TOWNSHIP 1/1-3/27/13 REIMBURSE GENERAL FU FOR LOCHWOOD PLANT CLOSING LABOR
			1,894.91	0.00	2,094.91				
			2,474.81	379.90	2,094.91				
07425-1000					0.00				
1301		35695	5,493.75			01/15/13	2156	1052	PENNONI ASSOCIATES INC. SERVICES THRU 12/9/12 MARYDELL
			5,493.75	0.00	5,493.75				
1302		36119	5,988.75			02/12/13	2162	1052	PENNONI ASSOCIATES INC. SERV.THURU 1/13/13 MARYDELL PS
			5,988.75	0.00	11,482.50				
			11,482.50	0.00	11,482.50				
07426-1000					0.00				
1301		35695	2,047.12			01/15/13	2156	1052	PENNONI ASSOCIATES INC. SERV.THURU 12/9/12 HERSHEY MILL
		35783	250.00			01/18/13	2157	263	CHESTER COUNTY CONSERVATION DISTRICT PERMIT FEE - HERSHEY MILL DAM
			2,297.12	0.00	2,297.12				
1302		36119	2,600.00			02/12/13	2160	2911	EARTHCORE SERVICES LLC MOBILIZATION ATV RIG-HMPS DIVERS
			2,932.62			02/12/13	2162	1052	PENNONI ASSOCIATES INC. SERV.THURU 1/13/13 HERSHEY MILL
		***	5,532.62	0.00 ***					
			5,532.62	0.00	7,829.74				
			7,829.74	0.00	7,829.74				
07427-1000					0.00				
1301		35695	2,047.13			01/15/13	2156	1052	PENNONI ASSOCIATES INC. SERV.THURU 12/9/12 RESERVE PS
			2,047.13	0.00	2,047.13				

Report Date 04/04/13

GL Transaction Details

PAGE 5

MGRP18 run by BRIAN 10 : 39 AM

Acct #	Per	Src	Trx #	Debits	Credits	Beg/End Bal	Date	Check/Ref #	ID #	Name/Description
07427-1000	1302	CD	36119	2,932.63			02/12/13	2162	1052	PENNONI ASSOCIATES INC. SERV.THRU 1/13/13 RESERVE PS
				1,000.00			02/12/13	2163	3027	SCHRODER, JOHN SEWER RIGHT OF WAY
				1,000.00			02/12/13	2164	3029	WILLOW POND HOMEOWNERS ASSOCIATION SEWER RIGHT OF WAY
			***	4,932.63	0.00	***				
				4,932.63	0.00	6,979.76				
				6,979.76	0.00	6,979.76				

Beg Bal		0.00		51,451.94	38,931.25	12520.69				

Memo
East Goshen Township
1580 Paoli Pike
West Chester, PA 19380

Voice (610) 692-7171
Fax (610) 425-8950
E-mail rsmith@eastgoshen.org

Date: April 4, 2013
To: Municipal Authority
From: Rick Smith, Township Manager
Re: 2013 Budget

Now that we have firm numbers for the Marydell Pump Station Diversion Project and the Hershey Mill Pump Station Diversion Project it would be appropriate to amend the Budget.

Suggested Motion: I move that we amend the 2013 Municipal Authority Budget as follows:

	2013 Adopted	Change	2013 Revised
Transfer from Sewer Cap Reserve	\$556,769	+\$230,000	\$786,769
Marydell Pump Station - Engineer	\$25,000	+\$6,000	\$31,000
Marydell Pump Station - Construction	\$170,000	+\$80,000	\$250,000
Hershey Mill Pump Station - Engineer	\$25,000	+\$10,000	\$35,000
Hershey Mill Pump Station - Construction	\$46,000	+\$134,000	\$180,000

Memo
East Goshen Township
1580 Paoli Pike
West Chester, PA 19380

Voice (610) 692-7171
Fax (610) 425-8950
E-mail rsmith@eastgoshen.org

Date: April 4, 2013
To: Municipal Authority
From: Rick Smith, Township Manager
Re: 2013 Goals and Action Items

Goals - The Municipal Authority has 3 goals for 2013. Status of each task that needs to be completed to achieve the goal is as follows:

Marydell Pump Station Elimination Project– Complete construction

Engineering, Permitting, ROW Acquisition and Bidding Project are complete. The Notice to Proceed has been issued and the project is currently under construction.

Hershey Mill Pump Station Diversion Project – Complete construction

Engineering, Permitting, ROW Acquisition and Bidding Project are complete. The Notice to Proceed has been issued although the actual construction has not started.

Reserve Pump Station Elimination Project – Complete construction

Engineering and Permitting are complete. Still need to obtain ROW from the Reserve at Spring Meadows. One ROW still needs to be acquired we need to conduct test borings then go out to bid. Bid Documents are being finalized.

Comprehensive Plan - The Comp Plan lists 4 Recommendations that are applicable to the Authority and the Action Items needed to address each and their status are as follows:

7B-3 Evaluate the Township Act 537 Plan (1997) and update as needed to address areas lacking service in the Township.

Review the Township Act 537 Plan to ensure consistency with the Comprehensive Plan (Immediate and High)

The Authority completed a Wastewater Needs Evaluation in 2007 that concluded that the RCSTP should be expanded and that several diversion projects should be implemented.

Based on the review of the Act 537 Plan, implement recommendations and update as necessary (Immediate and Medium)

The Authority has been working to implement the recommendations in the 2007 Needs Evaluation. These include revising the Act 537 Plan as required and the construction of the following improvements: The expansion of the RCSTP is completed. Lockwood STP and been decommissioned and the flow diverted, the Marydell and Hershey Mill PS projects are under construction. The Reserve PS is ready for bidding once the final ROW has been acquired. Act 537 Planning on the Reservoir Road PS will start in 2014.

Review Township Act 537 Plan at a minimum of bi-annually or as often as necessary (On-going and Medium)

This is done on an as-needed basis

7B-4 Evaluate the need to provide sewer service across Township boundaries

Consider the cost-effectiveness of extending services to area outside the Township (On-going and High)

This was looked at during the 2007 Needs Evaluation. The Authority responded positively to a capacity request from the developer of a Willistown property in 2010

7B-5 Provide for the upgrading of existing public sewer lines and wastewater treatment facilities

Evaluate new technologies and existing equipment needs. (On-going and Medium)

The RCSTP was expanded and upgraded.

Evaluate the existing sewer system lines and connections to ensure that the system it is free of stormwater infiltration and other problems (On-going and High)

The Authority has an on-going program to identify and correct I&I problems. Semiannual reports are provided to the Authority.

9D-1 Review and update the mission statement for each of the Townships Authorities, Boards and Commissions

ABC's should review their mission statements as required (On-going and High)

The Authority's mission (purpose) statement is set forth in the Articles of Incorporation.

Provide an annual report including activities and decisions by each of the ABCs. (On-going and High)

The Authority provides an annual update at the Annual Planning Session in January.

ABC shall develop by-laws to cover day to day operations (Immediate and High)

The Authority adopted by-laws in 1997 and has adopted several resolution that address other operational issues.

APRIL 2013
EAST GOSHEN MUNICIPAL AUTHORITY GOALS

ON-GOING

1. Submit an article for each newsletter.
 - a. Need by 3/1/13 - **Jack**
 - b. Need by 6/1/13
 - c. Need by 9/1/13
 - d. Need by 12/1/13

2. Attend West Goshen Meetings quarterly – more often if needed.
 - a. 1st Quarter (March) - **Ed**
 - b. 2nd Quarter (June)
 - c. 3rd Quarter (September)
 - d. 4th Quarter (December)

3. Respond to capacity requests in 45 days or less.

4. Continue to implement I & I Plan **March Report is in the Packet**

5. Operate RCSTP in compliance with NPDES Permit **January, February, March**

PROJECTS

1. Lockwood – Final Restoration

2. Marydell Pump Station – Construction – Bid awarded, **Notice to proceed issued and construction has commenced**

3. Hershey Mill Pump Station – Construction - Bid awarded, **Notice to proceed issued and construction has not commenced**

4. Reserve Pump Station – Construction – **Waiting on easement from the Reserve**

5. Borrowing – Reimburse Capital Reserve for design and construction funds.

Memo
East Goshen Township
1580 Paoli Pike
West Chester, PA 19380

Voice (610) 692-7171

Fax (610) 425-8950

E-mail rsmith@eastgoshen.org

Date: April 5, 2013

To: Municipal Authority

From: Rick Smith, Township Manager

Re: Pulte Project

Pulte is in the process of finishing up their project at Applebrook. Attached are the legal documents that need to be executed so that the Authority can accept dedication of the sewer lines.

Bob Adams and Mike Ellis are finalizing their review of the documents, and I expect to have final copies at the meeting.

Suggested Motion: I move that we authorize the execution of the easement agreement and maintenance bond for the sewer lines in the Pulte Development at Applebrook subject to confirmation from the Authority Solicitor and Engineer that they are acceptable.

NAME OF DEVELOPMENT: PRESERVE AT APPLEBROOK

AMOUNT OF SECURITY: \$24,566.25

TYPE OF SECURITY: () CASH ESCROW () LETTER OF CREDIT
() BOND WITH SURETY

MAINTENANCE SECURITY AGREEMENT

THIS AGREEMENT, made this _____ day of _____, 2013, by PULTE HOMES OF PA, LIMITED PARTNERSHIP, a Michigan corporation, 222 Mt. Airy Road, Suite 210, Basking Ridge, New Jersey 07920 (hereinafter called "Developer") and EAST GOSHEN MUNICIPAL AUTHORITY, Chester County, Pennsylvania, 19380 (hereinafter called "Authority").

WHEREAS, the Developer has heretofore applied for and obtained permission to develop and/or subdivide certain lands, more fully described in the publicly recorded subdivision and land development plan, as more fully appears in the Office for the Recording of Deeds in and for Chester County, in accordance with the terms and conditions of the final approval of the subdivision and land development plan designated as "Preliminary/Final Subdivision/Land Development Plan for Applebrook" prepared by Chester Valley Engineers, Inc. dated February 23, 2005 and last revised October 18, 2005; and

WHEREAS, the Developer has installed, constructed, and completed certain sanitary sewer public improvements, in accordance with the aforesaid plan and approval, which are listed as items 8 through 11 on Exhibit "A" attached hereto and made a part hereof ("Improvements"); and

WHEREAS, the Developer has offered to dedicate said Improvements to the Authority; and

WHEREAS, the Developer and East Goshen Township ("Township") have executed a "Subdivision and Land Development Improvement and Maintenance Agreement" (hereinafter called "the Agreement"), whereby Developer is obligated to repair or replace all defects in workmanship and materials appearing in the public Improvements and to repair all defects and damages caused by lack of structural integrity or failure of the Improvements to function in accordance with the design and specifications as depicted on the final plan and the accompanying approval documents, where said defects appear within eighteen (18) months from the date thereof; and

WHEREAS, it is a condition of the aforesaid Agreement that the Developer must deposit with the Authority financial security in the sum of fifteen percent (15%) of the cost of the public Improvements as described and established in the Agreement.

NOW, THEREFORE, intending to be legally bound hereby, the parties hereto do agree as follows:

1. The Developer agrees to keep, reiterates and reaffirms its obligations of maintenance of the Improvements, as more fully set forth in the Agreement, between Developer and Township, the terms of which are incorporated herein by reference.

2. Simultaneously with the execution of this Maintenance Security Agreement, the Developer has provided for the deposit with the Authority of financial security in the sum of Twenty-Four Thousand Five Hundred Sixty-Six and 24/100 (\$24,566.25) Dollars, which amount is equal to fifteen percent (15%) the cost of the required public Improvements and which the financial security is herewith posted by the establishment of a cash escrow

account subject to the terms and conditions of this Agreement. The Authority hereby acknowledges the receipt of said financial security.

3. Although the financial security is limited to fifteen (15%) percent of the cost of said public Improvements, the Developer shall be liable, nevertheless, for the full cost of repair or replacement due to defects in workmanship and materials appearing in the public Improvements and for the full cost of repair of all defects or damage caused by lack of structural integrity or failure of the improvement to function in accordance with the design and specifications as depicted on the final plan, where said defects appear within eighteen (18) months from the date hereof.

4(a). Except as provided by subsection (b) hereof, the Authority shall not proceed against the Developer under this agreement unless notice describing any defective condition or failure of the Improvements to function in accordance with the final plans has been given. The Authority shall give said notice to the Developer as soon as practical after the Authority has actual notice of the said condition. The Developer shall inform the Authority in writing within ten (10) days after receipt of the aforesaid notice from the Authority of a condition(s) requiring repair work or replacement of material, stating the Developer's intention to proceed with such repair or replacement, or both, as applicable. If the Developer's communication is not received within that time, the Authority may proceed against the established escrow account.

The Developer shall have thirty (30) days from the Authority's notice within which to commence any repair work or replacement of materials. If said work or replacement is not commenced within said thirty (30) days or if said work is not diligently pursued and continued, the Authority, in addition to any

other legal or equitable remedies it has, may draw down the required financial security and cure the Developer's default by withdrawing from the established security so much thereof as is necessary to cure the Developer's default, up to the full amount thereof.

4(b). Where the Authority reasonably determines that an emergency exists which requires immediate corrective action and makes prior notification of the Developer pursuant to subsection (a) impracticable under the circumstances, the Authority may take appropriate corrective measures and proceed to recover the costs thereof against the Developer by withdrawing from the established financial security so much thereof as is necessary to cure such default. The Authority will attempt to notify the Developer at the address listed in paragraph 4(c) below by phone or by written notice of the existence of the emergency as soon as possible after the same comes to the Authority's attention, but failure of the Authority to successfully notify the Developer shall have no affect upon the Authority's right to proceed against the escrow. Authority may take this action without the prior consent or approval of the Developer or the Escrow Agent.

4(c). All notices given hereunder shall be by regular mail. The addresses for service of notice are as follows:

DEVELOPER: Pulte Homes of PA, Limited Partnership
222 Mt. Airy Road, Suite 210
Basking Ridge, New Jersey 07920

Authority: East Goshen Municipal Authority
1580 Paoli Pike
West Chester, Pennsylvania 19380

5. The financial security remaining after the completion and acceptance of any maintenance work required under the terms of the referenced Agreement, and upon completion of all of the conditions of said Agreement, including the expiration of the eighteen (18) month period thereof, shall be released to the Developer, within a reasonable period of time after the Authority determines compliance with all provisions of the Agreement.

6. In addition to the remedies provided herein, Authority may pursue any other legal or equitable remedies which it may have against Developer to enforce Developer's obligations hereunder.

IN WITNESS WHEREOF, the parties hereto have hereunto set their hands and seals or caused this agreement to be duly executed by their respective duly authorized officers the day and year first above written.

(Signatures on the next page)

WITNESS:

DEVELOPER

PULTE HOMES OF PA, LIMITED
PARTNERSHIP, a Michigan
limited partnership
By: PH 50 LLC, a Michigan
limited liability company, its
general partner

By: _____

Name:
Title:

Address: 222 Mt. Airy Road, Suite 210

Basking Ridge, New Jersey 07920

Telephone Number: Attn. Bill Creeger, 215-778-7194

ATTEST:

EAST GOSHEN MUNICIPAL
AUTHORITY

Secretary

Chairman

EXHIBIT "A"

February 4, 2013

Maintenance Bond

PROJECT NAME: Applebrook
 DEVELOPER: Pella Home Corporation
 TELEPHONE: 215-488-3558

EAST GOSHEN TOWNSHIP
 1100 FACU PIKE
 WEST CHESTER, PA 19380

ITEM NO.	DESCRIPTION	QTY	UNIT	COST	TOTAL	QTY	TOTAL
DEMOLITION							
1.	Conc Curbing	3,150	LF	\$ 6.00	\$ 18,900.00	0	\$ 0.00
2.	Pavements	6,450	SY	\$ 2.85	\$ 18,382.50	0	\$ 0.00
	Sub-Total Demolition				\$ 37,282.50		\$ 0.00
EROSION CONTROL							
3.	LOO Distention	5455	LF	\$ 2.00	\$ 10,910.00	0	\$ 0.00
4.	8" J" "	2,065	LF	\$ 2.20	\$ 4,541.00	0	\$ 0.00
5.	Bufferwalls	685	LS	\$ 15.00	\$ 10,275.00	0	\$ 0.00
6.	Construction Entrances	2	EA	\$ 2,400.00	\$ 4,800.00	0	\$ 0.00
7.	RTSR/SM ROW's	60,000	BF	\$ 0.36	\$ 21,600.00	0	\$ 0.00
	Sub-Total Erosion Control				\$ 51,876.00		\$ 0.00
BANITARY SEWER							
8.	8" ROR	1065	LF	\$ 36.00	\$ 78,430.00	1,045	\$ 75,430.00
9.	Structures	12	EA	\$ 2,600.00	\$ 31,200.00	12	\$ 31,200.00
10.	Lateral's	56	EA	\$ 850.00	\$ 47,600.00	56	\$ 47,600.00
11.	1/4-lve	3	EA	\$ 1,315.00	\$ 3,945.00	3	\$ 3,945.00
	Sub-Total Sanitary Sewer				\$ 163,175.00		\$ 163,175.00
STORM SEWER							
12.	15" RCP	260	LF	\$ 26.50	\$ 6,890.00	0	\$ 0.00
13.	18" RCP	1,225	LF	\$ 26.00	\$ 31,850.00	0	\$ 0.00
14.	24" RCP	577	LF	\$ 32.00	\$ 18,464.00	0	\$ 0.00
15.	30" RCP	250	LF	\$ 36.00	\$ 9,000.00	0	\$ 0.00
16.	36" RCP	232	LF	\$ 46.00	\$ 10,672.00	0	\$ 0.00
17.	42" RCP	228	LF	\$ 72.00	\$ 16,296.00	0	\$ 0.00
18.	18" PEP	1,145	LF	\$ 27.00	\$ 30,915.00	0	\$ 0.00
19.	Inlets Type C	29	EA	\$ 2,600.00	\$ 75,400.00	0	\$ 0.00
20.	Inlets Type M	6	EA	\$ 2,600.00	\$ 15,600.00	0	\$ 0.00
21.	M/I Structures	5	EA	\$ 2,650.00	\$ 13,250.00	0	\$ 0.00
22.	EP's	1	EA	\$ 1,800.00	\$ 1,800.00	0	\$ 0.00
	Sub-Total Interior Storm Sewer				\$ 235,716.00		\$ 0.00
PARKS							
21.	Five Grade	8,310	SY	\$ 1.15	\$ 9,546.50	0	\$ 0.00
22.	Base	9,110	SY	\$ 11.25	\$ 102,487.50	0	\$ 0.00
23.	Binder	9,110	SY	\$ 8.15	\$ 74,246.50	0	\$ 0.00
24.	Wearing	9,110	SY	\$ 5.10	\$ 46,461.00	0	\$ 0.00
	Sub-Total Paving				\$ 218,481.50		\$ 0.00
MISCELLANEOUS							
25.	Concrete Curbing	5,475	LF	\$ 14.00	\$ 76,650.00	0	\$ 0.00
26.	Pedestrian Bldgs	1	LS	\$ 100,000.00	\$ 100,000.00	0	\$ 0.00
27.	Site Lighting Standards	19	EA	\$ 3,150.00	\$ 59,850.00	0	\$ 0.00
28.	Monuments	6	EA	\$ 300.00	\$ 1,800.00	0	\$ 0.00
	Sub-Total Internal Roadway				\$ 238,300.00		\$ 0.00
LANDSCAPE							
29.	Street Trees	109	EA	\$ 485.00	\$ 52,855.00	0	\$ 0.00
30.	Buffer Plantings - Trees	264.00	EA	\$ 330.00	\$ 87,140.00	0	\$ 0.00
31.	Buffer Plantings - Shrubs	718.00	EA	\$ 45.00	\$ 32,310.00	0	\$ 0.00
	Sub-Total Planting				\$ 172,305.00		\$ 0.00
SUBTOTAL							
					\$ 1,104,308.00	\$ 163,175.00	
					\$ 51,215.40	\$ 15%	
					\$ 1,156,523.40	\$ 24,566.25	
					\$ 113,652.34	\$ 10% Additional Security	
					\$ 1,270,175.74	\$ 24,566.25	
TOTAL MAINTENANCE SECURITY							

PREPARED BY & RETURN TO:

Riley Riper Hollin & Colagreco
Attn.: Alyson M. Zarro, Esquire
717 Constitution Drive, Suite 201
P.O. Box 1265
Exton, PA 19341
(610) 458-4400

UPI No. 53-4-719

**RIGHT -OF- WAY AGREEMENT
AND DEDICATION OF SEWAGE FACILITIES**

THIS AGREEMENT, made this _____ day of _____, 2013, between **EAST GOSHEN MUNICIPAL AUTHORITY** ("Authority"), a body corporate and politic organized and existing under and by virtue of the laws of the Commonwealth of Pennsylvania, in East Goshen Township, Chester County, Pennsylvania, and **PULTE HOMES OF PA, LIMITED PARTNERSHIP**, a Michigan limited partnership with an address of 222 Mt. Airy Road, Suite 210, Basking Ridge, New Jersey 07920 ("Owner").

WITNESSETH:

WHEREAS, the Owner owns a tract or land situate at the north side of East Boot Road in East Goshen Township, Chester County, Pennsylvania, as acquired by deed dated August 19, 2005 and recorded in Deed Book 6592, page 1284, in the office of the Recorder of Deeds of Chester County, Pennsylvania; and

WHEREAS, the Owner has constructed an extension to the Authority sewer system to serve its tract and to facilitate the future connection of other lands in the Authority to the public sewer system; and

WHEREAS, the Owner intends hereby to transfer title to the sewage facilities it has constructed on its tract to the Authority and to create the necessary sanitary sewer easements on its tract for the use and benefit of the Authority.

NOW, THEREFORE, in consideration of the mutual covenants hereinafter contained, and other good and valuable consideration, receipt of which is hereby acknowledged by the Owner, the Authority and the Owner, each intending to be legally bound hereby, do agree as follows:

1. Definitions. The term "sewer lines" when used in this instrument shall refer to a sanitary sewer pipe, conduit, manhole, drain, marker, service connection and other appurtenances to be constructed by the Owner, meeting the specifications of the consulting engineers of the Authority, as approved by the Authority for use in the aforesaid sewer system within the sanitary sewer easement on Owner's property, as shown on an Easement Plan prepared by Carroll Engineering, Inc. dated March 1, 2013, marked Exhibit "A," attached hereto and made a part hereof.
2. Grant to Authority. The Owner hereby gives and grants to the Authority the free and uninterrupted right, liberty and privilege:
 - a. To install, construct, reconstruct, replace, remove, enlarge, inspect, operate, repair, make connections with and maintain perpetually such sewer lines, their accessories and appurtenances, as the Authority may from time to time require, consisting of underground pipes, conduits, manholes, drains, markers, mains, service connections and other appurtenances upon, over and under a strip of land twenty (20) feet wide, more or less, across the aforesaid tract of land belonging to Owner as shown on Exhibit "A", and as more particularly described by metes and bounds on Exhibit "B"; provided, however, that such Grant shall not include the right, liberty or privilege to install, construct or place any structure above the surface of the land of Owner.
 - b. To carry away and dispose of sewage through said sewer lines regardless of the source of such sewage.
 - c. The Owner hereby grants, dedicates, sells, transfers, assigns and delivers to the Authority the sewer lines located within the sanitary sewer easement on Owner's tract as shown on Exhibit "A" and as further described in Exhibit "B" attached hereto and made a part hereof.
 - d. The Owner agrees also to provide financial security to secure the structural integrity of the sewer lines hereby dedicated to the Authority and the functioning thereof in accordance with their design and specifications for a term not to exceed eighteen (18) months from the date of the Authority's execution of this Agreement and in an amount equal to fifteen percent (15%) of the actual cost of the installation of such improvements. The Owner shall be liable for the full cost of repair or replacement of defects and damages caused by the lack of structural integrity of the sewer lines caused by improper installation or failure of the sewer lines to function in accordance with the design and specification therefor, where such defects appear within eighteen (18) months from the date of such dedication. Owner shall execute a maintenance security agreement in the form required by the Authority to secure its obligations hereunder.
3. To have and to hold the same perpetually to the Authority and its successors or assigns, together with the right and privilege at any and all times to enter the said premises, or any part thereof, provided that the Authority gives to the Owner reasonable advance

notification of the nature of any intended work on the premises and the expected duration of such work, for the purpose of installing, constructing, reconstructing, replacing, removing, enlarging, inspecting, operating, repairing, maintaining, and/or making connections with the sewer lines or other appropriate means of access to the sewer lines; all upon the condition that the Authority will at all times during the construction, reconstruction, replacement, removal, repair or maintenance of the sewer lines cause every reasonable means to be used to protect from injury or damage all property, including lawns, trees, shrubbery, fences, buildings, walls, roads, water courses, natural features, or any existing improvement thereto, and the business activities of any business serviced by the sewer lines located on Owner's tract of land, and will at all times after doing any work in connection with the construction, reconstruction, replacement, removal, repair or maintenance of the sewer lines, cause the said premises to be restored to the condition in which the same were found before such work was undertaken, including replacement and/or repair of damaged property, to the extent reasonably possible under the circumstances and consistent with the rights and privileges herein granted.

4. Covenants of the Owner.

- a. The Owner does hereby release, remise, quitclaim and discharge the Authority, the Township and their several agents, servants, contractors and employees from any claim or right to damages or other emolument of value for the rights, liberties and privileges and the sewer lines given and granted to the Authority under this Indenture. This release is not intended to foreclose Owner's right to assert and collect damages from the Authority for any breach by the Authority of its obligations hereunder which may occur after the date of this Indenture.
- b. The Owner does hereby covenant that it is lawfully seized and possessed of a good and marketable title in fee simple to the aforesaid tract of land and that it has a good and lawful right to grant the rights and privileges herein granted to the Authority, and it further covenants that it will execute or procure any additional necessary assurances of the rights and privileges herein granted.
- c. The Owner does hereby expressly consent to any transfer, conveyance, pledge, lease or mortgage by the Authority of the said sewer lines.
- d. The Owner does hereby covenant that no structure or other obstruction shall be erected or permitted on the aforesaid strip of land.
- e. The provisions of this Indenture shall be binding upon and inure to the benefit of the Authority, its successors and assigns, and the Owner, its successors and assigns.

4. Covenants of Authority. Any liability for personal injury or to any worker employed by the Authority or its agents for construction, maintenance or repair purposes pursuant to this Agreement or to third persons, as well as any liability for damage to the property

COMMONWEALTH OF PENNSYLVANIA:
COUNTY OF CHESTER : SS.

ON THIS _____ day of _____, 2013, before me, a notary public, duly commissioned in and for said County and Commonwealth, personally appeared _____, who acknowledged himself to be the Chairman of **EAST GOSHEN MUNICIPAL AUTHORITY**, and that he, as such, being authorized to do so, executed the foregoing instrument for the purposes therein contained.

STATE OF NEW JERSEY :
COUNTY OF SOMERSET : SS.

ON THIS _____ day of _____, 2013, before me, a notary public, duly commissioned in and for said County and Commonwealth, personally appeared _____ who acknowledged himself to be the _____ of **PH 50 LLC**, a Michigan limited liability company, general partner of **PULTE HOMES OF PA, LIMITED PARTERSHIP**, a Michigan limited partnership, and that he, as such, being authorized to do so, executed the foregoing instrument for the purposes therein contained.

GENERAL NOTES

1. THIS PLAN IS THE PROPERTY OF CARROLL ENGINEERING CORPORATION.
2. THE CLIENT HAS REPRESENTED TO THE ENGINEER THAT ALL INFORMATION AND DATA FURNISHED TO THE ENGINEER IS TRUE AND CORRECT.
3. THE ENGINEER HAS CONDUCTED VISUAL GENERAL VERIFICATION OF THE INFORMATION AND DATA FURNISHED TO THE ENGINEER.
4. THE ENGINEER HAS CONDUCTED VISUAL GENERAL VERIFICATION OF THE INFORMATION AND DATA FURNISHED TO THE ENGINEER.
5. THE ENGINEER HAS CONDUCTED VISUAL GENERAL VERIFICATION OF THE INFORMATION AND DATA FURNISHED TO THE ENGINEER.
6. THE ENGINEER HAS CONDUCTED VISUAL GENERAL VERIFICATION OF THE INFORMATION AND DATA FURNISHED TO THE ENGINEER.
7. THE ENGINEER HAS CONDUCTED VISUAL GENERAL VERIFICATION OF THE INFORMATION AND DATA FURNISHED TO THE ENGINEER.
8. THE ENGINEER HAS CONDUCTED VISUAL GENERAL VERIFICATION OF THE INFORMATION AND DATA FURNISHED TO THE ENGINEER.
9. THE ENGINEER HAS CONDUCTED VISUAL GENERAL VERIFICATION OF THE INFORMATION AND DATA FURNISHED TO THE ENGINEER.
10. THE ENGINEER HAS CONDUCTED VISUAL GENERAL VERIFICATION OF THE INFORMATION AND DATA FURNISHED TO THE ENGINEER.



EASEMENT PLAN

PROPOSED 20' WIDE SANITARY SEWER EASEMENT OVER LANDS N/A OF LOT 2 OF THE APPLEBROOK SUBDIVISION & OF THE TOWNSHIP OF EAST GOSHEN (UPI 53-4-891)

EAST GOSHEN TOWNSHIP
CHESTER COUNTY, PENNSYLVANIA

PUITE HOMES OF P.A. L.P.
1100 NORTHBROOK DRIVE
TREVOSE, PENNSYLVANIA 19053

Carroll Engineering Corporation
1000 North 10th Street
P.O. Box 1000
Trevose, PA 19053
Tel: 484-871-1234
www.carrolleng.com

DATE BY	DESIGN NUMBER
DRAWN BY	FILE
CHECKED BY	CADD FILE
DATE	SHEET NO. OF TOTAL SHEETS
JOB NO.	DRAWING NUMBER
SCALE	1" = 30'

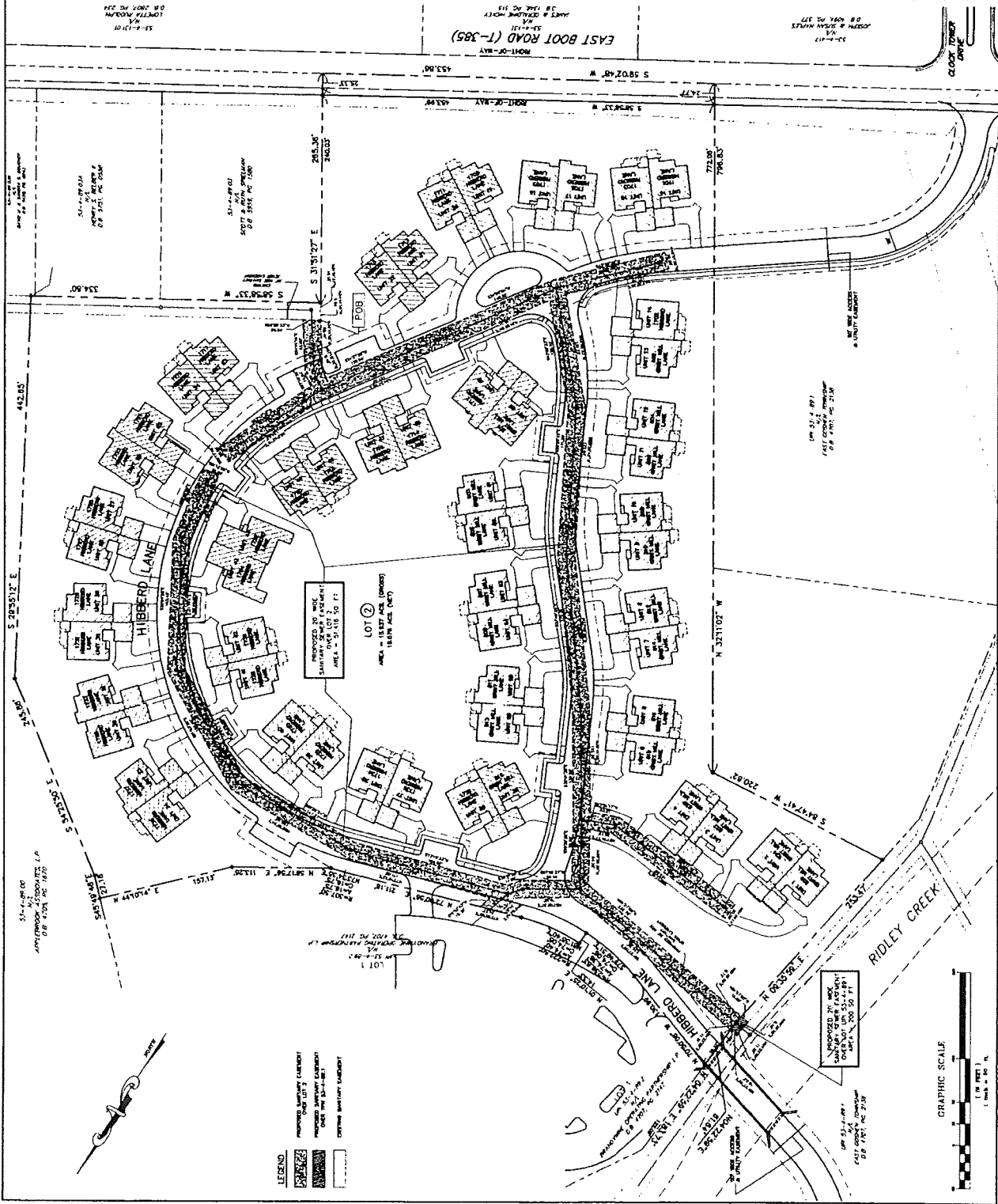


EXHIBIT "A"



Carroll Engineering Corporation

**DESCRIPTION OF A
PROPOSED 20' WIDE SANITARY SEWER EASEMENT
OVER LANDS N/L OF
LOT 2 OF THE APPLEBROOK SUBDIVISION
EAST GOSHEN TOWNSHIP, CHESTER COUNTY, PA**

March 1, 2013

ALL THAT CERTAIN tract of land situate in East Goshen Township, Chester County, Pennsylvania, said land being a Proposed 20' Wide Sanitary Sewer Easement over Lands N/L of Lot 2 of the Applebrook Subdivision in the Applebrook Subdivision, as shown on a plan prepared by Carroll Engineering Corporation titled "Easement Plan – Proposed 20' Wide Sanitary Sewer Easement Over Lands N/L of Lot 2 of the Applebrook Subdivision & of the Township of East Goshen (UPI 53-4-89.1)", dated March 1, 2013.

BEGINNING at a point in Lot 2 of the Applebrook Subdivision at a corner of an Existing 20' Wide Sanitary Sewer Easement. Said point being the following two courses from the northwesterly corner of Lands N/L of Scott & Ruth Spielman (UPI 53-4-89.03):

- Along the westerly line of said existing easement, North 31°51'27" West, 10.18';
- Thence, continuing along said line, North 34°41'16" West, 9.84' to the point of beginning of said Proposed Easement:

Thence through Lot 2 of the Applebrook Subdivision the following courses

1. North 34°41'16" West, 58.41';
2. North 57°18'22" West, 9.42';
3. South 34°37'25" West, 138.64';
4. South 34°06'04" West, 148.82';
5. South 43°38'35" West, 131.81';
6. North 46°21'25" West, 20.00';
7. North 43°38'35" East, 121.70';
8. North 42°02'23" West, 131.22';
9. North 28°20'42" West, 172.04';
10. North 37°48'20" West, 175.55';
11. North 32°41'35" West, 122.35';
12. South 67°51'17" West, 33.21';
13. North 85°11'46" West, 168.37';
14. North 04°48'14" East, 20.00';
15. South 85°11'46" East, 163.58';
16. North 67°51'17" East, 25.12';
17. North 30°39'35" West, 64.35';
18. North 81°27'00" West, 232.75' to a point along the line of Lands N/L of the Township of East Goshen (UPI 53-4-89.1);
19. Thence, along said line, North 09°35'59" East, 8.73' to a point;
20. Thence, continuing along said line, North 04°22'59" East 11.31' to a point;

Today's Commitment to Tomorrow's Challenges

Corporate Office:
949 Easton Road
Warrington, PA 18976
215.343.5700

630 Freedom Business Center
Third Floor
King of Prussia, PA 19406
610.489.5100

101 Lindenwood Drive
Suite 225
Malvern, PA 19355
3075

105 Raider Boulevard
Suite 206
Hillsborough, NJ 08844
908.874.7500

Thence, re-entering Lot 2 of the Applebrook Subdivision the following courses:

21. South 81°27'00" East, 234.38';
22. North 57°09'37" East, 70.26';
23. North 16°52'43" East, 24.87' to a point along the line of Lands N/L of Brandywine Operating Partnership L.P. (Lot 1 of UPI 53-4-89.2);
24. Thence, along said line, North 72°00'56" East, 24.37' to a point;

Thence, re-entering Lot 2 of the Applebrook Subdivision the following courses:

25. South 16°52'43" West, 15.33';
26. North 73°19'33" East, 171.05';
27. North 88°26'24" East, 155.48';
28. South 61°03'26" East, 154.40';
29. South 30°04'55" East, 153.42';
30. South 08°48'00" East, 89.77';
31. South 81°12'00" West, 20.00';
32. North 08°48'00" West, 86.02';
33. North 30°04'55" West, 144.12';
34. North 61°03'26" West, 143.41';
35. South 88°26'24" West, 147.37';
36. South 73°19'33" West, 184.02';
37. South 39°51'29" West, 17.00';
38. South 57°09'37" West, 58.44';
39. South 30°39'35" East, 70.90';
40. South 32°41'35" East, 129.59';
41. South 37°48'20" East, 176.31';
42. South 28°20'42" East, 171.29';
43. South 42°02'23" East, 125.32';
44. North 34°06'04" East, 135.31';
45. North 34°37'25" East, 147.44';
46. North 23°42'15" East, 134.63';
47. South 66°17'45" East, 20.00';
48. South 23°42'15" West, 127.04';
49. South 57°18'22" East, 14.54';
50. South 34°41'16" East, 63.69' to the northerly line of the aforementioned existing 20' wide sanitary sewer easement;
51. Thence, along said easement line, South 58°58'33" West, 20.04' to the first mentioned point and place of **BEGINNING.**

Containing 51,416 square feet of land, more or less. Said area represents a Proposed 20' Wide Sanitary Sewer Easement over Lot 2 of the Applebrook Subdivision.

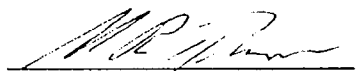

Stephen R. Murphy P.L.S.
PA License #SU056907

EXHIBIT "B"



EAST GOSHEN MUNICIPAL AUTHORITY
EAST GOSHEN TOWNSHIP
1580 PAOLI PIKE, WEST CHESTER, PA 19380-6199

April 3, 2013

To: Municipal Authority
From: Mark Miller
Re: March 2013 Monthly Report

Meters: Meters were calibrated on April 8, 2013. Minor adjustments were made to Wilson Drive. The portable flow meters were pulled and will be re-installed this week. We will be monitoring the sewer flows between Rt. 3 and Paoli Pike.

Pump Stations: Were visited on a daily basis

C.C. Collection: On March 17th we received an alarm at the Hershey Mill Pump Station for a pump failure. While I was enroute I received a high level alarm. We found that all the pumps had tripped as well as the VFD's, we reset the breakers to get the pumps to run. It turns out that the block heater on the generator shorted out which tripped the circuit breakers.

R.C. Collection: Joann received a call from a resident at 202 Applebrook Drive who reported sewage coming thru his basement toilet. We arrived at 202 Applebrook Drive and started to pull manholes. We found manholes plugged with grease, as we worked to clear the clog we found that two drop manholes were completely clogged and had to use shovels and pry bars to release the grease. The crew was able to get the line opened to alleviate the backup. I explained to the homeowner that the lines were not part of the Township system. I contacted the management company to advise them that they had a serious problem that needed immediate attention. (Photos Attached)

We checked the other manholes to make sure they were clear before we left and we also worked our way back to the clubhouse where we found the main line with a 75% blockage. Applebrook called Pipe Data View in to clear their lines. The management company is having all the lines cleared. We met with the Apple Brook Golf Course

R.C. Plant: Nothing to report at this time.

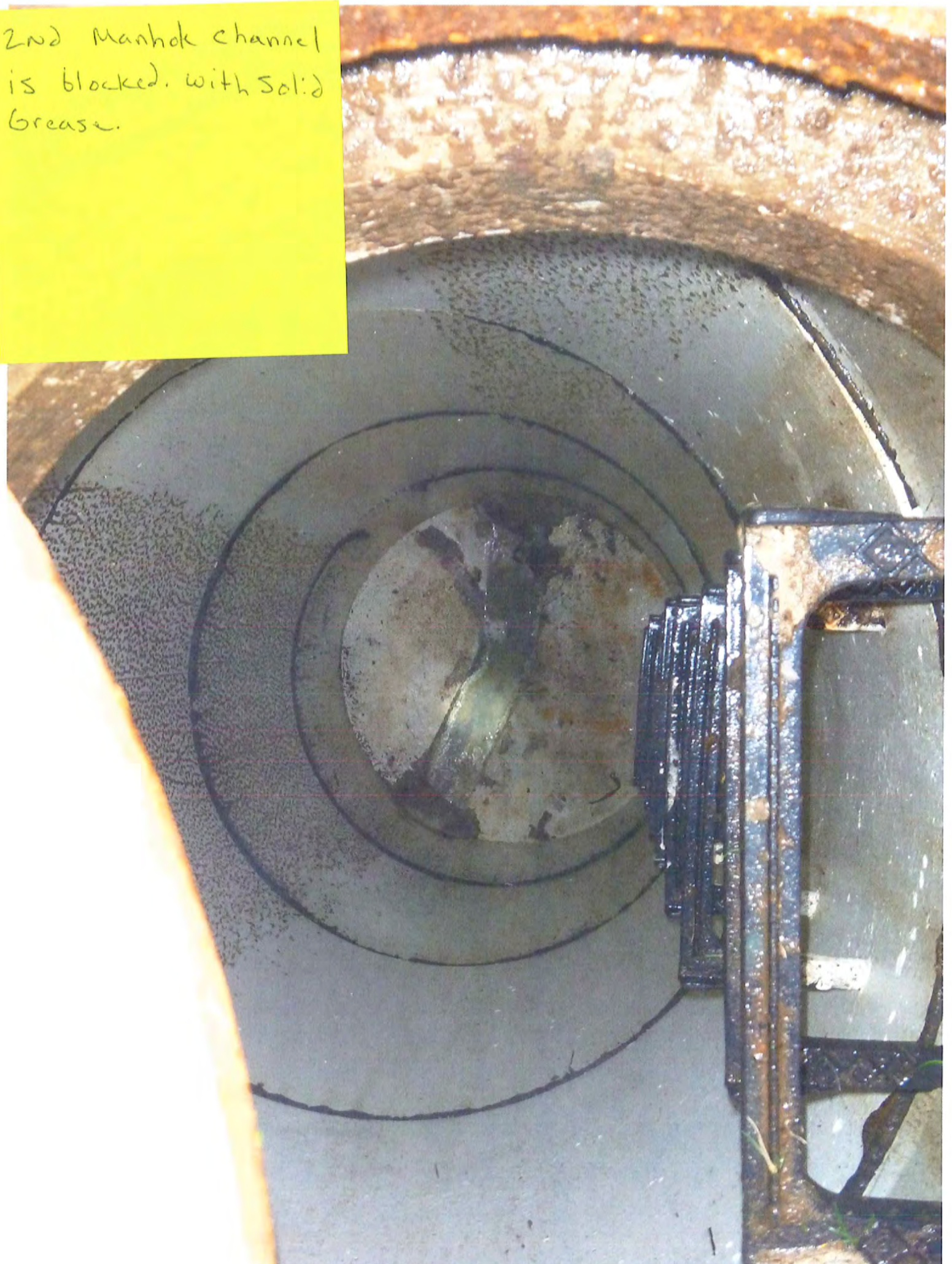
Alarms: We received a total of 17 alarms.

PA One Calls: We received 47 PA One calls for the month of March.

This is a drop
manhole that is
clogged.
channel is blocked



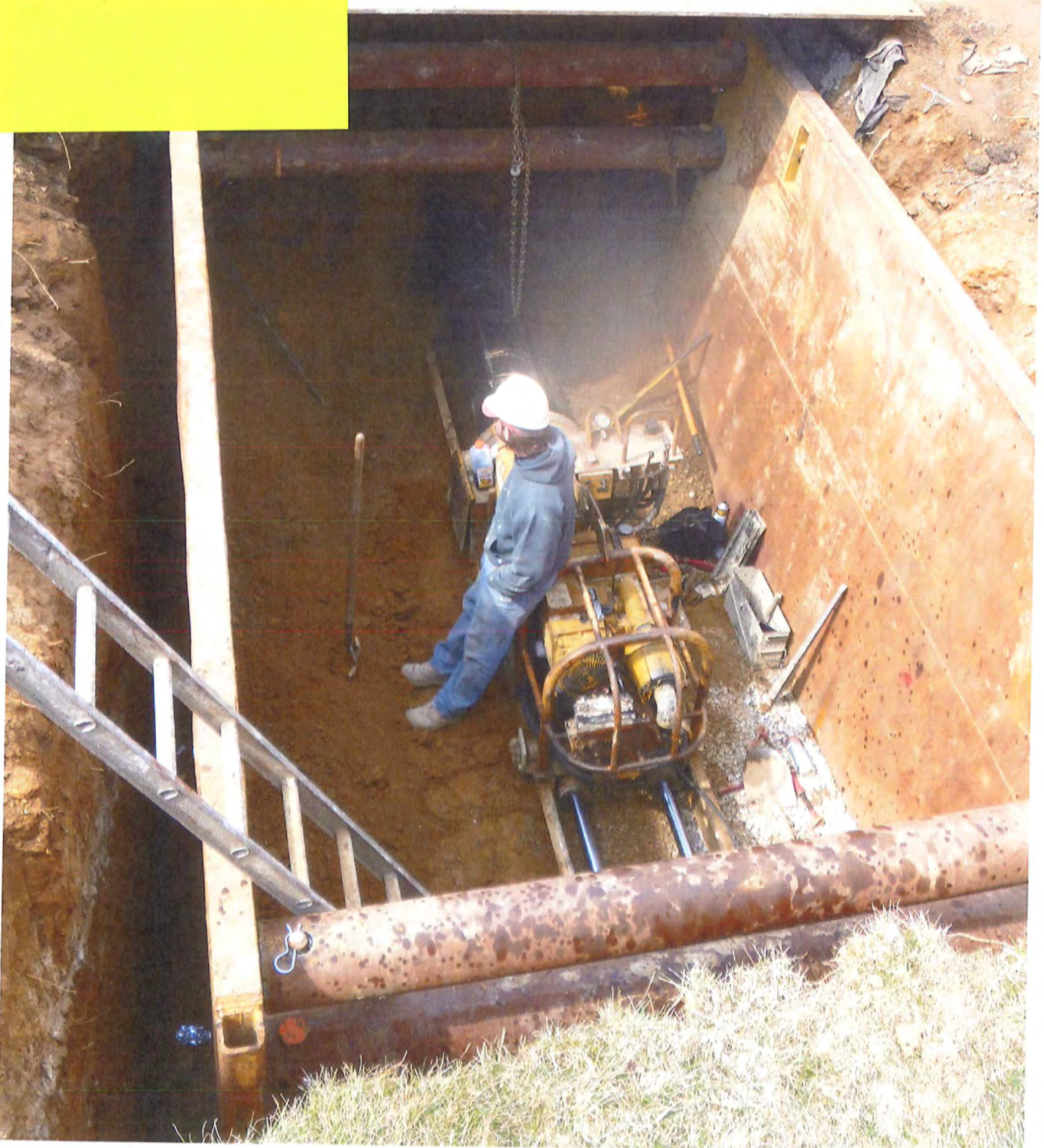
2nd Manhole channel
is blocked with solid
grease.



Two Strainer to
catch grease.



Contractor
Jack and bore under
Pauli Pike
MaryDell Sewer



Casing + Manhole
on Saratoga Dr.



Auger + casing
comes out on the
other side

Mary Dell -
Sewer





MEMORANDUM

TO: East Goshen Municipal Authority Board
Rick Smith, Township Manager

FROM: Michael Ellis, P.E. for Daniel Barbato, P.E.
Authority Engineer

DATE: April 4, 2013

SUBJECT: Engineer's Report

Invoices

- Invoices with summaries are provided under separate cover.

Ridley Creek Sewage Treatment Plant (RCSTP)

- Pennoni continues to coordinate with the Plant Operator and will provide operations assistance as needed. No issues were brought to our attention in March.

Marydell PS Elimination

- We coordinated with Ply-Mar to have their insurance coverages revised to comply with contract requirements, and an acceptable insurance certificate was provided. We also reviewed additional shop drawing submissions.
- Notice to Proceed with Construction was issued effective March 18. The contract completion date is July 15.
- Ply-Mar began construction on March 26. Ply-Mar originally estimated 6-8 weeks to complete the project. We have performed construction field observation and office support during the construction including but not limited to field meetings and coordination with PECO to brace utility poles, coordination with Sunoco for required soft dig test pits of gas mains in Boot Road, observation of Paoli Pike jack and boring, and resolution of Paoli Pike jack and boring casing misalignment.
- We reviewed the contractor's first payment request and forwarded our recommendation to the Township.

Hershey's Mill PS Diversion

- We issued Notice to Proceed with Construction effective April 1, 2013. The contract completion date is July 29, 2013. The contractor, Delaware Valley Utility Contractors, proposes to begin work on May 6. They estimate approximately one month to complete the project. A pre-construction meeting is tentatively scheduled for April 16 or 17.

- We are also in the process of reviewing partial shop drawings from the contractor.

Reserve PS Elimination

- We completed the Bid Plans and near-final specifications. The plans and specifications were submitted to the Reserve at Spring Meadows HOA per their request. The project will be put out to bid after the Reserve at Spring Meadows HOA has granted the easement and rock borings are performed.

Chapter 94 Annual Reports

- We prepared and submitted the reports for the Ridley Creek, West Goshen, and Westtown Service Areas to DEP. We also prepared and submitted a letter to DEP stating that the Lockwood Chase STP was decommissioned in 2012 and that a Chapter 94 Report for that Plant is therefore not necessary.

Semi-Annual I/I Report

- We analyzed permanent and portable (temporary) meter data from the preceding six months, and we met with Township staff to review the metering and discuss locations for metering and investigations over the next six months. We prepared the semi-annual report and submitted it to the Township.

Applebrook Sewer Easements

- We reviewed the easement plan and legal description, and we provided minor comments to the Township.



Monthly Operations Report: March 2013

Treatment Process Operation

During February 2013, there were no exceedances of the final effluent discharge limitations for outfall 001. There was no discharge from outfall 002. Table 1 illustrates the final effluent composite sample data reported during February.

Table 1

February 2013 - Final Effluent - Out Fall 001

NPDES Permit Discharge Limitations	Flow	CBOD ₅		TSS		NH ₄ -N		Phosphorus, Total, mg/L		Fecal Coliform	
	MGD Average	mg/L	lbs/ month	mg/L	lbs/ month	mg/L	lbs/ month	mg/L	lbs/ month	Geo Mean	Geo Mean
	0.75	20	125	21	131	7	44	0.5	3	200	1,000
	Instantaneous Maximum	40		42							
Sample Date											
March 5, 2013	0.271	2.0	4.5	5	11	0.10	0.23	0.14	0.32	1	0.0000
March 14, 2013	0.239	2.0	4.0	5	10	0.19	0.38	0.26	0.52	1	0.0000
March 19, 2013	0.235	2.0	3.9	5	10	0.26	0.51	0.19	0.37	1	0.0000
March 26, 2013	0.228	2.0	3.8	5	10	0.10	0.19	0.21	0.40	1	0.0000
Average	0.2433	2.0	4	5	10	0.162	0.33	0.20	0.40	1	0.0000
Minimum	0.2280	2.0	4	5	10	0.100	0.19	0.14	0.32	1	0.0000
Maximum	0.2710	2.0	5	5	11	0.258	0.51	0.26	0.52	1	0.0000

The monthly average total phosphorus concentration was 0.20 mg/L as compared to the discharge limitation of 0.5 mg/L. During the month, the final effluent total phosphorus concentration discharged ranged from 0.14 mg/L to 0.26 mg/L.

Table 2 present the influent wastewater pollutant concentrations and loading entering the wastewater treatment facility. Composite samples are collected at the influent doghouse manhole. The influent flow meter reading is collected from the SBR influent flow meter due to inaccuracies with the field influent flow meter.



Table 2

February 2013 - Influent Wastewater

Design Basis	Flow	BOD ₅		TSS		NH ₄ -N		TKN, mg/L		Phosphorus, Total, mg/L	
		mg/L	lbs/day	mg/L	lbs/day	mg/L	lbs/day	mg/L	lbs/day	mg/L	lbs/day
	MGD Average	335	2,098	320	2,001	32	200	48	301	9.1	57
Sample Date											
March 5, 2013	0.3833	168	537	72	230	29.5	94	40	128	4.8	15
March 14, 2013	0.3080	138	354	64	164	30.7	79	84.6	217	4.4	11
March 19, 2013	0.3369	85.2	239	980	2,754	45.7	128	79.5	223	35.6	100
March 26, 2013	0.3215	304	815	230	617	33.9	91	48.8	131	6.3	17
Average	0.3374	174	487	337	941	35	98	63	175	13	36
Minimum	0.3080	85	239	64	164	30	79	40	128	4	11
Maximum	0.3833	304	815	980	2754	46	128	85	223	36	100

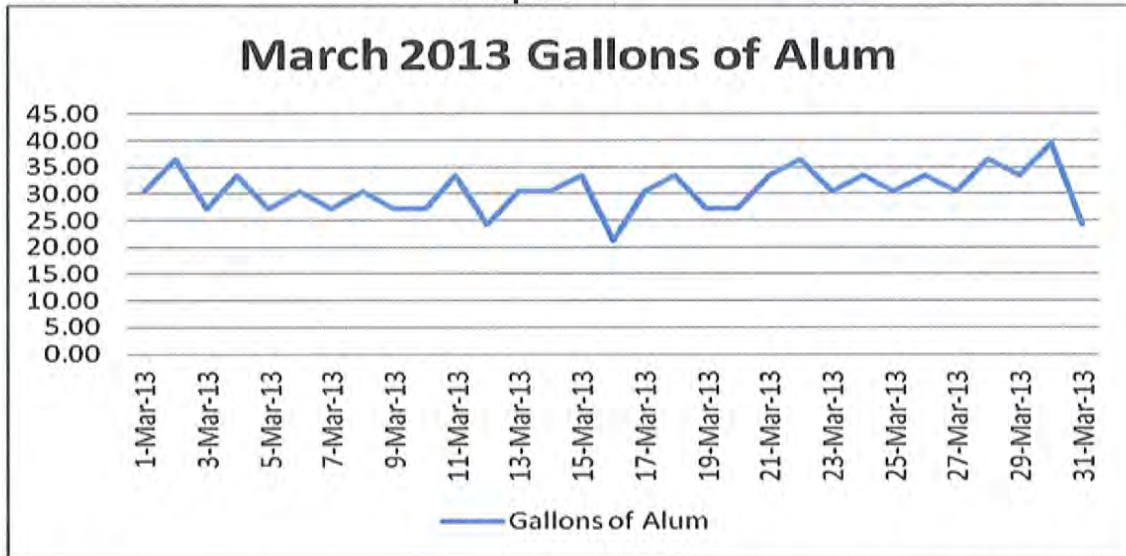
Sequencing batch reactors (SBRs) numbered 1, 3 and 4 were in service during the month of March. Process monitoring of each SBR included ammonia as N, nitrite as N, Nitrate as N, COD, SSV, MLSS and total phosphorus. Microscopic examinations and physical observation of the SBR MLSS and foam color is ongoing. Foam concentrations increased in concentration of surface area coverage during the month. The foam remains as light brown in color and averages 3 to 4 inches in depth. The F:M ratios for SBR 3 and 4 decreased slightly. Increased sludge wasting rates were gradually implemented during the last week of the month and will continue during April to increase the F:M ratio and lower the MLSS.

Daily monitoring of the influent and final effluent 24-hour composites samples for total phosphorus is ongoing. Daily analysis of the final effluent flow equalization grab sample is total phosphorus is ongoing.

Addition of aluminum sulfate solution to the SBRs to assist with phosphorus removal continued. The volume of aluminum sulfate solution to the SBRs was largely consistent through March. Graph 1 illustrates the daily volume of alum used during the month.



Graph 1



SBR No. 2 remains out of service. Transfer of the remaining mixed liquor will be implemented during the month of April to drain the tank.

Table 3 presents the March 2013 final effluent data used for DMR preparation.

Table 3											
March 2013 - Final Effluent - Out Fall 001											
NPDES Permit Discharge Limitations	Flow	CBOD ₅		TSS		NH ₄ -N		Phosphorus, Total, mg/L		Fecal Coliform	
	MGD Average	mg/L	lbs/month	mg/L	lbs/month	mg/L	lbs/month	mg/L	lbs/month	Geo Mean	Geo Mean
	0.75	20	125	21	131	7	44	0.5	3	200	1,000
	Instantaneous Maximum	40		42							
Sample Date											
March 5, 2013	0.288	2.0	4.8	5	12	0.10	0.24	0.16	0.38	1	0.0000
March 14, 2013	0.273	2.0	4.6	5	11	0.13	0.29	0.37	0.84	1	0.0000
March 19, 2013	0.283	2.0	4.7	5	12	0.10	0.24	0.29	0.68	1	0.0000
March 26, 2013	0.263							0.32	0.70	1	0.0000
Average	0.2768	2.0	5	5	12	0.109	0.26	0.29	0.65	1	0.0000
Minimum	0.2630	2.0	5	5	11	0.100	0.24	0.16	0.38	1	0.0000
Maximum	0.2880	2.0	5	5	12	0.127	0.29	0.37	0.84	1	0.0000



The facility is anticipated to achieve compliance with the permitted effluent limitations.

Process Monitoring On-Line Instrumentation:

The ChemScan phosphate analyzer remains on line. Comparison testing for reactive (ortho) and total phosphorus is ongoing. On site comparison, monitoring is measuring a significant difference among the analyzer data as compared to the onsite laboratory data. Dave Kershner was contacted confirm calibration of the analyzer and adjust if needed. Suspended solids within the post final effluent feed to the flow floc tank and filters may be fouling the analyzer.

Presented below is a summary of the flow data for March 2013:

Flow data:

March 2013		
Flow Meter Location	Total Volume for Month, MGD	Average Daily Flow, gpd
Influent Wastewater to Screening Building – <i>Meter is inaccurate</i>	14.571	470,047
Influent Wastewater to SBRs	10.636	343,102
Internal Recycle	NA	NA
Treated Effluent to Disc Filters	10.309	322,559
Final Effluent Discharge	7.547	243,452
Applebrook Golf Course	0	0

Chemical Usage:

March 2013		
Chemical	Daily Average	Total Monthly
Soda Ash	203 lbs./day	6,300 pounds
Magnesium Hydroxide	0 gpd	0 gallons
Polyaluminum chloride solution	0 gpd	0 gallons
Polymer (centrifuge)	4.5*	41 gallons

**Nine (9) days of centrifuge operation*



Solids Dewatering and Disposal: March 2013

During the month, the centrifuge dewatering system was placed in service. Presented below is a summary of the solids processing activity:

Sludge Dewatering Summary	
Gallons of sludge dewatered	176,271 gallons
Average Dewatered Total Solids, %	18%* (<i>estimated on-site data</i>)
Wet Tons	<i>Data not available at time of report preparation</i>
Dry Tons	<i>Data not available at time of report preparation</i>
Number of dumpsters	3

During the month, sludge wasting to the sludge holding tanks and decanting of the sludge holding tanks was ongoing. Process monitoring included pH, total alkalinity and total solids.

Sludge holding tank No. 1 was in service. The level at the beginning of the month was 12.99 feet and the level at the end of the month was 14.14 feet. The initial total solids concentration was 0.77% and ended the month as 0.81% total solids. A total of 141,225 gallons of supernatant was decanted during the month.

Sludge holding tank No. 2 was out of service. The level at the beginning of the month was 2.57 feet and the level at the end of the month was 1.60 feet. This sludge tank is planned to be utilized during the month of April to drain SBR 2 and assist to handle the increase sludge wasting rates.

Significant Storm Events

During March there were no significant rainfall events contributing to excessive influent wastewater flows to the treatment facility.

Minor Repairs and Preventative Maintenance

- ACS was contacted to schedule repair of the influent flow chart recorder.
- ACS installed flow meter signal cable connecting the new influent "field" flow meter to the influent sampler located at the doghouse manhole. The influent sample collection is a flow-proportioned sample.



- Jeff Bush from Worth & Company was contacted to replace the failed analog hour meters (previous warranty issue left unresolved by Worth & Company).
- The spider gear for the centrifuge polymer feed system failed. The gear from the disc filter polymer feed system was used to return the centrifuge to service. Replacement parts will be ordered.
- The rear bearing of the centrifuge continues to be closely monitored as the temperature has been observed to increase to 180°F. A temperature of 212°F activates a high temperature alarm and results in the machine failure.
- Disc Filter Number 2 cloth media was cleaned. There have been no high vacuum alarms observed since completing the cleaning procedure.
- The Township coordinated with Aqua Wastewater Management to remove grit from the influent flow channel.

2013 SUMMARY OF METER READINGS

	WESTTOWN WAY	ELLIS LANE	PAOLI PIKE	WILSON DRIVE	SUMMIT	HERSHEY MILL	ASHBRIDGE	HICKS	RESERVOIR	SHERMAN	BARKWAY
JANUARY	1,277,069	120,481	60,165	63,671	20,400	89,992	70,106		922,377	7,363	11,147
FEBRUARY	1,297,700	101,955	56,216	77,811	20,400	89,500	64,950	387,898	936,368	7,669	10,544
MARCH	1,285,156	105,488	68,636	85,607	20,400	79,416	66,580	292,895	594,040	3,899	7,122
APRIL											
MAY											
JUNE											
JULY											
AUGUST											
SEPTEMBER											
OCTOBER											
NOVEMBER											
DECEMBER											
Total Flows											
Monthly Ave	1,286,642	109,308	61,672	75,696	20,400	86,303	67,212	340,397	817,595	6,310	9,604

To
West Goshen 1,039,965

2013 SUMMARY OF METER READINGS

	WESTTOWN WAY	ELLIS LANE	PAOLI PIKE	WILSON DRIVE	SUMMIT
JANUARY	1,277,069	120,481	60,165	63,671	20,400
FEBRUARY	1,297,700	101,955	56,216	77,811	20,400
MARCH	1,285,156	105,488	68,636	85,607	20,400
APRIL					
MAY					
JUNE					
JULY					
AUGUST					
SEPTEMBER					
OCTOBER					
NOVEMBER					
DECEMBER					
Total Flows					
Monthly Ave	1,286,642	109,308	61,672	75,696	20,400

2013 SUMMARY OF METER READINGS

	WESTTOWN WAY	ELLIS LANE	PAOLI PIKE	WILSON DRIVE	SUMMIT
JANUARY	1,277,069	120,481	60,165	63,671	20,400
FEBRUARY	1,297,700	101,955	56,216	77,811	20,400
MARCH	1,285,156	105,488	68,636	85,607	20,400
APRIL					
MAY					
JUNE					
JULY					
AUGUST					
SEPTEMBER					
OCTOBER					
NOVEMBER					
DECEMBER					
Total Flows					
Monthly Ave	1,286,642	109,308	61,672	75,696	20,400