

EAST GOSHEN MUNICIPAL AUTHORITY

**June 10, 2013
Monday 7:00 PM**

1. CALL TO ORDER/PLEDGE OF ALLEGIANCE/MOMENT OF SILENCE
 - a. Ask if anyone will be taping the meeting?

2. CHAIRMAN’S REPORT/OTHER MEMBERS REPORTS

3. APPROVAL OF MINUTES
 - a. May 13, 2013

4. APPROVAL OF INVOICES

a. Pennoni #548281		\$ 427.50
b. Pennoni #548282		\$ 393.75
c. Pennoni #548283		\$ 401.50
d. Pennoni #548284		\$ 4,429.25
e. Pennoni #548285		\$ 7,301.00
f. Earthcore #6478	Paid #2179	\$ 2,600.00
g. PA DOT	Paid	\$ 4,089.21
h. Plymar Invoice #3 – MaryDell PS Project		\$ 50,608.00

See Change Order #1 – This needs to be approved in conjunction with the invoice.

5. LIAISON REPORTS
6. FINANCIAL REPORTS
 - a. May 2013 Report

7. OLD BUSINESS
 - a. None

8. GOALS
 - a. May Goals

9. NEW BUSINESS
 - a. Proposal for Professional Services, Pennoni – Reserve Pump Station Sanitary Sewer Diversion Construction Phase Services
 - b. Comp Plan Goals

10. CAPACITY REQUESTS
 - a. None

11. SEWER REPORTS
 - a. Director of Public Works Report

- b. Pennoni Engineer's Report
- c. Big Fish Environmental Inc Report with DMR's
- d. East Goshen Township Flows for May 2013

12. ANY OTHER MATTER

13. CORRESPONDENCE AND REPORTS OF INTEREST

- a. Change of Company Name - Mallie

14. PUBLIC COMMENT

15. ADJOURNMENT

Reminder – NEWSLETTER ARTICLE SUBMISSION DUE DATES:

Article Due Date

Website Posting Date

draft
EAST GOSHEN TOWNSHIP MUNICIPAL AUTHORITY
MEETING MINUTES
May 13, 2013

The East Goshen Township Municipal Authority held their regularly scheduled meeting on Monday, May 13, 2013 at 7:00 pm at the East Goshen Township building. Members in attendance were: Chairman Fran Beck, Jack Yahraes, Dana Pizarro, and Ed McAssey. Also in attendance were: Rick Smith (Township Manager), Bob Adams, (Solicitor), Dan Barbato (Pennoni), Scott Towler (BFES), and Walter Wujcik (Conservancy Board).

COMMON ACRONYMS:

<i>BFES – Big Fish Environmental Services</i>	<i>MA- Municipal Authority</i>
<i>BOS – Board of Supervisors</i>	<i>NPDES – National Pollutant Discharge Elimination System</i>
<i>CB – Conservancy Board</i>	<i>PC – Planning Commission</i>
<i>DEP – Department of Environmental Protection</i>	<i>PR – Park & Recreation Board</i>
<i>EPA – Environmental protection Agency</i>	<i>RCSTP – Ridley Creek Sewer Treatment Plant</i>
<i>HC – Historical Commission</i>	<i>SBR – Sequencing Batch Reactor</i>
<i>I&I – Inflow & Infiltration</i>	<i>SSO – Sanitary System Overflow</i>
<i>LCSTP – Lochwood Chase Sewer Treatment Plant</i>	<i>WAS – Waste Activated Sludge</i>

Call to Order & Pledge of Allegiance

Fran called the meeting to order at 7:00 pm and led those present in the Pledge of Allegiance. There was a moment of silence to remember the troops. Fran asked if anyone would be recording the meeting and there was no response.

Chairman’s Report

1. Fran received the annual report from PLGIT and made it available for anyone to review.
2. Jack attended the West Goshen meeting. The judge put their case in suspense. There is a similar case in Iowa that will bring lots of changes.
3. Ed and Dana attended the PMAA meeting. Ed learned about PMAA and that stormwater is a big issue. Dana reported that there are several bills ready to deal with the mismanagement in Harrisburg, put a limit on the cost of easements, and fines if the flow is more than anticipated.
4. Jack has been checking on the work at Paoli Pk and Boot Rd and complimented Matt for the job his is doing.

Approval of Minutes

The Chairman noted that the minutes of the April 8, 2013 meeting were approved as corrected.

Approval of Invoices

1. Jack moved to approve payment of 8 Pennoni invoices:

#546001	\$1,126.50
#546002	\$ 127.75
#546003	\$ 47.50
#546004	\$ 472.50
#546005	\$2,387.75
#546006	\$5,355.00
#546007	\$ 976.50

1 #546008 \$7,040.25

2 Dana seconded the motion. Dana feels that there are 3-4 invoices that can be closed so the funds
3 can be used elsewhere. Rick will have a list for the next meeting. The motion passed
4 unanimously.

5 2. Jack moved to authorize payment of the Reserve at Spring Meadows HOA invoice for
6 \$1,455.00 and authorize execution of the easement agreement. Ed seconded the motion. The
7 motion passed unanimously.

8 3. Dana moved to approve payment of the Gawthrop Greenwood invoice #108506 for
9 \$3,364.00. Jack seconded the motion. The motion passed unanimously.

10 4. Jack moved to approve payment of the Plymar invoice – Marydell Diversion for \$79,704.00.
11 Dana seconded the motion. The motion passed unanimously.
12

13 Liaison Reports

14 1. Conservancy Board – Walter reported that the Board did some maintenance on the trees at
15 Supplee Valley and planted trees along the creek bank. They are waiting for a quote from the
16 company that sprays for invasives. This company has been taking care of the Blacksmith Shop
17 area and they want a quote for the Reservoir Road preserve.
18

19 Financial Reports

20 1. Jon Altshul, CFO, provided reports with the following comment: The Municipal
21 Authority recorded \$86,408.22 in expenses and \$110,008.80 in revenues (primarily from a
22 transfer from the Sewer Capital Reserve Fund) in the month of April, a difference of \$23,600.58.
23 The fund balance is now \$72,964.31. Rick mentioned that there is \$24,000 being held in
24 escrow that doesn't show on the report. Dana commented that several items on the detail report
25 weren't updated from last month.
26

27 Old Business

28 None
29

30 Goals

31 1. Newsletter – Dana will provide an article by June 1. Jack commented that since the paper
32 newsletter was discontinued, it is apparent that people aren't reading the electronic version; i.e.
33 the senior driving course was cancelled for the first time this year and there weren't as many
34 volunteers for Keep East Goshen Beautiful Day. He is not interested in writing an article any
35 more. Jack made a motion to send a letter to the Board of Supervisors asking them to consider
36 reinstating the paper newsletter. Fran seconded the motion. The motion passed unanimously.
37 Rick will write a draft letter.
38

39 New Business

40 1. Dana moved to approve the Contract Change Order for HMPS, contractor Delaware
41 Valley Utility Contractors Inc. to install a 6" HDPE Polyball gate valve instead of cast iron
42 which will decrease the contract price by \$502.38. Ed seconded the motion. The motion passed
43 unanimously.

44 2. Jack moved to approve the proposal for Reserve Pump Station Diversion from
45 Earthcore Services for:

46 a. Mobilization of ATV drill rig, tooling and crew - \$800.00 LS

1 b. ATV drill rig, auger probes (5@ up to 13' deep) - \$1,800.00/day
2 c. Portland, bentonite, asphalt (if required) - \$30.00/bag
3 upon verification of the contractor's insurance with East Goshen listed as additional insured.
4 Dana seconded the motion. Rick mentioned that the fill will be done by Public Works. The
5 motion passed unanimously.

6 3. Marydell Construction Phase Budget – Dan explained that some of the issues for
7 Marydell are more complex than anticipated. For the remaining 6 weeks of the job, he estimates
8 an additional cost of \$9,000.00. The original estimate was 4 hours/day for services and that time
9 has increased. Rick mentioned that information from some of the utilities was inaccurate. Dana
10 feels that there may be some issues already included in the bid and the contractor should pay for
11 an additional time spent on the project. Jack moved to authorize \$9,000.00 for Pennoni's
12 additional services to be paid using remaining funds from Pennoni budgets and then from the
13 Capital Reserve. Dana seconded the motion. The motion passed unanimously.
14

15 **Capacity Requests**

16 None
17

18 **Sewer Reports**

- 19 1. **Mark Miller, Director of Public Works**, provided the following report for March:
20 **Meters** – The meters were read on a daily basis. The Reservoir Road meter was reading
21 high due to debris on the probe. The portable flows are being read on a weekly basis
22 **Pump Stations** – Were visited on a daily basis.
23 **CC Collection**: We have been televising the interceptor line from Wilson Drive to
24 Westtown Way. We found a large amount of inflow behind 905 Airport Road. The repair
25 was done last week. We were able to locate another 20 to 30 thousand gallons. Due to
26 poor weather conditions we were not able to do the area between Baldwin Drive and
27 Reservoir Road. I hope to complete that section in the next 2 weeks.
28 **R.C. Collection**: The sewer lines in the Hunt Country development were cleaned and
29 televised. We found some minor inflow which we will correct.
30 All the pump stations were visited on a daily basis with no problems to report. Lenni
31 Electric was utilized to replace the electric panel after we found that the breakers were in
32 bad shape.
33 R.C. Plant: Nothing to report at this time.
34 Alarms: We received a total of 17 alarms
35 PA One Calls: We received 48 PA One calls for the month of April.
36

37 Rick mentioned that the Spinelli property on Line Rd has been purchased by Willistown
38 for open space.
39

- 40 2. **Pennoni**: Dan Barbato provided the following engineer's report:
41 **Invoices**: Invoices with summaries are provided under separate cover.
42 **Ridley Creek Sewage Treatment Plant (RCSTP)** – Pennoni continues to coordinate with
43 the Plant Operator and will provide operations assistance as needed. No issues were
44 brought to our attention in April.
45 **Marydell PS Elimination** – We continued to perform office support and daily field
46 observation of the sewer construction including shop drawing reviews, resolution of Paoli

1 Pike jack and boring casing misalignment, evaluation of contractor request to increase
2 depth of sewer along Paoli Pike to provide vertical flexibility on Boot Road jack and
3 bore, coordination of extra construction measures to be taken on Boot Road jack and bore
4 to minimize risk of misalignment, additional field meetings and coordination with PECO
5 to brace utility poles, multiple field meetings with Sunoco to locate active gas mains
6 along Boot Road and resolve requirements for protecting and observing mains during
7 jacking and boring, multiple gas main location test pits and an additional observation pit,
8 and coordination with PennDOT regarding traffic control concerns.

9 We also negotiated an agreed upon payment approach with the contractor, Ply-Mar
10 Construction, for the Sunoco-required observation pit during jacking and boring which
11 will include payment using bid items for "Miscellaneous Excavation and Backfill" and
12 "Soft Dig Test Pits" in addition to limited Time and Materials (T&M) work for
13 unforeseen conditions and new Sunoco requirements.

14 Ply-Mar began construction on March 26. They originally estimated 6-8 weeks to
15 complete the project; however, they have installed less than 50% of the sewer at the time
16 of this report (installed approx. 428 l.f. out of 955 l.f. total). We anticipate another 5-6
17 weeks from the time of this report to complete the project, estimated completion in late
18 June. The contract completion date is July 15.

19 We reviewed the contractor's second payment request and forwarded our
20 recommendation to the Township.

21 Hershey's Mill PS Diversion: We attended a pre-construction meeting with the
22 Township and contractor, Delaware Valley Utility Contractors (DVUC), on April 18.
23 We performed meeting follow-up tasks and pre-construction coordination including
24 review of DVUC's tax exempt status request, preparation of a project contact list,
25 notifications to Chester County Conservation District and PA Fish & Boat, review of
26 DVUC's pre-construction video, and an additional pre-construction field meeting with
27 DVUC regarding construction access and other matters.

28 Construction began May 7. We are performing daily field observation of the work.
29 DVUC directionally drilled approx. 600 feet from the Cornwallis Drive cul-de-sac to the
30 existing force main point of connection on the first day of work. The HDPE pipe is
31 expected to be pulled back through the drill hole by May 10, and cured-in-place manhole
32 lining of the two existing manholes is scheduled to begin May 13. DVUC estimates 4
33 weeks (from start of work on May 7) to complete the project. The contract completion
34 date is July 29, 2013.

35 We reviewed the remainder of shop drawings and construction submittals from the
36 contractor. We also reviewed the contractor's proposed material change for a gate valve
37 (from ductile iron to HDPE), and we negotiated a deduct change order with them. The
38 change order will be forwarded to the Authority for review and approval.

39 We also issued letters to unsuccessful bidders notifying them of the project award.

40 Reserve PS Elimination – There has been no activity on our part since the last report. We
41 submitted bid plans and near-final specifications to the Reserve at Spring Meadows HOA
42 for review on April 8, but they have not provided a response or approval of the easement
43 as of the time of this report. The project will be put out to bid after the HOA has granted
44 easement.

45 Semi-Annual I/I Report – We received flow data from the first month of metering at new
46 locations along the Chester Creek interceptor, and we are performing a cursory analysis

1 of the data at the time of this report. Our findings will be informally provided to the
2 Township via email.
3

4 **Update** – Marydell – Dan reported that the bore under Paoli Pike is done. They are
5 waiting for the bore contractor to come back to do Boot Road. Matt has done a good job
6 of overseeing everything. July 15 is the completion date. Dana feels that, in the future,
7 utilities must be located before the project starts.

8 **Hershey Mill** – Today they started to fuse pipe. Matt reported that the manhole liner is
9 installed.

10 **Reserve** – Rick will put an ad in the paper, open bids in June, and start the project in July.
11

- 12 3. **Big Fish Environmental Services, Inc.**, Scott Towler presented a report for April
13 2013. The following is a summary:

14 Treatment Process Operation

15 During March 2013 there were no exceedances of the final effluent discharge limitations
16 for outfall 001. There was no discharge from outfall 002.

17 The monthly average total phosphorus concentration was 0.29 mg/L as compared to the
18 discharge limitation of 0.5 mg/L. During the month, the final effluent total phosphorus
19 concentration discharged ranged from 0.16 mg/L to 0.37 mg/L.

20 During the month of April 2013 there are no anticipated non-compliance issues with
21 respect to the discharge permit limitations. It is noted that the final effluent CBOD5
22 collected on April 23 is under review due to suspected test error or contaminated sample.
23 The sample is being retested for CBOD5 including additional analysis for COD.

24 Transfer of treated effluent to the Applebrook Golf Course was initiated on April 26.
25 The Township Staff replaced the pump due to the original pump being seized and
26 drawing excessive amperage. The replacement pump is discharging an average of
27 167,926 gallons per day.

28 Composite samples of the influent wastewater pollutant concentrations and loading
29 entering the wastewater treatment facility are collected at the influent doghouse manhole.
30 The influent flow meter reading is collected from the SBR influent flow meter due to
31 inaccuracies with the field influent flow meter.

32 Sequencing batch reactors (SBRs) number 1, 3 and 4 were in service during the month of
33 March. Process monitoring of each SBR included ammonia as N, nitrite as N, Nitrate as
34 N, COD, SSV, MLSS and total phosphorus. Microscopic examinations and physical
35 observation of the SBR MLSS and foam color is ongoing. Foam concentrations
36 remained around the same concentration as during March. Present surface area coverage
37 during React Phase ranges from approx. 85 to 95%. The foam remains as light brown in
38 color and averages 2 to 4 inches in depth. The F:M ratios for SBR 3 and 4 were
39 increased to a range of 0.05 to 0.008 as lbs COD/lbs. MLSS increased sludge wasting
40 rates were implemented during the month to lower MLSS and increase F:M ratios.

41 Daily monitoring of the influent and final effluent 24-hour composites samples for total
42 phosphorus is ongoing. Daily analysis of the final effluent flow equalization grab sample
43 of total phosphorus is ongoing.

44 Addition of aluminum sulfate solution to the SBRs to assist with phosphorus removal
45 continued. The volume of aluminum sulfate solution to the SBRs was decreased at the
46 end of April as settleability of the SBR MLSS and total phosphorus removal through the

1 disc filters improved. A year-to-date daily average of 41.2 gallons per day of aluminum
2 sulfate solution has been used in the SBRs and addition prior to filtration.

3 SBR No. 2 remains out of service. Transfer of the mixed liquor was implemented during
4 early April. However, removal of all of the tanks contents wasn't effective with the
5 available equipment. The tank was partially filled to allow for the blower to operate and
6 prevent odor production.

7 Process Monitoring On-Line Instrumentation – The ChemScan phosphate analyzer
8 remains on line. Comparison testing for reactive (ortho) and total phosphorus is ongoing.
9 On site comparison, monitoring is measuring a significant difference among the analyzer
10 data as compared to the onsite laboratory data. Dave Kershner was contacted to confirm
11 calibration of the analyzer and adjust if needed. Suspended solids within the post final
12 effluent feed to the flow floc tank and filters may be fouling the analyzer.

13 Solids Dewatering and Disposal – During the month, the centrifuge dewatering system
14 was placed in service. Sludge wasting to the sludge holding tanks and decanting of the
15 sludge holding tanks was ongoing. Process monitoring included pH, total alkalinity and
16 total solids.

17 Sludge holding tank No.1 was in service. The level at the beginning of the month was
18 14.54 feet and the level at the end of the month was 10.84 feet. The initial total solids
19 concentration was 0.81% and ended the month as 0.63% total solids. A total of 46,200
20 gallons of supernatant was decanted during the month.

21 Sludge holding tank No. 2 was out of service. The level at the beginning of the month
22 was 1.57 feet and the level at the end of the month was 12.19 feet. The initial total solids
23 concentration was 0.53% and ended the month as 0.79% total solids. A total of 206,850
24 gallons of supernatant was decanted during the month.

25 Significant Storm Events – During April there were no significant precipitation events
26 contributing to excessive influent wastewater flows to the treatment facility.

27 Minor Repairs and Preventative Maintenance:

- 28 • Replaced the rear bearing, v-seal and O-rings on the centrifuge. Assistance was
29 provided to the Alfa-Laval technician.
- 30 • Jeff Bush from Worth & Co. was provided the hour meter information for replacement
31 of the failed analog hour meters (previous warranty issue left unresolved by Worth &
32 Co.)
- 33 • Investigated malfunction with centrifuge control panel UPS. Coordinating with Alfa-
34 Laval to determine corrective action.
- 35 • Township removed and replaced Applebrook pump.
- 36 • Determined signal loss between soda ash feed pump and Siemens control panel. This
37 pump is not in use, however, efforts to reinstate the communication will be investigated
38 during the month of May.

39
40 Scott commented that he will contact someone at Phoenixville to see what grease they
41 use. He may change the valve grease.

42 Rick complimented Scott on the good job he is doing.

43 Dana mentioned to Dan that they need to give Scott notice when the diversions are ready
44 to come to the plant.

1
2
3
4
5
6
7
8
9
10
11
12
13
14
15
16
17
18
19
20
21

Any Other Matter

1. Jack mentioned that Bryan DelMonte, Conservancy Board member, has asked several times if he can go online to see what's going on at the sewer plant. Scott mentioned that the Wastewater Treatment Works Security Act provides for security of wastewater treatment plants. Scott's monthly report is available on the Township website. A letter will be sent to Bryan.

2. Dan mentioned that Mike Ellis will also be at the next MA meeting. Mike may become the Pennoni rep for the MA.

Correspondence

None

Adjournment

There being no further business, Jack moved to adjourn the meeting. Fran seconded the motion. The motion passed unanimously. The meeting was adjourned at 8:30 pm.

Respectfully submitted,

Ruth Kiefer
Recording Secretary



INVOICE

Newark, DE
302-655-4451 Fax: 302-654-2895

Remit Payment To:
Pennoni Associates Inc.
P.O. Box 827328
Philadelphia, PA 19182-7328

East Goshen Municipal Authority
1580 Paoli Pike
West Chester, PA 19380-6199
Attention: Louis F. Smith, Twp Mgr.

Invoice # : 548281
Invoice Date : 05/23/2013
Project : EGMA1107
Project Name : HersheyMill & Reserve PS Div Des
Per

For Services Rendered through: 5/12/2013

Updated specifications for Reserve PS Diversion in preparation for bidding.

Phase : 1 -- Design

Total Phase : 1 -- Design

Labor :	427.50
Expense :	0.00
Phase Total :	427.50

Amount Due This Invoice

Fee :	69,200.00
Prior Billings :	64,733.75
Current Billings :	427.50
Total Billings :	65,161.25

\$427.50

Phase : 1 -- Design

Labor Class	Hours/ Units	Rate	Amount
Project Engineer	4.50	95.00	427.50
Labor Total:	4.50		427.50

Total Phase : 1 -- Design

Labor :	\$427.50
Expense :	\$0.00

Total Project : EGMA1107 -- HersheyMill & Reserve PS Div Des Per

Labor :	\$427.50
Expense :	\$0.00

OK RS 6-7-13

East Goshen Municipal Authority
EGMA1107 Invoice Summary
Invoice Date 05/23/2013

Project: EGMA1107
Pennoni Job No.: Hershey Mill & Reserve PS Div Des Per
Invoice No: 548281
Invoice Period: 4/14/2013 to 5/12/2013
Initial Authorization: \$ 60,200.00 **Date:** 7/7/2011
Contract Amount: \$ 69,200.00
Previously Invoiced: \$ 64,733.75
Current Invoice: \$ 427.50
Invoiced to Date (\$): \$ 65,161.25
Invoiced to Date (%): 94%
Remaining Budget (\$): \$ 4,038.75
Remaining Budget (%): 6%

Budget by Phase:

Phase No. ****
Phase Name: Hershey Mill & Reserve
Phase Budget: \$ 69,200.00
Previously Invoiced: \$ 64,733.75
Current Invoice: \$ 427.50
Invoiced to Date (\$): \$ 65,161.25
Invoiced to Date (%): 94%
Remaining Budget (\$): \$ 4,038.75
Remaining Budget (%): 6%

Comments: Updated specifications for Reserve PS Diversion in preparation for bidding.



PENNONI ASSOCIATES INC.
CONSULTING ENGINEERS

INVOICE

Newark, DE
302-655-4451 Fax: 302-654-2895

Remit Payment To:
Pennoni Associates Inc.
P.O. Box 827328
Philadelphia, PA 19182-7328

East Goshen Municipal Authority
1580 Paoli Pike
West Chester, PA 19380-6199
Attention: Louis F. Smith, Twp Mgr.

Invoice # : 548282
Invoice Date : 05/23/2013
Project : EGMA1301
Project Name : 2013 General Services

For Services Rendered through: 5/12/2013

Engineer's report for May MA meeting. Reviewed "Sustainable Communities Assessment" and provided comments related to the sanitary sewer system.

Phase : **** -- Professional Services

Total Phase : **** -- Professional Services

Labor : 393.75
Expense : 0.00
Phase Total : 393.75

Amount Due This Invoice

393.75

Fee : 10,000.00
Prior Billings : 2,328.75
Current Billings : 393.75
Total Billings : 2,722.50

Phase : **** -- Professional Services

Labor Class	Hours/Units	Rate	Amount
Senior Engineer	3.75	105.00	393.75
Labor Total:	3.75		393.75

Total Phase : **** -- Professional Services

Labor : \$393.75
Expense : \$0.00

Total Project : EGMA1301 -- 2013 General Services

Labor : \$393.75
Expense : \$0.00

OK RS 6-7-13

East Goshen Municipal Authority
EGMA1301 Invoice Summary
Invoice Date 05/23/2013

Project: EGMA1301
Pennoni Job No.: 2013 General Services
Invoice No: 548282
Invoice Period: 4/14/2013 to 5/12/2013
Initial Authorization: \$ 10,000.00 **Date:** 1/1/2013
Contract Amount: \$ 10,000.00
Previously Invoiced: \$ 2,328.75
Current Invoice: \$ 393.75
Invoiced to Date (\$): \$ 2,722.50
Invoiced to Date (%): 27%
Remaining Budget (\$): \$ 7,277.50
Remaining Budget (%): 73%

Budget by Phase:

Phase No. ****
Phase Name: 2013 General Services
Phase Budget: \$ 10,000.00
Previously Invoiced: \$ 2,328.75
Current Invoice: \$ 393.75
Invoiced to Date (\$): \$ 2,722.50
Invoiced to Date (%): 27%
Remaining Budget (\$): \$ 7,277.50
Remaining Budget (%): 73%

Comments: Engineer's report for May MA meeting. Reviewed "Sustainable Communities Assessment" and provided comments related to the sanitary sewer system.



PENNONI ASSOCIATES INC.
CONSULTING ENGINEERS

INVOICE

Newark, DE
302-655-4451 Fax: 302-654-2895

Remit Payment To:
Pennoni Associates Inc.
P.O. Box 827328
Philadelphia, PA 19182-7328

East Goshen Municipal Authority
1580 Paoli Pike
West Chester, PA 19380-6199
Attention: Louis F. Smith, Twp Mgr.

Invoice # : 548283
Invoice Date : 05/23/2013
Project : EGMA1302
Project Name : 2013 Semi-Annual I&I Reports

For Services Rendered through: 5/12/2013

Analyzed initial data from first month of relocated portable meters in Chester Creek sewer system and prepared email summary of findings.

Phase : **** -- Professional Services

Total Phase : **** -- Professional Services

Labor : 401.50
Expense : 0.00
Phase Total : 401.50

Amount Due This Invoice

\$401.50

Fee : 10,000.00
Prior Billings : 5,633.75
Current Billings : 401.50
Total Billings : 6,035.25

Phase : **** -- Professional Services

Labor Class	Hours/Units	Rate	Amount
Graduate Engineer	5.50	73.00	401.50
Labor Total:	5.50		401.50

Total Phase : **** -- Professional Services

Labor : \$401.50
Expense : \$0.00

Total Project : EGMA1302 -- 2013 Semi-Annual I&I Reports

Labor : \$401.50
Expense : \$0.00

OK RS 6-7-13

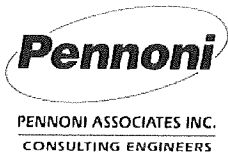
East Goshen Municipal Authority
EGMA1302 Invoice Summary
Invoice Date 05/23/2013

Project: EGMA1302
Pennoni Job No.: 2013 Semi-Annual I&I Reports
Invoice No: 548283
Invoice Period: 4/14/2013 to 5/12/2013
Initial Authorization: \$ 10,000.00 **Date:** 1/1/2013
Contract Amount: \$ 10,000.00
Previously Invoiced: \$ 5,633.75
Current Invoice: \$ 401.50
Invoiced to Date (\$): \$ 6,035.25
Invoiced to Date (%): 60%
Remaining Budget (\$): \$ 3,964.75
Remaining Budget (%): 40%

Budget by Phase:

Phase No.	****
Phase Name:	2013 Semi-Annual I&I Reports
Phase Budget:	\$ 10,000.00
Previously Invoiced:	\$ 5,633.75
Current Invoice:	\$ 401.50
Invoiced to Date (\$):	\$ 6,035.25
Invoiced to Date (%):	60%
Remaining Budget (\$):	\$ 3,964.75
Remaining Budget (%):	40%

Comments: Analyzed initial data from first month of relocated portable meters in Chester Creek sewer system and prepared email summary of findings.



INVOICE

Newark, DE
 302-655-4451 Fax: 302-654-2895

Remit Payment To:
Pennoni Associates Inc.
P.O. Box 827328
Philadelphia, PA 19182-7328

East Goshen Municipal Authority
1580 Paoli Pike
West Chester, PA 19380-6199
Attention: Louis F. Smith, Twp Mgr.

Invoice # : 548284
Invoice Date : 05/23/2013
Project : EGMA1304
Project Name : Hershey Mill PS Div Construction
Ph

For Services Rendered through: 5/12/2013

Performed on-site daily part-time construction observation; reviewed shop drawings and contractor's proposed alternative product for gate valve (HDPE instead of ductile iron), negotiated and prepared deduct Change Order #1 for alternative gate valve, coordinated response to contractor's tax exempt status request, conducted pre-construction meeting at Township building with Township staff and contractor, and attended separate follow-up pre-construction meeting on-site with contractor and Township staff.

Phase : ** -- Professional Services**

Total Phase : ** -- Professional Services**

Labor : 4,429.25
Expense : 0.00
Phase Total : 4,429.25

Amount Due This Invoice

\$4,429.25

Fee : 20,000.00
Prior Billings : 3,557.00
Current Billings : 4,429.25
Total Billings : 7,986.25

Phase : ** -- Professional Services**

<u>Class</u>	<u>Hours/ Units</u>	<u>Rate</u>	<u>Amount</u>
Senior Engineer	13.00	105.00	1,365.00
Project Engineer	4.50	95.00	427.50
Technical Specialist	23.50	75.00	1,762.50
Graduate Engineer	11.25	73.00	821.25
Survey Technician	1.00	53.00	53.00
Labor Total:	53.25		4,429.25

Total Phase : ** -- Professional Services**

Labor : \$4,429.25
Expense : \$0.00

Total Project : EGMA1304 -- Hershey Mill PS Div Construction Ph

Labor : \$4,429.25
Expense : \$0.00

ok RS
6-7-13

INVOICES DUE ON RECEIPT. Invoices outstanding over 30 days will have a Service Charge of 1 1/2% per month.

East Goshen Municipal Authority
EGMA1304 Invoice Summary
Invoice Date 05/23/2013

Project: EGMA1304
Pennoni Job No.: Hershey Mill PS Div Construction Phase
Invoice No: 548284
Invoice Period: 4/14/2013 to 5/12/2013
Initial Authorization: \$ 20,000.00 **Date:** 1/16/2013
Contract Amount: \$ 20,000.00
Previously Invoiced: \$ 3,557.00
Current Invoice: \$ 4,429.25
Invoiced to Date (\$): \$ 7,986.25
Invoiced to Date (%): 40%
Remaining Budget (\$): \$ 12,013.75
Remaining Budget (%): 60%

Budget by Phase:

Phase No. ****
Phase Name: Hershey Mill PS Div
Construction Phase
Phase Budget: \$ 20,000.00
Previously Invoiced: \$ 3,557.00
Current Invoice: \$ 4,429.25
Invoiced to Date (\$): \$ 7,986.25
Invoiced to Date (%): 40%
Remaining Budget (\$): \$ 12,013.75
Remaining Budget (%): 60%

Comments: Performed on-site daily part-time construction observation; reviewed shop drawings and contractor's proposed alternative product for gate valve (HDPE instead of ductile iron), negotiated and prepared deduct Change Order #1 for alternative gate valve, coordinated response to contractor's tax exempt status request, conducted pre-construction meeting at Township building with Township staff and contractor, and attended separate follow-up pre-construction meeting on-site with contractor and Township staff.



PENNONI ASSOCIATES INC.
CONSULTING ENGINEERS

INVOICE

Newark, DE
302-655-4451 Fax: 302-654-2895

Remit Payment To:
Pennoni Associates Inc.
P.O. Box 827328
Philadelphia, PA 19182-7328

East Goshen Municipal Authority
1580 Paoli Pike
West Chester, PA 19380-6199
Attention: Louis F. Smith, Twp Mgr.

Invoice # : 548285
Invoice Date : 05/23/2013
Project : EGMA1305
Project Name : Marydell PS Diversion Construction

For Services Rendered through: 5/12/2013

Performed on-site daily part-time construction observation; coordinated gas main locating with Sunoco including multiple field utility mark-outs, soft dig test pits, excavated drilling observation pit, and multiple field meetings; reviewed Payment Application #2; and coordinated approach to Boot Rd jack & bore with contractor to minimize risk of pipe misalignment.

Phase : **** -- Professional Services

Total Phase : **** -- Professional Services

Labor : 7,301.00
Expense : 0.00
Phase Total : 7,301.00

Amount Due This Invoice

\$7,301.00

Fee : 29,000.00
Prior Billings : 13,368.00
Current Billings : 7,301.00
Total Billings : 20,669.00

Phase : **** -- Professional Services

Labor Class	Hours/ Units	Rate	Amount
Senior Engineer	9.00	105.00	945.00
Project Engineer	2.50	95.00	237.50
Technical Specialist	67.00	75.00	5,025.00
Graduate Engineer	6.00	73.00	438.00
Project Representative/Inspector	9.50	69.00	655.50
Labor Total:	94.00		7,301.00

Total Phase : **** -- Professional Services

Labor : \$7,301.00
Expense : \$0.00

Total Project : EGMA1305 -- Marydell PS Diversion Construction

Labor : \$7,301.00
Expense : \$0.00

OK RS 6-7-13

East Goshen Municipal Authority
EGMA1305 Invoice Summary
Invoice Date 05/23/2013

Project: EGMA1305
Pennoni Job No.: Marydell PS Diversion Construction
Invoice No: 548285
Invoice Period: 4/14/2013 to 5/12/2013
Initial Authorization: \$ 29,000.00 **Date:** 1/16/2013
Contract Amount: \$ 29,000.00
Previously Invoiced: \$ 13,368.00
Current Invoice: \$ 7,301.00
Invoiced to Date (\$): \$ 20,669.00
Invoiced to Date (%): 71%
Remaining Budget (\$): \$ 8,331.00
Remaining Budget (%): 29%

Budget by Phase:

Phase Name:	Marydell PS Diversion Construction
Phase Budget:	\$ 29,000.00
Previously Invoiced:	\$ 13,368.00
Current Invoice:	\$ 7,301.00
Invoiced to Date (\$):	\$ 20,669.00
Invoiced to Date (%):	71%
Remaining Budget (\$):	\$ 8,331.00
Remaining Budget (%):	29%

Comments: Performed on-site daily part-time construction observation; coordinated gas main locating with Sunoco including multiple field utility mark-outs, soft dig test pits, excavated drilling observation pit, and multiple field meetings; reviewed Payment Application #2; and coordinated approach to Boot Rd jack & bore with contractor to minimize risk of pipe misalignment.



EARTH CORE
services

36261

1458 Shaner Drive Pottstown, PA 19465
p (610) 404-2570 f (610) 404-2580
rick@earthcoreusa.com

5/22/2013

East Goshen Municipal Authority
1580 Paoli Pike
West Chester, PA 19380

Invoice #: 6478

Job: RPSD

Completion Date: 5/22/2013

Mobilization	800.00
ATV rig, probes - 1 day @ \$1800/day	1,800.00

APPROVED BY: _____
DATE PAID: _____
CHECK #: _____
CHARGED TO: 07427.1000

OK TO PAY

RS

5/23/13

Total: \$2,600.00

PAID
5/31

CK # 2179

Thank you for your business. Prompt payment is appreciated and will result in the best rates on future projects. If full payment is not received within agreed upon terms, interest shall be charged at the legal rate allowed. The customer is responsible for all reasonable attorney fees and collection costs incurred.

INVOICE

SEND PAYMENT TO:
PA DEPARTMENT OF TRANSPORTATION
OFFICE OF COMPTROLLER OPERATIONS
AR PENNDOT - NON-APRAS
PO BOX 15758
HARRISBURG, PA 17105

36205

PAGE NO. 1

INVOICE DATE 05/10/2013
JOB NO. 731
INVOICE NO. 1801380439

Ship to:

APPROVED BY: MA
DATE PAID: _____
CHECK #: _____

Bill to: EAST GOSHEN MUNICIPAL
1580 PAOLI PIKE
WEST CHESTER PA 19380

CHARGED TO: 07425.1000

CUSTOMER ACCOUNT NO. 78001133	CUSTOMER ORDER NO. 06080224	CUSTOMER ACCOUNT CODE 610-205-6792
----------------------------------	--------------------------------	---------------------------------------

JOB DESCRIPTION AND TERMS:
INDIV & COMPANIES - SERVICES RENDERED (INSPECTION)
*** Include Invoice Number on your remittance or attach a copy of the invoice with your payment. For questions concerning this invoice, telephone the number located in the Customer Account Code box above.***

DOC ID	DESCRIPTION	REFERENCE	AMOUNT
	INSTALL SUB-SURFACE SEWER FACILITY	SR 2014	1,144.76
	INSTALL SUB-SURFACE SEWER FACILITY	SR 2014	1,159.45
	INSTALL SUB-SURFACE SEWER FACILITY	SR 2014	1,785.00
	<i>Many Well Diversion Inspection</i>		

NOTE! THIS INVOICE HAS BEEN PAID

MAKE PAYMENT TO:	PA DEPARTMENT OF TRANSPORTATION	TOTAL AMOUNT DUE	4,089.21
REVENUE CODE:	<i>ok R.S 6-7-13</i>		
ACCOUNT CODE:			

APPLICATION REVIEW/ PERMIT INSPECTION COSTS

CENTRAL OFFICE USE ONLY

- HIGHWAY OCCUPANCY PERMIT
- BRIDGE OCCUPANCY LICENSE
- APPLICATION REVIEW

PLEASE PRINT LEGIBLY

PAY PERIOD ENDING _____

NAME OF APPLICANT/PERMITEE East Goshen Municipal Authority		INSPECTOR <input type="checkbox"/> DEPARTMENT <input checked="" type="checkbox"/> CONSULTANT	APPLICATION/PERMIT/LICENSE NUMBER *06080224
APPLICANT/PERMITEE ADDRESS 1580 Paoli Pike		STATE ROUTE - SEGMENT - OFFSET 2014-0060-0030	ORG *062
CITY West Chester		BOROUGH OR TOWNSHIP East Goshen	COUNTY Chester
STATE PA	ZIP CODE 19380	REVIEWER'S/INSPECTOR'S NAME Frank DiMichele	STATE PROJECT NUMBER

DATE	MILEAGE			SUBSISTENCE		TIME			SUB TOTAL	ACKNOWLEDGEMENT
	MILES	RATE	AMOUNT	PAID FOR	AMOUNT	HOURS	RATE	AMOUNT		
3/26/2013	26	0.565	\$14.69			5	\$54.30	271.5	\$286.19	
							\$65.24			
3/27/2013	26	0.565	\$14.69			5	\$54.30	271.5	\$286.19	
							\$65.24			
3/28/2013	26	0.565	\$14.69			5	\$54.30	271.5	\$286.19	
							\$65.24			
3/29/2013	26	0.565	\$14.69			5	\$54.30	271.5	\$286.19	
							\$65.24			
		0.565					\$54.30			
		0.565					\$65.24			
		0.565					\$54.30			
		0.565					\$65.24			
		0.565					\$54.30			
		0.565					\$65.24			
		0.565					\$54.30			
		0.565					\$65.24			
		0.565					\$54.30			
		0.565					\$65.24			
		0.565					\$54.30			
		0.565					\$65.24			
		0.565					\$54.30			
		0.565					\$65.24			
		0.565					\$54.30			
		0.565					\$65.24			
		0.565					\$54.30			
		0.565					\$65.24			
		0.565					\$54.30			
		0.565					\$65.24			
		0.565					\$54.30			
		0.565					\$65.24			
		0.565					\$54.30			
		0.565					\$65.24			
		0.565					\$54.30			
		0.565					\$65.24			
		0.565					\$54.30			
		0.565					\$65.24			
		0.565					\$54.30			
		0.565					\$65.24			
		0.565					\$54.30			
		0.565					\$65.24			
		0.565					\$54.30			
		0.565					\$65.24			
		0.565					\$54.30			
		0.565					\$65.24			
		0.565					\$54.30			
		0.565					\$65.24			
		0.565					\$54.30			
		0.565					\$65.24			
		0.565					\$54.30			
		0.565					\$65.24			
		0.565					\$54.30			
		0.565					\$65.24			
		0.565					\$54.30			
		0.565					\$65.24			
		0.565					\$54.30			
		0.565					\$65.24			
		0.565					\$54.30			
		0.565					\$65.24			
		0.565					\$54.30			
		0.565					\$65.24			
		0.565					\$54.30			
		0.565					\$65.24			
		0.565					\$54.30			
		0.565					\$65.24			
		0.565					\$54.30			
		0.565					\$65.24			
		0.565					\$54.30			
		0.565					\$65.24			
		0.565					\$54.30			
		0.565					\$65.24			
		0.565					\$54.30			
		0.565					\$65.24			
		0.565					\$54.30			
		0.565					\$65.24			
		0.565					\$54.30			
		0.565					\$65.24			
		0.565					\$54.30			
		0.565					\$65.24			
		0.565					\$54.30			
		0.565					\$65.24			
		0.565					\$54.30			
		0.565					\$65.24			
		0.565					\$54.30			
		0.565					\$65.24			
		0.565					\$54.30			
		0.565					\$65.24			
		0.565					\$54.30			
		0.565					\$65.24			
		0.565					\$54.30			
		0.565					\$65.24			
		0.565					\$54.30			
		0.565					\$65.24			
		0.565					\$54.30			
		0.565					\$65.24			
		0.565					\$54.30			
		0.565					\$65.24			
		0.565					\$54.30			
		0.565					\$65.24			
		0.565					\$54.30			
		0.565					\$65.24			
		0.565					\$54.30			
		0.565					\$65.24			
		0.565					\$54.30			
		0.565					\$65.24			
		0.565					\$54.30			
		0.565					\$65.24			
		0.565					\$54.30			
		0.565					\$65.24			
		0.565					\$54.30			
		0.565					\$65.24			
		0.565					\$54.30			
		0.565					\$65.24			
		0.565					\$54.30			
		0.565					\$65.24			
		0.565					\$54.30			
		0.565					\$65.24			
		0.565					\$54.30			
		0.565					\$65.24			
		0.565					\$54.30			
		0.565					\$65.24			
		0.565					\$54.30			
		0.565					\$65.24			
		0.565					\$54.30			
		0.565					\$65.24			
		0.565					\$54.30			
		0.565					\$65.24			
		0.565					\$54.30			
		0.565					\$65.24			
		0.565					\$54.30			
		0.565					\$65.24			
		0.565					\$54.30			
		0.565					\$65.24			
		0.565					\$54.30			
		0.565					\$65.24			
		0.565					\$54.30			
		0.565					\$65.24			
		0.565					\$54.30			
		0.565					\$65.24			
		0.565					\$54.30			
		0.565					\$65.24			
		0.565					\$54.30			
		0.565					\$65.24			
		0.565					\$54.30			
		0.565					\$65.24			
		0.565					\$54.30			
		0.565					\$65.24			
		0.565					\$54.30			
		0.565					\$65.24			
		0.565					\$54.30			
		0.565					\$65.24			
		0.565					\$54.30			
		0.565					\$65.24			
		0.565					\$54.30			
		0.565								

APPLICATION REVIEW/ PERMIT INSPECTION COSTS

CENTRAL OFFICE USE ONLY

- HIGHWAY OCCUPANCY PERMIT
- BRIDGE OCCUPANCY LICENSE
- APPLICATION REVIEW

PLEASE PRINT LEGIBLY

PAY PERIOD ENDING _____

NAME OF APPLICANT/PERMITEE <i>East Goshen Muni Auth</i>		INSPECTOR <input type="checkbox"/> DEPARTMENT <input checked="" type="checkbox"/> CONSULTANT		APPLICATION/PERMIT/LICENSE NUMBER <i>06080224</i>	
APPLICANT/PERMITEE ADDRESS <i>1580 Paoli Pike</i>		STATE ROUTE - SEGMENT - OFFSET <i>2014-0060 / 0030</i>			ORG
CITY <i>West Chester</i>		BOROUGH OR TOWNSHIP <i>E. Goshen</i>		COUNTY <i>Chester</i>	
STATE <i>Pa</i>	ZIP CODE <i>19380</i>	REVIEWER'S/INSPECTOR'S NAME <i>Frank DiMichele</i>			STATE PROJECT NUMBER

DATE	MILEAGE			SUBSISTENCE		TIME			SUB TOTAL	ACKNOWLEDGEMENT
	MILES	RATE	AMOUNT	PAID FOR	AMOUNT	HOURS	RATE	AMOUNT		
<i>3/26</i>	<i>26</i>	<i>0.565</i>				<i>5</i>	<i>\$54.30</i>			<i>[Signature]</i>
							<i>\$65.24</i>			
<i>3/27</i>	<i>26</i>	<i>0.565</i>				<i>5</i>	<i>\$54.30</i>			<i>[Signature]</i>
							<i>\$65.24</i>			
<i>3/28</i>	<i>26</i>	<i>0.565</i>				<i>5</i>	<i>\$54.30</i>			<i>[Signature]</i>
							<i>\$65.24</i>			
<i>3/29</i>	<i>26</i>	<i>0.565</i>				<i>5</i>	<i>\$54.30</i>			<i>[Signature]</i>
							<i>\$65.24</i>			
<i>/</i>		<i>0.565</i>					<i>\$54.30</i>			
<i>/</i>		<i>0.565</i>					<i>\$65.24</i>			
<i>/</i>		<i>0.565</i>					<i>\$54.30</i>			
<i>/</i>		<i>0.565</i>					<i>\$65.24</i>			
<i>/</i>		<i>0.565</i>					<i>\$54.30</i>			
<i>/</i>		<i>0.565</i>					<i>\$65.24</i>			
<i>/</i>		<i>0.565</i>					<i>\$54.30</i>			
<i>/</i>		<i>0.565</i>					<i>\$65.24</i>			
<i>/</i>		<i>0.565</i>					<i>\$54.30</i>			
<i>/</i>		<i>0.565</i>					<i>\$65.24</i>			
<i>/</i>		<i>0.565</i>					<i>\$54.30</i>			
<i>/</i>		<i>0.565</i>					<i>\$65.24</i>			
<i>/</i>		<i>0.565</i>					<i>\$54.30</i>			
<i>/</i>		<i>0.565</i>					<i>\$65.24</i>			
<i>/</i>		<i>0.565</i>					<i>\$54.30</i>			
<i>/</i>		<i>0.565</i>					<i>\$65.24</i>			
<i>/</i>		<i>0.565</i>					<i>\$54.30</i>			
<i>/</i>		<i>0.565</i>					<i>\$65.24</i>			
<i>/</i>		<i>0.565</i>					<i>\$54.30</i>			
<i>/</i>		<i>0.565</i>					<i>\$65.24</i>			
<i>/</i>		<i>0.565</i>					<i>\$54.30</i>			
<i>/</i>		<i>0.565</i>					<i>\$65.24</i>			
<i>/</i>		<i>0.565</i>					<i>\$54.30</i>			
<i>/</i>		<i>0.565</i>					<i>\$65.24</i>			
<i>/</i>		<i>0.565</i>					<i>\$54.30</i>			
<i>/</i>		<i>0.565</i>					<i>\$65.24</i>			
<i>/</i>		<i>0.565</i>					<i>\$54.30</i>			
<i>/</i>		<i>0.565</i>					<i>\$65.24</i>			
<i>/</i>		<i>0.565</i>					<i>\$54.30</i>			
<i>/</i>		<i>0.565</i>					<i>\$65.24</i>			
<i>/</i>		<i>0.565</i>					<i>\$54.30</i>			
<i>/</i>		<i>0.565</i>					<i>\$65.24</i>			
<i>/</i>		<i>0.565</i>					<i>\$54.30</i>			
<i>/</i>		<i>0.565</i>					<i>\$65.24</i>			
<i>/</i>		<i>0.565</i>					<i>\$54.30</i>			
<i>/</i>		<i>0.565</i>					<i>\$65.24</i>			
<i>/</i>		<i>0.565</i>					<i>\$54.30</i>			
<i>/</i>		<i>0.565</i>					<i>\$65.24</i>			
<i>/</i>		<i>0.565</i>					<i>\$54.30</i>			
<i>/</i>		<i>0.565</i>					<i>\$65.24</i>			
<i>/</i>		<i>0.565</i>					<i>\$54.30</i>			
<i>/</i>		<i>0.565</i>					<i>\$65.24</i>			
<i>/</i>		<i>0.565</i>					<i>\$54.30</i>			
<i>/</i>		<i>0.565</i>					<i>\$65.24</i>			
<i>/</i>		<i>0.565</i>					<i>\$54.30</i>			
<i>/</i>		<i>0.565</i>					<i>\$65.24</i>			
<i>/</i>		<i>0.565</i>					<i>\$54.30</i>			
<i>/</i>		<i>0.565</i>					<i>\$65.24</i>			
<i>/</i>		<i>0.565</i>					<i>\$54.30</i>			
<i>/</i>		<i>0.565</i>					<i>\$65.24</i>			
<i>/</i>		<i>0.565</i>					<i>\$54.30</i>			
<i>/</i>		<i>0.565</i>					<i>\$65.24</i>			
<i>/</i>		<i>0.565</i>					<i>\$54.30</i>			
<i>/</i>		<i>0.565</i>					<i>\$65.24</i>			
<i>/</i>		<i>0.565</i>					<i>\$54.30</i>			
<i>/</i>		<i>0.565</i>					<i>\$65.24</i>			
<i>/</i>		<i>0.565</i>					<i>\$54.30</i>			
<i>/</i>		<i>0.565</i>					<i>\$65.24</i>			
<i>/</i>		<i>0.565</i>					<i>\$54.30</i>			
<i>/</i>		<i>0.565</i>					<i>\$65.24</i>			
<i>/</i>		<i>0.565</i>					<i>\$54.30</i>			
<i>/</i>		<i>0.565</i>					<i>\$65.24</i>			
<i>/</i>		<i>0.565</i>					<i>\$54.30</i>			
<i>/</i>		<i>0.565</i>					<i>\$65.24</i>			
<i>/</i>		<i>0.565</i>					<i>\$54.30</i>			
<i>/</i>		<i>0.565</i>					<i>\$65.24</i>			
<i>/</i>		<i>0.565</i>					<i>\$54.30</i>			
<i>/</i>		<i>0.565</i>					<i>\$65.24</i>			
<i>/</i>		<i>0.565</i>					<i>\$54.30</i>			
<i>/</i>		<i>0.565</i>					<i>\$65.24</i>			
<i>/</i>		<i>0.565</i>					<i>\$54.30</i>			
<i>/</i>		<i>0.565</i>					<i>\$65.24</i>			
<i>/</i>		<i>0.565</i>					<i>\$54.30</i>			
<i>/</i>		<i>0.565</i>					<i>\$65.24</i>			
<i>/</i>		<i>0.565</i>					<i>\$54.30</i>			
<i>/</i>		<i>0.565</i>					<i>\$65.24</i>			
<i>/</i>		<i>0.565</i>					<i>\$54.30</i>			
<i>/</i>		<i>0.565</i>					<i>\$65.24</i>			
<i>/</i>		<i>0.565</i>					<i>\$54.30</i>			
<i>/</i>		<i>0.565</i>					<i>\$65.24</i>			
<i>/</i>		<i>0.565</i>					<i>\$54.30</i>			
<i>/</i>		<i>0.565</i>					<i>\$65.24</i>			
<i>/</i>		<i>0.565</i>					<i>\$54.30</i>			
<i>/</i>		<i>0.565</i>					<i>\$65.24</i>			
<i>/</i>		<i>0.565</i>					<i>\$54.30</i>			
<i>/</i>		<i>0.565</i>					<i>\$65.24</i>			
<i>/</i>		<i>0.565</i>					<i>\$54.30</i>			
<i>/</i>		<i>0.565</i>					<i>\$65.24</i>			
<i>/</i>		<i>0.565</i>					<i>\$54.30</i>			
<i>/</i>		<i>0.565</i>					<i>\$65.24</i>			
<i>/</i>		<i>0.565</i>					<i>\$54.30</i>			
<i>/</i>		<i>0.565</i>					<i>\$65.24</i>			
<i>/</i>		<i>0.565</i>					<i>\$54.30</i>			
<i>/</i>		<i>0.565</i>					<i>\$65.24</i>			
<i>/</i>		<i>0.565</i>					<i>\$54.30</i>			
<i>/</i>		<i>0.565</i>					<i>\$65.24</i>			
<i>/</i>		<i>0.565</i>					<i>\$54.30</i>			
<i>/</i>		<i>0.565</i>					<i>\$65.24</i>			
<i>/</i>		<i>0.565</i>					<i>\$54.30</i>			
<i>/</i>		<i>0.565</i>					<i>\$65.24</i>			
<i>/</i>		<i>0.565</i>					<i>\$54.30</i>			
<i>/</i>		<i>0.565</i>					<i>\$65.24</i>			
<i>/</i>		<i>0.565</i>					<i>\$54.30</i>			
<i>/</i>		<i>0.565</i>					<i>\$65.24</i>			
<i>/</i>		<i>0.565</i>					<i>\$54.30</i>			
<i>/</i>		<i>0.565</i>					<i>\$65.24</i>			
<i>/</i>		<i>0.565</i>					<i>\$54.30</i>			
<i>/</i>		<i>0.565</i>					<i>\$65.24</i>			
<i>/</i>		<i>0.565</i>					<i>\$54.30</i>			
<i>/</i>		<i>0.565</i>					<i>\$65.24</i>			
<i>/</i>		<i>0.565</i>					<i>\$54.30</i>			
<i>/</i>		<i>0.565</i>					<i>\$65.24</i>			
<i>/</i>		<i>0.565</i>					<i>\$54.30</i>			
<i>/</i>		<i>0.565</i>					<i>\$65.24</i>			
<i>/</i>		<i>0.565</i>					<i>\$54.30</i>			
<i>/</i>		<i>0.565</i>					<i>\$65.24</i>			
<i>/</i>		<i>0.565</i>					<i>\$54.30</i>			
<i>/</i>		<i>0.565</i>					<i>\$65.24</i>			
<i>/</i>		<i>0.565</i>					<i>\$54.30</i>			
<i>/</i>		<i>0.565</i>					<i>\$65.24</i>			
<i>/</i>		<i>0.565</i>					<i>\$54.30</i>			
<i>/</i>		<i>0.565</i>					<i>\$65.24</i>			
<i>/</i>		<i>0.565</i>								

Highway Occupancy Permit		Permit No. 06080224
Name and Address of Permittee: East Goshen Municipal Authority 1580 Paoli Pike West Chester, PA 19380	County: Chester	Issue Date: 8/16/2012
	County Contact Number: (484) 340-3220	Expiration Date: 8/16/2013
	Issuing District Office: 06	Application Number: 15627
	District Contact Number: (610) 205-6795	Account Number:
	Municipalities: EAST GOSHEN Township	Permit Fee: 0.00

Immediately upon completion of the work Permittee shall notify the permit office where application was made. Subject to all the conditions, restrictions, and regulations prescribed by the Pennsylvania Department of Transportation, (see in particular 67 Pa. Code, Chapter 212, 441 and 459 and State Highway Law, 36 P.S. Section 670 - 411, 420 and 421) and subject to the plans, special conditions, or restrictions herein set forth or attached hereto. This permit shall be located at the work site and shall be available for inspection by any police officer or Department representative.

Location and Description of Work			Permit No. 06080224
1 of 2	State Route #: 2014 Segment(s): From 0060 To 0060 Offset(s): From 0030 To 0533	641: Install Sub-surface Sewer Facility at	
2 of 2	State Route #: 2020 Segment(s): From 0170 To 0170 Offset(s): From 0050 To 0050	641: Install Sub-surface Sewer Facility at	

Permit Conditions		Permit No. 06080224
1 of 12	PERMITTEE IS RESPONSIBLE FOR ENSURING THAT MUD, SILT AND OTHER DEBRIS IS REMOVED FROM VEHICLES AND TIRES (BY POWER WASH, ETC.) BEFORE ENTERING ONTO THE HIGHWAY.	
2 of 12	BEFORE DETOUR IS SET UP, PERMITTEE MUST NOTIFY NEWS MEDIA, EMERGENCY SERVICES, AND AFFECTED SCHOOL DISTRICTS.	
3 of 12	NO LANES MAY BE RESTRICTED BETWEEN THE HOURS OF 6:00 AM TO 9:00 AM OR BETWEEN THE HOURS OF 3:00 PM TO 6:00 PM.	
4 of 12	ALL DISTURBED AREAS OUTSIDE THE PAVEMENT OR SHOULDER SHALL BE RESTORED TO A CONDITION AT LEAST EQUAL TO THAT WHICH EXISTED BEFORE THE START OF WORK.	
5 of 12	DEPARTMENT PERSONNEL WILL BE AVAILABLE FOR PRE-BID MEETING WITH ADVANCE NOTIFICATION.	
6 of 12	DEPARTMENT MUST BE NOTIFIED IN WRITING TWO WEEKS IN ADVANCE OF PRE-CONSTRUCTION MEETING.	
7 of 12	AN INSPECTOR, WHEN AVAILABLE, WILL BE ASSIGNED ON MORE THAN A SPOT INSPECTION BASIS. PERMITTEE WILL BE CHARGED ALL INSPECTION COSTS INCURRED BY THE DEPARTMENT.	
8 of 12	CONTACT COUNTY PERMIT INSPECTOR AT LEAST 3 WORK DAYS PRIOR TO START OF WORK AT 484-340-3220.	
9 of 12	Approved by Manny with the comments on the marked up detour plan	
10 of 12	CONTRACTOR MUST NOTIFY THE PENNDOT PRESS OFFICE AT 610 205-6797 A MINIMUM OF 2 WEEKS PRIOR TO START OF DETOUR. PLEASE CONTACT DAN WEHNER, SPECIAL HAULING SUPERVISOR @ 610 205-6787 AT LEAST 10 WORKING DAYS PRIOR TO START OF DETOUR.	
11 of 12	CONTRACTOR MUST NOTIFY THE PENNDOT PRESS OFFICE AT 610 205-6797 A MINIMUM OF FOUR WORKING DAYS PRIOR TO THE CLOSING OF TRAVEL LANE(S) ONLY. CHAPTER 459.8(M)(3) STATES; A MANHOLE, INCLUDING THOSE CAST-IN-PLACE, SHALL BE CONSTRUCTED IN COMPLIANCE WITH CURRENT INDUSTRY STANDARDS AND SECTION 713.2(C) OF PUB 408.	

Permit Conditions		Permit No. 06080224
12 of 12	OPEN CUT INSTALLATION OF NEW 8" PVC SANITARY SEWER PIPE ALONG SHOULDER AND ACROSS ROADWAY @ APPROX SR 2014 SEG 0060 OFFSET 0533. JACK AND BORE TRENCHLESS INSTALLATION OF NEW 8" PVC SANITARY SEWER PIPE ACROSS ROAD @ APPROX. SEG 0050	

Acknowledgement of Completion Permit work has been completed: Date: _____ By: _____	Barry J Schoch, P.E. _____ Secretary of Transportation
	Lester C. Toaso _____ District Executive

APPLICATION REVIEW/ PERMIT INSPECTION COSTS

CENTRAL OFFICE USE ONLY

- HIGHWAY OCCUPANCY PERMIT
- BRIDGE OCCUPANCY LICENSE
- APPLICATION REVIEW

PLEASE PRINT LEGIBLY

PAY PERIOD ENDING _____

NAME OF APPLICANT/PERMITEE East Goshen Municipal Authority		INSPECTOR <input type="checkbox"/> DEPARTMENT <input checked="" type="checkbox"/> CONSULTANT		APPLICATION/PERMIT/LICENSE NUMBER *06080224	
APPLICANT/PERMITEE ADDRESS 1580 Paoli Pike		STATE ROUTE - SEGMENT - OFFSET 2014-0060-0030			ORG *062
CITY West Chester		BOROUGH OR TOWNSHIP East Goshen			COUNTY Chester
STATE PA	ZIP CODE 19380	REVIEWER'S/INSPECTOR'S NAME Frank DiMichele			STATE PROJECT NUMBER

DATE	MILEAGE			SUBSISTENCE		TIME			SUB TOTAL	ACKNOWLEDGEMENT
	MILES	RATE	AMOUNT	PAID FOR	AMOUNT	HOURS	RATE	AMOUNT		
4/1/2013	26	0.565	\$14.69			4	\$54.30	217.2	\$231.89	
							\$65.24			
4/2/2013	26	0.565	\$14.69			4	\$54.30	217.2	\$231.89	
							\$65.24			
4/3/2013	26	0.565	\$14.69			4	\$54.30	217.2	\$231.89	
							\$65.24			
4/4/2013	26	0.565	\$14.69			4	\$54.30	217.2	\$231.89	
							\$65.24			
4/5/2013	26	0.565	\$14.69			4	\$54.30	217.2	\$231.89	
							\$65.24			
		0.565					\$54.30			
							\$65.24			
		0.565					\$54.30			
							\$65.24			
		0.565					\$54.30			
							\$65.24			
		0.565					\$54.30			
							\$65.24			
		0.565					\$54.30			
							\$65.24			
		0.565					\$54.30			
							\$65.24			
		0.565					\$54.30			
							\$65.24			
		0.565					\$54.30			
							\$65.24			
		0.565					\$54.30			
							\$65.24			
		0.565					\$54.30			
							\$65.24			
SUBTOTALS	130		\$73.45					1086	\$1,159.45	

A PAYROLL ADDITIVE OF _____ % WILL BE ADDED TO ALL DEPARTMENT SALARIES.	TOTAL MILEAGE AMOUNT \$ <u>73.45</u> TOTAL SUBSISTENCE \$ _____ TOTAL SALARY AMOUNT \$ <u>1,086.00</u> PAYROLL ADDITIVE \$ _____ MISCELLANEOUS COSTS \$ _____ GRAND TOTAL \$ <u>1,159.45</u>
---	---

FIELD INSPECTOR'S DIARY REFERENCE (INSPECTION ONLY): BOOK NO.: _____ PAGE NO.: _____ THRU PAGE NO.: _____	NUMBER OF BILLING _____ Indicator number of billing. Initial billing to include copy of documentation. When final, indicate number with word final.
--	--

APPLICATION REVIEW/ PERMIT INSPECTION COSTS

CENTRAL OFFICE USE ONLY

- HIGHWAY OCCUPANCY PERMIT
- BRIDGE OCCUPANCY LICENSE
- APPLICATION REVIEW

PLEASE PRINT LEGIBLY

PAY PERIOD ENDING _____

NAME OF APPLICANT/PERMITEE East Goshen Muni Auth		INSPECTOR <input type="checkbox"/> DEPARTMENT <input checked="" type="checkbox"/> CONSULTANT	APPLICATION/PERMIT/LICENSE NUMBER 06080524
APPLICANT/PERMITEE ADDRESS 1580 Paoli Pike		STATE ROUTE - SEGMENT - OFFSET 2014-0060/0030	ORG
CITY West Chester		BOROUGH OR TOWNSHIP East Goshen Twp	COUNTY Chester
STATE Pa	ZIP CODE 19380	REVIEWER'S/INSPECTOR'S NAME Frank DiMichele	STATE PROJECT NUMBER

DATE	MILEAGE			SUBSISTENCE		TIME			SUB TOTAL	ACKNOWLEDGEMENT
	MILES	RATE	AMOUNT	PAID FOR	AMOUNT	HOURS	RATE	AMOUNT		
4/1	26	0.565				4	\$54.30			<i>[Signature]</i>
4/2	26	0.565				4	\$65.24			<i>[Signature]</i>
4/3	26	0.565				4	\$54.30			<i>[Signature]</i>
4/4	26	0.565				4	\$65.24			<i>[Signature]</i>
4/5	26	0.565				4	\$54.30			<i>[Signature]</i>
		0.565					\$65.24			
		0.565					\$54.30			
		0.565					\$65.24			
		0.565					\$54.30			
		0.565					\$65.24			
		0.565					\$54.30			
		0.565					\$65.24			
		0.565					\$54.30			
		0.565					\$65.24			
		0.565					\$54.30			
		0.565					\$65.24			
		0.565					\$54.30			
		0.565					\$65.24			
		0.565					\$54.30			
		0.565					\$65.24			
SUBTOTALS										

<p>A PAYROLL ADDITIVE OF _____% WILL BE ADDED TO ALL DEPARTMENT SALARIES.</p>	<table style="width:100%;"> <tr><td>TOTAL MILEAGE AMOUNT</td><td>\$ _____</td></tr> <tr><td>TOTAL SUBSISTENCE</td><td>\$ _____</td></tr> <tr><td>TOTAL SALARY AMOUNT</td><td>\$ _____</td></tr> <tr><td>PAYROLL ADDITIVE</td><td>\$ _____</td></tr> <tr><td>MISCELLANEOUS COSTS</td><td>\$ _____</td></tr> <tr><td>GRAND TOTAL</td><td>\$ _____</td></tr> </table>	TOTAL MILEAGE AMOUNT	\$ _____	TOTAL SUBSISTENCE	\$ _____	TOTAL SALARY AMOUNT	\$ _____	PAYROLL ADDITIVE	\$ _____	MISCELLANEOUS COSTS	\$ _____	GRAND TOTAL	\$ _____
TOTAL MILEAGE AMOUNT	\$ _____												
TOTAL SUBSISTENCE	\$ _____												
TOTAL SALARY AMOUNT	\$ _____												
PAYROLL ADDITIVE	\$ _____												
MISCELLANEOUS COSTS	\$ _____												
GRAND TOTAL	\$ _____												

FIELD INSPECTOR'S DIARY REFERENCE (INSPECTION ONLY): BOOK NO.: _____ PAGE NO.: _____ THRU PAGE NO.: _____	NUMBER OF BILLING _____ Indicator number of billing. Initial billing to include copy of documentation. When final, indicate number with word final.
--	--

Highway Occupancy Permit		Permit No. 06080224
Name and Address of Permittee: East Goshen Municipal Authority 1580 Paoli Pike West Chester, PA 19380	County: Chester	Issue Date: 8/16/2012
	County Contact Number: (484) 340-3220	Expiration Date: 8/16/2013
	Issuing District Office: 06	Application Number: 15627
	District Contact Number: (610) 205-6795	Account Number:
	Municipalities: EAST GOSHEN Township	Permit Fee: 0.00

Immediately upon completion of the work Permittee shall notify the permit office where application was made. Subject to all the conditions, restrictions, and regulations prescribed by the Pennsylvania Department of Transportation, (see in particular 67 Pa. Code, Chapter 212, 441 and 459 and State Highway Law, 36 P.S. Section 670 - 411, 420 and 421) and subject to the plans, special conditions, or restrictions herein set forth or attached hereto. This permit shall be located at the work site and shall be available for inspection by any police officer or Department representative.

Location and Description of Work		Permit No. 06080224
1 of 2	State Route #: 2014 Segment(s): From 0060 To 0060 Offset(s): From 0030 To 0533	641: Install Sub-surface Sewer Facility at
2 of 2	State Route #: 2020 Segment(s): From 0170 To 0170 Offset(s): From 0050 To 0050	641: Install Sub-surface Sewer Facility at

Permit Conditions		Permit No. 06080224
1 of 12	PERMITTEE IS RESPONSIBLE FOR ENSURING THAT MUD, SILT AND OTHER DEBRIS IS REMOVED FROM VEHICLES AND TIRES (BY POWER WASH, ETC.) BEFORE ENTERING ONTO THE HIGHWAY.	
2 of 12	BEFORE DETOUR IS SET UP, PERMITTEE MUST NOTIFY NEWS MEDIA, EMERGENCY SERVICES, AND AFFECTED SCHOOL DISTRICTS.	
3 of 12	NO LANES MAY BE RESTRICTED BETWEEN THE HOURS OF 6:00 AM TO 9:00 AM OR BETWEEN THE HOURS OF 3:00 PM TO 6:00 PM.	
4 of 12	ALL DISTURBED AREAS OUTSIDE THE PAVEMENT OR SHOULDER SHALL BE RESTORED TO A CONDITION AT LEAST EQUAL TO THAT WHICH EXISTED BEFORE THE START OF WORK.	
5 of 12	DEPARTMENT PERSONNEL WILL BE AVAILABLE FOR PRE-BID MEETING WITH ADVANCE NOTIFICATION.	
6 of 12	DEPARTMENT MUST BE NOTIFIED IN WRITING TWO WEEKS IN ADVANCE OF PRE-CONSTRUCTION MEETING.	
7 of 12	AN INSPECTOR, WHEN AVAILABLE, WILL BE ASSIGNED ON MORE THAN A SPOT INSPECTION BASIS. PERMITTEE WILL BE CHARGED ALL INSPECTION COSTS INCURRED BY THE DEPARTMENT.	
8 of 12	CONTACT COUNTY PERMIT INSPECTOR AT LEAST 3 WORK DAYS PRIOR TO START OF WORK AT 484-340-3220.	
9 of 12	Approved by Manny with the comments on the marked up detour plan	
10 of 12	CONTRACTOR MUST NOTIFY THE PENNDOT PRESS OFFICE AT 610 205-6797 A MINIMUM OF 2 WEEKS PRIOR TO START OF DETOUR. PLEASE CONTACT DAN WEHNER, SPECIAL HAULING SUPERVISOR @ 610 205-6787 AT LEAST 10 WORKING DAYS PRIOR TO START OF DETOUR.	
11 of 12	CONTRACTOR MUST NOTIFY THE PENNDOT PRESS OFFICE AT 610 205-6797 A MINIMUM OF FOUR WORKING DAYS PRIOR TO THE CLOSING OF TRAVEL LANE(S) ONLY. CHAPTER 459.8(M)(3) STATES; A MANHOLE, INCLUDING THOSE CAST-IN-PLACE, SHALL BE CONSTRUCTED IN COMPLIANCE WITH CURRENT INDUSTRY STANDARDS AND SECTION 713.2(C) OF PUB 408.	

APPLICATION REVIEW/ PERMIT INSPECTION COSTS

CENTRAL OFFICE USE ONLY

- HIGHWAY OCCUPANCY PERMIT
- BRIDGE OCCUPANCY LICENSE
- APPLICATION REVIEW

PLEASE PRINT LEGIBLY

PAY PERIOD ENDING _____

NAME OF APPLICANT/PERMITEE East Goshen Municipal Authority		INSPECTOR <input type="checkbox"/> DEPARTMENT <input checked="" type="checkbox"/> CONSULTANT	APPLICATION/PERMIT/LICENSE NUMBER *06080224
APPLICANT/PERMITEE ADDRESS 1580 Paoli Pike		STATE ROUTE - SEGMENT - OFFSET 2014-0060-0030	ORG *062
CITY West Chester		BOROUGH OR TOWNSHIP East Goshen	COUNTY Chester
STATE PA	ZIP CODE 19380	REVIEWER'S/INSPECTOR'S NAME Frank DiMichele	STATE PROJECT NUMBER

DATE	MILEAGE			SUBSISTENCE		TIME			SUB TOTAL	ACKNOWLEDGEMENT
	MILES	RATE	AMOUNT	PAID FOR	AMOUNT	HOURS	RATE	AMOUNT		
4/8/2013	18	0.565	\$10.17			3	\$54.30	162.9	\$173.07	
							\$65.24			
4/9/2013	18	0.565	\$10.17			3	\$54.30	162.9	\$173.07	
							\$65.24			
4/10/2013	18	0.565	\$10.17			3	\$54.30	162.9	\$173.07	
							\$65.24			
4/11/2013	18	0.565	\$10.17			3	\$54.30	162.9	\$173.07	
							\$65.24			
4/12/2013	18	0.565	\$10.17			3	\$54.30	162.9	\$173.07	
							\$65.24			
4/15/2013	18	0.565	\$10.17			3	\$54.30	162.9	\$173.07	
							\$65.24			
4/16/2013	18	0.565	\$10.17			3	\$54.30	162.9	\$173.07	
							\$65.24			
4/17/2013	18	0.565	\$10.17			3	\$54.30	162.9	\$173.07	
							\$65.24			
4/18/2013	18	0.565	\$10.17			4	\$54.30	217.2	\$227.37	
							\$65.24			
4/19/2013	18	0.565	\$10.17			3	\$54.30	162.9	\$173.07	
							\$65.24			
		0.565					\$54.30			
							\$65.24			
		0.565					\$54.30			
							\$65.24			
		0.565					\$54.30			
							\$65.24			
		0.565					\$54.30			
							\$65.24			
SUBTOTALS	180		\$101.70					1683.3	\$1,785.00	

<p>A PAYROLL ADDITIVE OF _____% WILL BE ADDED TO ALL DEPARTMENT SALARIES.</p>	<table style="width: 100%; border-collapse: collapse;"> <tr><td>TOTAL MILEAGE AMOUNT</td><td style="text-align: right;">\$ <u>101.70</u></td></tr> <tr><td>TOTAL SUBSISTENCE</td><td style="text-align: right;">\$ _____</td></tr> <tr><td>TOTAL SALARY AMOUNT</td><td style="text-align: right;">\$ <u>1,683.30</u></td></tr> <tr><td>PAYROLL ADDITIVE</td><td style="text-align: right;">\$ _____</td></tr> <tr><td>MISCELLANEOUS COSTS</td><td style="text-align: right;">\$ _____</td></tr> <tr><td>GRAND TOTAL</td><td style="text-align: right;">\$ <u>1,785.00</u></td></tr> </table>	TOTAL MILEAGE AMOUNT	\$ <u>101.70</u>	TOTAL SUBSISTENCE	\$ _____	TOTAL SALARY AMOUNT	\$ <u>1,683.30</u>	PAYROLL ADDITIVE	\$ _____	MISCELLANEOUS COSTS	\$ _____	GRAND TOTAL	\$ <u>1,785.00</u>
TOTAL MILEAGE AMOUNT	\$ <u>101.70</u>												
TOTAL SUBSISTENCE	\$ _____												
TOTAL SALARY AMOUNT	\$ <u>1,683.30</u>												
PAYROLL ADDITIVE	\$ _____												
MISCELLANEOUS COSTS	\$ _____												
GRAND TOTAL	\$ <u>1,785.00</u>												

FIELD INSPECTOR'S DIARY REFERENCE (INSPECTION ONLY): BOOK NO.: _____ PAGE NO.: _____ THRU PAGE NO.: _____	NUMBER OF BILLING _____ <small>Indicator number of billing. Initial billing to include copy of documentation. When final, indicate number with word final.</small>
--	---

APPLICATION REVIEW/ PERMIT INSPECTION COSTS

CENTRAL OFFICE USE ONLY

- HIGHWAY OCCUPANCY PERMIT
- BRIDGE OCCUPANCY LICENSE
- APPLICATION REVIEW

PLEASE PRINT LEGIBLY

PAY PERIOD ENDING _____

NAME OF APPLICANT/PERMITEE <i>East Goshen Mem</i>		INSPECTOR <input type="checkbox"/> DEPARTMENT <input checked="" type="checkbox"/> CONSULTANT	APPLICATION/PERMIT/LICENSE NUMBER <i>06080224</i>
APPLICANT/PERMITEE ADDRESS <i>1580 Paoli PK</i>		STATE ROUTE - SEGMENT - OFFSET <i>2014-0060/0030</i>	ORG
CITY <i>West Chester</i>		BOROUGH OR (TOWNSHIP) <i>East Goshen Twp</i>	COUNTY <i>Chester</i>
STATE <i>Pa</i>	ZIP CODE <i>19380</i>	REVIEWER'S/INSPECTOR'S NAME <i>Frank DiMichele</i>	STATE PROJECT NUMBER

DATE	MILEAGE			SUBSISTENCE		TIME			SUB TOTAL	ACKNOWLEDGEMENT
	MILES	RATE	AMOUNT	PAID FOR	AMOUNT	HOURS	RATE	AMOUNT		
<i>4/8 18</i>		<i>0.565</i>				<i>3</i>	<i>\$54.30</i>			<i>X</i>
<i>4/9 18</i>		<i>0.565</i>				<i>3</i>	<i>\$54.30</i>			
<i>4/10 18</i>		<i>0.565</i>				<i>3</i>	<i>\$54.30</i>			
<i>4/11 18</i>		<i>0.565</i>				<i>3</i>	<i>\$54.30</i>			
<i>4/12 18</i>		<i>0.565</i>				<i>3</i>	<i>\$54.30</i>			
<i>4/15 18</i>		<i>0.565</i>				<i>3</i>	<i>\$54.30</i>			
<i>4/16 18</i>		<i>0.565</i>				<i>3</i>	<i>\$54.30</i>			
<i>4/17 18</i>		<i>0.565</i>				<i>3</i>	<i>\$54.30</i>			
<i>4/18 18</i>		<i>0.565</i>				<i>4</i>	<i>\$54.30</i>			
<i>4/19 18</i>		<i>0.565</i>				<i>3</i>	<i>\$54.30</i>			
		<i>0.565</i>					<i>\$54.30</i>			
		<i>0.565</i>					<i>\$54.30</i>			
		<i>0.565</i>					<i>\$54.30</i>			
		<i>0.565</i>					<i>\$54.30</i>			
		<i>0.565</i>					<i>\$54.30</i>			
		<i>0.565</i>					<i>\$54.30</i>			
		<i>0.565</i>					<i>\$54.30</i>			
SUBTOTALS										

A PAYROLL ADDITIVE OF _____ % WILL BE ADDED TO ALL DEPARTMENT SALARIES.	TOTAL MILEAGE AMOUNT	\$ _____
	TOTAL SUBSISTENCE	\$ _____
	TOTAL SALARY AMOUNT	\$ _____
	PAYROLL ADDITIVE	\$ _____
	MISCELLANEOUS COSTS	\$ _____
	GRAND TOTAL	\$ _____

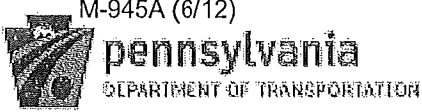
FIELD INSPECTOR'S DIARY REFERENCE (INSPECTION ONLY): BOOK NO.: _____ PAGE NO.: _____ THRU PAGE NO.: _____	NUMBER OF BILLING _____ Indicator number of billing. Initial billing to include copy of documentation. When final, indicate number with word final.
--	--

Highway Occupancy Permit		Permit No. 06080224
Name and Address of Permittee: East Goshen Municipal Authority 1580 Paoli Pike West Chester, PA 19380	County: Chester	Issue Date: 8/16/2012
	County Contact Number: (484) 340-3220	Expiration Date: 8/16/2013
	Issuing District Office: 06	Application Number: 15627
	District Contact Number: (610) 205-6795	Account Number:
	Municipalities: EAST GOSHEN Township	Permit Fee: 0.00

Immediately upon completion of the work Permittee shall notify the permit office where application was made. Subject to all the conditions, restrictions, and regulations prescribed by the Pennsylvania Department of Transportation, (see in particular 67 Pa. Code, Chapter 212, 441 and 459 and State Highway Law, 36 P.S. Section 670 - 411, 420 and 421) and subject to the plans, special conditions, or restrictions herein set forth or attached hereto. This permit shall be located at the work site and shall be available for inspection by any police officer or Department representative.

Location and Description of Work		Permit No. 06080224
1 of 2	State Route #: 2014 Segment(s): From 0060 To 0060 Offset(s): From 0030 To 0533	641: Install Sub-surface Sewer Facility at
2 of 2	State Route #: 2020 Segment(s): From 0170 To 0170 Offset(s): From 0050 To 0050	641: Install Sub-surface Sewer Facility at

Permit Conditions		Permit No. 06080224
1 of 12	PERMITTEE IS RESPONSIBLE FOR ENSURING THAT MUD, SILT AND OTHER DEBRIS IS REMOVED FROM VEHICLES AND TIRES (BY POWER WASH, ETC.) BEFORE ENTERING ONTO THE HIGHWAY.	
2 of 12	BEFORE DETOUR IS SET UP, PERMITTEE MUST NOTIFY NEWS MEDIA, EMERGENCY SERVICES, AND AFFECTED SCHOOL DISTRICTS.	
3 of 12	NO LANES MAY BE RESTRICTED BETWEEN THE HOURS OF 6:00 AM TO 9:00 AM OR BETWEEN THE HOURS OF 3:00 PM TO 6:00 PM.	
4 of 12	ALL DISTURBED AREAS OUTSIDE THE PAVEMENT OR SHOULDER SHALL BE RESTORED TO A CONDITION AT LEAST EQUAL TO THAT WHICH EXISTED BEFORE THE START OF WORK.	
5 of 12	DEPARTMENT PERSONNEL WILL BE AVAILABLE FOR PRE-BID MEETING WITH ADVANCE NOTIFICATION.	
6 of 12	DEPARTMENT MUST BE NOTIFIED IN WRITING TWO WEEKS IN ADVANCE OF PRE-CONSTRUCTION MEETING.	
7 of 12	AN INSPECTOR, WHEN AVAILABLE, WILL BE ASSIGNED ON MORE THAN A SPOT INSPECTION BASIS. PERMITTEE WILL BE CHARGED ALL INSPECTION COSTS INCURRED BY THE DEPARTMENT.	
8 of 12	CONTACT COUNTY PERMIT INSPECTOR AT LEAST 3 WORK DAYS PRIOR TO START OF WORK AT 484-340-3220.	
9 of 12	Approved by Manny with the comments on the marked up detour plan	
10 of 12	CONTRACTOR MUST NOTIFY THE PENNDOT PRESS OFFICE AT 610 205-6797 A MINIMUM OF 2 WEEKS PRIOR TO START OF DETOUR. PLEASE CONTACT DAN WEHNER, SPECIAL HAULING SUPERVISOR @ 610 205-6787 AT LEAST 10 WORKING DAYS PRIOR TO START OF DETOUR.	
11 of 12	CONTRACTOR MUST NOTIFY THE PENNDOT PRESS OFFICE AT 610 205-6797 A MINIMUM OF FOUR WORKING DAYS PRIOR TO THE CLOSING OF TRAVEL LANE(S) ONLY. CHAPTER 459.8(M)(3) STATES; A MANHOLE, INCLUDING THOSE CAST-IN-PLACE, SHALL BE CONSTRUCTED IN COMPLIANCE WITH CURRENT INDUSTRY STANDARDS AND SECTION 713.2(C) OF PUB 408.	



Permit Conditions		Permit No. 06080224
12 of 12	OPEN CUT INSTALLATION OF NEW 8" PVC SANITARY SEWER PIPE ALONG SHOULDER AND ACROSS ROADWAY @ APPROX SR 2014 SEG 0060 OFFSET 0533. JACK AND BORE TRENCHLESS INSTALLATION OF NEW 8" PVC SANITARY SEWER PIPE ACROSS ROAD @ APPROX. SEG 0050	

Acknowledgement of Completion Permit work has been completed: Date: _____ By: _____	_____ Barry J Schoch, P.E. Secretary of Transportation
	_____ Lester C. Toaso District Executive

Application and Certificate for Payment

TO OWNER: PROJECT: Marydeil Pump Station
 East Goshen Municipal Authority Division
FROM CONTRACTOR: VIA ARCHITECT:
 Ply-Mar Construction Co., Inc.
 965 Plymouth Road
 Plymouth Meeting, PA 19462

APPLICATION NO: 3
PERIOD TO: 5/28/13
CONTRACT FOR: Sewer Construction
CONTRACT DATE: 3/15/13
PROJECT NOS: MPS-2013

Distribution to:
 OWNER
 ARCHITECT
 CONTRACTOR
 FIELD
 OTHER

CONTRACTOR'S APPLICATION FOR PAYMENT

Application is made for payment, as shown below, in connection with the Contract AIA Document G703™, Continuation Sheet, is attached.

1. ORIGINAL CONTRACT SUM \$ 229,835.00
 2. NET CHANGE BY CHANGE ORDERS \$ 1,360.00
 3. CONTRACT SUM TO DATE (Line 1 + 2) \$ 231,195.00
 4. TOTAL COMPLETED & STORED TO DATE (Column G on G703) \$ 158,960.00

5. RETAINAGE:
 a. 5 % of Completed Work (Columns D + E on G703) \$ 7,948.00
 b. 0 % of Stored Material (Column F on G703) \$ 0.00

Total Retainage (Lines 5a + 5b, or Total in Column I of G703) \$ 7,948.00

6. TOTAL EARNED LESS RETAINAGE \$ 151,012.00
 (Line 4 minus Line 5 Total)

7. LESS PREVIOUS CERTIFICATES FOR PAYMENT \$ 100,404.00
 (Line 6 from prior Certificate)

8. CURRENT PAYMENT DUE \$ 50,608.00

9. BALANCE TO FINISH, INCLUDING RETAINAGE \$ 80,183.00
 (Line 3 minus Line 6)

AMOUNT CERTIFIED \$ 50,608.00
 (Attach explanation if amount certified differs from the amount applied. Initial all figures on this Application and on the Continuation Sheet that are changed to conform with the amount certified.)

CHANGE ORDER SUMMARY	ADDITIONS	DEDUCTIONS
Total changes approved in previous months by Owner	\$ 0.00	\$ 0.00
Total approved this month	\$ 1,360.00	\$ 0.00
TOTAL	\$ 1,360.00	\$ 0.00
NET CHANGES by Change Order	\$ 1,360.00	

The undersigned Contractor certifies that to the best of the Contractor's knowledge, information and belief the Work covered by this Application for Payment has been completed in accordance with the Contract Documents, that all amounts have been paid by the Contractor for Work for which previous Certificates for Payment were issued and payments received from the Owner, and that current payment shown herein is now due.

CONTRACTOR: Ply-Mar Construction Co., Inc.
 By: [Signature] Date: 6/14/13
 State of: PA
 County of: Montgomery

Subscribed and sworn to before me this 4th day of June 2013
 Notary Public: [Signature] Notarial Seal
 My commission expires: May 4, 2015 COMMONWEALTH OF PENNSYLVANIA
 Dana D. Conway, Notary Public
 Whitmarsh Twp., Montgomery County
 My Commission Expires May 4, 2015

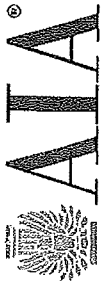
ARCHITECT'S CERTIFICATE FOR PAYMENT

In accordance with the Contract Documents, based on on-site observations and the data comprising this application, the Architect certifies to the Owner that to the best of the Architect's knowledge, information and belief the Work has progressed as indicated, the quality of the Work is in accordance with the Contract Documents, and the Contractor is entitled to payment of the AMOUNT CERTIFIED.

ARCHITECT: [Signature]
 By: [Signature] Date: 6/14/13

This Certificate is not negotiable. The AMOUNT CERTIFIED is payable only to the Contractor named herein. Issuance, payment and acceptance of payment are without prejudice to any rights of the Owner or Contractor under this Contract.

CAUTION: You should sign an original AIA Contract Document, on which this text appears in RED. An original assures that changes will not be obscured.



AIA Document G703™ - 1992

Continuation Sheet

AIA Document G702™-1992, Application and Certificate for Payment, or G732™-2009, Application and Certificate for Payment, Construction Manager as Adviser Edition, containing Contractor's signed certification is attached.
 In tabulations below, amounts are in US dollars.
 Use Column I on Contracts where variable retainage for line items may apply.

APPLICATION NO: 3
 APPLICATION DATE: 6/3/13
 PERIOD TO: 5/28/13
 ARCHITECT'S PROJECT NO: MP S - 2013

A ITEM NO.	B DESCRIPTION OF WORK	C SCHEDULED VALUE	D WORK COMPLETED		F MATERIALS PRESENTLY STORED (Not in D or E)	G TOTAL COMPLETED AND STORED TO DATE (D+E+F)	H BALANCE TO FINISH (G-C)	I RETAINAGE (if variable rate)
			FROM PREVIOUS APPLICATION (D + E)	THIS PERIOD				
1	Site Preparation (1 LS)	\$44,000.00	\$33,000.00	\$0.00		\$33,000.00	\$11,000.00	\$1,650.00
2	E & S Controls (1 LS)	\$3,000.00	\$1,000.00	\$0.00		\$1,000.00	\$2,000.00	\$50.00
3	8" Main in Paved Area (0-10') (296 LF)	\$31,080.00	\$21,000.00	\$0.00		\$21,000.00	\$10,080.00	\$1,050.00
4	8" Main Paved Area (10-15') (88 LF)	\$11,440.00	\$18,460.00	\$0.00		\$18,460.00	\$0.00	\$923.00
5	8" Main Un-Paved (0-10') (114 LF)	\$5,130.00	\$0.00	\$0.00		\$0.00	\$5,130.00	\$0.00
6	8" Main Un-Paved (10-15') (255 LF)	\$11,475.00	\$0.00	\$0.00		\$0.00	\$11,475.00	\$0.00
7	MH-6 to EXMH-201 (82 LF)	\$24,600.00	\$24,600.00	\$0.00		\$24,600.00	\$0.00	\$1,230.00
8	J & B Boot Road (118 LF)	\$27,140.00	\$0.00	\$26,220.00		\$26,220.00	\$920.00	\$1,311.00
9	Manhole (0-10') (3 EA)	\$9,000.00	\$6,000.00	\$0.00		\$6,000.00	\$3,000.00	\$300.00
10	Manhole (10-15') (2 EA)	\$7,000.00	\$3,500.00	\$0.00		\$7,000.00	\$0.00	\$350.00
11	4" Service Lateral (1 EA)	\$1,000.00	\$0.00	\$0.00		\$0.00	\$1,000.00	\$0.00
12	Low Pressure Sewer Lat. (1 LS)	\$1,000.00	\$0.00	\$0.00		\$0.00	\$1,000.00	\$0.00
13	Full Depth Paving (275 SY)	\$22,000.00	\$0.00	\$12,760.00		\$12,760.00	\$9,240.00	\$638.00
14	Demo Pump Station (1 LS)	\$6,500.00	\$0.00	\$0.00		\$0.00	\$6,500.00	\$0.00
15	Traffic Maintenance (1 LS)	\$2,000.00	\$0.00	\$0.00		\$0.00	\$2,000.00	\$0.00
16	Mill & Overlay Paoli Pike (75 SY)	\$2,250.00	\$0.00	\$0.00		\$0.00	\$2,250.00	\$0.00
17	Curb Replacement (30 LF)	\$1,500.00	\$0.00	\$0.00		\$0.00	\$1,500.00	\$0.00
18	Misc Exc. & 2A Backfill (20 CY)	\$1,200.00	\$0.00	\$0.00		\$0.00	\$1,200.00	\$0.00
19	Misc. Exc. & Soil Backfill (20 CY)	\$600.00	\$0.00	\$1,560.00		\$1,560.00	\$0.00	\$78.00
20	Concrete Encasement (20 LF)	\$1,000.00	\$0.00	\$0.00		\$0.00	\$1,000.00	\$0.00
21	Mill & Overlay Paoli Pike (455 SY)	\$10,920.00	\$0.00	\$0.00		\$0.00	\$10,920.00	\$0.00
22	Soft Dig Test Pits (3 EA)	\$6,000.00	\$4,000.00	\$2,000.00		\$6,000.00	\$0.00	\$300.00
23	CO#1 U-Drain (68 LF)	\$1,360.00	\$0.00	\$1,360.00		\$1,360.00	\$0.00	\$68.00
	GRAND TOTAL	\$231,195.00	\$111,560.00	\$47,400.00		\$158,960.00	\$80,215.00	\$7,948.00

CAUTION: You should sign an original AIA Contract Document, on which this text appears in RED. An original assures that changes will not be obscured.

AIA Document G703™ - 1992. Copyright © 1993, 1995, 1996, 1997, 1970, 1978, 1983 and 1992 by The American Institute of Architects. All rights reserved. This AIA Document is protected by U.S. Copyright Law and International Treaties. Unauthorized reproduction or distribution of this AIA Document, or any portion of it, may result in severe civil and criminal penalties, and will be prosecuted to the maximum extent possible under the law. Purchasers are permitted to reproduce ten (10) copies of this document when completed. To report copyright violations of AIA Contract Documents, e-mail: The American Institute of Architects' legal counsel, copyright@aia.org.

CONTRACT CHANGE ORDER

CONTRACT NO.:	<u>MPS-2013</u>	DATE:	<u>6-Jun-13</u>
	<u>Marydell Pump Station Diversion</u>	PROJECT NO.:	<u>EGMA 1305</u>
CHANGE ORDER NO.:	<u>1</u>	LOCATION:	<u>East Goshen Mun. Auth.</u>
TO: (Contractor)	<u>Ply-Mar Construction Co., Inc.</u>		<u>Chester County, Pennsylvania</u>

You are hereby requested to comply with the following changes from the contract plans and specifications.

ITEM NO. (1)	DESCRIPTION OF CHANGES, QUANTITIES, UNITS, UNIT PRICES, CHANGES IN COMPLETION SCHEDULE, ETC. (2)	DECREASE IN CONTRACT PRICE (3)	INCREASE IN CONTRACT PRICE (4)
1	Furnish and install replacement 4-inch diameter perforated PVC underdrain pipe along shoulder of Paoli Pike. (68 L.F. @ \$20.00/L.F. = \$1,360.00)		\$1,360.00
CHANGE IN CONTRACT PRICE DUE TO THIS CHANGE ORDER			
TOTAL DECREASE		\$0.00	
TOTAL INCREASE			\$1,360.00
NET (INCREASE/DECREASE) CONTRACT PRICE (DIFFERENCE BETWEEN COL. (3) AND (4))			\$1,360.00

The sum of \$1,360.00 is hereby added to the total contract price, and the total adjusted contract price to date is thereby \$231,195.00

The time provided for completion in the contract is unchanged.
This document shall become an amendment to the contract and all provisions of the contract will apply hereto.

Accepted by:

Contractor _____ Date _____

Recommended by:

Mj Eli

Engineer _____ Date 6/6/13

Approved by:

Owner _____ Date _____

Rick Smith

From: Michael Ellis <MEllis@Pennoni.com>
Sent: Thursday, June 06, 2013 10:00 AM
To: rsmith@eastgoshen.org
Cc: Daniel Barbato
Subject: Marydell PS - Pay Application #3 and Change Order #1
Attachments: Pay Application #3.pdf; MPS Change Order #1.pdf; Re: Sunoco gas main excavation payment (8.26 KB)

Rick,

Payment Application #3 is attached. We recommend payment in the amount of \$50,608.00 as certified on the application. A description of line items in this payment follows:

- Item 8: 120 LF of jack and boring casing was installed (six 20' long sticks of casing pipe) instead of the 118 LF in the bid. We recommend withholding 5% from payment of this line item (in addition to 5% retainage) until the sewer is tested. $120 \text{ LF} \times \$230/\text{LF} = \$27,600 \times 95\% = \$26,220$.
- Item 10: Manhole MH-3 was installed.
- Item 13: Ply-Mar has installed the base course of paving along the trench in the shoulder of Paoli Pike and in the trench on Saratoga Drive. They have not yet installed the wearing course on Paoli Pike. They have installed the wearing course on Saratoga Drive, but they are not yet requesting payment for wearing course. Since the pay item is for the full-depth of the pavement, including both base course and wearing course paving, we have agreed to pay Ply-Mar a percentage as follows. They have installed a total of 191 SY of base course paving to-date (163 SY along Paoli Pike and 28 SY on Saratoga Drive). The unit price bid for Full Depth Paving was \$80/SY. Ply-Mar proposes the wearing course is \$13.20/SY of that unit price, and we are not opposed to that breakdown. The base course is therefore considered to be \$66.80/SY. $191 \text{ SY} \times \$66.80/\text{SY} \approx \$12,760$.
- Item 19: There was approx. 52 CY (4 dump trucks at 13 CY/truck) of Miscellaneous Excavation and Soil Backfill for the Sunoco gas mains jack & boring observation pit. $52 \text{ CY} \times \$30/\text{CY} = \$1,560$.
- Item 22: Soft (vacuum) digging was performed in the Sunoco gas mains jack & boring observation pit from the top of the gas mains to approx. 4 ft below the gas mains. We agreed to consider this as 1 EA of soft digging. $1 \text{ EA} \times \$2,000/\text{EA} = \$2,000$.
- Item 23: Change Order #1. 68 LF of underdrain pipe was installed to replace existing pipe along Paoli Pike as required by PennDOT.

Proposed Change Order #1 is attached for consideration and approval by the Authority. Ply-Mar has agreed to this reduced price; they had initially proposed \$25/LF of underdrain pipe. I will have Ply-Mar sign the form before Monday's meeting. This Change Order should be approved before Payment #3 since the change order work is recommended for full payment.

Lastly, to provide the Authority a heads up, I've attached an email from Ply-Mar with additional costs associated with the Sunoco gas main conflicts. They are requesting \$6,055.00 additional. I have directed them to provide supporting documentation, such as subcontractor and material invoices and specific days of

extra labor, to substantiate these costs before we prepare a formal Change Order #2. We intend to provide Change Order #2 for consideration at the July Authority meeting.

Mike

Michael J. Ellis, PE

Pennoni Associates Inc.

Christiana Executive Campus
121 Continental Drive, Suite 207
Newark, DE 19713-4310

Office 302-655-4451 x5236 | Direct 302-351-5236

Fax 302-654-2895 | Mobile 302-561-4235

<http://www.pennoni.com> | mellis@pennoni.com

Consulting Engineers providing...

Environmental → C Geotechnical → C Inspection & Testing → C Land Development → C MEP
Landscape Architecture → C Structural → C Survey → C Transportation → C Water/Wastewater

Memo

To: Municipal Authority
From: Jon Altshul
Re: MA May Financial Report
Date: June 6, 2013

The Municipal Authority recorded \$122,852.36 in expenses and \$99,171.78 in revenues (primarily from transfers from the Sewer Capital Reserve and Sewer Operating funds) in the month of May, a difference of -\$23,680.58 (in a strangely symmetric twist, the net income in April was +\$23,600.58). The fund balance is now \$49,283.73.

A complete list of all monthly expenses is provided.

EAST GOSHEN TOWNSHIP
 1580 PAOLI PIKE
 WEST CHESTER, PA
 Municipal Authority
 May 2013

Account Title	Acct #	Annual Budget	Month To Date Actual	Year To Date Actual
MUNICIPAL AUTHORITY BEGINNING FUND BALANCE			72,964.31	
RCSTP BUDGET				
REVENUE				
INTEREST EARNED - RCSTP EXPANSION	07341 1020	50.00	22.26	35.11
GRANT REVENUE	07392 0800	0.00	0.00	0.00
TOTAL REVENUE		50.00	22.26	35.11
EXPENSES				
R.C.-CAP. PROJ.-ENGINEER	07424 7451	0.00	0.00	0.00
R.C. CAP EXPANSION GEN'L CONTRACTOR	07424 7452	0.00	0.00	0.00
R.C. CAP EXPANSION - ELECTRICAL	07424 7453	0.00	0.00	0.00
R.C. CAP EXP CONTINGENCY CAPITAL	07424 7454	0.00	0.00	0.00
R.C. CAP EXP CONTINGENCY ONGOING	07424 7455	0.00	0.00	0.00
R.C. CAP EXP ADDITIONAL CONTINGENCY	07424 7456	0.00	0.00	0.00
TRANSFER TO AUTHORITY CAP FUND	07492 0990	992,470.00	0.00	0.00
TOTAL EXPENSES		992,470.00	0.00	0.00
RCSTP NET RESULT		(992,420.00)	22.26	35.11

EAST GOSHEN TOWNSHIP
 1580 PAOLI PIKE
 WEST CHESTER, PA
 Municipal Authority
 May 2013

Account Title	Acct #	Annual Budget	Month To Date Actual	Year To Date Actual
OPERATING BUDGET				
REVENUE				
INTEREST EARNINGS	07341 1000	50.00	1.52	12.46
C.C. TAPPING FEES	07364 1100	128,000.00	0.00	0.00
R.C.TAPPING FEES	07364 1110	2,000.00	7,148.00	11,148.00
CONNECTION FEES - SEWER	07364 1130	0.00	0.00	1,689.64
MISCELLANEOUS REVENUE	07380 1000	1,000.00	0.00	423.36
TRANSFER FROM SEWER OPERATING	07392 0500	121,696.00	39,000.00	39,000.00
TOTAL REVENUE		252,746.00	46,149.52	52,273.46
EXPENSES				
ADMINISTRATIVE WAGES	07424 1400	33,547.00	0.00	7,980.36
MISCELLANEOUS EXPENSE	07424 3000	5,000.00	0.00	1,450.00
MUNIC.AUTH.-AUDITING	07424 3110	8,843.00	0.00	0.00
ENGINEERING SERVICES	07424 3130	35,000.00	8,215.25	25,274.75
LEGAL SERVICES	07424 3140	7,000.00	3,364.00	9,721.02
M.C.-DVRFA-DEBT SERVICE	07471 1000	20,720.00	0.00	0.00
M.C.-DVRFA-INTEREST PAYMN	07472 1000	6,003.00	0.00	0.00
M.C.-DVRFA-INTEREST PAYMN	07472 1010	5,583.00	0.00	0.00
TOTAL EXPENSES		121,696.00	11,579.25	44,426.13
OPERATING NET RESULT		131,050.00	34,570.27	7,847.33

EAST GOSHEN TOWNSHIP
 1580 PAOLI PIKE
 WEST CHESTER, PA
 Municipal Authority
 May 2013

Account Title	Acct #	Annual Budget	Month To Date Actual	Year To Date Actual
CAPITAL BUDGET				
REVENUE				
LOAN PROCEEDS-SEWER PROJECT	07392 0804	992,470.00	0.00	0.00
TRANSFER FROM SEWER CAP RESERVE	07392 0900	556,769.00	53,000.00	193,000.00
TOTAL REVENUE		1,549,239.00	53,000.00	193,000.00
EXPENSES				
MARYDELL PUMP STATION - ENGINEER	07425 1000	25,000.00	11,257.21	31,770.46
MARYDELL PUMP STATION -CONSTRUCTION	07425 2000	170,000.00	79,704.00	102,755.35
LOCHWOOD ABANDONMENT ENGINEER	07424 7475	0.00	47.50	1,133.50
LOCHWOOD ABANDONMENT CONSTRUCTION	07424 7476	55,769.00	14,106.40	45,121.41
LOCHWOOD ELIMINATION PHASE 2	07424 7477	0.00	0.00	2,094.91
HERSHEY MILL STATION - ENGINEER	07426 1000	25,000.00	1,539.75	15,479.74
HERSHEY MILL STATION - CONSTRUCTION	07426 2000	46,000.00	0.00	0.00
RESERVE PUMP STATION - ENGINEER	07427 1000	25,000.00	4,618.25	15,127.76
RESERVE PUMP STATION - CONSTRUCTION	07427 2000	93,000.00	0.00	0.00
RESERVOIR PUMP STATION - ENGINEER	07428 1000	0.00	0.00	0.00
RESERVOIR PUMP STATION CONSTRUCTION	07428 2000	0.00	0.00	0.00
TOTAL EXPENSES		439,769.00	111,273.11	213,483.13
CAPITAL NET RESULT		1,109,470.00	(58,273.11)	(20,483.13)
MUNICIPAL AUTHORITY ENDING FUND BALANCE			49,283.73	

MGRP18 run by BRIAN 9 : 49 AM

Acct #	Per	Src	Trx #	Debits	Credits	Beg/End Bal	Date	Check/Ref #	ID #	Name/Description
07341-1000						0.00				
			INTEREST EARNINGS							
			1301 JE 36010		0.74		02/05/13	INTEREST		INTEREST EARNED JANUARY 2013 07 FUND
				0.00	0.74	-0.74				
			1302 36396		0.48		03/04/13	INTEREST		INTEREST EARNED FEB. 2013 07 FUND
				0.00	0.48	-1.22				
			1303 36759		0.92		04/02/13	INTEREST		INTEREST EARNED MARCH 2013 07 FUND
				0.00	0.92	-2.14				
			1304 37177		3.20		05/01/13	INTEREST		INTEREST EARNED APRIL 2013 07100.1000
			37178		5.60		05/01/13	INTEREST		INTEREST EARNED APRIL 2013 07 CONSTRUCTION FUND
				0.00	8.80	-10.94				
			1305 37710		1.52		06/04/13	INTEREST		INTEREST EARNED MAY 2013 07 FUND
				0.00	1.52	-12.46				
				0.00	12.46	-12.46				
07341-1020						0.00				
			INTEREST EARNED - RCSTP EXPANSION							
			1301 36011		3.97		02/05/13	INTEREST		INTEREST EARNED JANUARY 2013 07 CONSTRUCTION FUND
				0.00	3.97	-3.97				
			1302 36397		4.91		03/04/13	INTEREST		INTEREST EARNED FEB. 2013 07 CONSTRUCTION FUND
				0.00	4.91	-8.88				
			1303 36760		3.97		04/02/13	INTEREST		INTEREST EARNED MARCH 2013 07 CONSTRUCTION FUND
				0.00	3.97	-12.85				
			1305 37711		22.26		06/04/13	INTEREST		INTEREST EARNED MAY 2013 07 CONSTRUCTION FUND
				0.00	22.26	-35.11				
				0.00	35.11	-35.11				
07364-1100						0.00				
			C.C. TAPPING FEES							
			CR 37610	3,600.00	3,600.00		05/29/13	94 22	4518 1	CHESTER SPRINGS DEVELOPMENT CO
				3,600.00	3,600.00	0.00				

MGRP18 run by BRIAN 9 : 49 AM

Acct #	Per	Src	Trx #	Debits	Credits	Beg/End Bal	Date	Check/Ref #	ID #	Name/Description
				3,600.00	3,600.00	0.00				
07364-1110			R.C.TAPPING FEES			0.00				
	1301	JE	35931	2,000.00			01/30/13	REV TRX		REVERSE TRX #32779 TAP IN FEE FOR 913 SORRELL HILL
			35934		2,000.00		01/30/13	REV TRX		RE-REVERSE TRX 35931 FOR 913 SORRELL HILL TAP IN FEES
				2,000.00	2,000.00	0.00				
	1303	RE	36430		2,000.00		03/05/13	36430 1		TAP IN FEE - 916 SORRELL HILL
			36431		2,000.00		03/05/13	36431 1		TAP IN FEE - 911 SORRELL HILL
				0.00	4,000.00	-4,000.00				
	1305		37562		7,148.00		05/23/13	37562 1		TAP IN FEE FOR 1598 WINEBERRY
				0.00	7,148.00	-11,148.00				
				2,000.00	13,148.00	-11,148.00				
07364-1130			CONNECTION FEES - SEWER			0.00				
	1302	CR	36075		423.00		02/08/13	264	7195	1 JACOBS, ROBERT & CHERYL
					423.00		02/08/13	755	7193	1 GEORGE SMITH & CHRISTINA CONLE
			***	0.00	846.00	***				
			36147		423.00		02/13/13	11	6577	1 PAPPANO, JOSEPH & PATRICIA
					421.00		02/13/13	11	7196	1 PAPPANO, JOSEPH & PATRICIA
			***	0.00	844.00	***				
			36193		423.00		02/15/13	2173	7194	1 STOFFLET, MICHAEL
	JE		36174	282.24			02/14/13	PINE ROCK		ANNUAL PINE ROCK INSTALLMENT
			36194	141.12			02/15/13	PINE ROCK		ANNUAL PINE ROCK INSTALLMENT
				423.36	2,113.00	-1,689.64				
				423.36	2,113.00	-1,689.64				
07380-1000			MISCELLANEOUS REVENUE			0.00				
			36174		282.24		02/14/13	PINE ROCK		ANNUAL PINE ROCK INSTALLMENT
			36194		141.12		02/15/13	PINE ROCK		ANNUAL PINE ROCK INSTALLMENT
				0.00	423.36	-423.36				
				0.00	423.36	-423.36				
07392-0500			TRANSFER FROM SEWER OPERATING			0.00				
	1305		37366		39,000.00		05/14/13	DEPOSIT		DEPOSIT FUNDS FROM SEWER TO MA TO COVER OPERATING EXPENSE
				0.00	39,000.00	-39,000.00				
				0.00	39,000.00	-39,000.00				

MGRP18 run by BRIAN 9 : 49 AM

Acct #	Per	Src Trx #	Debits	Credits	Beg/End Bal	Date	Check/Ref #	ID #	Name/Description
07392-0900					0.00				
	1302	36187		30,000.00		02/15/13	XFER		XFER \$ FROM 9100.1000 TO 7100.1000 TO COVER MA EXPENSES
			0.00	30,000.00	-30,000.00				
	1304	36841		50,000.00		04/08/13	XFER		XFER \$ FROM 9100.1000 TO 7100.1000
		36905		60,000.00		04/11/13	XFER		XFER \$ FROM 9100.1000 TO 7100.1000
			0.00	110,000.00	-140,000.00				
	1305	37361		53,000.00		05/14/13	XFER		XFER FUNDS FROM 9100.1000 TO 7100.1000 TO COVER CAP.EXP.
			0.00	53,000.00	-193,000.00				
			0.00	193,000.00	-193,000.00				
07424-1400					0.00				
	1303 CD	36711	7,980.36			03/28/13	2166	425	EAST GOSHEN TOWNSHIP 1ST QTR.2013 REIMBURSMNT TO GENE FUND
			7,980.36	0.00	7,980.36				
			7,980.36	0.00	7,980.36				
07424-3000					0.00				
	1301	35598	500.00			01/03/13	2153	2737	DEP - COMMONWEALTH OF PA NPDES PERMIT - 2013 MINOR SEWAGE FACILITY
		35783	950.00			01/18/13	2158	2132	PENNSYLVANIA MUNICIPAL AUTHORITIES ASSOC 2013 ACTIVE MEMBERSHIP DUES
			1,450.00	0.00	1,450.00				
			1,450.00	0.00	1,450.00				
07424-3130					0.00				
		35695	3,264.75			01/15/13	2156	1052	PENNONI ASSOCIATES INC. SERV.THRU 12/9/12 2012 GEN.SERV
			3,264.75	0.00	3,264.75				
	1302	36119	1,538.75			02/12/13	2162	1052	PENNONI ASSOCIATES INC. SERV.THRU 1/13/13 GEN.SERVICES 2
			1,538.75	0.00	4,803.50				
	1304	36889	6,695.25			04/10/13	2171	1052	PENNONI ASSOCIATES INC. SERVICES THRU 3/17/13 GENERAL SE
		36890	5,560.75			04/10/13	2173	1052	PENNONI ASSOCIATES INC. SERVICE THRU 2/20/13 GENERAL SER

MGRP18 run by BRIAN 9 : 49 AM

Acct #	Per	Src	Trx #	Debits	Credits	Beg/End Bal	Date	Check/Ref #	ID #	Name/Description
				12,256.00	0.00	17,059.50				
1305		37357		8,215.25			05/14/13	2175	1052	PENNONI ASSOCIATES INC. SERV.THRU 4/14/13 GENERAL SERVIC
				8,215.25	0.00	25,274.75				
				25,274.75	0.00	25,274.75				
07424-3140			LEGAL SERVICES			0.00				
1301		35695		3,289.10			01/15/13	2155	528	GAWTHROP GREENWOOD & HALSTED LEGAL SERV. 11/9-11/30/12 GEN.AU
				3,289.10	0.00	3,289.10				
1302		36119		1,406.80			02/12/13	2161	528	GAWTHROP GREENWOOD & HALSTED LEGAL SERVICE - JAN. 2013 GEN.AU
				1,406.80	0.00	4,695.90				
1304		36889		1,661.12			04/10/13	2170	528	GAWTHROP GREENWOOD & HALSTED LEGAL SERVICES 2/4-2/25/13 GEN.A
				1,661.12	0.00	6,357.02				
1305		37357		3,364.00			05/14/13	2174	528	GAWTHROP GREENWOOD & HALSTED LEGAL SERVICES 3/7-3/25/13 GEN.A
				3,364.00	0.00	9,721.02				
				9,721.02	0.00	9,721.02				
07424-7475			LOCHWOOD ABANDONMENT ENGINEER			0.00				
1301		35695		511.50			01/15/13	2156	1052	PENNONI ASSOCIATES INC. SERVICES THRU 12/9/12 HERSHEY M PUMP STATION MUFFIN MONSTER
				511.50	0.00	511.50				
1302		36119		574.50			02/12/13	2162	1052	PENNONI ASSOCIATES INC. SERV.THRU 1/13/13 H.MILL PS MUF MONSTER DESIGN
				574.50	0.00	1,086.00				
1305		37357		47.50			05/14/13	2175	1052	PENNONI ASSOCIATES INC. SERV.THRU 4/14/13 H.MILL PS MUFF MONSTER'
				47.50	0.00	1,133.50				
				1,133.50	0.00	1,133.50				
07424-7476			LOCHWOOD ABANDONMENT CONSTRUCTION			0.00				
1301		35598		246.01			01/03/13	2152	317	CONTRACTOR'S CHOICE ORANGE SAFETY FENCE, STAKES & PA

MGRP18 run by BRIAN 9 : 49 AM

Acct #	Per	Src	Trx #	Debits	Credits	Beg/End Bal	Date	Check/Ref #	ID #	Name/Description
07424-7476	1301	CD	35695	1,482.40			01/15/13	2154	425	EAST GOSHEN TOWNSHIP LOCHWOOD PLANT CLOSING COSTS-LAB
			35698	-1,482.40			01/15/13	2154	425	EAST GOSHEN TOWNSHIP VOID CK. 2154 - DUPLICATE PAYMEN
				246.01	0.00	246.01				
1304		36840	30,769.00				04/08/13	2169	2128	JWC ENVIRONMENTAL CONTROLLER ASSEMBLY, HPP, & REP SUPPLIED EQUIPMENT
				30,769.00	0.00	31,015.01				
1305		37649	424.00				05/31/13	2180	489	FISHER & SON COMPANY INC 4 50LB BAGS - COMMERCIAL SEED
			111.65				05/31/13	2181	739	KNOX EQUIPMENT COMPANY MULCHER RENTAL 5/16-5/17/13
			5,560.00				05/31/13	2182	800	MACANGA INC. TRUCKS & TRACK HOE USE - HAUL DI FROM WESTTOWN WAY 5/13 & 5/14/13
			8,010.75				05/31/13	2183	1876	RANSOME RENTAL COMPANY LP STANDARD TRACK RENTAL 5/13-5/20/
		***	14,106.40		0.00 ***					
			14,106.40		0.00	45,121.41				
			45,121.41		0.00	45,121.41				
07424-7477		LOCHWOOD	ELIMINATION PHASE 2			0.00				
	1301		35872	379.90			01/24/13	2159	2762	A.J. BLOSENSKI INC. 30 YDS. ROLLOFF HAULING & LANDFI FEE
				379.90	0.00	379.90				
1302		36189	200.00				02/15/13	2165	2762	A.J. BLOSENSKI INC. 30 YARD ROLLOFF HAULING FEE
	JE		36105		379.90		02/11/13	VOID CHECK		VOID CK. 2159 - OVERCHARGED BY VENDOR - RETURNED CHECK
				200.00	379.90	200.00				
1303	CD	36711	1,894.91				03/28/13	2167	425	EAST GOSHEN TOWNSHIP 1/1-3/27/13 REIMBURSE GENERAL FU FOR LOCHWOOD PLANT CLOSING LABOR
				1,894.91	0.00	2,094.91				
			2,474.81		379.90	2,094.91				
07425-1000		MARYDELL	PUMP STATION - ENGINEER			0.00				
	1301		35695	5,493.75			01/15/13	2156	1052	PENNONI ASSOCIATES INC. SERVICES THRU 12/9/12 MARYDELL
				5,493.75	0.00	5,493.75				

MGRP18 run by BRIAN 9 : 49 AM

Acct #	Per	Src	Trx #	Debits	Credits	Beg/End Bal	Date	Check/Ref #	ID #	Name/Description
07425-1000	1302	CD	36119	5,988.75			02/12/13	2162	1052	PENNONI ASSOCIATES INC. SERV.THRU 1/13/13 MARYDELL PS
				5,988.75	0.00	11,482.50				
	1304		36889	6,863.00			04/10/13	2171	1052	PENNONI ASSOCIATES INC. SERVICES THRU 3/17/13 MARYDELL P
			36890	2,167.75			04/10/13	2173	1052	PENNONI ASSOCIATES INC. SERVICE THRU 2/20/13 MARYDELL
				9,030.75	0.00	20,513.25				
	1305		37357	7,168.00			05/14/13	2175	1052	PENNONI ASSOCIATES INC. SERV. THRU 4/14/13 MARYDELL PS
			37548	4,089.21			05/22/13	2178	3084	PA DEPARTMENT OF TRANSPORTATION MARY DELL DIVERSION INSPECTION
				11,257.21	0.00	31,770.46				
				31,770.46	0.00	31,770.46				
07425-2000						0.00				MARYDELL PUMP STATION -CONSTRUCTION
	1304		36746	2,351.35			04/01/13	2168	3050	PECO ENERGY TWO MAN PECO CREW- BRACE PECO PO
			36889	20,700.00			04/10/13	2172	3059	PLY-MAR CONSTRUCTION CO.INC. MARYDELL PUMP STATION DIVERSION
				23,051.35	0.00	23,051.35				
	1305		37357	79,704.00			05/14/13	2176	3059	PLY-MAR CONSTRUCTION CO.INC. APP.#2 MARYDELL PS DIVERSION
				79,704.00	0.00	102,755.35				
				102,755.35	0.00	102,755.35				
07426-1000						0.00				HERSHEY MILL STATION - ENGINEER
	1301		35695	2,047.12			01/15/13	2156	1052	PENNONI ASSOCIATES INC. SERV.THRU 12/9/12 HERSHEY MILL
			35783	250.00			01/18/13	2157	263	CHESTER COUNTY CONSERVATION DISTRICT PERMIT FEE - HERSHEY MILL DAM
				2,297.12	0.00	2,297.12				
	1302		36119	2,600.00			02/12/13	2160	2911	EARTHCORE SERVICES LLC MOBILIZATION ATV RIG-HMPS DIVERS
				2,932.62			02/12/13	2162	1052	PENNONI ASSOCIATES INC. SERV.THRU 1/13/13 HERSHEY MILL
			***	5,532.62	0.00	***				
				5,532.62	0.00	7,829.74				
	1304		36889	3,593.75			04/10/13	2171	1052	PENNONI ASSOCIATES INC. SERVICES THRU 3/17/13 HERSHEY MI
			36890	2,516.50			04/10/13	2173	1052	PENNONI ASSOCIATES INC. SERVICE THRU 2/20/13 HRSHEY MILL

MGRP18 run by BRIAN 9 : 49 AM

Acct #	Per	Src	Trx #	Debits	Credits	Beg/End Bal	Date	Check/Ref #	ID #	Name/Description
				6,110.25	0.00	13,939.99				
1305		37357		1,539.75			05/14/13	2175	1052	PENNONI ASSOCIATES INC. SERV. THRU 4/14/13 HERSHEY MILL
				1,539.75	0.00	15,479.74				
				15,479.74	0.00	15,479.74				
07427-1000			RESERVE PUMP STATION - ENGINEER			0.00				
1301		35695		2,047.13			01/15/13	2156	1052	PENNONI ASSOCIATES INC. SERV. THRU 12/9/12 RESERVE PS
				2,047.13	0.00	2,047.13				
1302		36119		2,932.63			02/12/13	2162	1052	PENNONI ASSOCIATES INC. SERV. THRU 1/13/13 RESERVE PS
				1,000.00			02/12/13	2163	3027	SCHRODER, JOHN SEWER RIGHT OF WAY
				1,000.00			02/12/13	2164	3029	WILLOW POND HOMEOWNERS ASSOCIATION SEWER RIGHT OF WAY
		***		4,932.63	0.00	***				
				4,932.63	0.00	6,979.76				
1304		36889		1,013.25			04/10/13	2171	1052	PENNONI ASSOCIATES INC. SERVICES THRU 3/17/13 RESERVE PU
		36890		2,516.50			04/10/13	2173	1052	PENNONI ASSOCIATES INC. SERVICE THRU 2/20/13 RESERVE PS
				3,529.75	0.00	10,509.51				
1305		37357		563.25			05/14/13	2175	1052	PENNONI ASSOCIATES INC. SERV. THRU 4/14/13 RESERVE PS
				1,455.00			05/14/13	2177	3075	SPRING MEADOWS HOMEOWNERS ASSOCIATION SEWER RIGHT OF WAY
		***		2,018.25	0.00	***				
		37649		2,600.00			05/31/13	2179	2911	EARTHCORE SERVICES LLC ATV RIG PROBES - 1 DAY
				4,618.25	0.00	15,127.76				
				15,127.76	0.00	15,127.76				
Beg Bal		0.00		264,312.52	251,711.83	12600.6900001				

JUNE 2013
EAST GOSHEN MUNICIPAL AUTHORITY GOALS

ON-GOING

1. Submit an article for each newsletter.
 - a. Need by 3/1/13 - **Jack**
 - b. Need by 6/1/13 - **Dana**
 - c. Need by 9/1/13
 - d. Need by 12/1/13
2. Attend West Goshen Meetings quarterly – more often if needed.
 - a. 1st Quarter (March) - **Ed**
 - b. 2nd Quarter (June) - Kevin
 - c. 3rd Quarter (September)
 - d. 4th Quarter (December)
3. Respond to capacity requests in 45 days or less.
4. Continue to implement I & I Plan - March Report distributed in May
5. Operate RCSTP in compliance with NPDES Permit - January, February, March, April, **May**

PROJECTS

1. Lockwood – Final Restoration – **Area within fence has been graded and seeded and the driveway has been removed.**
2. Marydell Pump Station – Construction – **Pipework is completed up to MH just before the PS.**
3. Hershey Mill Pump Station – Construction - Bid awarded, Notice to proceed issued. **Construction is completed, contractor need to address punch list.**
4. Reserve Pump Station – **We open bids on June 19.**
5. Borrowing – Reimburse Capital Reserve for design and construction funds. **We have done some preliminary work on the alternatives. Currently plan to borrow in July or August**



PENNONI ASSOCIATES INC.
CONSULTING ENGINEERS

June 6, 2013

Rick Smith, Township Manager
East Goshen Township
1580 Paoli Pike
West Chester, PA 19380

Re: Proposal for Professional Services
Reserve Pump Station Sanitary Sewer Diversion Construction Phase Services

Dear Mr. Smith:

Pennoni Associates Inc. is pleased to submit the following proposal for the construction phase services associated with the Reserve Pump Station (RPS) Sanitary Sewer Diversion.

BACKGROUND

The diversion project was initiated as a result of the *Township Wastewater Needs Evaluation*, dated April 16, 2007, which projected future flows through the Chester Creek Collection System (CCCS), a.k.a. West Goshen Service Area, will exceed the capacity limitation in the intermunicipal agreement between East Goshen and West Goshen. The intermunicipal agreement limits East Goshen's wastewater flow through the CCCS to a capacity of 1,000,000 gallons per day (gpd). The *Township Wastewater Needs Evaluation* determined that under potential future development, the flow through the CCCS may approach 1,300,000 gpd, which will exceed the current intermunicipal agreement and the available treatment capacity of the West Goshen Sewage Treatment Plant. By diverting the Hershey's Mill Pump Station and RPS from the CCCS to the Ridley Creek Collection System (RCCS) and the recently expanded Ridley Creek Sewage Treatment Plant (RCSTP), over 65,000 gpd of capacity can be made available under the intermunicipal agreement. Additionally, the development serviced by the RPS was proposed to have wastewater treated at the RCSTP in the Township's 1999 *Act 537 Plan Update*.

Following the *Township Wastewater Needs Evaluation*, Pennoni prepared the *Hershey Mill and Reserve Pump Station Special Study*, dated February 15, 2008. The study recommended diversion of both pump stations into the RCCS. Pennoni prepared the *Act 537 Plan Update Revision for the Hershey Mill and Reserve Pump Station Diversion*, last revised June 2010 with a partial supplemental submission to the PADEP on February 17, 2011, which was ultimately approved by the PADEP on June 6, 2011.

Pennoni then prepared the design documents, permit applications, and bid packages. The bid solicitation period began on May 17, 2013. Bids are due June 19, 2013, and a construction contract award is projected to occur on June 25, 2013.

The proposed RPS Sanitary Sewer Diversion consists of demolition of the existing pump station and construction of approximately 735 linear feet of 8-inch gravity sewers from the existing pump station through the property of 929 Forest Lane to an existing gravity sewer on the north side of Forest Lane. The sewer construction will involve one creek crossing.

SCOPE OF WORK

The scope of work for this phase of the project includes construction inspection and office support with specific details as follows.

Construction Inspection: Part-time construction inspection for critical construction activities including:

- Preconstruction meeting
- Tree removals and clearing
- Stakeout
- E&S controls installation including bypass pumping of the creek
- Dewatering
- Sanitary sewer and manhole installation and testing
- Connections to existing manholes
- Wastewater bypass pumping
- Demolition of the existing pump station structures and access drive
- Existing force main abandonment
- Restoration
- Final inspection

We have included a total of 150 hours of inspection time over the 90-day project duration.

Office Support: Pennoni's design engineer will provide support on the project with responses to contractor requests for information (RFIs), questions or requests for clarification from the Authority, support of the construction inspector, conducting the preconstruction meeting, review of contractor requests for payment and change order requests, and project closeout documentation. We will also prepare survey control data, coordinates, and limited CAD files for contractor use in stakeout of key features.

FEE

Our estimated fee, to be billed on a time and material basis, is **Twenty Thousand Dollars** (\$20,000).

Work will be done on an hourly basis, billed at the Authority's approved rates for Pennoni for 2013.

Extraordinary expenses, authorized in advance and identifiable to the specific project will be billed in addition to the above stated fees. These expenses include, but are not limited to: permit application fees, Federal Express and delivery charges, and the reproduction of plans and specifications by outside services. We do not bill for such items as relatively small amounts of in-house printing, mailing expenses, reasonable telephone calls, and travel expenses.

BILLING AND PAYMENT

Fees will be billed monthly based on actual services completed. Payment is due upon receipt of invoice. Billing and Payment shall be in accordance with Item three (3) of the attached General Terms and Conditions.

The client acknowledges that the method of Billing and Payment has been discussed in detail; that the terms agreed upon can only be changed by a written addendum agreed to by both parties; and work may be stopped until payment is made in accordance with the agreement.

TERMS AND CONDITIONSGeneral

Pennoni Associates Inc. General Terms and Conditions (Form No. LE01, Rev. 09/2002) as approved with our contract with the Authority are considered as part of this proposal.

Special

- a. Revisions to the plans or documents as a result of personal preferences of contractors, reviewing agencies, agency consultants, and the client will be performed as additional work on an hourly basis.
- b. We assume that a reasonable and customary number of contractor RFIs will be processed, and that submittals will be generally accurate and complete, with relatively minimal revisions required by the design engineer. Processing of excessive RFIs and repetitive markups of submittals will be billed on a time and materials basis as additional work.
- c. Inspection time is limited to 150 hours in aggregate between the field inspector and the design engineer. Additional time, if requested, will be billed on a time and materials basis.
- d. This proposal is limited strictly to those items quoted above.

We appreciate this opportunity to submit our proposal to the Authority. Should you have any questions or need additional information, please do not hesitate to call. Please sign and return one (1) copy of this proposal as our Notice to Proceed.

Sincerely,

PENNONI ASSOCIATES INC.



Daniel P. Barbato, P.E.
Authority Engineer

June 6, 2013

Page 4

Rick Smith

RPS Diversion Construction Phase Support

ACCEPTED BY: _____

(Print Name and Title)

DATE: _____

Memo

East Goshen Township

1580 Paoli Pike

West Chester, PA 19380

Voice (610) 692-7171

Fax (610) 425-8950

E-mail rsmith@eastgoshen.org

Date: May 30, 2013

To: Planning Commission
Conservancy Board
Historical Commission
Park Commission
Municipal Authority ✓
Commerce Development Commission

From: Rick Smith, Township Manager

Re: Annual Planning Session Goals

At their meeting on February 5, 2013 the Board of Supervisor reviewed the goals presented by the each ABC at the Planning Session and determined that there may be a miscommunication in terminology. Some of the proposed goals would be typically considered a task or an action item that needs to be completed in order to achieve the "goal".

Attached are the "goals" as agreed to by the Board of Supervisors.

The Board requests that each ABC provide a brief quarterly report on their progress toward achieving their goals as listed on the attached.

It would be appreciated if you could review your respective "goals" and generate such report at your June Meeting. Thanks.

Goals for 2013

Conservancy Board

Continue control of invasive plants species in Township wetlands, while leveraging past work with the Park & Recreation Commission and Public Works Department on reforestation, understory and meadows efforts in Applebrook Park.

Create environmental education for residences around storm water control, such as rain gardens and rain barrels. Specifically, look at having rain barrels installed at the East Goshen Township building.

Historical Commission

Work with Chester County and the local townships to complete the state funded Battle of the Clouds project.

Complete entry of all Blacksmith Shop and Plank House historic items into the township's archival database.

Municipal Authority

Marydell Pump Station Elimination Project– Complete construction

Hershey Mill Pump Station Diversion Project – Complete construction

Reserve Pump Station Elimination Project – Complete construction

Park and Recreation Commission

Develop a marketing plan for East Goshen Park.

Expand and enhance East Goshen Farmers Market

Continue to increase revenue opportunities: for example:

- a. A ball field signage/sponsorship plan
- b. Mobile food vendors
- c. Community events

Develop a community health and wellness program that addresses the needs of our township's demographics. (Long Term Goal)

Planning Commission

Consider developing and implementing solar energy regulations that provide appropriate safeguards for screening, storm-water, setbacks, etc.

Finalize Zoning Ordinance Amendment recommendations made to the Board of Supervisors by the Commission as a result of the 2012 Zoning Ordinance review.

Commerce Development Commission

Update commercial business community directory list for inclusion on township website. To be rolled out in February 2013. Theme: Support businesses supporting EGT with their taxes.

Conduct fact finding interviews with landlords and develop recommendations to issues effecting shopping centers.

EAST GOSHEN MUNICIPAL AUTHORITY
EAST GOSHEN TOWNSHIP
1580 PAOLI PIKE, WEST CHESTER, PA 19380-6199

June 7, 2013

To: Municipal Authority
From: Mark Miller
Re: May 2013 Monthly Report

Meters: Meters were read on a daily basis. No problems to report. The portable flows meters were read as well.

Pump Stations: Were visited on a daily basis

C.C. Collection: We had a problem with the Barkway Pump Station, the control board went bad. M.S. Service was called in to replace the board.

The backup float system was acting up at the Hershey Mill Pump Station; we pulled two floats and replaced them.

The Hershey Mill Force has been switched over. We noticed a big difference in the pumps due to less head pressure. The switch over went well.

We were notified of a sewer back-up on Barker Drive. The blockage was cleared. We were notified a week later of another clog. We ended up digging the trap and found a piece of a cast broken off and wedged in the pipe.

We were called out to Heather Lane for a sewer odor, we pulled the sketch plan of the sewer lateral from the house to the street, and this allowed us to locate a cleanout which had a broken cap. The cap was replaced.

R.C. Collection: All pump stations were visited on a daily basis. No problems to report.

R.C. Plant:

Scott asked to meet with me to go over some minor problems. Nothing else to report.

Alarms:

We received a total of 22 alarms.

PA One Calls:

We received 94 PA One calls for the month of May.



MEMORANDUM

TO: East Goshen Municipal Authority Board
Rick Smith, Township Manager

FROM: Daniel Barbato, P.E.
Authority Engineer

DATE: June 6, 2013

SUBJECT: Engineer's Report

Invoices

- Invoices with summaries are provided under separate cover.

Ridley Creek Sewage Treatment Plant (RCSTP)

- Pennoni continues to coordinate with the Plant Operator and will provide operations assistance as needed. No issues were brought to our attention in May.

Marydell PS Elimination

- We continued to perform field observation of the sewer construction including jacking and boring across Boot Road, sewer installation through the island at the intersection of Boot Road and Paoli Pike, pressure testing of three new sewer runs along Paoli Pike, and restoration paving.
- We reviewed the contractor's third payment request and forwarded our recommendation to the Township. We also reviewed two change order requests. We forwarded Change Order #1 to the Township, and we are awaiting additional documentation from the contractor before we prepare Change Order #2.
- We anticipate another 2-3 weeks from the time of this report to complete the project, estimated completion in late June. The contract completion date is July 15.

Hershey's Mill PS Diversion

- We continued to perform office support and field observation of the work, including cured-in-place manhole lining, directional drilling and pipe installation, gate valve installation, hydrostatic pressure testing, pumping and hauling wastewater from the Hershey's Mill PS during the temporary shut-down, connections to existing force main and existing tie-in manhole, activation of the diverted force main, existing force main flushing and abandonment, and temporary pavement restoration.
- We reviewed additional shop drawings for relief valves for pressure testing and manhole ladders.

EGMA 1301

- Only limited work remains: punchlist items, installation of a plug in the abandoned pipe at the manhole on Clover Lane, site clean-up and restoration, and removal of temporary paving and replacement with permanent paving. The punchlist and restoration work is expected to be completed within the next 1-2 weeks, and the contractor intends to install permanent paving in early July.
- We reviewed the contractor's first payment request and notified the contractor of required revisions. We will forward our recommendation to the Township prior to the June Authority meeting.

Reserve PS Elimination

- We finalized the plans and specifications and solicited the project on PennBID on May 17, 2013. Bids are due June 19, 2013 at 10:00 a.m. with the intent to award the project at the Special Authority meeting on June 25, 2013. Construction will likely begin in mid to late July, and the contract duration is 90 days.
- We attended a non-mandatory pre-bid meeting on June 4, 2013. Four (4) contractors attended.
- We also issued Addendum #1 and responded to questions from prospective bidders.

Reservoir Road Pump Station

- We updated our scope concept and cost estimate from 2009 and forwarded a summary memo to the Township.



Monthly Operations Report: May 2013

Treatment Process Operation

During April 2013, there were no exceedances of the final effluent discharge limitations for outfall 001. Flow to Applebrook, Outfall 002, began on April 26th. Table 1 illustrates the final effluent composite sample data reported during April.

Table 1

April 2013 - Final Effluent - Out Fall 001											
NPDES Permit Discharge Limitations	Flow	CBOD ₅		TSS		NH ₄ -N		Phosphorus, Total , mg/L		Fecal Coliform	
	MGD Average	mg/L	lbs/ month	mg/L	lbs/ month	mg/L	lbs/ month	mg/L	lbs/ month	Geo Mean	Geo Mean
	0.75	20	125	21	131	7	44	0.5	3	200	1,000
	Instantaneous Maximum	40		42							
Sample Date											
April 2, 2013	0.207	2.0	3.5	5	9	0.100	0.17	0.24	0.41	1	0.0000
April 11, 2013	0.169	2.0	2.8	5	7	0.100	0.14	0.13	0.18	1	0.0000
April 16, 2013	0.188	2.0	3.1	13	20	0.187	0.29	0.12	0.19	1	0.0000
April 23, 2013	0.224	2.0	3.7	9	17	0.100	0.19	0.17	0.32	1	0.0000
April 30, 2013	0.071	2.0	1.2	5	3	0.159	0.09	0.10	0.06	1	0.0000
Average	0.1718	2.0	3	7	11	0.129	0.18	0.15	0.23	1	0.0000
Minimum	0.0710	2.0	1	5	3	0.100	0.09	0.10	0.06	1	0.0000
Maximum	0.2240	2.0	4	13	20	0.187	0.29	0.24	0.41	1	0.0000

The monthly average total phosphorus concentration was 0.23 mg/L as compared to the discharge limitation of 0.5 mg/L. During the month, the final effluent total phosphorus concentration discharged ranged from 0.10 mg/L to 0.24 mg/L.

During the month of May 2013, there are no anticipated non-compliance issues with respect to the discharge permit limitations. It is noted that the final effluent CBOD₅ collected on May 23rd is under review due to suspected test error or contaminated sample. The sample is being retested for CBOD₅, including additional analysis for COD.

Table 2 presents the available final effluent data for the month of May.



Table 2

May 2013 - Final Effluent - Out Fall 001											
NPDES Permit Discharge Limitations	Flow	CBOD ₅		TSS		NH ₄ -N		Phosphorus, Total , mg/L		Fecal Coliform	
	MGD Average	mg/L	lbs/ month	mg/L	lbs/ month	mg/L	lbs/ month	mg/L	lbs/ month	Geo Mean	Geo Mean
	0.75	20	125	21	131	7	44	0.5	3	200	1,000
	Instantaneous Maximum	40		42							
Sample Date											
May 7, 2013	0.066	2.0	1.1	5	3	0.100	0.06	0.10	0.06	1	0.0000
May 16, 2013	0.104	2.0	1.7	7	6	0.153	0.13	0.26	0.23	1	0.0000
May 23, 2013	0.089			5	4			0.35	0.26	1	0.0000
May 30, 2013	0.122							0.23	0.23	1	0.0000
Average	0.0953	2.0	1	6	4	0.127	0.09	0.24	0.19	1	0.0000
Minimum	0.0660	2.0	1	5	3	0.100	0.06	0.10	0.06	1	0.0000
Maximum	0.1220	2.0	2	7	6	0.153	0.13	0.35	0.26	1	0.0000

Transfer of treated effluent to the Applebrook Golf Course was initiated on April 26, 2013. The Township Staff replaced the pump due to the original pump being seized and drawing excessive amperage. During May, the replacement pump is discharging an average of 161,512 gallons per day. Table 3 presents available data for the Applebrook discharge.

Table 3

May 2013 - Applebrook - Out Fall 002											
NPDES Permit Discharge Limitations	Flow	CBOD ₅		TSS		NH ₄ -N		, mg/L		Fecal Coliform	
	MGD Average	mg/L	lbs/ month	mg/L	lbs/ month	mg/L	lbs/ month	mg/L	lbs/ month	Geo Mean	Geo Mean
	0.75	20	125	21	131	7	44	0.5	3	200	1,000
	Instantaneous Maximum	40		42							
Sample Date											
May 7, 2013	0.158	2.0	2.6	5	7	0.100	0.13	0.10	0.13	1	0.0000
May 16, 2013	0.191	2.0	3.2	7	11	0.153	0.24	0.26	0.41	1	0.0000
May 23, 2013	0.157			5	7			0.35	0.46	1	0.0000
May 30, 2013	0.152							0.23	0.29	1	0.0000
Average	0.1645	2.0	3	6	8	0.127	0.19	0.24	0.32	1	0.0000
Minimum	0.1523	2.0	3	5	7	0.100	0.13	0.10	0.13	1	0.0000
Maximum	0.1905	2.0	3	7	11	0.153	0.24	0.35	0.46	1	0.0000



Table 4 presents the influent wastewater pollutant concentrations and loading entering the wastewater treatment facility. Composite samples are collected at the influent doghouse manhole. The influent flow meter reading is collected from the influent flow meter located prior to the Screening Building, excluding the internal recycle flows.

Table 4

May 2013 - Influent Wastewater											
Design Basis	Flow	BOD ₅		TSS		NH ₄ -N		TKN, mg/L		Phosphorus, Total, mg/L	
		mg/L	lbs/day	mg/L	lbs/day	mg/L	lbs/day	mg/L	lbs/day	mg/L	lbs/day
	MGD Average	335	2,098	320	2,001	32	200	48	301	9.1	57
Sample Date											
May 7, 2013	0.2794	118	275	138	322	23	54	34.8	81	4.1	10
May 16, 2013	0.3979	131	435	124	411	28	93	36.2	120	4.5	15
May 23, 2013	0.2884										
May 30, 2013	0.3786										
Average	0.3361	125	355	131	367	26	73	36	101	4	12
Minimum	0.2794	118	275	124	322	23	54	35	81	4	10
Maximum	0.3979	131	435	138	411	28	93	36	120	5	15

Sequencing batch reactors (SBRs) numbered 1, 3 and 4 were in service during the month of May. Process monitoring of each SBR included ammonia as N, nitrite as N, Nitrate as N, COD, SSV, MLSS and total phosphorus. Microscopic examinations and physical observation of the SBR MLSS and foam color is ongoing. Foam concentrations remained around the same concentration as during March. Present surface area coverage during React Phase ranges from approximately 90 to 100%. The foam remains as light brown in color and averages 2 to 4 inches in depth

Daily monitoring of the influent and final effluent 24-hour composites samples for total phosphorus is ongoing. Daily analysis of the final effluent flow equalization grab sample is total phosphorus is ongoing.

Addition of aluminum sulfate solution to the SBRs to assist with phosphorus removal continued. The volume of aluminum sulfate solution to the SBRs was



increased at end of May as total phosphorus concentrations in the SBRs at the end of the React Phase began to increase.

SBR No. 2 remains out of service. The tank was partially filled to allow for the blower to operate to prevent odor production. Transfer of the contents and cleaning of the SBR is planned for June to reduce energy costs and potentials for odors.

Process Monitoring On-Line Instrumentation:

The ChemScan phosphate analyzer remains on line. Comparison testing for reactive (ortho) and total phosphorus has been discontinued due to the large differences in phosphorus values between the onsite and online analyzer.

The Hach Company has expressed interest towards piloting their on line instrumentation. Data is being gathered to assist Hach towards deploying a unit for piloting at RCSTP.

Presented below is a summary of the flow data for May 2013:

Flow data:

May 2013		
Flow Meter Location	Total Volume for Month, MGD	Average Daily Flow, gpd
Influent Wastewater to Screening Building	10.077	325,052
Influent Wastewater to SBRs	11.125	358,875
Internal Recycle	1.061	35,376
Treated Effluent to Disc Filters	10.539	339,965
Final Effluent Discharge	3.162	102,000
Applebrook Golf Course	5.007	161,512

Chemical Usage:

May 2013		
Chemical	Daily Average	Total Monthly
Soda Ash	339 lbs./day	10,500 pounds
Magnesium Hydroxide	0 gpd	0 gallons
Aluminum Sulfate solution	47 gpd	1,445 gallons
Polymer (centrifuge)	7.1*	164 gallons

**Twenty three (23) days of centrifuge operation*



Solids Dewatering and Disposal: May 2013

Sludge Dewatering Summary	
Gallons of sludge dewatered	453,379 gallons
Average Dewatered Total Solids, %	18.%*
Wet Tons	54*
Dry Tons	10*
Number of dumpsters	7

*Total solids, wet ton and dry tons are estimates based on available data at the time this report was prepared.

During the month, sludge wasting to the sludge holding tanks and decanting of the sludge holding tanks was ongoing. Process monitoring included pH, total alkalinity and total solids.

Sludge holding tank No. 1 was in service. The level at the beginning of the month was 10.79 feet and the level at the end of the month was 5.51 feet. The initial total solids concentration was 0.60% and ended the month as 0.57% total solids. A total of 118,478 gallons of supernatant was decanted during the month.

Sludge holding tank No. 2 was in service. The level at the beginning of the month was 13.21 feet and the level at the end of the month was 11.67 feet. The initial total solids concentration was 0.94% and ended the month as 0.67% total solids. Zero (0) gallons of supernatant were decanted during the month.

Significant Storm Events

During May there were no significant rainfall events contributing to excessive influent wastewater flows to the treatment facility.

Minor Repairs and Preventative Maintenance

- Replaced the grease in blowers B1A, B1B, B1C and B2.
- Replaced a failed pump tube for alum feed pump MP-31.
- Requested and received supplies to repair the leaking alum valves.
- Removed the centrifuge controls UPS for repair/replacement.

2013 FLOWMETERS

Precip.	2013 MAY 2ND QUARTER METERS FROM WEST GOSHEN - CC COLLECTION															
	WESTTOWN WAY			ELLIS LANE			PAOLI PIKE			WILSON DRIVE			SUMMIT	NET		
Inches	DATE	READING	GPD	READING	GPD	READING	GPD	READING	GPD	READING	GPD	READING	GPD	GPD	FLWS	
0	05/01/13	263,752	1,321,750	757,034	112,175	527,357	81,768	16,396,671	77,460	16,440,144	75,550	16,503,949	45,710	24,000	24,000	1,050,348
0	05/02/13	264,878	1,126,000	765,981	89,470	534,871	75,140	16,404,441	77,700	16,490,236	69,100	16,541,456	71,970	24,000	24,000	883,690
0	05/03/13	265,847	969,000	773,804	78,230	541,052	61,910	16,410,867	64,260	16,476,094	89,875	16,520,366	54,723	24,000	24,000	764,600
0	05/04/13															0
0	05/05/13															0
0	05/06/13															0
0	05/07/13	269,884	1,345,667	807,354	111,833	566,510	84,827	16,432,589	72,407	16,440,144	75,550	16,503,949	45,710	24,000	24,000	1,076,600
1.25	05/08/13	270,946	1,062,000	816,031	86,770	573,467	69,570	16,440,144	75,550	16,490,236	69,100	16,541,456	71,970	24,000	24,000	830,110
0	05/09/13															0
0	05/10/13															0
0.2	05/11/13															0
0	05/12/13															0
0	05/13/13	277,042	1,524,000	876,668	151,593	609,877	91,025	16,476,094	89,875	16,483,326	72,320	16,520,366	54,723	24,000	24,000	1,191,508
0.03	05/14/13	278,158	1,116,000	886,355	96,870	616,356	64,790	16,483,326	72,320	16,490,236	69,100	16,541,456	71,970	24,000	24,000	882,020
0	05/15/13	279,244	1,086,000	895,790	94,350	623,014	66,580	16,490,236	69,100	16,503,949	45,710	16,520,366	54,723	24,000	24,000	855,970
0.03	05/16/13															0
0.12	05/17/13	281,404	1,080,000	913,752	89,810	635,840	64,130	16,503,949	45,710	16,503,949	45,710	16,520,366	54,723	24,000	24,000	880,350
0.12	05/18/13															0
0	05/19/13															0
0	05/20/13	284,512	1,036,000	941,249	91,657	655,404	65,213	16,520,366	54,723	16,520,366	54,723	16,520,366	54,723	24,000	24,000	824,407
0	05/21/13	285,577	1,065,000	950,040	87,910	661,818	64,140	16,527,239	68,730	16,527,239	68,730	16,527,239	68,730	24,000	24,000	844,220
0	05/22/13	286,639	1,062,000	958,697	86,570	667,939	61,210	16,534,259	70,200	16,534,259	70,200	16,534,259	70,200	24,000	24,000	844,020
0.47	05/23/13	287,697	1,058,000	967,332	86,350	674,557	66,180	16,541,456	71,970	16,541,456	71,970	16,541,456	71,970	24,000	24,000	833,500
0.1	05/24/13	288,801	1,104,000	977,084	97,520	681,499	69,420	16,548,778	73,220	16,548,778	73,220	16,548,778	73,220	24,000	24,000	863,840
0	05/25/13															0
0	05/26/13															0
0	05/27/13															0
0.33	05/28/13															0
0	05/29/13	293,659	971,600	1,020,169	86,170	715,783	68,568	16,574,630	61,704	16,574,630	61,704	16,574,630	61,704	24,000	24,000	765,158
0	05/30/13	294,669	1,010,000	1,029,206	90,370	722,811	70,280	16,582,380	77,500	16,582,380	77,500	16,582,380	77,500	24,000	24,000	771,850
0.00	05/31/13	295,594	925,000	1,037,462	82,560	729,968	71,570	16,589,287	69,070	16,589,287	69,070	16,589,287	69,070	24,000	24,000	701,800
3.65			1,109,530		95,306		70,372		69,500		20,400					874,352

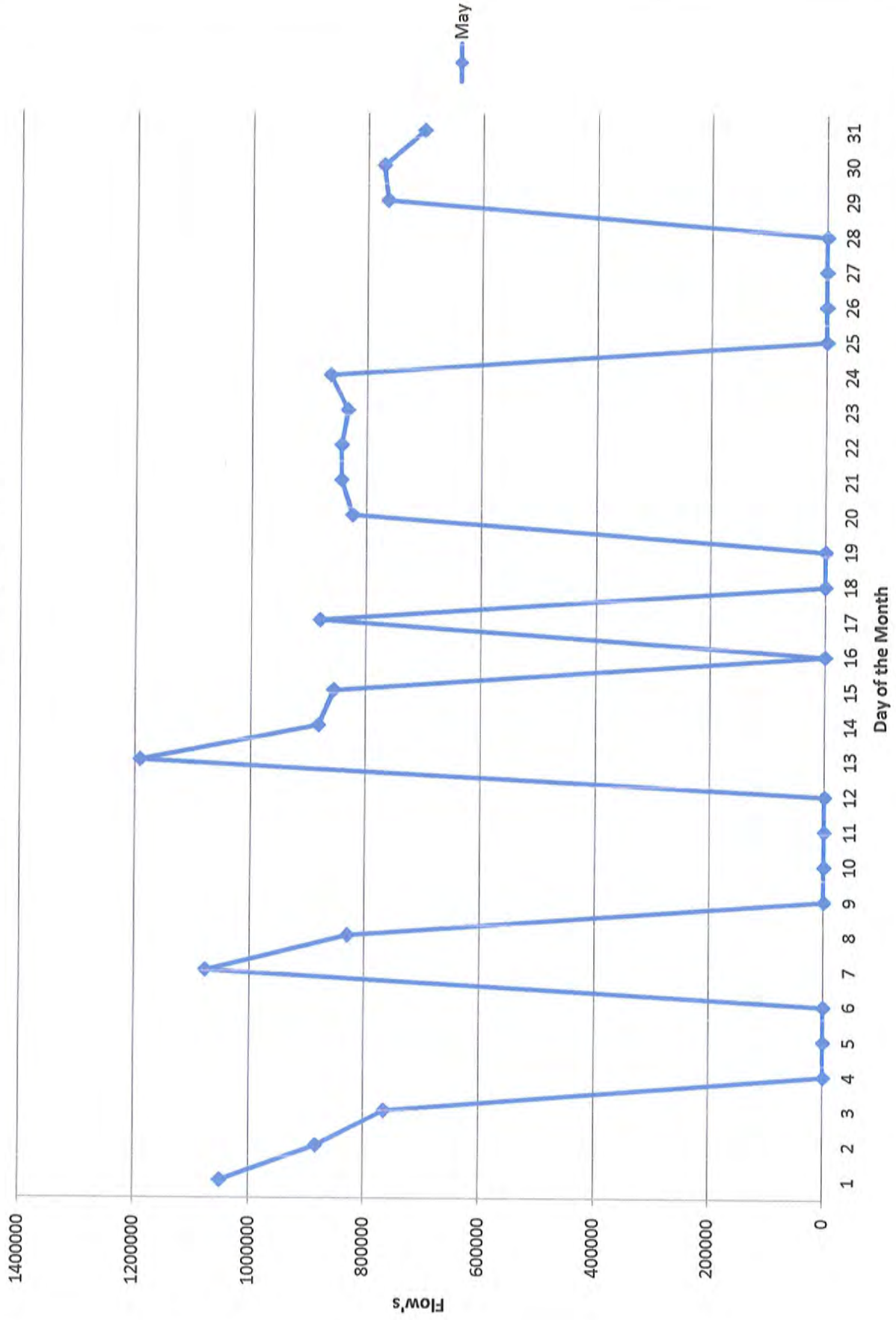
EG TWP	3.65
MONTH TO DATE	18.07
NORMAL MONTH TO DATE	
YEAR TO DATE	
NORMAL YEAR TO DATE (DL)	

2013 SUMMARY OF METER READINGS

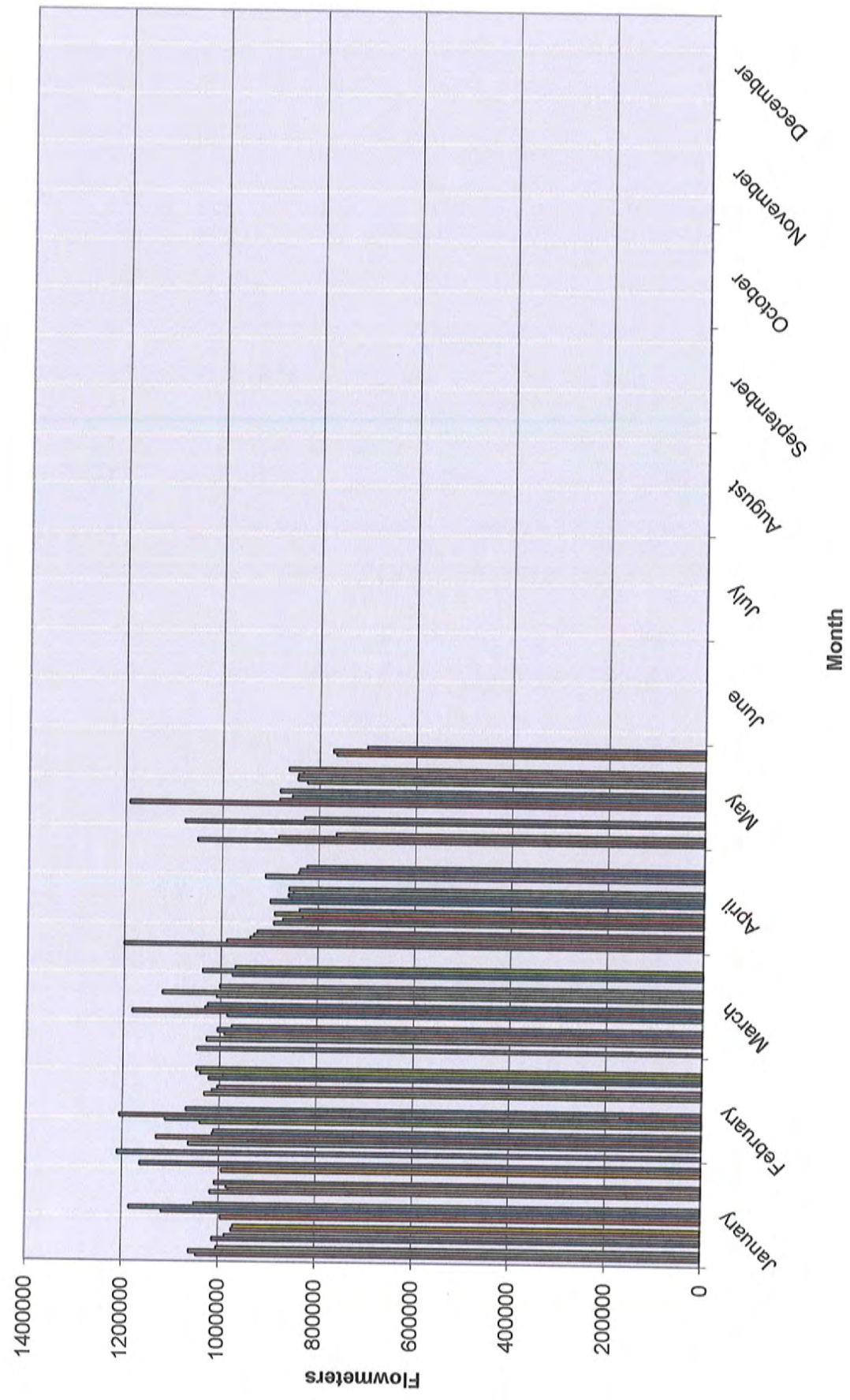
	WESTTOWN WAY	ELLIS LANE	PAOLI PIKE	WILSON DRIVE	SUMMIT	HERSHEY MILL	ASHBRIDGE	HICKS	RESERVOIR	SHERMAN	BARKWAY
JANUARY	1,277,069	120,481	60,165	63,671	20,400	89,992	70,106		922,377	7,363	11,147
FEBRUARY	1,297,700	101,955	56,216	77,811	20,400	89,500	64,950	387,898	936,368	7,669	10,544
MARCH	1,285,156	105,488	68,636	85,607	20,400	79,416	66,580	292,895	594,040	3,899	7,122
APRIL	1,127,728	92,814	69,146	68,496	20,400	73,245	59,483	365,108	1,030,755	5,310	9,527
MAY	1,109,530	95,306	70,372	69,500	20,400	81,412	65,970	335,818	864,850	6,661	11,011
JUNE											
JULY											
AUGUST											
SEPTEMBER											
OCTOBER											
NOVEMBER											
DECEMBER											
Total Flows											
Monthly Ave	1,219,437	103,209	64,907	73,017	20,400	82,713	65,418	345,430	869,678	6,180	9,870

To
West Goshen 978,304

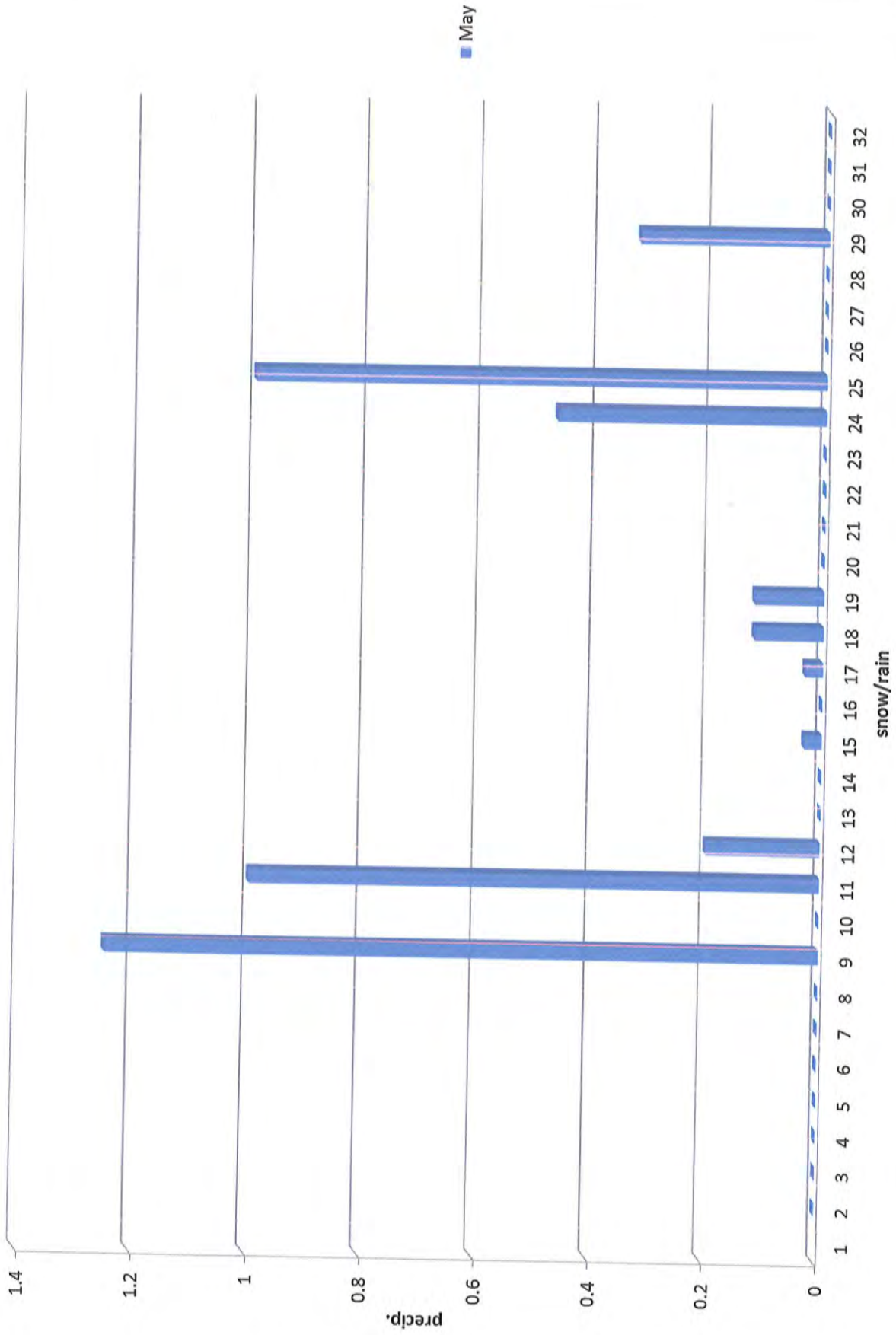
Flowmeters May 2013



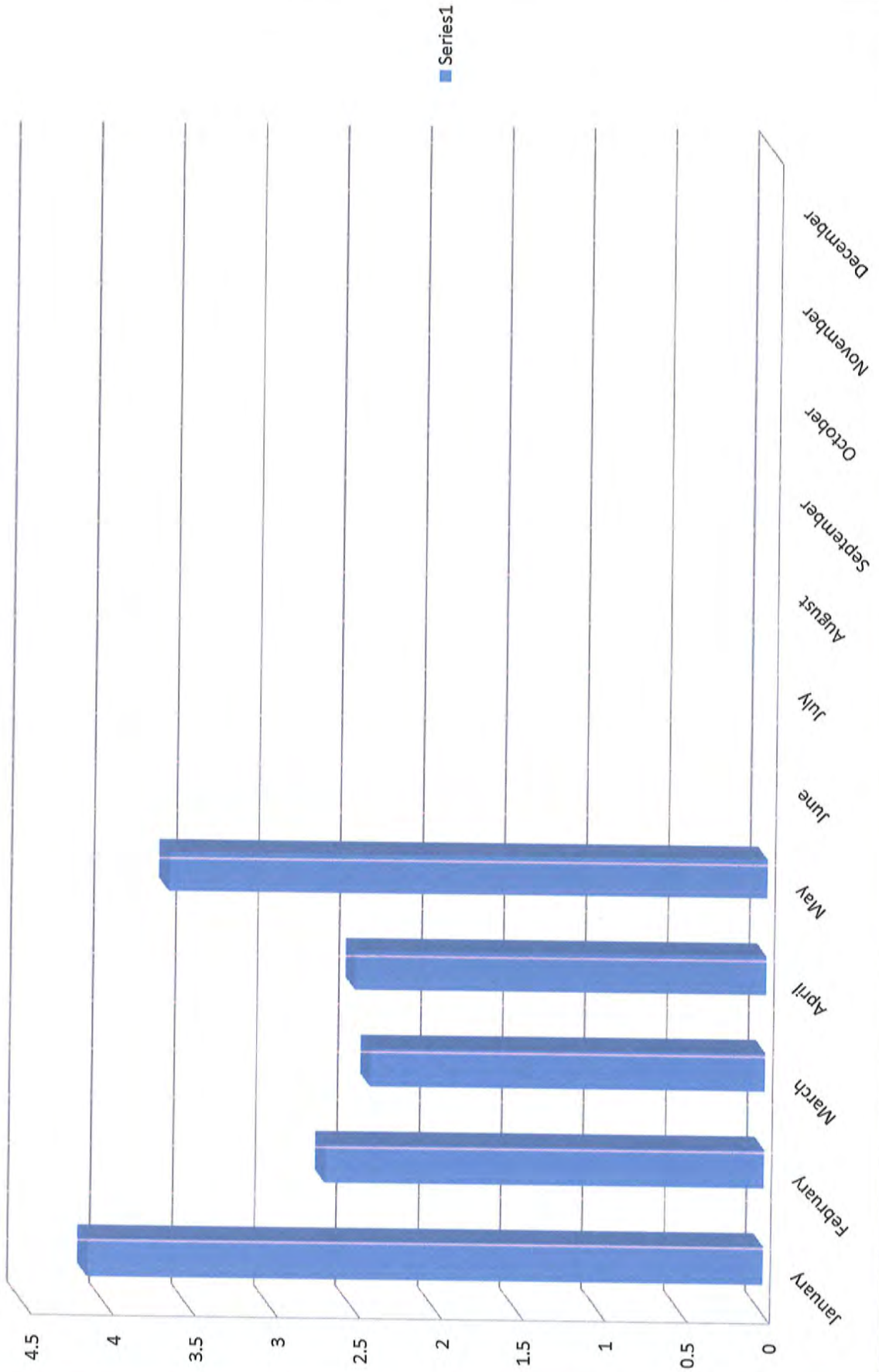
Monthly Totals 2012 Jan-Dec



May Precip 3.65 - 2013



2013 Monthly Precipitation



May 2013

Mr. Rick Smith
East Goshen Municipal Authority
1580 Paoli Pike
West Chester, PA 19380-6107

Dear Rick:

The firm has some exciting news to share and as one of our most valued clients, I wanted you to hear it from me first! On Monday May 6, we officially relaunched our company brand! We are now known as "**Maillie LLP.**"

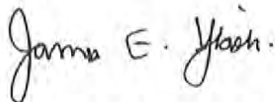
The visible changes include:

1. **Our Name:** We will now be doing business as **Maillie LLP.**
2. **Our Logo:** To compliment our new name we have a fresh, new, modern logo.
3. **Our Website:** A completely new website has been developed and deployed that will enable us to better serve you and all of our clients. Please visit us at www.maillie.com.

While there will be many exciting changes coming this month, one thing that won't change is our commitment to a tradition of high-quality service and personalized relationships. I hope you enjoy our new look as much as we do. I've included a list of "frequently asked questions" but don't hesitate to call me if you have any additional questions.

Very truly yours,

MAILLIE LLP



James E. Yiaski, CPA
Principal



Partners:

D. Scott Detar
James M. Powers
Glenn B. Bachman
Raymond T. Mock
Robert L. Caruso
Edward J. Furman
Robert L. Boland
Donald J. Pierce
Richard A. Flanagan, IV
Craig S. Springer
Robert C. Hershey, Jr.
Gregory J. Shank
Laurie E. Harvey

Principals:

Edward Fronczkowski
S. Mark Fuga
James E. Yiaski
William Breslawski Jr.
Shawn M. Cahill
Kathleen A. Wilczek

Frequently Asked Questions - FAQ's

Q1: Why is Maillie, Falconiero & Company, LLP changing its name to Maillie LLP?

A1: As part of our ongoing evolution, Maillie is rebranding our company with a new look, a new company logo, and a brand new website to better serve our clients. We are now officially **Maillie LLP**.

Our History has included a lot of Names!

We have a long history of both organic growth and mergers that has resulted in Maillie becoming both a top 25 regional accounting firm and one of the top 200 in the country. Our heritage goes back to 1946 and the current firm still reflects the expertise acquired during all of those mergers, which include:

- Maillie, McCarraher, Lennon & Co., Pottstown, founded in 1946
- Falconiero & Company, King of Prussia, founded in 1964
- Sanville & Fisher, West Chester, founded in 1953
- S.I. Cohn and Associates, P.D., Exton, founded in 1973
- Croft, Drozd & Company, Exton, founded in 1973

Q2: Will the change affect my relationship with Maillie?

A2: No, the rebranding of Maillie is designed only to enhance our ability to communicate with our clients. Your relationships with partners, principals, and staff at Maillie won't change. While we're changing our name slightly, our firm's commitment to high quality and highly personal service remains the hallmark of our commitment to our clients.

Q3: Why a new website?

A3: Have you looked at our old website? Neither had anyone else! A modern and dynamic website is essential to keeping our current clients well informed on issues that will directly affect them and their businesses. While the expertise of the Maillie team has grown steadily over the past 67 years, our communication tools were in need of an update. Today's rapidly changing business environment demands a wide variety of tools that can enable us to help our clients win in the marketplace. The new www.maillie.com website will greatly enhance our ability to provide our clients up-to-date content and two-way communication tools.

Q4: What do I need to do?

A4: Nothing is required on your part. We just didn't want you to be surprised when you see the new company letterhead or venture onto our completely new website. Please feel free to contact your team at Maillie if you have any questions at all. We look forward to continuing to serve your needs in 2013 and beyond... The same way we've done it since 1946.

EAST GOSHEN MUNICIPAL AUTHORITY
EAST GOSHEN TOWNSHIP
1580 PAOLI PIKE, WEST CHESTER, PA 19380-6199

FYI

May 28, 2013

Bryan Del Monte
1710 Clocktower Drive
West Chester, PA 19380

Dear Bryan:

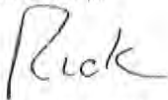
At their meeting on May 13, 2013 the Municipal Authority members considered your request to make real time flow information at the Ridley Creek Sewer Plant available on the Township web page. After reviewing the matter with the Township's computer consultant and with the sewer plant operator, the Authority determined that it would not be possible to accommodate your request.

Our consultant advised that allowing anyone to view the flow information basically opens a window to the computer system that controls the plant processes. His concern is that he could not guarantee that someone could not hack into the system.

In addition our operator opined that doing so may run afoul of recent amendments to the federal regulations concerning the operation of water and wastewater treatment facilities.

I would add that the Municipal Authority Agenda Packet, which is posted on the Township web page monthly, contains a copy of the sewer plant operator's monthly report, which includes the flow data.

Sincerely,



Louis F. Smith, Jr.
Township Manager

BOARD OF SUPERVISORS
EAST GOSHEN TOWNSHIP
CHESTER COUNTY
1580 PAOLI PIKE, WEST CHESTER, PA 19380-6199

FYI

May 28, 2013

Dear Property Owner:

The purpose of this letter is to inform you that the owner of 1637 Manley Rd., West Chester, PA 19380, has submitted a subdivision sketch plan for review and comment by the Township Planning Commission. The owner, Patricia O'Neill, proposes a 2 lot subdivision of her property. The existing parcel has an area of approximately 5.84 acres and has an existing single family home and accessory structures. The sketch plan proposes the subdivision of one new 1.23 acre lot to the east of the existing home for a new residential single family use.

Pursuant to Township policy, property owners and residents within 1000 feet of the subject property are notified of sketch plan submissions.

The meeting dates and times scheduled for the review and discussion of this application are outlined below and subject to change.

June 5, 2013 - Planning Commission meeting (workshop at 7:00 pm, formal meeting @ 7:30 pm) **(Presentation of Sketch Plan)**

All meetings are held at the Township Building and are open to the public. The plans are available for review at the Township building during normal business hours. Please give me a call at or email me at mgordon@eastgoshen.org if you have any questions or need additional information.

Sincerely,



Mark A. Gordon
Township Zoning Officer

Cc: All Township Authorities, Boards and Commissions