

EAST GOSHEN MUNICIPAL AUTHORITY

September 9, 2013

Monday 7:00 PM

1. CALL TO ORDER/PLEDGE OF ALLEGIANCE/MOMENT OF SILENCE
 - a. Ask if anyone will be taping the meeting?
2. CHAIRMAN'S REPORT/OTHER MEMBERS REPORTS
3. APPROVAL OF MINUTES
 - a. August 12, 2013
4. APPROVAL OF INVOICES

	<u>Payment Authorized on June 25th</u>		
a.	Pennoni #559122	\$	553.75
b.	Pennoni #559123	\$	1,160.25
c.	Pennoni #559124	\$	607.50
d.	Pennoni #55912	\$	868.75
5. LIAISON REPORTS
6. FINANCIAL REPORTS
 - a. August 2013 Reports
7. OLD BUSINESS
 - a.
8. GOALS
 - a. August Goals
9. NEW BUSINESS
 - a. General Engineering Budget Request
 - b. Approve Resolution For new Borrowing
 - c. Authorize Execution Of Loan Document
10. CAPACITY REQUESTS
 - a. Capacity Request For Sunny Ridge Farms, 4 lot subdivision
11. SEWER REPORTS
 - a. Director of Public Works Report
 - b. Pennoni Engineer's Report
 - c. Big Fish Environmental Inc Report with DMR's
 - d. East Goshen Township Flows for August 2013
12. ANY OTHER MATTER

13. CORRESPONDENCE AND REPORTS OF INTEREST

14. PUBLIC COMMENT

15. ADJOURNMENT

Reminder – NEWSLETTER ARTICLE SUBMISSION DUE DATES:

Article Due Date

Website Posting Date

draft
EAST GOSHEN TOWNSHIP MUNICIPAL AUTHORITY
MEETING MINUTES
August 12, 2013

The East Goshen Township Municipal Authority held their regular public meeting on Monday, August 12, 2013 at 7:00 pm at the East Goshen Township building. Members in attendance were: Chairman Fran Beck, Jack Yahraes, Dana Pizarro, and Ed McAssey. Also in attendance were: Rick Smith (Township Manager), Mark Miller (Director of Public Works), Mike Ellis (Pennoni), Scott Towler (BFES) and Walter Wujcik (Conservancy Board).

COMMON ACRONYMS:

<i>BFES – Big Fish Environmental Services</i>	<i>MA- Municipal Authority</i>
<i>BOS – Board of Supervisors</i>	<i>NPDES – National Pollutant Discharge Elimination System</i>
<i>CB – Conservancy Board</i>	<i>PC – Planning Commission</i>
<i>DEP – Department of Environmental Protection</i>	<i>PR – Park & Recreation Board</i>
<i>EPA – Environmental protection Agency</i>	<i>RCSTP – Ridley Creek Sewer Treatment Plant</i>
<i>HC – Historical Commission</i>	<i>SBR – Sequencing Batch Reactor</i>
<i>I&I – Inflow & Infiltration</i>	<i>SSO – Sanitary System Overflow</i>
<i>LCSTP – Lockwood Chase Sewer Treatment Plant</i>	<i>WAS – Waste Activated Sludge</i>

Call to Order & Pledge of Allegiance

Fran called the meeting to order at 7:00 pm and led those present in the Pledge of Allegiance. There was a moment of silence to remember the troops. Fran asked if anyone would be recording the meeting and there was no response.

Chairman’s Report/Other Member’s Reports

Jack attended the West Goshen meeting. Harrisburg assigned a new Judge to the West Goshen case. In 5-6 years the standard will be 1.8 phosphorous. The state passed a bill which allows appointment of a Storm Water Authority.

Approval of Minutes

The Chairman noted that the minutes of the June 10th and June 25, 2013 meetings were approved as corrected.

Approval of Invoices

1. Payment of the following invoices was approved on June 25 and have been paid:

a.	Penmoni #552001	Paid	\$ 2,770.75
b.	Penmoni #552002	Paid	\$ 3,072.25
c.	Penmoni #552003	Paid	\$ 7,301.50
d.	Penmoni #552004	Paid	\$ 5,803.50
e.	Gawthrop Greenwood #109616	Pd	\$ 700.00
f.	Lockwood Plant closing	Paid	\$10,070.71
g.	Plymar invoice #4 Marydell	Paid	\$31,620.75

Ed moved to ratify payments a - g. Dana asked what the costs were for (f). Mark verified they are costs for Township expenses from March to June. Jack seconded the motion. The motion passed unanimously.

1 2. Dana moved to approve payment of Gawthrop Greenwood invoice #110264 for \$240.00.
2 Jack seconded the motion. The motion passed unanimously.

3
4 3. Jack moved to approve payment of the following Pennoni invoices:

5	i.	Pennoni #555450	\$ 714.25
6	j.	Pennoni #555451	\$ 1,843.75
7	k.	Pennoni #555452	\$ 1,653.75
8	l.	Pennoni #555453	\$ 1,653.75
9	m.	Pennoni #555454	\$ 330.00

10 Dana seconded the motion. The motion passed unanimously.

11
12 4. Dana moved to approve payment of the Delaware Valley Utility Contractors Invoice No. 2
13 for \$22,097.13. Rick mentioned that this project is done and under budget. This includes
14 retainage. Jack seconded the motion. The motion passed unanimously.

15
16 5. Rick commented that the Ply-Mar Construction Co. change order for Marydell P.S.
17 Diversion for \$6,841.06 is included in the total of \$41,133.31. This project came under budget.
18 Jack moved to approve the change order of \$6,841.06 and pay Ply-Mar #5 for \$41,133.31. Dana
19 seconded the motion. The motion passed unanimously.

20 21 **Liaison Reports**

22 1. Conservancy Board – Walter reported that, at their next meeting this week, they will review
23 the 2014 proposed budget. They will discuss additional plantings on E. Boot Rd for later this
24 year. They will review the Sunny Ridge Landscape Plan.

25 2. BOS – Carmen commented that they will be doing financial forecasting and review of ABCs
26 2014 budgets.

27 28 **Financial Reports**

29 Jon Altshul's report - The Municipal Authority recorded \$217,367.31 in expenses and
30 \$249,991.32 in revenues in June, a difference of +\$32,624.01, and \$50,006.81 in revenues and
31 \$62,123.75 in expenses in July, a difference of -\$12,116.94. The fund balance is \$69,790.80.

32 33 **Old Business**

34 Rick reported that the contract for the Reserve Pump Station Diversion was awarded to Ron
35 Smith.

36 37 **Goals**

38 Newsletter article due by September 1 – Kevin will provide.

39 Ed will attend the September West Goshen meeting.

40 41 **Sewer Reports**

42 **1. Big Fish Environmental, Monthly Operations Report for June 2013.**

43 Scott reported the following: During May 2013 there were no exceedances of the final effluent
44 discharge limitations for outfall 001. The monthly average total phosphorus concentration was
45 0.24 mg/L as compared to the discharge limitation of 0.5 mg/L. During the month, the final
46 effluent total phosphorus concentration discharged ranged from 0.10 mg/L to 0.35 mg/L. Flow

1 to Applebrook, Outfall 002, continued in May and June. The influent loadings remained within
2 the treatment facility design loadings. During the month of June, there were no exceedances of
3 the permit limitations for the monthly averages. There were two exceedances of the weekly and
4 instantaneous permit limitations for total suspended solids and fecal coliform, respectively.
5 Discontinuation of flow to outfall 002, Applebrook, on June 11th avoided exceedances of the
6 permit effluent limitations. These exceedances are directly related to the excessive hydraulic
7 loading to the facility as a result of Tropical Storm Andrea followed by a second rainfall event.
8 From June 6th through June 8th, a total of 3.46 inches of rainfall was recorded at the facility. A
9 second storm event on June 10th through June 11th resulted in an additional 1.09 inches of
10 rainfall. A total of 8.20 inches of rainfall was recorded during the month of June.
11 Samples collected on June 11th and June 26th were analyzed for selected permit parameters.
12 Transfer of treated effluent to the Applebrook Golf Course continued during June with the
13 exception of June 11th through June 14th. During June, the average daily average for Outfall 002
14 was 115,470 gallons per day.
15 Sequencing batch reactors (SBRs) numbers 1, 3, and 4 were in service during the month of May.
16 SBR #2 was placed in service during the high flow events in June.
17 Process monitoring of each SBR included ammonia as N, Nitrite as N, Nitrate as N, COD, SSV,
18 MLSS and total phosphorus. Microscopic examinations and physical observation of the SBR
19 MLSS and foam color is ongoing. Foam concentrations remained around the same concentration
20 as during March. Present surface area coverage during React Phase ranges from approximately
21 90 to 100%. The foam remains as light brown in color and averages 2 to 4 inches in depth.
22 Daily monitoring of the influent and final effluent 24-hour composites samples for total
23 phosphorus is ongoing.
24 Addition of aluminum sulfate solution to the SBRs to assist with phosphorus removal continued.
25 The volume of aluminum sulfate solution to the SBRs was increased at the end of May as total
26 phosphorus concentrations in the SBRs at the end of the React Phase began to increase.
27 SBR #2 remains out of service. The tank was partially filled to allow for the blower to operate to
28 prevent odor production. Transfer of the contents and cleaning of the SBR is planned for June to
29 reduce energy costs and potentials for odors.
30 The ChemScan phosphate analyzer was removed by equipment provider. Coordination with the
31 Hach Company has been initiated to perform a pilot study of their RTC for phosphorus
32 monitoring. Equipment is planned to be deployed when it becomes available.
33 During the month, sludge wasting to the sludge holding tanks and decanting of the sludge
34 holding tanks was ongoing. Process monitoring included pH, total alkalinity and total solids.
35 Sludge holding tank #1 was in service. The level at the beginning of the month as 4.16 feet and
36 the level at the end of the month was 6.10 feet. The initial total solids concentration was 0.59%
37 and ended the month as 0.53% total solids. No supernatant was decanted during the month. A
38 total of 150 pounds of soda ash was added during the month for pH adjustment. Sludge holding
39 tank #2 was in service. The level at the beginning of the month was 12.87 feet and the level at
40 the end of the month was 11.84 feet. The initial total solids concentration was 0.51% and ended
41 the month as 0.65% total solids. A total of 146,300 gallons of supernatant was decanted during
42 the month. A total of 800 pounds of soda ash was added during the month for pH adjustment.
43 As previously described, during June there were two significant rainfall events contributing to
44 excessive influent wastewater flows to the treatment facility.
45
46

1 Minor repairs and preventative maintenance:

- 2 • Replaced the inlet air filters for B1A, B1B, B1C and B2.
- 3 • Replaced the four one inch valves on the piping to the SBRs. The valves were leaking.
- 4 Cleaned the aluminum sulfate solution spill containment tank.
- 5 • Repaired a broken section of one inch pipe used to convey aluminum sulfate solution to
- 6 SBR#2.
- 7 • Installed the replacement centrifuge controls UPS.
- 8 • Replaced the composite sampler suction tubing.
- 9 • Assisted the Township and Aqua Resources with removal of the grit from the influent flow
- 10 channel located within the Screening building.

11
12 Monthly Operations Report for July 2013 – Scott reported the following:

13 During the Month of June 2013, there were no exceedances of the permit limitations for the
14 monthly averages. There were 2 exceedances of the weekly and instantaneous permit limitations
15 for total suspended solids and fecal coliform, respectively. There were no exceedances of the
16 permitted discharge limitations for Outfall 002, Applebrook. Flow to Applebrook was
17 discontinued during the high flow period. The exceedances were the direct result of several
18 filled settle and filled decants when flows exceeded the average daily hydraulic design loading.
19 Composite samples are collected at the influent doghouse manhole. The influent flow meter
20 reading is collected from the influent flow meter located prior to the Screening Building,
21 excluding the internal recycle flows.

22 Process monitoring of each SBR included ammonia as N, nitrite as N, Nitrate as N, COD, SSV,
23 MLSS and total phosphorus. Microscopic examinations and physical observation of the SBR
24 MLSS and foam color is ongoing. Foam concentrations remained around the same concentration
25 as during March. Present surface area coverage during React Phase range from approximately
26 60 to 95%. The foam color ranges from a light to medium brown color and averages 2 to 4
27 inches in depth.

28 Daily monitoring of the influent and final effluent 24-hour composites samples for total
29 phosphorus is ongoing. Daily analysis of the final effluent flow equalization grab sample of total
30 phosphorus is ongoing.

31 Addition of aluminum sulfate solution to the SBRs to assist with phosphorus removal continued.
32 The volume of aluminum sulfate solution to the SBRs was increased during July due to lowering
33 MLSS concentrations to prevent excessive filamentous growth and periods of anoxic conditions
34 incurred during SBR idle times.

35 SBR#2 remains out of service. The tank was partially filled to allow for the blower to operate to
36 prevent odor production. Transfer of the contents and cleaning of the SBR has been postponed
37 until September.

38 Coordination with the Hach Co. is ongoing to perform a pilot study of their RTC for phosphorus
39 monitoring. Equipment is planned to be deployed when it becomes available.

40 During the month, sludge wasting to the sludge holding tanks and decanting of the sludge
41 holding tanks was ongoing. Process monitoring included pH, total alkalinity and total solids.
42 Sludge holding tank #1 was in service. The level at the beginning of the month was 6.37 feet
43 and the level at the end of the month was 13.56 feet. The initial total solids concentration was
44 0.56% and ended the month as 0.63% total solids. A total of 77,000 gallons of supernatant was
45 decanted during the month. A total of 1,100 pounds of soda ash was added during the month for
46 pH adjustment.

1 Sludge holding tank #2 was in service. The level at the beginning of the month was 13.34 feet
2 and the level at the end of the month was 9.25 feet. The initial total solids concentration was
3 0.67% and ended the month as 0.81% total solids. A total of 253,750 gallons of supernatant was
4 decanted during the month. A total of 1,050 pounds of soda ash was added during the month for
5 pH adjustment.

6 No significant storms occurred during July impacting the treatment process.

7
8 Minor repairs and Preventative Maintenance:

- 9 • Repaired and tightened the drive belt for the SBR building exhaust fan.
- 10 • Adjusted the fan for the centrifuge back drive motor.
- 11 • Replaced the intake filter for the SBR blowers.
- 12 • Replaced the pump and motor spider coupling for disc filter #1.
- 13 • Replaced ball valves on aluminum sulfate piping manifold supplying aluminum sulfate.
- 14 • Repair broken aluminum sulfate pvc piping to SBR #2.

15
16 Aqua commented that we should get more use out of the cloth filters. Cost for replacements is
17 about \$9,000. These are for backup. Scott explained the use of the filters. Carmen asked if this
18 could be from the prior contractor. Scott wants to try a different cleaning product.

19
20 **2. Pennoni** – Mike Ellis gave the following report:

21 For July 1, 2013:

22 Ridley Creek Sewage Treatment Plant (RCSTP)

23 We met with the Authority, plant operator, and attorneys regarding past plant operation s, and we
24 reviewed related legal documents.

25
26 Marydell PS Elimination

27 We continued to perform field observation of the sewer construction including sewer installation
28 through the island at the intersection of Boot Rd and Paoli Pk, locating and connecting the
29 Sunoco low pressure sewer to a new manhole, demolition of the Marydell Pump Station, bypass
30 pumping around the pump station, connection of new sewer to the existing manhole behind the
31 pump station, testing of new sewer pipes and manholes, diversion of the existing Marydell
32 wastewater through the new sewers, and restoration paving and landscape work.

33 We reviewed the contractor's fourth payment request and forwarded our recommendation to the
34 Township. The work is substantially complete with only limited punchlist and restoration work
35 remaining. The contractor intends to remove temporary paving and install permanent paving the
36 week of July 8-12. The contract completion date is July 15.

37
38 Hershey's Mill PS Diversion

39 We continued to perform limited office support and field observation of punchlist work
40 including installation of a mechanical plug in the abandoned pipe at the manhole on Clover Lane,
41 site clean-up, and restoration. The contractor intends to remove temporary paving and install
42 permanent paving with week of July 8-12. The contract completion date is July 29.

43
44 Reserve PS Elimination

45 We conducted the bid opening on June 19, prepared a bid tabulation, and forwarded an award
46 recommendation to the Township. Following contract award on June 25, we issued an award

1 letter to the contractor requesting contract documents (Form of Agreement, bonds, and insurance
2 certificate) by July 9.

3 We intend to issue Notice to Proceed with Construction immediately upon receipt, approval, and
4 execution of the contract documents. Construction will likely begin in late July and the contract
5 duration is 90 days.

6 7 Reservoir Road Pump Station

8 We researched other municipalities and utility companies that are implementing or have
9 implemented similar “slip-stream” sewer diversion. We attended an Act 537 pre-planning
10 meeting at PADEP on June 25. PADEP had no planning or permitting objections to the
11 proposed “slip-stream” diversion concept. We initiated preparation of the Act 537 “Task
12 Activity Report” submission for the project following the meeting. The Report is an outline and
13 cost estimate of the proposed Act 537 planning work for PADEP’s approval and for PADEP to
14 add the project to their list for Act 537 reimbursement grant funding. We tentatively expect to
15 submit the Report to PADEP by July 12.

16 17 Hershey’ Mill Pump Station

18 We attended an on-site meeting at the pump station with Mark Miller and MGK Industries to
19 evaluate alternatives for air/vacuum release valving, backpressure controls, and deteriorated
20 piping replacements.

21 22 For August 8, 2013:

23 Invoice - Invoices with summaries are provided under separate cover.

24 Ridley Creek Sewage Treatment Plant (RCSTP) –

25 Pennoni continues to provide operations assistance as needed. No issues were brought to our
26 attention in July. We coordinated with the Township and PADEP in response to an inquiry from
27 PADEP regarding groundwater monitoring at Applebrook.

28 29 Marydell PS Elimination

30 The project is 100% complete. We performed limited field observation during final paving and
31 restoration work. We reviewed and negotiated Change Order #2 with the operator. We also
32 reviewed the contractor’s fifth (final) payment request and forwarded our recommendation to the
33 Township. We reviewed contract closeout documents including as-built plans, sewer inspection
34 videos, payroll certifications, statement of surety, and contractor’s release. We also coordinated
35 the Maintenance Bond with the contractor and surety.

36 37 Hershey’s Mill PS Diversion

38 The project is 100% complete. We performed limited field observation during final paving and
39 restoration work. We performed contract closeout activities including review of the contractor’s
40 second (final) payment request, as-built plans and sketches, drilling logs, payroll certifications,
41 statement of surety, and contractor’s release.

42 43 Reserve PS Elimination

44 We received a partial submission of contract documents (Form of Agreement and insurance
45 certificate) from the awarded contractor. Contract bonds and pollution liability insurance were
46 not provided. We have had numerous conversations with the contractor requesting these

1 documents and responding to his questions and concerns about pollution liability insurance. He
2 has informed us that the bonds and pollution liability insurance will be provided to us on August
3 9. If these documents are provided prior to the August 12 Authority meeting and are found
4 acceptable, we will issue Notice to Proceed with Construction immediately thereafter, likely
5 effective August 14 or 15. We will attempt to schedule a pre-construction meeting within the
6 following week. Construction would then likely begin in early September, and the contract
7 duration is 90 days. As noted above the documents were received and the contract awarded.
8

9 Reservoir Road Pump Station

10 We finalized and submitted the Act 537 “Plan of Study and Task-Activity Report” to PADEP for
11 project approval and for PADEP to add the project to their list for Act 537 reimbursement grant
12 funding. The report was submitted on July 29. PADEP indicated they would attempt to review
13 the report within 2-3 weeks.
14

15 Chapter 94 Reports

16 PADEP conducted a preliminary review of the 2012 RCSTP Chapter 94 Report and provided a
17 review letter with no project-specific comments. The letter does not require any responses.
18 PADEP has not yet provided feedback on the 2012 West Goshen or Westtown Chapter 94
19 Reports or on the Lockwood Chase STP Chapter 94 letter.
20

21 **3. Mark Miller Director of Public Works**, provided the following report for July 2013:

22 Meters: Meters were read on a daily basis. We had a power problem with the Hicks meter.
23 PECO was notified and eventually repaired the problem.

24 Pump Stations: Were visited on a daily basis.

25 C.C. Collection: While performing routine maintenance, we located a break on Margaret Lane,
26 approximately 10,000 gallons a day due to the depth and location. We decided to perform a
27 point repair. We are preparing the roads in Pin Oak Farm for a paving overlay as part of the
28 paving program. We replaced 56 manhole castings and lids. The reason we replaced the lids
29 and castings was because each lid has two pick holes the size of fifty cent coins in the, which
30 allows for INI. The number 2 pump went down at the Hershey Mill Pump station on July 4th.
31 The pump was puller and replaced with a backup pump. The transducer went bad at the
32 Ashbridge Pump Station two weeks ago. The bad transducer was removed and sent out to get
33 repaired.

34 R.C. Collection: The street restoration on Cornwallis Drive was completed. We also paved a
35 portion of the two driveways we used during construction.

36 R.C. Plant: we had two pump problems over the past two months. The first was a pump in the
37 meter pit that failed. I pulled the pump by breaking the pipe union and disconnecting the wire. I
38 handed the pump up to Steve Biondi. We began the task of unscrewing the piping and that’s
39 when we found 2.5” Anacoconda snake jammed in the pump. The other pump was much easier to
40 deal with.

41 Alarms: We received a total of 20 alarms in June and July.

42 PA One Calls: we received 110 PA One calls for the months of June and July.
43

44 Hunt Country – The generator failed this weekend. Mice got to the wires in the control panel. It
45 is running now. The Hunt Country Pump Station is 25 years old. Mark would like to expand it
46 and use some of the equipment from the Reserve Pump Station. He would like to have Mike

1 prepare a cost estimate. Jack moved to authorized Mike Ellis to prepare a cost estimate to
2 expand the Hunt Country Pump Station. Dana seconded the motion. The motion passed
3 unanimously. Mark will email an update before the next meeting.
4

5
6 **2014 Proposed Budget** was reviewed. It must be approved in September.
7

8 **Any Other Matter**

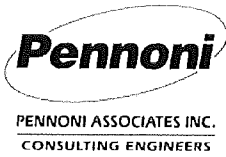
9 Dana will be at PMAA and will report back on anything interesting.
10

11 **Adjournment**

12 There being no further business, Dana moved to adjourn the meeting. Jack seconded the motion.
13 The motion passed unanimously. The meeting was adjourned at 8:00 pm.
14

15 Respectfully submitted,
16

17
18 Ruth Kiefer
19 Recording Secretary



INVOICE

Newark, DE
302-655-4451 Fax: 302-654-2895

Remit Payment To:
Pennoni Associates Inc.
P.O. Box 827328
Philadelphia, PA 19182-7328

East Goshen Municipal Authority
1580 Paoli Pike
West Chester, PA 19380-6199
Attention: Louis F. Smith, Twp Mgr.

Invoice # : 559122
Invoice Date : 08/21/2013
Project : EGMA1107
Project Name : HersheyMill & Reserve PS Div Des
Per

For Services Rendered through: 8/11/2013

FINAL INVOICE

Reserve PS Diversion bid assistance: coordinated resolution of insurance discrepancies, and reviewed contract documents (Form of Agreement, bonds, and insurance certificate).

Phase : 2 -- Sewer Stakeout and Easements

Total Phase : 2 -- Sewer Stakeout and Easements

Labor :	52.50
Expense :	0.00
Phase Total :	52.50

Phase : 3 -- Property Boundary Survey Allocation

Total Phase : 3 -- Property Boundary Survey Allocation

Labor :	105.00
Expense :	0.00
Phase Total :	105.00

Phase : 7 -- Bid Assistance

Total Phase : 7 -- Bid Assistance

Labor :	393.75
Expense :	0.00
Phase Total :	393.75

Phase : 8 -- Additional Meetings

Total Phase : 8 -- Additional Meetings

Labor :	26.25
Expense :	0.00
Phase Total :	26.25

Amount Due This Invoice

\$553.75

Fee :	69,200.00
Prior Billings :	68,646.25
Current Billings :	553.75
Total Billings :	69,200.00

*OK RS
9/16*

Continued on next page...

INVOICES DUE ON RECEIPT. Invoices outstanding over 30 days will have a Service Charge of 1 1/2% per month.

...Continued from previous page

Phase : 2 -- Sewer Stakeout and Easements

Labor Class	Hours/ Units	Rate	Amount
Senior Engineer	0.50	105.00	52.50
Labor Total:	0.50		52.50

Total Phase : 2 -- Sewer Stakeout and Easements	Labor :	\$52.50
	Expense :	\$0.00

Phase : 3 -- Property Boundary Survey Allocation

Labor Class	Hours/ Units	Rate	Amount
Senior Engineer	1.00	105.00	105.00
Labor Total:	1.00		105.00

Total Phase : 3 -- Property Boundary Survey Allocation	Labor :	\$105.00
	Expense :	\$0.00

Phase : 7 -- Bid Assistance

Labor Class	Hours/ Units	Rate	Amount
Senior Engineer	3.75	105.00	393.75
Labor Total:	3.75		393.75

Total Phase : 7 -- Bid Assistance	Labor :	\$393.75
	Expense :	\$0.00

Phase : 8 -- Additional Meetings

Labor Class	Hours/ Units	Rate	Amount
Senior Engineer	0.25	105.00	26.25
Labor Total:	0.25		26.25

Total Phase : 8 -- Additional Meetings	Labor :	\$26.25
	Expense :	\$0.00

Total Project : EGMA1107 -- HersheyMill & Reserve PS Div Des Per	Labor :	\$577.50
	Expense :	\$0.00

INVOICES DUE ON RECEIPT. Invoices outstanding over 30 days will have a Service Charge of 1 1/2% per month.

East Goshen Municipal Authority
EGMA1107 Invoice Summary
Invoice Date 08/21/2013

Project: EGMA1107
Pennoni Job No.: Hershey Mill & Reserve PS Div Des Per
Invoice No: **559122 FINAL INVOICE**
Invoice Period: 7/15/2013 to 8/11/2013
Initial Authorization: \$ 60,200.00 **Date:** 7/7/2011
Contract Amount: \$ 69,200.00
Previously Invoiced: \$ 68,646.25
Current Invoice: \$ 553.75
Invoiced to Date (\$): \$ 69,200.00
Invoiced to Date (%): 100%
Remaining Budget (\$): \$ -
Remaining Budget (%): 0%

Budget by Phase:

Phase No. *****
Phase Name: Hershey Mill & Reserve
Phase Budget: \$ 69,200.00
Previously Invoiced: \$ 68,646.25
Current Invoice: \$ 553.75
Invoiced to Date (\$): \$ 69,200.00
Invoiced to Date (%): 100%
Remaining Budget (\$): \$ -
Remaining Budget (%): 0%

Comments: Reserve PS Diversion bid assistance: coordinated resolution of insurance discrepancies, and reviewed contract documents (Form of Agreement, bonds, and insurance certificate).



INVOICE

Newark, DE
302-655-4451 Fax: 302-654-2895

Remit Payment To:
Pennoni Associates Inc.
P.O. Box 827328
Philadelphia, PA 19182-7328

East Goshen Municipal Authority
1580 Paoli Pike
West Chester, PA 19380-6199
Attention: Louis F. Smith, Twp Mgr.

Invoice # : 559123
Invoice Date : 08/21/2013
Project : EGMA1301
Project Name : 2013 General Services

For Services Rendered through: 8/11/2013

Finalized and submitted Reservoir Road Pump Station Act 537 Plan of Study and Task/Activity Report to PADEP; reviewed PADEP's comment on Applebrook groundwater monitoring and coordinated resolution with PADEP and Township; and prepared Engineer's Report for August MA meeting.

Phase : **** -- Professional Services

Total Phase : **** -- Professional Services

Labor : 1,160.25
Expense : 0.00
Phase Total : 1,160.25

Amount Due This Invoice

\$1,160.25

Fee : 10,000.00
Prior Billings : 7,638.50
Current Billings : 1,160.25
Total Billings : 8,798.75

Phase : **** -- Professional Services

Labor Class	Hours/		Amount
	Units	Rate	
Authority Engineer	2.00	110.00	220.00
Senior Engineer	6.00	105.00	630.00
Graduate Engineer	4.25	73.00	310.25
Labor Total:	12.25		1,160.25

Total Phase : **** -- Professional Services

Labor : \$1,160.25
Expense : \$0.00

Total Project : EGMA1301 -- 2013 General Services

Labor : \$1,160.25
Expense : \$0.00

o/c RS 9/6

East Goshen Municipal Authority
EGMA1301 Invoice Summary
Invoice Date 08/21/2013

Project: EGMA1301
Pennoni Job No.: 2013 General Services
Invoice No: 559123
Invoice Period: 7/15/2013 to 8/11/2013
Initial Authorization: \$ 10,000.00 **Date:** 1/1/2013
Contract Amount: \$ 10,000.00
Previously Invoiced: \$ 7,638.50
Current Invoice: \$ 1,160.25
Invoiced to Date (\$): \$ 8,798.75
Invoiced to Date (%): 88%
Remaining Budget (\$): \$ 1,201.25
Remaining Budget (%): 12%

Budget by Phase:

Phase No. ****
Phase Name: 2013 General Services
Phase Budget: \$ 10,000.00
Previously Invoiced: \$ 7,638.50
Current Invoice: \$ 1,160.25
Invoiced to Date (\$): \$ 8,798.75
Invoiced to Date (%): 88%
Remaining Budget (\$): \$ 1,201.25
Remaining Budget (%): 12%

Comments: Finalized and submitted Reservoir Road Pump Station Act 537 Plan of Study and Task/Activity Report to PADEP; reviewed PADEP's comment on Applebrook groundwater monitoring and coordinated resolution with PADEP and Township; and prepared Engineer's Report for August MA meeting.



INVOICE

Newark, DE
302-655-4451 Fax: 302-654-2895

Remit Payment To:
Pennoni Associates Inc.
P.O. Box 827328
Philadelphia, PA 19182-7328

East Goshen Municipal Authority
1580 Paoli Pike
West Chester, PA 19380-6199
Attention: Louis F. Smith, Twp Mgr.

Invoice # : 559124
Invoice Date : 08/21/2013
Project : EGMA1304
Project Name : Hershey Mill PS Div Construction
Ph

For Services Rendered through: 8/11/2013

Performed contract closeout tasks including on-site part time construction observation of restoration work, review of as-built plans, processing of Pay Application #2 (Final), and review of contract closeout documents (Contractor's Release, Statement of Surety, Maintenance Bond).

Phase : **** -- Professional Services

Total Phase : **** -- Professional Services

Labor :	607.50
Expense :	0.00
Phase Total :	607.50

Amount Due This Invoice

\$607.50

Fee :	20,000.00
Prior Billings :	16,941.50
Current Billings :	607.50
Total Billings :	17,549.00

Phase : **** -- Professional Services

Labor

Class	Hours/ Units	Rate	Amount
Senior Engineer	4.00	105.00	420.00
Technical Specialist	2.50	75.00	187.50
Labor Total:	6.50		607.50

Total Phase : **** -- Professional Services

Labor :	\$607.50
Expense :	\$0.00

Total Project : EGMA1304 -- Hershey Mill PS Div Construction Ph

Labor :	\$607.50
Expense :	\$0.00

OKRS 9/6

East Goshen Municipal Authority
EGMA1304 Invoice Summary
Invoice Date 08/21/2013

Project: EGMA1304
Pennoni Job No.: Hershey Mill PS Div Construction Phase
Invoice No: 559124
Invoice Period: 5/13/2013 to 7/14/2013
Initial Authorization: \$ 20,000.00 **Date:** 1/16/2013
Contract Amount: \$ 20,000.00
Previously Invoiced: \$ 16,941.50
Current Invoice: \$ 607.50
Invoiced to Date (\$): \$ 17,549.00
Invoiced to Date (%): 88%
Remaining Budget (\$): \$ 2,451.00
Remaining Budget (%): 12%

Budget by Phase:

Phase No. ****
Phase Name: Hershey Mill PS Div
Construction Phase
Phase Budget: \$ 20,000.00
Previously Invoiced: \$ 16,941.50
Current Invoice: \$ 607.50
Invoiced to Date (\$): \$ 17,549.00
Invoiced to Date (%): 88%
Remaining Budget (\$): \$ 2,451.00
Remaining Budget (%): 12%

Comments: Performed contract closeout tasks including on-site part time construction observation of restoration work, review of as-built plans, processing of Pay Application #2 (Final), and review of contract closeout documents
(Contractor's Release, Statement of Surety, Maintenance Bond).



INVOICE

Newark, DE
302-655-4451 Fax: 302-654-2895

Remit Payment To:
Pennoni Associates Inc.
P.O. Box 827328
Philadelphia, PA 19182-7328

East Goshen Municipal Authority
1580 Paoli Pike
West Chester, PA 19380-6199
Attention: Louis F. Smith, Twp Mgr.

Invoice # : 559125
Invoice Date : 08/21/2013
Project : EGMA1305
Project Name : Marydell PS Diversion Construction

For Services Rendered through: 8/11/2013

FINAL INVOICE

Performed contract closeout tasks including on-site part time construction observation of restoration work, review of as-built plans, processing of Change Order #2 and Pay Application #5 (Final), and review of contract closeout documents (Contractor's Release, Statement of Surety, Maintenance Bond).

Phase : **** -- Professional Services

Total Phase : **** -- Professional Services

Labor :	868.75
Expense :	0.00
Phase Total :	868.75

Amount Due This Invoice

\$868.75

Fee :	29,000.00
Prior Billings :	28,126.25
Current Billings :	868.75
Total Billings :	28,995.00

Phase : **** -- Professional Services

Labor Class	Hours/Units	Rate	Amount
Authority Engineer	0.50	110.00	55.00
Senior Engineer	2.75	105.00	288.75
Technical Specialist	7.00	75.00	525.00
Labor Total:	10.25		868.75

Total Phase : **** -- Professional Services

Labor :	\$868.75
Expense :	\$0.00

Total Project : EGMA1305 -- Marydell PS Diversion Construction

Labor :	\$868.75
Expense :	\$0.00

OK TRS 9/6

East Goshen Municipal Authority
EGMA1305 Invoice Summary
Invoice Date 08/21/2013

Project: EGMA1305
Pennoni Job No.: Marydell PS Diversion Construction
Invoice No: **59125 FINAL INVOICE**
Invoice Period: 7/15/2013 to 8/11/2013
Initial Authorization: \$ 20,000.00 **Date:** 1/16/2013
Contract Amount: \$ 29,000.00
Previously Invoiced: \$ 28,126.25
Current Invoice: \$ 868.75
Invoiced to Date (\$): \$ 28,995.00
Invoiced to Date (%): 100%
Remaining Budget (\$): \$ 5.00
Remaining Budget (%): 0%

Budget by Phase:

Phase Name: Marydell PS Diversion
Construction
Phase Budget: \$ 29,000.00
Previously Invoiced: \$ 28,126.25
Current Invoice: \$ 868.75
Invoiced to Date (\$): \$ 28,995.00
Invoiced to Date (%): 100%
Remaining Budget (\$): \$ 5.00
Remaining Budget (%): 0%

Comments: Performed contract closeout tasks including on-site part time construction observation of restoration work, review of as-built plans, processing of Change Order #2 and Pay Application #5 (Final), and review of contract closeout documents (Contractor's Release, Statement of Surety, Maintenance Bond).

Memo

To: Municipal Authority
From: Jon Altshul
Re: MA August Financial Reports
Date: September 4, 2013

The Municipal Authority recorded \$79,036.94 in expenses and \$70,006.55 in revenues in August, a difference of -\$9,030.39. The fund balance is now \$60,760.41. Hershey Mill Pump Station and Marydell Pump Station construction accounted for the majority of the monthly expenses. A complete list of all monthly expenses is provided.

Please also note that at its September 3rd meeting, the Township Board of Supervisors passed an ordinance to guarantee \$2.5 million in Municipal Authority debt issued through the Delaware Valley Regional Finance Authority for the various diversion projects, including the upcoming Reservoir Road project. Based on the current rate on 20-year DelVal notes of roughly 3.1%, we expect that sewer rates will need to increase by approximately \$0.51/thousand gallons to pay for associated debt service. A copy of the Municipal Authority resolution authorizing the notes, as well the loan commitment and the resolution certification are provided in your packet.

EAST GOSHEN TOWNSHIP
 1580 PAOLI PIKE
 WEST CHESTER, PA
 Municipal Authority
 August 2013

Account Title	Acct #	Annual Budget	Month To Date Actual	Year To Date Actual
MUNICIPAL AUTHORITY BEGINNING FUND BALANCE				
			69,790.80	

RCSTP BUDGET

REVENUE				
INTEREST EARNED - RCSTP EXPANSION	07341 1020	50.00	4.25	30.10
GRANT REVENUE	07392 0800	0.00	0.00	0.00
TOTAL REVENUE		50.00	4.25	30.10

EXPENSES				
R.C.-CAP. PROJ.-ENGINEER	07424 7451	0.00	0.00	0.00
R.C. CAP EXPANSION GEN'L CONTRACTOR	07424 7452	0.00	0.00	0.00
R.C. CAP EXPANSION - ELECTRICAL	07424 7453	0.00	0.00	0.00
R.C. CAP EXP CONTINGENCY CAPITAL	07424 7454	0.00	0.00	0.00
R.C. CAP EXP CONTINGENCY ONGOING	07424 7455	0.00	0.00	0.00
R.C. CAP EXP ADDITIONAL CONTINGENCY	07424 7456	0.00	0.00	0.00
TRANSFER TO AUTHORITY CAP FUND	07492 0990	992,470.00	0.00	0.00
TOTAL EXPENSES		992,470.00	0.00	0.00
RCSTP NET RESULT			(992,420.00)	4.25
				30.10

EAST GOSHEN TOWNSHIP
 1580 PAOLI PIKE
 WEST CHESTER, PA
 Municipal Authority
 August 2013

Account Title	Acct #	Annual Budget	Month To Date Actual	Year To Date Actual
OPERATING BUDGET				
REVENUE				
INTEREST EARNINGS	07341 1000	50.00	2.30	22.15
C.C. TAPPING FEES	07364 1100	128,000.00	0.00	0.00
R.C.TAPPING FEES	07364 1110	2,000.00	0.00	11,148.00
CONNECTION FEES - SEWER	07364 1130	0.00	0.00	1,689.64
MISCELLANEOUS REVENUE	07380 1000	1,000.00	0.00	423.36
TRANSFER FROM SEWER OPERATING	07392 0500	121,696.00	0.00	39,000.00
TOTAL REVENUE		252,746.00	2.30	52,283.15
EXPENSES				
ADMINISTRATIVE WAGES	07424 1400	33,547.00	0.00	15,960.72
MISCELLANEOUS EXPENSE	07424 3000	5,000.00	0.00	1,450.00
MUNIC.AUTH.-AUDITING	07424 3110	8,843.00	0.00	8,100.00
ENGINEERING SERVICES	07424 3130	35,000.00	1,843.75	30,986.00
LEGAL SERVICES	07424 3140	7,000.00	240.00	10,661.02
M.C.-DVRFA-DEBT SERVICE	07471 1000	20,720.00	0.00	0.00
M.C.-DVRFA-INTEREST PAYMN	07472 1000	6,003.00	0.00	0.00
M.C.-DVRFA-INTEREST PAYMN	07472 1010	5,583.00	0.00	0.00
TOTAL EXPENSES		121,696.00	2,083.75	67,157.74
OPERATING NET RESULT		131,050.00	(2,081.45)	(14,874.59)

EAST GOSHEN TOWNSHIP
 1580 PAOLI PIKE
 WEST CHESTER, PA
 Municipal Authority
 August 2013

Account Title	Acct #	Annual Budget	Month To Date Actual	Year To Date Actual
CAPITAL BUDGET				
REVENUE				
LOAN PROCEEDS-SEWER PROJECT	07392 0804	992,470.00	0.00	0.00
TRANSFER FROM SEWER CAP RESERVE	07392 0900	829,769.00	70,000.00	563,000.00
TOTAL REVENUE		1,822,239.00	70,000.00	563,000.00
EXPENSES				
MARYDELL PUMP STATION - ENGINEER	07425 1000	31,000.00	5,324.75	50,199.71
MARYDELL PUMP STATION -CONSTRUCTION	07425 2000	250,000.00	43,113.31	228,317.41
MANHOLE COVER REPLACEMENTS	07424.7405	17,000.00	0.00	
C.C. CAPITAL - COLLECTION	07424.7420	100,000.00	0.00	
LOCHWOOD ABANDONMENT ENGINEER	07424 7475	0.00	0.00	5,562.75
LOCHWOOD ABANDONMENT CONSTRUCTION	07424 7476	55,769.00	4,050.00	49,796.16
LOCHWOOD ELIMINATION PHASE 2	07424 7477	0.00	0.00	12,165.62
HERSHEY MILL STATION - ENGINEER	07426 1000	35,000.00	1,653.75	24,434.99
HERSHEY MILL STATION - CONSTRUCTION	07426 2000	180,000.00	22,097.13	159,762.62
RESERVE PUMP STATION - ENGINEER	07427 1000	25,000.00	714.25	19,040.26
RESERVE PUMP STATION - CONSTRUCTION	07427 2000	125,000.00	0.00	0.00
RESERVOIR PUMP STATION - ENGINEER	07428 1000	0.00	0.00	0.00
RESERVOIR PUMP STATION CONSTRUCTION	07428 2000	0.00	0.00	0.00
TOTAL EXPENSES		818,769.00	76,953.19	549,279.52
CAPITAL NET RESULT		1,003,470.00	(6,953.19)	13,720.48
MUNICIPAL AUTHORITY ENDING FUND BALANCE			60,760.41	

MGRP18 run by BRIAN 2 : 51 PM

Acct #	Per	Src	Trx #	Debits	Credits	Beg/End Bal	Date	Check/Ref #	ID #	Name/Description
07341-1000						0.00				
			INTEREST EARNINGS							
		1301	JE 36010		0.74		02/05/13	INTEREST		INTEREST EARNED JANUARY 2013 07 FUND
				0.00	0.74	-0.74				
		1302	36396		0.48		03/04/13	INTEREST		INTEREST EARNED FEB. 2013 07 FUND
				0.00	0.48	-1.22				
		1303	36759		0.92		04/02/13	INTEREST		INTEREST EARNED MARCH 2013 07 FUND
				0.00	0.92	-2.14				
		1304	37177		3.20		05/01/13	INTEREST		INTEREST EARNED APRIL 2013 07100.1000
			37178		5.60		05/01/13	INTEREST		INTEREST EARNED APRIL 2013 07 CONSTRUCTION FUND
				0.00	8.80	-10.94				
		1305	37710		1.52		06/04/13	INTEREST		INTEREST EARNED MAY 2013 07 FUND
				0.00	1.52	-12.46				
		1306	38150		5.24		07/02/13	INTEREST		INTEREST EARNED JUNE 2013 07 FUND
				0.00	5.24	-17.70				
		1307	38593		2.15		08/02/13	INTEREST		INTEREST EARNED JULY 2013 07100.1000
				0.00	2.15	-19.85				
		1308	39012		2.30		09/03/13	INTEREST		INTEREST EARNED AUGUST 2013 07100.1000
				0.00	2.30	-22.15				
				0.00	22.15	-22.15				
07341-1020						0.00				
			INTEREST EARNED - RCSTP EXPANSION							
		1301	36011		3.97		02/05/13	INTEREST		INTEREST EARNED JANUARY 2013 07 CONSTRUCTION FUND
				0.00	3.97	-3.97				
		1302	36397		4.91		03/04/13	INTEREST		INTEREST EARNED FEB.2013 07 CONSTRUCTION FUND
				0.00	4.91	-8.88				
		1303	36760		3.97		04/02/13	INTEREST		INTEREST EARNED MARCH 2013 07 CONSTRUCTION FUND
				0.00	3.97	-12.85				

MGRP18 run by BRIAN 2 : 51 PM

Acct #	Per	Src Trx #	Debits	Credits	Beg/End Bal	Date	Check/Ref #	ID #	Name/Description
07341-1020	1305 JE	37711		22.26		06/04/13	INTEREST		INTEREST EARNED MAY 2013 07 CONSTRUCTION FUND
			0.00	22.26	-35.11				
1306	37953		17.88			06/20/13	ADJUSTMENT		ADJUSTMENT TO MAY 2013 INTEREST
		38151		3.96		07/02/13	INTEREST		INTEREST EARNED JUNE 2013 07 CONSTRUCTION FUND
			17.88	3.96	-21.19				
1307	38594			4.66		08/02/13	INTEREST		INTEREST EARNED JULY 2013 07 CONSTRUCTION FUND
			0.00	4.66	-25.85				
1308	39013			4.25		09/03/13	INTEREST		INTEREST EARNED AUGUST 2013 07 CONSTRUCTION FUND
			0.00	4.25	-30.10				
			17.88	47.98	-30.10				
07364-1100	C.C. TAPPING FEES				0.00				
1305 CR	37610		3,600.00	3,600.00		05/29/13	94 22	4518 1	CHESTER SPRINGS DEVELOPMENT CO
			3,600.00	3,600.00	0.00				
			3,600.00	3,600.00	0.00				
07364-1110	R.C. TAPPING FEES				0.00				
1301 JE	35931		2,000.00			01/30/13	REV TRX		REVERSE TRX #32779 TAP IN FEE FOR 913 SORRELL HILL
		35934		2,000.00		01/30/13	REV TRX		RE-REVERSE TRX 35931 FOR 913 SORRELL HILL TAP IN FEES
			2,000.00	2,000.00	0.00				
1303 RE	36430			2,000.00		03/05/13	36430 1		TAP IN FEE - 916 SORRELL HILL
		36431		2,000.00		03/05/13	36431 1		TAP IN FEE - 911 SORRELL HILL
			0.00	4,000.00	-4,000.00				
1305	37562			7,148.00		05/23/13	37562 1		TAP IN FEE FOR 1598 WINEBERRY
			0.00	7,148.00	-11,148.00				
			2,000.00	13,148.00	-11,148.00				
07364-1130	CONNECTION FEES - SEWER				0.00				
1302 CR	36075			423.00		02/08/13	264	7195 1	JACOBS, ROBERT & CHERYL
				423.00		02/08/13	755	7193 1	GEORGE SMITH & CHRISTINA CONLE
	***		0.00	846.00	***				
		36147		423.00		02/13/13	11	6577 1	PAPPANO, JOSEPH & PATRICIA

MGRP18 run by BRIAN 2 : 51 PM

Acct #	Per	Src	Trx #	Debits	Credits	Beg/End Bal	Date	Check/Ref #	ID #	Name/Description
07364-1130	1302	CR	36147		421.00		02/13/13	11	7196	1 PAPPANO, JOSEPH & PATRICIA
			***	0.00	844.00	***				
			36193		423.00		02/15/13	2173	7194	1 STOFFLET, MICHAEL
	JE		36174	282.24			02/14/13	PINE ROCK		ANNUAL PINE ROCK INSTALLMENT
			36194	141.12			02/15/13	PINE ROCK		ANNUAL PINE ROCK INSTALLMENT
				423.36	2,113.00	-1,689.64				
				423.36	2,113.00	-1,689.64				
07380-1000	MISCELLANEOUS REVENUE					0.00				
			36174		282.24		02/14/13	PINE ROCK		ANNUAL PINE ROCK INSTALLMENT
			36194		141.12		02/15/13	PINE ROCK		ANNUAL PINE ROCK INSTALLMENT
				0.00	423.36	-423.36				
				0.00	423.36	-423.36				
07392-0500	TRANSFER FROM SEWER OPERATING					0.00				
	1305		37366		39,000.00		05/14/13	DEPOSIT		DEPOSIT FUNDS FROM SEWER TO MA TO COVER OPERATING EXPENSE
				0.00	39,000.00	-39,000.00				
				0.00	39,000.00	-39,000.00				
07392-0900	TRANSFER FROM SEWER CAP RESERVE					0.00				
	1302		36187		30,000.00		02/15/13	XFER		XFER \$ FROM 9100.1000 TO 7100.1000 TO COVER MA EXPENSES
				0.00	30,000.00	-30,000.00				
	1304		36841		50,000.00		04/08/13	XFER		XFER \$ FROM 9100.1000 TO 7100.1000
			36905		60,000.00		04/11/13	XFER		XFER \$ FROM 9100.1000 TO 7100.1000
				0.00	110,000.00	-140,000.00				
	1305		37361		53,000.00		05/14/13	XFER		XFER FUNDS FROM 9100.1000 TO 7100.1000 TO COVER CAP.EXP.
				0.00	53,000.00	-193,000.00				
	1306		37789		250,000.00		06/10/13	DEPOSIT		DEPOSIT TO MUN.AUTHORITY ACCT. 7100.1000
				0.00	250,000.00	-443,000.00				
	1307		38158		50,000.00		07/02/13	XFER		XFER \$ TO COVER MUN.AUTHORITY CAPITAL EXPENSES
				0.00	50,000.00	-493,000.00				
	1308		38715		70,000.00		08/13/13	XFER		XFER FROM SEWER CAPITAL RES. TO MUNICIPAL AUTHORITY

MGRF18 run by BRIAN 2 : 52 PM

Acct #	Per	Src	Trx #	Debits	Credits	Beg/End Bal	Date	Check/Ref #	ID #	Name/Description
				0.00	70,000.00	-563,000.00				
				0.00	563,000.00	-563,000.00				
07424-1400						0.00				
	1303	CD	36711	7,980.36			03/28/13	2166	425	EAST GOSHEN TOWNSHIP 1ST QTR.2013 REIMBURMNT TO GENE FUND
				7,980.36	0.00	7,980.36				
	1306		38067	7,980.36			06/27/13	2189	425	EAST GOSHEN TOWNSHIP 2ND QTR. 2013 REIMBURSEMENT TO GENERAL FUND
				7,980.36	0.00	15,960.72				
				15,960.72	0.00	15,960.72				
07424-3000						0.00				
	1301		35598	500.00			01/03/13	2153	2737	DEP - COMMONWEALTH OF PA NPDES PERMIT - 2013 MINOR SEWAGE FACILITY
			35783	950.00			01/18/13	2158	2132	PENNSYLVANIA MUNICIPAL AUTHORITIES ASSOC 2013 ACTIVE MEMBERSHIP DUES
				1,450.00	0.00	1,450.00				
				1,450.00	0.00	1,450.00				
07424-3110						0.00				
	1307		38272	8,100.00			07/12/13	2195	808	MAILLIE FALCONIERO & CO. EXAM.OF MA FINANCIAL STMTS. - 20
				8,100.00	0.00	8,100.00				
				8,100.00	0.00	8,100.00				
07424-3130						0.00				
	1301		35695	3,264.75			01/15/13	2156	1052	PENNONI ASSOCIATES INC. SERV.THRU 12/9/12 2012 GEN.SERV
				3,264.75	0.00	3,264.75				
	1302		36119	1,538.75			02/12/13	2162	1052	PENNONI ASSOCIATES INC. SERV.THRU 1/13/13 GEN.SERVICES 2
				1,538.75	0.00	4,803.50				
	1304		36889	6,695.25			04/10/13	2171	1052	PENNONI ASSOCIATES INC. SERVICES THRU 3/17/13 GENERAL SE
			36890	5,560.75			04/10/13	2173	1052	PENNONI ASSOCIATES INC. SERVICE THRU 2/20/13 GENERAL SER

MGRP18 run by BRIAN 2 : 52 PM

Acct #	Per	Src	Trx #	Debits	Credits	Beg/End Bal	Date	Check/Ref #	ID #	Name/Description
				12,256.00	0.00	17,059.50				
1305		37357		8,215.25			05/14/13	2175	1052	PENNONI ASSOCIATES INC. SERV.THRU 4/14/13 GENERAL SERVIC
1306		37787		8,215.25	0.00	25,274.75	06/10/13	2186	1052	PENNONI ASSOCIATES INC. SERVICE THRU 5/12/13 2013 GENER
1307		38122		795.25	0.00	26,070.00	07/02/13	2192	1052	PENNONI ASSOCIATES INC. SERVICES THRU 6/16/13 GENERAL SE
1308		38761		3,072.25	0.00	29,142.25	08/15/13	2205	1052	PENNONI ASSOCIATES INC. GENERAL SERVICES
				1,843.75	0.00	30,986.00				
				30,986.00	0.00	30,986.00				
07424-3140			LEGAL SERVICES			0.00				
1301		35695		3,289.10			01/15/13	2155	528	GAWTHROP GREENWOOD & HALSTED LEGAL SERV. 11/9-11/30/12 GEN.AU
1302		36119		3,289.10	0.00	3,289.10	02/12/13	2161	528	GAWTHROP GREENWOOD & HALSTED LEGAL SERVICE - JAN. 2013 GEN.AU
1304		36889		1,406.80	0.00	4,695.90	04/10/13	2170	528	GAWTHROP GREENWOOD & HALSTED LEGAL SERVICES 2/4-2/25/13 GEN.A
1305		37357		1,661.12	0.00	6,357.02	05/14/13	2174	528	GAWTHROP GREENWOOD & HALSTED LEGAL SERVICES 3/7-3/25/13 GEN.A
1307		38122		3,364.00	0.00	9,721.02	07/02/13	2191	528	GAWTHROP GREENWOOD & HALSTED LEGAL SERV. 5/13-5/29/13 GEN.AUT
1308		38761		700.00	0.00	10,421.02	08/15/13	2204	528	GAWTHROP GREENWOOD & HALSTED LEGAL SERVICES 6/21-6/26/13
				240.00	0.00	10,661.02				
				10,661.02	0.00	10,661.02				
07424-7475			LOCHWOOD ABANDONMENT ENGINEER			0.00				

MGRF18 run by BRIAN 2 : 52 PM

Acct #	Per	Src	Trx #	Debits	Credits	Beg/End Bal	Date	Check/Ref #	ID #	Name/Description
		1301	CD 35695	511.50			01/15/13	2156	1052	PENNONI ASSOCIATES INC. SERVICES THRU 12/9/12 HERSHEY M PUMP STATION MUFFIN MONSTER
				511.50	0.00	511.50				
		1302	36119	574.50			02/12/13	2162	1052	PENNONI ASSOCIATES INC. SERV. THRU 1/13/13 H.MILL PS MUF MONSTER DESIGN
				574.50	0.00	1,086.00				
		1305	37357	47.50			05/14/13	2175	1052	PENNONI ASSOCIATES INC. SERV. THRU 4/14/13 H.MILL PS MUFF MONSTER'
				47.50	0.00	1,133.50				
		1306	37787	4,429.25			06/10/13	2186	1052	PENNONI ASSOCIATES INC. SERVICE THRU 5/12/13 H.M.PS DIV CONSTRUCTION
				4,429.25	0.00	5,562.75				
				5,562.75	0.00	5,562.75				
07424-7476		LOCHWOOD	ABANDONMENT CONSTRUCTION			0.00				
		1301	35598	246.01			01/03/13	2152	317	CONTRACTOR'S CHOICE ORANGE SAFETY FENCE, STAKES & PA
			35695	1,482.40			01/15/13	2154	425	EAST GOSHEN TOWNSHIP LOCHWOOD PLANT CLOSING COSTS-LAB
			35698	-1,482.40			01/15/13	2154	425	EAST GOSHEN TOWNSHIP VOID CK. 2154 - DUPLICATE PAYMEN
				246.01	0.00	246.01				
		1304	36840	30,769.00			04/08/13	2169	2128	JWC ENVIRONMENTAL CONTROLLER ASSEMBLY, HPP, & REP SUPPLIED EQUIPMENT
				30,769.00	0.00	31,015.01				
		1305	37649	424.00			05/31/13	2180	489	FISHER & SON COMPANY INC 4 50LB BAGS - COMMERCIAL SEED
				111.65			05/31/13	2181	739	KNOX EQUIPMENT COMPANY MULCHER RENTAL 5/16-5/17/13
				5,560.00			05/31/13	2182	800	MACANGA INC. TRUCKS & TRACK HOE USE - HAUL DI FROM WESTTOWN WAY 5/13 & 5/14/13
				8,010.75			05/31/13	2183	1876	RANSOME RENTAL COMPANY LP STANDARD TRACK RENTAL 5/13-5/20/
			***	14,106.40	0.00	***				
				14,106.40	0.00	45,121.41				
		1306	37771	99.75			06/07/13	2184	1849	HICKS BROTHERS LLC 21 SMALL BALES STRAW

MGRP18 run by BRIAN 2 : 52 PM

Acct #	Per	Src	Trx #	Debits	Credits	Beg/End Bal	Date	Check/Ref #	ID #	Name/Description
07424-7476	1306	CD	38067	525.00			06/27/13	2188	1556	CONVERY, MATTHEW GPS - RIDLEY CREEK LINE - LOCHWO CHASE AND OPEN SPACE
				624.75	0.00	45,746.16				
	1308		38665	4,050.00			08/09/13	2198	1556	CONVERY, MATTHEW GPS OF R.C. SEWER LINE- 6/24 & 6
				4,050.00	0.00	49,796.16				
				49,796.16	0.00	49,796.16				
07424-7477		LOCHWOOD	ELIMINATION PHASE 2			0.00				
	1301		35872	379.90			01/24/13	2159	2762	A.J. BLOSENSKI INC. 30 YDS. ROLLOFF HAULING & LANDFI FEE
				379.90	0.00	379.90				
	1302		36189	200.00			02/15/13	2165	2762	A.J. BLOSENSKI INC. 30 YARD ROLLOFF HAULING FEE
		JE	36105		379.90		02/11/13	VOID CHECK		VOID CK. 2159 - OVERCHARGED BY VENDOR - RETURNED CHECK
				200.00	379.90	200.00				
	1303	CD	36711	1,894.91			03/28/13	2167	425	EAST GOSHEN TOWNSHIP 1/1-3/27/13 REIMBURSE GENERAL FU FOR LOCHWOOD PLANT CLOSING LABOR
				1,894.91	0.00	2,094.91				
	1306		38067	10,070.71			06/27/13	2190	425	EAST GOSHEN TOWNSHIP 2ND QTR.2013 REIMBURSMT TO GENER RE: LOCHWOOD PLANT CLOSING LABOR
				10,070.71	0.00	12,165.62				
				12,545.52	379.90	12,165.62				
07425-1000		MARYDELL	PUMP STATION - ENGINEER			0.00				
	1301		35695	5,493.75			01/15/13	2156	1052	PENNONI ASSOCIATES INC. SERVICES THRU 12/9/12 MARYDELL
				5,493.75	0.00	5,493.75				
	1302		36119	5,988.75			02/12/13	2162	1052	PENNONI ASSOCIATES INC. SERV.THURU 1/13/13 MARYDELL PS
				5,988.75	0.00	11,482.50				
	1304		36889	6,863.00			04/10/13	2171	1052	PENNONI ASSOCIATES INC. SERVICES THRU 3/17/13 MARYDELL P
			36890	2,167.75			04/10/13	2173	1052	PENNONI ASSOCIATES INC. SERVICE THRU 2/20/13 MARYDELL

MGRP18 run by BRIAN

2 : 52 PM

Acct #	Per	Src Trx #	Debits	Credits	Beg/End Bal	Date	Check/Ref #	ID #	Name/Description
			9,030.75	0.00	20,513.25				
1305		37357	7,168.00			05/14/13	2175	1052	PENNONI ASSOCIATES INC. SERV. THRU 4/14/13 MARYDELL PS
		37548	4,089.21			05/22/13	2178	3084	PA DEPARTMENT OF TRANSPORTATION MARY DELL DIVERSION INSPECTION
			11,257.21	0.00	31,770.46				
1306		37787	7,301.00			06/10/13	2186	1052	PENNONI ASSOCIATES INC. SERVICE THRU 5/12/13 MARYDELL P DIVERSION
			7,301.00	0.00	39,071.46				
1307		38122	5,803.50			07/02/13	2192	1052	PENNONI ASSOCIATES INC. SERV. THRU 6/16/13 MARYDELL PS DI
			5,803.50	0.00	44,874.96				
1308		38761	1,653.75			08/15/13	2205	1052	PENNONI ASSOCIATES INC. MARYDELL PS
		38881	3,671.00			08/23/13	2206	3084	PA DEPARTMENT OF TRANSPORTATION HIGHWAY OCCUPANCY PERMITS - MARYD DIVERSION
			5,324.75	0.00	50,199.71				
			50,199.71	0.00	50,199.71				
07425-2000					0.00				MARYDELL PUMP STATION -CONSTRUCTION
1304		36746	2,351.35			04/01/13	2168	3050	PECO ENERGY TWO MAN PECO CREW- BRACE PECO PO
		36889	20,700.00			04/10/13	2172	3059	PLY-MAR CONSTRUCTION CO. INC. MARYDELL PUMP STATION DIVERSION
			23,051.35	0.00	23,051.35				
1305		37357	79,704.00			05/14/13	2176	3059	PLY-MAR CONSTRUCTION CO. INC. APP.#2 MARYDELL PS DIVERSION
			79,704.00	0.00	102,755.35				
1306		37787	50,608.00			06/10/13	2187	3059	PLY-MAR CONSTRUCTION CO. INC. MARYDELL PS DIVERSION APP.3
			50,608.00	0.00	153,363.35				
1307		38122	31,620.75			07/02/13	2193	3059	PLY-MAR CONSTRUCTION CO. INC. MARYDELL DIVERSION - APP.#4
		38181	220.00			07/03/13	2194	765	LENNI ELECTRIC CORPORATION MARYDELL STATION FEED
			31,840.75	0.00	185,204.10				
1308		38571	1,980.00			08/01/13	2197	1022	PATTERSON, MICHAEL J. WOOD STOCKADE FENCE INSTALLATION

MGRP18 run by BRIAN 2 : 52 PM

Acct #	Per	Src	Trx #	Debits	Credits	Beg/End Bal	Date	Check/Ref #	ID #	Name/Description
07425-2000	1308	CD	38746	41,133.31			08/15/13	2199	3059	PLY-MAR CONSTRUCTION CO. INC. MARYDELL PUMP STATION DIVERSION
				43,113.31	0.00	228,317.41				
				228,317.41	0.00	228,317.41				
07426-1000						0.00				
	1301		35695	2,047.12			01/15/13	2156	1052	PENNONI ASSOCIATES INC. SERV. THRU 12/9/12 HERSHEY MILL
			35783	250.00			01/18/13	2157	263	CHESTER COUNTY CONSERVATION DISTRICT PERMIT FEE - HERSHEY MILL DAM
				2,297.12	0.00	2,297.12				
	1302		36119	2,600.00			02/12/13	2160	2911	EARTHCORE SERVICES LLC MOBILIZATION ATV RIG-HMPS DIVERS
				2,932.62			02/12/13	2162	1052	PENNONI ASSOCIATES INC. SERV. THRU 1/13/13 HERSHEY MILL
			***	5,532.62	0.00	***				
				5,532.62	0.00	7,829.74				
	1304		36889	3,593.75			04/10/13	2171	1052	PENNONI ASSOCIATES INC. SERVICES THRU 3/17/13 HERSHEY MI
			36890	2,516.50			04/10/13	2173	1052	PENNONI ASSOCIATES INC. SERVICE THRU 2/20/13 HRSHEY MILL
				6,110.25	0.00	13,939.99				
	1305		37357	1,539.75			05/14/13	2175	1052	PENNONI ASSOCIATES INC. SERV. THRU 4/14/13 HERSHEY MILL
				1,539.75	0.00	15,479.74				
	1307		38122	7,301.50			07/02/13	2192	1052	PENNONI ASSOCIATES INC. SERV. THRU 6/16/13 HERSHEY MILL
				7,301.50	0.00	22,781.24				
	1308		38761	1,653.75			08/15/13	2205	1052	PENNONI ASSOCIATES INC. HERSHEY MILL PS
				1,653.75	0.00	24,434.99				
				24,434.99	0.00	24,434.99				
07426-2000						0.00				
	1306		37787	135,130.49			06/10/13	2185	3092	DELAWARE VALLEY UTILITY CONTRACTORS INC. HERSHEY MILL PROJ. APPLICATION 1
				135,130.49	0.00	135,130.49				
	1307		38402	2,535.00			07/19/13	2196	425	EAST GOSHEN TOWNSHIP - GENERAL REIMBURSE GEN. FUND FOR MA CREDI CARD PURCHASE - HERSHEY MILL

MGRF18 run by BRIAN 2 : 52 PM

Acct #	Per	Src Trx #	Debits	Credits	Beg/End Bal	Date	Check/Ref #	ID #	Name/Description
			2,535.00	0.00	137,665.49				
1308		38761	22,097.13			08/15/13	2203		3092 DELAWARE VALLEY UTILITY CONTRACTORS INC. HERSHEY MILL PROJ. APPLICATION 2
			22,097.13	0.00	159,762.62				
			159,762.62	0.00	159,762.62				
07427-1000					0.00				
			RESERVE PUMP STATION - ENGINEER						
1301		35695	2,047.13			01/15/13	2156		1052 PENNONI ASSOCIATES INC. SERV. THRU 12/9/12 RESERVE PS
			2,047.13	0.00	2,047.13				
1302		36119	2,932.63			02/12/13	2162		1052 PENNONI ASSOCIATES INC. SERV. THRU 1/13/13 RESERVE PS
			1,000.00			02/12/13	2163		3027 SCHRODER, JOHN SEWER RIGHT OF WAY
			1,000.00			02/12/13	2164		3029 WILLOW POND HOMEOWNERS ASSOCIATION SEWER RIGHT OF WAY
		***	4,932.63	0.00	***				
			4,932.63	0.00	6,979.76				
1304		36889	1,013.25			04/10/13	2171		1052 PENNONI ASSOCIATES INC. SERVICES THRU 3/17/13 RESERVE PU
		36890	2,516.50			04/10/13	2173		1052 PENNONI ASSOCIATES INC. SERVICE THRU 2/20/13 RESERVE PS
			3,529.75	0.00	10,509.51				
1305		37357	563.25			05/14/13	2175		1052 PENNONI ASSOCIATES INC. SERV. THRU 4/14/13 RESERVE PS
			1,455.00			05/14/13	2177		3075 SPRING MEADOWS HOMEOWNERS ASSOCIATION SEWER RIGHT OF WAY
		***	2,018.25	0.00	***				
		37649	2,600.00			05/31/13	2179		2911 EARTHCORE SERVICES LLC ATV RIG PROBES - 1 DAY
			4,618.25	0.00	15,127.76				
1306		37787	427.50			06/10/13	2186		1052 PENNONI ASSOCIATES INC. SERVICE THRU 5/12/13 - RESERVE P
			427.50	0.00	15,555.26				
1307		38122	2,770.75			07/02/13	2192		1052 PENNONI ASSOCIATES INC. SERVICES THRU 6/16/13 RESERVE PS
			2,770.75	0.00	18,326.01				
1308		38761	714.25			08/15/13	2205		1052 PENNONI ASSOCIATES INC. RESERVE PS
			714.25	0.00	19,040.26				

MGRP18 run by BRIAN 2 : 52 PM

Acct #	Per	Src Trx #	Debits	Credits	Beg/End Bal	Date	Check/Ref #	ID #	Name/Description
			19,040.26	0.00	19,040.26				
Beg Bal		0.00	622,858.40	621,734.39	1124.00999928				

SEPTEMBER 2013
EAST GOSHEN MUNICIPAL AUTHORITY GOALS

ON-GOING

1. Submit an article for each newsletter.
 - a. Need by 3/1/13 - **Jack**
 - b. Need by 6/1/13 - **Dana**
 - c. Need by 9/1/13 - **Kevin**
 - d. Need by 12/1/13

2. Attend West Goshen Meetings quarterly – more often if needed.
 - a. 1st Quarter (March) - **Ed**
 - b. 2nd Quarter (June) - **Kevin**
 - c. 3rd Quarter (September) - **Ed**
 - d. 4th Quarter (December)

3. Respond to capacity requests in 45 days or less.

4. Continue to implement I & I Plan - March Report distributed in May

5. Operate RCSTP in compliance with NPDES Permit - January, February, March, April, May, **July**

PROJECTS

1. Lockwood – Final Restoration – Area within fence has been graded and seeded and the driveway has been removed.

2. Marydell Pump Station – Construction –Project Completed

3. Hershey Mill Pump Station – Construction – Project Completed

4. Reserve Pump Station – Construction – **Agreement executed 8/12, notice to proceed issued 8/14.**

5. Borrowing – Reimburse Capital Reserve for design and construction funds. . Submitted loan application. **Board of Supervisors authorized borrowing on 9/3.**

Rick Smith

From: Michael Ellis <MEllis@Pennoni.com>
Sent: Wednesday, September 04, 2013 3:33 PM
To: rsmith@eastgoshen.org
Subject: General Engineering budget request

Rick,

As discussed at the last Authority meeting, additional budget will be needed for the General Engineering task (Pennoni project number EGMA1301) to cover general engineering work for the remainder of the year. As of today, September 4, there is \$437 remaining in that budget (\$9,563 of \$10,000 has been utilized). The reason we are approaching budget on this activity with four months remaining in the year is that the work on the Reservoir Rd Cost Estimate Update and the follow-up DEP Task-Activity Report was charged to this activity as directed. That work totaled approximately \$3,000.

We therefore request an additional \$3,000 be added to the General Engineering budget to cover attendance at MA meetings, preparation of Engineer's Reports, and other limited general engineering tasks through the remainder of calendar year 2013.

Please call if you have any questions or need additional information.

Thanks,
Mike

Michael J. Ellis, PE

Pennoni Associates Inc.
Christiana Executive Campus
121 Continental Drive, Suite 207
Newark, DE 19713-4310
Office 302-655-4451 x5236 | Direct 302-351-5236
Fax 302-654-2895 | Mobile 302-561-4235
<http://www.pennoni.com> | mellis@pennoni.com

Consulting Engineers providing...

*Environmental – Geotechnical – Inspection & Testing – Land Development – MEP
Landscape Architecture – Structural – Survey – Transportation – Water/Wastewater*

9-5-13

RECOMMEND YOU AUTHORIZE
THE \$ 3,000.

RS

RESOLUTION NO. ____
EAST GOSHEN MUNICIPAL AUTHORITY
CHESTER COUNTY, PENNSYLVANIA

A RESOLUTION AUTHORIZING THE ISSUANCE OF THE \$2,500,000 GUARANTEED SEWER REVENUE NOTES, 2013 SERIES (COLLECTIVELY, THE "2013 NOTES"), BY THE EAST GOSHEN MUNICIPAL AUTHORITY; APPROVING CERTAIN CAPITAL PROJECTS; APPROVING THE ISSUANCE AND NEGOTIATED SALE OF THE 2013 NOTES TO THE DELAWARE VALLEY REGIONAL FINANCE AUTHORITY; APPROVING THE FORMS OF THE LOAN DOCUMENTS AND AUTHORIZING AND DIRECTING THE EXECUTION AND DELIVERY OF ALL DOCUMENTS NECESSARY TO ISSUE THE 2013 NOTES; SETTING THE MAXIMUM INTEREST RATE AND THE PRINCIPAL AMORTIZATION SCHEDULE; AND REPEALING INCONSISTENT RESOLUTIONS.

WITNESSETH:

WHEREAS, the East Goshen Municipal Authority (the "Authority") has been incorporated pursuant to the *Municipality Authorities Act*, 53 Pa. C.S. §5601 *et seq* (the "*Authorities Act*") by appropriate actions of the Board of Supervisors of the Township of East Goshen (the "Township"); and

WHEREAS, the Authority owns and operates certain facilities for the collection, transmission, treatment, and disposal of sanitary sewage (the "Sewer System") that benefit the health and welfare of residents of the Township; and

WHEREAS, the Authority assesses sewer rentals, rates, and other charges (the "Sewer Revenues") to fund the costs of operation and maintenance and any debt service costs of the Sewer System; and

WHEREAS, the Township and the Authority entered into a certain guaranty agreement (the “1998 Guaranty”) dated as of November 9, 1998, and a certain guaranty agreement (the “2008 Guaranty”), dated as of December 15, 2008, under which the Township pledged its full faith, credit, and taxing power to guarantee the payment of the principal of and interest on the Guaranteed Sewer Revenue Notes, 1998 Series and the Guaranteed Sewer Revenue Notes, 2008 Series; and

WHEREAS, the Authority has determined to undertake certain capital projects to improve the Sewer System (the “2013 Improvements”), and the Authority and Township have obtained preliminary estimates of the costs of the 2013 Improvements from persons qualified by experience; and

WHEREAS, the 2013 Improvements shall be for the benefit and use of the general public, and no private party shall have any special legal entitlement to the beneficial use of the 2013 Improvements, through a lease, management contract, or any other arrangement that would result in a private business use under the *Internal Revenue Code of 1986*, as amended (the “Code”); and

WHEREAS, the Authority has determined to authorize and issue the Guaranteed Sewer Revenue Notes, 2013 Series (the “2013 Notes”) to fund, together with other available funds, (i) the 2013 Improvements and (ii) the costs of issuance of the 2013 Notes; and

WHEREAS, the Authority has authorized and expended funds for the 2013 Improvements prior to the issuance of the 2013 Notes, and the Authority intends to reimburse the expenditures on the 2013 Improvements from the proceeds of the 2013 Notes; and

WHEREAS, the *Code* requires the adoption of a statement of official intent under *Treas. Reg. §1.150-2* (the “Reimbursement Regulations”) for the reimbursement of expenditures from the proceeds of a tax exempt obligation; and

WHEREAS, the Authority adopted a resolution on May 9, 2011, (the “Reimbursement Resolution”) that stated the official intent of the Authority as required by the Reimbursement Regulations; and

WHEREAS, the Authority has determined that the negotiated sale of the 2013 Notes to the Delaware Valley Regional Finance Authority (“DelVal”) is in the best financial interest of the Authority; and

WHEREAS, DelVal’s Loan Commitment requires the execution and delivery of a guaranty agreement (the “Guaranty”) by the Township as a condition to the purchase of the 2013 Notes; and

WHEREAS, the Township has determined that the 2013 Improvements will benefit and contribute to the health and general welfare of the Township’s residents; and

WHEREAS, the Township has determined that the execution of the Guaranty will allow the Authority to minimize the costs of issuance and the interest costs of the 2013 Notes and thereby minimize the rates and charges that the Authority must assess for use of the Sewer System; and

WHEREAS, the execution and delivery of the Guaranty, under which the Township shall guarantee the Authority’s obligations to pay principal, interest, and other charges due and payable to DelVal under the terms of the 2013 Notes and the related loan agreement (the “Loan Agreement”), will constitute “lease rental debt” under the Pennsylvania *Local Government Unit Debt Act*, 53 Pa. C.S.A. §8001, et seq (the “*Debt Act*”), as amended and restated; and

WHEREAS, the proposed increase of lease rental debt from the execution of the Guaranty, together with the nonelectoral and lease rental debt presently outstanding, will not cause the constitutional or statutory debt limitations of the Township to be exceeded; and

WHEREAS, the Sewer Revenues to be pledged by the Authority to repay the 2013 Notes are expected to be sufficient to pay the costs of operation and maintenance of the Sewer System and to pay the Authority’s debt obligations; and

WHEREAS, DelVal, a public authority within the meaning of the *Debt Act*, has from time to time issued Local Government Revenue Notes (the “DelVal Bonds”), to provide funds for loans to be secured by the pledge of the full faith, credit and taxing power of local government units (the “Loan Program”); and

WHEREAS, DelVal has from time to time entered into interest rate swap agreements related to the DelVal Bonds (collectively, the “DelVal Swap Agreement”) in order to provide a

more cost effective Loan Program and to allow participants in the Loan Program to manage interest rate risk more efficiently; and

WHEREAS, Calhoun Baker Inc. (the “Financial Advisor”) is an “Independent Financial Advisor”, as such term is defined in the *Debt Act*, to DelVal, and the Financial Advisor has prepared an “Interest Rate Management Plan” (the “Plan”), as such term is defined in the *Debt Act*, and an Interest Rate Swap Management Policy (the “Swap Policy”) that have been adopted by the Board of DelVal; and

WHEREAS, DelVal established minimum criteria of long term, senior, unsecured debt ratings in the “AA” category or higher by at least one Nationally Recognized Statistical Rating Organization registered with the Securities and Exchange Commission for any counterparty to the DelVal Swap Agreement, and the Board of DelVal found that the award of transactions under the DelVal Swap Agreement by negotiation in a private sale was in the best financial interests of DelVal and the participants in the Loan Program, and the Financial Advisor concluded that the financial terms and conditions of the DelVal Swap Agreement were fair and reasonable as of the date of award; and

WHEREAS, the Authority wishes to utilize the DelVal Loan Program by issuing the 2013 Notes to DelVal; and

WHEREAS, under the terms of the Loan Agreement with DelVal, interest payments on the 2013 Notes (the “Loan Interest”) will equal the amounts allocable to the 2013 Notes for interest on the DelVal Bonds, regularly scheduled payments on the DelVal Swap Agreement, and other costs and liquidity requirements incurred by DelVal to administer the Loan Program; and

WHEREAS, under the terms of the Loan Agreement with DelVal, the principal amount outstanding of the 2013 Notes (the “Loan Principal”) will equal the notional amount of the DelVal Swap Agreement related to the 2013 Notes; and; and

WHEREAS, under the terms of the Guaranty, the Township shall guarantee the timely payment of all amounts due under the Loan Agreement and the 2013 Notes, including payments under the DelVal Swap Agreement related to the 2013 Notes; and

WHEREAS, the Township intends to (i) designate the Guaranty and the portion of the DeIVal Swap Agreement related to the 2013 Notes and Loan Agreement as a Qualified Interest Rate Management Agreement under the *Debt Act*, (ii) approve the Plan as the Interest Rate Management Plan required by the *Debt Act*, and (iii) adopt the Swap Policy.

NOW, THEREFORE, BE IT RESOLVED AND ADOPTED BY THE BOARD OF DIRECTORS OF THE EAST GOSHEN MUNICIPAL AUTHORITY THAT:

SECTION 1. APPROVAL OF PROJECT, ESTIMATED USEFUL LIFE OF THE PROJECT, AND APPROVAL OF THE 2013 NOTES

The estimated, weighted average useful life of the 2013 Improvements exceeds the twenty-year term of the 2013 Notes. The principal of the 2013 Notes shall be amortized to provide approximately level or declining annual debt service. The amortization of the principal amounts of the 2013 Notes shall begin within two years of the issuance of the 2013 Notes.

The Board of Directors of the Authority (the "Board") hereby authorizes and approves the 2013 Improvements. The Board hereby approves and directs the issuance of the 2013 Notes, which shall be evidenced by two or more Notes in the aggregate par amount of TWO MILLION FIVE HUNDRED THOUSAND DOLLARS (\$2,500,000).

The Authority shall reimburse only expenditures incurred no more than sixty (60) days prior to the adoption of the Reimbursement Resolution. This limitation shall not apply to the reimbursement of qualified "preliminary expenditures" as defined in the Reimbursement Regulations, provided that the amount of preliminary expenditures shall not exceed 20% of the par amount of the 2013 Notes.

SECTION 2. APPROVAL OF THE LOAN COMMITMENT

The Board, after due deliberation and investigation, hereby determines that a private sale by negotiation of the 2013 Notes is in the best financial interest of the Authority. The 2013 Notes shall be sold at a negotiated sale in accordance with the terms of a proposal (the "Loan Commitment") submitted by DeIVal. The DeIVal Loan Commitment for the 2013 Notes at a price of \$2,500,000 is hereby accepted. The Authority shall be responsible for paying DeIVal's costs of issuance, in an amount not to exceed \$10,000, as directed by DeIVal's Program Administrator upon the issuance of the 2013 Notes. The 2013 Notes shall be purchased by

DelVal on or about October 15, 2013, or in such installments and/or at such other times as the Board's Chairman and DelVal's Program Administrator shall determine.

SECTION 3. APPROVAL OF THE FORMS OF THE LOAN DOCUMENTS AND AUTHORIZATION TO EXECUTE THE AGREEMENTS TO ISSUE THE 2013 NOTES

The Board hereby approves the substantial forms of the 2013 Notes, Loan Agreement, Continuing Disclosure Agreement, Guarantor Continuing Disclosure Agreement, Participant Tax Compliance Agreement, Swap Policy, and Guaranty (collectively, the "Loan Documents") attached to DelVal's Loan Commitment. The Chairman or Vice Chairman and the Secretary (the "Authorized Officers") are hereby authorized and directed to execute and deliver the Loan Documents, each in the respective form attached to the Loan Commitment, but with such alterations, deletions and additions as the Authorized Officers may approve (such approval to be conclusively established by the execution by said Authorized Officers). The Authorized Officers also are hereby authorized and directed (i) to execute and deliver such other certificates, instruments, and agreements and (ii) to take all actions that may be necessary or beneficial to issue the 2013 Notes.

SECTION 4. MAXIMUM INTEREST RATE AND AMORTIZATION SCHEDULE

The indebtedness of the 2013 Notes shall be evidenced by two or more Notes in the aggregate par amount of TWO MILLION FIVE HUNDRED THOUSAND DOLLARS (\$2,500,000). The 2013 Notes shall bear interest at the floating rate and shall be subject to optional redemption as specified in the Loan Agreement and the 2013 Notes, the substantial forms of which are attached to the Loan Commitment. The principal amortization schedule and maximum annual debt service payments for the 2013 Notes (based upon the maximum interest rate of 15%) are set forth below:

**Guaranteed Sewer Revenue Notes, 2013 Series
Principal Amortization Schedule and
Maximum Annual Debt Service**

<i>Bond Year Ending</i>	<i>Principal (1)</i>	<i>Maximum Interest Rate</i>	<i>Maximum Interest Payment (2)</i>	<i>Maximum Annual Debt Service</i>
25-Sep-14	\$ 91,000.00	15%	\$ 354,166.67	\$ 445,166.67
25-Sep-15	94,000.00	15%	361,350.00	455,350.00
25-Sep-16	97,000.00	15%	347,250.00	444,250.00
25-Sep-17	100,000.00	15%	332,700.00	432,700.00
25-Sep-18	103,000.00	15%	317,700.00	420,700.00
25-Sep-19	107,000.00	15%	302,250.00	409,250.00
25-Sep-20	110,000.00	15%	286,200.00	396,200.00
25-Sep-21	114,000.00	15%	269,700.00	383,700.00
25-Sep-22	117,000.00	15%	252,600.00	369,600.00
25-Sep-23	121,000.00	15%	235,050.00	356,050.00
25-Sep-24	125,000.00	15%	216,900.00	341,900.00
25-Sep-25	129,000.00	15%	198,150.00	327,150.00
25-Sep-26	133,000.00	15%	178,800.00	311,800.00
25-Sep-27	137,000.00	15%	158,850.00	295,850.00
25-Sep-28	142,000.00	15%	138,300.00	280,300.00
25-Sep-29	146,000.00	15%	117,000.00	263,000.00
25-Sep-30	151,000.00	15%	95,100.00	246,100.00
25-Sep-31	156,000.00	15%	72,450.00	228,450.00
25-Sep-32	161,000.00	15%	49,050.00	210,050.00
25-Sep-33	166,000.00	15%	24,900.00	190,900.00
Total	<u>\$2,500,000.00</u>		<u>\$4,308,466.67</u>	<u>\$6,808,466.67</u>

- (1) Principal is payable annually, commencing on: 25-Sep-14
Principal is amortized to provide level or declining annual debt service.
- (2) Interest is payable monthly on the 25th, commencing: 25-Oct-13
Interest is calculated for the period beginning on: 15-Oct-13

SECTION 5. PLEDGE OF REVENUES

The Authority hereby covenants to assess rates and charges on the Sewer System which, together with other unrestricted funds available to the Authority, shall be sufficient to provide for the costs to operate and maintain the Sewer System and to pay the Authority's debt service obligations, including the 2013 Notes. The Authority hereby pledges the Sewer Revenues for the repayment of all the obligations due under the Loan Agreement and the 2013 Notes. The Authority hereby covenants not to incur any other obligations with a pledge of Sewer Revenues senior to the pledge for the 2013 Notes as long as any obligations or payments due under the Loan Agreement or the 2013 Notes remain outstanding.

The Authority hereby covenants

- 1) to include all periodic, scheduled payments of Loan Interest and Loan Principal payable under the Loan Agreement and the 2013 Notes in the budget of the fiscal year in which such amounts are due and payable,
- 2) to appropriate such amounts from its general revenues, and
- 3) to pay, or cause to be paid, punctually and duly, such amounts that are due and payable under the Loan Agreement and the 2013 Notes on the dates, at the places, and in the manner stated in the Loan Agreement and the 2013 Notes.

SECTION 6. COVENANTS FOR TERMINATION CHARGES

The Authority hereby covenants:

- 1) to include the amounts due under the Loan Agreement for Termination Charges for the DelVal Swap Agreement related to the 2013 Notes for each fiscal year in which such Termination Charges are payable in its budget for that year,
- 2) to appropriate such amounts from its general revenues for the payment of such Termination Charges, and
- 3) to duly and punctually pay or cause to be paid from its sinking fund or any other of its revenues or funds the Termination Charges at the dates and places and in the manner stated in the 2013 Notes and the Loan Agreement.

The Authority's obligations to make scheduled payments of the DelVal Swap Agreement related to the 2013 Notes are senior to any obligation for a Termination Charge allocable to the 2013 Notes.

SECTION 7. CONFLICTING RESOLUTIONS ARE REPEALED

All Resolutions or parts of Resolutions not in accord with this Resolution are hereby repealed insofar as they conflict herewith.

IN WITNESS WHEREOF, we, the undersigned Authorized Officers, have hereunto set our signatures and affixed hereto the Seal of the EAST GOSHEN MUNICIPAL AUTHORITY, Chester County, Pennsylvania.

Dated: September 9, 2013

FRANCIS X. BECK, JR.
Chairman, Board of Directors

[Seal]

ATTEST:

KEVIN R. CUMMINGS
SECRETARY

**EAST GOSHEN MUNICIPAL AUTHORITY
CHESTER COUNTY, PENNSYLVANIA**

RESOLUTION CERTIFICATION

I, the Undersigned, Secretary of the East Goshen Municipal Authority, hereby certify that I am an official keeper of the Seal and records and that attached hereto is a true, correct and complete copy of the Resolution of the East Goshen Municipal Authority, which Resolution was duly adopted by the Board of Directors at a public meeting held on September 9, 2013, and is entitled:

**RESOLUTION NO. ____
EAST GOSHEN MUNICIPAL AUTHORITY
CHESTER COUNTY, PENNSYLVANIA**

A RESOLUTION AUTHORIZING THE ISSUANCE OF THE \$2,500,000 GUARANTEED SEWER REVENUE NOTES, 2013 SERIES (COLLECTIVELY, THE "2013 NOTES"), BY THE EAST GOSHEN MUNICIPAL AUTHORITY; APPROVING CERTAIN CAPITAL PROJECTS; APPROVING THE ISSUANCE AND NEGOTIATED SALE OF THE 2013 NOTES TO THE DELAWARE VALLEY REGIONAL FINANCE AUTHORITY; APPROVING THE FORMS OF THE LOAN DOCUMENTS AND AUTHORIZING AND DIRECTING THE EXECUTION AND DELIVERY OF ALL DOCUMENTS NECESSARY TO ISSUE THE 2013 NOTES; SETTING THE MAXIMUM INTEREST RATE AND THE PRINCIPAL AMORTIZATION SCHEDULE; AND REPEALING INCONSISTENT RESOLUTIONS.

I hereby certify that proper notice of said meeting was duly given to each member of the Board of Directors; that proper public notice of said meeting was duly given by publication in a paper of general circulation in accordance with the *Municipality Authorities Act*, as amended and restated; that said meeting was open to the public at all times and was not adjourned, begun, recessed or interrupted in any way except for the purpose of an executive session; that a quorum was present at said meeting and acted throughout; that said Resolution was duly enacted by the affirmative vote of a majority of the members of the Board of Directors; that said Resolution,

and the vote of each member thereon, have each been duly recorded in the minutes of said meeting of said Board of Directors; and that said Resolution has not been amended or repealed as of the date hereof.

IN WITNESS WHEREOF, I, the undersigned Authorized Officer, have hereunto set my signature and hereto affixed the Seal of the EAST GOSHEN MUNICIPAL AUTHORITY.

[Seal]

Dated: September 9, 2013

KEVIN R. CUMMINGS
Secretary



*1811 Bethlehem Pike
Flourtown Commons, Suite 350
Flourtown, Pennsylvania 19031
Telephone: 215-402-0270
Telefax: 215-402-0274*

September 9, 2013

The Honorable Francis X. Beck, Jr.
Chairman, Board of Directors
East Goshen Municipal Authority
1580 Paoli Pike
West Chester, Pennsylvania 19380

Dear Mr. Beck:

1. The Delaware Valley Regional Finance Authority ("DelVal") hereby submits a proposal to purchase (the "Loan Commitment") the Guaranteed Sewer Revenue Notes, 2013 Series (the "2013 Notes") in the aggregate principal amount of \$2,500,000 from the East Goshen Municipal Authority, Pennsylvania (the "Authority") subject to the adoption of the resolution (the "Resolution") to authorize the issuance of the 2013 Notes and the acceptance by execution of this Loan Commitment on September 9, 2013.

2. DelVal shall purchase the 2013 Notes at a price of \$2,500,000 with proceeds of the Local Government Revenue Bonds (the "DelVal Bonds"), on or about October 15, 2013, or in such installments or at such other times as the Chairman or Vice Chairman of the Board of Directors and the DelVal's Program Administrator shall determine.

3. This Loan Commitment is contingent upon (i) the approval by the Department of Community and Economic Development of the lease rental debt of the Township of East Goshen (the "Guarantor") to be evidenced by a guaranty agreement (the "Guaranty") securing the repayment of the 2013 Notes and (ii) the execution of the Guaranty (the FORM OF THE GUARANTY AGREEMENT is attached hereto as Exhibit 5) by the Guarantor and the Authority.

4. On the basis of the representations and agreements contained herein, and subject to the terms and conditions herein set forth, DelVal hereby agrees to purchase from the Authority, and the Authority hereby agrees to sell to DelVal, the 2013 Notes, dated on or about October 15, 2013, with principal maturing on the dates and in the amounts set forth in the Resolution and the 2013 Notes (the FORM OF THE 2013 NOTES is attached hereto as Exhibit 1), bearing interest at a variable interest rate (with a maximum interest rate of 15%) adjusted on a monthly basis, and prepayable at the times and in the manner described in the FORM OF THE LOAN AGREEMENT (attached hereto as Exhibit 2), for an aggregate Purchase Price of \$2,500,000.

5. The Authority shall pay DelVal's costs of origination in an amount not to exceed \$10,000. Such costs shall be paid in such amounts and to such persons or entities as the Program

Administrator shall direct the Trustee of the DelVal Bonds (the "DelVal Trustee") in writing on the date of issuance of the 2013 Notes.

6. The 2013 Notes shall be in the form of typewritten Notes in favor of DelVal and its assigns. The 2013 Notes shall be delivered to the DelVal Trustee against payment of the purchase price in immediately available funds at the offices of DelVal, or such other locations or at such other time as DelVal and the Authority may mutually agree.

7. The Authority agrees to deliver the opinion of its counsel and to comply with all of the Program requirements of DelVal and such other conditions necessary to comply with the *Municipality Authorities Act*, *Local Government Unit Debt Act*, the Continuing Disclosure Agreement (the FORM OF THE CONTINUING DISCLOSURE AGREEMENT is attached hereto as Exhibit 3 and the FORM OF THE GUARANTOR CONTINUING DISCLOSURE AGREEMENT is attached hereto as Exhibit 6), the Participant Tax Compliance Agreement (the FORM OF THE PARTICIPANT TAX COMPLIANCE AGREEMENT is attached hereto as Exhibit 4), and all other conditions or requirements that may be imposed by the Program Administrator or such other acts that may be required by DelVal.

8. This Loan Commitment shall be governed by the laws of the Commonwealth of Pennsylvania and shall become effective upon execution hereof by the Authority. This Loan Commitment shall be only for the benefit of the parties hereto.

DELAWARE VALLEY REGIONAL FINANCE AUTHORITY



LUCIEN B. CALHOUN
Calhoun Baker Inc.
Program Administrator

IN WITNESS WHEREOF, we, the undersigned Authorized Officers, have hereunto set our signatures and affixed hereto the Seal of the EAST GOSHEN MUNICIPAL AUTHORITY, Pennsylvania.

Dated: September 9, 2013

FRANCIS X. BECK, JR.
Chairman, Board of Directors

[Seal]

ATTEST:

KEVIN R. CUMMINGS
Secretary

MULLIN ENGINEERING LLC.

Civil Engineering – Land Development

412 Monterey Lane West Chester PA 19380 (610) 420-5309



August 14, 2013

East Goshen Municipal Authority
1580 Paoli Pike
West Chester Pa 19380

Attention: Francis X. Beck, Jr., Chairman

My client, Sunny Ridge Farms LLC has proposed a four lot residential subdivision on the northwest corner of the intersection of Colonial Lane and Cornwallis Drive. (Tax Parcel No. 53-4-41). We propose to extend the sewer line 260 feet down the Colonial Lane in order to connect two of the four proposed lots to the new sewer line and the other two will connect to the existing line. We are requesting to tie a total of four EDU's into your system and would like to know if you have the capacity.

If you have any questions regarding the proposed project, please don't hesitate to contact the undersigned.

Sincerely yours,

John J. Mullin P.E.

cc. Mark A. Gordon, Zoning Officer
Rick Bunn

EAST GOSHEN MUNICIPAL AUTHORITY
EAST GOSHEN TOWNSHIP
1580 PAOLI PIKE, WEST CHESTER, PA 19380-6199

September 6, 2013

To: Municipal Authority
From: Mark Miller
Re: August 2013 Monthly Report

Meters: Meters were read on a daily basis. No problems to report.

Pump Stations: Were visited on a daily basis, MGK was utilized to remove the piping on the Force Main and installed new 90 and an air release valve.

C.C. Collection: We installed a Muffin Monster at the Hershey Mill Pump Station.

R.C. Collection: No problems to report.

R.C. Plant: No problems to report.

Alarms: We received a total of 25 alarms in August.

PA One Calls: We received 70 PA One calls for the month of August.



MEMORANDUM

TO: East Goshen Municipal Authority Board
Rick Smith, Township Manager

FROM: Michael Ellis, P.E.
Authority Engineer

DATE: September 4, 2013

SUBJECT: Engineer's Report

Invoices

- Invoices with summaries are provided under separate cover.

Ridley Creek Sewage Treatment Plant (RCSTP)

- Pennoni continues to provide operations assistance as needed. No issues were brought to our attention in August.

Marydell PS Elimination

- The project has been completed, and final payment has been made.

Hershey's Mill PS Diversion

- The project is 100% complete. We have been coordinating with the contractor to revise final payroll certifications. Revised certifications have been submitted which we will review by September 9.

Reserve PS Elimination

- We issued Notice to Proceed with Construction effective August 14. The contract duration is 90 days so the contract completion date is November 11. The contractor intends to begin construction on September 9, and we project 4-6 weeks to complete the project.
- We performed pre-construction tasks including attending a pre-construction meeting on-site, reviewing a partial submission of shop drawings, notifying Chester County Conservation District of the work, preparing a CAD file and survey data for the contractor's construction layout, and issuing a project contact list. Additional shop drawings have been submitted and are currently under review. We will perform construction observation once the work begins.

Reservoir Road Pump Station

- PADEP approved the Act 537 “Plan of Study and Task-Activity Report” and added the project to their list for Act 537 reimbursement grant funding.

Debt Issuance Certification

- We reviewed the self-liquidating debt certification requirements from the lender that is required to be provided by the Engineer for the proposed \$2.5M borrowing including reviewing and commenting on the Authority’s 20-year budget projections. We expect to issue the certification by September 9.

Hershey’s Mill PS Muffin Monster

- We coordinated with the supplier to perform an upcoming start-up inspection of the Muffin Monster upon completion of the installation by the Township.

Semi-Annual I/I Report

- We received data from portable meters throughout the Chester Creek Collection System, and we began analysis of the flows. We also began preparation of the semi-annual report. The report will be completed and submitted before the October Municipal Authority meeting.



Monthly Operations Report: August 2013

Treatment Process Operation

During July 2013, there were no exceedances of the final effluent discharge limitations for outfall 001 and Outfall 002. Table 1 illustrates the final effluent composite sample data reported for the July 2013 eDMR.

Table 1

July 2013 - Final Effluent - Out Fall 001											
NPDES Permit Discharge Limitations	Flow	CBOD ₅		TSS		NH ₄ -N		Phosphorus, Total , mg/L		Fecal Coliform	
	MGD Average	mg/L	lbs/ month	mg/L	lbs/ month	mg/L	lbs/ month	mg/L	lbs/ month	Geo Mean	Geo Mean
	0.75	20	125	21	131	7	44	0.5	3	200	1,000
	Instantaneous Maximum	40		42							
Sample Date											
July 3, 2013	0.183	2.0	3.1	5	8	0.254	0.39	0.27	0.41	1	0.0000
July 11, 2013	0.142	2.0	2.4	13	15	0.10	0.12	0.56	0.66	1	0.0000
July 18, 2013	0.126	2.0	2.1	12	13	0.10	0.11	0.64	0.67	1	0.0000
July 25, 2013	0.127	2.0	2.1	7	7	0.10	0.11	0.30	0.32	1	0.0000
July 31, 2013	0.129							0.24	0.26		
Average	0.1414	2.0	2	9	11	0.139	0.18	0.40	0.46	1	0.0000
Minimum	0.1260	2.0	2	5	7	0.100	0.11	0.24	0.26	1	0.0000
Maximum	0.1830	2.0	3	13	15	0.254	0.39	0.64	0.67	1	0.0000

The monthly average total phosphorus concentration was 0.46 mg/L as compared to the discharge limitation of 0.5 mg/L. During the month, the final effluent total phosphorus concentration discharged ranged from 0.26 mg/L to 0.67 mg/L.

Flow to Applebrook, Outfall 002, continued during July and August. Table 2 illustrates the data reported for the July 2013 eDMR.



Table 2

July 2013 - Applebrook - Out Fall 002											
NPDES Permit Discharge Limitations	Flow	CBOD ₅		TSS		NH ₄ -N		Phosphorus, Total , mg/L		Fecal Coliform	
	MGD Average	mg/L	lbs/ month	mg/L	lbs/ month	mg/L	lbs/ month	mg/L	lbs/ month	Geo Mean	Geo Mean
	0.75	20	125	21	131	7	44	0.5	3	200	1,000
	Instantaneous Maximum	40		42							
Sample Date											
July 3, 2013	0.1426	2.0	2.4	5	6	0.254	0.30	0.27	0.32	1	0.0000
July 11, 2013	0.1493	2.0	2.5	13	16	0.100	0.12	0.56	0.70	1	0.0000
July 18, 2013	0.1491	2.0	2.5	12	15	0.100	0.12	0.64	0.80	1	0.0000
July 25, 2013	0.1483	2.0	2.5	7	9	0.100	0.12	0.30	0.37	1	0.0000
July 31, 2013	0.1521							0.24			
Average	0.1483	2.0	2	9	11	0.139	0.17	0.40	0.55	1	0.0000
Minimum	0.1426	2.0	2	5	6	0.100	0.12	0.24	0.32	1	0.0000
Maximum	0.1521	2.0	2	13	16	0.254	0.30	0.64	0.80	1	0.0000

Table 3 illustrates the influent wastewater pollutant loadings for July 2013. The influent loadings remained within the treatment facility design loadings.

Table 3

July 2013 - Influent Wastewater											
Design Basis	Flow	BOD ₅		TSS		NH ₄ -N		TKN, mg/L		Phosphorus, Total, mg/L	
		mg/L	lbs/day	mg/L	lbs/day	mg/L	lbs/day	mg/L	lbs/day	mg/L	lbs/day
	MGD Average	335	2,098	320	2,001	32	200	48	301	9.1	57
Sample Date											
July 3, 2013	0.3556	206	611	345	1,023	30.9	92	35.6	106	4.7	14
July 11, 2013	0.3834	125	371	505	1,498	40.0	119	57.3	170	7.7	23
July 18, 2013	0.3685	242	718	295	875	40.7	121	58.3	173	7.8	23
July 25, 2013	0.3409	167	495	284	842	33.6	100	38.8	115	6.5	19
Average	0.3621	185	549	357	1059	36.3	108	47.5	141	6.7	20
Minimum	0.3409	125	371	284	842	30.9	92	35.6	106	4.7	14
Maximum	0.3834	242	718	505	1498	40.7	121	58.3	173	7.8	23



During the month of August 2013, there are no anticipated exceedances of the permit limitations for Outfall 001 and Outfall 002. The CBOD5 and TSS final effluent concentrations were elevated as the result of a significant storm resulting in the instantaneous flows exceeding three times the average daily hydraulic design loading. The final effluent clarity remained very good during the storm event with no solids loss or carryover due to filled settle or filled decant events. Table 4 presents the available final effluent data for the month of August.

Table 4

August 2013 - Final Effluent - Out Fall 001											
NPDES Permit Discharge Limitations	Flow	CBOD ₅		TSS		NH ₄ -N		Phosphorus, Total , mg/L		Fecal Coliform	
	MGD Average	mg/L	lbs/ month	mg/L	lbs/ month	mg/L	lbs/ month	mg/L	lbs/ month	Geo Mean	Geo Mean
	0.75	20	125	21	131	7	44	0.5	3	200	1,000
	Instantaneous Maximum	40		42							
Sample Date											
August 1, 2013	0.251	2.0	4.2	5	10	0.100	0.21	0.28	0.59	1	0.0000
August 8, 2013	0.131	2.0	2.2	5	5	0.10	0.11	0.19	0.21	1	0.0000
August 15, 2013	0.146	13.3	16.2	11	13			0.24	0.29	1	0.0000
August 22, 2013	0.157									1	0.0000
August 29, 2013	0.243										
Average	0.1856	5.8	8	7	10	0.100	0.16	0.24	0.36	1	0.0000
Minimum	0.1310	2.0	2	5	5	0.100	0.11	0.19	0.21	1	0.0000
Maximum	0.2510	13.3	16	11	13	0.100	0.21	0.28	0.59	1	0.0000

Transfer of treated effluent to the Applebrook Golf Course continued during August through the 26th. The pump was removed from service due to troubleshooting. The pump is planned to be returned to service during September. During August, the average daily average for Outfall 002 was 147,015 gallons per day. Table 5 presents available data for the Applebrook discharge.



Table 5

August 2013 - Applebrook - Out Fall 002											
NPDES Permit Discharge Limitations	Flow	CBOD ₅		TSS		NH ₄ -N		Phosphorus, Total , mg/L		Fecal Coliform	
	MGD Average	mg/L	lbs/ month	mg/L	lbs/ month	mg/L	lbs/ month	mg/L	lbs/ month	Geo Mean	Geo Mean
	0.75	20	125	21	131	7	44	0.5	3	200	1,000
Instantaneous Maximum	40		42								
Sample Date											
August 1, 2013	0.1470	2.0	2.5	5	6	0.100	0.12	0.28	0.34	1	0.0000
August 8, 2013	0.1490	2.0	2.5	5	6	0.100	0.12	0.19	0.24	1	0.0000
August 15, 2013	0.1470	13.3	16.3	11	13	0.000	0.00	0.24	0.29	1	0.0000
August 22, 2013	0.1440									1	0.0000
August 29, 2013	0.0000										
Average	0.1174	5.8	7	7	9	0.067	0.08	0.24	0.29	1	0.0000
Minimum	0.0000	2.0	2	5	6	0.000	0.00	0.19	0.24	1	0.0000
Maximum	0.1490	13.3	16	11	13	0.100	0.12	0.28	0.34	1	0.0000

Table 6 presents the influent wastewater pollutant concentrations and loading entering the wastewater treatment facility. Composite samples are collected at the influent doghouse manhole. The influent flow meter reading is collected from the influent flow meter located prior to the Screening Building, excluding the internal recycle flows.

Table 6

August 2013 - Influent Wastewater											
Design Basis	Flow	BOD ₅		TSS		NH ₄ -N		TKN, mg/L		Phosphorus, Total, mg/L	
		mg/L	lbs/day	mg/L	lbs/day	mg/L	lbs/day	mg/L	lbs/day	mg/L	lbs/day
	MGD Average	335	2,098	320	2,001	32	200	48	301	9.1	57
Sample Date											
August 1, 2013	0.590	177	870	304	1,495	23.3	115	32.7	161	4.2	21
August 8, 2013	0.347	268	1,318	205	1,008	33.3	164	46.7	230	5.1	25
August 15, 2013	0.323	163	802	228	1,121	33.7	166	44.5	219	5.9	29
August 22, 2013	0.310	254	1,249	270	1,328			51.6	254		
August 29, 2013	0.334										
Average	0.3807	216	1060	252	1238	30.1	148	43.9	216	5.1	25
Minimum	0.3100	163	802	205	1008	23.3	115	32.7	161	4.2	21
Maximum	0.5896	268	1318	304	1495	33.7	166	51.6	254	5.9	29



Sequencing batch reactors (SBRs) numbered 1, 3 and 4 were in service during the month of August. SBR number 2 was placed in service on August 13th as a storage tank for diverting excess influent flows to the in service SBRs to prevent and reduce the frequency of filled settle and filled decants events.

Process monitoring of each SBR included ammonia as N, nitrite as N, Nitrate as N, COD, SSV, MLSS and total phosphorus. Foam concentrations remained around the same concentration as during March. Present surface area coverage during React Phase ranges from approximately 50 to 80%. The foam remains as light to medium brown in color and averages 2 to 4 inches in depth

Daily monitoring of the influent and final effluent 24-hour composites samples for total phosphorus is ongoing. Daily analysis of the final effluent flow equalization grab sample is total phosphorus is ongoing.

Addition of aluminum sulfate solution to the SBRs to assist with phosphorus removal continued. The volume of aluminum sulfate solution to the SBRs was increased at beginning of August as total phosphorus concentrations in the SBRs at the end of the React Phase were observed to increase.

SBR No. 2 remains out of service as a treatment unit. The tank was partially filled during the storm event. Transfer of the contents and cleaning of the SBR is planned for late September/early October to reduce energy costs.

Process Monitoring On-Line Instrumentation:

Coordination with the Hach Company has been placed on hold until a demonstration unit becomes available

Flow data:

August 2013		
Flow Meter Location	Total Volume for Month, MGD	Average Daily Flow, gpd
Influent Wastewater to Screening Building	10.806	348,589
Influent Wastewater to SBRs	12.938	417,366
Internal Recycle	2.167	69,895
Treated Effluent to Disc Filters	11.947	385,375
Final Effluent Discharge	4.689	151,258
Applebrook Golf Course	4.557	147,015



Chemical Usage:

August 2013		
Chemical	Daily Average	Total Monthly
Soda Ash	376 lbs./day	11,650 pounds
Magnesium Hydroxide	0 gpd	0 gallons
Aluminum Sulfate solution	74 gpd	2,306 gallons
Polymer (centrifuge)	7.5*	106 gallons

**Fifteen (15) days of centrifuge operation*

Solids Dewatering and Disposal: August 2013

Sludge Dewatering Summary	
Gallons of sludge dewatered	334,021 gallons
Average Dewatered Total Solids, %	Na*
Wet Tons	Na*
Dry Tons	Na*
Number of dumpsters	4

**The total solids data, wet tons and dry tons data was not available at the time of preparing the report.*

During the month, sludge wasting to the sludge holding tanks and decanting of the sludge holding tanks was ongoing. Process monitoring included pH, total alkalinity and total solids.

Sludge holding tank No. 1 was in service. The level at the beginning of the month was 14.47 feet and the level at the end of the month was 10.25 feet. The initial total solids concentration was 0.64% and ended the month as 1.02% total solids. 185,150 gallons of supernatant was decanted during the month. A total of 400 pounds of soda ash was added during the month for pH adjustment.

Sludge holding tank No. 2 was in service. The level at the beginning of the month was 9.37 feet and the level at the end of the month was 11.44 feet. The initial total solids concentration was 0.79% and ended the month as 0.62% total solids. No supernatant was decanted during the month. A total of 1,100 pounds of soda ash was added during the month for pH adjustment.

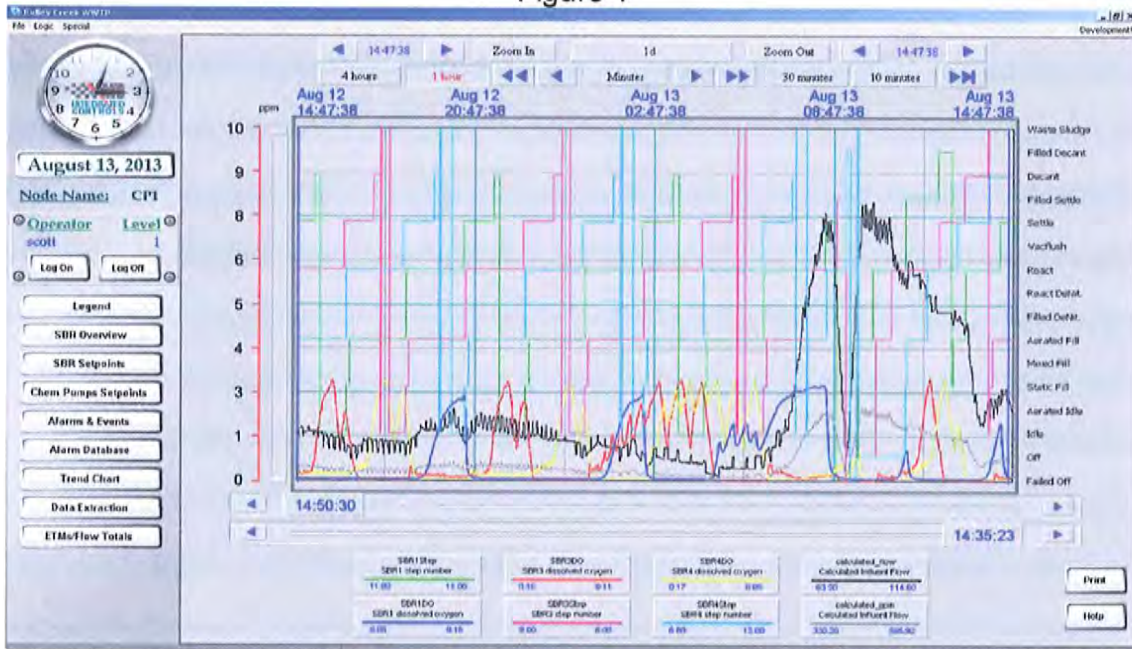
Significant Storm Events

As previously described, on August 13th a significant storm resulting in several inches of rainfall within a period of approximately 6 hours contributed to significant flow rates and volumes to the SBR treatment process. Figure 1 illustrates the



increase of the flow rate by approximately four times the current average flow rate. The treatment process was placed in manual operation to manage the influent flow to prevent solids loss or carryover from filled settle and filled decant events. As illustrated in Figure 1, the flow rate and volume to the SBR was under control at approximately 2:35 PM.

Figure 1



Listed below is a detailed description of the facility operation procedures implemented to manage the high flow rates and volume to prevent solids loss

- 0845 Process changes
 - Min air 230 to 100
 - Min react 90 to 60
 - UV 0.75mgd to 0.20 mgd
- 0845 Manually opened SBR # 2 influent valve level 9.28, and closed SBR # 3 influent valve due to filled settle
- 0900 Grabbed effluent grab sample shut off composite
- 0915 Manually decanting SBR # 1
- 0930 Closed SBR # 1 effluent valve (decanted to 18.00)
Closed SBR # 2 influent valve (level 18.81)
- 0940 Turned SBR # 4 off as it went into filled settle and started to waste
- 0945 Started SBR # 3 manually decanting approx 5 min early.



- 1000 Changed filter feed pumps to 700gpm increased mid set point to 12.5 from 11.0
- 1010 Closed SBR # 3 effluent valve decanted to 18.42 SBR # 2 at 19.65
SBR # 3 into static fill, SBR # 1 react 6 min, SBR # 4 off (settling for decant hopefully I can get to approx 1040)
- 1030 Opened SBR # 4 effluent valve to manually decant level 21.65 SBR # 3 levels at 21.75 aerated fill
- 1040 Turned Blower # 5 off and motive pump # 2 off to SBR # 2
Increased filter feed pumps to 800gpm increased mid level set point to 13
- 1113 Closed SBR # 4 effluent valve turned SBR # 4 back to auto.
Shut SBR # 2 off as it went into filled Settle.
Increased filter feed pumps to 900gpm
Reduced settles from 60 to 50 min
Still flow 1700 gallons influent at this time
- 1120 Opened SBR # 2 effluent valve to manually decant from 23.13ft to 18
- 1145 Increased filter feed pump to 1000gpm.
Turned SBR # 2 waste pump on tank still decanting level 20.01 SBR # 4 in aerated fill level 22.61
Lowered min air to 80 from 90
- 1155 Closed SBR # 2 effluent valve, shut off waste level 19.41 SBR # 4 into react 0 min SBR # 1 settle
42 min SBR # 3 react 72 min (about to go into settles, I think)
- 1200 Put SBR # 2 motive pump in auto and blower # 5 (for SBR # 2) in auto
- 1210 Blower # 5 does not work in Auto, the computer does call for it but it does not come on running it in hand 50% speed.
- 1235 We are running out of room...SBR # 1 Filled decant level 19.42 (Influent flow going to SBR # 2 level 23.24, going to set it to go to SBR # 1 when it hits 23.50ft) SBR # 3 Settle 17 min SBR # 4 react 42 min
- 1240 Turned on SBR # 2 waste pump
- 1300 Turned filter feed pump # 1 in hand 35% pump # 3 auto set to 1400gpm as post eq level at 12.95
- 1310 Shut SBR # 2 effluent valve as SBR # 3 went into decant (did not want the SBR's to equalize)
- 1315 Manually filling SBR # 1 to 23.00 feet even though it went into react at 22.0
- 1325 Closed influent valve to SBR # 1 level at 23.14 SBR # 2 receiving influent level 20.18
SBR # 3 still decanting level 20.17 SBR #4 settles 30 min
- 1340 Increased filter feed to 1600gpm, level 12.98 ft
TOOK INTERMEDIATE FLOW AGAIN 231,245 GALLONS SINCE 0910
- 1345 Increased settles from 50 to 65 as SBR # 4 about to start decanting and SBR # 3 is still decanting



- 1400 Increased SBR # 3 bottom water level to 19 ft to stop decanting decreased waste to 2 min SBR # 4
Started to decant so I set SBR # 3 settings back to bottom water level 18.0 ft and waste at 17 SBR # 3 Level 18.99
- 1425 Turned off SBR # 2 waste pump as SBR # 1 settles 4 min level 23.12, SBR # 3 aerated fill 19 min level 20.38 SBR # 4 decanting 27 min level 19.55
- 1435 Set settles back to 60
Minimum react back to 90
Minimum air back to 230

Minor Repairs and Preventative Maintenance

No repairs or preventative maintenance activities were performed during August 2013.

2013 FLOWMETERS

2013 AUGUST 3RD QUARTER- METERS FROM WEST GOSHEN - CC COLLECTION

Precip	DATE	WESTTOWN WAY	ELLIS LANE	PAOLI PIKE	WILSON DRIVE	SUMMIT	NET
Inches	READING	GPD	READING	GPD	READING	GPD	FLOWS
2.25	08/01/13						
0.00	08/02/13	1,371,857	1,835,797	1,188,540	17,113,244	227,410	1,943,950
0.10	08/03/13						
0.00	08/04/13						
0.00	08/05/13	1,374,779	1,867,936	107,230	1,207,380	94,200	17,133,509
0.03	08/06/13	1,375,745	1,878,010	100,740	1,213,026	56,460	17,140,870
0.45	08/07/13	1,376,707	1,887,532	95,220	1,218,665	56,390	17,149,082
0.00	08/08/13	1,377,698	1,897,476	99,440	1,224,403	57,380	17,157,777
0.00	08/09/13	1,378,683	1,907,432	99,560	1,230,269	58,660	17,167,840
0.00	08/10/13						100,630
0.00	08/11/13						0
0.05	08/12/13	1,381,462	1,936,894	98,207	1,247,316	56,823	17,188,760
3.05	08/13/13	1,382,466	1,947,394	105,000	1,253,346	60,300	17,197,847
0.00	08/14/13	1,384,249	1,965,466	180,720	1,263,282	99,360	17,208,111
0.00	08/15/13	1,385,301	1,977,040	115,740	1,270,065	67,830	17,215,906
0.00	08/16/13						77,950
0.00	08/17/13						24,000
0.00	08/18/13						0
0.00	08/19/13						0
0.00	08/20/13						0
0.00	08/21/13	1,390,989	1,998,439	102,332	1,305,457	58,987	17,248,539
0.00	08/22/13	1,391,907	2,047,939	96,000	1,311,456	59,990	17,254,945
0.00	08/23/13	1,392,862	2,059,461	115,220	1,317,696	62,400	17,262,884
0.00	08/24/13						79,390
0.00	08/25/13						24,000
0.00	08/26/13	1,395,540	2,084,092	82,103	1,337,215	65,063	17,280,553
0.00	08/27/13	1,396,457	2,093,215	91,230	1,343,516	63,010	17,288,046
0.90	08/28/13	1,397,372	2,101,994	87,790	1,349,372	58,560	17,296,075
0.75	08/29/13	1,398,470	2,115,284	132,900	1,357,315	79,430	17,305,470
0.00	08/30/13	1,399,797	2,127,253	119,690	1,364,202	68,870	17,314,322
0.00	08/31/13						88,520
7.58		1,124,593	117,115	71,356		87,438	848,684
			EG TWP				
	MONTH TO DATE			7.58			
	NORMAL MONTH TO DATE						
	YEAR TO DATE			34.65			
	NORMAL YEAR TO DATE						

2013 FLOWMETERS

2013 AUGUST 3RD QUARTER- METERS FROM WEST GOSHEN - CC COLLECTION

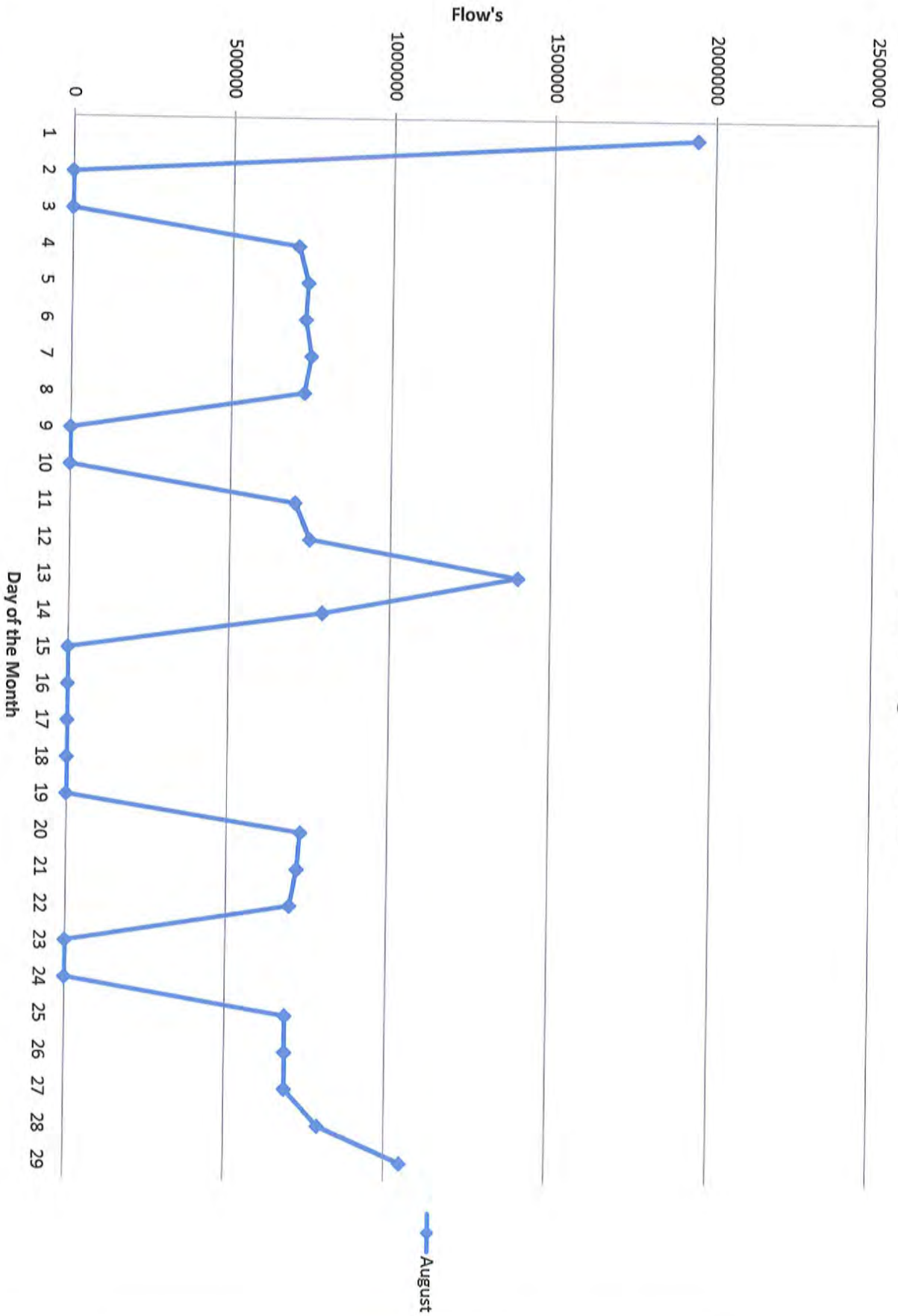
DATE	HERSHEY'S MILL		ASHBRIDGE		HICKS METER		RESERVOIR		SHERMAN		BARKWAY	
	READING	GPD	READING	GPD	READING	GPD	READING	GPD	READING	GPD	READING	GPD
08/01/13												
08/02/13	26,891.971	71,030	1,712.793	55,750	4,517.328	641,520	26,668.062	1,727,200	1,093,498	5,115	2,871,688	5,197
08/03/13												
08/04/13												
08/05/13												
08/06/13	26,928.797	92,065	1,716.343	88,750	4,593.937	222,030	26,873.973	686,370				
08/07/13					4,609.287	253,500	26,946.913	729,400	1,096,222	6,810	2,876,500	12,030
08/08/13	26,942.813	70,080	1,717.479	56,800	4,635.178	258,910	27,018.440	715,270				
08/09/13					4,662.430	272,520	27,092.391	739,510	1,097,300	5,390	2,878,257	8,785
08/10/13					4,689.829	273,990	27,166.367	739,760				
08/11/13												
08/12/13					4,755.651	219,407	27,363.332	656,550				
08/13/13	27,001.100	116,574	1,722.080	92,020	4,784.844	291,930	27,439.201	758,690	1,101,435	8,270	2,885,369	14,224
08/14/13					4,826.869	420,250	27,544.291	1,050,900				
08/15/13					4,894.515	276,460	27,619.871	755,800				
08/16/13												
08/17/13												
08/18/13												
08/19/13												
08/20/13												
08/21/13					4,991.374	228,098	28,026.571	677,833				
08/22/13							28,095.428	688,570				
08/23/13					5,043.779	262,025	28,166.671	712,430				
08/24/13												
08/25/13												
08/26/13					5,109.769	219,967	28,358.055	637,947				
08/27/13	27,095.839	67,671	1,728.340	44,714	5,134.764	249,950	28,425.115	670,600	1,108,582	5,105	2,897,054	8,346
08/28/13					5,159.846	250,820	28,491.367	662,520				
08/29/13	27,110.722	74,415	1,729.264	46,200	5,189.837	299,910	28,573.005	816,380	1,109,883	6,505	2,898,978	9,620
08/30/13					5,217.726	278,890	28,648.952	759,470				
		81,972		64,039		273,343		788,067		6,199		9,700

2013 SUMMARY OF METER READINGS

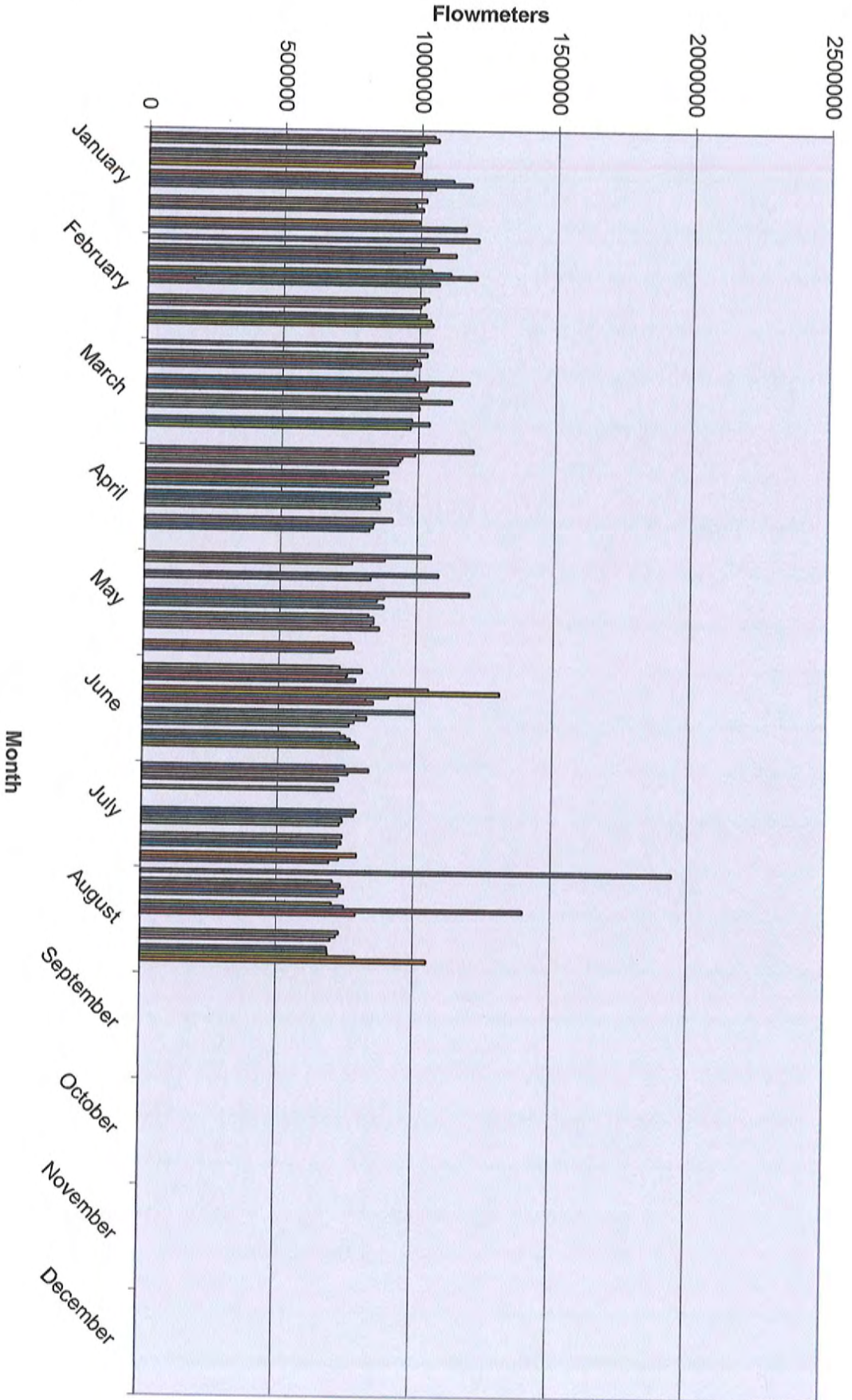
	WESTTOWN WAY	ELLIS LANE	PAOLI PIKE	WILSON DRIVE	SUMMIT	HERSHEY MILL	ASHBRIDGE	HICKS	RESERVOIR	SHERMAN	BARKWAY
JANUARY	1,277,069	120,481	60,165	63,671	20,400	89,992	70,106	387,898	922,377	7,363	11,147
FEBRUARY	1,297,700	101,955	56,216	77,811	20,400	89,500	64,950	387,898	936,368	7,669	10,544
MARCH	1,285,156	105,488	68,636	85,607	20,400	79,416	66,580	292,895	594,040	3,899	7,122
APRIL	1,127,728	92,814	69,146	68,496	20,400	73,245	59,483	365,108	1,030,755	5,310	9,527
MAY	1,109,530	95,306	70,372	69,500	20,400	81,412	65,970	335,818	864,850	6,661	11,011
JUNE	939,067	145,961	76,451	82,547	20,400	95,383	68,653	307,972	773,741	5,759	11,576
JULY	1,167,686	118,589	72,476	103,441	20,400	85,258	64,865	288,723	698,462	5,572	10,464
AUGUST	1,124,593	117,115	71,356	87,438	20,400	81,972	64,039	273,343	788,067	6,199	9,700
SEPTEMBER											
OCTOBER											
NOVEMBER											
DECEMBER											
Total Flows											
Monthly Ave	1,166,066	112,214	68,102	79,814	20,400	84,522	65,581	281,470	826,083	6,054	10,136

To
West Goshen 905,936

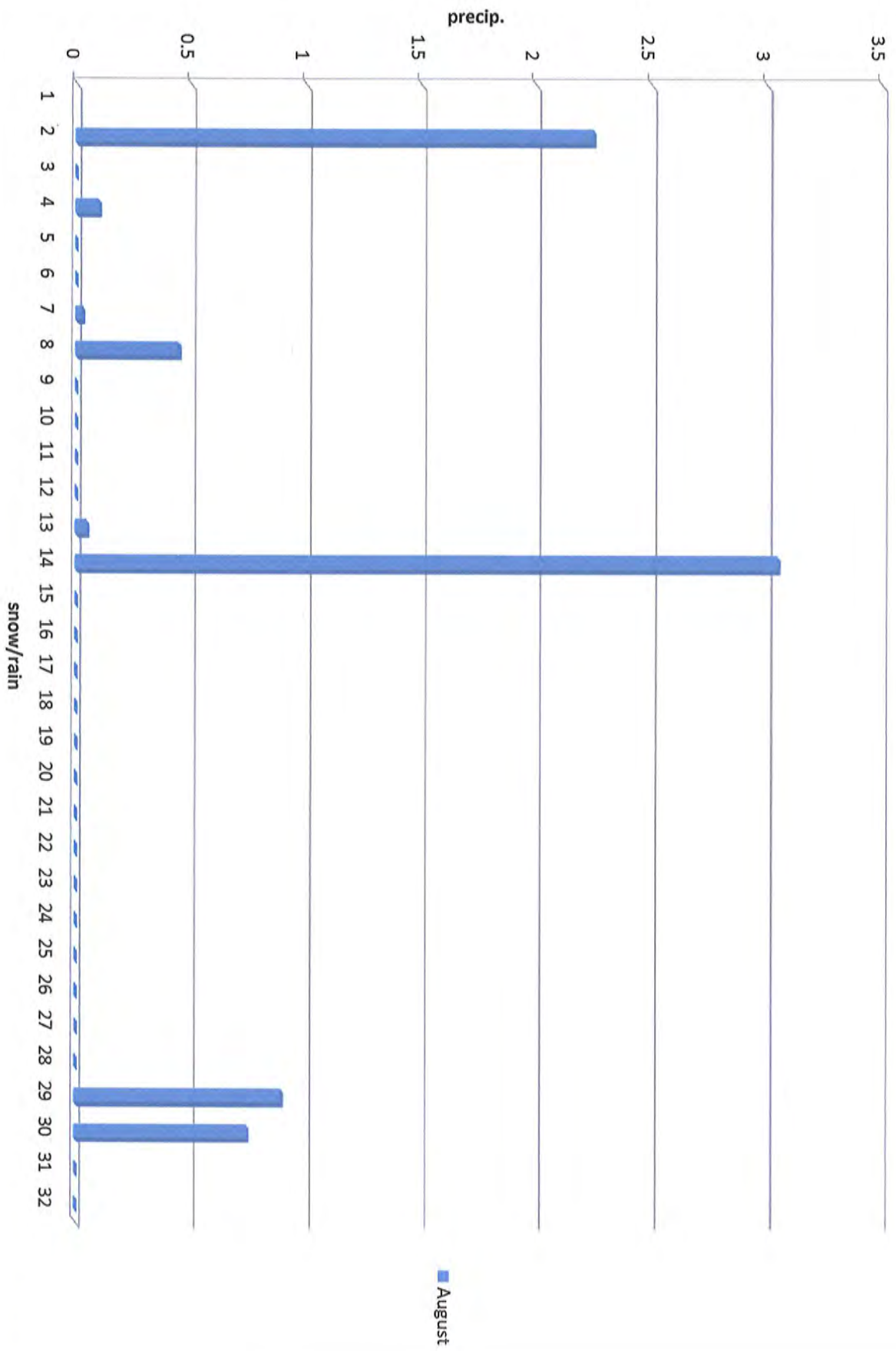
Flowmeters August 2013



Monthly Totals 2012 Jan-Dec



August Precip 7.58 - 2013



2013 Monthly Precipitation

