

EAST GOSHEN

CHESTER COUNTY, PA

Township



LOOK INSIDE!

WINTER RECREATION PROGRAMS

PAGES 6-8

INSIDE THIS ISSUE:

Township Directory.....	2
Commerce Commission's Spotlight on Business.....	3
Latest News from the Park & Recreation Commission	5
Save the Date!	5
East Goshen Recreation	6-8
The Clocks of Winter.....	9
Poet Laureate.....	9
Winter Weather Snow Removal	10
Ready Chesco.org	10
Cold Weather Pruning Tips.....	11
Trash/Recycling.....	12
2016 Bulk and Yard Waste.....	12
Malvern Public Library	13
Odds & Ends from Rick Smith, Township Manager	13
Smoke Testing of Sanitary Sewers.....	14
Latest News from Westtown-East Goshen Police Department.....	15
Clean Water Tips.....	15
Things to Know	15
Some Facts about White-Tailed Deer	16
Dates of Importance	17

WINTER 2016 NEWSLETTER



FROM THE CHAIRMAN...

Today is November 1st. Most likely the holidays will be over by the time you receive this newsletter. On behalf of our employees and the Board of Supervisors, I hope your holidays were pleasant ones, and best wishes for a terrific 2016.

This will be my last newsletter for a while. The Board will elect a new chairman next year, who will take over this responsibility. I hope you found the articles over the last two years to be informative.

I goofed. I stated in the last newsletter that both the **Hershey's Mill and Milltown Dams** are required to handle a 100 year storm. That was incorrect. The Milltown Dam is required to handle 17 inches of rain in a 24 hour period, which is considerably more than a hundred year storm of 7.5 inches of rain. The reason for this is that the potential loss of life is greater if the Milltown Dam were to fail.

Sunoco's Land Agents continue to contact residents along Boot Road and North Chester Road to secure easements for the proposed Mariner 2 pipeline. About 30% of the properties have signed easements. Sunoco's goal is to have all easements signed by the end of the year so that construction may start in East Goshen in the spring. The project is expected to take about 2 to 3 months to complete. Sunoco's goal is to obtain a 50 foot right-of-way along the entire pipeline. In some cases, they want an additional 25 feet for a temporary easement for construction.

The first phase of Mariner 2 will be to install a 16' pipe utilizing horizontal drilling along Boot Road and North Chester Road. No road closures are anticipated during construction. Sunoco is also considering a second phase for the Mariner 2 project. An additional 20" pipe may also be installed at the same time as the 16" pipe is being installed. That decision should be made by the end of the year.

Dunkin Donuts has received all the necessary approvals from East Goshen and has begun renovations. The grand opening should be in the spring of next year. I know that many residents can't wait for this to happen.

The Township held its second **E-Waste Recycling Event on November 21st**. The Township plans to continue to hold two of these events next year.

The Township's new **Comprehensive Plan and Parks, Recreation and Open Space Plan** were adopted by the Supervisors in October. Many thanks to Supervisor Janet Emanuel, who chaired both task forces, as well as all the members of our Authorities, Boards

continued on page 2

East Goshen Township...a great place to work, live and play

Visit us on the web at www.eastgoshen.org

AJB Trash & Recycling Service
A.J. Blosenski Inc.
www.ajblosenski.com
610.942.2707

Discount Code: E. Goshen
\$25.00 off
 a Roll-off Dumpster
\$10.00 off
 Junk Removal Service

Four Generations of Quality Service from the Blosenski Family

- 96 Gallon Carts Available
- Bulk Item Removal
- Special Cleanups
- Roll-off Dumpsters
- Storage Containers
- Commercial Compactors
- 1-40 Yard Containers
- Event & Party Boxes
- 100% Customer Satisfaction






15 cubic yards
 14'0" long / 8'6" wide / 3'6" high

20 cubic yards
 22'0" long / 8'6" wide / 6'0" high

Dependable Roll-Off Service

Servicing East Goshen Township

Discount cannot be combined with any other offer.



How you live begins with where you live.

New Kent Apartments
610.436.6495
newkentapts.com



hankinapartments
hankinapartments.com

300 New Kent Drive
 West Chester, PA 19380
 Office Hours
 Mon-Sat 10-5 | Sun 12-4



**Pizza • Stromboli • Hoagies
 Cheesesteaks**

Mon. 10:30 am-9 pm • Tues.-Thurs. 10:30 am-10 pm
 Fri. 10:30 am-10:30 pm • Sat. 8 am - 10:30 pm
 Sun. 8 am-9 pm

610-692-0100
 Fax 610-692-0123

**Route 352 & Paoli Pike
 East Goshen**

Eat-In • Take-Out • Delivery

Specializing in Service and Repair



LARRY ENT FOR PLUMBING

Office
(610) 692-6844

LARRY ENT
 1113 North New Street
 West Chester, PA 19380



"First in Customer Satisfaction"

1419 E. Boot Road
 West Chester PA 19380-5902

610-344-7234

Thank you to all our customers who voted for us!



www.ccfueloil.com
 PA CONTRACTOR #PA005783
 BUREAU OF CONSUMER PROTECTION 888-520-6680

**FUEL OIL DELIVERIES
 PRICE PROTECTION PLANS
 BUDGET PLANS
 OIL BURNERS
 HEAT PUMPS
 AIR CONDITIONING
 SERVICE CONTRACTS
 INSTALLATIONS
 CHIMNEY LINERS
 HUMIDIFIERS
 ELECTRONIC AIR CLEANERS
 FREE ESTIMATES
 SENIOR CITIZEN DISCOUNTS
 24-HOUR EMERGENCY SERVICE**

VistaLuxe® Collection **KOLBE**
 WINDOWS & DOORS



Contact the experts at North American Window & Door for a personal design consultation and viewing of Kolbe's VistaLuxe Collection products.

North American Window & Door Co., Inc.
www.NorthAmericanWindow.com

186 Old York Rd in New Hope
 888.292.5872

1304 Goshen Pkwy, Ste 200 in West Chester
 800.887.7220

TOWNSHIP DIRECTORY

EAST GOSHEN TOWNSHIP BUILDING

1580 Paoli Pike
West Chester, PA 19380

OFFICE HOURS

Monday through Friday
8am to 5pm
610.692.7171
Fax: 610.692.8950
www.eastgoshen.org

BOARD OF SUPERVISORS

E. Martin Shane
mshane@eastgoshen.org
Senya D. Isayeff
sisayeff@eastgoshen.org
Carmen R. Battavio
cbattavio@eastgoshen.org
Janet L. Emanuel
jemanuel@eastgoshen.org
Charles W. Proctor III
cproctor@eastgoshen.org

TOWNSHIP MANAGER

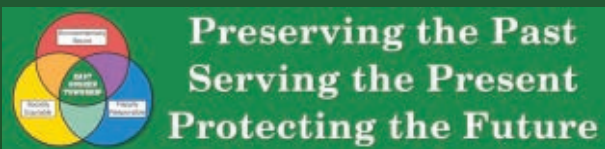
Louis F. Smith, Jr.
rsmith@eastgoshen.org
610.692.7171

MEETINGS

East Goshen Township meetings are advertised in the Daily Local News. All Township meetings and workshops, with the exception of Board of Supervisors executive sessions, are open to the public

Thank You To The Businesses

The Board of Supervisors would like to thank the businesses that appear in this newsletter and to recognize them each as supporters and cornerstones of our community. For it is with their contributions that this newsletter has been produced at minimal charge to our residents.



FROM THE CHAIRMAN . . . continued from cover

and Commissions who participated in these efforts.

A significant element of each of these plans is the construction of a multi-use trail along the entire length of Paoli Pike from Airport Road to Line Road. McMahon Associates has prepared a preliminary design with cost estimates and will assist the Township in preparing grant applications for the engineering and construction of the **Paoli Pike Trail**. Many thanks to the Trail Committee for their efforts.

Some great news, PennDOT resurfaced **Greenhill Road** from North Chester Road to Boot Road in early November. Goodbye potholes. In addition, the Township is discussing with PennDOT the possibility of the Township repairing the potholes on all State Roads within the Township. PennDOT would reimburse the Township for all material and labor costs.

Once again, **Community Day and the Pumpkin Festival** were great successes. Over 4,000 folks participated in Community Day and over 2,000 folks attended the Pumpkin Festival. The weather was great, and a good time was had by all. Many residents commented that they liked Community Day at the end of August as was the case this year because of the rainout in June. Kudos to Jason Lang, our Director of Recreation, for another outstanding job.

As mentioned in previous newsletters, the Township has an e-mail communication service called "Constant Contact". Residents are able to receive timely information on specific areas of interest. Residents can sign up by going to the Township's website at www.eastgoshen.org.

The Board welcomes feedback and suggestions from our residents. You may call the Township at 610-692-7171, respond through our website or contact me at mshane@eastgoshen.org.

Marty Shane

E. Martin (Marty) Shane, Chairman
Board of Supervisors

THANK YOU!

Great job Scouts Pack 122! 3,381 pounds of food were collected for the benefit of the West Chester Food Cupboard in the neighborhood fall food drive. Thank you to all the EGT residents who made this possible!



TECNIPLAST
innovation through passionSM

COMMERCE COMMISSION'S SPOTLIGHT ON BUSINESS

THE COMMERCE COMMISSION (CC) IS AS PLEASED AS IT IS PROUD TO INTRODUCE TECNIPLAST USA, THE WORLD'S LEADING MANUFACTURER OF "MODULAR HOUSING FOR LABORATORY MICE" WITH COMPUTERIZED CLIMATE CONTROL, INDIVIDUALIZED SUSTENANCE DISPENSING, PLUS AUTOMATED BEDDING CHANGING AND CLEANING SYSTEMS. THESE ARE ALSO KNOWN AS CAGES - FOR LABORATORY MICE, RATS, AND OTHER ANIMALS.



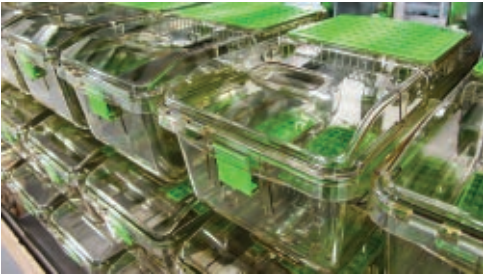
EAST GOSHEN—HOME OF THE WORLD'S LEADING MANUFACTURER OF MODULAR HOUSING...(WITH A SPECIAL TWIST)

The story behind the story of this contented neighbor and good friend to East Goshen is that it chose us as its home back in 2010. A rather remarkable story of yet another entrepreneurial enterprise in the Township had its beginnings in Italy after World War II amid the devastation and need for so much. Plastic was "new" and the founder of Tecniplast, an engineer by trade and still very active now in his nineties, saw a need and beneficial use for molding poly-carbonate into actual cages for laboratory species. By the early 1960's, in conjunction with the mega German chemical & pharmaceutical corporation Bayer AG (yes, the aspirin folks), the story of Tecniplast (technology & plastics) began to unfold with its first cage for laboratory mice. By the mid-80's, a new generation entered the company, evolving and enlarging the product line with a "full line of products," including a modern vivarium (a place where universities host their mice!). Demand for these was great and subsidiaries were established in the UK, Germany, France, the US, and Japan.

Tecniplast North America Headquarters was founded in 1999, and initially was located just north of us in Eagleville, PA. In 2009, the Corporation decided to start manufacturing locally to better serve the USA and Canada. The commute to Eagleville was difficult for both management and employees. Its President & CEO, Marco Carrara, made a decision and captivated our Board of Supervisors and Planning Commission when he discussed his company, his daily drive through Chester County and especially East Goshen via back roads to avoid congested routes & expressways, and described how and why he chose to settle Tecniplast USA right here in East Goshen! Today, a 77,000 sq. ft. building, sitting on a 12-acre lot in the Goshen Corporate Park, hosts the company's manufacturing facility, a centralized warehouse, client services, and marketing and administrative offices.



"We knew this was going to be a big project, but we saw it necessary in order to remain customer centric, improve processes, and stay competitive," said Marco Carrara. "Having local manufacturing capabilities was a game changer and a key element to deliver higher satisfaction to our customers as we are able to achieve faster lead times, enable better inventory of finished products and spare parts availability, and provide technical service and support quickly when and where they're needed," he added.



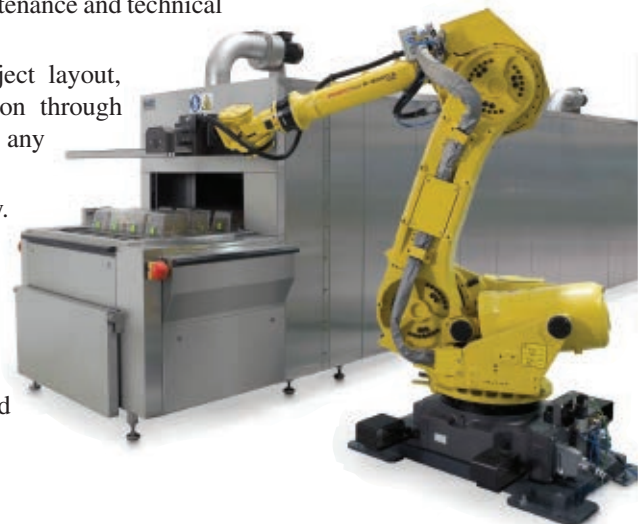
With over 70 employees, including regional sales, Tecniplast runs daily operations in the USA and Canada to fulfill orders for more than 250 customers and provide national coverage of technical service and support for an installed base of more than 400 pieces of its washing and automation equipment, and thousands of its housing systems.

"As a system provider, we know how critical it is for a lab animal facility to run its operations efficiently, so it was important for Tecniplast to deliver a quick turn around time in the areas of training, preventive maintenance and technical support" said Carrara.

The U.S. staff includes experienced project managers, a team skilled in project layout, cooperative design and integration that can support any project from conception through commissioning, and it works in tandem with architects and engineers to ensure that any facility will operate at peak performance levels.

Tecniplast has more than 60 years of experience in the laboratory animal industry. Its clients are the "Who's Who" of scores of the most prestigious universities, medical & pharmaceutical research centers, and US government agencies.

The Commerce Commission hopes you have enjoyed learning about Tecniplast as more than a brick building within East Goshen's corporate parks as much as we have enjoyed presenting them to you, with personal pride going back to Marco's initial meetings with the Township. Profound thanks to Marco Carrara for his input and guidance and to Tecniplast USA.



Albert Zuccarello, Commerce Commission

SUSSKY AGENCY

WE ARE MOVING and CHANGING OUR NAME

**As of the end of this year,
We will be moving to:**

**Village Square Shopping Center
(2nd floor, above Vano's Pizza)
1389 East Boot Road
West Chester, Pa. 19380**

At that time our name will change to:

**Body Borneman
Insurance Agency**

Stop in and visit us and see our new office.

**Remember, if your insurance isn't with us,
you're probably paying too much!!**



LATEST NEWS FROM THE PARK & REC COMMISSION

It is an exciting time to be a member of the East Goshen Township Park and Recreation Commission. We are currently working on the East Goshen Park Master Plan in partnership with Tom Comitta Associates (TCA). TCA also authored the recently adopted Comprehensive Plan and has considerable insight into the importance of parks and open space to residents. The Master Plan's chief goal is to forecast park use over the next ten years – understanding how local residents will use the park, what recreational opportunities they will want to pursue, and how to best position park facilities and amenities to meet residents' needs.



The Master Plan is principally focused on one major park improvement – the renovation of the current tot lot area! It will be transformed into a destination playground space, complete with a central design or “play flow”, plenty of shaded areas for parents and kids, and the latest play structures and activities for all ages, abilities and interests. Public input in this process is paramount – after all, East Goshen kids and families will be the ones using it! By the time this newsletter hits your mailbox TCA will have already presented a draft of the Master Plan to the Board of Supervisors and shortly thereafter will hold a public open house to solicit resident feedback. East Goshen Park is your park – please, come out to the public open house and tell us how to make it even better! We have received a fantastic amount of feedback from playground users already – both East Goshen Elementary School and Goshen Friends School opened their doors and allowed East Goshen staff to poll kids about playground themes and equipment ideas. Thank you very much to East Goshen Elementary School and Goshen Friends School for their continued support of township endeavors.



We would also like to thank Mr. PJ Viloski for his many years of dedicated service to the Park and Recreation Commission. You have no doubt seen him coordinating groups of volunteers at Community Day or as “guest” contestant at our inaugural Pumpkin Pie Eating Contest in 2014. He has played a key role in reigniting an enthusiastic vigor within this unique volunteer group and we thank him much for his energy and commitment. The Park Commission would also like to extend an invitation to East Goshen residents to apply to become our newest member – if you care about your park, open space and the larger East Goshen community, volunteer your time and expertise!

2015 has been a banner year for the Park and Recreation Commission and East Goshen Park. Enrollment in nearly all programs was through the roof; we offered our first destination National Parks trip; and the Parks, Recreation and Open Space Plan Update was adopted.



East Goshen Park has become a hub for many special events in the area –in 2015 alone it played host to the YMCA Healthy Kid's Day, numerous 5k walk races and the fantastic FSFOT Fall Festival, not to mention our very own bevy of special events, including Community Day with the best fireworks display in Chester County! As we close the door on 2015, we hope you take the time to celebrate the season with family and friends, and look forward to ringing in a banner 2016! The park will once again wake up early in spring, shaking off the winter cold with the annual Egg Hunt, little league baseball and a host of other special events. See you soon!

Joe Zulli, Chairman, Park & Recreation Commission



SAVE THE DATE!
KEEP EAST GOSHEN BEAUTIFUL DAY
 SATURDAY APRIL 2 (APRIL 9 RAINDATE)
 CALL THE TOWNSHIP FOR MORE INFORMATION.



East Goshen Recreation

WINTER 2016

YOUTH ACTIVITIES

WINTER ROBOTIC LEGO MINI-CAMPS

DATE: JANUARY 15TH, 12PM – 3PM

FEBRUARY 11TH, 12PM – 3PM

MARCH 11TH, 12PM – 3PM
(SPRING SUMO-BOT CHALLENGE DAY!)

LOCATION: East Goshen Township Building

AGES: 6-12

DESCRIPTION: The Robotic Lego's Camps were wildly successful and a whole lot of fun this summer and fall! Let's keep the excitement going! When schools are out – Robotic Lego's Mini-Camps will be open! These one day mini-camps will keep your kids excited and engaged and are for the Beginner or Intermediate level camper!

FEE: \$35 **MAXIMUM ENROLLMENT:** 10

WINTER ANIMATION DESIGN MINI-CAMPS

DATE: FEBRUARY 10TH, 12PM – 3PM

LOCATION: East Goshen Township Building

AGES: 9-12

DESCRIPTION: Do something awesome on your half day off from school! Learn simple and fun techniques for creating your own animations – characters, scenes and dialogue! The camp utilizes the Scratch animation platform – and is sure to be a hit!

FEE: \$35; **MAXIMUM ENROLLMENT:** 10



LEARN TO ICE SKATE CLASS

DATE: FEBRUARY 2ND – MARCH 9TH,
WEDNESDAYS FROM 1PM-2PM

LOCATION: Ice Line, 700 Lawrence Drive, West Chester, PA 19380

AGES: 3 - 6

DESCRIPTION: It is amazing how these children progress in just 6 weeks! Hands down – this is our most popular toddler program and fills up quickly! Class consists of one half hour of instruction and then one half hour practice time. Parent or guardian is welcome on ice during practice time at no charge. Free rental skates. Bicycle helmets required.

MAXIMUM ENROLLMENT: 24; – has been at max capacity two weeks prior last two sessions

FEE: \$105

ADULT/SENIORS

SENIORS CARD CLUB

DATE: EVERY OTHER FRIDAY, JANUARY – MAY, 10AM-12PM

LOCATION: East Goshen Township Building

DESCRIPTION: Play some great card games with friends and share in the laughs and memories!

FEE: Free!

INTRODUCTORY SCRAPBOOKING WORKSHOP

DATE: FRIDAY, FEBRUARY 5, 2016 | 6-7:30 PM

LOCATION: East Goshen Township Building

DESCRIPTION: If you have admired scrapbooks of others and thought, I could never do that or it must take so much time to make those pages - this class is for you! There are brand new scrapping techniques and products that allow those on the go to make beautiful scrapbooks - quickly, easily and without a lot of fuss! In this introductory workshop I will show you how to make a beautiful layout without stress and we will pocket page scrapbook too. No tools necessary – just bring some pictures (or they can be added later).

FEE: \$25.00 | **CLASS LIMIT:** 12 (Deadline to sign up Fri, Jan 8th)

INTRODUCTORY GREETING CARD WORKSHOP

DATE: FRIDAY, FEBRUARY 19, 2016 | 6-7:30 PM

LOCATION: East Goshen Township Building

Description: If you love color and texture and want to express your creative side, card making is a fun way to craft something unique to share with friends and family in those important moments of their lives. In this introductory workshop you will learn basic card making and stamping techniques. You will make four greeting cards and have some supplies left over to take home. No tools necessary.

FEE: \$15.00 | **CLASS LIMIT:** 12 (Deadline to sign up Fri, Jan 22nd)

ABOUT THE INSTRUCTOR

Donna Gunia, a township resident, has been an avid scrap booker and paper craft enthusiast for 15+ years. In her classes, she will show you how to take those special moments you have captured in photos and preserve them on beautiful pages that you can share with family and friends in scrapbooks or home decor frames. Card making is a great way to express creativity, work with color and patterns - express a sentiment to those you care about.



LUNCH-TIME HEALTH DISCUSSION SERIES WITH AMY WATSON, CERTIFIED HOLISTIC HEALTH COACH

ALL CLASSES IN THE TOWNSHIP BUILDING,
2ND FLOOR AT 12PM

January 14 – “Goal Setting for the New Year”

Want to “be the change that you wish to see in the world” start in 2016! Come and be inspired to start living your best life.

February 25- “Eating for Energy”

Learn what foods increase or decrease our energy supply and the many factors that contribute to our sense of vitality.

March 31 – “Farm to Table”

Learn about the food and the people from the East Goshen Farmers Market and CSA's in our area too!

ABOUT THE INSTRUCTOR

Amy Watson has been a resident of East Goshen Township for the past 13 years and is a certified Holistic Health Coach through the Institute of Integrative Nutrition (IIN). She believes an active, healthy lifestyle is an achievable goal for all and looks forward to sharing her insights and expertise with you!



FITNESS

ZUMBA TONING

**DATE: TUESDAYS, SESSION ONE: JANUARY 5-FEBRUARY 9;
SESSION TWO: FEBRUARY 23-APRIL 5**

TIME: Zumba Gold Toning for Seniors/Beginners (5:30pm -6:45pm); Zumba Toning (7:00pm – 8:15pm)

LOCATION: East Goshen Elementary School

FEE: \$65 or \$120 for both sessions – save \$10!!



PILATES

**DATE: WEDNESDAYS, SESSION I, JANUARY 6-FEB 10TH (\$65);
SESSION II, FEB 17TH-APRIL 30TH (\$75)**

TIME: 10:30am-11:30am

LOCATION: East Goshen Township Building

DESCRIPTION: Pilates is a fantastic fitness class geared for those wanting to strengthen core muscles groups, improve posture, flexibility and balance. Instructor Ruby Telehorster has over 500 training hours and is adept at coaching novices all the way through “seasoned pros”! **Please bring a mat to class.** Want to try the class before locking in for the full session – drop in for \$13 (must pay by check and fill out Registration form)!

YOGA

DATE: JANUARY 4TH – APRIL 7TH

LOCATION: East Goshen Township Building

DESCRIPTION: Yoga is taught by the incomparable Charo Cabello. Let her guide you on a journey towards peace and serenity as you learn to breathe deeply and relax fully. Charo has been teaching for over 18 years and enlivens any room with her welcoming and engaging smile. **Please bring a yoga mat, small pillow and wear comfortable clothes.**

MONDAY Jan 4th - April 4th **TUESDAY** Jan 5th - April 5th
- Gentle Yoga 9 am - 10:15 am - All Levels 5:30 - 6:45 pm
- Meditation 10:30am - 11:30 am - Gentle Yoga 7:00 - 8:15 pm

THURSDAY Jan 7th - April 7th
- Seniors Yoga 4 - 5 pm
- All Levels 5:30 - 6:45 pm

FEE: \$120 for 14 Week Series; \$90 for the Seniors Class

Please make all checks for Yoga and Meditation classes payable to Charo Cabello and send the Registration Form to:

2505 Winterbridge Lane, West Chester, PA 19382

SAY GOODBYE TO SCIATIC PAIN!

**LEARN SIMPLE YOGA STRETCHES THAT CAN HELP EASE THE PAIN
OF SCIATICA AND YOU'LL RECEIVE HANDOUTS TO CONTINUE YOUR
HEALING AT HOME.**

NO YOGA EXPERIENCE NEEDED.

DATE: SATURDAY, JANUARY 23RD, 2016

TIME: 12:00 pm - 2:00 pm

LOCATION: Sama Center, 1240 West Chester Pike, Suite 207,
West Chester PA 19382 www.samacenter.com / 610-692-8082

FEE: \$45

The Park Commission currently has a vacancy for a **Commission Member**. If interested, please contact Jason Lang, Director of Recreation, at 610-692-7171 for details.

Did you know the East Goshen Farmers Market recently won a Daily Local 2015 Reader's Choice Award in the Farmers Market Category! Thank you to all the vendors for amazing food and friendly service and to those that voted for us!



Interested in joining the Summer Farmers Market as a vendor? We are specifically looking for a cheese/dairy vendor, but welcome all applications! The deadline for new vendor applications is March 31st, 2016. If interested, please contact Jason Lang, Director of Recreation, at 610-692-7171 for details.

The Recreation Department is currently seeking Volunteer Instructors in Art, Horticulture, and Astronomy. If you are a local resident interesting in sharing your knowledge and expertise, contact Jason at 610-692-7171!

Required Recreation Registration Form *(Please Submit With Payment)*

This form must be filled out **completely** and your check must accompany to complete registration.

*(This form is not for Youth Recreation Camp and Applebrook Golf –
please visit the East Goshen Recreation webpage or office for those forms)*

Please fill in each Activity Name below along with activity fee, dates and times.

	NAME & EMAIL ADDRESS	RESIDENT?	ACTIVITY & DETAILS	COST	CELL PHONE	ADDRESS including ZIP
1	<div></div> <div></div> <div>DOB*</div>	<div></div>	<div>Activity Name:</div> <div>Session Dates:</div> <div>Day(s) <input type="checkbox"/>M <input type="checkbox"/>T <input type="checkbox"/>W <input type="checkbox"/>Th <input type="checkbox"/>F</div> <div>Time: <div></div> AM or PM <div></div></div>	\$ <div></div>	<div></div>	<div></div>
* Date of Birth is required if registrant is under the age of 18						
2	<div></div> <div></div> <div>DOB*</div>	<div></div>	<div>Activity Name:</div> <div>Session Dates:</div> <div>Day(s) <input type="checkbox"/>M <input type="checkbox"/>T <input type="checkbox"/>W <input type="checkbox"/>Th <input type="checkbox"/>F</div> <div>Time: <div></div> AM or PM <div></div></div>	\$ <div></div>	<div></div>	<div></div>
* Date of Birth is required if registrant is under the age of 18						
3	<div></div> <div></div> <div>DOB*</div>	<div></div>	<div>Activity Name:</div> <div>Session Dates:</div> <div>Day(s) <input type="checkbox"/>M <input type="checkbox"/>T <input type="checkbox"/>W <input type="checkbox"/>Th <input type="checkbox"/>F</div> <div>Time: <div></div> AM or PM <div></div></div>	\$ <div></div>	<div></div>	<div></div>
* Date of Birth is required if registrant is under the age of 18						
4	<div></div> <div></div> <div>DOB*</div>	<div></div>	<div>Activity Name:</div> <div>Session Dates:</div> <div>Day(s) <input type="checkbox"/>M <input type="checkbox"/>T <input type="checkbox"/>W <input type="checkbox"/>Th <input type="checkbox"/>F</div> <div>Time: <div></div> AM or PM <div></div></div>	\$ <div></div>	<div></div>	<div></div>
* Date of Birth is required if registrant is under the age of 18						

I the undersigned, intending to be legally bound for myself, my heirs, executors, administrators, and assigns, hereby waive and release any and all rights and claims for damages I may now or hereafter have against East Goshen Township, and their respective employees for any and all damages or injuries which may be sustained by me or my family arising out of my participation in the above activity. PHOTOGRAPHIC RELEASE. By signing below, I give consent that videotapes, photographs, recordings, motion picture film and/or electronic images of me and other participants may be used by the Township, and its successors and assigns in any and all publications and other media in order to increase community awareness of East Goshen Township programs. I give my consent that such photographs, recordings, motion picture film and/or electronic images and the plates, tapes, and/or software from which they are made shall be the property of the township and the Township has the right to sell, duplicate, reproduce and make such other uses of such photographs, recordings, motion picture film and/or electronic images of me as it desires free and clear of any claim on my part.

Signature of Participant (or Parent/Guardian) _____

I choose to opt out of the PHOTOGRAPHIC RELEASE (please initial) _____

Date Submitted: _____ Amount Paid: _____

Checks must be made out to **East Goshen Township** for the above programs *except* for Yoga & Meditation. The township building address is: 1580 Paoli Pike, West Chester, PA 19380. **If paying online**, please complete the above form, select "Submit Form" (Located On Upper Right Of Your Screen) and then complete payment by clicking [here](#).

For Yoga and/or Meditation class please make check out to Charo Cabello and send to:
2505 Winterbridge Lane, West Chester, PA 19382

Check must accompany this form - Unless you are paying online - Thanks

Questions? Please call 610.692.7171 and or email Jason Lang at jlang@eastgoshen.org

THE CLOCKS OF WINTER



Winter has arrived and a new year is about to begin. It's a time of year when many animals hibernate. For some, it becomes a time to travel to warmer climes. For others it's the time of year for

curling up with a great book, trying out a new recipe, or putting together a project that requires lots of indoor work. In the past, the winter months were used the same way. Our area was rural and agriculturally-based, and the winter months were used to repair equipment, make replacement parts and plan for the coming seasons. In the case of Benjamin Garrett, it was an opportunity to work on his clocks.

The Garrett name is well known in both Delaware and Chester counties. They were early settlers of our area, having purchased land from William Penn. In the case of Benjamin, his grandfather, Joseph, settled here in East Goshen and farmed the land adjacent to the Goshen Friends Meeting. The family farmed the land and operated a grist mill and, in later years, a saw mill and carding machinery. Benjamin was born in 1771 and learned his skills as a joiner and carpenter from his father, both of whom produced "tall clocks", also known as grandfather clocks.

Benjamin's time pieces are examples of some of the finest work done by any clock maker in the country. There is a quality to the cabinetry and diversity to the design that is surpassed by few. His clocks are known for their balanced proportions and high quality cabinetry work. Benjamin was very skilled at the use of inlay, rosettes and finials. Many of his cases were made from native lumber and, in some, the walnut is so finely finished that it is hard to distinguish from mahogany. There is one cabinet that is made of bird's eye maple that is particularly distinctive. Another aspect to his work is that he had a preference for a mechanism that registered the phases of the moon. The majority of his clock's faces have a moon wheel feature.

His clocks were often made for many of the local families. There are stories of neighbors taking a walnut or cherry log to him to be turned into a clock case. The house at the center of Bellingham Retirement Community was built for Benjamin in approximately 1797. It is from there that he raised his family, operated the grist mill and the saw mill, and built his clocks.

So think of Benjamin as you work on your winter project. His clocks have stood the test of time, as can yours as well. Examples of the tall clocks of Chester County can be viewed at the Chester County Historical Society. One of Benjamin Garrett's tall clocks is on display at the Garrett House in Historic Sugartown.

Dolores M. Higgins - Chairman Historic Commission



EXERCISING THE EQUINE ON A WINTER DAY

The lady riding on the horse
looks smart and elegant, of course.

Her legs within her boots are slim.

Her riding habit's sleek and trim.

She posts along a snowy road
wherever drifts are not bestowed.

Until a snow plow comes along,
and horse rears up, spins round, is gone.

The lady meanwhile takes a dive.

Though cold and snowy, she's alive,
but from her elegance, she's rift,
her rear protruding from the drift.

Virginia Strong Newlin
East Goshen Township Poet Laureate



WINTER WEATHER AND SNOW REMOVAL

Pre-storm Preparedness Checklist:

- ✓ No on-street parking to allow for efficient and safe plowing/salting.
- ✓ Have multiday supplies of all essentials, including food, water and prescription medications.

Snow Removal Basics:

1. We put a layer of brine on the road before the snow event starts; this prevents snow from bonding to the pavement and creating ice.
2. Then we put a layer of salt down on the roads when the snow event starts.
3. Once the snow starts to accumulate the plows begin to make one pass in and out of every street until the snow stops.
4. When the snow stops we begin to clear the streets by pushing the snow to the curb.
5. We plow roads in order of traffic priority, beginning with main roads before plowing secondary roads.
6. Cul-de-sacs and storm drains are the final areas to be cleaned up after a storm.
7. The Township does not plow residential driveways.



Important Tips During and After the Storm

1. Do not park on the street during a snow event.
2. When clearing your driveway do not deposit the snow into the roadway; this can cause hazardous conditions to other motorists.
3. When shoveling your driveway leave the last six feet of your driveway un-shoveled until the plowing has ceased. This un-shoveled part will allow the snow being pushed by the plow to remain on the plow and not pushed into your driveway.
4. If an ambulance has been called to an address in the Township, we will help bring in the emergency vehicle.
5. Our snow plow drivers are asked to take precautions to avoid striking mailboxes with their plows, but snow can be extremely heavy and a cold, brittle mailbox can come down easily.



Mailboxes:

1. Expensive/ornate mailboxes should be removed with a basic mailbox for the winter months.
2. Mailboxes should be located so the face of the box is 6 – 8 inches from the edge of the roadway. This is according to USPS guidelines. We suggest putting them as far as 15 inches back from the road edge.
3. Is your mailbox sturdy? Plastic mailboxes tend to become brittle from the sun's UV rays. Make sure the door on the mailbox is closed tightly. If the door is missing or open the mailbox is sure to "fold" on impact of the snow.
4. East Goshen will reimburse a resident \$25 for replacement or repair of a damaged mailbox, provided the resident has advised the Township of said damages within one week of the snow removal operation. The Township does not repair any mailboxes.

Prepare for winter by signing up for ReadyChesco, a County service that notifies residents and businesses about emergencies in our area via landlines, cell phones, emails and texts. Visit <http://www.readychesco.org/> to learn more.



COLD WEATHER PRUNING TIPS

As the weather drifts from drought stress for lawns, shrubs and trees alike, we slowly slide into the frosty grip of winter and begin to think anew about pruning overgrown branches. One question I'm often asked is what's the best time to prune my trees? That's a good question. The answer depends on what you are pruning.

Some varieties of maples, such as our native sugar maple and our native dogwood should never be pruned during the winter months or after they have lost their leaves in the fall. Winter pruning can result in a profuse loss of fluids from the fresh cuts during warm periods when the 'sap' is rising. This fluid is rich in sugars and will attract bacteria that will result in a malodorous conglomerate. It can produce stress for the tree if the amount of cuts precipitates a substantial loss of vital fluids.



However this time of year is an excellent opportunity to prune fruit trees. This year, in particular, the fruit bearing trees had a banner year! So much so, that the production of fruit was self-destructive. Many apple trees supplied a harvest of fruit with a resulting weight that cracked and broke the limbs of the trees. Great for the deer, not so much for the homeowner! In nursery conditions, older fruit trees are culled and new ones are planted. In newer developments where there are pre-existing fruit trees, owners need to make a decision on whether to prune these trees or to remove them. Proper pruning of fruit trees is time consuming and can therefore be expensive. If the work is done by an amateur or by a tree cutter whose knowledge of chainsaws surpasses his knowledge of trees, the job may go much quicker, but remember that you can always take more off...it's

another matter to try and put it back! Ornamental fruit trees can also be addressed during this same period.

The severity of last winter resulted in considerable damage to trees and shrubs alike. There was a heavy toll on crape myrtle and most of our broad-leaf evergreens, including hollies, laurels and rhododendrons. All suffered a significant amount of die-back, browning of foliage and, in some cases, loss of the entire plant or tree.

There is a commercial product that can be applied in the fall to protect these trees and shrubs called "Wilt Proof". The more traditional method would be to shroud the specimens in burlap. Two of the principal stress producers of natural origin to trees, excluding blights and parasites and weather related issues, are severe, extended cold in winter and drought in the warm months. You cannot do much about the extremes of the cold season, but you can water your trees in the summer draught.

Your lawn is not the only thing that suffers; it's just the most noticeable...at first!

T. S. Sanders, Conservancy Board

Mr. Sanders is a consulting arborist who provides consulting services to both East and West Goshen Townships, as well as to law firms in Philadelphia, Kennett Square and West Chester.




East Goshen Branch
1301 Paoli Pike • 610-535-4850

Stop by and ask us about:
Coin Counting • Mobile Deposit • Merchant Services
Courier for Businesses • Instant Issue Debit Cards

M – Th 8:00am - 6:00pm
F 8:00am to 7:00pm
Sat 9:00am to 1:00pm
24 Hour Drive Up ATM

PENNI LIBERTY BANK
FRIENDLY • SMART • LOYAL

WWW.PENNLIBERTYBANK.COM



NO-DIG PIPELINERS, INC

nodigpipeliners@yahoo.com 610-563-3900 PA035462

WE INSTALL SEWER AND WATER LINES
**** WITHOUT DIGGING ****

Local company serving Chester County for 46 years
After hours & emergency service calls answered by a live operator
50 YEAR WARRANTY and Master Plumbers to serve you
We'll beat any competitor's written price upon presentation and review



BARTLETT TREE EXPERTS
SCIENTIFIC TREE CARE SINCE 1987
For the life of your trees.

PA006160

PRUNING FERTILIZATION PEST & DISEASE MANAGEMENT REMOVAL
CALL US AT 610.594.4740 OR VISIT BARTLETT.COM




Engineering, Science, and Design Consulting Services
www.pennoni.com

TRASH/RECYCLING

2016 TRASH HOLIDAY SCHEDULE

Please note that trash will not be picked up on the holidays listed. All debris will be taken on the next regularly scheduled service day.



- January 1, Friday – New Year's Day
- May 30th, Monday – Memorial Day
- July 4th, Monday – Independence Day
- September 5th, Monday – Labor Day
- November 24th, Thursday – Thanksgiving

2016 BULK AND YARD WASTE

YARD WASTE

Only paper bags will be collected, no plastic bags will be taken. You may also use a trash can; however, it cannot weigh more than 50 lbs.



- January – 13th & 27th
- February – 10th & 24th
- March – 9th & 23rd
- April – 13th & 27th
- May – 11th & 25th
- June – 8th & 22nd

- July- 6th & 20th
- August – 10th & 24th
- September – 7th & 21st
- October – 5th, 12th, 19th, 26th
- November – 2nd, 9th, 16th, 23rd, 30th
- December – 7th & 21st



BULK TRASH

A bulk item must be able to be picked up and handled by 2 people. A maximum of two bulk items may be placed out for pickup at one time.

- January – 14th & 15th
- February – 11th & 12th
- March – 17th & 18th
- April – 14th & 15th
- May – 12th & 13th
- June – 16th & 17th



- July – 14th & 15th
- August – 11th & 12th
- September – 15th & 16th
- October – 13th & 14th
- November – 17th & 18th
- December – 15th & 16th

LAMB McERLANE PC
ATTORNEYS AT LAW
Results Driven. Trusted Advisors.

Lamb McErlane - a full service regional law firm proud to be a part of the Chester County community.

24 E. Market St. | West Chester, PA | 610.430.8000
www.lambmcerlane.com

NEW YORK LIFE

Colleen M. Biondi
Financial Services Professional*

New York Life Insurance Company
Licensed Agent
1205 Westlakes Drive
Suite 180
Berwyn, PA 19312
Bus. 484 595 2400 Cel. 484 467 0677
Fax 484 595 2499
cbiondi@ft.newyorklife.com

The Company You Keep®

Century 21
Absolute Realty

Each Office is Independently Owned and Operated.

1314 West Chester Pike, West Chester, Pa 19382
Office (610) 692-6600
Fax (610) 692-2227
www.lcmrealestatewc.com • www.c21absoluterealty.com

ACERO
PRECISION

Precision Parts for Precision Machines
www.AceroPrecision.com



MALVERN PUBLIC LIBRARY

Winter 2016

- Longwood Gardens will be sponsoring a Community Reads Program in 2016. The books selected are: *Grandma Gatewood's Walk* by Ben Montgomery for adults and *On Meadowview Street* by Henry Cole for families. The Library will be having book talks on these selections. Check back with the Library (610-644-7259) in early winter for specific dates and times and other activities.
- We will be starting a new session of storytimes in the New Year. We have Baby Storytime on Mondays at 11 am; Storytime for 2 year olds on Wednesday at 10 am and Thursday at 9:30 am; and Storytimes for 3 to 6 year olds on Wednesday and Thursday. You need to register for these sessions. Call the Library (610-644-7259) for specific times.
- The Woolgathers of Malvern Library meet on the 1st and 3rd Monday of the month from 6:00 to 7:45 pm to share projects, resources and needlework. Stop in to join the fun!
- If you haven't already, be sure to like us on Facebook. We post upcoming events, unusual occurrences and any closure announcements because of weather.

ODDS & ENDS FROM RICK SMITH, TOWNSHIP MANAGER

The Township has installed flashing warning lights at the entrances to East Goshen Park. Two questions that I am frequently asked are: why don't we have a traffic signal at the entrances to the park and who has the right of way at the pedestrian crossing?

Section 6122 of the Pennsylvania Vehicle Code allows municipalities to install traffic signals on public roads provided the traffic conditions meet specific warrants adopted by Penn DOT. Unfortunately, the entrances to the Park do not meet any of the warrants; hence, we cannot install traffic signals at the entrances.

However, the entrances do meet the warrants for pedestrian crossings and the Township has obtained permits from Penn DOT to install the pushbutton activated yellow flashing lights and marked crosswalks at both entrances.

With respect to who has the right of way, Section 3542 of the Vehicle Code reads as follows:

§ 3542. Right-of-way of pedestrians in crosswalks.

(a) General rule.--When traffic-control signals are not in place or not in operation, the driver of a vehicle shall yield the right-of-way to a pedestrian crossing the roadway within any marked crosswalk or within any unmarked crosswalk at an intersection.

(b) Exercise of care by pedestrian.--No pedestrian shall suddenly leave a curb or other place of safety and walk or run into the path of a vehicle which is so close as to constitute a hazard.

(c) Limitation on vehicles passing.--Whenever any vehicle is stopped at any crosswalk at an intersection or at any marked crosswalk to permit a pedestrian to cross the roadway, the driver of any other vehicle approaching from the rear shall not overtake and pass the stopped vehicle.

(d) Application of section.--Subsection (a) does not apply under the conditions stated in section 3543(b) (relating to pedestrians crossing at other than crosswalks).

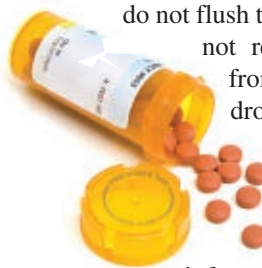
(e) Penalties.--The driver of a vehicle who violates subsection (a) commits a summary offense and shall, upon conviction, be sentenced to pay a fine of \$50.

Unfortunately, many motorists may not be aware of this section of the Vehicle Code, and we would encourage pedestrians crossing Paoli Pike to use care and not assume that all vehicles will automatically stop once they push the button to activate the flashing lights.

The Chester County SPCA is always looking for old towels, sheets, and blankets. The SPCA uses items for bedding in the animal cages. A drop off bin is located at the Township Building.



Do you have old prescriptions you need to dispose of? Please do not flush them down the toilet, since sewer plants do not remove most pharmaceutical compounds from the wastewater. There is a prescription drop off box in the lobby of the Westtown East Goshen Police Department and the lobby is open Monday to Friday, 8:30 am to 4:30pm.



If you would like to receive real time information about East Goshen, please go to our web page at www.eastgoshe.org and click on the link to Constant Contact.



SMOKE TESTING OF SANITARY SEWERS



Smoke testing of sanitary sewers is a preventive maintenance program to identify sources of infiltration and inflow that can enter the public sewer system. The East Goshen Municipal Authority uses this program to locate defects in the public sewer system and in property owners' lateral connections. Typical defects in the public sewer system may be broken sewer pipes, open pipe joints, or manhole defects. Typical defects for property owners may include missing or broken caps on cleanouts, a broken lateral pipe, loose couplings, cross connections with storm drain piping, roof drains inappropriately connected to sanitary sewers, and dry traps in house plumbing.

East Goshen Public Works employees will be conducting smoke testing in 2016. A letter will be sent to property owners that outlines when the smoke testing will be done. In addition, door hanger notices will be placed on the doors of all the properties that will be involved in the testing. These notices will contain the date of the test and contact information for questions and concerns. These notices are placed at least three working days prior to the day of the smoke test date. It is not necessary for you to be home while the testing is being performed.

The testing is performed on sewer manholes that are typically located in the streets or near your residence. NON-TOXIC and NON-STAINING white smoke is inserted into the sanitary sewer system by means of a smoke generating device. During the test, smoke will be observed emitting from manhole covers on the street, clean outs and vent pipes. PLEASE DO NOT BECOME ALARMED; THIS IS NORMAL.

On the day of the smoke test the Township will notify the Police and Fire Departments. Residents may see smoke exiting out of manholes in the street and sewer vents from the tops of houses. If smoke is discovered coming out anywhere else, there is a defect in your plumbing. Several blocks will be tested at a time with each set up taking 20-30 minutes. Residents may speak to

Public Works employees on site during the test to ask questions or they may call the phone number listed on the smoke test notice.

Smoke could enter your home if you have a dry trap within the premises. This may be a basement floor drain or some other unused plumbing fixture. Pouring water down these drains or other seldom-used fixtures will help assure that smoke does not enter your dwelling. A plumbing defect within your building may also allow smoke to enter. The homeowner may want to address this plumbing defect since odors sometimes develop in the sewer system and could possibly enter the home through this defect. In the unlikely event that smoke enters your building, DO NOT BE ALARMED

Open windows and doors to ventilate your house, and contact the Public Works employees outside conducting the smoke test. They will try to assist you in locating the source that allowed the smoke to enter your house. If you can't find the truck, please feel free to phone the Township at 610-692-7171.



After the smoke test has been performed, a Notice of Defect containing a description of the defect discovered and a picture of the defect taken during the smoke test will be mailed to the property owner. If a defect is identified on your property, we would be grateful if you could contact the Public Works Department at 610-692-7171 as soon as the defect is corrected.



Examples of smoke testing in other municipalities

Dana R. Pizarro

East Goshen Municipal Authority Board

LATEST NEWS FROM WESTTOWN-EAST GOSHEN POLICE DEPARTMENT

Congratulations to Officer Weaverling, WEGO's Officer of the Year



On August 25, 2015, Officer Russell Weaverling received the 2014 Officer of the Year award for the Westtown-East Goshen Regional Police Department. The recipient of this award, who is nominated and selected by members of the department, is recognized for his or her total performance, appearance, and attitude. At the same ceremony, Officer Weaverling was also presented with the 2014 Pennsylvania Aggressive Driving Enforcement and Education Award. This award recognizes officers who have demonstrated exemplary efforts to address aggressive driving offenses such as speeding, tailgating, and red light running in an effort to save lives and reduce crashes. Congratulations to Officer Weaverling!

WEGO Participates in Camp Cadet

On August 16, 2015, the Westtown-East Goshen Regional Police Department participated in the emergency vehicle display for the Chester County Camp Cadet program. Camp Cadet is a week-long summer camp program for children between the ages of 11 and 13 who are interested in learning more about law enforcement and emergency services. The police department was represented by Sergeant Pete Keegan. Sgt. Keegan is pictured at the event with his son, who was a camper at Camp Cadet this year.



CLEAN WATER TIPS

Avoid or minimize using rock salt as a deicer on walks and driveways to prevent polluted runoff from snow and ice melt. Substitute calcium magnesium acetate, magnesium chloride or non-chloride deicing products, which are less harmful to streams and lawns.

If you do wash your car at home to remove salt residue, do so in a location the causes the wash water to run off over a grass area and not directly into a storm sewer. This will help keep phosphates and other chemicals out of the streams.

A healthy lawn can absorb more rain water. Have your soil tested so that you can apply the appropriate fertilizer to develop a healthy lawn in the spring.



STATE ROADS: Boot Road, Greenhill Road, N. Chester Road, Strasburg Road and West Chester Pike.

Any residents living on a state road that needs road repair, trees down, or pot holes may call Penn Dot: 484-340-3200

CALL BEFORE YOU DIG: If you have to excavate your property please remember to call before you dig. 1-800-242-1776 or 811 PA One Call

CLOGGED OR LEAKING SANITARY SEWER LINES; SEWAGE SMELL IN THE CREEK:

Call East Goshen Township
610-692-7171 after 5:00pm or before 7:00am call 911

BROKEN WATER MAIN:

Call Aqua Pennsylvania: 610-525-1402 24 hours

SPCA NEEDS YOUR HELP!

The SPCA is always looking for the following items:

- Leashes
- Dog Biscuits & Cat Treats
- Washable Dog & Cat Toys
- Dog and Cat Beds
- Liquid Laundry Detergent
- Bleach & cleaning supplies
- Rawhide Chews
- Peanut Butter
- Towels & Blankets
- Cat Litter



U.S. FLAG DISPOSAL: Any U.S. Flag that is torn or faded and needs to be disposed of properly can be dropped off at the Township for a proper retirement. A local VFW will conduct a proper flag retirement ceremony to dispose of it.



SOME FACTS ABOUT WHITE-TAILED DEER

White tailed deer are the smallest members of the North American deer family, which consists of moose, wapiti or elk, caribou or reindeer, mule deer and whitetails. Whitetails range from Canada to the eastern edge of South America. They inhabit mountains, forests, jungles, swamps and increasingly, towns and cities. They are remarkably adaptive. In the heat of summer they rest in fields and meadows using clumps of broad-leaved and coniferous forests for shade. During the winter they generally keep to forests, preferring coniferous stands that provide shelter from the harsh elements.

A deer's home range is usually less than a square mile. Over time, they make trails or paths between favorite eating and resting areas. Deer collect in family groups of a mother and her fawns. When a doe has no fawns, she is usually solitary. Male bucks may live in groups consisting of three or four, except in mating season, when they are solitary.

White-tailed deer are herbivores and continually graze on available plant foods. Their stomachs allow them to digest almost any vegetation: leaves, twigs, fruits and nuts, grass, corn, alfalfa, and even lichens and fungi. Deer diets change depending on habitat and the season. Deer in the wild eat green plants in the spring and summer. In the fall, they eat corn, acorns and other nuts. In the winter, with not much else available, they switch to the buds and twigs of woody plants. They move quietly from forest to fields to suburban gardens. This is one area where deer come into conflict with humans. Deer do not heed property lines and consider the world to be their pantry.

Deer are ruminants, like cows, bison, goats, llamas, bighorn sheep, camels and giraffes. This means they have a four-chambered stomach. The term "chewing the cud" often applied to cows also applies to deer. Ruminants "reprocess" partially digested food by re-chewing it to extract every scrap of nutrition. This digestive system lets the white-tailed deer eat foods like woody plants that other animals can't digest.

Occasionally venturing out in the daylight hours, white-tailed deer are primarily nocturnal or crepuscular, browsing mainly at dawn and dusk. They move around by established trails to feed, crossing roads in the process. This is another area where humans and deer conflict, when our paths cross in the form of deer-car collisions. Adult whitetails can weigh from 90 to 300 pounds, with bucks typically much larger than does. Deer-car collisions are usually fatal for the deer and sometimes for the human as well.

Adult white-tails have reddish-brown coats in summer which fade to a duller grayish-brown in winter. Bucks are easily recognizable in the summer and fall by their prominent antlers, which grow annually and fall off in the winter. Only bucks grow antlers, which bear a number of tines or points. The number of points corresponds roughly with age (and some hunters think... wisdom). During the mating season, bucks fight over territory by using their antlers in sparring matches. When the antlers regrow bucks relieve the itchiness of the temporary velvet covering by using saplings as "scrapes". Homeowners may, to their chagrin, find their prized fruit tree has been used as a scrape and damaged in the process.

Female deer, or does, give birth to one to three young at a time, usually in May or June and after a gestation period of seven months. Young deer, called fawns, wear a reddish-brown coat with white spots that helps them blend in with vegetation. Fawns can walk shortly after birth and will nibble vegetation a few days later. They are weaned at six weeks. Female fawns will stay with their mother for up to two years, males for one year.

In the wild, whitetail deer's natural enemies are mountain lions and wolves. Coyotes and bobcats sometimes prey on fawns. Whitetails are fast and can hit bursts of speed up to 30 miles per hour and can leap as high as 10 feet and as far as 30 feet in a bound. In suburban and urban environments, the deer's enemies are humans, dogs and automobiles. Deer anywhere can suffer from diseases and parasites, some of which are transmissible to humans and their pets. Overcrowding tends to increase the potential for disease and parasites. One of these, the deer tick, carries Lyme disease which is debilitating to both humans and dogs. The more deer are concentrated, the better the environment for deer ticks. When they drop off deer, they wait for their next host, which could be a dog out in the yard or you working in your garden.

Humans have coexisted with deer for thousands of years. Deer do not do as well in mature forest areas: there is not enough natural food. Agricultural land clearing, however, creates the forest-field boundary ecosystem that is ideal for deer. This inter-dependency has shifted the human-deer relationship in a more symbiotic direction. In the United States extensive hunting in the 19th century severely depleted deer populations. However, the establishment of game management laws in the 20th century, along with prolific breeding rates, have allowed them to recover.

Sources:

National Geographic: <http://animals.nationalgeographic.com/animals/mammals/white-tailed-deer/>

Clemson University: http://www.clemson.edu/extension/natural_resources/wildlife/publications/fs34_whitetailed_deer.html

New Hampshire: <http://www.nhptv.org/natureworks/whitetaileddeer.htm>



DATES OF IMPORTANCE

DECEMBER

DEC 14, MUNICIPAL
AUTHORITY, 7PM

DEC 15, BOARD OF
SUPERVISORS, 7PM

DEC 16, FUTURIST
COMMITTEE, 7PM

DEC 17, COMMERCE
COMMISSION, 7PM

DEC 25, XMAS, TWP
CLOSED

JANUARY

JAN 1, NEW YEARS,
TWP CLOSED

JAN 4, BOARD OF
SUPERVISORS, 7PM

JAN 5, BOARD OF
AUDITORS, 7PM

JAN 6, COMMERCE
COMMISSION, 10:30AM,
PLANNING

COMMISSION, 7PM

JAN 7, PARK & REC
COMMISSION, 7PM

JAN 9, ABC PLANNING
SESSION, 8AM

JAN 11, MUNICIPAL
AUTHORITY, 7PM

JAN 13, CONSERVANCY
BOARD, 7PM

JAN 14, HISTORICAL
COMMISSION, 7PM

JAN 18, MLK DAY, TWP
CLOSED

JAN 19, BOARD OF
SUPERVISORS, 7PM

JAN 20, FUTURIST
COMMITTEE, 7PM

FEBRUARY

FEB 2, BOARD OF
SUPERVISORS, 7PM

FEB 3, COMMERCE
COMMISSION, 10:30AM,
PLANNING
COMMISSION, 7PM

FEB 4, PARK & REC
COMMISSION, 7PM

FEB 8, MUNICIPAL
AUTHORITY, 7PM

FEB 9, PENSION
COMMITTEE, 10:30AM

FEB 9, DEER
COMMITTEE, 7PM

FEB 10, CONSERVANCY
BOARD, 7PM

FEB 11, HISTORICAL
COMMISSION, 7PM

FEB 15, PRESIDENTS
DAY, TWP CLOSED

FEB 16, BOARD OF
SUPERVISORS, 7PM

FEB 17, FUTURIST
COMMISSION, 7PM

MARCH

MAR 1, BOARD OF
SUPERVISORS, 7PM

MAR 2, COMMERCE
COMMISSION, 10:30AM,
PLANNING
COMMISSION, 7PM

MAR 3, PARK & REC
COMMISSION, 7PM

MAR 9, CONSERVANCY
BOARD, 7PM

MAR 10, HISTORICAL
COMMISSION, 7PM

MAR 14, MUNICIPAL
AUTHORITY, 7PM

MAR 15, BOARD OF
SUPERVISORS, 7PM

MAR 16, FUTURIST
COMMITTEE, 7PM

MAR 17, COMMERCE
COMMISSION, 7PM

Sign up for
Constant Contact
to keep up-to-date
on all Township
meetings, events
and activities



Meeting dates are subject to change. Please visit our website to confirm meeting dates.



Be first to get Township news!

GET THE LATEST TOWNSHIP NEWS SENT DIRECTLY TO YOUR INBOX. GO TO WWW.EASTGOSHEN.ORG LOOK FOR "SERVICES" TAB AND CHOOSE "COMMUNICATION" FROM DROP DOWN MENU. OR SIGN UP AT TOWNSHIP BUILDING. CHOOSE THE SPECIFIC INFORMATION YOU WISH TO RECEIVE!



LANDSCAPE & GARDEN CENTER
LANDSCAPE DESIGN & MAINTENANCE
HOLIDAY DÉCOR

Outstanding service in every season

922 North Chester Road, East Goshen, PA 19380
Phone: 610-692-2422 • www.delvacchio.com



John Beardsley, FSCP
Agency Owner

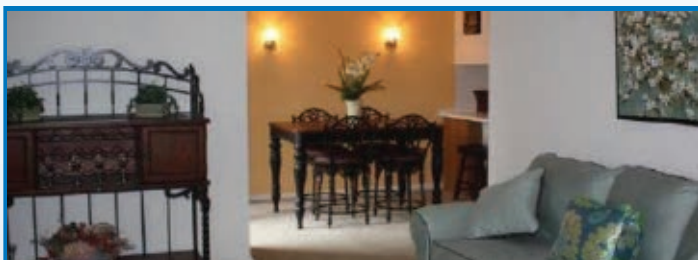
1339 West Chester Pike
West Chester, PA 19382

Tel 484.200.7511

Fax 484.786.4800

jbeardsley@farmersagent.com

Registered Representative, Farmers Financial Solutions, LLC
30801 Agoura Road, Bldg. 1, Agoura Hills, CA 91301-2054
Tel 818.584.0200 Member FINRA & SIPC



Rose Hill Apartments

1322 West Chester Pike • West Chester, PA 19382

610-436-5249

www.rose-hillapartments.com • libby@zarelligroup.com



Remodeled apartments now available

1 bedroom from \$895
2 bedroom/1bath from \$1015-\$1040

DIRECTIONS:

Please call for directions.

OFFICE HOURS: Mon, Wed, Fri 9-5; Tues, Thurs 9-6; Sat 10-2



- Spacious one and two bedroom apartments
- Private patio/balcony
- Fully equipped kitchen
- Large storage room with plenty of closet space
- Swimming pool
- Fitness center
- Conveniently located
- Private off street parking
- Concrete floors and ceilings provide sound dampening
- Full-time maintenance staff with 24-hour emergency call
- High-speed internet/cable
- On-site convenience shops
- Newly renovated apartments available

GATEWAY MEDICAL ASSOCIATES

1240 Wrights Lane • West Chester • PA • 19380

- Karen M. Squire, MD
- George H. Limpert, MD
- John F. Hornick, MD
- Madeline S. Wood, MD
- Charles P. Catania, MD
- Natalie B. Tussey, MD
- Anita Snyder, CRNP
- Sue Villarini, CRNP

NEW PATIENTS ALWAYS WELCOME!

Office Hours:

Monday - Friday:

8:00am - 6:30pm

Saturday: **9:00am - 11:30am**

Walk-In Hours:

Monday & Friday:

4:00pm - 6:30pm

Tues, Wed, Thurs:

5:00pm - 6:30pm

Saturday

9:00am-11:30pm



Seeing patients of all ages

www.gatewaydoctors.com

F: 610-594-2625

P: 610-431-1210

Oriental Pearl RESTAURANT

Sushi and Pan Asian Cuisine

Goshen Village Shopping Center
1550 Paoli Pike (Across CVS) West Chester
610-692-5888 • www.OrientalPearlwc.com

10% off for HM Residents

***BYOB**

Call me today for a complimentary insurance review.
610-430-1600

Mark McCaffrey
1223 West Chester Pike
West Chester
mmccaffrey@allstate.com

Allstate
You're in good hands.

Insurance subject to availability and qualifications. Allstate Fire and Casualty Insurance Co., Allstate Indemnity Co. Northbrook Illinois © 2012 Allstate Insurance Co.

BRANDYWINE VALLEY INSURANCE GROUP

610-436-0999

Mike Rody
Broker

EMPLOYEE BENEFITS • FSA PLANS
LIFE/DISABILITY INSURANCE • LONG TERM CARE

19 S. High St., West Chester, PA 19382 • Fax: 610.436.0117 • e: mrody@brandywineinsurance.com

Matlack Florist

country elegance in flowers & gifts

210 N. Chester Rd. (Rte. 352) West Chester, PA 19380
610-431-3077
www.MatlackFlorist.com

Proudly Celebrating The Special Moments Of Your Life For 35 Years.

**A Leader in the Global Communications Industry...
A reliable friend & partner in the community!**

A Legacy of Community Support & Leadership

Since 1975, CTDI has promoted a culture of community support and leadership. We are proud of our employees who reach out to others and take an active role in their community.

CTDI strives to be a reliable friend and partner who provides a positive impact on many community organizations.

CTDI HQ: 1373 Enterprise Drive, West Chester, PA 19380 • www.CTDI.com



EAST GOSHEN TOWNSHIP

1580 Paoli Pike
West Chester, PA 19380

PRSRT STD
U.S. POSTAGE
PAID
HARRISBURG, PA
PERMIT NO.609



WINTER 2016 NEWSLETTER

hometownpress

This Community Newsletter is produced for
East Goshen Township by Hometown Press
215.257.1500 • Dec 2015 All rights reserved®

To Place An Ad Call John Tully at Hometown Press • 610.361.0567

James H. Douglass Owner

1554 Paoli Pike, East Goshen Twp.
West Chester, PA 19380-6123

M-F 9 am - 6:30 pm
Sat. 10 am - 4 pm

610-692-6076
610-692-9652 fax

store0753@theupsstore.com
theupsstorelocal.com/0753



The UPS Store®

**CHRIST MEMORIAL LUTHERAN CHURCH
and SCHOOL**

89 Line Road, Malvern, PA 19355
Phone: 610-644-4508
www.christmemorial.us

Sunday Services:
8:30 & 11:00 am
Sunday School & Adult Bible
Study: 9:45 am

Advent Worship: Wednesday
Dec. 2nd, 9th & 16th @ 6:45 pm

Live Drive-Thru Nativity
Friday, Dec. 18th; 6 pm - 9 pm
Saturday, Dec. 19th; 5 pm - 8 pm

Christmas Eve Worship:
Dec. 24th @ 5pm, 7:30 pm & 10 pm

Christmas Day Worship:
Dec. 25th @ 10 am



RE/MAX® PREFERRED REALTORS

1595 Paoli Pike Suite 101 • West Chester, PA 19380

Full Time, Full Service Realtor with 24 Years
Experience In Residential Sales, Servicing
Both The Chester And Delaware County
Areas. I know The Many Benefits East Goshen
Township Has To Offer. Service, Hard Work,
Honesty And Reliability Are Qualities I Use
As The Foundation For My Business.

Resident of Marydell Farms



Your Neighborhood Realtor!



www.facebook.com/JohnJam.realestate



"John Jam"
Jamgochian
Associate Broker

Direct: 610-235-4400

Office: 610-719-1700

www.JohnJam.com

RealtorJohnJam@gmail.com

Annual Backflow Device Testing If You Have a Lawn or Fire Sprinkler System Then You Need Us **610-692-7785**

www.ProfessionalBackFlow.com



**Attention Homeowners
& Business Owners:**
"Annual Backflow Test" is
required by Pennsylvania
law annually.

610-692-7785

**Don't Let Your Water Company
TURN YOUR WATER OFF**
Schedule Your Annual Backflow Test Now

15% OFF
YOUR ANNUAL SERVICE
New Customers
Present Coupon AFTER ESTIMATE
SAVE UNTIL NEEDED

- Certified A.S.S.E. Professional Tester & Repair
- Locally Owned & Operated

Residential • Commercial • Condominium/Apartment Bldgs

KEEP YOUR DRINKING WATER SAFE

Professional Operation Service Angies list