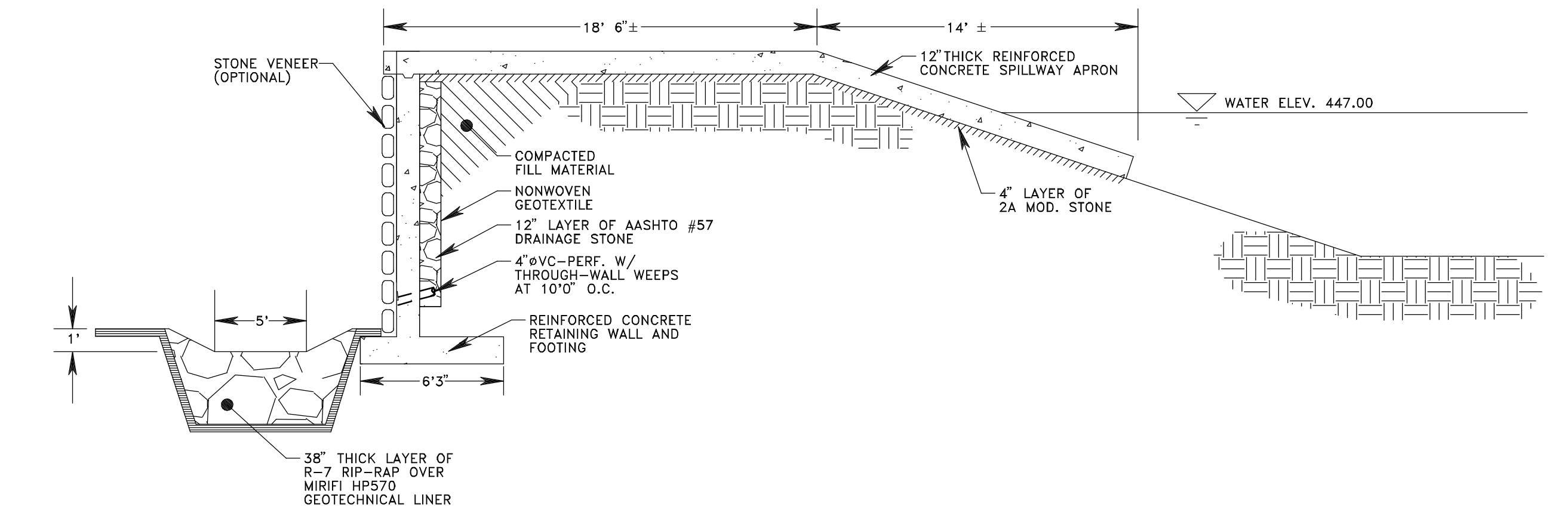
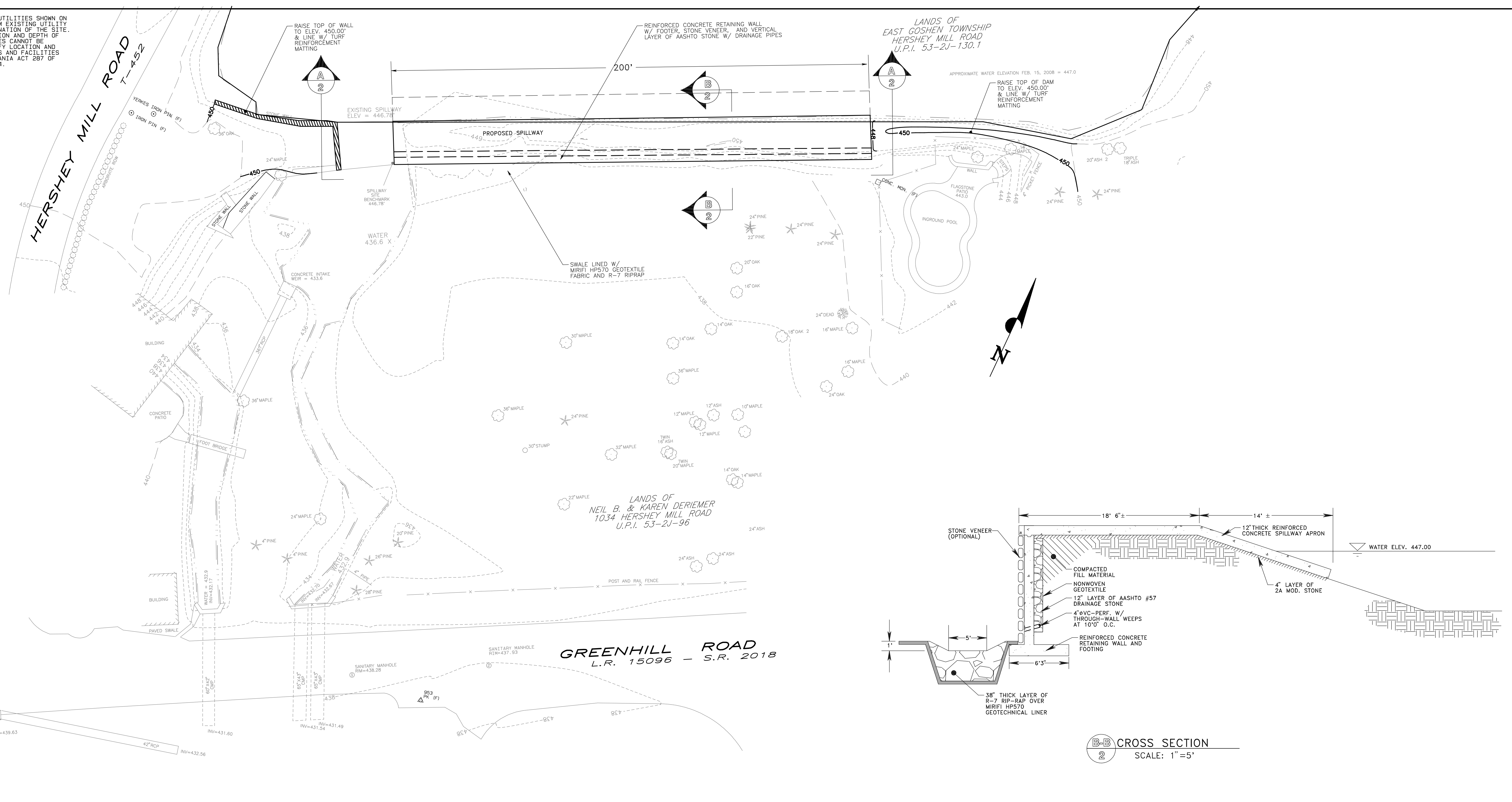
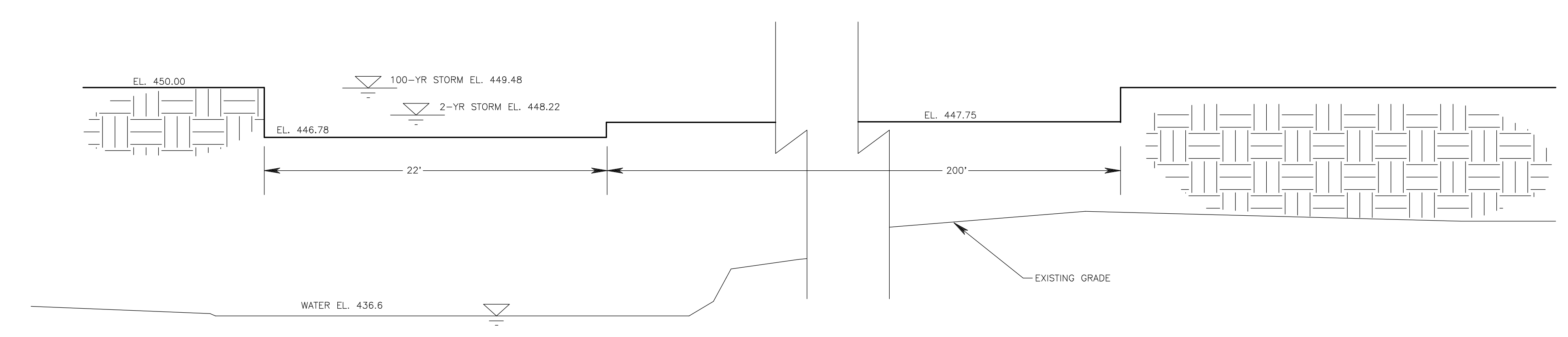


NOTE: ALL LOCATIONS OF EXISTING UTILITIES SHOWN ON THIS PLAN HAVE BEEN DEVELOPED FROM EXISTING UTILITY RECORDS AND/OR ABOVE GROUND EXAMINATION OF THE SITE. COMPLETENESS OR ACCURACY OF LOCATION AND DEPTH OF UNDERGROUND UTILITIES OR STRUCTURES CANNOT BE GUARANTEED. CONTRACTOR MUST VERIFY LOCATION AND DEPTH OF ALL UNDERGROUND UTILITIES AND FACILITIES BEFORE START OF WORK PER PENNSYLVANIA ACT 287 OF 1974 AS AMENDED BY ACT 199 OF 2004. SERIAL #



B-B CROSS SECTION
SCALE: 1"=5'



A-A PROPOSED SPILLWAY
APPROX. SCALE: 1"=5'

NO.	DATE	REVISION COMMENT
OPTION 1: ADDITIONAL CONCRETE SPILLWAY		
PRELIMINARY		
HERSHEY'S MILL DAM RESTORATION		
PREPARED FOR		
EAST GOSHEN TOWNSHIP		
East Goshen Township • Chester County • Pennsylvania		
Yerkes		PROJECT - W-08-4278-006
YERKES ASSOCIATES, INC.		DATE - 3/28/2008
CONSULTING ENGINEERS • SITE PLANNERS • LAND SURVEYORS		SCALE - AS NOTED
1444 PHOENIXVILLE PIKE • P.O. BOX 1568 • WEST CHESTER, PA 19380 TEL: (610) 644-4254 • FAX: (610) 640-0771		DRAWN - PB
		CHECKED - MC
		CAD FILE - W4278-06.PRO
		TAX PARCEL -
		NOTEBOOK -
		PLAN NO.
		SHEET 2 OF 4