

EAST GOSHEN MUNICIPAL AUTHORITY

November 10, 2014

Monday 7:00 PM

1. CALL TO ORDER/PLEDGE OF ALLEGIANCE/MOMENT OF SILENCE
 - a. Ask if anyone will be taping the meeting?
2. CHAIRMAN'S REPORT/OTHER MEMBERS REPORTS
3. SEWER REPORTS
 - a. Director of Public Works Report
 - b. Pennoni Engineer's Report
 - c. Big Fish Environmental Inc. Report with DMR's August
 - d. East Goshen Township Flows
3. APPROVAL OF MINUTES
 - a. October 13, 2014
4. APPROVAL OF INVOICES

a. Pennoni	Invoice #611142	\$ 28.25
b. Pennoni	Invoice #611143	\$ 247.50
c. Pennoni	Invoice #611144	\$ 141.25
d. Pennoni	Invoice #611145	\$ 3856.00
e. Gawthrop	Invoice #124666	\$ 280.00
5. LIAISON REPORTS
6. FINANCIAL REPORTS
 - a. October 2014 Report
7. OLD BUSINESS
8. GOALS
 - a. Review current mission statement and provide the Board of Supervisors with changes, if needed – June 1, 2014

May 8 – The MA does not have a current mission statement. A first draft included in the packet. June 9 – Changed “lease” to “leasee”. Mission Statement approved by MA on June 9 - Completed
 - b. Submit an article for each newsletter – Due date for newsletter

Need by 1/31/14 – Dana **Completed**
Need by 4/30/14 – Jack **Completed**
Need by 7/1/14 - Kevin **Completed**
Need by 10/31/14 – Ed **Completed**
Need by 2/13/15

- c. Obtain PA DEP approval for the Act 537 Plan revision for the Reservoir Road Pump Station – December 31, 2014

May 8 - Revisions submitted to EGMA, EGPC, WGSTP, CCHD, and CCPC
July 14 – BOS scheduled to adopt resolution at their meeting on August 19.
Resolution adopted and Plan revision sent to PA DEP on August 25.

- d. Develop a recommendation on covers for the SBRs – August 1, 2014
May 8 – Draft memo distributed. June 9 – Final memo in packet - Completed

- e. Attend West Goshen Meetings quarterly – more often if needed.

1st Quarter (March) – Jack- **Completed**
2nd Quarter (June) – Ed- **Completed**
3rd Quarter (September) Ed - **Completed**
4th Quarter (December)

- f. Respond to capacity requests in 45 days or less.
211 Ellis Lane – 1 EDU existing house, 195 Wyllpen Place – 1 EDU existing house, 3 Lucas Lane – 44 EDUs.

- g. Continue to implement I & I Plan

April 14 – Status Report received
October 8 – Status Report Received

- h. Operate RCSTP in compliance with NPDES Permit

January, February, March, May, June, July, August, September

9. NEW BUSINESS

- a. Authorize Chairman to execute grant agreement
- b. Authorize Chairman to execute revised stormwater drainage agreement
- c. Pennoni 2015 Fee Schedule
- d. Gawthrop Greenwood, PC 2015 Fee Schedule
- e. Reservoir Road PS- Permit Durations

10. CAPACITY REQUESTS
 - a. Callaghan Subdivision 1131 N. Chester Road Capacity request
11. ANY OTHER MATTER
12. CORRESPONDENCE AND REPORTS OF INTEREST
13. PUBLIC COMMENT
14. ADJOURNMENT



MEMORANDUM

TO: East Goshen Municipal Authority Board
Rick Smith, Township Manager

FROM: Michael Ellis, P.E.
Authority Engineer

DATE: November 6, 2014

SUBJECT: Engineer's Report

Invoices

- Invoices with summaries are provided under separate cover.

Reservoir Road Pump Station Act 537 Plan

- The Act 537 Plan Update was submitted to PADEP on August 25, 2014. PADEP has reviewed the Plan Update, and they provided two comments which we are in the process of addressing:
 - We submitted revised Plan Update pages to address a project scheduling comment on October 16.
 - The second comment is that U.S. Fish & Wildlife Service (USFWS) approval is required. We are still awaiting USFWS's formal approval, and we have contacted them several times to request a written approval.
- Tentative Act 537 Planning schedule:

	<u>Estimated Date</u>
○ Submission to PADEP	August 25, 2014
○ USFWS approval	estimated by November 14, 2014
○ PADEP Review and Approval (120 days).....	by December 23, 2014

New Sewer Connections

- We reviewed revised grinder pump plan submissions for a proposed house and grinder pump at 610 Reservoir Road.



Monthly Operations Report: October 2014

Treatment Process Operation

During September 2014, there were no exceedances of the final effluent discharge limitations for outfall 001 and discharge from Outfall 002. The total phosphorus monthly average concentration of 0.31 mg/L as compared to the permitted limitation of 0.50 mg/L. Table 1 illustrates the final effluent composite sample data reported for the August 2014 eDMR. During the month, the final effluent total phosphorus concentration discharged ranged from 0.18 mg/L to 0.53 mg/L. A daily average of 99 gpd of aluminum sulfate solution was used which was consistent with the 99 gpd average for August.

Table 1

September 2014 - Final Effluent - Out Fall 001											
NPDES Permit Discharge Limitations	Flow	CBOD ₅		TSS		NH ₄ -N		Phosphorus, Total , mg/L		Fecal Coliform	
	MGD Average	mg/L	lbs/ month	mg/L	lbs/ month	mg/L	lbs/ month	mg/L	lbs/ month	Geo Mean	Geo Mean
	0.75	20	125	21	131	7	44	0.5	3	200	1,000
	Instantaneous Maximum	40		42							
Sample Date											
September 2, 2014	0.173	2.0	2.9	2	3	0.157	0.23	0.18	0.26	1	0.0000
September 8, 2014	0.230	2.4	4.6	6	11	0.191	0.37	0.53	1.02	1	0.0000
September 16, 2014	0.134	2.0	2.2	2	2	0.194	0.22	0.39	0.44	1	0.0000
September 23, 2014	0.138	2.4	2.8	3.0	3	0.235	0.27	0.24	0.28	1	0.0000
September 30, 2014	0.136	2.2	2.5	3.0	3	0.22	0.25	0.21	0.24	2	0.3010
Average	0.162	2.2	3.0	3	5	0.199	0.27	0.31	0.45	1	0.0602
Minimum	0.134	2.0	2.2	2	2	0.157	0.22	0.18	0.24	1	0.0000
Maximum	0.230	2.4	4.6	6	11	0.235	0.37	0.53	1.02	2	0.3010



During October, a total of 2,001,900 gallons, which represented a daily average of 133,460 gpd, of treated effluent was discharged to Applebrook, Outfall 002. The discharge to Applebrook was discontinued beginning October 16th. Table 2 represents the final effluent water quality data used to prepare the DMR for outfall 002.

Table 2

September 2014 - Applebrook - Out Fall 002											
NPDES Permit Discharge Limitations	Flow	CBOD₅		TSS		NH₄-N		Phosphorus, Total , mg/L		Fecal Coliform	
	MGD Average	mg/L	lbs/ month	mg/L	lbs/ month	mg/L	lbs/ month	mg/L	lbs/ month	Geo Mean	Geo Mean
	0.75	20	125	21	131	7	44	0.5	3	200	1,000
	Instantaneous Maximum	40		42							
Sample Date											
September 2, 2014	0.1270	2.0	2.1	2	2	0.157	0.17	0.18	0.19	1	0.0000
September 8, 2014	0.1123	2.4	2.2	6	6	0.191	0.18	0.53	0.50	1	0.0000
September 16, 2014	0.1232	2.0	2.1	2	2	0.194	0.20	0.39	0.40	1	0.0000
September 23, 2014	0.1121	2.4	2.2	3	3	0.235	0.22	0.24	0.22	1	0.0000
September 30, 2014	0.1269	2.2	2.3	3	3	0.217	0.23	0.21	0.22	2	0.3010
Average	0.1203	0.0	2.2	3	3	0.199	0.20	0.31	0.31	1	0.0602
Minimum	0.1121	2.0	2.1	2	2	0.157	0.17	0.18	0.19	1	0.0000
Maximum	0.1270	2.4	2.3	6	6	0.235	0.23	0.53	0.50	2	0.3010

Table 3 illustrates the influent wastewater pollutant loadings for September 2014. The influent loadings remained within the treatment facility design loadings.



Table 3

September 2014 - Influent Wastewater											
Design Basis	Flow	BOD ₅		TSS		NH ₄ -N		TKN, mg/L		Phosphorus, Total, mg/L	
		mg/L	lbs/day	mg/L	lbs/day	mg/L	lbs/day	mg/L	lbs/day	mg/L	lbs/day
	MGD Average	335	2,098	320	2,001	32	200	48	301	9.1	57
Sample Date											
September 2, 2014	0.316	328	863	358	942	38.0	100	49.5	130	8.1	21
September 8, 2014	0.275	191	503	234	616	42.1	111	57.4	151	6.9	18
September 16, 2014	0.285	312	821	266	700	29.3	77	49.1	129	6.5	17
September 23, 2014	0.241	228	600	286	753	35.3	93	70.5	186	5.7	15
September 30, 2014	0.293	288	758	136	358	40.4	106	45.6	120	5.0	13
Average	0.282	269	697	256	753	37.0	95	54.4	149	6.4	18
Minimum	0.241	191	503	136	616	29.3	77	45.6	129	5.0	15
Maximum	0.316	328	863	358	942	42.1	111	70.5	186	8.1	21

Table 4 presents the available Outfall 001 final effluent data for the month of October 2014. There are no anticipated exceedances of the permitted limitations for the month of October. Split sampling of the composite sample collected by Applied Laboratory Services (ALS) is ongoing for comparative analysis and daily results.

Table 4

October 2014 - Final Effluent - Out Fall 001											
NPDES Permit Discharge Limitations	Flow	CBOD ₅		TSS		NH ₄ -N		Phosphorus, Total, mg/L		Fecal Coliform	
		mg/L	lbs/month	mg/L	lbs/month	mg/L	lbs/month	mg/L	lbs/month	Geo Mean	Geo Mean
	MGD Average	20	125	21	131	7	44	0.5	3	200	1,000
	Instantaneous Maximum	40		42							
Sample Date											
October 7, 2014	0.144	2.8	3.4	5	6	0.227	0.27	0.21	0.25	1	0.0000
October 14, 2014	0.152	3.1	3.9	4	5	0.116	0.15	0.18	0.23	1	0.0000
October 21, 2014	0.262	2.0	4.4	3	7	0.100	0.22	0.24	0.52	1	0.0000
October 28, 2014	0.257						0.00	0.21	0.45	1	0.0000
Average	0.204	2.6	3.9	4	6	0.148	0.16	0.21	0.36	1	0.0000
Minimum	0.144	2.0	3.4	3	5	0.100	0.00	0.18	0.23	1	0.0000
Maximum	0.262	3.1	4.4	5	7	0.227	0.27	0.24	0.52	1	0.0000



During October 2014, treated effluent was discharged to Applebrook continuously. The data is presented in Table 5.

Table 5

September 2014 - Applebrook - Out Fall 002											
NPDES Permit Discharge Limitations	Flow	CBOD ₅		TSS		NH ₄ -N		Phosphorus, Total , mg/L		Fecal Coliform	
	MGD Average	mg/L	lbs/ month	mg/L	lbs/ month	mg/L	lbs/ month	mg/L	lbs/ month	Geo Mean	Geo Mean
	0.75	20	125	21	131	7	44	0.5	3	200	1,000
	Instantaneous Maximum	40		42							
Sample Date											
October 7, 2014	0.1308	2.8	3.1	5	5	0.227	0.25	0.21	0.23	1	0.0000
October 14, 2014	0.1208	3.1	3.1	4	4	0.116	0.12	0.18	0.18	1	0.0000
October 21, 2014	0.0000										
October 28, 2014	0.0000										
Average	0.0629	0.0	3.1	5	5	0.172	0.18	0.20	0.21	1	0.0000
Minimum	0.0000	2.8	3.1	4	4	0.116	0.12	0.18	0.18	1	0.0000
Maximum	0.1308	3.1	3.1	5	5	0.227	0.25	0.21	0.23	1	0.0000

The influent wastewater pollutant concentrations and loading entering the wastewater treatment facility remained within the design concentrations and loadings. Composite samples are collected at the influent doghouse manhole and influent wet well. The influent flow meter reading is collected from the influent flow meter located prior to the Screening Building, excluding the internal recycle flows.

Table 6 presents the available pollutant data for the influent wastewater collected at the doghouse manhole during October.



Table 6

October 2014 - Influent Wastewater											
Design Basis	Flow	BOD ₅		TSS		NH ₄ -N		TKN, mg/L		Phosphorus, Total, mg/L	
		mg/L	lbs/day	mg/L	lbs/day	mg/L	lbs/day	mg/L	lbs/day	mg/L	lbs/day
	MGD Average	335	2,098	320	2,001	32	200	48	301	9.1	57
Sample Date											
October 7, 2014	0.281	265	621	262	614	39.7	93	58.8	138	8.2	19
October 14, 2014	0.297	156	366	169	396	36.5	86	51.4	120	5.4	13
October 21, 2014	0.334	324	759	329	771	45.0	105	54.2	127	5.7	13
October 28, 2014	0.308										
Average	0.305	248	582	253	594	40.4	95	54.8	128	6.4	15
Minimum	0.281	156	366	169	396	36.5	86	51.4	120	5.4	13
Maximum	0.334	324	759	329	771	45.0	105	58.8	138	8.2	19

Sequencing batch reactors (SBRs) numbered 1, 3 and 4 were in service during August and October.

Process monitoring of each SBR included ammonia as N, nitrite as N, Nitrate as N, COD, SSV, MLSS and total phosphorus. Foam concentrations decreased slightly during September to as low as 40% coverage of the surface area. Increased sludge wasting rates were maintained to manage the MLSS concentrations and F:M ratio within the desired goals.

Daily monitoring of the influent and final effluent 24-hour composites samples for total phosphorus is ongoing. Daily analysis of the final effluent flow equalization grab sample is total phosphorus is ongoing. Sample collection and analysis of the influent wastewater collected at the influent pump station wet well is ongoing.

Addition of aluminum sulfate solution to the SBRs to assist with phosphorus removal continued. The volume of aluminum sulfate solution to the SBRs was decreased for a daily average of 70.5 gpd during October to assist with total phosphorus removal. The aluminum sulfate dosages prior to filtration remained



constant during October. During October, the soda ash addition average increased slightly to approximately 419 lbs./day, as compared to 435 lbs./day during September. Soda ash assists towards maintaining pH concentrations above 7.0 standard units continued during the month.

SBR No. 2 remains out of service as a treatment unit, however, partially filled with MLSS which continuously mixed and aerated. During October, SBR 2 content were transferred to the sludge holding tanks for processing. Cleaning of the SBR is scheduled for November 5th.

Flow data:

October 2014			
Flow Meter Location	Total Volume for Month, MGD	Average Daily Flow, gpd	Daily Maximum Flow, gpd
Influent Wastewater to Screening Building*	10.700	345,169	455,820
Influent Wastewater to SBRs	11.677	376,685	474,112
Internal Recycle	0.977	31,515	110,162
Treated Effluent to Disc Filters	11.499	370,930	342,162
Final Effluent Discharge	7.223	233,000	429,504
Applebrook Golf Course	2.002	133,460	272,088

*The final effluent flow meter data represents 27 days of flow measurements. The flow meter was repaired on September 9, 2014

Chemical Usage:

October 2014		
Chemical	Daily Average	Total Monthly
Soda Ash	419	12,650
Magnesium Hydroxide	0	0
Aluminum Sulfate solution	70.5	2,185
Polymer (centrifuge)	NA	NA

*Nineteen (19) days of centrifuge operation



Solids Dewatering and Disposal: October 2014

Sludge Dewatering Summary	
Gallons of sludge dewatered	318,503
Average Dewatered Total Solids, %	<i>Laboratory results are not available at this time</i>
Wet Tons	<i>Data is not available at this time</i>
Dry Tons	<i>Laboratory results are not available at this time</i>
Number of dumpsters	4

Solids Dewatering and Disposal: September 2014

Sludge Dewatering Summary	
Gallons of sludge dewatered	330,129
Average Dewatered Total Solids, %	21.2%
Wet Tons	39.88
Dry Tons	8.424
Number of dumpsters	5

During October, sludge wasting to the sludge holding tanks and decanting of the sludge holding tanks was ongoing. Process monitoring included pH, total alkalinity and total solids.

Sludge holding tank No. 1 was in service. The level at the beginning of the month was 8.73 feet and the level at the end of the month was 8.00 feet. . The average pH concentration was 6.62 S.U. Zero gallons of supernatant were decanted during the month. A total of 600 pounds of soda ash were added during the month for pH adjustment.

Sludge holding tank No. 2 was in service. The level at the beginning of the month was 4.77 feet and the level at the end was 6.92. The average pH concentration was 6.47 S.U. Zero gallons of supernatant were decanted during the month. A total of 900 pounds of soda ash were added during the month for pH adjustment.

Significant Storm/Hydraulic Loading Events

There were no significant storm events during the month of September and October.



Minor Repairs and Preventative Maintenance

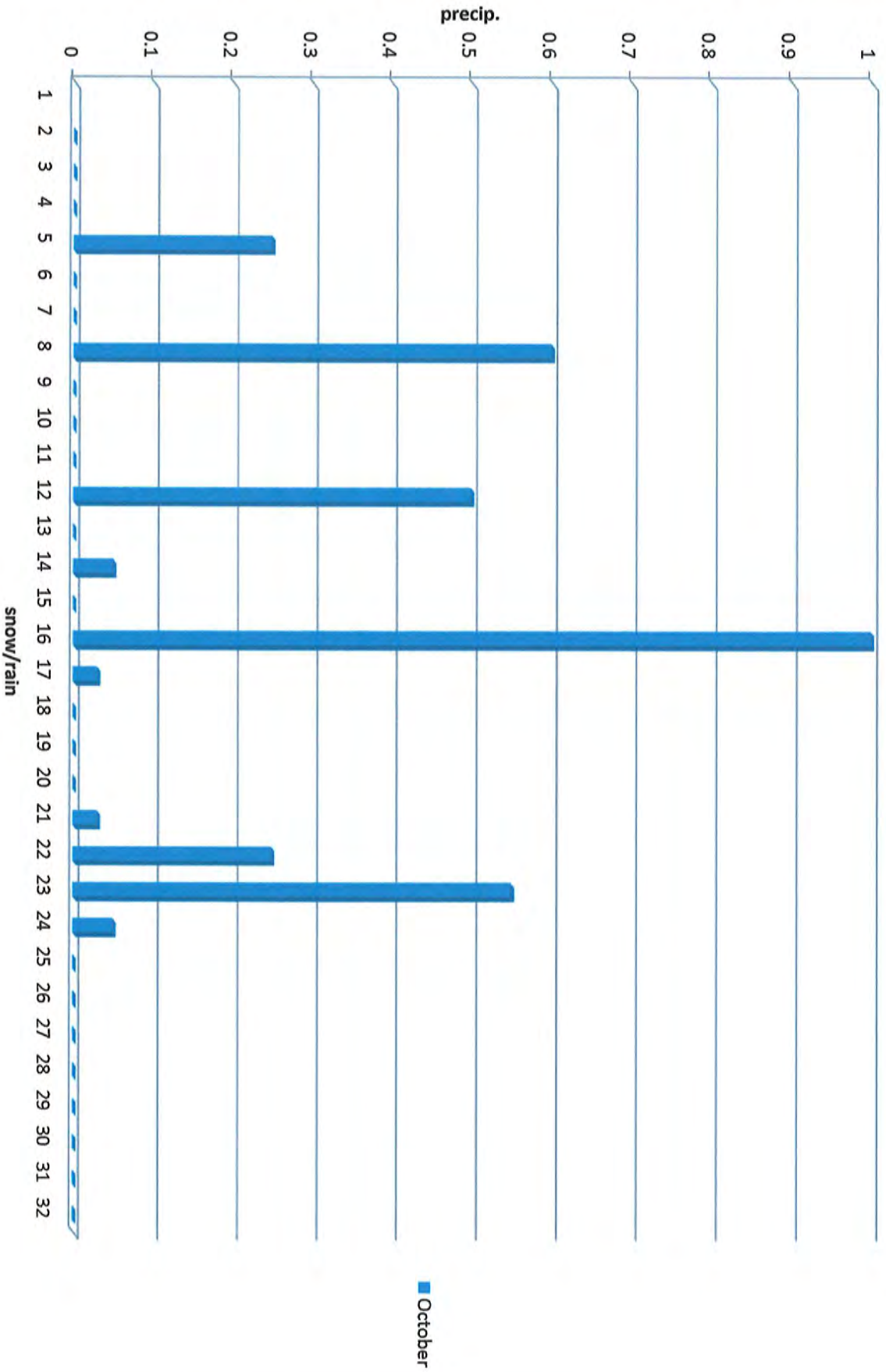
- ACS replaced a failed level transducer for the influent fine screen.

2014 SUMMARY OF METER READINGS

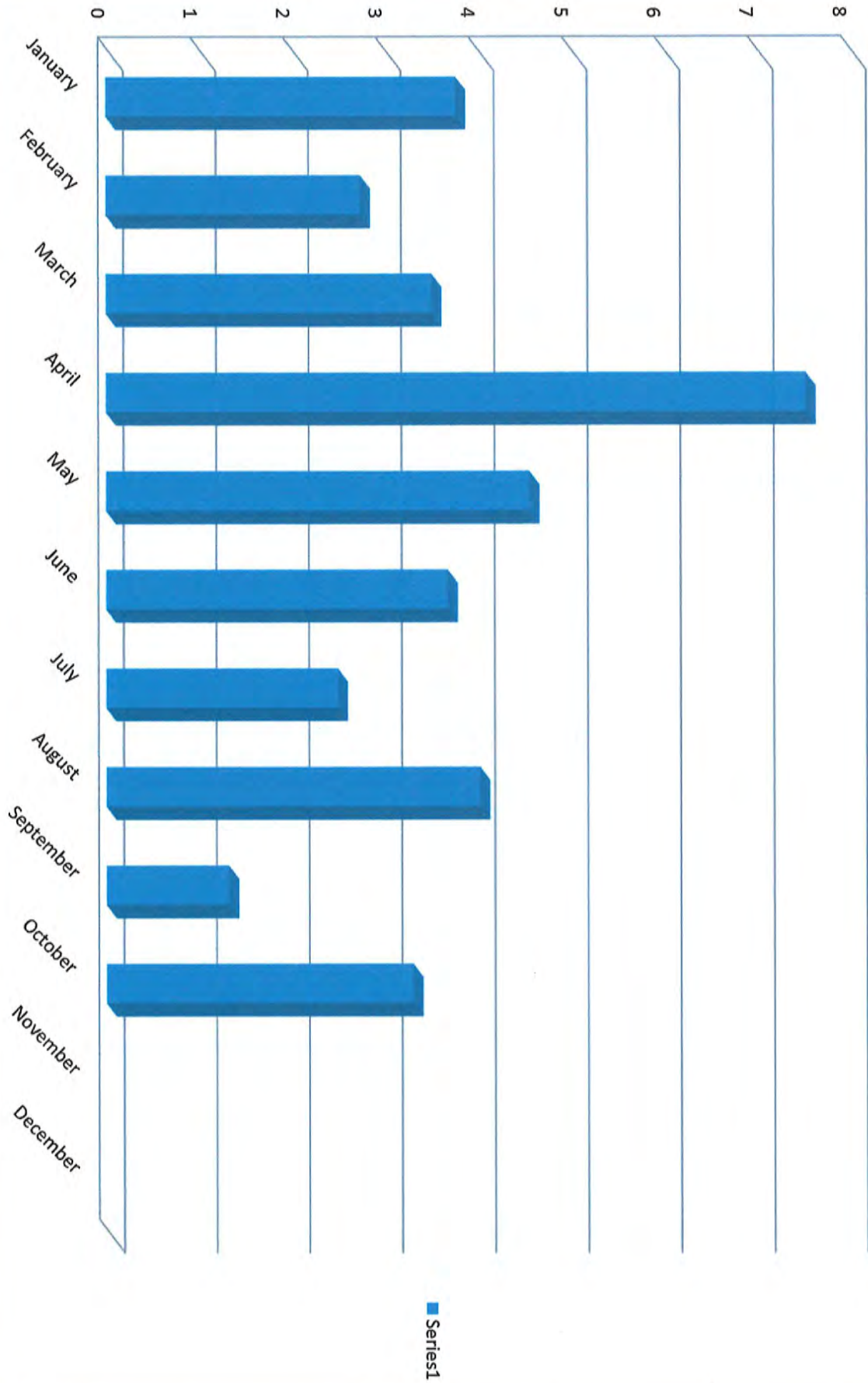
	WESTTOWN WAY	ELLIS LANE	PAOLI PIKE	WILSON DRIVE	SUMMIT	HERSHEY MILL	ASHBRIDGE	HICKS	RESERVOIR	BARKWAY
JANUARY	1,120,955	112,631	63,436	80,890	24,000			255,116	795,376	
FEBRUARY	1,249,173	138,449	68,472	88,803	24,000			287,831	881,433	
MARCH	1,182,533	126,933	67,479	84,197	24,000	860,074	75,186	291,520	827,109	28,696
APRIL	1,242,798	143,329	76,736	88,674	24,000	1,029,229	79,139	300,256	806,253	12,331
MAY	1,542,161	175,112	95,766	94,501	24,000	1,337,536	117,391	357,808	937,139	20,786
JUNE	1,117,632	118,019	66,596	96,366	24,000	718,059	68,339	287,327	744,579	11,081
JULY	965,691	100,935	55,946	86,968	24,000	613,087	57,604	261,340	676,846	9,610
AUGUST	901,782	84,377	54,933	67,878	24,000	546,913	54,394	242,828	616,910	9,213
SEPTEMBER	948,410	82,233	63,005	69,743	24,000	528,956	53,424	183,533	443,679	17,998
OCTOBER	914,111	77,792	61,149	76,199	24,000	519,162	56,103	263,386	608,616	9,877
NOVEMBER										
DECEMBER										
Total Flows										
Monthly Ave	1,118,525	115,981	67,352	83,422	24,000	769,127	70,198	273,095	733,794	14,949

To
West Goshen 851,770

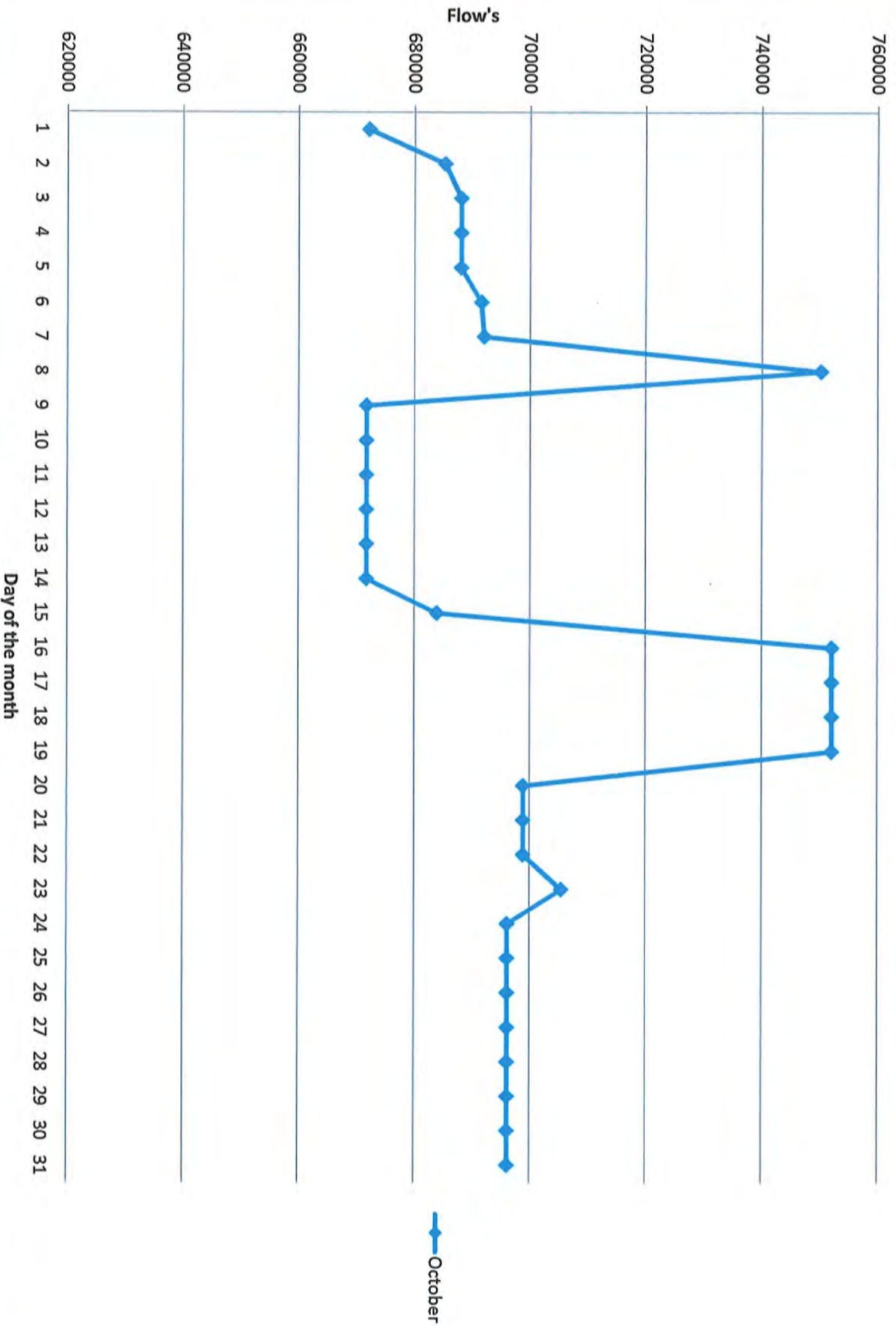
October Precip. 3.31 - 2014



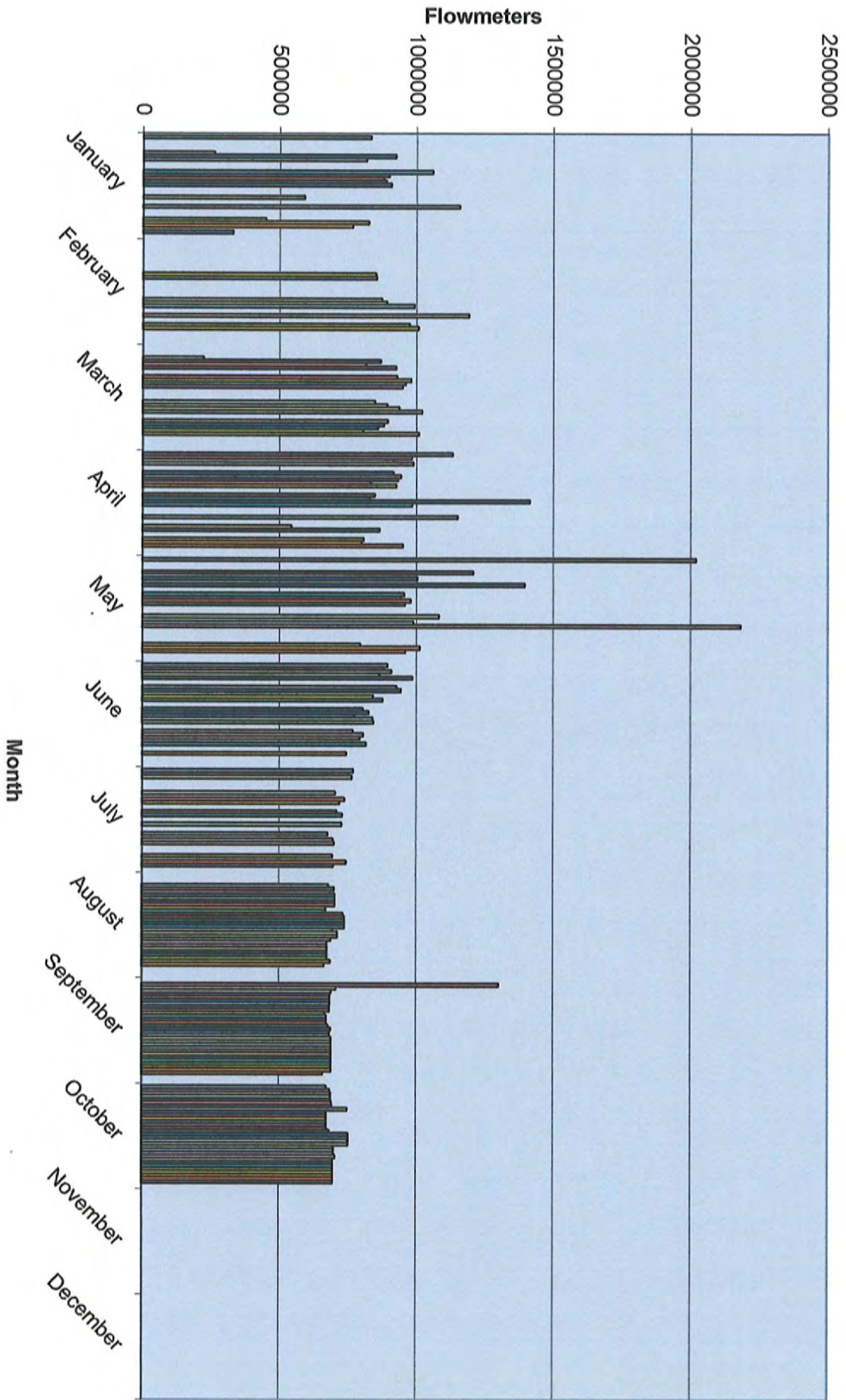
2014 Monthly Precipitation



Flowmeters October 2014



Monthly Totals 2012 Jan-Dec



1 draft
2 EAST GOSHEN TOWNSHIP MUNICIPAL AUTHORITY
3 MEETING MINUTES
4 October 13, 2014
5

6 The East Goshen Township Municipal Authority held their regular public meeting on Monday,
7 October 13, 2014 at 7:00 pm at the East Goshen Township building. Members in attendance
8 were: Chairman Jack Yahraes, Kevin Cummings, Dana Pizarro, Ed McAssey and Fran Beck.
9 Also in attendance were: Rick Smith (Township Manager), Mark Miller (Director of Public
10 Works), Patrick McKenna (Attorney), Carmen Battavio (Supervisor), Janet Emmanuel
11 (Supervisor), Scott Towler (Big Fish) and Mike Ellis (Pennoni). Special guests: Bob and Judy
12 Adams. Past members present were: Michael Steinberger, Joe Kahn and Dick Beidleman.
13

14 **COMMON ACRONYMS:**

15 <i>BFES – Big Fish Environmental Services</i>	<i>MA- Municipal Authority</i>
16 <i>BOS – Board of Supervisors</i>	<i>NPDES – National Pollutant Discharge Elimination System</i>
17 <i>CB – Conservancy Board</i>	<i>PC – Planning Commission</i>
18 <i>DEP – Department of Environmental Protection</i>	<i>PM – Prevention Maintenance</i>
19 <i>EPA – Environmental protection Agency</i>	<i>PR – Park & Recreation Board</i>
20 <i>HC – Historical Commission</i>	<i>RCSTP – Ridley Creek Sewer Treatment Plant</i>
21 <i>I&I – Inflow & Infiltration</i>	<i>SBR – Sequencing Batch Reactor</i>
22 <i>LCSTP – Lockwood Chase Sewer Treatment Plant</i>	<i>SSO – Sanitary System Overflow</i>
23	<i>WAS – Waste Activated Sludge</i>
24	

25 **Call to Order & Pledge of Allegiance**

26 Jack called the meeting to order at 7:00 pm and led those present in the Pledge of Allegiance.
27 There was a moment of silence to remember the troops and all veterans. Jack asked if anyone
28 would be recording the meeting and there was no response.
29

30 **Special Farewell**

31 Bob Adams has retired after 40+ years as attorney to the Municipal Authority. Jack thanked him
32 for his many years of service and presented him with a framed copy of the Blacksmith Shop,
33 which is the Township's logo, with signatures on the back of many of the people who were
34 involved with the Municipal Authority. Bob recalled some of the things he was involved with –
35 the original agreement with West Goshen, building of the sewer plant, East Goshen's expansion
36 of the plant and closing of substations to mention a few. He thanked everyone for the thoughtful
37 gift.
38

39 **Chairman's Report/Other Members' Reports**

40 Jack commented that Ed wrote a good article for the newsletter.
41 Jack reported that Bob White's wife thanked East Goshen for mentioning him in our newsletter.
42 He was a West Goshen supervisor for a long time and died as a result of an accident.
43

44 **Sewer Reports**

45 **1. Director of Public Works**

46 Mark Miller reported for September 2014:

1 Meters: All meters were read on a daily basis. We were having problems with the
2 portable meters reading negative flows. Allied Control was notified and the problems
3 have been corrected.

4 CC Collection: All pump stations were visited on a daily basis, no problems to report.
5 We were notified of a lateral clog on Cooper Circle, the trap was plunged which cleared
6 the clog. We inspected two lateral connections on the system: both were located on
7 Manley Road – one required us to have a public works employee on site since they were
8 digging around the Ashbridge force main. We replaced all the manhole castings on
9 Wilson Drive and Morstein Road as part of our paving program. Three of the castings
10 showed signs of inflow. We televised a thousand feet of sewer line on Reservoir Road,
11 there were no problems to report.

12 RC Collection: The pumping station was visited on a daily basis. We did have a
13 problem at the Hershey Mill Pump Station when a circuit board shorted out. We had a
14 spare board in stock which was changed out and the station was returned to normal
15 operation. We inspected two lateral installations on Cornwallis Drive. The sewer right-
16 of-ways were mowed.

17 RC Plant: No problems to report.

18 Lateral Repairs: 404 Barker Drive replaced clean-out and traps.

19 903 Fairway found trap and clean-out filled with insulation and foam

20 201 Lockwood Lane, new caps.

21 We also repaired a dozen clean-out pipes on both collection systems.

22 Alarms: We responded to 18 alarms for the month of August.

23 PA One Calls: We received 89 PA One calls in August.

24 Mark added that 2 new permanent meters will be needed next year and they may use solar. All
25 manholes and pipe sizes are listed and color coded on the sewer maps in the new computer
26 system.

27

28 **2. Pennoni Engineer's Report**

29 Mike Ellis gave the following report:

30 Invoices: Invoices with summaries are provided under separate cover.

31 Reservoir Rd Pump Station Act 537 Plan: The Act 537 Plan Update was submitted to PADEP
32 on August 25, 2014. PADEP has reviewed the Plan Update and they provided two comments
33 which we are in the process of addressing:

34 1. We expect to submit revised Plan Update pages to address a project scheduling
35 comment by Oct. 14.

36 2. The second comment is that U.S. Fish & Wildlife Services (USFWS) approval is
37 required. It is our understanding that Conestoga-Rovers & Associates resubmitted
38 revised plans to USFWS around July 10 to address their bog turtle protection comments
39 at the Chester Creek crossing. We are still awaiting USFWS's formal approval, and we
40 have contacted them again to request a written approval.

41 Tentative Act 537 Planning schedule:

	<u>Estimated Date</u>
42 Submission to PADEP	August 25, 2014
43 Address PADEP Comments	by October 31, 2014
44 PADEP Review and Approval (120 Days)	December 23, 2014

1 Semi-Annual Sewer Status Report

2 We analyzed permanent and portable meter data for the past six-month period. We met
3 with the Township Manager and PW Director to discuss conclusions and recommendations. We
4 also met with the meter service company and PW staff at several portable meter manhole
5 locations to observe meter installations, man hole conditions and calibrations. A semi-annual
6 status memo was forwarded to the Township.

7
8 Sewer Ordinance Updates

9 We prepared proposed revisions to the Building Sewer and Grinder Pump sections of the
10 Township's Sewer Ordinance. We also prepared a new typical building sewer detail. We met
11 with the Township Manager and PW Director to review the proposed revisions. A second set of
12 ordinance revisions was made thereafter and was forwarded to the Township for review, along
13 with an example grinder pump operations and maintenance agreement.

14 New Sewer Connections

15 We received a revised grinder pump plan submission for a proposed house at 610
16 Reservoir Road that is scheduled for review.

17
18 **3. Big Fish Environmental Services** – The following is Scott's report for September 2014:

19 Treatment Process Operation - During August 2014, there were no exceedances of the final
20 effluent discharge limitations for outfall 001 and no discharge from Outfall 002. The monthly
21 average total phosphorus concentration was 0.25 mg/L as compared to the discharge limitation of
22 0.5 mg/L.

23 During the month, the final effluent total phosphorus concentration discharged ranged from 0.23
24 mg/L to 0.27 mg/L with an average of 99 gallons per day of aluminum sulfate solution as
25 compared to the 92 gpd for July.

26 A total of 4,028,004 gallons, which represented a daily average of 134,267 gpd of treated
27 effluent was discharged to Applebrook, Outfall 002. The influent loadings remained within the
28 treatment facility design loadings. There are no anticipated exceedances of the permitted
29 limitations for the month of September. Split sampling of the composite sample collected by
30 Applied Laboratory Services (ALS) is ongoing for comparative analysis and daily results.
31 The influent wastewater pollutant concentrations and loading entering the wastewater treatment
32 facility remained within the design concentrations and loadings. Composite samples are collected
33 at the influent doghouse manhole and influent wet well. The influent flow meter reading is
34 collected from the influent flow meter located prior to the Screening Building, excluding the
35 internal recycle flows.

36 Sequencing batch reactors (SBRs) 1, 3 and 4 were in service during the months of August and
37 September.

38 Process monitoring of each SBR included ammonia as N, Nitrite as N, Nitrate as N, COD, SSV,
39 MLSS and total phosphorus. Foam concentrations decreased slightly during September to as low
40 as 40% coverage of the surface area. Increased sludge wasting rates were maintained to manage
41 the MLSS concentrations and F:M ratio within the desired goals. Aeration time remained at a
42 minimum of 230 minutes to provide for a total of approx. 63% of aeration during the 360 minute
43 treatment cycle. The extended aeration period assists to offset the oxygen demand after extended
44 periods of idle time between treatment cycles.

45 Daily monitoring of the influent and final effluent 24-hour composites samples for total
46 phosphorus is ongoing. Daily analysis of the final effluent flow equalization grab sample total

1 phosphorus is ongoing. Sample collection and analysis of the influent wastewater collected at
2 the influent pump station wet well is ongoing. Addition of aluminum sulfate solution to the SBRs
3 was slightly increased from a daily average of 92 gpd during July to 99 gpd during September to
4 assist with total phosphorus removal. The aluminum sulfate dosages prior to filtration remained
5 constant during August and September. The increase in alum addition, as well as the increased
6 idle times, resulted in an increase in soda ash addition. During August the soda ash addition
7 average decreased slightly to approx. 435 lbs/day, as compared to 416 lbs/day during July. Soda
8 ash assists towards maintaining pH concentrations above 7.0 standard units continued during the
9 month.

10 SBR #2 remains out of service as a treatment unit, however, partially filled with MLSS which
11 continuously mixed and aerated.

12 Solids Dewatering and Disposal: September 2014

13 During August, sludge wasting to the sludge holding tanks and decanting of the sludge holding
14 tanks was ongoing. Process monitoring included pH, total alkalinity and total solids.

15 Sludge holding tank #1 was in service. The level at the beginning of the month was 8.19 ft. and
16 the level at the end of the month was 7.93 feet. The initial total solids concentration was .74%
17 and ended the month as .67% total solids. The average pH concentration was 7.40 S.U. and total
18 alkalinity of 285 mg/L. Zero gallons of supernatant were decanted during the month. A total of
19 100 lbs. of soda ash were added during the month for pH adjustment.

20 Sludge holding tank #2 was in service. The level at the beginning of the month was 11.57 ft. and
21 the level at the end was 5.77. The initial total solids concentrations were .69% and ended the
22 month as .68% total solids. The average pH concentration was 7.23 S.U. and total alkalinity of
23 355 mg/L. A total of 55,440 gallons of supernatant were decanted during the month. A total of
24 350 pounds of soda ash were added during the month for pH adjustment.

25 Significant storm/hydraulic Loading Events – None for August 2014.

26 Minor Repairs and Preventive Maintenance

27 ACS replaced a failed level transducer for the final effluent flow meter.

28 Scott added that on a Monday evening about 3 weeks ago when Jim was on duty, 6 young men
29 pulled into the lot. There was no incident, but the gate will be closed at night even when
30 someone is working there.

31
32 Approval of Minutes

33 Fran moved to accept the minutes of September 8, 2014 as corrected. Dana seconded the
34 motion. The motion passed unanimously.

35
36 Approval of Invoices

37 1. Kevin moved to approve payment of the following Pennoni invoices:

- | | | | | |
|----|----|-----------------|----|--------|
| 38 | a. | Pennoni #607606 | \$ | 141.25 |
| 39 | b. | Pennoni #607607 | \$ | 441.25 |
| 40 | c. | Pennoni #607608 | \$ | 649.75 |
| 41 | d. | Pennoni #607609 | \$ | 75.00 |

42 Ed seconded the motion. The motion passed unanimously.

43 2. Kevin moved to approve payment of the Gawthrop invoice #123359 for \$400.00. Fran
44 seconded the motion. The motion passed unanimously.

1
2 **Liaison Reports**

3 Board of Supervisors – Carmen mentioned that they will have a special meeting to review the
4 proposed budget for 2015. The BOS decided that they want a new Comprehensive Plan instead
5 of an update of the current one. Tom Committa was selected to head the new task force.
6

7 **Financial Reports**

8 Jon Altshul provided the following report:

9 The Municipal Authority recorded \$21,730 in revenues (mostly from Tapping Fees from Goshen
10 Meadows) and \$10,306 in expenses in September (mostly from the quarterly administrative
11 chargeback for \$8,043), a difference of +\$11,424. The fund balance is now \$1,607,921.
12

13 **Goals**

14 Complete
15

16 **New Business**

17 **Pulte – Applebrook Preserve** – Rick reported that in April 2013, Pulte dedicated the sewer lines
18 in the Applebrook Preserve to the Authority. At that time, they posted an 18 month maintenance
19 bond. The 18 month period expires this month. Mark televised the sewer lines last fall and
20 everything looked ok. He recently pulled some manholes and did not see any problems. Kevin
21 made a motion to authorize relief of the maintenance bond. Ed seconded the motion. The
22 motion passed unanimously.

23 **2015 Proposed Budget** – The proposed budget for 2015 was reviewed. Dana made a motion to
24 approve and submit the proposed budget for 2015. Fran seconded the motion. The motion
25 passed unanimously.
26
27

28 **Adjournment**

29 There being no further business, Kevin moved to adjourn the meeting. Dana seconded the
30 motion. The motion passed unanimously. The meeting was adjourned at 8:00 pm.
31

32 Respectfully submitted,
33
34

35 Ruth Kiefer
36 Recording Secretary



INVOICE

Newark, DE
302-655-4451 Fax: 302-654-2895

Remit Payment To:
Pennoni Associates Inc.
P.O. Box 827328
Philadelphia, PA 19182-7328

East Goshen Municipal Authority
1580 Paoli Pike
West Chester, PA 19380-6199
Attention: Louis F. Smith, Twp Mgr.

Invoice # : 611142
Invoice Date : 10/17/2014
Project : EGMA1306
Project Name : Reserve PS Diversion Construction

For Services Rendered through: 10/12/2014

FINAL INVOICE

Coordination with contractor and Township Manager regarding final payment and payment reduction for restoration work performed by the Township PW Dept.

Phase : **** -- Professional Services

Total Phase : **** -- Professional Services

Labor : 28.25
Expense : 0.00
Phase Total : 28.25

Amount Due This Invoice

28.25

Fee : 20,000.00
Prior Billings : 16,095.75
Current Billings : 28.25
Total Billings : 16,124.00

Phase : **** -- Professional Services

Labor

Class	Hours/ Units	Rate	Amount
Authority Engineer	0.25	113.00	28.25
Labor Total:	0.25		28.25

Total Phase : **** -- Professional Services

Labor : 28.25
Expense : 0.00

Total Project : EGMA1306 -- Reserve PS Diversion Construction

Labor : 28.25
Expense : 0.00

OK RS 11-7

East Goshen Municipal Authority
EGMA1306 Invoice Summary
Invoice Date 10/17/2014

Project: EGMA1306
Pennoni Job No.: Reserve PS Diversion Construction P
Invoice No: 607606
Invoice Period: 9/15/2014 to 10/12/2014
Initial Authorization: \$ 20,000.00 **Date:** 10/1/2014
Contract Amount: \$ 20,000.00
Previously Invoiced: \$ 16,095.75
Current Invoice: \$ 28.25
Invoiced to Date (\$): \$ 16,124.00
Invoiced to Date (%): 81%
Remaining Budget (\$): \$ 3,876.00
Remaining Budget (%): 19%

Budget by Phase:

Phase Name:	Reserve PS Diversion Construction Phase
Phase Budget:	\$ 20,000.00
Previously Invoiced:	\$ 16,095.75
Current Invoice:	\$ 28.25
Invoiced to Date (\$):	\$ 16,124.00
Invoiced to Date (%):	81%
Remaining Budget (\$):	\$ 3,876.00
Remaining Budget (%):	19%

Comments:

FINAL INVOICE

Coordination with contractor and Township Manager regarding final payment and payment reduction for restoration work performed by the Township PW Dept.



INVOICE

Newark, DE
302-655-4451 Fax: 302-654-2895

Remit Payment To:
Pennoni Associates Inc.
P.O. Box 827328
Philadelphia, PA 19182-7328

East Goshen Municipal Authority
1580 Paoli Pike
West Chester, PA 19380-6199
Attention: Louis F. Smith, Twp Mgr.

Invoice # : 611143
Invoice Date : 10/17/2014
Project : EGMA1307
Project Name : Reservoir Rd PS Act 537 Planning

For Services Rendered through: 10/12/2014

Reviewed and discussed PADEP's comments with Township Manager and PADEP; and initiated revisions to Act 537 Plan to address comments.

Phase : 03 -- Act 537 Plan Update

Total Phase : 03 -- Act 537 Plan Update

Labor :	247.50
Expense :	0.00
Phase Total :	247.50

Amount Due This Invoice

\$247.50

Phase : 03 -- Act 537 Plan Update

Labor

<u>Class</u>	<u>Hours/ Units</u>	<u>Rate</u>	<u>Amount</u>
Authority Engineer	2.25	110.00	247.50
Labor Total:	2.25		247.50

Total Phase : 03 -- Act 537 Plan Update

Labor :	\$247.50
Expense :	\$0.00

Total Project : EGMA1307 -- Reservoir Rd PS Act 537 Planning

Labor :	\$247.50
Expense :	\$0.00

OK R S 11-7

East Goshen Municipal Authority
EGMA1307 Invoice Summary
Invoice Date 10/17/2014

Project:	EGMA1307		
Pennoni Job No.:	Reservoir Rd PS Act 537 Planning		
Invoice No:	607607		
Invoice Period:	9/15/2014	to	10/12/2014
Initial Authorization:	\$ 77,400.00	Date:	10/17/2014
Contract Amount:	\$ 87,900.00		
Previously Invoiced:	\$ 72,716.75		
Current Invoice:	\$ 247.50		
Invoiced to Date (\$):	\$ 72,964.25		
Invoiced to Date (%):	83%		
Remaining Budget (\$):	\$ 14,935.75		
Remaining Budget (%):	17%		

Budget by Phase:

	Reservoir Rd PS Act 537 Planning	
Phase Name:		
Phase Budget:	\$ 87,900.00	
Previously Invoiced:	\$ 72,716.75	
Current Invoice:	\$ 247.50	
Invoiced to Date (\$):	\$ 72,964.25	
Invoiced to Date (%):	83%	
Remaining Budget (\$):	\$ 14,935.75	
Remaining Budget (%):	17%	

Comments: Reviewed and discussed PADEP's comments with Township Manager and PADEP; and initiated revisions to Act 537 Plan to address comments.



INVOICE

Newark, DE
302-655-4451 Fax: 302-654-2895

Remit Payment To:
Pennoni Associates Inc.
P.O. Box 827328
Philadelphia, PA 19182-7328

East Goshen Municipal Authority
1580 Paoli Pike
West Chester, PA 19380-6199
Attention: Louis F. Smith, Twp Mgr.

Invoice # : 611144
Invoice Date : 10/17/2014
Project : EGMA1401
Project Name : 2014 General Services

For Services Rendered through: 10/12/2014

Prepared October's Engineers Report and coordinated 2015 budgeting and project planning with Township Manager.

Phase : **** -- Professional Services

Total Phase : **** -- Professional Services

Labor :	141.25
Expense :	0.00
Phase Total :	141.25

Amount Due This Invoice

\$141.25

Fee :	10,300.00
Prior Billings :	8,448.25
Current Billings :	141.25
Total Billings :	8,589.50

Phase : **** -- Professional Services

Labor

Class	Hours/ Units	Rate	Amount
Authority Engineer	1.25	113.00	141.25
Labor Total:	1.25		141.25

Total Phase : **** -- Professional Services

Labor :	\$141.25
Expense :	\$0.00

Total Project : EGMA1401 -- 2014 General Services

Labor :	\$141.25
Expense :	\$0.00

OIC RS 11-7

East Goshen Municipal Authority
EGMA1401 Invoice Summary
Invoice Date 10/17/2014

Project:	EGMA1401		
Pennoni Job No.:	2014 General Services		
Invoice No:	607608		
Invoice Period:	9/15/2014	to	10/12/2014
Initial Authorization:	\$ 10,300.00	Date:	10/17/2014
Contract Amount:	\$ 10,300.00		
Previously Invoiced:	\$ 8,448.25		
Current Invoice:	\$ 141.25		
Invoiced to Date (\$):	\$ 8,589.50		
Invoiced to Date (%):	83%		
Remaining Budget (\$):	\$ 1,710.50		
Remaining Budget (%):	17%		

Budget by Phase:

Phase Name:	2014 General Services
Phase Budget:	\$ 10,300.00
Previously Invoiced:	\$ 8,448.25
Current Invoice:	\$ 141.25
Invoiced to Date (\$):	\$ 8,589.50
Invoiced to Date (%):	83%
Remaining Budget (\$):	\$ 1,710.50
Remaining Budget (%):	17%

Comments: Prepared October's Engineers Report and coordinated 2015 budgeting and project planning with Township Manager.



INVOICE

Newark, DE
302-655-4451 Fax: 302-654-2895

Remit Payment To:
Pennoni Associates Inc.
P.O. Box 827328
Philadelphia, PA 19182-7328

East Goshen Municipal Authority
1580 Paoli Pike
West Chester, PA 19380-6199
Attention: Louis F. Smith, Twp Mgr.

Invoice # : 611145
Invoice Date : 10/17/2014
Project : EGMA1402
Project Name : 2014 Semi-Annual I&I Reports

For Services Rendered through: 10/12/2014

Analyzed portable meter data from April-September 2014; initiated preparation of full semi-annual sewer system status report; attended meeting with Township Manager and PW Director to discuss metering analysis, conclusions, and recommendations; performed field recon with meter contractor and PW Dept. staff to several portable meter locations that are providing questionable data; and prepared and issued brief semi-annual sewer system status summary memo.

Phase : **** -- Professional Services

Total Phase : **** -- Professional Services

Labor : 3,856.00
Expense : 0.00
Phase Total : 3,856.00

Amount Due This Invoice

3,856.00

Fee : 10,300.00
Prior Billings : 5,903.50
Current Billings : 3,856.00
Total Billings : 9,759.50

Phase : **** -- Professional Services

Labor Class	Hours/ Units	Rate	Amount
Authority Engineer	5.75	113.00	649.75
Graduate Engineer	42.75	75.00	3,206.25
Labor Total:	48.50		3,856.00

Total Phase : **** -- Professional Services

Labor : 3,856.00
Expense : 0.00

Total Project : EGMA1402 – 2014 Semi-Annual I&I Reports

Labor : 3,856.00
Expense : 0.00

OK RS 11-7

East Goshen Municipal Authority
EGMA1402 Invoice Summary
Invoice Date 10/17/2014

Project:	EGMA1402		
Pennoni Job No.:	2014 Semi-Annual I&I Reports		
Invoice No:	591752		
Invoice Period:	9/15/2014	to	10/12/2014
Initial Authorization:	\$ 10,300.00	Date:	10/17/2014
Contract Amount:	\$ 10,300.00		
Previously Invoiced:	\$ 5,903.50		
Current Invoice:	\$ 3,856.00		
Invoiced to Date (\$):	\$ 9,759.50		
Invoiced to Date (%):	95%		
Remaining Budget (\$):	\$ 540.50		
Remaining Budget (%):	5%		

Budget by Phase:

	2014 Semi-Annual I&I Reports	
Phase Name:		
Phase Budget:	\$ 10,300.00	
Previously Invoiced:	\$ 5,903.50	
Current Invoice:	\$ 3,856.00	
Invoiced to Date (\$):	\$ 9,759.50	
Invoiced to Date (%):	95%	
Remaining Budget (\$):	\$ 540.50	
Remaining Budget (%):	5%	

Comments: Analyzed portable meter data from April-September 2014; initiated preparation of full semi-annual sewer system status report; attended meeting with Township Manager and PW Director to discuss metering analysis, conclusions, and recommendations; performed field recon with meter contractor and PW Dept. staff to several portable meter locations that are providing questionable data; and prepared and issued brief semi-annual sewer system status summary memo.



Gawthrop Greenwood, PC
Attorneys at Law

17 East Gay Street, Suite 100 | (p) 610-696-8225
West Chester, PA 19381-0562 | (f) 610-344-0922
gglaw@gawthrop.com | www.gawthrop.com

East Goshen Municipal Authority
1580 Paoli Pike
West Chester PA 19380

Page: 1
09/30/2014
Client No: 6604-001M
Invoice No. 124666

General Authority Services

Fees

		Hours	
09/04/2014	PMM Email to R. Smith.	0.20	
09/08/2014	PMM Review and analyze meeting packet in preparation for authority meeting; Attend authority meeting.	1.20	
	For Current Services Rendered	1.40	280.00

Recapitulation

<u>Timekeeper</u>	<u>Hours</u>	<u>Hourly Rate</u>	<u>Total</u>
Patrick M. McKenna	1.40	\$200.00	\$280.00
Previous Balance			\$400.00
Total Current Charges			280.00
09/24/2014	Payment		-400.00
Balance Due			<u>\$280.00</u>

OK TO PAY
RS 10-22-14

To ensure proper credit, please write client number on your check when returning payment. Thank You.
A finance charge of 1.25% per month (15% annually) may be charged on balances not paid 60 days after the invoice date.

PAID
RS



Gawthrop Greenwood, PC
Attorneys at Law

17 East Gay Street, Suite 100 | (p) 610-696-8225
West Chester, PA 19381-0562 | (f) 610-344-0922
gglaw@gawthrop.com | www.gawthrop.com

East Goshen Municipal Authority
1580 Paoli Pike
West Chester PA 19380

Page: 1
10/31/2014
Client No: 6604-001M
Invoice No. 125139

General Authority Services

Fees

		Hours		
10/08/2014	PMM	Review and analyze meeting minutes from July agenda and supporting documents; review and analyze proposed budget; emails to/from W Martin regarding executive session.	0.80	
10/13/2014	PMM	Review and analyze meeting packet in preparation for Authority meeting; Attend authority meeting.	1.90	
		For Current Services Rendered	2.70	<u>540.00</u>
		Recapitulation		
<u>Timekeeper</u>		<u>Hours</u>	<u>Hourly Rate</u>	<u>Total</u>
Patrick M. McKenna		2.70	\$200.00	\$540.00
		Previous Balance		\$280.00
		Total Current Charges		540.00
11/03/2014		Payment		-280.00
		Balance Due		<u>\$540.00</u>

ok R S 11-7

To ensure proper credit, please write client number on your check when returning payment. Thank You.
A finance charge of 1.25% per month (15% annually) may be charged on balances not paid 60 days after the invoice date.

Memo

To: Municipal Authority
From: Jon Altshul
Re: MA October Financial Reports
Date: November 4, 2014

The Municipal Authority recorded \$2,134 in revenues, including one tap-in fee, and \$4,252 in expenses in October, a difference of -\$2,118. The fund balance is now \$1,605,803.

A complete list of all year-to-date expenses and revenues is provided.

EAST GOSHEN TOWNSHIP
 1580 PAOLI PIKE
 WEST CHESTER, PA
 Municipal Authority
 October 2014

Account Title	Acct #	Annual Budget	Month To Date Actual	Year To Date Actual
MUNICIPAL AUTHORITY BEGINNING FUND BALANCE				
RCSTP BUDGET				
REVENUE				
INTEREST EARNED - RCSTP EXPANSION	07341 1020	2,000.00	132.20	1,317.38
GRANT REVENUE	07392 0800	0.00	0.00	0.00
TOTAL REVENUE		2,000.00	132.20	1,317.38
EXPENSES				
R.C.-CAP. PROJ.-ENGINEER	07424 7451	0.00	0.00	0.00
R.C. CAP EXPANSION GEN'L CONTRACTOR	07424 7452	0.00	0.00	0.00
R.C. CAP EXPANSION - ELECTRICAL	07424 7453	0.00	0.00	0.00
R.C. CAP EXP CONTINGENCY CAPITAL	07424 7454	0.00	0.00	0.00
R.C. CAP EXP CONTINGENCY ONGOING	07424 7455	0.00	0.00	0.00
R.C. CAP EXP ADDITIONAL CONTINGENCY	07424 7456	0.00	0.00	0.00
TRANSFER TO SEWER SINKING FUND	07492 0550	0.00	0.00	0.00
TRANSFER TO AUTHORITY CAP FUND	07492 0990	0.00	0.00	0.00
TOTAL EXPENSES		0.00	0.00	0.00
RCSTP NET RESULT		2,000.00	132.20	1,317.38

1,607,921.17

EAST GOSHEN TOWNSHIP
1580 PAOLI PIKE
WEST CHESTER, PA
Municipal Authority
October 2014

Account Title	Acct #	Annual Budget	Month To Date Actual	Year To Date Actual
OPERATING BUDGET				
REVENUE				
INTEREST EARNINGS	07341 1000	27.00	2.16	12.90
C.C. TAPPING FEES	07364 1100	124,000.00	0.00	88,600.00
R.C.TAPPING FEES	07364 1110	21,444.00	2,000.00	12,288.80
CONNECTION FEES - SEWER	07364 1130	0.00	0.00	1,127.52
MISCELLANEOUS REVENUE	07380 1000	0.00	0.00	564.48
TRANSFER FROM SEWER OPERATING	07392 0500	0.00	0.00	21,000.00
TOTAL REVENUE		145,471.00	2,002.16	123,593.70
EXPENSES				
ADMINISTRATIVE WAGES	07424 1400	32,768.00	0.00	24,129.06
MISCELLANEOUS EXPENSE	07424 3000	4,000.00	0.00	1,450.00
MUNIC.AUTH--AUDITING	07424 3110	10,800.00	0.00	10,800.00
ENGINEERING SERVICES	07424 3130	35,525.00	724.75	28,261.75
LEGAL-SERVICES	07424 3140	7,000.00	280.00	6,520.00
M.C.-DVRFA-DEBT SERVICE	07471 1000	22,120.00	0.00	0.00
M.C.-DVRFA-INTEREST PAYMN	07472 1000	5,115.00	0.00	0.00
M.C.-DVRFA-INTEREST PAYMN	07472 1010	0.00	0.00	0.00
TOTAL EXPENSES		117,328.00	1,004.75	71,160.81
OPERATING NET RESULT		28,143.00	997.41	52,432.89

EAST GOSHEN TOWNSHIP
 1580 PAOLI PIKE
 WEST CHESTER, PA
 Municipal Authority
 October 2014

Account Title	Acct #	Annual Budget	Month To Date		Year To Date	
			Actual		Actual	
CAPITAL BUDGET						
REVENUE						
LOAN PROCEEDS-SEWER PROJECT	07393 1001	0.00	0.00	0.00	0.00	0.00
TRANSFER FROM SEWER CAP RESERVE	07392 0900	0.00	0.00	0.00	0.00	0.00
TOTAL REVENUE		0.00	0.00	0.00	0.00	0.00
EXPENSES						
MARYDELL PUMP STATION - ENGINEER	07425 1000	0.00	0.00	0.00	0.00	0.00
MARYDELL PUMP STATION - CONSTRUCTION	07425 2000	0.00	0.00	0.00	0.00	0.00
MANHOLE COVER REPLACEMENTS	07424.7405	0.00	0.00	0.00	0.00	0.00
C.C. CAPITAL - COLLECTION	07424.7420	0.00	0.00	0.00	0.00	0.00
LOCHWOOD ABANDONMENT ENGINEER	07424 7475	0.00	0.00	0.00	0.00	0.00
LOCHWOOD ABANDONMENT CONSTRUCTION	07424 7476	0.00	0.00	0.00	0.00	0.00
LOCHWOOD ELIMINATION PHASE 2	07424 7477	0.00	0.00	0.00	0.00	0.00
HERSHEY MILL STATION - ENGINEER	07426 1000	0.00	0.00	0.00	0.00	0.00
HERSHEY MILL STATION - CONSTRUCTION	07426 2000	0.00	0.00	0.00	0.00	0.00
RESERVE PUMP STATION - ENGINEER	07427 1000	0.00	(3,517.16)	1,855.25	1,855.25	1,855.25
RESERVE PUMP STATION - CONSTRUCTION	07427 2000	0.00	6,323.20	6,323.20	6,323.20	6,323.20
RESERVOIR PUMP STATION - ENGINEER	07428 1000	75,000.00	441.25	38,038.75	38,038.75	38,038.75
RESERVOIR PUMP STATION CONSTRUCTION	07428 2000	0.00	0.00	0.00	0.00	0.00
TOTAL EXPENSES		75,000.00	3,247.29	46,217.20	46,217.20	46,217.20
CAPITAL NET RESULT		(75,000.00)	(3,247.29)	(46,217.20)	(46,217.20)	(46,217.20)
MUNICIPAL AUTHORITY ENDING FUND BALANCE			1,605,803.49			

MGRP18 run by BRIAN 2 : 07 PM

Acct #	Per	Src	Trx #	Debits	Credits	Beg/End Bal	Date	Check/Ref #	ID #	Name/Description
07341-1020	1402	JE	41392		123.56		03/04/14	INTEREST		INTEREST EARNED FEBRUARY 2014 07 CONSTRUCTION FUND
				0.00	123.56	-260.89				
1403			41841		136.07		04/01/14	INTEREST		INTEREST EARNED MARCH 2014 07 CONSTRUCTION FUND
				0.00	136.07	-396.96				
1404			42322		131.45		05/02/14	INTEREST		INTEREST EARNED APRIL 2014 CONSTRUCT. FUNDS
				0.00	131.45	-528.41				
1405			42740		134.59		06/02/14	INTEREST		INTEREST EARNED MAY 2014 07 FUND - CONSTRUCTION
				0.00	134.59	-663.00				
1406			43212		129.00		07/01/14	INTEREST		INTEREST EARNED JUNE 2014 07 CONSTRUCTION FUNDS
				0.00	129.00	-792.00				
1407			43718		132.61		08/04/14	INTEREST		INTEREST EARNED JULY 2014 07 CONTRUC. FUND
				0.00	132.61	-924.61				
1408			44103		132.27		09/03/14	INTEREST		INTEREST EARNED AUGUST 2014 07 CONSTRUCTION FUND
				0.00	132.27	-1,056.88				
1409			44522		128.30		10/01/14	INTEREST		INTEREST EARNED SEPTEMBER 2014 07 CONSTRUCTION FUND
				0.00	128.30	-1,185.18				
1410			45014		132.20		11/03/14	INTEREST		INTEREST EARNED OCTOBER 2014 07 CONSTRUCTION FUND
				0.00	132.20	-1,317.38				
				0.00	1,317.38	-1,317.38				
07364-1100	C.C.	TAPPING FEES				0.00				
1401	CR	40976			12,600.00		01/31/14	3034	8069	1 GOSHEN MEADOWS INVESTORS L.P.
				0.00	12,600.00	-12,600.00				
1402		41258			5,400.00		02/24/14	3553	8069	1 GOSHEN MEADOWS INVESTORS L.P.
	RE	41263			2,000.00		02/24/14	41263 1		TAP IN FEE - 211 ELLIS LANE
				0.00	7,400.00	-20,000.00				
1405		42661			2,000.00		05/29/14	42661 1		TAP IN FEE FOR 195 WILLPEN PL
				0.00	2,000.00	-22,000.00				

MGRP18 run by BRIAN 2 : 07 PM

Acct #	Per	Src	Trx #	Debits	Credits	Beg/End Bal	Date	Check/Ref #	ID #	Name/Description
07364-1100	1407	CR	43276		21,600.00		07/03/14	21	8069	1 GOSHEN MEADOWS INVESTORS L.P.
			43434		21,600.00		07/21/14	26	8069	1 GOSHEN MEADOWS INVESTORS L.P.
		RE	43312	1,800.00			07/08/14	43312 1		TAP IN FEE FOR 1637 MANLEY RD
				0.00	45,000.00	-67,000.00				
1409	CR	44456			21,600.00		09/26/14	46	8069	1 GOSHEN MEADOWS INVESTORS L.P.
				0.00	21,600.00	-88,600.00				
				0.00	88,600.00	-88,600.00				
07364-1110	R.C.TAPPING FEES					0.00				
1402	RE	41280			2,000.00		02/25/14	41280 1		TAP IN FEE-903 SORELL HILL LT2
				0.00	2,000.00	-2,000.00				
1403		41553			2,000.00		03/13/14	41553 1		TAP IN FEE FOR 909 SORRELL LT4
		41608			2,000.00		03/17/14	41608 1		TAP IN FEE-905 SORRELL LOT 3
				0.00	4,000.00	-6,000.00				
1405	CR	42355			4,288.80		05/06/14	130	6499	1 BOWER, JUDITH
				0.00	4,288.80	-10,288.80				
1410	RE	44714			2,000.00		10/15/14	44714 1		TAP IN FEE FOR 1117 TAYLOR AVE
				0.00	2,000.00	-12,288.80				
				0.00	12,288.80	-12,288.80				
07364-1130	CONNECTION FEES - SEWER					0.00				
1402	CR	41044			423.00		02/04/14	350	8035	1 JACOBS, ROBERT & CHERYL
		41124			423.00		02/14/14	774	8033	1 GEORGE SMITH & CHRISTINA CONLE
	JE	41045		141.12			02/04/14	PINE ROCK		ANNUAL PINE ROCK INSTALLMENT
		41125		141.12			02/14/14	PINE ROCK		ANNUAL PINE ROCK INSTALLMENT
				282.24	846.00	-563.76				
1403	CR	41402			423.00		03/04/14	2307	8034	1 STOFFLET, MICHAEL
	JE	41407		141.12			03/04/14	PINE ROCK		ANNUAL PINE ROCK INSTALLMENT
				141.12	423.00	-845.64				
1405	CR	42378			423.00		05/07/14	1021	8036	1 PAPPANO, JOSEPH & PATRICIA
	JE	42380		141.12			05/07/14	PINE ROCK		ANNUAL PINE ROCK INSTALLMENT
				141.12	423.00	-1,127.52				
				564.48	1,692.00	-1,127.52				
07380-1000	MISCELLANEOUS REVENUE					0.00				

MGRP18 run by BRIAN 2 : 07 PM

Acct #	Per	Src	Trx #	Debits	Credits	Beg/End Bal	Date	Check/Ref #	ID #	Name/Description
1402	JE	41045			141.12		02/04/14	PINE ROCK		ANNUAL PINE ROCK INSTALLMENT
		41125			141.12		02/14/14	PINE ROCK		ANNUAL PINE ROCK INSTALLMENT
				0.00	282.24	-282.24				
1403		41407			141.12		03/04/14	PINE ROCK		ANNUAL PINE ROCK INSTALLMENT
				0.00	141.12	-423.36				
1405		42380			141.12		05/07/14	PINE ROCK		ANNUAL PINE ROCK INSTALLMENT
				0.00	141.12	-564.48				
				0.00	564.48	-564.48				
07392-0500	TRANSFER FROM SEWER OPERATING					0.00				
1401		40674			1,000.00		01/08/14	DEPOSIT		DEPOSIT \$ INTO MA GENERAL FROM 05 FUND
		40747			20,000.00		01/14/14	XFER		XFER \$ FROM SEWER TO MA TO COVER EXPENSES
				0.00	21,000.00	-21,000.00				
				0.00	21,000.00	-21,000.00				
07424-1400	ADMINISTRATIVE WAGES					0.00				
1403	CD	41815		8,043.02			03/31/14	2237		425 EAST GOSHEN TOWNSHIP - GENERAL 1ST QTR.2014 MUN.AUTH. REIMBURSM
				8,043.02	0.00	8,043.02				
1406		43192		8,043.02			06/30/14	2243		425 EAST GOSHEN TOWNSHIP - GENERAL 2ND QTR.2014 MUN. AUTH. REIMBURSM
				8,043.02	0.00	16,086.04				
1409		44443		8,043.02			09/26/14	2252		425 EAST GOSHEN TOWNSHIP - GENERAL 3RD QTR.2014 MUN.AUTH. REIMBURSM
				8,043.02	0.00	24,129.06				
				24,129.06	0.00	24,129.06				
07424-3000	MISCELLANEOUS EXPENSE					0.00				
1401		40597		500.00			01/06/14	2228		2737 DEP - COMMONWEALTH OF PA NPDES PERMITS - CHAPTER 92A 2014
				950.00			01/06/14	2229		2132 PENNSYLVANIA MUNICIPAL AUTHORITIES ASSOC 2014 ACTIVE MEMBERSHIP DUES
				*** 1,450.00	0.00 ***					
				1,450.00	0.00	1,450.00				

MGRP18 run by BRIAN 2 : 07 PM

Acct #	Per	Src	Trx #	Debits	Credits	Beg/End Bal	Date	Check/Ref #	ID #	Name/Description
				1,450.00	0.00	1,450.00				
07424-3110						0.00				
	1407		43405	10,800.00			07/16/14	2246	808	MAILLIE FALCONIERO & CO. 2013 FINANCIAL STMTS. EXAMINATIO
				10,800.00	0.00	10,800.00				
				10,800.00	0.00	10,800.00				
07424-3130						0.00				
	1401		40653	-663.75			01/06/14	2224	1052	PENNONI ASSOCIATES INC. VOID CK. DUE TO PRINTER PROBLEM
			40743	663.75			01/14/14	2230	1052	PENNONI ASSOCIATES INC. SERVICES THRU 12/8/13 GENERAL S
	JE		40746		1,845.00		01/14/14	REFUND		PENNONI REFUND DUE TO DUPLICATE PAYMENT
				0.00	1,845.00	-1,845.00				
	1402	CD	41103	2,236.50			02/11/14	2233	1052	PENNONI ASSOCIATES INC. SERVICES THROUGH 1/12/14 GEN.SER
				2,236.50	0.00	391.50				
	1403		41540	6,887.25			03/12/14	2236	1052	PENNONI ASSOCIATES INC. SERVICES THRU 2/9/14 2013 CHAP.
				6,887.25	0.00	7,278.75				
	1404		42153	8,808.25			04/23/14	2239	1052	PENNONI ASSOCIATES INC. SERVICES THRU 3/16/14 CHAP.94 RE
				8,808.25	0.00	16,087.00				
	1405		42462	6,198.50			05/14/14	2241	1052	PENNONI ASSOCIATES INC. SERVICES THRU 4/13/14 2013 CHAP.
				6,198.50	0.00	22,285.50				
	1406		42952	3,004.75			06/12/14	2242	1052	PENNONI ASSOCIATES INC. SERV.THUR 5/11/14 2014 SEMI-ANN
				3,004.75	0.00	25,290.25				
	1407		43405	1,521.25			07/16/14	2247	1052	PENNONI ASSOCIATES INC. SERVICES THRU 6/15/14 GEN.SERVIC
				1,521.25	0.00	26,811.50				
	1408		43811	169.50			08/12/14	2249	1052	PENNONI ASSOCIATES INC. SERV.THUR 7/13/14 2014 SEMI-ANN I&I
				169.50	0.00	26,981.00				

MGRP18 run by BRIAN 2 : 07 PM

Acct #	Per	Src	Trx #	Debits	Credits	Beg/End Bal	Date	Check/Ref #	ID #	Name/Description
07424-3130	1409	CD	44268	556.00			09/16/14	2250	1052	PENNONI ASSOCIATES INC. SERVICES THRU 8/10/14 2014 GEN.S
				556.00	0.00	27,537.00				
	1410		44708	724.75			10/14/14	2253	1052	PENNONI ASSOCIATES INC. SERVICES THRU 9/14/14 SEMI ANN.
				724.75	0.00	28,261.75				
				30,106.75	1,845.00	28,261.75				
07424-3140			LEGAL SERVICES			0.00				
	1402		41310	800.00			02/27/14	2234	528	GAWTHROP GREENWOOD & HALSTED LEGAL SERVICES - NOV.2013 GEN.AU
				800.00	0.00	800.00				
	1403		41540	700.00			03/12/14	2235	528	GAWTHROP GREENWOOD & HALSTED LEGAL SERVICE - FEB.2014 GEN.AUT
				700.00	0.00	1,500.00				
	1404		42074	960.00			04/16/14	2238	528	GAWTHROP GREENWOOD & HALSTED LEGAL SERVICE - MARCH 2014 GEN.A
				960.00	0.00	2,460.00				
	1405		42462	1,300.00			05/14/14	2240	528	GAWTHROP GREENWOOD & HALSTED LEGAL SERVICE APRIL 2014 GEN.AUT
				1,300.00	0.00	3,760.00				
	1407		43291	520.00			07/07/14	2244	528	GAWTHROP GREENWOOD & HALSTED LEGAL SERVICE MAY 2014 - GEN.AUT
			43405	1,480.00			07/16/14	2245	528	GAWTHROP GREENWOOD & HALSTED LEGAL SERVICE JUNE 2014 - GEN.AU
				2,000.00	0.00	5,760.00				
	1408		43811	80.00			08/12/14	2248	528	GAWTHROP GREENWOOD & HALSTED LEGAL SERVICE 7/3-7/14/14 GEN.AU
				80.00	0.00	5,840.00				
	1409		44372	400.00			09/22/14	2251	528	GAWTHROP GREENWOOD & HALSTED LEGAL SERVICE 8/11/14 GEN. AUTH.
				400.00	0.00	6,240.00				
	1410		44899	280.00			10/23/14	2254	528	GAWTHROP GREENWOOD & HALSTED LEGAL SERVICE SEPT.2014 GEN.AUT
				280.00	0.00	6,520.00				
				6,520.00	0.00	6,520.00				

MGRP18 run by BRIAN 2 : 07 PM

Acct #	Per	Src	Trx #	Debits	Credits	Beg/End Bal	Date	Check/Ref #	ID #	Name/Description
07424-7460	LOCHWOOD	-	CAPITAL -STP			0.00				
	1401		40739	1,290.00			01/14/14	10012	2695	BRICKHOUSE ENVIRONMENTAL LOCHWOOD CHASE PROJECT - DEC.201
			40744	-1,290.00			01/14/14	10012	2695	BRICKHOUSE ENVIRONMENTAL VOID CK. - INCORRECT CASH ACCT.U
			40745	1,290.00			01/14/14	2231	2695	BRICKHOUSE ENVIRONMENTAL LOCHWOOD CHASE PROJECT - DEC. 20
	JE		40820		1,290.00		01/22/14	DEPOSIT		DEPOSIT TO REIMBURSE 07 MA FOR 05 EXPENSE
				1,290.00	1,290.00	0.00				
				1,290.00	1,290.00	0.00				
07427-1000	RESERVE PUMP STATION	-	ENGINEER			0.00				
	1405 CD		42462	197.25			05/14/14	2241	1052	PENNONI ASSOCIATES INC. SERV.THRU 4/123/14 RESERVE PS
				197.25	0.00	197.25				
	1406		42888	7,316.82			06/11/14	10019	3133	SMITH INC., RONALD APPLIC.# 3 RESERVE PS DIVERSION
			42952	619.75			06/12/14	2242	1052	PENNONI ASSOCIATES INC. SERVICE THRU 5/11/14 RESERVE PS
			43217	-7,316.82			06/30/14	10019	3133	SMITH INC., RONALD VOID CK.10019 PAYMENT AMT.TO BE REDUCED
				619.75	0.00	817.00				
	1407		43229	3,658.41			07/02/14	10020	3133	SMITH INC., RONALD APPL.#3 RESERVE PS DIVERSION -FI
			43405	309.00			07/16/14	2247	1052	PENNONI ASSOCIATES INC. SERVICES THRU 6/15/14 RESERVE PS DIVERSION CONSTRUCTION
				3,967.41	0.00	4,784.41				
	1408		43811	476.75			08/12/14	2249	1052	PENNONI ASSOCIATES INC. SERV.THRU 7/13/14 RESERVE PS DI CONSTRUCTION
				476.75	0.00	5,261.16				
	1409		44268	111.25			09/16/14	2250	1052	PENNONI ASSOCIATES INC. SERVICES THRU 8/10/14 RESERVE PS
				111.25	0.00	5,372.41				
	1410		44708	141.25			10/14/14	2253	1052	PENNONI ASSOCIATES INC. SERVICES THRU 9/14/14 RESERVE P
	JE		44565		3,658.41		10/03/14	RECLASS		RECLASS TRX.43229 - RON SMITH INC. CHECK # 10020
				141.25	3,658.41	1,855.25				

MGRP18 run by BRIAN 2 : 07 PM

Acct #	Per	Src	Trx #	Debits	Credits	Beg/End Bal	Date	Check/Ref #	ID #	Name/Description
				5,513.66	3,658.41	1,855.25				
07427-2000				RESERVE PUMP STATION - CONSTRUCTION		0.00				
	CD	44656		2,664.79			10/09/14	10026	3133	SMITH INC., RONALD FINAL PAYMENT- RESERVE PUMP STAT
	JE	44565		3,658.41			10/03/14	RECLASS		RECLASS TRX.43229 - RON SMITH INC. CHECK # 10020
				6,323.20	0.00	6,323.20				
				6,323.20	0.00	6,323.20				
07428-1000				RESERVOIR PUMP STATION - ENGINEER		0.00				
	1402	CD	41107	10,687.50			02/11/14	10013	1052	PENNONI ASSOCIATES INC. SERV.THROUGH 1/12/14 RESERVE PS
	1403		41541	4,431.25		10,687.50	03/12/14	10014	1052	PENNONI ASSOCIATES INC. SERV.THRU 2/9/14 RESERV.RD. PS
	1404		42154	5,909.00		15,118.75	04/23/14	10015	1052	PENNONI ASSOCIATES INC. SERVICES THRU 3/16/14 RESERV.RD
	1405		42463	4,724.50		21,027.75	05/14/14	10016	1052	PENNONI ASSOCIATES INC. SERV. THRU 4/13/14 RESERVOIR RD.
			42514	3,150.00			05/16/14	10017	3312	CONESTOGA & ASSOCIATES PROF.SERVICE THRU 3/30/14 RESERV RD. PS - BOG TURTLE HABITAT
	1406		42888	5,761.25		28,902.25	06/11/14	10018	1052	PENNONI ASSOCIATES INC. SERV.THRU 5/11/14 RESERVOIR RD.
	1407		43406	430.00		34,663.50	07/16/14	10021	1052	PENNONI ASSOCIATES INC. SERV.THRU 6/15/14 RESERVOIR RD.
			43421	100.00			07/18/14	10022	3353	COMMONWEALTH FINANCING AUTHORITY GRANT APPLICATION FOR DCED SEWAG FACILITIES GRANT FOR ACT 537 PLANNING FOR RESERVOIR RD P/S
	1408		43810	1,208.75		35,193.50	08/12/14	10023	1052	PENNONI ASSOCIATES INC. SERV.THRU 7/13/14 RESERVOIR RD P ACT 537 PLANNING

MGRP18 run by BRIAN 2 : 07 PM

Acct #	Per	Src	Trx #	Debits	Credits	Beg/End Bal	Date	Check/Ref #	ID #	Name/Description
				1,208.75	0.00	36,402.25				
1409		44269		414.00			09/16/14	10024	3312	CONESTOGA-ROVERS & ASSOCIATES PROF.SERV.THRU 7/27/14 BOG TURL HABITAT ASSESSMENT
				781.25			09/16/14	10025	1052	PENNONI ASSOCIATES INC. SERV.THURU 8/10/14 RESERVOIR RD P
			***	1,195.25	0.00	***				
				1,195.25	0.00	37,597.50				
1410		44709		441.25			10/14/14	10027	1052	PENNONI ASSOCIATES INC. SERV.THURU 9/14/14 RESERVOIR RD.
				441.25	0.00	38,038.75				
				38,038.75	0.00	38,038.75				
Beg Bal		0.00		124,735.90	132,268.97	-7,533.07				



pennsylvania
DEPARTMENT OF COMMUNITY
& ECONOMIC DEVELOPMENT

October 30, 2014

Jack Yahraes, Chairman, Municipal Authority
EAST GOSHEN MUNICIPAL AUTHORITY
1580 Paoli Pike

West Chester PA 19380

Dear Grantee:

Enclosed is one copy of your Sewage Facilities Program commitment letter and grant agreement in the amount of \$37,162. The assigned grant number for this project is C000059582 and should be used in all future correspondence regarding the status of your grant or payments.

Please have two (2) officials or authorized representatives of your organization sign the grant agreement with original signatures, titles and dates entered. The commitment letter, attached to the grant agreement as Appendix A & B, must also be signed with original signatures as noted. Return the SIGNED GRANT AGREEMENT IN ITS ENTIRETY as soon as possible to:

Brian D. Eckert, Director
Department of Community and Economic Development
Center for Business Financing – CFA Programs Division
Commonwealth Keystone Building
400 North Street, 4th Floor
Harrisburg, PA 17120-0225

When executed, a complete copy of the fully signed grant agreement will be returned to you for your files. It should be pointed out that this grant agreement is not binding in any way, nor will the Commonwealth be bound, until this document has been fully executed and authenticated by all required signatures. Any costs incurred by the Grantee prior thereto may be deemed incurred at the Grantee's risk.



Center
for Business
Financing,
Site
Development

Commonwealth
Keystone Building
400 North Street
4th Floor

Harrisburg
Pennsylvania
17120-0225

tel: 717:787.6245
fax: 717.772.3581
866-GO-NEWPA | newPA.com

Page Two

Please note that the funds provided under this grant agreement are State funds. You should be aware that the Authority does not accept "Single Audits" for State funded grant agreements. If you have any questions regarding the audit requirements under this grant agreement, you may contact the CFA Programs Division at 717-787-6245.

Under Article IV, Bonding, Insurance and Tax Liability Requirements, the Department waives the fidelity bonding requirement set forth in Article IV of the Contract.

Please be advised, that the activities, eligibility requirements, and other information contained in your Commitment Letter (Appendix A & B) and in your application are legally binding.

Please review your entire grant agreement carefully for compliance requirements. If you have a question as to the applicability of a particular provision, please contact the Center for Business Financing, CFA Programs Division at (717) 787-6245.

Sincerely,

A handwritten signature in black ink, appearing to read 'B. Eckert', with a long horizontal flourish extending to the right.

Brian D. Eckert, Director
Site Development Division

Enclosures

Memo
East Goshen Township
1580 Paoli Pike
West Chester, PA 19380

Voice (610) 692-7171
Fax (610) 425-8950
E-mail rsmith@eastgoshen.org

Date: October 22, 2014
To: Municipal Authority
From: Rick Smith, Township Manager
Re: Wineberry Lane Storm Sewer

Wineberry Lane is a short cul-de-sac street. The stormwater management system for the street consists of a California inlet.

Note: A California inlet does not have a discharge pipe. Instead, there are holes in the inlet box and the inlet is set in a stone bed. In theory the stormwater will seep back into the soil. With suitable soils California inlets are an effective way to put stormwater back into the ground. However, they need regular maintenance and have to be redone every 8-10 years.

The California inlet on Wineberry Lane needs to be redone again.

Unfortunately the soils on Wineberry Lane are not suitable for this type of stormwater management. A house was recently constructed on a vacant lot on Wineberry Lane, and builder had to use an extended detention basin for stormwater control as opposed to an infiltration bed.

The California inlet is located in front of the property owned by Mr. Angelini who also owns the vacant lot behind this property. Mr. Angelini would be willing to grant us an easement over both of his properties to pipe the runoff to the culvert the going under Cornwallis Drive. The new pipe would be within the easement used for the sanitary sewer line, so Mr. Angelini would not lose any building area. In order to manage the stormwater we would install perforated pipe bedded in stone to the culvert under Cornwallis Drive. This lot is where part of the Meadowbrook Cornwallis sewer project.

Mark estimates it will cost \$18,750 to install the perforated pipe. It would cost \$5,800 to rebuild the California inlet plus we would spend \$800 on maintenance. We would need to redo the inlet again in 8-10 years. Mark and I believe that spending the additional money now for a permanent solution is worth the additional cost. Jon concurs (see attached).

At their meeting on October 14 the Board agreed to install the perforated pipe. Since the new pipe will be located within the sanitary sewer the Authority needs to be a party to the new easement. Kristin Camp has prepared the easement.

The Authority needs to authorize the Chairmen to execute the revised agreement.

Life cycle costing of Wineberry Lane Stormwater

Inflation 2%
 Discount rate 3%

Year			Inflation	
	California Inlet	Perforated pipe	California Inlet	Perforated pipe
1	5800	18750	5,916	19,125
2	800	0	832	-
3	800	0	849	-
4	800	0	866	-
5	800	0	883	-
6	800	0	901	-
7	800	0	919	-
8	800	0	937	-
9	800	0	956	-
10	800	0	975	-
11	5800	0	7,212	-
12	800	0	1,015	-
13	800	0	1,035	-
14	800	0	1,056	-
15	800	0	1,077	-
16	800	0	1,098	-
17	800	0	1,120	-
18	800	0	1,143	-
19	800	0	1,165	-
20	800	0	1,189	-
21	5800	0	8,791	-
22	800	0	1,237	-
23	800	0	1,262	-
24	800	0	1,287	-
25	800	0	1,312	-
26	800	0	1,339	-
27	800	0	1,366	-
28	800	0	1,393	-
29	800	0	1,421	-
30	800	0	1,449	-
	10 years		\$12,536.48	\$18,567.96
	20 years		\$23,907.64	\$18,567.96
	30 years		\$34,221.81	\$18,567.96

Prepared by/Return to:
Kristin S. Camp, Esquire
BUCKLEY BRION McGUIRE & MORRIS LLP
118 W. Market Street, Suite 300
West Chester, PA 19382

UPI Nos. 53-4-59.1, 53-4-58.4

STORMWATER DRAINAGE EASEMENT

THIS EASEMENT is made this ____ day of _____, 2014, between **VINCENT J. ANGELINI, SR., TRUSTEE OF THE VINCENT J. ANGELINI, SR. REVOCABLE AGREEMENT OF TRUST DATED FEBRUARY 14, 2014**, having an address of 959A Cornwallis Drive, West Chester, Pennsylvania 19380 (“Owner”), **EAST GOSHEN TOWNSHIP**, a political subdivision organized under the applicable laws of the Commonwealth of Pennsylvania with an address of 1580 Paoli Pike, West Chester, Pennsylvania 19380 (the “Township”) and **EAST GOSHEN MUNICIPAL AUTHORITY**, a body corporate and politic organized under the applicable laws of the Commonwealth of Pennsylvania with an address of 1580 Paoli Pike, West Chester, Pennsylvania 19380 (the “Authority”).

WITNESSETH

WHEREAS, Owner owns two tracts of land situate in the Township identified as follows:

1. 1592 Wineberry Lane, East Goshen Township, Chester County, Pennsylvania, Chester County Tax Parcel No. 53-4-58.4, as acquired by Deed dated February 14, 2014, recorded in Book 8892, Page 2026 in the Office of the Recorder of Deeds of Chester County, Pennsylvania on March 4, 2014; and

2. 947 Cornwallis Drive, East Goshen Township, Chester County, Pennsylvania, Chester County Tax Parcel No. 53-4-59.1, as acquired by Deed dated February 14, 2014, recorded in Book 8892, Page 2050 in the Office of the Recorder of Deeds of Chester County, Pennsylvania on March 4, 2014; and Collectively referred to herein as the "Property."

WHEREAS, the Property is encumbered by two (2) certain Right-of-Way Agreements which were granted to the Authority by Owner's predecessors in title in the following agreements:

1. Right-of-Way Agreement dated August 4, 1994, recorded in Record Book 3873, Page 1500 in the Recorder of Deeds in and for Chester County, Pennsylvania; and
2. Right-of-Way Agreement dated February 24, 1995, recorded in Record Book 3873, Page 1243 in the Recorder of Deeds in and for Chester County Pennsylvania

Collectively referred to as the "Sanitary Sewer Easement".

WHEREAS, the Township intends within the Sanitary Sewer Easement to install, construct and maintain certain stormwater piping, inlets, manholes and other appurtenances to service the stormwater system of the Township (the "System"); and

WHEREAS, Owner and the Authority grant to the Township within the Sanitary Sewer Easement the right to construct, install, maintain, repair and replace the System necessary to convey stormwater from the existing inlet in Wineberry Lane to the existing culvert on Cornwallis Drive.

NOW, THEREFORE, in consideration of the mutual covenants hereinafter contained, and in consideration of the payment to Owner and the Authority the sum of One (\$1.00) Dollar, and other good and valuable consideration, receipt of which is hereby acknowledged by Owner and the Authority, and intending to be legally bound hereby, Owner and the Authority do hereby agree as follows:

1. **Grant to the Township.** Owner hereby grants and the Authority hereby acknowledges the free and uninterrupted right, liberty, and privilege to the Township:

(a) To install, construct, reconstruct, replace, remove, enlarge, inspect, operate, repair, make connections with and maintain perpetually the System under and over the strip of land twenty (20') feet wide, more or less, across the aforesaid tract of land belonging to Owner, together with a temporary ten (10') foot wide construction easement as shown on a plan marked Exhibit "A" and as more particularly described by the metes and bounds on Exhibit "B" hereto and within the aforesaid Sanitary Sewer Easement.

(b) To maintain, control, and dispose of stormwater through the System.

To have and to hold the same perpetually to the Township and its successors or assigns, together with the right and privilege at any and all times to enter the said Property, or any part thereof, provided that the Township gives to Owner and Authority reasonable advance notification of the nature of any intended work on the Property and Easement Area, the expected duration of such work, for the purpose of installing, constructing, reconstructing, replacing, removing, enlarging, inspecting, operating, repairing, maintaining, and/or making connections within the System or other

appropriate means of access to the System; all upon the condition that the Township will at all times during the construction, reconstruction, replacement, removal, repair or maintenance of the System cause every reasonable means to be used to protect from injury or damage all property or any existing improvement thereto, and will at all times after doing any work in connection with the construction, reconstruction, replacement, removal, repair or maintenance of the System, cause the said Property to be restored to the condition in which the same was found before such work was undertaken to the extent reasonably possible under the circumstances and consistent with the rights and privileges herein granted.

3. **Covenants of Owner and Authority.**

(a) Owner does hereby covenant that it is lawfully seized and possessed of a good and marketable title in fee simple to the Property and that it has a good and lawful right to grant the rights and privileges herein granted to the Township, and it further covenants that it will execute or procure any additional necessary assurances of the rights and privileges herein granted.

(b) Owner and Authority do hereby release, remise, quitclaim and discharge the Township and its several agents, servants, contractors and employees from any claim or right to damages or other emolument of value for the rights, liberties and privileges given and granted to the Township under this Easement.

(c) Owner and Authority do hereby covenant that no structure or other obstruction shall be erected or permitted over the Easement Area, except as may be permitted in the Right-of-Way Agreements.

(d) The provisions of this Agreement shall be binding upon and inure to the benefit of the Township, its successors and assigns, and further be binding to the Authority, its successors and assigns and Owner, its executors, administrators, successors and assigns.

OWNER:

**VINCENT J. ANGELINI, SR.,
TRUSTEE OF THE
VINCENT J. ANGELINI, SR.
REVOCABLE AGREEMENT OF
TRUST DATED FEBRUARY 14, 2014**

Witness

By: _____
Vincent J. Angelini, Trustee

ATTEST:

AUTHORITY:

**EAST GOSHEN MUNICIPAL
AUTHORITY**

By: _____
Jack E. Yahraes, Chairman

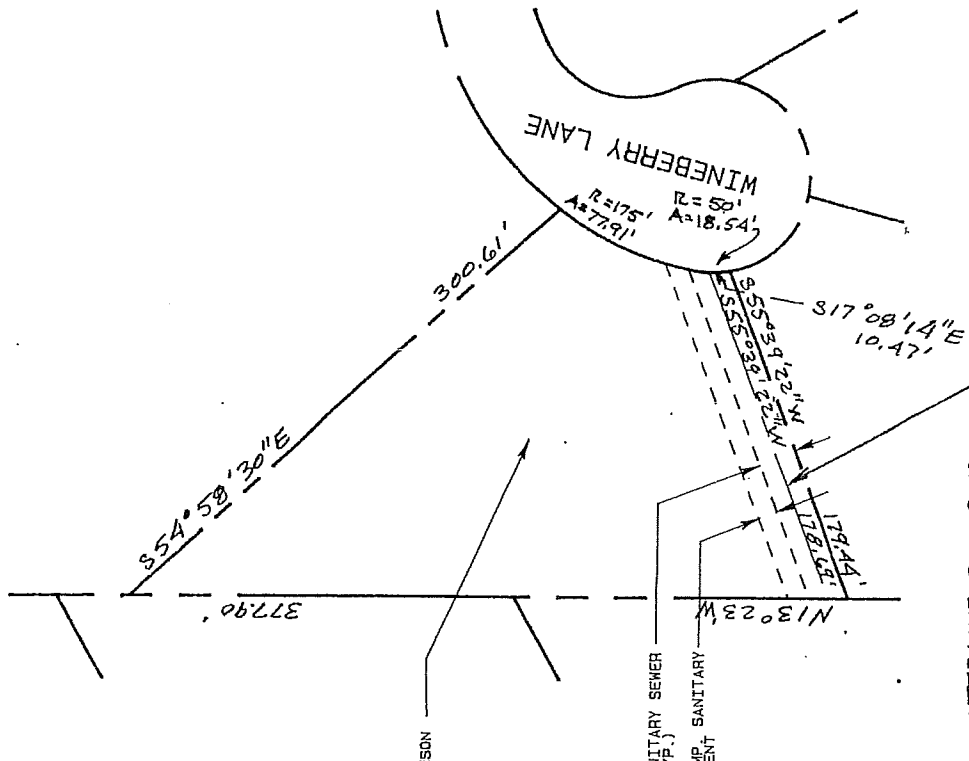
ATTEST:

TOWNSHIP:

EAST GOSHEN TOWNSHIP

By: _____
E. Martin Shane, Chairman
Board of Supervisors

PLAN OF
 20 FEET WIDE SANITARY SEWER EASEMENT
 FOR
EAST GOSHEN MUNICIPAL AUTHORITY
 EAST GOSHEN TOWNSHIP CHESTER COUNTY
 PENNSYLVANIA
 DATE: 6-30-1994 SCALE: 1" = 100'
 TAX PARCEL 53-4-58.4
 FILE: W9262-026



LANDS N/F OF
 MICHAEL P. McDEVITT & HEATHER A. SMITHSON
 DEED BOOK 3671, PAGE 1425

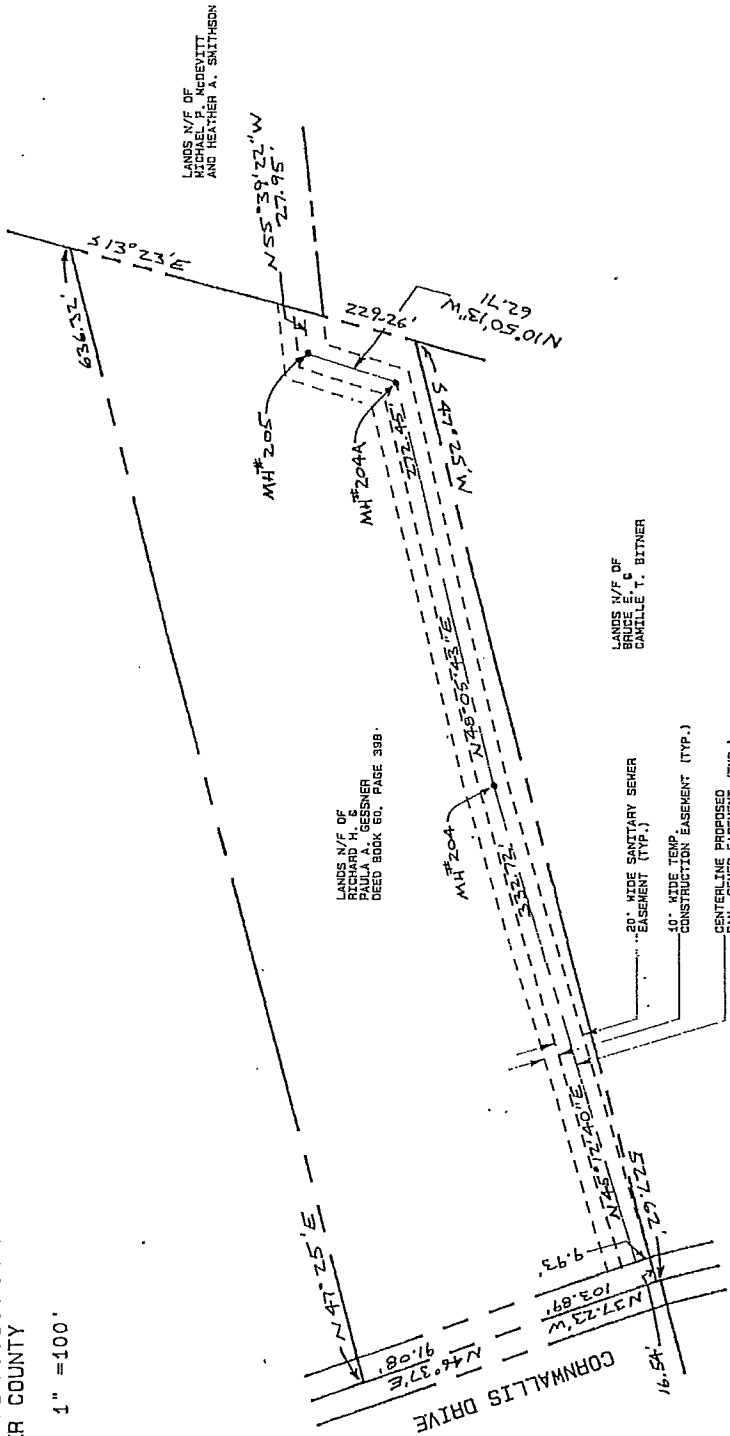
LANDS N/F OF
 RICHARD H. AND
 PAULA A. GESSNER

CENTERLINE PROPOSED
 SANITARY SEWER EASEMENT
 JOSEPH & DIANE
 MUSSARI

YERKES ASSOCIATES INC.
 ENGINEERS AND SURVEYORS
 WEST CHESTER, PENNSYLVANIA

PLAN OF
 20 FEET WIDE SANITARY SEWER EASEMENT
 FOR
EAST GOSHEN MUNICIPAL AUTHORITY
 EAST GOSHEN TOWNSHIP CHESTER COUNTY
 PENNSYLVANIA
 DATE: 11-07-1994 SCALE: 1" = 100'
 TAX PARCEL 53-4-59
 FILE: W9262-026

EXHIBIT "A"
 PAGE 2 OF 2



YERKES ASSOCIATES INC.
 ENGINEERS AND SURVEYORS
 WEST CHESTER, PENNSYLVANIA

June 30, 1994

CENTERLINE DESCRIPTION OF A
PORTION OF A
20' WIDE SANITARY SEWER EASEMENT
FOR
EAST GOSHEN MUNICIPAL AUTHORITY
THROUGH LANDS OF
MICHAEL P. MC DEVITT AND HEATHER A. SMITHSON
EAST GOSHEN TOWNSHIP, CHESTER COUNTY
PENNSYLVANIA

All that certain 20 foot wide strip of land, described along the centerline, situate in the Township of East Goshen, County of Chester, Commonwealth of Pennsylvania bounded and described in accordance with a 20 foot wide Sanitary Sewer Easement Plan made for East Goshen Municipal Authority, dated June 30, 1994 by Yerkes Associates, Inc., West Chester, Pennsylvania being Plan #SM-C-53-4-58.4 and being more particularly described as follows, to wit:

BEGINNING at a point in line of lands of Michael P. Mc Devitt and Heather A. Smithson on the perimeter of the cul-de-sac of Wineberry Lane (radius 50 feet), said point being at the arc distance of 18.54 feet measured along the arc of a circle curving to the right in a northerly direction having a radius of 50 feet from a common corner of said lands of Mc Devitt and Smithson and lands of Joseph and Diane Mussari on said cul-de-sac of Wineberry Lane; thence extending from the BEGINNING point, through said lands of Mc Devitt and Smithson, along the centerline of the herein described 20 foot sanitary sewer easement, South 55 degrees 39 minutes 22 seconds West, 178.69 feet to a point in line of lands of Richard H. and Paula A., Gessner.

Being subject to an additional temporary 10 foot wide construction easement as shown on said plan.

EXHIBIT "B" PAGE 1 OF 2

Engineers / Architects / Landscape Architects / Surveyors

Offices: Bryn Mawr and West Chester, Pennsylvania

November 7, 1994

CENTERLINE DESCRIPTION OF A
PORTION OF A
20' WIDE SANITARY SEWER EASEMENT
FOR
EAST GOSHEN MUNICIPAL AUTHORITY
THROUGH LANDS OF
RICHARD H. AND PAULA A. GESSNER
EAST GOSHEN TOWNSHIP, CHESTER COUNTY
PENNSYLVANIA

All that certain 20 foot wide strip of land, described along the centerline, situate in the Township of East Goshen, County of Chester, Commonwealth of Pennsylvania bounded and described in accordance with a 20 foot wide Sanitary Sewer Easement Plan made for East Goshen Municipal Authority, dated November 7, 1994 by Yerkes Associates, Inc., West Chester, Pennsylvania being Plan #SM-C-53-4-59 and being more particularly described as follows, to wit:

BEGINNING at an interior point in line of lands of Richard H. and Paula A. Gessner on the easterly side of Cornwallis Drive, said point being at the distance of 9.93 feet measured North 37 degrees 23 minutes West along the said side of Cornwallis Drive from a point in line of lands of Bruce E. and Camille T. Bitner, said last mentioned point being at the distance of 16.54 feet measured North 47 degrees 25 minutes East along said lands of Gessner and said lands of Bitner from a common corner of same on the title line of said Cornwallis Drive; thence extending through said lands of Gessner, along the centerline of the herein described 20 foot wide sanitary sewer easement the four following courses and distances: (1) North 45 degrees 12 minutes 40 seconds East, 332.72 feet to sanitary manhole 204; (2) North 48 degrees 05 minutes 43 seconds East, 272.45 feet to sanitary manhole 204A; (3) North 10 degrees 50 minutes 13 seconds West, 62.71 feet to sanitary manhole 205; (4) North 55 degrees 39 minutes 22 seconds West, 27.95 feet to a point in line of lands of Michael P. McDevitt and Heather A. Smithson.

Being subject to an additional temporary 10 foot wide construction easement as shown on said plan.

EXHIBIT "B"

PAGE 2 OF 2



PENNONI ASSOCIATES INC.
CONSULTING ENGINEERS

November 4, 2014

EGMA1500

Rick Smith, Township Manager
East Goshen Township
1580 Paoli Pike
West Chester, PA 19380

Re: Fee Schedule for Year 2015 and Annual Services
East Goshen Municipal Authority

Dear Rick:

Pennoni Associates Inc. is proud to serve East Goshen Municipal Authority, and we look forward to working with you again in 2015. We have enjoyed the challenging projects this year, and we cherish the relationships we have formed with the Authority, the Township, and the community. We respectfully request reappointment as Authority Engineer for 2015.

The proposed rates shown below for 2015 apply to our work as Municipal Authority Engineer, and these rates are the same as those proposed for our Township Engineer appointment. We are proposing a modest \$2.00/hour increase for each classification resulting in a range of increases from 1.8% to 3.1%, for an average increase of approximately 2.4%.

Authority Engineer.....	\$115/hr
Senior Engineer.....	\$110/hr
Project Engineer.....	\$97/hr
Staff Engineer.....	\$90/hr
Associate Engineer.....	\$85/hr
Senior Engineering Technician.....	\$85/hr
Graduate Engineer.....	\$77/hr
Engineering Technician II.....	\$77/hr
Engineering Technician I.....	\$67/hr

While our company has many employee classifications, these are the classifications most frequently utilized in performing tasks for our municipal clients. We assign the most appropriate level staff competent to perform the work effort requested.

As part of our responsibilities to the Authority as the appointed Engineer, we will provide the following professional services:

- Participation in monthly meetings of the Authority Board.
- Preparation of the semi-annual sewer reports in March and September.
- Continuing support in I&I reduction with sewer meter data review and periodic reports internal to the Authority.
- Preparation of the annual Chapter 94 Municipal Wasteload Management Reports.
- Consultation on issues on behalf of the Authority

The estimated total fee for annual services is \$37,300, to be billed on an hourly basis at the above rates. We have allocated the budget as follows:

- Monthly meetings and general consultation \$12,000
- Semi-annual I/I reports \$10,500
- Chapter 94 reports \$14,800

The estimated fee for "Monthly meetings and general consultation" is based upon the level of effort for that work over the past three years, and the reports are increased by 2% to 3% from the respective 2014 fees.

Similar to previous years, we will establish separate accounts for each project listed above, and each project will be invoiced separately. Other projects outside of general services, as requested, will be proposed separately and at the approved rates schedule.

If you have any questions, please feel free to contact me.

Sincerely,

PENNONI ASSOCIATES INC.



Michael J. Ellis, PE
Authority Engineer



Gawthrop Greenwood, PC
Attorneys at Law

17 East Gay Street, Suite 100, P.O. Box 562 p. 610.696.8225
West Chester, PA 19381-0562 www.gawthrop.com

OCT 24 2014

Patrick M. McKenna
610.696.8225 x 155
610.344.0922 fax
pmckenna@gawthrop.com

October 21, 2014

Louis F. Smith, Jr., Manager
East Goshen Township
1580 Paoli Pike
West Chester, PA 19380-6199

Re: **2015 Fees For Legal Services**

Dear Rick:

Please be advised that for 2015, Gawthrop Greenwood has no plans to change the rates or the terms of engagement under which we currently service East Goshen Municipal Authority.

The firm is pleased to have the continuing opportunity to provide legal services to the Municipal Authority in 2015 at our current rate of \$200 per hour. I highly value our long-standing relationship with East Goshen Township and its officials and staff. I would expect that for purposes of budgeting you would be safe in assuming that our experience in 2015 will be similar to the amount of work we did in 2014.

Very truly yours,


Patrick M. McKenna

PMM/cb

Rick Smith

From: Michael Ellis <MEllis@Pennoni.com>
Sent: Tuesday, October 14, 2014 11:03 AM
To: rsmith@eastgoshen.org
Subject: Reservoir Road PS - Permit Durations

Rick,

As requested by the Municipal Authority last night, following are the effective durations for all the permits and approvals expected to be needed for the project:

- PADEP Water Quality Management (WQM) Permit = Indefinite
- PADEP General Permit 5 "Utility Line Stream Crossings" = allows the pipe to be located under the stream indefinitely; however, the standard PA State Programmatic General Permit-4 (PASPGP-4) form that gets attached to it currently requires construction by June 30, 2016. This end date may change by the time we apply for the Reservoir Road project, but I would expect it will not exceed 5 years.
- PADEP General Permit 8 "Temporary Road Crossings (across streams)" = same as General Permit 5
- PADEP Floodplain Encroachment Permit/Approval = expected to be same as General Permit 5. This could change if PADEP requires a joint permit from the Army Corps of Engineers instead. My interpretation of the joint permit requirements is that one will not be required for this project.
- NPDES Permit for Construction Activities = 5 years. These can be extended if a renewal application is submitted 180 days before permit expiration.
- Conservation District E&S Approval = Same duration as NPDES Permit.
- East Goshen Township Preliminary/Final Land Development Plan approval = 5 years from date of Preliminary approval
- PennDOT Highway Occupancy Permit(s) = 1 year
- Sunoco and other pipeline crossing approvals = Very limited duration, say 1 year. They will likely want to meet and re-approve the plan regardless of when construction actually occurs, particularly if new pipelines are installed on Rt 352.

The most complicated and lengthy permit applications are the WQM Permit, NPDES Permit, and Joint Permit (if one is required). Unless an unexpected condition is attached to the WQM Permit, there should be no expiration. An application to extend the NPDES permit will need to be submitted at least every 4.5 years. The Township's Land Development approval will also need to be extended at the same frequency.

The other permits (PADEP GP's and PennDOT HOP) will likely expire before the work is performed, but these are fairly easy and quick permits to reapply for in the future when construction is needed. Alternatively, the GPs could be re-applied/extended every few years, and the HOP could be extended annually. If expired, the GP and HOP permits should be re-applied for 6 and 3 months respectively before the project is planned to be bid.

Please note that this is my expectation of the permits and approvals that will be required. The exact requirements will be determined at a permit pre-application meeting with PADEP.

Mike

Michael J. Ellis, PE

Pennoni Associates Inc.
Christiana Executive Campus
121 Continental Drive, Suite 207

Newark, DE 19713-4310
Office 302-655-4451 x5236 | Direct 302-351-5236
Fax 302-654-2895 | Mobile 302-561-4235
<http://www.pennoni.com> | mellis@pennoni.com

Consulting Engineers providing...

*Environmental – Geotechnical – Inspection & Testing – Land Development – MEP
Landscape Architecture – Structural – Survey – Transportation – Water/Wastewater*



EDWARD B. WALSH & ASSOCIATES, INC.
Complete Civil Engineering & Land Surveying Services
Lionville Professional Center
125 Dowlin Forge Road
Exton, PA 19341

November 5, 2014

East Goshen Township
Municipal Authority
1580 Paoli Pike
West Chester, PA 19380

RE: Callaghan Subdivision
1131 North Chester Road
East Goshen Township, Chester County, PA
UPI 53-2-31.2

Dear Authority Members,

I am writing this letter on behalf of my client Mr. James Callaghan . He has engaged us to prepare a two lot subdivision plan for his property cited above. One lot will contain his existing house and is currently serviced by public sewer and the other lot will be sold and eventually will be served by public sewer. In order for that to occur my client will need to reserve one EDU from the Authority. The EDU will be utilized once the house is constructed.

Therefore I respectfully request the East Goshen Authority to consider reserving and/or allocating one (1) EDU for the future tie-in of a house on Lot 2 of his subdivision. We fully understand that tap in fees will be required to be paid with the filling of the building permit application.

I thank you in advance for your consideration with this matter. If you have any questions or need any additional information please contact me.

Very truly yours,
EDWARD B. WALSH & ASSOC., INC.

Andrew Eberwein
Project Manager

REGISTERED PROFESSIONAL ENGINEERS & LAND SURVEYORS
Pennsylvania, New Jersey, Delaware, Maryland & North Carolina
610-903-0060 FAX 610-903-0080
www.ebwalshinc.com
Established 1985