



# ***Maxi-Rigs***

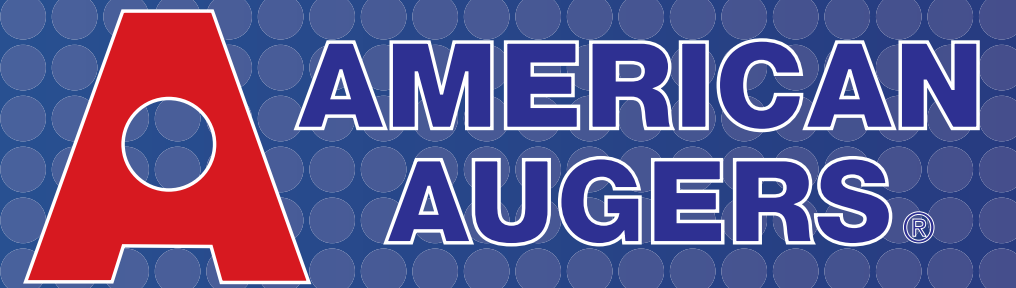
**Horizontal Directional Drills**



**DD-440T**  
**DD-660RS**  
**DD-1100RS**

# **DD-440T**

Horizontal Directional Drill



***Our Best Selling Maxi!***



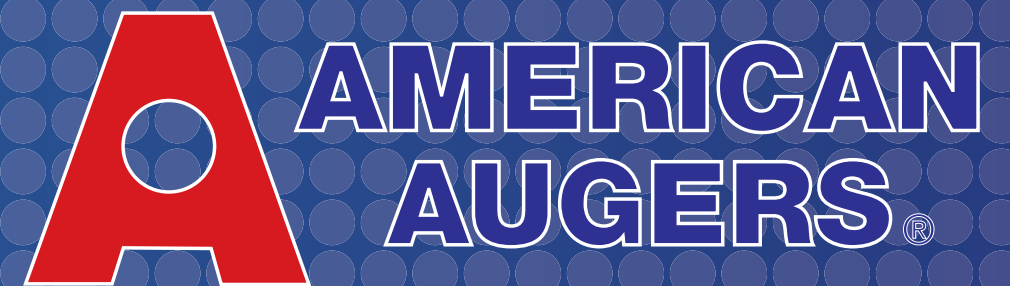
- The only track mounted Directional Drill that offers the highest range of thrust / pullback power
- 60,000 ft. lbs. (81,350 Nm) maximum rotary torque
- Wireline commutator for speedy hookup of the wireline guidance equipment



***440,000 lbs. (200 Tonnes) Thrust//Pullback***

# DD-660RS

Horizontal Directional Drill



*The Latest Edition to the Rapid Setup Line of Rigs!*



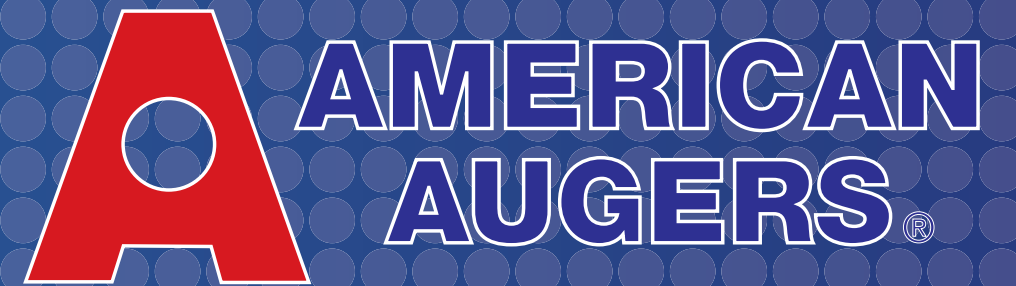
- Pipe loader transports with the rig
- Micro-processor, touch screen controls
- Variable cooling fan for superior noise reduction
- Cummins QSX15 T4 final engine (or Tier 3 depending on country of purchase)



**660,000 lbs. (300 Tonnes) Thrust//Pullback**

# DD-1100RS

Horizontal Directional Drill



**World Record Crossing Strength!**  
**2.05 miles (3300 m) of 18 in. (460 mm) Pipe**



- The ease of mobility and versatility with maximum power
- 100,000 ft. lbs. (136,000 Nm) maximum rotary torque
- Microprocessor controlled
- Optional Pipeloader

**1,100,000 lbs. (500 Tonnes) Thrust//Pullback**

# Performance Specifications

\*\*Note: All product performance specifications, components, weights, dimensions and other related information are subject to change without notice from the manufacturer.

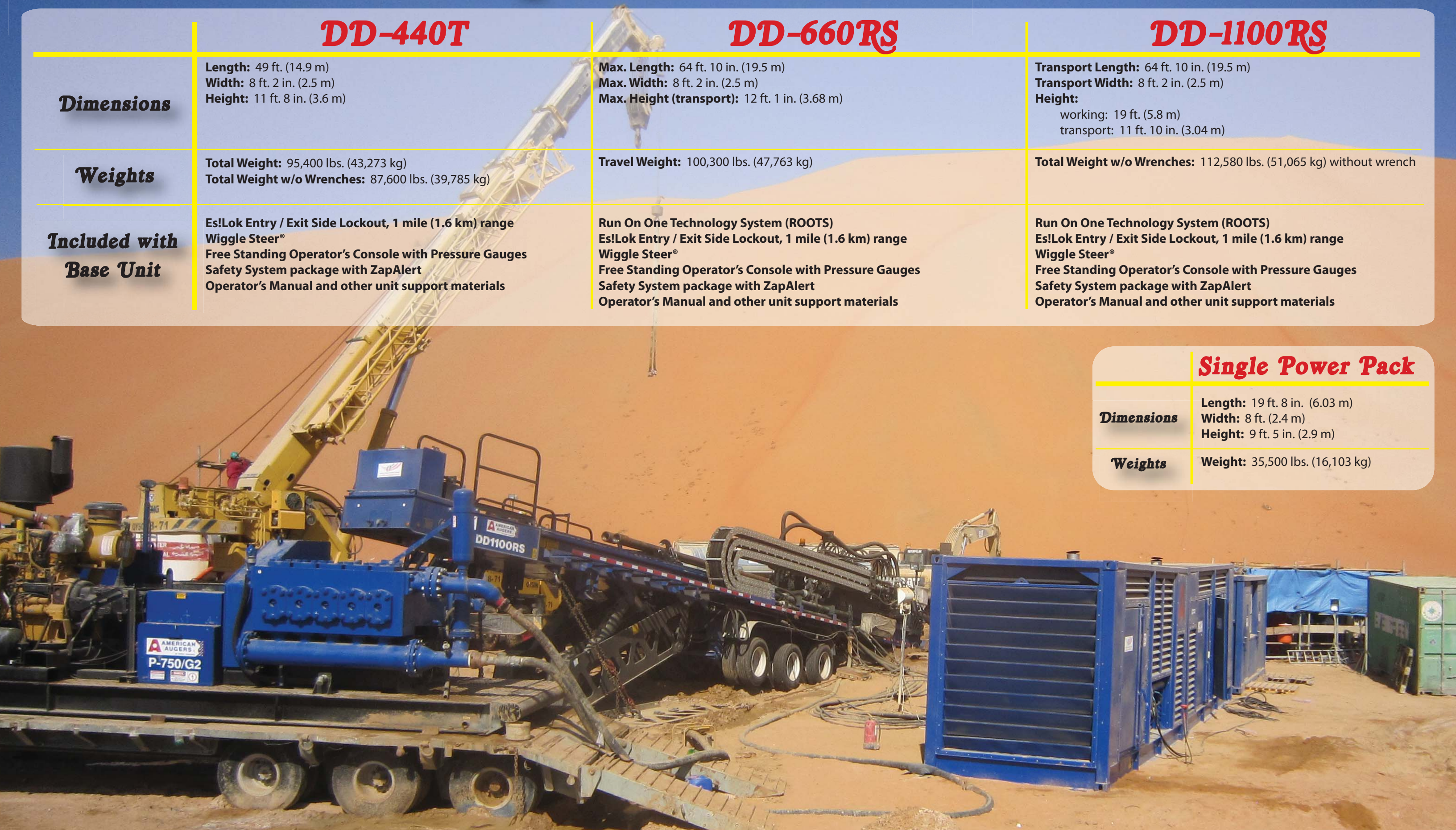
	DD-440T	DD-660RS	DD-1100RS
Power Train	<b>Engine:</b> Cummins QSX15 Tier 4 Final or Tier 3 <i>(depending on country of purchase)</i> <b>Rating:</b> 600 HP (447 kW) <b>Fuel Capacity:</b> 160 U.S. Gallons (605 L) <b>Hydraulic Capacity:</b> 200 U.S. Gallons (757 L) <b>Battery:</b> (2) Deka 908DME, 12 V, 1450 CCA <b>Quiet Pak Technology</b>	<b>Engine:</b> Cummins QSX15 Tier 4 Final or Tier 3 <i>(depending on country of purchase)</i> <b>Rating:</b> 600 HP (447 kW) each <b>Fuel Capacity:</b> 650 U.S. Gallons (2,460 L) <b>Requires 2 Power Packs for optimal performance</b> <b>Hydraulic Filter:</b> High Pressure Filtration and return to 6 micron ABS <b>Advanced Quiet Pak Technology with Variable Cooling</b>	<b>Engine:</b> CAT C-18 Tier 3 diesel or Tier 4i <i>(depending on country of purchase)</i> <b>Rating:</b> 765 HP (570 kW) <b>Fuel Capacity:</b> 650 U.S. Gallons (2,460 L) <b>Requires 2 Power Packs for optimal performance</b> <b>Hydraulic Capacity:</b> 220 U.S. Gallons (833 L) <b>Hydraulic Filter:</b> High Pressure Filtration return to 6 micron ABS <b>Quiet Pak Technology</b>
Carriage System	<b>Carriage System:</b> Rack & Pinion, (2) Pinion Drive with Adjustable Force Limiter <b>Max. Thrust / Pullback:</b> 440,000 lbs. (200 Tonnes) <b>Max. Carriage Speed:</b> 95 ft. (29 m) / minute <b>Carriage Motors:</b> (2) Hyd., 1017 cc, Variable Displacement <b>Carriage Gearbox:</b> (2) Planetary	<b>Carriage System:</b> Rack & Pinion, (4) Pinion Drive with Adjustable Force Limiter <b>Max. Thrust / Pullback:</b> 660,000 lbs. (300 Tonnes) <b>Max. Carriage Speed:</b> 107 ft. (33 m) / minute <b>Carriage Motors:</b> (4) 1017 cc, Variable Displacement <b>Carriage Gearbox:</b> (4) Planetary gearboxes	<b>Carriage System:</b> Rack & Pinion, (6) Pinion Drive with Adjustable Force Limiter <b>Max. Thrust / Pullback:</b> 1,100,000 lbs. (500 Tonnes) <b>Max. Carriage Speed:</b> 101 ft. (30.7 m) / minute <b>Carriage Motors:</b> (6) 1017 cc, Variable Displacement <b>Carriage Gearbox:</b> (6) Planetary
Rotary Drive	<b>Rotary Drive:</b> (3) Pinion and Gear Drive with Infinitely Variable Torque <b>Max. Rotary Torque:</b> 60,000 ft. lbs. (80,000 Nm) <b>Max. Rotary Speed:</b> 95 RPM <b>Rotary Motor:</b> (3) 160 cc, Axial piston, Variable Displacement <b>Rotary Brakes:</b> (2) Spring Applied/Hydraulic Release <b>Fluid Course:</b> 3 in. (76 mm) <b>Max. Flow:</b> Permits up to 650 U.S. Gallons (2,460 L) / minute <b>Max. Pressure:</b> 1,500 psi (103 bar)	<b>Rotary Drive:</b> (4) Pinion and Gear Drive with Infinitely Variable Torque <b>Max. Rotary Torque:</b> 80,000 ft. lbs. (108,460 Nm) @ 0-34 rpm <b>Max. Rotary Speed:</b> 90 RPM <b>Fluid Course:</b> 3 ¾ in. (95.25 mm) for increased downhole hydraulic power <b>Max. Flow:</b> Permits up to 1,000 U.S. Gallons (3,785 L) / minute <b>Max. Pressure:</b> 1,500 psi (103 bar) <b>Hydraulic Pump:</b> (4) Piston Pump, closed loop <b>Auxiliary Pump:</b> (1) Piston Pump, pressure compensated	<b>Rotary Drive:</b> (4) Pinion and Gear Drive with Infinitely Variable Torque <b>Max. Rotary Torque:</b> 100,000 ft. lbs. (136,000 Nm) @ 0-37 rpm <b>Max. Rotary Speed:</b> 85 RPM <b>Rotary Motor:</b> (4) 160 cc Axial Piston / Variable Displacement <b>Rotary Brakes:</b> (4) Spring Applied/Hydraulic Release <b>Fluid Course:</b> 4 in. (102 mm) for increased downhole hyd. power <b>Max. Flow:</b> Permits up to 1,000 U.S. Gallons (3,785 L) / minute <b>Max. Pressure:</b> 1,500 psi (103 bar) <b>Hydraulic Pump:</b> (2) Piston pump, closed loop <b>Auxiliary Pump:</b> (1) Piston Pump, pressure compensated <b>Slip Spindle:</b> 8 5⁄8 in. (219 mm) pin
Drill Rig, Wrench & Misc.	<b>Wrench Design:</b> Full Wrench travel <b>Clamp/Grip Range:</b> 2 ¾ in. - 10 ¾ in. (70-273 mm) <b>Max. Breakout Torque:</b> 154,000 ft. lbs. (209,460 Nm) <b>Max. Makeup Torque:</b> 101,700 ft. lbs. (138,312 Nm) <b>Wrench Assembly Motor:</b> (2) Hydraulic LSHT, 12 CIR <b>Wrench Assembly Brake:</b> (1) Spring Applied / Hydraulic release <b>Planetary Gearbox:</b> (2) SGL <b>Hydraulic Wrench Cylinder:</b> (6) 8 in. Bore x 3 in. stroke  <b>Drill Angle:</b> 10° to 18° <b>Drill Pipe Length:</b> Range II, 30 ft (9.1 m)	<b>Wrench Design:</b> Full Wrench travel <b>Clamp/Grip Range:</b> 3 ½ in. - 10 ½ in. (89-267 mm) O.D. <b>Max. Breakout Torque:</b> 220,000 ft. lbs. (298,280 Nm) <b>Max. Makeup Torque:</b> 100,183 ft. lbs. (138,252 Nm)  <b>Processor Controls:</b> Sauer Danfoss micro processor controls w/ touch screen <b>Drill Angle:</b> 10° to 18° <b>Drill Pipe:</b> Range II, 30 ft (9.1 m) <b>Pipe Capacity:</b> 4 <b>Optional Pipe Loader</b>	<b>Wrench Design</b> Full Wrench travel <b>Clamp/Grip Range:</b> 3 ½ in. - 10 ½ in. (89-267 mm) O.D. <b>Max. Breakout Torque:</b> 230,000 ft. lbs. (312,000 Nm) <b>Max. Makeup Torque:</b> 100,183 ft. lbs. (138,252 Nm) <b>Wrench Assembly Motor:</b> (2) Hydraulic LSHT, 12.5 CIR <b>Wrench Assembly Brake:</b> (1) Spring Applied / Hydraulic release  <b>Drill Angle:</b> 10° to 18° <b>Drill Pipe Length:</b> Range II, 34 ft. (10.4 m) <b>Optional Pipe Loader</b>

# Performance Specifications

\*\*Note: All product performance specifications, components, weights, dimensions and other related information are subject to change without notice from the manufacturer.

	DD-440T	DD-660RS	DD-1100RS
Dimensions	Length: 49 ft. (14.9 m) Width: 8 ft. 2 in. (2.5 m) Height: 11 ft. 8 in. (3.6 m)	Max. Length: 64 ft. 10 in. (19.5 m) Max. Width: 8 ft. 2 in. (2.5 m) Max. Height (transport): 12 ft. 1 in. (3.68 m)	Transport Length: 64 ft. 10 in. (19.5 m) Transport Width: 8 ft. 2 in. (2.5 m) Height: working: 19 ft. (5.8 m) transport: 11 ft. 10 in. (3.04 m)
Weights	Total Weight: 95,400 lbs. (43,273 kg) Total Weight w/o Wrenches: 87,600 lbs. (39,785 kg)	Travel Weight: 100,300 lbs. (47,763 kg)	Total Weight w/o Wrenches: 112,580 lbs. (51,065 kg) without wrench
Included with Base Unit	Es!Lok Entry / Exit Side Lockout, 1 mile (1.6 km) range Wiggle Steer® Free Standing Operator's Console with Pressure Gauges Safety System package with ZapAlert Operator's Manual and other unit support materials	Run On One Technology System (ROOTS) Es!Lok Entry / Exit Side Lockout, 1 mile (1.6 km) range Wiggle Steer® Free Standing Operator's Console with Pressure Gauges Safety System package with ZapAlert Operator's Manual and other unit support materials	Run On One Technology System (ROOTS) Es!Lok Entry / Exit Side Lockout, 1 mile (1.6 km) range Wiggle Steer® Free Standing Operator's Console with Pressure Gauges Safety System package with ZapAlert Operator's Manual and other unit support materials

	Single Power Pack
Dimensions	Length: 19 ft. 8 in. (6.03 m) Width: 8 ft. (2.4 m) Height: 9 ft. 5 in. (2.9 m)
Weights	Weight: 35,500 lbs. (16,103 kg)



# Premium Options



8' x 12'

## ISO-Style Driller's Cabin

Rugged, construction-grade reliability! Designed with ISO corners for easy loading and unloading. 12-gauge corrugated siding with thermo pane windows, ergonomically configured interior 6-way adjustable tension chair, climate controls and abundant work surfaces. Can be ordered in 50 Hz or 60 Hz.



8' x 20'

## ISO-Style Power Pack Trailer

Custom made for your American Augers power units. This trailer features ISO corners to pin your units directly to the trailer. Trailer dimensions are 51 ft. x 96 in. (15.5 x 2.4 m)



## QUIET-PAK

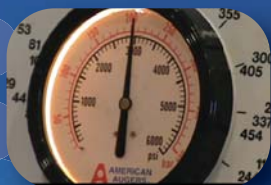
Power unit sound deadening enclosure. Made up of removable panels with 2" of acoustical absorbing material keeping dB's under control. 3 lockable doors for easy access.

## Secondary Power Pack

The most important option you can purchase for your drill!

### ROOTS - Run On One Technology System

The drill can operate on one or both units. This allows you to do maintenance on one unit without experiencing any down time.



## Certified Pullback Test

A Guarantee of exactly what YOUR machine can pull.



## Pipe Loader

Keep your crew safe!

- Stages 4 rods
- Connected to the thrust frame with pins for easy attachment and removal
- Can handle different sized drill pipe
- Processor controlled extension cylinders for accurate and adjustable rod positioning