

EAST GOSHEN MUNICIPAL AUTHORITY

February 9, 2015

1. CALL TO ORDER/PLEDGE OF ALLEGIANCE/MOMENT OF SILENCE
a. Ask if anyone will be taping the meeting?

2. CHAIRMAN'S REPORT/OTHER MEMBERS REPORTS

3. SEWER REPORTS

- a. Director of Public Works Report
- b. Pennoni Engineer's Report
- c. Big Fish Environmental Inc. Report with DMR's
- d. East Goshen Township Flows

3. APPROVAL OF MINUTES

- a. January 12, 2015

4. APPROVAL OF INVOICES

a. Pennoni	Invoice #623589	\$5,300.00
b. Pennoni	Invoice #623591	\$ 82.50
c. Pennoni	Invoice #623592	\$ 565.00
d. Pennoni	Invoice #623593	\$ 464.00
e. Pennoni	Invoice #623594	\$ 661.25
f. Pennoni	Invoice #623595	\$2,053.75
g. Pennoni	Invoice #623596	\$1,827.50

5. LIAISON REPORTS

6. FINANCIAL REPORTS

- a. January 2015 Report

7. OLD BUSINESS

8. GOALS

- a. Submit an article for each newsletter – Due date for newsletter
Need by 1/30/15 – Jack - **Completed**
Need by 5/1/15
Need by 8/31/15
Need by 10/30/15

b. Obtain construction permits for the Reservoir Road Pump Station – December 31, 2015 2/6 – Test boring done, meeting with Mike to review preliminary site plan and discuss control options.

c. Attend West Goshen Meetings quarterly – more often if needed.

1st Quarter

2nd Quarter

3rd Quarter

4th Quarter

d. Respond to capacity requests in 45 days or less.

e. Continue to implement I & I Plan

f. Operate RCSTP in compliance with NPDES Permit

9. NEW BUSINESS

a. Comp Plan Task Force meeting conflict

10. CAPACITY REQUESTS

11. ANY OTHER MATTER

12. CORRESPONDENCE AND REPORTS OF INTEREST

13. PUBLIC COMMENT

14. ADJOURNMENT

EAST GOSHEN MUNICIPAL AUTHORITY
EAST GOSHEN TOWNSHIP
1580 PAOLI PIKE, WEST CHESTER, PA 19380-6199

February 4, 2015

To: Municipal Authority
From: Mark Miller
Re: January 2015 Monthly Report

Meters: All meters were read on a daily basis. I met with John Scott with regards to converting the shared meters over to remote monitoring. The total cost is \$8000 dollars which would be split in half. This will be a significant savings to the township.

C.C. Collection: The pumping stations were visited on a daily basis. With no problems to report.

MGK completed the new rail system at the Barkway Pump Station, it is a great improvement.

We were notified of two lateral back-ups for the month of January, both were cleared.

R.C. Collection: Pump Stations were visited on a daily basis with no problems to report.

R.C. Plant: No problems to report.

Alarms: We responded to 17 alarms for January.

PA One Calls: We received 57 PA One calls since January.



MEMORANDUM

TO: East Goshen Municipal Authority Board
Rick Smith, Township Manager

FROM: Michael Ellis, P.E.
Authority Engineer

DATE: February 6, 2015

SUBJECT: Engineer's Report

Invoices

- Invoices with summaries are provided under separate cover.

Reservoir Road Pump Station

- We attended a tour of the new Mill Lane Pump Station in East Whiteland Township with the PW staff to evaluate scoping preferences for the Reservoir Road Pump Station.
- Two geotechnical borings at the proposed pump station site were performed on January 15. We observed the borings, and prepared a geotechnical report and boring logs which will be submitted to the Township. Bedrock was encountered at a depth of 22' in both borings, although there were shallower layers of "rippable" material.
- We prepared a 1st draft of a concept design consisting of: a pump station site sketch plan including conceptual diversion details and diversion piping profiles, a written outline of pump station controls and critical features, and a ballpark construction cost estimate. We met with Rick Smith and Mark Miller to review the 1st draft. A 2nd draft of the site plan is being prepared and will be presented to the Municipal Authority at the February 9th meeting.
- Once the concept scope is agreed upon, a permit pre-application meeting with PADEP will be set up, likely in March.
- The existing conditions field survey work is scheduled to commence the week of February 23 and will take 2-3 weeks to complete.

Chapter 94 Reports

- We initiated work on the 2014 Chapter 94 Reports. We anticipate submitting drafts of the reports to the Township for review by early March.

Lockwood Chase STP Groundwater Monitoring

The LCSTP Closure Plan approval from PADEP required that groundwater monitoring at the LCSTP site continue on a quarterly basis for five years following the plant closure. Reports must be submitted to PADEP.

As requested, we reviewed the 2013 and 2014 Annual Groundwater Monitoring Reports prepared by Brickhouse Environmental. The quarterly monitoring results have been reviewed to identify any impacts to groundwater quality as a result of the closure of the LCSTP. A summary of our review follows:

- Quarterly testing of the ground monitoring wells is a condition of PADEP Permit No. 1580430 Amendment #1, dated December 28, 2010, and must be performed in accordance with the LCSTP Closure Plan that was approved by PADEP on December 8, 2011. Brickhouse began the required quarterly monitoring of wells MW#3 and MW#4 on March 29, 2012. Samples have not been collected from wells MW#1 and MW#5 because these wells have been dry at the time of Brickhouse's sampling events. Similarly, MW#4 was not sampled in the months of June, September, and December of 2012 because it was also dry.
- The analytical data in the reports do not indicate any water quality impacts between 2012-2014 as a result of the LCSTP operation or its decommissioning. The results of the quarterly monitoring were compared to the EPA's Maximum Contaminant Limits (MCLs) for drinking water, as defined by the Safe Drinking Water Act. The majority of the target compounds did not exceed the MCLs or the laboratory method detection limits in the groundwater samples, with the exception of Nitrate-Nitrogen and Fecal Coliform in a few instances.
 - Nitrate-Nitrogen concentration in MW#4 was 11.0 mg/L in March 2012 before the plant closure. It has fluctuated from 5.8 to 13.7 mg/L since the plant was closed with no discernable trend. The MCL is 10.0 mg/L.
 - Fecal Coliform has been detected on occasion, however this may be a result of the close proximity to surface waters and other groundwater conditions not associated with the plant. Fecal Coliform has not been detected in the month of March sampling since 2012. It has been highest in the summer months of 2013 and 2014. Since it has been at non-detectable levels since the plant was closed, it does not appear the plant closure is causing the Fecal Coliform presence.
- The report states that testing is planned to continue through December 2015, at which point the amended permit will expire and the wells will be abandoned and monitoring discontinued. However, the approved STP Closure Plan stated that quarterly groundwater monitoring will be conducted for five years following final grading of the treatment plant site to ensure sludge is not causing an adverse impact on groundwater. The plant was demolished and the lagoons were filled in fall 2012. The monitoring therefore needs to continue through the end of 2017.

Lockwood Chase STP Closure NPDES Permit N.O.T.

- We are coordinating with the Township to perform a site visit to the former LCSTP site to evaluate the consistency of as-built conditions with the permit plans, so that the

EGMA 1501

NPDES Permit Notice of Termination paperwork can be finalized and submitted to the Chester County Conservation District.

Hershey's Mill PS and Marydell PS Diversions

- The 2-year Maintenance Bonds on the Hershey's Mill PS and Marydell PS Diversions expire on July and August respectively. We recommend warranty inspections be performed by May.

Hershey's Mill PS Muffin Monster

- We notified PADEP that the comminutor has been installed in the pump station for their field evaluation as required by the permit.



Monthly Operations Report: January 2015

Executive Summary

The Ridley Creek sewage treatment plant outfall 001 achieved compliance with the NPDES discharge permit. There was no discharge to Applebrook, which is identified as outfall 002. Chemical usage utilized for total phosphorus removal, pH and total alkalinity remained consistent with previous months. No mechanical or operational issues were observed during operation of the sludge dewatering equipment. The variable speed drives for influent pump numbers 2 and 3 failed during the month and were replaced by Lenni Electric. The facility was functioning intended at the close of the month.

Treatment Process Operation

During December 2014, there were no exceedances of the final effluent discharge limitations for outfall 001. The total phosphorus monthly average concentration of 0.15 mg/L as compared to the permitted limitation of 0.50 mg/L. Table 1 illustrates the final effluent composite sample data reported for the December 2014 eDMR. During the month, the final effluent total phosphorus concentration discharged ranged from 0.10 mg/L to 0.24 mg/L. The aluminum sulfate daily average remained consistent during December at 74.0 gpd.

Table 1

December 2014 - Final Effluent - Out Fall 001											
NPDES Permit Discharge Limitations	Flow	CBOD ₅		TSS		NH ₄ -N		Phosphorus, Total , mg/L		Fecal Coliform	
	MGD Average	mg/L	lbs/ month	mg/L	lbs/ month	mg/L	lbs/ month	mg/L	lbs/ month	Geo Mean	Geo Mean
	0.75	20	125	21	131	7	44	0.5	3	200	1,000
	Instantaneous Maximum	40		42							
Sample Date											
December 2, 2014	0.299	2.0	5.0	4	10	0.182	0.45	0.12	0.30	1	0.0000
December 9, 2014	0.311	3.9	10.1	3	8	0.114	0.30	0.14	0.36	1	0.0000
December 16, 2014	0.342	2.7	7.7	4	11	0.345	0.98	0.15	0.43	1	0.0000
December 23, 2014	0.319	2.4	6.4	4	11	0.10	0.27	0.24	0.64	1	0.0000
December 30, 2014	0.396	2.0	6.6	5	17	0.19	0.62	0.10	0.33	1	0.0000
Average	0.333	2.6	7.2	4	11	0.186	0.52	0.15	0.41	1	0.0000
Minimum	0.299	2.0	5.0	3	8	0.100	0.27	0.10	0.30	1	0.0000
Maximum	0.396	3.9	10.1	5	17	0.345	0.98	0.24	0.64	1	0.0000



There was no discharge from Outfall 002 to Applebrook during December 2014.

Table 2

December 2014 - Influent Wastewater											
Design Basis	Flow	BOD ₅		TSS		NH ₄ -N		TKN, mg/L		Phosphorus, Total, mg/L	
		mg/L	lbs/day	mg/L	lbs/day	mg/L	lbs/day	mg/L	lbs/day	mg/L	lbs/day
	MGD Average	335	2,098	320	2,001	32	200	48	301	9.1	57
Sample Date											
December 2, 2014	0.404	258	869	186	626	31.8	107	51.5	173	5.3	18
December 9, 2014	0.371	295	993	190	640	27.9	94	39.1	132	4.1	14
December 16, 2014	0.423	136	458	74	249	33.7	113	41.9	141	4.1	14
December 23, 2014	0.410	242	815	173	583	35.2	119	40.2	135	4.7	16
December 30, 2014	0.436	207	697	359	1,209	40.7	137	55.2	186	5.5	19
Average	0.409	228	784	196	525	33.9	108	45.6	145	4.7	15
Minimum	0.371	136	458	74	249	27.9	94	39.1	132	4.1	14
Maximum	0.436	295	993	359	640	40.7	119	55.2	173	5.5	18

Table 2 illustrates the influent wastewater pollutant loadings for December 2014. The influent loadings remained within the treatment facility design loadings.

Table 3 presents the available Outfall 001 final effluent data for the month of January 2015. There are no anticipated exceedances of the permitted limitations for the month. Split sampling of the composite sample collected by Applied Laboratory Services (ALS) is ongoing for comparative analysis and daily results.



Table 3

January 2015 - Final Effluent - Out Fall 001											
NPDES Permit Discharge Limitations	Flow	CBOD ₅		TSS		NH ₄ -N		Phosphorus, Total , mg/L		Fecal Coliform	
	MGD Average	mg/L	lbs/ month	mg/L	lbs/ month	mg/L	lbs/ month	mg/L	lbs/ month	Geo Mean	Geo Mean
	0.75	20	125	21	131	7	44	0.5	3	200	1,000
	Instantaneous Maximum	40		42							
Sample Date											
January 6, 2015	0.404	3.6	12.1	5	17	0.731	2.46	0.21	0.71	1	0.0000
January 13, 2015	0.358	2.6	7.8	4	12	0.906	2.71	0.27	0.81	1	0.0000
January 20, 2015	0.919	2.2	16.9	6	46	0.113	0.87	0.10	0.77	2	0.3010
January 28, 2015	0.372	2.00	6.2			0.37	1.15	0.23	0.71	1	0.0000
Average	0.513	2.6	10.7	5	25	0.531	1.80	0.20	0.75	1	0.0753
Minimum	0.358	2.0	6.2	4	12	0.113	0.87	0.10	0.71	1	0.0000
Maximum	0.919	3.6	16.9	6	46	0.906	2.71	0.27	0.81	2	0.3010

During January 2015, there was no discharge of treated effluent to Applebrook. The pump has been placed in the off mode during the winter months.

The influent wastewater pollutant concentrations and loading entering the wastewater treatment facility remained within the design concentrations and loadings. Composite samples are collected at the influent doghouse manhole and influent wet well. The influent flow meter reading is collected from the influent flow meter located prior to the Screening Building, excluding the internal recycle flows.

Table 4 presents the available pollutant data for the influent wastewater collected at the doghouse manhole during January 2015.



Table 4

January 2015 - Influent Wastewater											
Design Basis	Flow	BOD ₅		TSS		NH ₄ -N		TKN, mg/L		Phosphorus, Total, mg/L	
		mg/L	lbs/day	mg/L	lbs/day	mg/L	lbs/day	mg/L	lbs/day	mg/L	lbs/day
	MGD Average	335	2,098	320	2,001	32	200	48	301	9.1	57
Sample Date											
January 6, 2015	0.446	162	603	71	264	32.6	121	44.0	164	4.6	17
January 13, 2015	0.398	188	699	149	554	27.1	101	40.2	150	4.7	17
January 20, 2015	0.452	153	569	65	242	32.8	122	36.3	135	4.3	16
January 28, 2015	0.436	111.0	413	82.0	305	34.2	127	42.1	157	4.7	17
Average	0.433	154	571	92	341	31.7	118	40.7	151	4.6	17
Minimum	0.398	111	413	65	242	27.1	101	36.3	135	4.3	16
Maximum	0.452	188	699	149	554	34.2	127	44.0	164	4.7	17

Sequencing batch reactors (SBRs) numbered 1, 3 and 4 were in service during December and January.

Process monitoring of each SBR included ammonia as N, nitrite as N, Nitrate as N, COD, SSV, MLSS and total phosphorus. Foam concentrations increased slightly during November and December. The average coverage of the surface area was estimated at 50%. Increased sludge wasting rates were maintained to manage the MLSS concentrations and F:M ratio within the desired goals. Daily monitoring of the influent and final effluent 24-hour composites samples for total phosphorus is ongoing. Daily analysis of the final effluent flow equalization grab sample is total phosphorus is ongoing. Sample collection and analysis of the influent wastewater collected at the influent pump station wet well is ongoing.

Addition of aluminum sulfate solution to the SBRs to assist with phosphorus removal continued. The volume of aluminum sulfate solution to the SBRs remained consistent at a daily average of 74.0 gpd during January and December. During January, the soda ash daily addition average remained consistent at 435 lbs. per day. Soda ash assists towards maintaining SBR pH concentrations above 7.0 standard units and assists to replenish alkalinity consumed during the nitrification process and aluminum sulfate solution addition.



SBR No. 2 remains out of service as a treatment unit. Minor repairs will be scheduled as weather conditions permit.

Solids Dewatering and Disposal: January 2015

Sludge Dewatering Summary	
Gallons of sludge dewatered	240,518
Average Dewatered Total Solids, %	NA
Wet Tons	NA
Dry Tons	NA
Number of dumpsters	4

**Sixteen (16) days of centrifuge operation*

Flow data:

January 2015			
Flow Meter Location	Total Volume for Month, MG	Average Daily Flow, gpd	Daily Maximum Flow, gpd
Influent Wastewater to Screening Building*	13.877	447,642	780,300
Influent Wastewater to SBRs	13.907	448,625	633,856
Internal Recycle	0.399	12,894	54,008
Treated Effluent to Disc Filters	13.344	430,439	685,216
Final Effluent Discharge	12.520	403,871	919,000
Applebrook Golf Course	0	0	0

**The final effluent daily maximum flow of 919,000 is attributed to the result of an erroneous level meter reading. The transducer and v-notch weir were cleaned and the subsequent flow measurements recorded were within the anticipated range.*

Chemical Usage:

January 2015		
Chemical	Daily Average	Total Monthly
Soda Ash	437	13,150
Aluminum Sulfate solution	73.3	2,273
Polymer (centrifuge)	0.84	13.44

**Sixteen (16) days of centrifuge operation*



During January, sludge wasting to the sludge holding tanks and decanting of the sludge holding tanks was ongoing. Process monitoring included pH, total alkalinity and total solids.

Sludge holding tank No. 1 was in service. The level at the beginning of January was 13.82 feet and the level at the end of the month was 9.76 feet. The initial total solids concentration was 0.59% decreasing to 1.34% at the end of the month. The average pH concentration was 7.96 S.U. 57,600 gallons of supernatant were decanted during the month. A total of 200 pounds of soda ash were added.

Sludge holding tank No. 2 was in service. The level at the beginning of the month was 7.52 feet and the level at the end was 8.82. The initial total solids concentration was 0.85% total solids increasing to 0.84% at the end of the month. The average pH concentration was 7.52 S.U. and 300 pounds of soda ash was added. Zero gallons of supernatant were decanted.

Significant Storm/Hydraulic Loading Events

During January, there were three storm events resulting in daily precipitation amounts greater than 0.5 inches measured during a 24 hour period. A total of 3.43 inches of rainfall and 4.0 inches of snow were measured at the facility during January. Daily maximum amounts were 1.01 and 1.00 inches, measured on January 3rd and 18th, respectively. On January 17th through the 18th, a total of 1.39 inches were measured. The influent flows increased from 414,470 gpd to 780,300 gpd.

Figure 1 illustrates a flow rate range of 108% to 118% of the SBR design hydraulic loading for a sustained period of 15 hours. The elevated flow rates resulted in filled settle decants for several continuous hours.

Figure 2 illustrates a maximum flow rate of 217% of the SBR design hydraulic loading for a period of approximately 2-1/2 hours occurring on January 18th.

Figure 3 illustrates a sustained low rate of 92% of the SBR design hydraulic loading for a period of approximately 11 hours.

Figure 1 - January 12th SBR Influent Flow

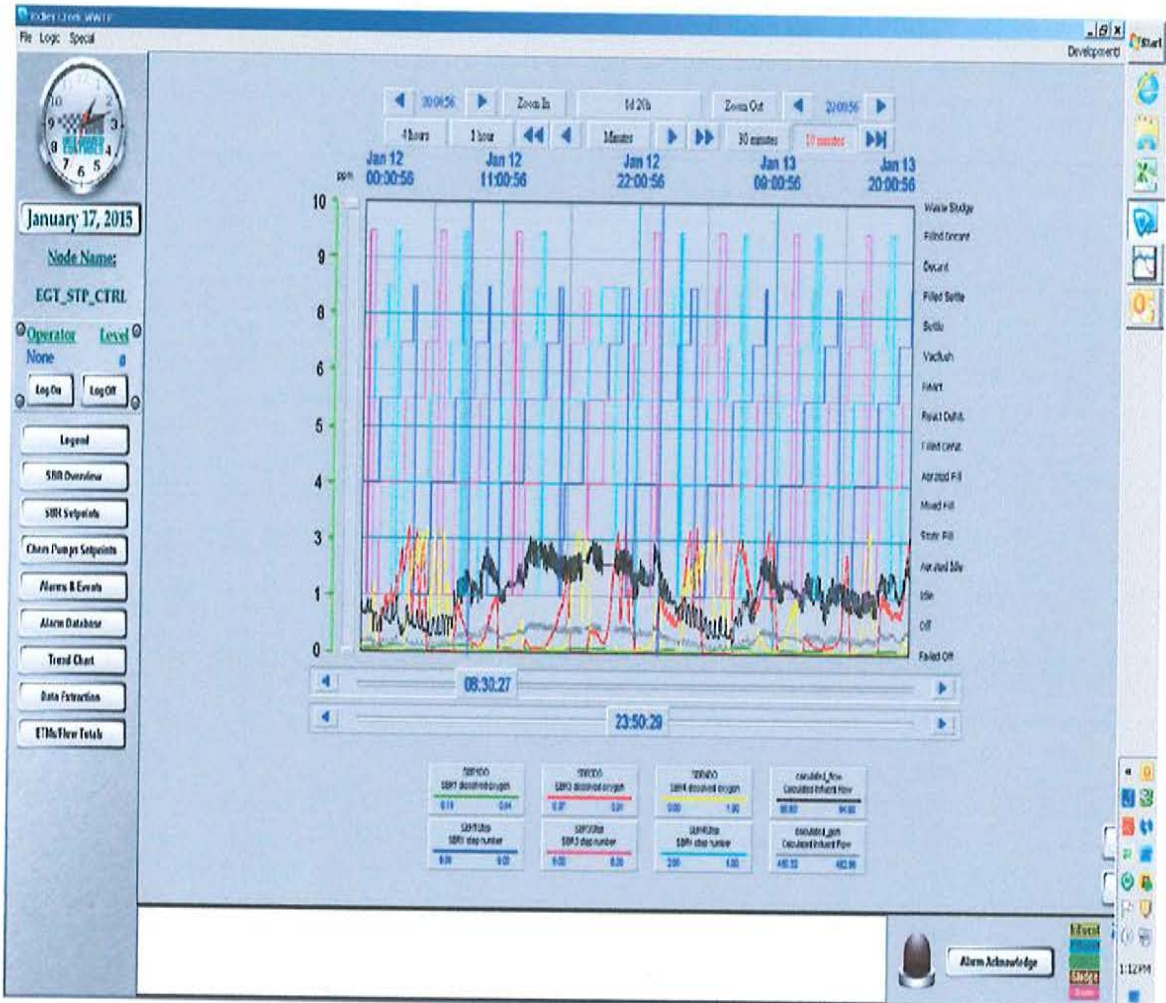


Figure 2 - January 18th Peak Flow to SBRs

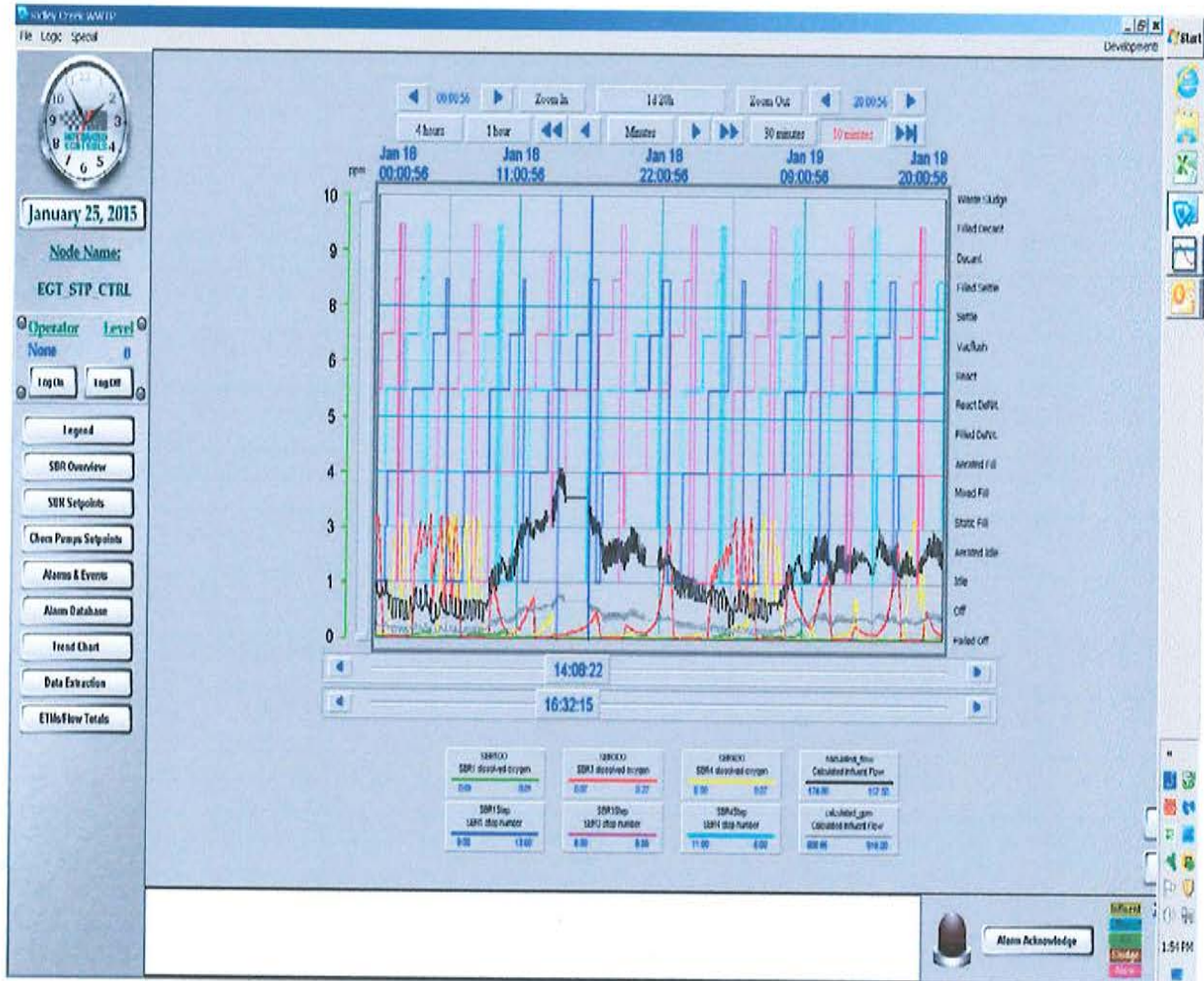
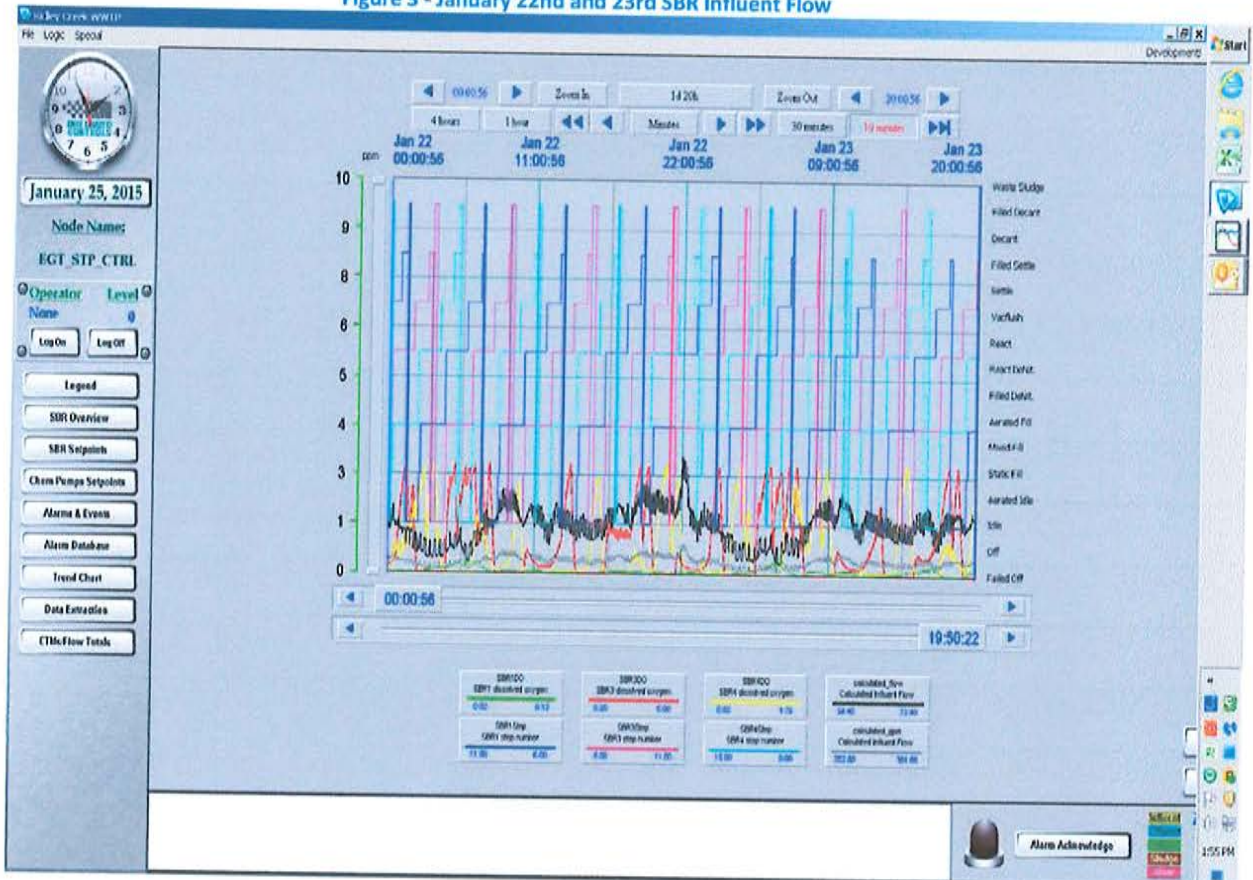


Figure 3 - January 22nd and 23rd SBR Influent Flow



Minor Repairs and Preventative Maintenance

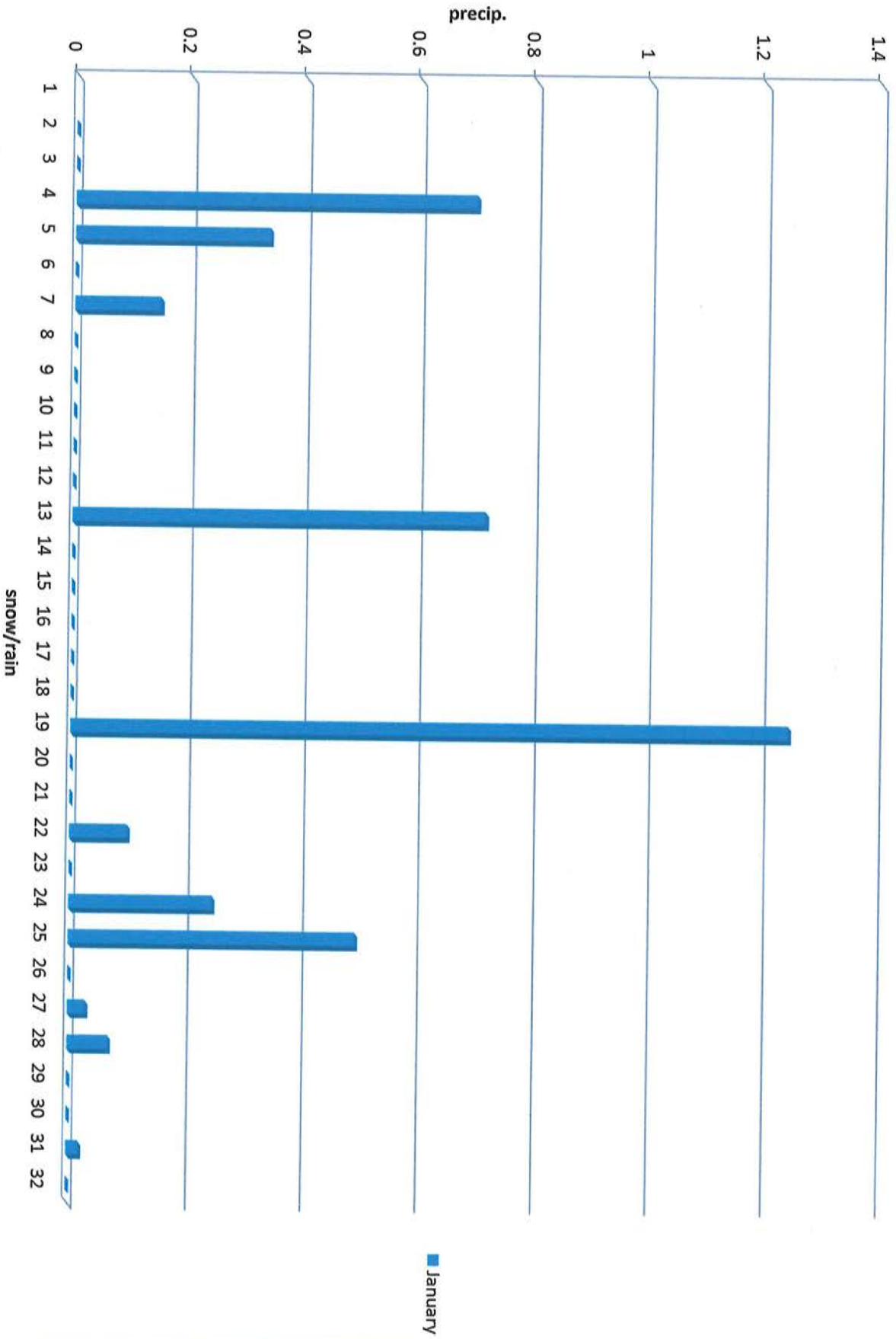
Replaced inlet air filters for the sludge holding tank and post flow equalization basin blowers.

Replaced variable speed drives for influent pumps 2 and 3.

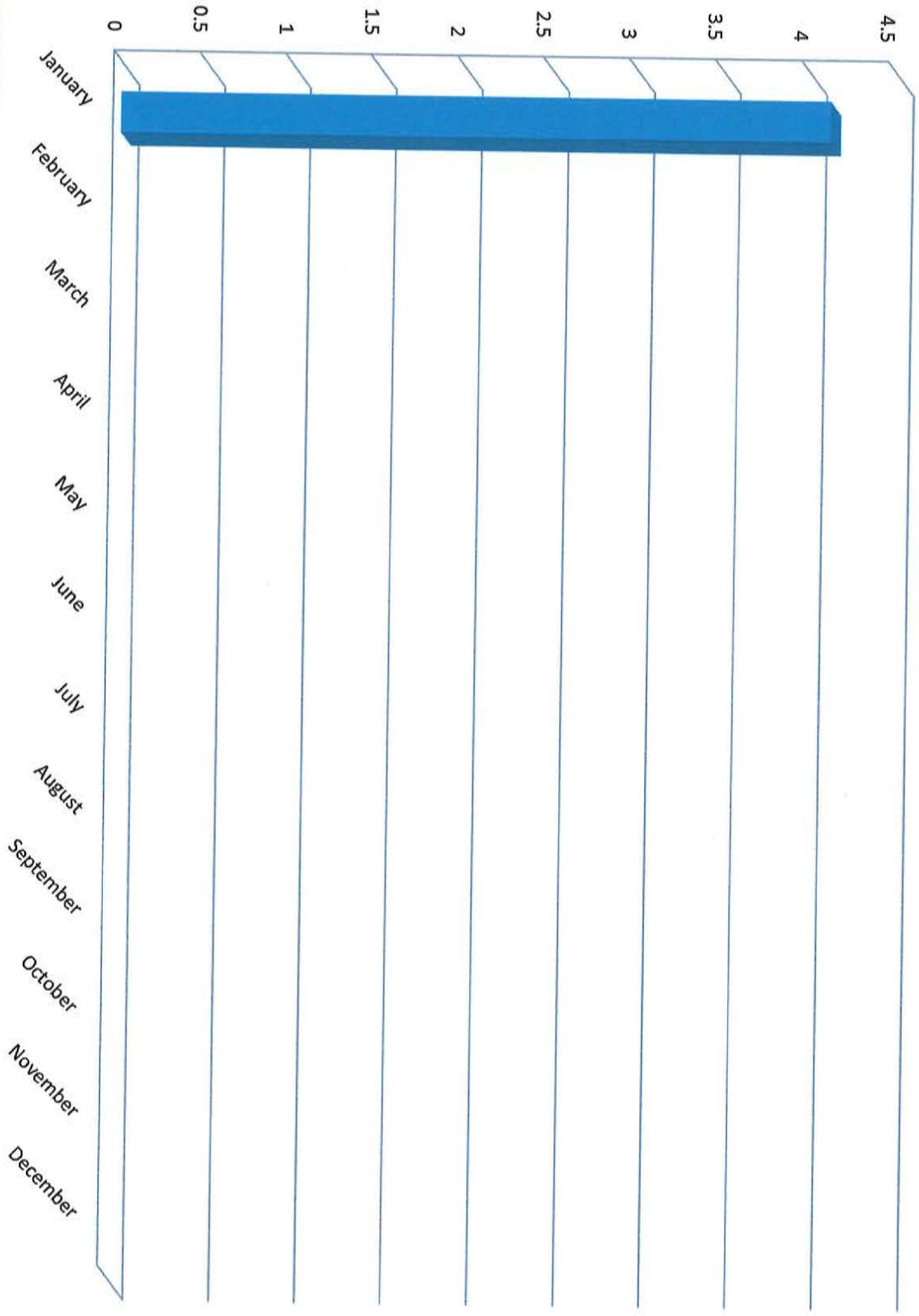
2015 January 4TH QUARTER- METERS FROM WEST GOSHEN - CC COLLECTION

DATE	HERSHEY'S MILL			ASHBRIDGE			HICKS METER			RESERVOIR			BARKWAY		
	READING	GPD	READING	GPD	READING	GPD	READING	GPD	READING	GPD	READING	GPD			
1/1/2015															
1/2/2015															
1/3/2015															
1/4/2015															
1/5/2015	26,754,636	707,492	2,037,245	63,940	17,862,080	123,804	63,436,221	661,398	3,468,807			12,802			
1/6/2015															
1/7/2015	26,890,456	679,100	2,038,413	58,400	17,916,986	274,580	63,582,628	732,035	3,471,038			11,155			
1/8/2015	26,954,102	636,460	2,038,948	53,500	17,941,984	249,880	63,649,428	668,000	3,472,073			10,350			
1/9/2015	27,020,412	663,100	2,039,513	56,500	17,968,600	266,160	63,719,359	699,310	3,473,276			12,030			
1/10/2015															
1/11/2015															
1/12/2015	27,229,278	696,220	2,041,313	60,000	18,039,104	235,013	63,912,019	642,200	3,476,683			11,357			
1/13/2015	27,297,596	683,180	2,041,959	64,600	18,062,566	234,520	63,991,353	793,340	3,477,842			11,590			
1/14/2015	27,360,396	628,000	2,042,577	61,800	18,088,514	259,580	64,061,235	698,820	3,478,899			10,570			
1/15/2015	27,425,218	648,220	2,043,140	56,300	18,114,586	260,720	64,131,115	698,800	3,479,964			10,650			
1/16/2015	27,487,104	618,860	2,043,686	54,600	18,138,754	241,680	64,196,279	651,640	3,480,948			9,840			
1/17/2015															
1/18/2015															
1/19/2015															
1/20/2015	27,776,812	724,270	2,046,657	74,275	18,236,698	244,860	64,490,711	736,080	3,485,893			12,363			
1/21/2015	27,843,070	662,580	2,047,225	56,800	18,263,111	264,130	64,562,560	718,480	3,486,926			10,330			
1/22/2015	27,909,638	665,680	2,047,802	57,700	18,290,092	269,810	64,632,660	701,000	3,488,037			11,110			
1/23/2015	27,973,456	638,180	2,048,371	56,900	18,316,330	262,380	64,701,760	691,000	3,489,047			10,100			
1/24/2015															
1/25/2015															
1/26/2015	28,186,508	710,173	2,050,300	64,300	18,387,554	237,413	64,917,081	717,737	3,492,783			12,453			
1/27/2015	#####	767,600	2,050,981	68,100	18,416,108	285,540	64,996,541	794,600	3,494,124			13,410			
1/28/2015	28,331,568	683,000	2,051,559	57,800	18,440,244	241,360	65,064,927	683,860	3,495,252			11,280			
1/29/2015	28,398,334	667,660	2,052,119	56,000	18,469,046	288,020	65,137,347	724,200	3,496,322			10,700			
1/30/2015	28,464,632	662,980	2,052,732	61,300	18,497,200	281,540	65,207,965	706,180	3,497,348			10,260			
1/31/2015															
		674,598		60,156		251,166		706,594				11,242			
		12,142,755		1,082,815		4,520,991		12,718,690				202,350			
		18		18		18		18				18			

January Precip. 4.13 - 2015

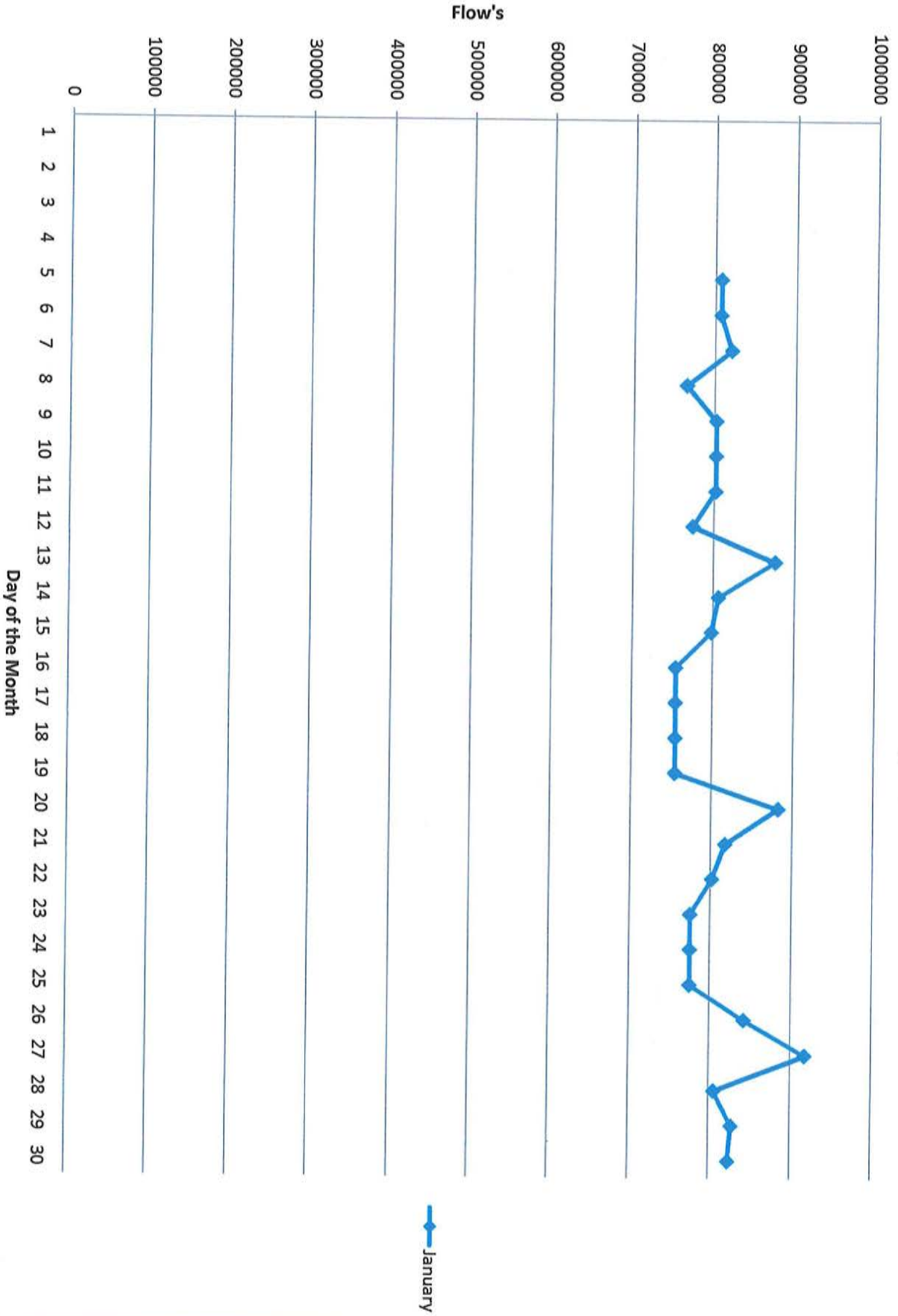


2015 Monthly Precipitation

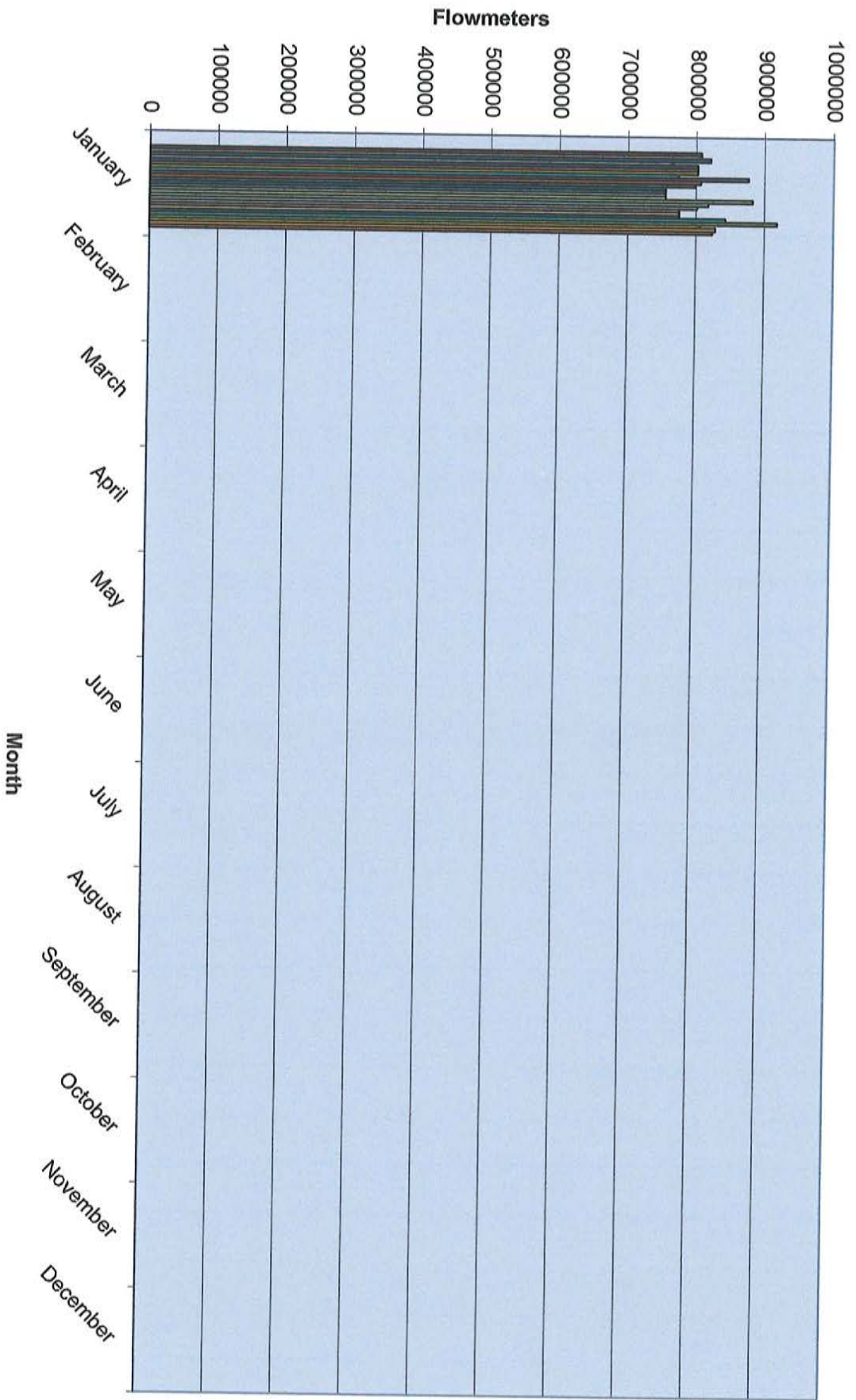


■ Series1

Flowmeters January 2015



Monthly Totals 2015 Jan-Dec



**EAST GOSHEN TOWNSHIP MUNICIPAL AUTHORITY
MEETING MINUTES
January 12, 2015**

The East Goshen Township Municipal Authority held their regular public meeting on Monday, January 12, 2015 at 6:00 pm at the East Goshen Township building. Members in attendance were: Chairman Jack Yahraes, Kevin Cummings, and Dana Pizarro. Also in attendance were: Rick Smith (Township Manager), Carmen Battavio (Township Supervisor), Scott Towler (Big Fish), Mike Ellis (Pennoni), Patrick McKenna (Attorney) and Jessica Wiesak (Attorney).

COMMON ACRONYMS:

<i>BFES – Big Fish Environmental Services</i>	<i>MA- Municipal Authority</i>
<i>BOS – Board of Supervisors</i>	<i>NPDES – National Pollutant Discharge Elimination System</i>
<i>CB – Conservancy Board</i>	<i>PC – Planning Commission</i>
<i>DEP – Department of Environmental Protection</i>	<i>PM – Prevention Maintenance</i>
<i>EPA – Environmental protection Agency</i>	<i>PR – Park & Recreation Board</i>
<i>HC – Historical Commission</i>	<i>RCSTP – Ridley Creek Sewer Treatment Plant</i>
<i>I&I – Inflow & Infiltration</i>	<i>SBR – Sequencing Batch Reactor</i>
<i>LCSTP – Lockwood Chase Sewer Treatment Plant</i>	<i>SSO – Sanitary System Overflow</i>
	<i>WAS – Waste Activated Sludge</i>

Call to Order & Pledge of Allegiance

Jack called the meeting to order at 6:00 pm and led those present in the Pledge of Allegiance. There was a moment of silence to remember the troops and all veterans. Jack asked if anyone would be recording the meeting and there was no response.

Chairman’s Report/Other Members’ Reports

1. Reorganization - The officers for 2015 assigned by rotation are:
 - Kevin Cummings - Chairman
 - Dana Pizarro – Vice Chairman
 - Ed McAssey – Secretary
 - Fran Beck – Treasurer
 - Jack Yahraes – Asst. Secretary/Treasurer
2. Kevin reported that he presented the goals and objectives for 2015 at the Annual ABC meeting on Saturday, January 10, 2015. After the meeting he went on the 2 hour bus tour of the Township. They saw where the major parcels are that can be developed and discussed possible uses.
3. Kevin mentioned that in the latest MA magazine there is an article about underground cameras and storm water management.

Sewer Reports

1. Director of Public Works

Mark Miller reported for December 2014:

Meters: Were read on a daily basis. The temporary meters were visited once a week. No problems to report.

C.C. Collection: The pump stations were visited on a daily basis, no problems to report. We were notified of three lateral backups. We responded to all three and cleared the blockage. Once we cleared the blockage we televised the line to make sure there were no

tree roots in the line. We were asked to repair 5 lateral caps that were sheared off by lawn mowers. We raised the cleanout pipes and installed new caps.

R.C.Collection: The Hunt Country Pump Station was visited on a daily basis with no problems to report.

R.C. Plant: No problems to report.

Alarms: We responded to 19 alarms for the month of December.

PA One Calls: We received 43 PA One calls in December.

2. Pennoni Engineer's Report

Mike Ellis gave the following report:

Invoices: Invoices with summaries are provided under separate cover.

Reservoir Rd Pump Station:

1. The Act 537 Plan Update was approved by PADEP on January 7, 2015.
2. We are initiating work on the pump station concept design. We expect to have a draft concept design of the diversion, a sketch plan of the pump station site, and an outline of the controls concept completed by the Municipal Authority meeting on February 9. We would like to schedule a review meeting with all interested parties (Township staff, RCSTP operator, ect.) the following week.
3. Geotechnical investigative drilling at the proposed pump station site is scheduled for Thursday, January 15, weather permitting.
4. The existing conditions field survey work is expected to commence by mid-February

Semi-Annual I&I Report – We analyzed December 2014 portable meter data, and we finalized and submitted the semi-annual I&I report that had been originally drafted in October 2014. The full report was not completed in October due to numerous metering issues that needed to be resolved.

Chapter 94 Reports – We will initiate work on the 2014 Chapter 94 Reports the week of January 12.

Mike reviewed the Semi-Annual Sewer System Status Report #12 and provided a map of East Goshen Township showing the location of the portable meters.

3. Big Fish Environmental Services – Scott reported that the plant was in compliance for November & December. The total Phosphorous is less the .5. They had to reprogram an allen pump. They average 3 million gallons per month of sludge. In the winter they use more sodash. He is getting pricing for decanter tubes for the SBR2. There were no minor repairs or preventative maintenance needed.

Approval of Minutes

Dana moved to accept the minutes of December 8, 2014. Jack seconded the motion. The motion passed unanimously.

Approval of Invoices

1. Dana moved to approve payment of the following Pennoni invoices:

- a. Pennoni #618400 \$ 137.50
- b. Pennoni #618401 \$ 612.50

Jack seconded the motion. The motion passed unanimously.

2. Jack moved to approve payment of the Gawthrop Invoice #126447 for \$400.00. Dana seconded the motion. The motion passed unanimously.

Liaison Reports

Board of Supervisors – Carmen reported that the first meeting of the new Comprehensive Plan Task Force is at 7:00 tonight. Next Tuesday the BOS will interview candidates for the ABCs.

Financial Reports

Jon Altshul provided the following report:

In December, the Municipal Authority recorded \$21,734 in revenues, primarily from Goshen Meadows tapping fees, and \$35,678 in expenses including \$8,043 for administrative overhead and \$27,235 for the Municipal Authority's 28% share of the debt service on the 1998 note. For the year, the MA recorded \$148,775 in revenues and \$157,869 in expenses. The fund balance was \$1,589,177 as of 12/31/14. Of this amount, \$1,521,706 is in the capital account, primarily from the proceeds of the 2013 note.

Goals

Jack will do an article for the Township newsletter.

Adjournment

There being no further business, Jack moved to adjourn the meeting. Dana seconded the motion. The motion passed unanimously. The meeting was adjourned at 6:35 pm.

Respectfully submitted,

Ruth Kiefer
Recording Secretary



INVOICE

Newark, DE
302-655-4451 Fax: 302-654-2895

Remit Payment To:
Pennoni Associates Inc.
P.O. Box 827328
Philadelphia, PA 19182-7328

East Goshen Municipal Authority
1580 Paoli Pike
West Chester, PA 19380-6199
Attention: Louis F. Smith, Twp Mgr.

Invoice # : 623589
Invoice Date : 01/29/2015
Project : EGMA1504
Project Name : Reservoir Rd PS Design & Permitting

For Services Rendered through: 1/18/2015

Initiated evaluation of concept design alternatives for the diversion vault and valving and pump station controls; prepared first draft of conceptual site plan taking into account site constraints including riparian buffer, floodway, clear sight triangle, and Zoning setbacks, amongst other criteria; subcontracted with geotechnical drilling firm and coordinated scheduling with Township staff; on-site observation, documentation, and visual soils analysis of two borings; summarized results to Township via email; and initiated preparation of boring logs. Invoice includes subcontractor's fee to perform the borings.

Phase Code / Name		Contract Amount	Previously Billed	% Complete	Complete To Date	Amount This Invoice
01 -- Concept Design	est.	\$13,700.00	\$0.00		\$2,267.50	\$2,267.50
02 -- PADEP WQM Permit Pre-Application Mt	est.	\$1,400.00	\$0.00		\$0.00	\$0.00
03 -- Existing Conditions Survey		\$23,300.00	\$0.00	0.00%	\$0.00	\$0.00
04 -- Sewer Stakeout in Easement Areas	est.	\$3,600.00	\$0.00		\$0.00	\$0.00
05 -- 1636 Bow Tree Dr Bndry Survey & Eas		\$4,020.00	\$0.00	0.00%	\$0.00	\$0.00
06 -- Add'l Boundary Survey & Easement	est.	\$9,000.00	\$0.00		\$0.00	\$0.00
07 -- Geotechnical Borings		\$4,000.00	\$0.00	75.82%	\$3,032.80	\$3,032.80
08 -- Install Permanent Survey Benchmarks	est.	\$4,000.00	\$0.00		\$0.00	\$0.00
Total :		\$63,020.00	\$0.00		\$5,300.30	\$5,300.30

Amount Due This Invoice

\$5,300.30

OK RS-26-15

East Goshen Municipal Authority
 EGMA1504 Invoice Summary
 Invoice Date 01/29/2015

Project:	EGMA1504		
Pennoni Job No.:	Reservoir Rd PS Design & Permitting		
Invoice No:	623589		
Invoice Period:	NTP	to	1/18/2015
Initial Authorization:	\$ 63,020.00	Date:	1/29/2015
Contract Amount:	\$ 63,020.00		
Previously Invoiced:	\$ -		
Current Invoice:	\$ 5,300.30		
Invoiced to Date (\$):	\$ 5,300.30		
Invoiced to Date (%):	8%		
Remaining Budget (\$):	\$ 57,719.70		
Remaining Budget (%):	92%		

Budget by Phase:

Phase Name:	2015 Semi-Annual I&I Reports		
Phase Budget:	\$ 63,020.00		
Previously Invoiced:	\$ -		
Current Invoice:	\$ 5,300.30		
Invoiced to Date (\$):	\$ 5,300.30		
Invoiced to Date (%):	8%		
Remaining Budget (\$):	\$ 57,719.70		
Remaining Budget (%):	92%		

Comments: Initiated evaluation of concept design alternatives for the diversion vault and valving and pump station controls; prepared first draft of conceptual site plan taking into account site constraints including riparian buffer, floodway, clear sight triangle, and Zoning setbacks, amongst other criteria; subcontracted with geotechnical drilling firm and coordinated scheduling with Township staff; on-site observation of two borings; summarized results to Township via email; and initiated preparation of boring logs. Invoice includes subcontractor's fee to perform the borings.



INVOICE

Newark, DE
302-655-4451 Fax: 302-654-2895

Remit Payment To:
Pennoni Associates Inc.
P.O. Box 827328
Philadelphia, PA 19182-7328

East Goshen Municipal Authority
1580 Paoli Pike
West Chester, PA 19380-6199
Attention: Louis F. Smith, Twp Mgr.

Invoice # : 623591
Invoice Date : 01/29/2015
Project : EGMA1307
Project Name : Reservoir Rd PS Act 537 Planning

For Services Rendered through: 1/18/2015

FINAL INVOICE

Coordination with PADEP for final Act 537 Plan review status, reviewed PADEP approval letter and forwarded to Township.

Phase : 03 -- Act 537 Plan Update

Total Phase : 03 -- Act 537 Plan Update

Labor :	82.50
Expense :	0.00
Phase Total :	82.50

Amount Due This Invoice

\$82.50

Phase : 03 -- Act 537 Plan Update

Labor Class	Hours/ Units	Rate	Amount
Authority Engineer	0.75	110.00	82.50
Labor Total:	0.75		82.50

Total Phase : 03 -- Act 537 Plan Update

Labor :	\$82.50
Expense :	\$0.00

Total Project : EGMA1307 -- Reservoir Rd PS Act 537 Planning

Labor :	\$82.50
Expense :	\$0.00

ok RS 2-6-15

East Goshen Municipal Authority
EGMA1307 Invoice Summary
Invoice Date 1/29/2015

Project: EGMA1307
Pennoni Job No.: Reservoir Rd PS Act 537 Planning
Invoice No: **623591**
Invoice Period: 12/8/2015 to 1/18/2015
Initial Authorization: \$ 77,400.00 **Date:** 1/29/2015
Contract Amount: \$ 87,900.00
Previously Invoiced: \$ 73,954.75
Current Invoice: \$ 82.50
Invoiced to Date (\$): \$ 74,037.25
Invoiced to Date (%): 84%
Remaining Budget (\$): \$ 13,862.75
Remaining Budget (%): 16%

Budget by Phase:

Phase Name: Reservoir Rd PS Act
537 Planning
Phase Budget: \$ 87,900.00
Previously Invoiced: \$ 73,954.75
Current Invoice: \$ 82.50
Invoiced to Date (\$): \$ 74,037.25
Invoiced to Date (%): 84%
Remaining Budget (\$): \$ 13,862.75
Remaining Budget (%): 16%

Comments: FINAL INVOICE

Coordination with PADEP for final Act 537 Plan review status, reviewed PADEP approval letter and forwarded to Township.



INVOICE

Newark, DE
302-655-4451 Fax: 302-654-2895

Remit Payment To:
Pennoni Associates Inc.
P.O. Box 827328
Philadelphia, PA 19182-7328

East Goshen Municipal Authority
1580 Paoli Pike
West Chester, PA 19380-6199
Attention: Louis F. Smith, Twp Mgr.

Invoice #: 623592
Invoice Date: 01/29/2015
Project: EGMA1401
Project Name: 2014 General Services

For Services Rendered through: 1/18/2015

FINAL INVOICE

Preparation for December's MA meeting including discussing outcome of RCSTP SBR #2 inspection w/ M. McAloon, reviewing USFWS' bog turtle approval conditions for Reservoir Rd PS, and reviewing RCSTP operator's November report; attended December's MA meeting; and assembled 610 Reservoir Rd grinder pump plans and email to PW Director as requested.

Phase : **** -- Professional Services

Total Phase : **** -- Professional Services

Labor :	565.00
Expense :	0.00
Phase Total :	565.00

Amount Due This Invoice

Fee :	10,312.75
Prior Billings :	9,747.75
Current Billings :	565.00
Total Billings :	10,312.75

565.00

Phase : **** -- Professional Services

Labor Class	Hours/Units	Rate	Amount
Authority Engineer	5.00	113.00	565.00
Labor Total:	5.00		565.00

Total Phase : **** -- Professional Services

Labor :	\$565.00
Expense :	\$0.00

Total Project : EGMA1401 -- 2014 General Services

Labor :	\$565.00
Expense :	\$0.00

OK RS 2-6-15

East Goshen Municipal Authority
EGMA1401 Invoice Summary
Invoice Date 1/29/2015

Project: EGMA1401
Pennoni Job No.: 2014 General Services
Invoice No: **623592**
Invoice Period: 12/8/2014 to 1/18/2015
Initial Authorization: \$ 10,300.00 **Date:** 1/29/2015
Contract Amount: \$ 10,300.00
Previously Invoiced: \$ 9,747.75
Current Invoice: \$ 565.00
Invoiced to Date (\$): \$ 10,312.75
Invoiced to Date (%): 100%
Remaining Budget (\$): \$ (12.75)
Remaining Budget (%): 0%

Budget by Phase:

Phase Name: 2014 General Services
Phase Budget: \$ 10,300.00
Previously Invoiced: \$ 9,747.75
Current Invoice: \$ 565.00
Invoiced to Date (\$): \$ 10,312.75
Invoiced to Date (%): 100%
Remaining Budget (\$): \$ (12.75)
Remaining Budget (%): 0%

Comments: FINAL INVOICE

Preparation for December's MA meeting including discussing outcome of RCSTP SBR #2 inspection w/ M. McAloon, reviewing USFWS' bog turtle approval conditions for Reservoir Rd PS, and reviewing RCSTP operator's November report; attended December's MA meeting; and assembled 610 Reservoir Rd grinder pump plans and email to PW Director as requested.



INVOICE

Newark, DE
302-655-4451 Fax: 302-654-2895

Remit Payment To:
Pennoni Associates Inc.
P.O. Box 827328
Philadelphia, PA 19182-7328

East Goshen Municipal Authority
1580 Paoli Pike
West Chester, PA 19380-6199
Attention: Louis F. Smith, Twp Mgr.

Invoice # : 623593
Invoice Date : 01/29/2015
Project : EGMA1402
Project Name : 2014 Semi-Annual I&I Reports

For Services Rendered through: 1/18/2015

FINAL INVOICE

Analyzed October-December 2014 portable meter data; prepared Semi-Annual Sewer System Status Report #12. Analysis and report preparation was completed in Project EGMA1502.

Phase : **** -- Professional Services

Total Phase : **** -- Professional Services

Labor :	464.00
Expense :	0.00
Phase Total :	464.00

Amount Due This Invoice

Fee :	10,326.75
Prior Billings :	9,862.75
Current Billings :	464.00
Total Billings :	10,326.75

\$464.00

Phase : **** -- Professional Services

Labor Class	Hours/Units	Rate	Amount
Authority Engineer	0.25	113.00	28.25
Associate Engineer	5.25	83.00	435.75
Labor Total:	5.50		464.00

Total Phase : **** -- Professional Services

Labor :	\$464.00
Expense :	\$0.00

Total Project : EGMA1402 -- 2014 Semi-Annual I&I Reports

Labor :	\$464.00
Expense :	\$0.00

ok RS 2-6-15

East Goshen Municipal Authority
EGMA1402 Invoice Summary
Invoice Date 1/29/2015

Project:	EGMA1402		
Pennoni Job No.:	2014 Semi-Annual I&I Reports		
Invoice No:	623593		
Invoice Period:	11/10/2014	to	1/18/2015
Initial Authorization:	\$ 10,300.00	Date:	1/29/2015
Contract Amount:	\$ 10,300.00		
Previously Invoiced:	\$ 9,862.75		
Current Invoice:	\$ 464.00		
Invoiced to Date (\$):	\$ 10,326.75		
Invoiced to Date (%):	100%		
Remaining Budget (\$):	\$ (26.75)		
Remaining Budget (%):	0%		

Budget by Phase:

Phase Name:	2014 Semi-Annual I&I Reports	
Phase Budget:	\$	10,300.00
Previously Invoiced:	\$	9,862.75
Current Invoice:	\$	464.00
Invoiced to Date (\$):	\$	10,326.75
Invoiced to Date (%):		100%
Remaining Budget (\$):	\$	(26.75)
Remaining Budget (%):		0%

Comments: FINAL INVOICE

Analyzed

October-December 2014 portable meter data; prepared Semi-Annual Sewer System Status Report #12. Analysis and report preparation was completed in Project EGMA1502.



INVOICE
 Newark, DE
 302-655-4451 Fax: 302-654-2895

Remit Payment To:
 Pennoni Associates Inc.
 P.O. Box 827328
 Philadelphia, PA 19182-7328

East Goshen Municipal Authority
 1580 Paoli Pike
 West Chester, PA 19380-6199
 Attention: Louis F. Smith, Twp Mgr.

Invoice # : 623594
Invoice Date : 01/29/2015
Project : EGMA1501
Project Name : 2015 General Services

For Services Rendered through: 1/18/2015

Prepared January's MA report, reviewed meeting packet, reviewed RCSTP operator's monthly report, attended MA meeting, and followed-up to meeting with staff regarding RCSTP SBR repairs status and Hershey's Mill PS and Marydell PS Diversions 2-yr warranty inspections schedule.

Phase : ** -- Professional Services**

Total Phase : ** -- Professional Services**

Labor : 661.25
Expense : 0.00
Phase Total : 661.25

Amount Due This Invoice

Fee : 12,000.00
Prior Billings : 0.00
Current Billings : 661.25
Total Billings : 661.25

\$661.25

Phase : ** -- Professional Services**

Labor Class	Hours/Units	Rate	Amount
Authority Engineer	5.75	115.00	661.25
Labor Total:	5.75		661.25

Total Phase : ** -- Professional Services**

Labor : \$661.25
Expense : \$0.00

Total Project : EGMA1501 -- 2015 General Services

Labor : \$661.25
Expense : \$0.00

OK PS 2-6-15

East Goshen Municipal Authority
 EGMA1501 Invoice Summary
 Invoice Date 01/29/2015

Project:	EGMA1501		
Pennoni Job No.:	2015 General Services		
Invoice No:	623594		
Invoice Period:	NTP	to	1/18/2015
Initial Authorization:	\$ 12,000.00	Date:	1/29/2015
Contract Amount:	\$ 12,000.00		
Previously Invoiced:	\$ -		
Current Invoice:	\$ 661.25		
Invoiced to Date (\$):	\$ 661.25		
Invoiced to Date (%):	6%		
Remaining Budget (\$):	\$ 11,338.75		
Remaining Budget (%):	94%		

Budget by Phase:

Phase Name:	2015 General Services		
Phase Budget:	\$ 12,000.00		
Previously Invoiced:	\$ 14,400.00		
Current Invoice:	\$ -		
Invoiced to Date (\$):	\$ 881.50		
Invoiced to Date (%):	7%		
Remaining Budget (\$):	\$ 11,118.50		
Remaining Budget (%):	93%		

Comments: Prepared January's MA report, reviewed meeting packet, reviewed RCSTP operator's monthly report, attended MA meeting, and followed-up to meeting with staff regarding RCSTP SBR repairs status and Hershey's Mill PS and Marydell PS Diversions 2-yr warranty inspections schedule.



INVOICE

Newark, DE
302-655-4451 Fax: 302-654-2895

Remit Payment To:
Pennoni Associates Inc.
P.O. Box 827328
Philadelphia, PA 19182-7328

East Goshen Municipal Authority
1580 Paoli Pike
West Chester, PA 19380-6199
Attention: Louis F. Smith, Twp Mgr.

Invoice # : 623595
Invoice Date : 01/29/2015
Project : EGMA1502
Project Name : 2015 Semi-Annual I&I Reports

For Services Rendered through: 1/18/2015

Completed analysis of October-December 2014 portable meter data; edited, finalized, and submitted Semi-Annual Sewer System Status Report #12 (draft report had been prepared in September 2014); prepared I&I maps and verbal summary for January's MA meeting; and researched frozen ground impact on I&I as requested by MA.

Phase : **** -- Professional Services

Total Phase : **** -- Professional Services

Labor :	2,053.75
Expense :	0.00
Phase Total :	2,053.75

Amount Due This Invoice

Fee :	10,500.00
Prior Billings :	0.00
Current Billings :	2,053.75
Total Billings :	2,053.75

\$2,053.75

Phase : **** -- Professional Services

Labor Class	Hours/Units	Rate	Amount
Authority Engineer	4.00	115.00	460.00
Associate Engineer	18.75	85.00	1,593.75
Labor Total:	22.75		2,053.75

Total Phase : **** -- Professional Services

Labor :	\$2,053.75
Expense :	\$0.00

Total Project : EGMA1502 -- 2015 Semi-Annual I&I Reports

Labor :	\$2,053.75
Expense :	\$0.00

O.K.T.S 2-6-15

East Goshen Municipal Authority
EGMA1502 Invoice Summary
Invoice Date 01/29/2015

Project: EGMA1502
Pennoni Job No.: 2015 Semi-Annual I&I Reports
Invoice No: **623595**
Invoice Period: NTP to 1/18/2015
Initial Authorization: \$ 10,500.00 **Date:** 1/29/2015
Contract Amount: \$ 10,500.00
Previously Invoiced: \$ -
Current Invoice: \$ 2,053.75
Invoiced to Date (\$): \$ 2,053.75
Invoiced to Date (%): 20%
Remaining Budget (\$): \$ 8,446.25
Remaining Budget (%): 80%

Budget by Phase:

Phase Name: 2015 Semi-Annual I&I Reports
Phase Budget: \$ 10,500.00
Previously Invoiced: \$ -
Current Invoice: \$ 2,053.75
Invoiced to Date (\$): \$ 2,053.75
Invoiced to Date (%): 20%
Remaining Budget (\$): \$ 8,446.25
Remaining Budget (%): 80%

Comments: Completed analysis of October-December 2014 portable meter data; edited, finalized, and submitted Semi-Annual Sewer System Status Report #12 (completed draft report that was prepared in September 2014; prepared I&I maps and verbal summary for January's MA meeting; and researched frozen ground impact on I&I.



INVOICE

Newark, DE
302-655-4451 Fax: 302-654-2895

Remit Payment To:
Pennoni Associates Inc.
P.O. Box 827328
Philadelphia, PA 19182-7328

East Goshen Municipal Authority
1580 Paoli Pike
West Chester, PA 19380-6199
Attention: Louis F. Smith, Twp Mgr.

Invoice # : 623596
Invoice Date : 01/29/2015
Project : EGMA1503
Project Name : 2014 Chapter 94 Reports

For Services Rendered through: 1/18/2015

Initiated preparation of RCSTP Chapter 94 Report.

Phase : **** -- Professional Services

Total Phase : **** -- Professional Services

Labor :	1,827.50
Expense :	0.00
Phase Total :	<u>1,827.50</u>
	<u>\$1,827.50</u>

Amount Due This Invoice

Fee :	14,800.00
Prior Billings :	0.00
Current Billings :	1,827.50
Total Billings :	1,827.50

Phase : **** -- Professional Services

Labor Class	Hours/Units	Rate	Amount
Associate Engineer	21.50	85.00	1,827.50
Labor Total:	21.50		1,827.50

Total Phase : **** -- Professional Services

Labor :	\$1,827.50
Expense :	\$0.00

Total Project : EGMA1503 – 2014 Chapter 94 Reports

Labor :	\$1,827.50
Expense :	\$0.00

OK RS 2-6-15

East Goshen Municipal Authority
EGMA1503 Invoice Summary
Invoice Date 01/29/2015

Project:	EGMA1503		
Pennoni Job No.:	2015 Chapter 94 Reports		
Invoice No:	623596		
Invoice Period:	NTP	to	1/18/2015
Initial Authorization:	\$ 14,800.00	Date:	1/29/2015
Contract Amount:	\$ 10,500.00		
Previously Invoiced:	\$ -		
Current Invoice:	\$ 1,827.50		
Invoiced to Date (\$):	\$ 1,827.50		
Invoiced to Date (%):	17%		
Remaining Budget (\$):	\$ 8,672.50		
Remaining Budget (%):	83%		

Budget by Phase:

Phase Name:	2015 Chapter 94 Reports		
Phase Budget:	\$ 10,500.00		
Previously Invoiced:	\$ -		
Current Invoice:	\$ 1,827.50		
Invoiced to Date (\$):	\$ 1,827.50		
Invoiced to Date (%):	17%		
Remaining Budget (\$):	\$ 8,672.50		
Remaining Budget (%):	83%		

Comments: Initiated preparation of RCSTP Chapter 94 Report.

Memo

To: Municipal Authority
From: Jon Altshul
Re: MA January Financial Reports
Date: February 4, 2015

In January, the Municipal Authority recorded \$556.41 in revenues and \$3,702 in expenses, for a variance of -\$3,145. As of January 31, the fund balance was \$1,586,031, of which \$1,520,845 is in the construction account.

A complete list of all year-to-date expenses and revenues is provided.

EAST GOSHEN TOWNSHIP
 1580 PAOLI PIKE
 WEST CHESTER, PA
 Municipal Authority
 January 2015

Account Title	Acct #	Annual Budget	Month To Date Actual	Year To Date Actual
MUNICIPAL AUTHORITY BEGINNING FUND BALANCE				
			1,589,176.52	
RCSTP BUDGET				
REVENUE				
INTEREST EARNED - RCSTP EXPANSION	07341 1020	1,600.00	131.97	131.97
GRANT REVENUE	07392 0800	0.00	0.00	0.00
TOTAL REVENUE		1,600.00	131.97	131.97
EXPENSES				
R.-CAP. PROJ.-ENGINEER	07424 7451	0.00	0.00	0.00
R.-C. CAP EXPANSION GEN'L CONTRACTOR	07424 7452	0.00	0.00	0.00
R.-C. CAP EXPANSION - ELECTRICAL	07424 7453	0.00	0.00	0.00
R.-C. CAP EXP CONTINGENCY CAPITAL	07424 7454	0.00	0.00	0.00
R.-C. CAP EXP CONTINGENCY ONGOING	07424 7455	0.00	0.00	0.00
R.-C. CAP EXP ADDITIONAL CONTINGENCY	07424 7456	0.00	0.00	0.00
TRANSFER TO SEWER SINKING FUND	07492 0550	0.00	0.00	0.00
TRANSFER TO AUTHORITY CAP FUND	07492 0990	0.00	0.00	0.00
TOTAL EXPENSES		0.00	0.00	0.00
RCSTP NET RESULT		1,600.00	131.97	131.97

EAST GOSHEN TOWNSHIP
 1580 PAOLI PIKE
 WEST CHESTER, PA
 Municipal Authority
 January 2015

Account Title	Acct #	Annual Budget	Month To Date Actual	Year To Date Actual
OPERATING BUDGET				
REVENUE				
INTEREST EARNINGS	07341 1000	15.00	1.44	1.44
C.C. TAPPING FEES	07364 1100	0.00	0.00	0.00
R.C.TAPPING FEES	07364 1110	14,296.00	0.00	0.00
CONNECTION FEES - SEWER	07364 1130	0.00	281.88	281.88
MISCELLANEOUS REVENUE	07380 1000	0.00	141.12	141.12
TRANSFER FROM SEWER OPERATING	07392 0500	105,105.00	0.00	0.00
TOTAL REVENUE		119,416.00	424.44	424.44
EXPENSES				
ADMINISTRATIVE WAGES	07424 1400	33,323.00	0.00	0.00
MISCELLANEOUS EXPENSE	07424 3000	3,000.00	1,450.00	1,450.00
MUNIC.AUTH.-AUDITING	07424 3110	10,984.00	0.00	0.00
ENGINEERING SERVICES	07424 3130	37,300.00	1,261.50	1,261.50
LEGAL SERVICES	07424 3140	9,000.00	0.00	0.00
M.C.-DVRFA-DEBT SERVICE	07471 1000	23,240.00	0.00	0.00
M.C.-DVRFA-INTEREST PAYMN	07472 1000	4,169.00	0.00	0.00
M.C.-DVRFA-INTEREST PAYMN	07472 1010	0.00	0.00	0.00
TOTAL EXPENSES		121,016.00	2,711.50	2,711.50
OPERATING NET RESULT		(1,600.00)	(2,287.06)	(2,287.06)

EAST GOSHEN TOWNSHIP
 1580 PAOLI PIKE
 WEST CHESTER, PA
 Municipal Authority
 January 2015

Account Title	Acct #	Annual Budget	Month To Date Actual	Year To Date Actual
CAPITAL BUDGET				
REVENUE				
LOAN PROCEEDS-SEWER PROJECT	07393 1001	0.00	0.00	0.00
TRANSFER FROM SEWER CAP RESERVE	07392 0900	0.00	0.00	0.00
TOTAL REVENUE		0.00	0.00	0.00
EXPENSES				
MARYDELL PUMP STATION - ENGINEER	07425 1000	0.00	0.00	0.00
MARYDELL PUMP STATION -CONSTRUCTION	07425 2000	0.00	0.00	0.00
MANHOLE COVER REPLACEMENTS	07424.7405	0.00	0.00	0.00
C.C. CAPITAL - COLLECTION	07424.7420	0.00	0.00	0.00
LOCHWOOD ABANDONMENT ENGINEER	07424 7475	0.00	0.00	0.00
LOCHWOOD ABANDONMENT CONSTRUCTION	07424 7476	0.00	0.00	0.00
LOCHWOOD ELIMINATION PHASE 2	07424 7477	0.00	0.00	0.00
HERSHEY MILL STATION - ENGINEER	07426 1000	0.00	0.00	0.00
HERSHEY MILL STATION - CONSTRUCTION	07426 2000	0.00	0.00	0.00
RESERVE PUMP STATION - ENGINEER	07427 1000	0.00	0.00	0.00
RESERVE PUMP STATION - CONSTRUCTION	07427 2000	0.00	0.00	0.00
RESERVOIR PUMP STATION - ENGINEER	07428 1000	100,000.00	990.00	990.00
RESERVOIR PUMP STATION CONSTRUCTION	07428 2000	0.00	0.00	0.00
TOTAL EXPENSES		100,000.00	990.00	990.00
CAPITAL NET RESULT		(100,000.00)	(990.00)	(990.00)
MUNICIPAL AUTHORITY ENDING FUND BALANCE			1,586,031.43	

MGRP18 run by BRIAN 1 : 52 PM

Acct #	Per	Src Trx #	Debits	Credits	Beg/End Bal	Date	Check/Ref #	ID #	Name/Description
07341-1000					0.00				
		INTEREST EARNINGS							
	1501	JE 46156		1.44		02/03/15	INTEREST		INTEREST EARNED JANUARY 2015 07 FUND
			0.00	1.44	-1.44				
07341-1020					0.00				
		INTEREST EARNED - RCSTP EXPANSION							
				131.97		02/03/15	INTEREST		INTEREST EARNED JANUARY 2015 07 FUND
			0.00	131.97	-131.97				
07364-1130					0.00				
		CONNECTION FEES - SEWER							
		CR 45967		423.00		01/16/15	789	8648	1 GEORGE SMITH & CHRISTINA CONLE
		JE 45968	141.12			01/16/15	PINE ROCK		ANNUAL PINE ROCK INSTALLMENT
			141.12	423.00	-281.88				
07380-1000					0.00				
		MISCELLANEOUS REVENUE							
				141.12		01/16/15	PINE ROCK		ANNUAL PINE ROCK INSTALLMENT
			0.00	141.12	-141.12				
07424-3000					0.00				
		MISCELLANEOUS EXPENSE							
		CD 45777	950.00			01/02/15	2260		2132 PENNSYLVANIA MUNICIPAL AUTHORITIES ASSOC 2015 ACTIVE MEMBERSHIP DUES
		46110	500.00			01/29/15	2263		2737 COMMONWEALTH OF PA ANNUAL FEE - NPDES PERMIT -CHAP.
			1,450.00	0.00	1,450.00				
07424-3130					0.00				
		ENGINEERING SERVICES							
		45953	621.50			01/15/15	2261		1052 PENNONI ASSOCIATES INC. SERVICES THRU 12/7/14 GENERAL
		46013	640.00			01/22/15	2262		1052 PENNONI ASSOCIATES INC. SERVICE THRU 11/9/14 GEN.SERVICE
			1,261.50	0.00	1,261.50				
07428-1000					0.00				
		RESERVOIR PUMP STATION - ENGINEER							
		45954	137.50			01/15/15	10029		1052 PENNONI ASSOCIATES INC. SERV.THRU 12/7/14 RESERV.RD ACT
		46014	852.50			01/22/15	10030		1052 PENNONI ASSOCIATES INC. SERVICE THRU 11/9/14 RESERVOIR R ACT.537

MGRP18 run by BRIAN 1 : 52 PM

Acct #	Per	Src Trx #	Debits	Credits	Beg/End Bal	Date	Check/Ref #	ID #	Name/Description
			990.00	0.00	990.00				
Beg Bal		0.00	3,842.62	697.53	3,145.09				

Rick Smith

From: Rick Smith <~~smith@eastgoshen.org~~>
Sent: Wednesday, January 14, 2015 7:39 AM
To: ~~jmorgan@eastgoshen.org; nscheiderman@eastgoshen.org~~
Subject: Comp Plane Task Force

Joanne

The Comp Plan Task Force is going to meet on

Monday April 13, 2015 at 7 pm	—	CONFLICT
Monday June 8, 2015 at 7 pm	—	CONFLICT
Wednesday June, 10 2015 at 7 pm		
Thursday June 11, 2015 at 7 pm		
Monday August 10, 2015 at 7 pm	—	CONFLICT

We will need the big room.

Please put these in the book.

They will also meet on Thursday June 11 2015 at 8 am - This meeting will probably be held at Hershey Mill Golf Club.

Since these meeting conflict with some Authority, Conservancy Board and Historical Commission meeting we will need to work out some logistics. So we do not need to advertise just yet.

Rick

MA

Rick Smith

From: Rick Smith <rsmith@eastgoshen.org>
Sent: Wednesday, January 14, 2015 9:07 AM
To: 'Krcummings'; 'Walter Wujcik'; Chris Reardon (cr19380@yahoo.com)
Subject: Comp Plan Task Force

Gentlemen

The Comp Plan Task Force is going to meet on the following dates. We recognize that this will result in the conflicts noted below.

Monday April 13, 2015 at 7 pm - CPTK Meeting - conflict with MA

Monday June 8, 2015 at 7 pm - Stakeholder Meeting with Board of Supervisors - conflict with MA

Wednesday June, 10 2015 at 7 pm - Stakeholder Meeting with all ABCs - conflict with CB

Thursday June 11, 2015 at 7 pm - Stakeholder Meeting with residents - conflict with HC

Monday August 10, 2015 at 7 pm – CPTK Meeting - conflict with MA

They will also meet on Thursday June 11 2015 at 8 am - This meeting will probably be held at Hershey Mill Golf Club.

Given the importance of Comp Plan and the fact that it is critical that each ABC be represented at these meetings it may be prudent to reschedule your regular meeting.

Perhaps you can discuss this at an upcoming meeting.

Rick