

EAST GOSHEN MUNICIPAL AUTHORITY

October 12, 2015

7:00 PM

1. CALL TO ORDER/PLEDGE OF ALLEGIANCE/MOMENT OF SILENCE
 - a. Ask if anyone will be taping the meeting?
2. CHAIRMAN'S REPORT/OTHER MEMBERS REPORTS
3. SEWER REPORTS
 - a. Director of Public Works Report
 - b. Pennoni Engineer's Report
 - c. Big Fish Environmental Inc. Report with DMR's July, August and September
 - d. East Goshen Township Flows
3. APPROVAL OF MINUTES
 - a. August 10, 2015
4. APPROVAL OF INVOICES

a. Pennoni	Invoice #655756	\$ 230.00
b. Pennoni	Invoice #655757	\$ 411.25
c. Pennoni	Invoice #655832	\$34,515.75
d. Gawthrop	Invoice #135684	\$ 260.00
5. LIAISON REPORTS
6. FINANCIAL REPORTS
 - a. August 2015 Report
7. OLD BUSINESS
 - a. Letter on house lateral inspections
8. GOALS
 - a. Submit an article for each newsletter – Due date for newsletter
Need by 1/30/15 – Jack - Completed
Need by 5/1/15 – Dana - Completed
Need by 8/31/15 - Ed - **Completed**
Need by 10/30/15

- b. Obtain construction permits for the Reservoir Road Pump Station – December 31, 2015 2/6 – Test boring done, meeting with Mike to review preliminary site plan and discuss control options. 3/9 concept design completed, met with PA DEP. 5/11 stormwater perc test completed, scheduled to meet with CCCD on 5/21 6/8 Nothing unusual from our meeting with CCCD. Rick and Mark need to met with WG to discuss control process. 6/22 WG is ok with proposed control process
- c. Attend West Goshen Meetings quarterly – more often if needed.
 - 1st Quarter – Jack - Completed
 - 2nd Quarter – Jack - Completed
 - 3rd Quarter - Ed - **Completed**
 - 4th Quarter
- d. Respond to capacity requests in 45 days or less.
- e. Continue to implement I & I Plan 5/11 meeting with Mike on 5/13 to review plan
- f. Operate RCSTP in compliance with NPDES Permit **February, April, May, June, July, August**

9. NEW BUSINESS

- a. Consider 2016 Proposed Municipal Authority Budget
- b. 3 & 5 School Lane request sewer service and grinder pump
- c. article on 8 trillion microbeads pollute U.S. aquatic habitats daily

10. CAPACITY REQUESTS

11. ANY OTHER MATTER

- a. Letter on House Lateral Inspections

12. CORRESPONDENCE AND REPORTS OF INTEREST

13. PUBLIC COMMENT

14. ADJOURNMENT

EAST GOSHEN MUNICIPAL AUTHORITY
EAST GOSHEN TOWNSHIP
1580 PAOLI PIKE, WEST CHESTER, PA 19380-6199

October 12, 2015

To: Municipal Authority
From: Mark Miller
Re: September 2015 Monthly Report

Meters: All meters were read on a daily basis. The meter at Westtown Way went down for two weeks and is now back up and running.

C.C. Collection: All pumping stations were visited on a routine basis.

We are still preparing Cooper Circle and Supplee Valley for road re-surfacing.

R.C. Collection: Was visited on a routine basis.
Wentworth Development was cleaned and televised. Also Cornwallis Dr. and Colonial Dr. and a small portion of Paoli Pike was cleaned and televised.

R.C. Plant: Was visited on a routine basis with no problems to report.

Re-sale Inspections:

Alarms: We responded to 4 alarms for September.

PA One Calls: We received 23 PA One calls for September.



MEMORANDUM

TO: East Goshen Municipal Authority Board
Rick Smith, Township Manager

FROM: Michael Ellis, P.E.
Authority Engineer

DATE: September 10, 2015 + October 12, 2015

SUBJECT: Engineer's Report

Invoices

- Invoices with summaries are provided under separate cover.

Ridley Creek Sewage Treatment Plant (RCSTP)

- No activity since the last report.

Reservoir Road Pump Station

- We completed an approximately 90% progress design plan submission that was submitted to the Township Codes and PW Departments for review.
- We met with the Township Codes Officer and Township Manager on September 2nd to present the progress design plans, obtain feedback on the stormwater management design concept, discuss general building code compliance for the control building, and determine floodplain permitting process and requirements.
- We have scheduled an internal review of the stormwater design for compliance with the EGT Stormwater Ordinance.
- We initiated a limited floodplain filling impact analysis to quantify any floodplain impacts, which has been determined to be necessary for local and DEP floodplain permitting.
- We coordinated with the DEP and Township on the permit application approach for the two PADEP GP-5 "Utility Line Stream Crossings" permits, one PADEP GP-8 "Temporary Road Crossings (across streams)" permit, and floodplain filling permit. We continued with preparation of these permit applications as well as the NPDES permit application.
- We submitted a PennDOT HOP application for soft dig test pits to locate petroleum and gas pipelines in and along N. Chester Road and Strasburg Road that are proposed to be crossed with the new force main. We received comments from PennDOT and submitted additional information to address the comments. We are expecting the permit to be issued within the next 2 weeks.

EGMA 1501

- The tentative schedule has been extended one month to allow time to address local and DEP floodplain filling permit requirements, including a limited H&H analysis:

Estimated Date

- Submit PADEP permit applications.....mid-October 2015
- Rt. 352 soft digs for utilities September-October 2015
- Submit PennDOT Highway Occupancy Permit application for proposed force main..... January 2016
- PADEP and PennDOT permit issuancemid-February 2016

Semi-Annual I&I Reports

- We received the first three weeks of portable meter data for the relocated and recalibrated meters. The data is currently under review.



Monthly Operations Report: September 2015

Executive Summary

The Ridley Creek sewage treatment plant outfall 001 achieved compliance with the NPDES discharge permit during August 2015. Discharge to Applebrook continued during September. Chemical usage utilized for total phosphorus removal, pH and total alkalinity remained consistent with previous months. No mechanical or operational issues were observed during operation of sludge dewatering equipment.

Treatment Process Operation

During August 2015, there were no exceedances of the final effluent discharge limitations for outfall 001. Additional TSS samples were collected each week. The total phosphorus monthly average concentration of 0.30 mg/L as compared to the permitted limitation of 0.50 mg/L. Table 1 illustrates the final effluent composite sample data reported for the August 2015 eDMR. During the month, the final effluent total phosphorus concentration discharged ranged from 0.13 mg/L to 0.39 mg/L. The aluminum sulfate daily average slightly increased to 81.0 gpd as compared to August's average of 80.2 gpd.

Table 1

August 2015 - Final Effluent - Out Fall 001											
NPDES Permit Discharge Limitations	Flow	CBOD ₅		TSS		NH ₄ -N		Phosphorus, Total , mg/L		Fecal Coliform	
	MGD Average	mg/L	lbs/ month	mg/L	lbs/ month	mg/L	lbs/ month	mg/L	lbs/ month	Geo Mean	Geo Mean
	0.75	20	125	21	131	7	44	0.5	3	200	1,000
	Instantaneous Maximum	40		42							
Sample Date											
August 4, 2015	0.180	2.0	3.0	4	6	0.100	0.15		0.00	1	0.0000
August 7, 2015	0.161			3	4						
August 11, 2015	0.191	2.0	3.2	4	6	0.100	0.16	0.24	0.38	1	0.0000
August 14, 2015	0.163			3	4						
August 18, 2015	0.154	2.0	2.6	5	6	0.143	0.18	0.33	0.42	1	0.0000
August 25, 2015	0.152			3	4						
August 27, 2015	0.142	2.0	2.4	4	5	0.145	0.17	0.21	0.25	1	0.0000
Average	0.163	2.0	2.8	4	5	0.122	0.17	0.26	0.26	1	0.0000
Minimum	0.142	2.0	2.4	3	4	0.100	0.15	0.21	0.00	1	0.0000
Maximum	0.191	2.0	3.2	5	6	0.145	0.18	0.33	0.42	1	0.0000



Discharge to Applebrook, Outfall 002, continued during August 2015. Table 1 illustrates the final effluent composite sample data reported for the August 2015 eDMR. There were exceedances of the permitted discharge limitations for Outfall 002.

Table 2

August 2015 - Applebrook - Out Fall 002											
NPDES Permit Discharge Limitations	Flow	CBOD ₅		TSS		NH ₄ -N		Phosphorus, Total , mg/L		Fecal Coliform	
	MGD Average	mg/L	lbs/ month	mg/L	lbs/ month	mg/L	lbs/ month	mg/L	lbs/ month	Geo Mean	Geo Mean
	0.75	20	125	21	131	7	44	0.5	3	200	1,000
	Instantaneous Maximum	40		42							
Sample Date											
August 4, 2015	0.103	2.0	3.0	4.0	6.0	0.1	0.2	0.0	0.0	1.0	0.0
August 7, 2015	0.114			3.0	4.0						
August 11, 2015	0.132	2.0	3.2	4.0	6.4	0.1	0.2	0.2	0.4	1.0	0.0
August 14, 2015	0.121			3.0	4.1						
August 18, 2015	0.136	2.0	2.6	5.0	6.4	0.1	0.2	0.3	0.4	1.0	0.0
August 25, 2015	0.128			3.0	3.8						
August 27, 2015	0.104	2.0	2.4	4.0	4.7	0.1	0.2	0.2	0.2	1.0	0.0
Average	0.1196	2.0	2.8	4	5.1	0.12	0.17	0.20	0.26	1	0.0000
Minimum	0.1029	2.0	2.4	3	3.8	0.10	0.150	0.00	0.00	1	0.0000
Maximum	0.1359	2.0	3.2	5	6.4	0.15	0.18	0.33	0.42	1	0.0000

Table 3 illustrates the influent wastewater pollutant loadings for August 20115. The influent loadings remained within the treatment facility design loadings.



Table 3

August 2015 - Influent Wastewater											
Design Basis	Flow	BOD ₅		TSS		NH ₄ -N		TKN, mg/L		Phosphorus, Total, mg/L	
		mg/L	lbs/day	mg/L	lbs/day	mg/L	lbs/day	mg/L	lbs/day	mg/L	lbs/day
	MGD Average	335	2,098	320	2,001	32	200	48	301	9.1	57
Sample Date											
August 4, 2015	0.230	254	487	234	449	37.4	72	50.1	96	6	12
August 11, 2015	0.341	195	374	188	361	36.9	71	57	162	4.7	9
August 18, 2015	0.286	134	257	66	127	37.7	72	48.2	115	4.4	8
August 25, 2015	0.325	273	524	198	380	37.4	72	55.4	150	5.9	11
Average	0.296	214	410	172	329	37.4	72	52.7	131	5.3	10
Minimum	0.230	134	257	66	127	36.9	71	48.2	96	4.4	8
Maximum	0.341	273	524	234	449	37.7	72	57.0	162	6.0	12

Table 4 presents the available Outfall 001 final effluent data for the month of September 2015. During September, the presence of foam conditions on the surface of the SBRs remained at less than 10% of the surface area. This is attributed to increasing the F:M ratio and increased biological activity resulting in part from the increasing MLSS water temperatures.

During September, there were no exceedances of the permitted limitations for Outfalls 001 and 002. Split sampling of the composite sample collected by Applied Laboratory Services (ALS) is ongoing for comparative analysis and daily results.



Table 4

September 2015 - Final Effluent - Out Fall 001											
NPDES Permit Discharge Limitations	Flow	CBOD₅		TSS		NH₄-N		Phosphorus, Total , mg/L		Fecal Coliform	
	MGD Average	mg/L	lbs/ month	mg/L	lbs/ month	mg/L	lbs/ month	mg/L	lbs/ month	Geo Mean	Geo Mean
	0.75	20	125	21	131	7	44	0.5	3	200	1,000
	Instantaneous Maximum	40		42							
Sample Date											
September 1, 2015	0.167	2.0	2.8	4	6	0.100	0.14	0.13	0.18	1	0.0000
September 3, 2015	0.206			3	5						
September 8, 2015	0.165	2.0	2.8	5	7	0.482	0.66	0.32	0.44	1	0.0000
September 10, 2015	0.181			3	5						
September 22, 2015	0.150	2.6	3.3	5	6	3.72	4.65	0.37	0.46	1	0.0000
September 24, 2015	0.164			5	7						
September 29, 2015	0.154	2.0	2.6	5	6	0.159	0.20	0.39	0.50	1	0.0000
Average	0.170	2.2	2.8	4	6	1.115	1.42	0.30	0.40	1	0.0000
Minimum	0.150	2.0	2.6	3	5	0.100	0.14	0.13	0.18	1	0.0000
Maximum	0.206	2.6	3.3	5	7	3.720	4.65	0.39	0.50	1	0.0000

During September 2015, discharge of treated effluent to Applebrook. Table 5 illustrates the available data for outfall 002.

The influent wastewater pollutant concentrations and loading entering the wastewater treatment facility remained within the design concentrations and loadings. Composite samples are collected at the influent doghouse manhole and influent wet well. The influent flow meter reading is collected from the influent flow meter located prior to the Screening Building, excluding the internal recycle flows.



Table 5

September 2015 - Applebrook - Out Fall 002											
NPDES Permit Discharge Limitations	Flow	CBOD ₅		TSS		NH ₄ -N		Phosphorus, Total , mg/L		Fecal Coliform	
	MGD Average	mg/L	lbs/ month	mg/L	lbs/ month	mg/L	lbs/ month	mg/L	lbs/ month	Geo Mean	Geo Mean
	0.75	20	125	21	131	7	44	0.5	3	200	1,000
	Instantaneous Maximum	40		42							
Sample Date											
September 1, 2015	0.138	2.0	2.8	4.0	5.6	0.100	0.1	0.13	0.2	1.0	0.0
September 3, 2015	0.104			3.0	5.2						
September 8, 2015	0.140	2.0	2.8	5.0	6.9	0.482	0.7	0.32	0.4	1.0	0.0
September 10, 2015	0.136			3.0	4.5						
September 22, 2015	0.129	2.6	3.3	5.0	6.3	3.72	4.7	0.37	0.5	1.0	0.0
September 24, 2015	0.134			5.0	6.8						
September 29, 2015	0.118	2.0	2.6	5.0	6.4	0.159	0.2	0.39	0.5	1.0	0.0
Average	0.1282	2.2	2.8	4	5.9	1.12	1.42	0.30	0.40	1	0.0000
Minimum	0.1035	2.0	2.6	3	4.5	0.10	0.139	0.13	0.18	1	0.0000
Maximum	0.1398	2.6	3.3	5	6.9	3.72	4.65	0.39	0.50	1	0.0000

Table 6 presents the available pollutant data for the influent wastewater collected at the doghouse manhole during September 2015.

Table 6

September 2015 - Influent Wastewater											
Design Basis	Flow	BOD ₅		TSS		NH ₄ -N		TKN, mg/L		Phosphorus, Total, mg/L	
		mg/L	lbs/day	mg/L	lbs/day	mg/L	lbs/day	mg/L	lbs/day	mg/L	lbs/day
	MGD Average	335	2,098	320	2,001	32	200	48	301	9.1	57
	Sample Date										
September 1, 2005	0.331	240	663	250	691	38.2	106	56.0	155	6.8	19
September 8, 2015	0.313	146	403	200	552	41.7	115	47.8	125	4.8	13
September 22, 2015	0.320	193	533	247	682	38.7	107	50.3	134	5.5	15
September 29, 2015	0.317	131	362	111	307	37.3	103	47.3	125		
Average	0.320	178	490	202	558	39.0	108	50.4	135	5.7	16
Minimum	0.313	131	362	111	307	37.3	103	47.3	125	4.8	13
Maximum	0.331	240	663	250	691	41.7	115	56.0	155	6.8	19



Sequencing batch reactors (SBRs) numbered 1, 3 and 4 were in service during August and September. Process monitoring of each SBR included ammonia as N, nitrite as N, Nitrate as N, COD, SSV, MLSS and total phosphorus. Daily analysis of the final effluent flow equalization grab sample is total phosphorus is ongoing. Sample collection and analysis of the influent wastewater collected at the influent pump station wet well is ongoing.

Addition of aluminum sulfate solution to the SBRs to assist with phosphorus removal continued. The volume of aluminum sulfate solution to the SBRs slightly increased to 81.0 gpd. Soda ash daily addition decreased from 481 lbs. /day to 424 lbs. /day. Soda ash assists towards maintaining SBR pH concentrations above 7.0 standard units and assists to replenish alkalinity consumed during the nitrification process and aluminum sulfate solution addition.

SBR No. 2 remains out of service as a treatment unit. Minor repairs will be scheduled as weather conditions permit.

Solids Dewatering and Disposal: September 2015

Sludge Dewatering Summary	
Gallons of sludge dewatered	279,215
Number of dumpsters	5

**nineteen (19) days of centrifuge operation*

Flow data:

September 2015			
Flow Meter Location	Total Volume for Month, MG	Average Daily Flow, gpd	Daily Maximum Flow, gpd
Influent Wastewater to Screening Building*	10.065	335,485	430,810
Influent Wastewater to SBRs	11.276	375,868	504,704
Internal Recycle	1.329	44,295	79,598
Treated Effluent to Disc Filters	10.843	361,419	450,752
Final Effluent Discharge	5.007	166,900	222,000
Applebrook Golf Course	3.700	123,325	153,528



Chemical Usage:

September 2015		
Chemical	Daily Average	Total Monthly
Soda Ash	424	13,150
Aluminum Sulfate solution	81.0	2,430
Polymer (centrifuge)	0.84	15.96

**nineteen (19) days of centrifuge operation*

During September, sludge wasting to the sludge holding tanks and decanting of the sludge holding tanks was ongoing. Process monitoring included pH, total alkalinity and total solids.

Sludge holding tank No. 1 was in service. The level at the beginning of September was 9.98 feet and the level at the end of the month was 14.11 feet. The average pH concentration was 6.72 S.U. and average total alkalinity concentration was 120 mg/L. Zero gallons of supernatant were decanted during the month. A total of 450 pounds of soda ash were added. An average total solids concentration of the sludge in the sludge holding tanks was 0.72%

Sludge holding tank No. 2 was in service. The level at the beginning of the month was 9.83 feet and the level at the end was 8.22. The average pH concentration was 6.92 S.U. and average total alkalinity concentration was 243 mg/L. 150 pounds of soda ash were added. Zero gallons of supernatant were decanted. An average total solids concentration of the sludge in the sludge holding tanks was 0.79%

Significant Storm/Hydraulic Loading Events

During September, there were two (2) storm events resulting in daily precipitation amounts greater than 0.5 inches measured during a 24 hour period. These events occurred on September 10th and 29th with precipitation volumes recorded as 0.73 and 2.13 inches, respectively. A total of 3.62 inches of rainfall was measured at the facility during September. Plant operations were adjusted to manage the precipitation to prevent exceedances of the permitted discharge limitations for Outfalls 001 and 002.

Minor Repairs and Preventative Maintenance

No unscheduled minor repairs or equipment failures were experienced during September.

2015 SEPTEMBER 3RD QUARTER- METERS FROM WEST GOSHEN - CC COLLECTION												
Precip		WESTTOWN WAY		ELLIS LANE		PAOLI PIKE		WILSON DRIVE		SUMMIT	NET	
Inches	DATE	READING	GPD	READING	GPD	READING	GPD	READING	GPD	GPD	FLows	DATE
0.00	09/01/15	2,152,935	1,130,667	9,459,250	95,117	5,930,152	60,063	5,058,571	95,627	24,000	879,860	09/01/15
0.00	09/02/15	2,153,803	868,000	9,466,450	72,000	5,934,852	47,000	5,067,551	89,800	24,000	659,200	09/02/15
0.00	09/03/15	2,154,666	863,000	9,473,460	70,100	5,939,442	45,900	5,076,572	90,210	24,000	656,790	09/03/15
0.00	09/04/15										860,940	09/04/15
0.00	09/05/15										860,940	09/05/15
0.00	09/06/15										860,940	09/06/15
0.00	09/07/15										860,940	09/07/15
0.00	09/08/15	2,158,664	799,600	9,509,070	71,220	5,962,102	45,320	5,115,168	77,192	24,000	605,868	09/08/15
0.00	09/09/15	2,159,518	854,000	9,516,610	75,400	5,966,942	48,400	5,124,381	92,130	24,000	638,070	09/09/15
0.65	09/10/15	2,160,381	863,000	9,524,230	76,200	5,972,152	52,100	5,134,303	99,220	24,000	635,480	09/10/15
0.00	09/11/15	2,161,286	905,000	9,531,790	75,600	5,977,312	51,600	5,143,532	92,290	24,000	685,510	09/11/15
0.40	09/12/15										685,510	09/12/15
0.00	09/13/15										685,510	09/13/15
0.00	09/14/15	2,163,870	861,333	9,554,860	76,900	5,990,802	62,167	5,168,034	81,673	24,000	640,593	09/14/15
0.00	09/15/15	2,164,729	859,000	9,561,500	66,400	5,995,422	46,200	5,176,857	88,230	24,000	658,170	09/15/15
0.00	09/16/15	2,165,573	844,000	9,568,280	67,800	6,000,082	46,600	5,186,253	93,960	24,000	635,640	09/16/15
0.00	09/17/15	2,166,420	847,000	9,574,910	66,300	6,004,732	46,500	5,194,620	83,670	24,000	650,530	09/17/15
0.00	09/18/15	2,167,281	861,000	9,581,691	67,810	6,009,288	45,560	5,203,206	85,860	24,000	661,770	09/18/15
0.00	09/19/15										661,770	09/19/15
0.00	09/20/15										661,770	09/20/15
0.00	09/21/15	2,169,746	821,667	9,602,661	69,900	6,022,858	45,233	5,224,780	71,913	24,000	634,620	09/21/15
0.00	09/22/15	2,170,595	828,500	9,609,451	67,900	6,027,248	43,900	5,233,183	84,030	24,000	632,670	09/22/15
0.00	09/23/15	2,171,428	833,000	9,616,091	66,400	6,031,428	41,800	5,240,704	75,210	24,000	649,590	09/23/15
0.00	09/24/15	2,172,272	844,000	9,622,794	67,030	6,035,878	44,500	5,248,743	80,390	24,000	652,080	09/24/15
0.00	09/25/15	2,173,121	849,000	9,629,347	65,530	6,040,213	43,350	5,256,577	78,340	24,000	661,780	09/25/15
0.00	09/26/15										661,780	09/26/15
0.00	09/27/15										661,780	09/27/15
0.00	09/28/15	2,175,572	817,000	9,649,437	66,967	6,053,483	44,233	5,276,697	67,067	24,000	638,733	09/28/15
1.75</												

2015 SEPTEMBER 3RD QUARTER- METERS FROM WEST GOSHEN - CC COLLECTION

HERSHEY'S MILL		ASHBRIDGE		HICKS METER		RESERVOIR		BARKWAY			
READING	GPD	READING	GPD	READING	GPD	READING	GPD	READING	GPD		
43,201,920	73,208	2,194,625	78,133	23,778,732	297,113	79,542,926	782,703	3,722,903	11,770		
43,257,896	55,976	2,195,222	59,700	23,804,144	254,120	79,604,507	615,810	3,723,767	8,640		
43,312,360	54,464	2,195,786	56,400	23,830,438	262,940	79,665,991	614,840	3,724,569	8,020		
43,575,760	52,680	2,198,595	56,180	23,932,314	203,752	79,939,164	546,346	3,728,771	8,404		
43,628,940	53,180	2,199,158	56,300	23,957,406	250,920	79,999,855	606,910	3,729,597	8,260		
43,681,796	52,856	2,199,732	57,400	23,983,412	260,060	80,062,880	630,250	3,730,503	9,060		
43,896,748	53,738	2,202,089	58,925	24,074,102	226,725	80,298,099	588,048	3,734,187	9,210		
43,949,464	52,716	2,202,712	62,300	24,099,948	258,460	80,356,222	581,230	3,735,140	9,530		
44,000,112	50,648	2,203,267	55,500	24,125,348	254,000	80,420,008	637,860	3,736,070	9,300		
44,048,640	48,528	2,203,817	55,000	24,151,374	260,260	80,480,130	601,220	3,736,928	8,580		
44,099,688	51,048	2,204,389	57,200	24,176,582	252,080	80,539,550	594,200	3,737,816	8,880		
44,259,076	53,129	2,206,112	57,433	24,234,804	194,073	80,702,440	542,967	3,740,570	9,180		
44,309,772	50,696	2,206,677	56,500	24,259,080	242,760	80,762,157	597,170	3,741,535	9,650		
44,356,692	46,920	2,207,245	56,800	24,282,378	232,980	80,819,437	572,800	3,742,290	7,550		
44,405,880	49,188	2,207,821	57,600	24,305,564	231,860	80,876,715	572,780	3,743,454	11,640		
44,452,912	47,032	2,208,385	56,400	24,330,194	246,300	80,935,279	585,640	3,744,469	10,150		
44,601,132	49,407	2,210,166	59,367	24,387,912	192,393	81,091,330	520,170	3,747,401	9,773		
44,653,640	52,508	2,210,791	62,500	24,413,030	251,180	81,151,905	605,750	3,748,412	0		
44,707,688	54,048	2,211,503	71,200	24,441,624	285,940	81,222,522	706,170	3,749,332	9,200		
	74,618		83,095		257,550		636,934		23,879		
	1,076,588		1,213,933		4,915,467		12,139,797		190,676		
	20		20		20		20		20		

2015 SUMMARY OF METER READINGS

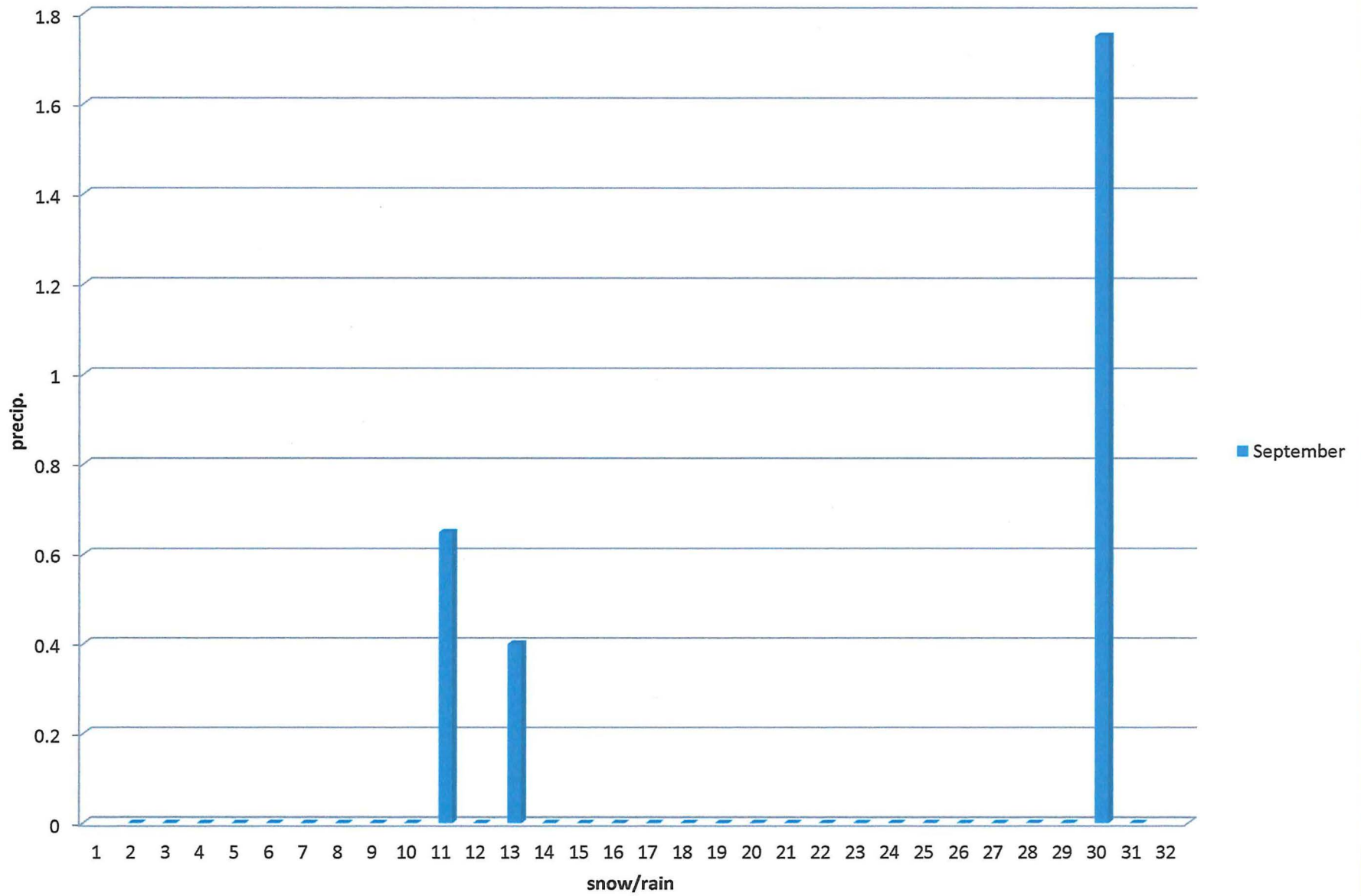
	WESTTOWN WAY	ELLIS LANE	PAOLI PIKE	WILSON DRIVE	SUMMIT	HERSHEY MILL	ASHBRIDGE	HICKS	RESERVOIR	BARKWAY
JANUARY	1,037,476	93,837	60,552	66,143	24,000	64,460	60,156	251,166	706,594	11,242
FEBRUARY	1,023,411	90,015	59,017	64,695	24,000	69,673	64,656	265,565	683,531	11,872
MARCH	1,212,666	123,312	70,912	70,480	24,000	94,740	81,101	300,634	836,728	12,978
APRIL	1,035,131	96,381	64,670	58,196	24,000	73,758	69,102	255,415	687,609	9,616
MAY	950,383	83,945	62,532	56,242	24,000	64,613	64,751	238,820	640,954	9,901
JUNE	973,259	88,786	70,960	87,499	24,000	61,541	64,699	270,354	681,599	10,009
JULY	936,889	87,530	49,868	83,662	24,000	61,627	61,876	248,890	653,268	9,436
AUGUST	865,647	71,847	42,991	77,279	24,000	54,843	56,622	239,822	610,457	9,009
SEPTEMBER	876,374	73,884	48,951	85,057	24,000	74,618	83,095	257,550	636,934	23,879
OCTOBER										
NOVEMBER										
DECEMBER										
Total Flows										
Monthly Ave	990,137	89,949	58,939	72,139	24,000	68,875	67,340	258,691	681,964	11,994

To
West Goshen 769,110

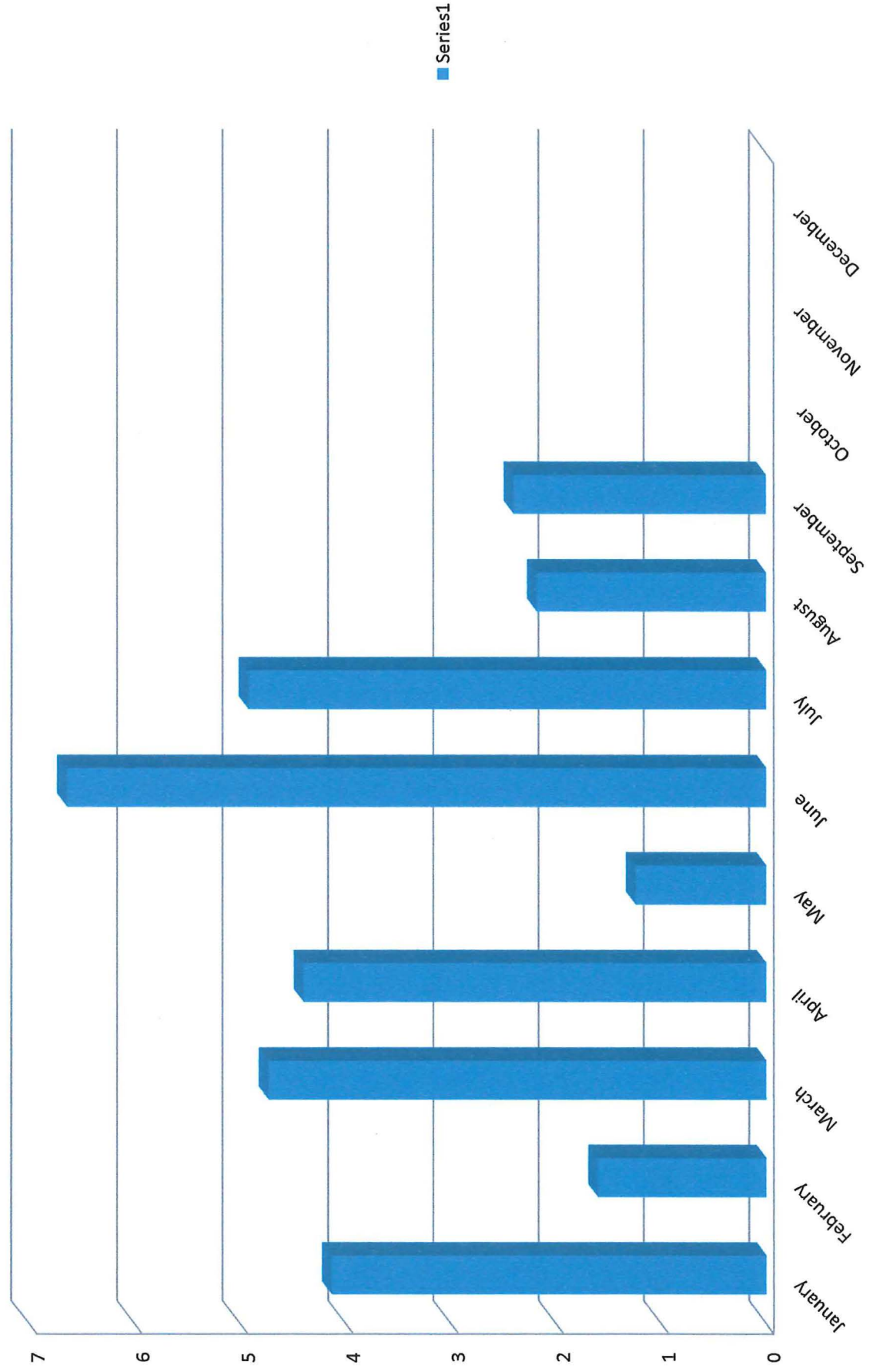
2015 SUMMARY OF METER READINGS

	WESTTOWN WAY	ELLIS LANE	PAOLI PIKE	WILSON DRIVE	SUMMIT
JANUARY	1,037,476	93,837	60,552	66,143	24,000
FEBRUARY	1,023,411	90,015	59,017	64,695	24,000
MARCH	1,212,666	123,312	70,912	70,480	24,000
APRIL	1,035,131	96,381	64,670	58,196	24,000
MAY	950,383	83,945	62,532	56,242	24,000
JUNE	973,259	88,786	70,960	87,499	24,000
JULY	936,889	87,530	49,868	83,662	24,000
AUGUST	865,647	71,847	42,991	77,279	24,000
SEPTEMBER	876,374	73,884	48,951	85,057	24,000
OCTOBER					
NOVEMBER					
DECEMBER					
Total Flows					
Monthly Ave	990,137	89,949	58,939	72,139	24,000

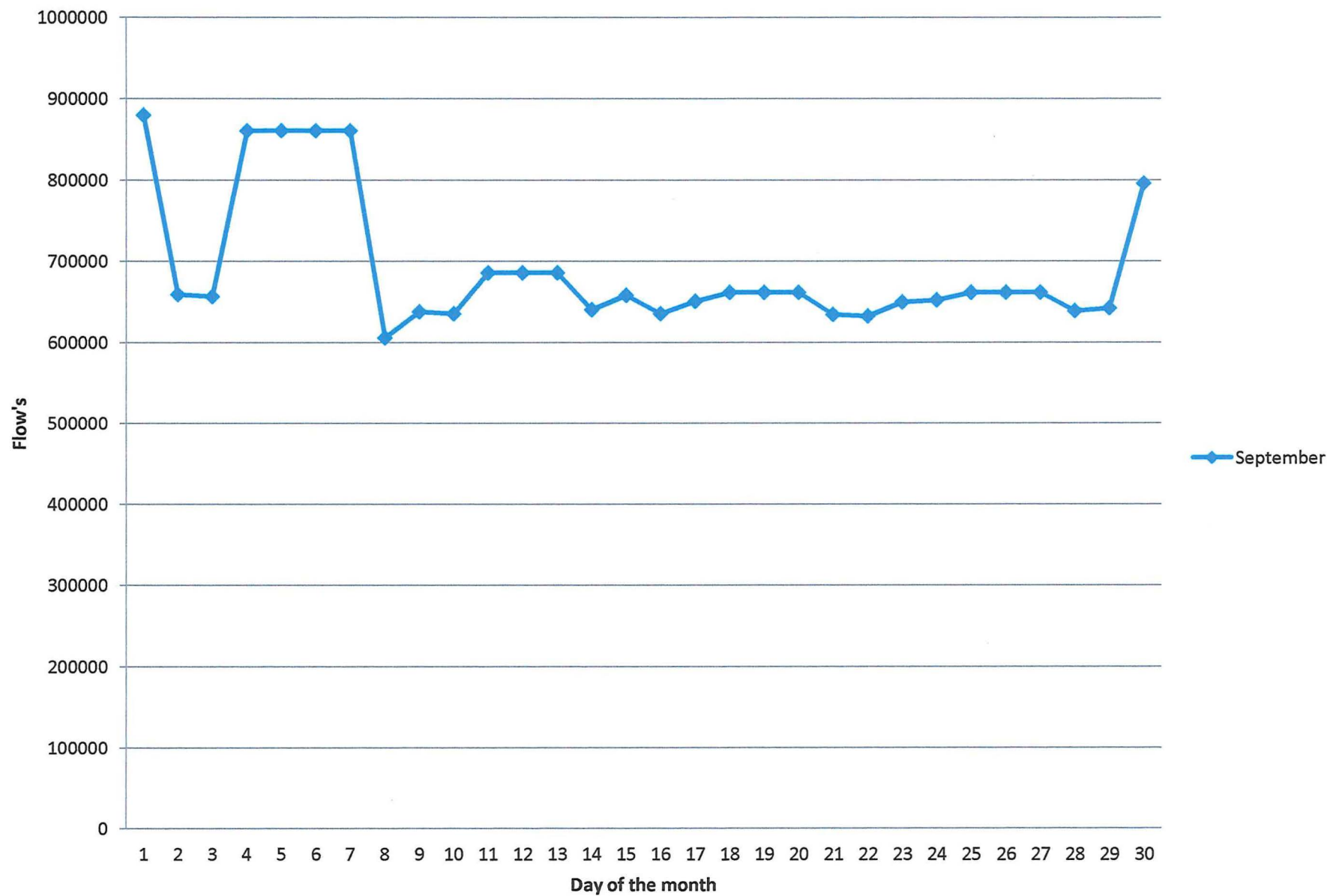
Sept. Precip. 2.40 - 2015



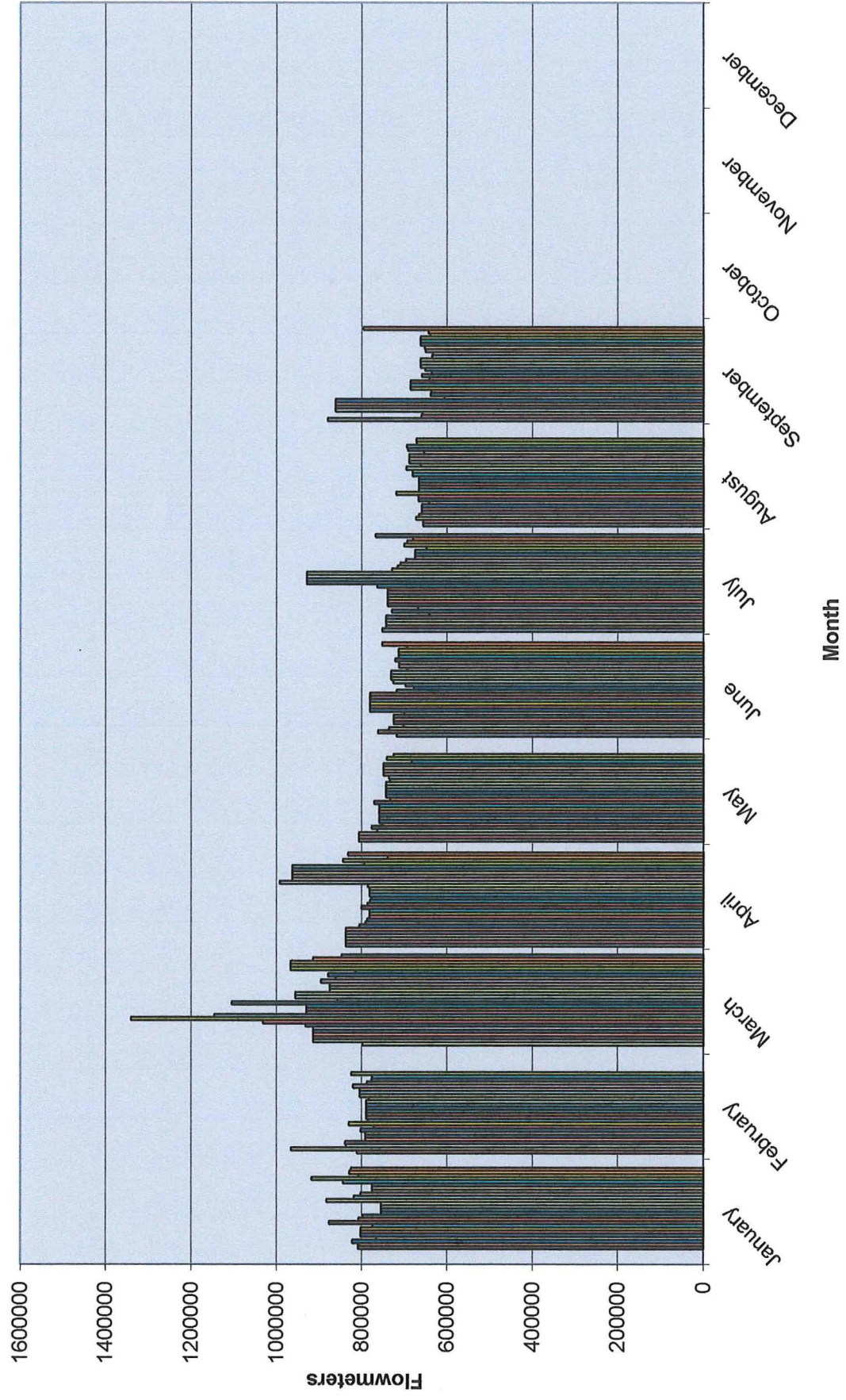
2015 Monthly Precipitation



Flowmeters September 2015



Monthly Totals 2015 Jan-Dec



Draft
EAST GOSHEN TOWNSHIP MUNICIPAL AUTHORITY
MEETING MINUTES
August 10, 2015

The East Goshen Township Municipal Authority held their regular public meeting on Monday, August 10, 2015 at 7:00 pm at the East Goshen Township building. Members in attendance were: Jack Yahraes, Fran Beck, Dana Pizzaro and Ed McAssey. Also in attendance were: Rick Smith (Township Manager), Mike Ellis (Pennoni), and Pat McKenna (Attorney).

COMMON ACRONYMS:

<i>BFES – Big Fish Environmental Services</i>	<i>MA – Municipal Authority</i>
<i>BOS – Board of Supervisors</i>	<i>NPDES – National Pollutant Discharge Elimination System</i>
<i>CB – Conservancy Board</i>	<i>PC – Planning Commission</i>
<i>DEP – Department of Environmental Protection</i>	<i>PM – Prevention Maintenance</i>
<i>EPA – Environmental protection Agency</i>	<i>PR – Park & Recreation Board</i>
<i>HC – Historical Commission</i>	<i>RCSTP – Ridley Creek Sewer Treatment Plant</i>
<i>I&I – Inflow & Infiltration</i>	<i>SBR – Sequencing Batch Reactor</i>
<i>LCSTP – Lockwood Chase Sewer Treatment Plant</i>	<i>SSO – Sanitary System Overflow</i>
	<i>WAS – Waste Activated Sludge</i>

Call to Order & Pledge of Allegiance

Jack called the meeting to order at 7:00 pm and led those present in the Pledge of Allegiance. There was a moment of silence to remember the troops and all veterans. Jack asked if anyone would be recording the meeting and there was no response.

Chairman's Report/Other Members' Reports

Jack reported that he attended the West Goshen meeting and they discussed the recent SSO in West Goshen. He also noted that long-time resident and former Historic Commission member Ben Rohrbeck had passed away over the weekend.

Sewer Reports

1. Director of Public Works

The Public Works Department is getting Cooper Circle and Supplee Valley ready for resurfacing.

2. Pennoni Engineer's Report

Mike Ellis provided the following report:

Invoices:

Invoices with summaries are provided under separate cover.

Ridley Creek Sewage Treatment Plant (RCSTP):

No activity since the last report.

Reservoir Rd Pump Station:

Continuing with final design. Soft digs will be scheduled to locate the oil and gas pipelines.

3. Big Fish Environmental Services – We did not receive Scott's Report. Rick will contact Scott and distribute report upon receipt.

1
2 **Approval of Minutes**

3 Fran moved to accept the minutes of July 13, 2015 as presented. Jack seconded the motion. The
4 motion passed unanimously.
5

6 **Approval of Invoices**

7 1. Ed moved to approve payment of the following Pennoni invoices:

- 8 a. Pennoni #646590 \$ 373.75
9 b. Pennoni #646591 \$ 4,715.25

10 Fran seconded the motion. The motion passed unanimously.
11

12 2. Jack moved to approve payment of the Maillie invoice #10000046810 in the amount of
13 \$8,900. Fran seconded the motion. The motion passed unanimously.
14

15 **Liaison Reports**

16 Rick advised that the final Comp Plan Task Force meeting would be held on August 17 and that
17 it was expected that the Comp Plan would be adopted in October.
18

19 **Financial Reports**

20 Jon Altshul provided the following report: In July, the Municipal Authority recorded \$20,130 in
21 revenues (include a \$10,000 transfer from sewer operating and \$22,043 in expenses) for a
22 negative variance of -\$1,912. As of July 31st, the fund balance was \$1,537,461, of which
23 \$1,488,448 is in the construction account.
24

25 **Goals**

26 None
27

28 **New Business**

29 Rick reported that there may be a future connection for a new lot on Manley Road.
30

31 **Adjournment**

32 There being no further business, Jack moved to adjourn the meeting. Ed seconded the motion.
33 The motion passed unanimously. The meeting was adjourned at 7:24 pm.
34

35 Respectfully submitted,
36
37

38 Rick Smith
39 Township Manager



INVOICE

Newark, DE
302-655-4451 Fax: 302-654-2895

Remit Payment To:
Pennoni
P.O. Box 827328
Philadelphia, PA 19182-7328

East Goshen Municipal Authority
1580 Paoli Pike
West Chester, PA 19380-6199
Attention: Louis F. Smith, Twp Mgr.

Invoice # : 655756
Invoice Date : 09/30/2015
Project : EGMA1501
Project Name : 2015 General Services

For Services Rendered through: 9/20/2015

Prepared September Engineer's Report, reviewed operator's August RCSTP operations report, and provided budgetary pricing to Township for sewer main replacements and cured-in-place pipe lining.

Phase : **** -- Professional Services

Total Phase : **** -- Professional Services

Labor : 230.00
Expense : 0.00
Phase Total : 230.00

Amount Due This Invoice

\$230.00

Fee : 12,000.00
Prior Billings : 8,616.50
Current Billings : 230.00
Total Billings : 8,846.50

Phase : **** -- Professional Services

Labor Class	Hours/ Units	Rate	Amount
Authority Engineer	2.00	115.00	230.00
Labor Total:	2.00		230.00

Total Phase : **** -- Professional Services

Labor : \$230.00
Expense : \$0.00

Total Project : EGMA1501 -- 2015 General Services

Labor : \$230.00
Expense : \$0.00

olc RS 10-9-15

East Goshen Municipal Authority
EGMA1501 Invoice Summary
Invoice Date 09/30/2015

Project: EGMA1501
Pennoni Job No.: 2015 General Services
Invoice No: 655756
Invoice Period: 8/17/2015 to 9/20/2015
Initial Authorization: \$ 12,000.00 **Date:** 9/30/2015
Contract Amount: \$ 12,000.00
Previously Invoiced: \$ 8,616.50
Current Invoice: \$ 230.00
Invoiced to Date (\$): \$ 8,846.50
Invoiced to Date (%): 74%
Remaining Budget (\$): \$ 3,153.50
Remaining Budget (%): 26%

Budget by Phase:

2015 General
Services
Phase Name:
Phase Budget: \$ 12,000.00
Previously Invoiced: \$ 8,616.50
Current Invoice: \$ 230.00
Invoiced to Date (\$): \$ 8,846.50
Invoiced to Date (%): 74%
Remaining Budget (\$): \$ 3,153.50
Remaining Budget (%): 26%

Comments: Prepared September Engineer's Report, reviewed operator's August RCSTP operations report, and provided budgetary pricing to Township for sewer main replacements and cured-in-place pipe lining.



INVOICE

Newark, DE
302-655-4451 Fax: 302-654-2895

Remit Payment To:
Pennoni
P.O. Box 827328
Philadelphia, PA 19182-7328

East Goshen Municipal Authority
1580 Paoli Pike
West Chester, PA 19380-6199
Attention: Louis F. Smith, Twp Mgr.

Invoice # : 655757
Invoice Date : 09/30/2015
Project : EGMA1502
Project Name : 2015 Semi-Annual I&I Reports

For Services Rendered through: 9/20/2015

Initial analysis of 1st month of new portable meter data from August 5-28, 2015.

Phase : **** -- Professional Services

Total Phase : **** -- Professional Services

Labor : 411.25
Expense : 0.00
Phase Total : 411.25

Amount Due This Invoice

411.25

Fee : 10,500.00
Prior Billings : 6,966.25
Current Billings : 411.25
Total Billings : 7,377.50

Phase : **** -- Professional Services

Labor Class	Hours/ Units	Rate	Amount
Authority Engineer	0.25	115.00	28.75
Associate Engineer	4.50	85.00	382.50
Labor Total:	4.75		411.25

Total Phase : **** -- Professional Services

Labor : \$411.25
Expense : \$0.00

Total Project : EGMA1502 -- 2015 Semi-Annual I&I Reports

Labor : \$411.25
Expense : \$0.00

o/c R S
10-9-15

East Goshen Municipal Authority
EGMA1502 Invoice Summary
Invoice Date 09/30/2015

Project: EGMA1502
Pennoní Job No.: 2015 Semi-Annual I&I Reports
Invoice No: **655757**
Invoice Period: 8/17/2015 to 9/20/2015
Initial Authorization: \$ 10,500.00 **Date:** 9/30/2015
Contract Amount: \$ 10,500.00
Previously Invoiced: \$ 6,966.25
Current Invoice: \$ 411.25
Invoiced to Date (\$): \$ 7,377.50
Invoiced to Date (%): 70%
Remaining Budget (\$): \$ 3,122.50
Remaining Budget (%): 30%

Budget by Phase:

Phase Name: 2015 Semi-Annual I&I Reports
Phase Budget: \$ 10,500.00
Previously Invoiced: \$ 6,966.25
Current Invoice: \$ 411.25
Invoiced to Date (\$): \$ 7,377.50
Invoiced to Date (%): 70%
Remaining Budget (\$): \$ 3,122.50
Remaining Budget (%): 30%

Comments: Initial analysis of 1st month of new portable meter data from August 5-28, 2015.



INVOICE

Newark, DE
302-655-4451 Fax: 302-654-2895

Remit Payment To:
Pennoni
P.O. Box 827328
Philadelphia, PA 19182-7328

East Goshen Municipal Authority
1580 Paoli Pike
West Chester, PA 19380-6199
Attention: Louis F. Smith, Twp Mgr.

Invoice # : 655832
Invoice Date : 09/30/2015
Project : EGMA1504
Project Name : Reservoir Rd PS Design &
Permitting

For Services Rendered through: 9/20/2015

Phase 11 - Progressed to approx 90% complete design plans including electrical, controls, building foundation, architectural, site grading, stormwater management, and erosion and sediment controls; progressed to approx 75% complete stormwater management calculations, report, and BMP design; continued preparation of bid document and specifications; submitted approx 90% plans to Township for review and attended review meeting with Township Manager and Codes Officer.

Phase 12 - Prepared and submitted Act 14 notifications to East Goshen Township, West Goshen Township, and Chester County Planning Commission; continued with preparation of PADEP Part 2 Water Quality Management permit application and PADEP GP-5 "Utility Line Stream Crossings" and GP-8 "Temporary Road Crossings (across streams)" permit applications; initiated preparation of NPDES permit application; prepared response to PennDOT's comments on HOP application for pipeline soft dig test pits; evaluated floodplain filling permit and code requirements in coordination with Certified Floodplain Manager (M. Gordon); and initiated preparation of limited pre- and post-development floodplain hydraulic analysis.

Phase : 11 -- Final Design

Total Phase : 11 -- Final Design

Labor :	21,052.25
Expense :	7,216.00
Phase Total :	28,268.25

Phase : 12 -- Permitting

Total Phase : 12 -- Permitting

Labor :	6,247.50
Expense :	0.00
Phase Total :	6,247.50

Amount Due This Invoice

\$34,515.75

Fee :	135,800.00
Prior Billings :	64,696.75
Current Billings :	34,515.75
Total Billings :	99,212.50

OK RS
10-9-15

Continued on next page...

INVOICES DUE ON RECEIPT. Invoices outstanding over 30 days will have a Service Charge of 1 1/2% per month.

...Continued from previous page

Phase : 11 -- Final Design

Labor		<i>Hours/ Units</i>	<i>Rate</i>	<i>Amount</i>
<u>Class</u>				
Authority Engineer		17.75	115.00	2,041.25
Senior Engineer		2.00	110.00	220.00
Project Engineer		43.25	97.00	4,195.25
Staff Engineer		11.00	90.00	990.00
Staff Engineer		3.00	90.00	270.00
Associate Engineer		77.75	85.00	6,608.75
Graduate Engineer		26.50	77.00	2,040.50
Engineering Technician II		25.00	77.00	1,925.00
Engineering Technician II		11.50	77.00	885.50
Engineering Technician I		28.00	67.00	1,876.00
Labor Total:		245.75		21,052.25

Expenses

<u>Description</u>		<u>Units</u>	<u>Rate</u>	<u>Amount</u>
Engineering Servs-direct	08/27/2015		Carew Associates, Inc.	7,216.00
<i>Subconsultant Total</i>				7,216.00
Expense Total:				\$7,216.00

Total Phase : 11 -- Final Design

Labor : \$21,052.25
Expense : \$7,216.00

Phase : 12 -- Permitting

Labor		<i>Hours/ Units</i>	<i>Rate</i>	<i>Amount</i>
<u>Class</u>				
Authority Engineer		7.00	115.00	805.00
Project Engineer		8.00	97.00	776.00
Senior Enviromental Scientist		30.75	90.00	2,767.50
Associate Engineer		16.00	85.00	1,360.00
Engineering Technician II		7.00	77.00	539.00
Labor Total:		68.75		6,247.50

Total Phase : 12 -- Permitting

Labor : \$6,247.50
Expense : \$0.00

Total Project : EGMA1504 -- Reservoir Rd PS Design & Permitting

Labor : \$27,299.75
Expense : \$7,216.00

INVOICES DUE ON RECEIPT. Invoices outstanding over 30 days will have a Service Charge of 1 1/2% per month.

East Goshen Municipal Authority
EGMA1504 Invoice Summary
Invoice Date 09/30/2015

Project: EGMA1504
Pennoni Job No.: Reservoir Rd PS Design & Permitting
Invoice No: 655832
Invoice Period: 8/17/2015 to 9/20/2015
Initial Authorization: \$ 167,120.00 **Date:** 9/30/2015
Contract Amount: \$ 167,120.00
Previously Invoiced: \$ 86,644.50
Current Invoice: \$ 34,515.75
Invoiced to Date (\$): \$ 121,160.25
Invoiced to Date (%): 72%
Remaining Budget (\$): \$ 45,959.75
Remaining Budget (%): 28%

Budget by Phase:

Phase Name:	Final Design	Phase 11
Phase Budget:	\$ 47,400.00	
Previously Invoiced:	\$ 10,957.25	
Current Invoice:	\$ 28,268.25	
Invoiced to Date (\$):	\$ 39,225.50	
Invoiced to Date (%):	83%	
Remaining Budget (\$):	\$ 8,174.50	
Remaining Budget (%):	17%	

Comments: Phase 11 - Progressed to approx 90% complete design plans including electrical, controls, building foundation, architectural, site grading, stormwater management, and erosion and sediment controls; progressed to approx 75% complete stormwater management calculations, report, and BMP design; continued preparation of bid document and specifications; submitted approx 90% plans to Township for review and attended review meeting with Township Manager and Codes Officer.

East Goshen Municipal Authority
EGMA1504 Invoice Summary
Invoice Date 09/30/2015

Project: EGMA1504
Pennoni Job No.: Reservoir Rd PS Design & Permitting
Invoice No: 655832
Invoice Period: 8/17/2015 to 9/20/2015
Initial Authorization: \$ 167,120.00 **Date:** 9/30/2015
Contract Amount: \$ 167,120.00
Previously Invoiced: \$ 86,644.50
Current Invoice: \$ 34,515.75
Invoiced to Date (\$): \$ 121,160.25
Invoiced to Date (%): 72%
Remaining Budget (\$): \$ 45,959.75
Remaining Budget (%): 28%

Budget by Phase:

Phase Name:	Permitting	Phase 12
Phase Budget:	\$ 15,800.00	
Previously Invoiced:	\$ 2,697.00	
Current Invoice:	\$ 6,247.50	
Invoiced to Date (\$):	\$ 8,944.50	
Invoiced to Date (%):	57%	
Remaining Budget (\$):	\$ 6,855.50	
Remaining Budget (%):	43%	

Comments:

Phase 12 - Prepared and submitted Act 14 notifications to East Goshen Township, West Goshen Township, and Chester County Planning Commission; continued with preparation of PADEP Part 2 Water Quality Management permit application and PADEP GP-5 "Utility Line Stream Crossings" and GP-8 "Temporary Road Crossings (across streams)" permit applications; initiated preparation of NPDES permit application; prepared response to PennDOT's comments on HOP application for pipeline soft dig test pits; evaluated floodplain filling permit and code requirements in coordination with Certified Floodplain Manager (M. Gordon); and initiated preparation of limited pre- and post-development floodplain hydraulic analysis.



Gawthrop Greenwood, PC
Attorneys at Law

17 East Gay Street, Suite 100 | (p) 610-696-8225
West Chester, PA 19381-0562 | (f) 610-344-0922
gglaw@gawthrop.com | www.gawthrop.com

East Goshen Municipal Authority
1580 Paoli Pike
West Chester PA 19380

Page: 1
09/09/2015
Client No: 6604-001R
Invoice No. 135684

General Authority Services

Fees

Hours

08/10/2015

PMM

Review and analyze meeting packet in preparation for meeting;
Attend Authority meeting.

1.30

For Current Services Rendered

1.30

260.00

Recapitulation

Timekeeper

Patrick M. McKenna

Hours

1.30

Hourly Rate

\$200.00

Total

\$260.00

Previous Balance

\$300.00

Total Current Charges

260.00

08/13/2015

Payment

-300.00

Balance Due

\$260.00

OK RS 10-9-15

To ensure proper credit, please write client number on
your check when returning payment. Thank You.
A finance charge of 1.25% per month (15% annually) may be
charged on balances not paid 60 days after the invoice date.

Memo

To: Municipal Authority
From: Jon Altshul
Re: MA September Financial Reports
Date: October 6, 2015

In September, the Municipal Authority recorded \$23,725 in revenues (including tap-in fees for Goshen Meadows and for 1606 Atlee Drive) and \$19,836 in expenses (including \$7,667 for the quarterly chargeback for administrative overhead and \$11,709 Reservoir Road Pump Station engineering), for a positive variance of \$3,889. As of September 30st, the fund balance was \$1,536,091, of which \$1,472,271 is in the main construction account.

A complete list of all year-to-date expenses and revenues is provided.

**EAST GOSHEN TOWNSHIP
1580 PAOLI PIKE
WEST CHESTER, PA
Municipal Authority
September 2015**

Account Title	Acct #	Annual Budget	Month To Date Actual	Year To Date Actual
MUNICIPAL AUTHORITY BEGINNING FUND BALANCE			1,532,201.91	
RCSTP BUDGET				
REVENUE				
INTEREST EARNED - RCSTP EXPANSION	07341 1020	1,600.00	124.25	1,144.30
GRANT REVENUE	07392 0800	0.00	0.00	0.00
TOTAL REVENUE		1,600.00	124.25	1,144.30
EXPENSES				
R.C.-CAP. PROJ.-ENGINEER	07424 7451	0.00	0.00	0.00
R.C. CAP EXPANSION GEN'L CONTRACTOR	07424 7452	0.00	0.00	0.00
R.C. CAP EXPANSION - ELECTRICAL	07424 7453	0.00	0.00	0.00
R.C. CAP EXP CONTINGENCY CAPITAL	07424 7454	0.00	0.00	0.00
R.C. CAP EXP CONTINGENCY ONGOING	07424 7455	0.00	0.00	0.00
R.C. CAP EXP ADDITIONAL CONTINGENCY	07424 7456	0.00	0.00	0.00
TRANSFER TO SEWER SINKING FUND	07492 0550	0.00	0.00	0.00
TRANSFER TO AUTHORITY CAP FUND	07492 0990	0.00	0.00	0.00
TOTAL EXPENSES		0.00	0.00	0.00
RCSTP NET RESULT		1,600.00	124.25	1,144.30

OPERATING BUDGET

EAST GOSHEN TOWNSHIP
1580 PAOLI PIKE
WEST CHESTER, PA
Municipal Authority
September 2015

Account Title	Acct #	Annual Budget	Month To Date Actual	Year To Date Actual
REVENUE				
INTEREST EARNINGS	07341 1000	15.00	0.85	7.69
C.C. TAPPING FEES	07364 1100	0.00	21,600.00	27,600.00
R.C.TAPPING FEES	07364 1110	14,296.00	2,000.00	16,296.00
CONNECTION FEES - SEWER	07364 1130	0.00	0.00	1,268.64
MISCELLANEOUS REVENUE	07380 1000	0.00	0.00	423.36
TRANSFER FROM SEWER OPERATING	07392 0500	105,105.00	0.00	20,000.00
TOTAL REVENUE		119,416.00	23,600.85	65,595.69
EXPENSES				
ADMINISTRATIVE WAGES	07424 1400	33,323.00	7,666.80	24,251.00
MISCELLANEOUS EXPENSE	07424 3000	3,000.00	0.00	1,468.05
MUNIC.AUTH.-AUDITING	07424 3110	10,984.00	0.00	8,900.00
ENGINEERING SERVICES	07424 3130	37,300.00	460.00	31,972.00
LEGAL SERVICES	07424 3140	9,000.00	0.00	2,680.00
M.C.-DVRFA-DEBT SERVICE	07471 1000	23,240.00	0.00	0.00
M.C.-DVRFA-INTEREST PAYMN	07472 1000	4,169.00	0.00	0.00
M.C.-DVRFA-INTEREST PAYMN	07472 1010	0.00	0.00	0.00
TOTAL EXPENSES		121,016.00	8,126.80	69,271.05
OPERATING NET RESULT		(1,600.00)	15,474.05	(3,675.36)

CAPITAL BUDGET

**EAST GOSHEN TOWNSHIP
1580 PAOLI PIKE
WEST CHESTER, PA
Municipal Authority
September 2015**

Account Title	Acct #	Annual Budget	Month To Date Actual	Year To Date Actual
REVENUE				
DCED GRANT	07354 0400	0.00	0.00	37,162.00
LOAN PROCEEDS-SEWER PROJECT	07393 1001	0.00	0.00	0.00
TRANSFER FROM SEWER CAP RESERVE	07392 0900	0.00	0.00	0.00
 TOTAL REVENUE		 0.00	 0.00	 37,162.00
 EXPENSES				
MARYDELL PUMP STATION - ENGINEER	07425 1000	0.00	0.00	0.00
MARYDELL PUMP STATION -CONSTRUCTION	07425 2000	0.00	0.00	0.00
MANHOLE COVER REPLACEMENTS	07424.7405	0.00	0.00	0.00
C.C. CAPITAL - COLLECTION	07424.7420	0.00	0.00	0.00
LOCHWOOD ABANDONMENT ENGINEER	07424 7475	0.00	0.00	0.00
LOCHWOOD ABANDONMENT CONSTRUCTION	07424 7476	0.00	0.00	0.00
LOCHWOOD ELIMINATION PHASE 2	07424 7477	0.00	0.00	0.00
HERSHEY MILL STATION - ENGINEER	07426 1000	0.00	0.00	0.00
HERSHEY MILL STATION - CONSTRUCTION	07426 2000	0.00	0.00	0.00
RESERVE PUMP STATION - ENGINEER	07427 1000	0.00	0.00	0.00
RESERVE PUMP STATION - CONSTRUCTION	07427 2000	0.00	0.00	0.00
RESERVOIR PUMP STATION - ENGINEER	07428 1000	100,000.00	11,709.00	87,716.25
RESERVOIR PUMP STATION CONSTRUCTION	07428 2000	0.00	0.00	0.00
 TOTAL EXPENSES		 100,000.00	 11,709.00	 87,716.25
 CAPITAL NET RESULT		 (100,000.00)	 (11,709.00)	 (50,554.25)
MUNICIPAL AUTHORITY ENDING FUND BALANCE			1,536,091.21	

East Goshen Township General Ledger

Report Date 10/05/15

GL Transaction Details

PAGE 1

MGRP18 run by BRIAN

11 : 34 AM

Acct #	Per	Src	Trx #	Debits	Credits	Beg/End Bal	Date	Check/Ref #	ID #	Name/Description
07341-1000			INTEREST EARNINGS			0.00				
	1501	JE	46156		1.44		02/03/15	INTEREST		INTEREST EARNED JANUARY 2015 07 FUND
	1501			0.00	1.44	-1.44				
	1502		46526		1.17		03/02/15	INTEREST		INTEREST EARNED FEBRUARY 2015 07 FUND
	1502			0.00	1.17	-2.61				
	1503		46944		1.03		04/02/15	INTEREST		INTEREST EARNED MARCH 2015 07 FUND
	1503			0.00	1.03	-3.64				
	1504		47407		0.61		05/04/15	INTEREST		INTEREST EARNED APRIL 2015 07 FUND
	1504			0.00	0.61	-4.25				
	1505		47825		0.75		06/01/15	INTEREST		INTEREST EARNED MAY 2015 07 FUND
	1505			0.00	0.75	-5.00				
	1506		48334		0.64		07/02/15	INTEREST		INTEREST EARNED JUNE 2015 07 FUND
	1506			0.00	0.64	-5.64				
	1507		48782		0.56		08/03/15	INTEREST		INTEREST EARNED JULY 2015 07 FUND
	1507			0.00	0.56	-6.20				
	1508		49202		0.64		09/01/15	INTEREST		INTEREST EARNED AUGUST 2015 07 FUND
	1508			0.00	0.64	-6.84				
	1509		49635		0.85		10/02/15	INTEREST		INTEREST EARNED SEPT.2015 07 FUND

East Goshen Township General Ledger

Report Date 10/05/15

GL Transaction Details

PAGE 2

MGRP18 run by BRIAN

11 : 34 AM

Acct #	Per	Src Trx #	Debits	Credits	Beg/End Bal	Date	Check/Ref #	ID #	Name/Description
1509			0.00	0.85	-7.69				
07341-1000	****	*** *****	0.00	7.69	-7.69				
07341-1020	INTEREST	EARNED - RCSTP EXPANSION			0.00				
1501		46156		131.97		02/03/15	INTEREST		INTEREST EARNED JANUARY 2015 07 FUND
1501			0.00	131.97	-131.97				
1502		46526		119.08		03/02/15	INTEREST		INTEREST EARNED FEBRUARY 2015 07 FUND
1502			0.00	119.08	-251.05				
1503		46944		131.27		04/02/15	INTEREST		INTEREST EARNED MARCH 2015 07 FUND
1503			0.00	131.27	-382.32				
1504		47407		125.90		05/04/15	INTEREST		INTEREST EARNED APRIL 2015 07 FUND
1504			0.00	125.90	-508.22				
1505		47825		128.37		06/01/15	INTEREST		INTEREST EARNED MAY 2015 07 FUND
1505			0.00	128.37	-636.59				
1506		48334		124.75		07/02/15	INTEREST		INTEREST EARNED JUNE 2015 07 FUND
1506			0.00	124.75	-761.34				
1507		48782		129.80		08/03/15	INTEREST		INTEREST EARNED JULY 2015 07 FUND
1507			0.00	129.80	-891.14				

East Goshen Township General Ledger

Report Date 10/05/15

GL Transaction Details

PAGE 3

MGRP18 run by BRIAN

11 : 34 AM

Acct #	Per	Src	Trx #	Debits	Credits	Beg/End Bal	Date	Check/Ref #	ID #	Name/Description
07341-1020	1508	JE	49202		128.91		09/01/15	INTEREST		INTEREST EARNED AUGUST 2015 07 FUND
	1508			0.00	128.91	-1,020.05				
	1509		49635		124.25		10/02/15	INTEREST		INTEREST EARNED SEPT.2015 07 FUND
	1509			0.00	124.25	-1,144.30				
07341-1020	****	***	*****	0.00	1,144.30	-1,144.30				
07354-0400	DCED	GRANT				0.00				
	1506	RE	48107		37,162.00		06/17/15	48107 1		GRANT - RESERVOIR RD PUMP STA
	1506			0.00	37,162.00	-37,162.00				
07354-0400	****	***	*****	0.00	37,162.00	-37,162.00				
07364-1100	C.C.	TAPPING FEES				0.00				
	1505		47736		2,000.00		05/27/15	47736 1		TAP IN FEE - 1334 A PARK AVE
	1505			0.00	2,000.00	-2,000.00				
	1506		47853		2,000.00		06/03/15	47853 1		TAP-IN FEE FOR 1414 BRAMBLE LN
			47991		2,000.00		06/10/15	47991 1		TAP IN FEE FOR 14 RESERVOIR RD
	1506			0.00	4,000.00	-6,000.00				
	1509	CR	49458		21,600.00		09/21/15	249	8069 1	GOSHEN MEADOWS INVESTORS L.P.
	1509			0.00	21,600.00	-27,600.00				
07364-1100	****	***	*****	0.00	27,600.00	-27,600.00				
07364-1110	R.C.	TAPPING FEES				0.00				
	1504		47236		7,148.00		04/21/15	1123	7875 1	SUNNY RIDGE FARMS LLC
			47278		7,148.00		04/23/15	1128	7875 1	SUNNY RIDGE FARMS LLC

East Goshen Township General Ledger

Report Date 10/05/15

GL Transaction Details

PAGE 4

MGRP18 run by BRIAN

11 : 34 AM

Acct #	Per	Src	Trx #	Debits	Credits	Beg/End Bal	Date	Check/Ref #	ID #	Name/Description
1504				0.00	14,296.00	-14,296.00				
1509	RE	49423			2,000.00		09/18/15	49423 1		TAP IN FEE FOR 1606 ATLEE DR
1509				0.00	2,000.00	-16,296.00				
07364-1110	****	***	*****	0.00	16,296.00	-16,296.00				
07364-1130	CONNECTION FEES - SEWER					0.00				
1501	CR	45967			423.00		01/16/15	789	8648	1 GEORGE SMITH & CHRISTINA CONLE
	JE	45968		141.12			01/16/15	PINE ROCK		ANNUAL PINE ROCK INSTALLMENT
1501				141.12	423.00	-281.88				
1502	CR	46296			423.00		02/13/15	248	8650	1 JACOBS, ROBERT & CHERYL
		46479			423.00		02/26/15	2381	8649	1 STOFFLET, MICHAEL
	JE	46297		141.12			02/13/15	PINE ROCK		ANNUAL PINE ROCK INSTALLMENT
		46480		141.12			02/26/15	PINE ROCK		ANNUAL PINE ROCK INSTALLMENT
1502				282.24	846.00	-845.64				
1505	CR	47731			423.00		05/27/15	1124	8651	1 PAPPANO, JOSEPH & PATRICIA
1505				0.00	423.00	-1,268.64				
07364-1130	****	***	*****	423.36	1,692.00	-1,268.64				
07380-1000	MISCELLANEOUS REVENUE					0.00				
1501	JE	45968			141.12		01/16/15	PINE ROCK		ANNUAL PINE ROCK INSTALLMENT
1501				0.00	141.12	-141.12				
1502		46297			141.12		02/13/15	PINE ROCK		ANNUAL PINE ROCK INSTALLMENT
		46480			141.12		02/26/15	PINE ROCK		ANNUAL PINE ROCK INSTALLMENT
1502				0.00	282.24	-423.36				
07380-1000	****	***	*****	0.00	423.36	-423.36				

East Goshen Township General Ledger

Report Date 10/05/15

GL Transaction Details

PAGE 5

MGRP18 run by BRIAN

11 : 34 AM

Acct #	Per	Src	Trx #	Debits	Credits	Beg/End Bal	Date	Check/Ref #	ID #	Name/Description
07392-0500						0.00				
	1507		48567		20,000.00		07/16/15	DEPOSIT		DEPOSIT \$ FROM SEWER ACCT.
	1507			0.00	20,000.00	-20,000.00				
07392-0500	****	***	*****	0.00	20,000.00	-20,000.00				
07424-1400						0.00				
	1503	CD	46874	8,292.10			03/30/15	2267	425	EAST GOSHEN TOWNSHIP - GENERAL 1ST QTR.2015 REIMBURS. FR: MUN.A
	1503			8,292.10	0.00	8,292.10				
	1506		48284	8,292.10			06/30/15	2273	425	EAST GOSHEN TOWNSHIP - GENERAL 2ND QTR.2015 REIMBURSMT FR:MUN.A
	1506			8,292.10	0.00	16,584.20				
	1509		49529	8,292.10			09/25/15	2280	425	EAST GOSHEN TOWNSHIP - GENERAL 3RD QTR 2015 REIMBURSEMNT FR: MA
			49551	-8,292.10			09/25/15	2280	425	EAST GOSHEN TOWNSHIP - GENERAL VOID CK.2280
			49552	7,666.80			09/25/15	2281	425	EAST GOSHEN TOWNSHIP - GENERAL 3RD QTR.2015 REIMBURSEMNT FR: MA
	1509			7,666.80	0.00	24,251.00				
07424-1400	****	***	*****	24,251.00	0.00	24,251.00				
07424-3000						0.00				
	1501		45777	950.00			01/02/15	2260	2132	PENNSYLVANIA MUNICIPAL AUTHORITIES ASSOC 2015 ACTIVE MEMBERSHIP DUES
			46110	500.00			01/29/15	2263	2737	COMMONWEALTH OF PA ANNUAL FEE - NPDES PERMIT -CHAP.
	1501			1,450.00	0.00	1,450.00				
	1506	JE	48342	18.05			07/02/15	BANK FEE		DEPOSIT SLIP ORDER 6/6/15
	1506			18.05	0.00	1,468.05				

Report Date 10/05/15

GL Transaction Details

PAGE 6

MGRP18 run by BRIAN

11 : 34 AM

Acct #	Per	Src	Trx #	Debits	Credits	Beg/End Bal	Date	Check/Ref #	ID #	Name/Description
07424-3000	****	***	*****	1,468.05	0.00	1,468.05				
07424-3110						0.00				
	1507	CD	48553	8,900.00			07/16/15	2275		808 MAILLIE FALCONIERO & CO. EXAM.FINANCIAL STATEMENTS 12/31/
	1507			8,900.00	0.00	8,900.00				
07424-3110	****	***	*****	8,900.00	0.00	8,900.00				
07424-3130						0.00				
	1501		45953	621.50			01/15/15	2261		1052 PENNONI ASSOCIATES INC. SERVICES THRU 12/7/14 GENERAL
			46013	640.00			01/22/15	2262		1052 PENNONI ASSOCIATES INC. SERVICE THRU 11/9/14 GEN.SERVICE
	1501			1,261.50	0.00	1,261.50				
	1502		46311	5,571.50			02/13/15	2264		1052 PENNONI ASSOCIATES INC. SERVICES THRU 1/18/15 2014 CHAP.
	1502			5,571.50	0.00	6,833.00				
	1503		46649	5,685.00			03/12/15	2266		1052 PENNONI ASSOCIATES INC. SERVICES THRU 2/15/15 2014 CHAP.
	1503			5,685.00	0.00	12,518.00				
	1504		47119	4,718.75			04/15/15	2269		1052 PENNONI ASSOCIATES INC. SERV. THRU 3/22/15 2015 GEN.SER
	1504			4,718.75	0.00	17,236.75				
	1505		47583	10,136.50			05/14/15	2270		1052 PENNONI ASSOCIATES INC. SERV.THUR 4/19/15 2015 GEN.SERV
	1505			10,136.50	0.00	27,373.25				
	1506		47984	1,843.75			06/10/15	2272		1052 PENNONI ASSOCIATES INC. SERVICE THRU 5/17/15 2015 GEN.SE

East Goshen Township General Ledger

Report Date 10/05/15

GL Transaction Details

PAGE 7

MGRP18 run by BRIAN

11 : 34 AM

Acct #	Per	Src Trx #	Debits	Credits	Beg/End Bal	Date	Check/Ref #	ID #	Name/Description
1506			1,843.75	0.00	29,217.00				
1507	48553		1,921.25			07/16/15	2276	1052	PENNONI ASSOCIATES INC. SERV.THUR 6/21/15 2015 SEMI-ANN
1507			1,921.25	0.00	31,138.25				
1508	48772		373.75			08/03/15	2277	1052	PENNONI ASSOCIATES INC. SERVICES THRU 7/19/15 2015 GEN.S
1508			373.75	0.00	31,512.00				
1509	49338		460.00			09/11/15	2279	1052	PENNONI ASSOCIATES INC. SERVICE THRU 8/16/15 2015 GEN.SE
1509			460.00	0.00	31,972.00				
07424-3130	****	*** *****	31,972.00	0.00	31,972.00				
07424-3140	LEGAL SERVICES				0.00				
1503	46649		300.00			03/12/15	2265	528	GAWTHROP GREENWOOD & HALSTED LEGAL SERVICE - 1/12/15 GEN.AUT
1503			300.00	0.00	300.00				
1504	47119		840.00			04/15/15	2268	528	GAWTHROP GREENWOOD & HALSTED LEGAL SERVICE 2/6-2/9/15 GEN.AUT
1504			840.00	0.00	1,140.00				
1506	47984		860.00			06/10/15	2271	528	GAWTHROP GREENWOOD & HALSTED LEGAL SERV. 4/7-4/13/15 GEN.AUT
1506			860.00	0.00	2,000.00				
1507	48553		380.00			07/16/15	2274	528	GAWTHROP GREENWOOD & HALSTED LEGAL SERVICE 6/3-6/8/15 GEN.AU
1507			380.00	0.00	2,380.00				

East Goshen Township General Ledger

Report Date 10/05/15

GL Transaction Details

PAGE 8

MGRP18 run by BRIAN

11 : 34 AM

Acct #	Per	Src	Trx #	Debits	Credits	Beg/End Bal	Date	Check/Ref #	ID #	Name/Description
07424-3140	1508	CD	48918	300.00			08/12/15	2278	528	GAWTHROP GREENWOOD & HALSTED LEGAL SERVICES 7/13/15 GEN.AUTH
	1508			300.00	0.00	2,680.00				
07424-3140	****	***	*****	2,680.00	0.00	2,680.00				
07428-1000						0.00				
	1501		45954	137.50			01/15/15	10029	1052	PENNONI ASSOCIATES INC. SERV.THUR 12/7/14 RESERV.RD ACT
			46014	852.50			01/22/15	10030	1052	PENNONI ASSOCIATES INC. SERVICE THRU 11/9/14 RESERVOIR R ACT.537
	1501			990.00	0.00	990.00				
	1502		46312	5,382.80			02/13/15	10031	1052	PENNONI ASSOCIATES INC. SERV.THUR 1/18/15 RESERVOIR RD.P ACT 537 PLANNING
	1502			5,382.80	0.00	6,372.80				
	1503		46650	10,394.70			03/12/15	10032	1052	PENNONI ASSOCIATES INC. SERV. THRU 2/15/15 RESERVOIR RD.
	1503			10,394.70	0.00	16,767.50				
	1504		47120	18,607.75			04/15/15	10033	1052	PENNONI ASSOCIATES INC. SERV. THRU 3/22/15 RESERVOIR RD. DESIGN & PERMITTING
	1504			18,607.75	0.00	35,375.25				
	1505		47584	15,825.75			05/14/15	10034	1052	PENNONI ASSOCIATES INC. SERV.THUR 4/19/15 RESERVOIR RD. DESIGN & PERMITTING
	1505			15,825.75	0.00	51,201.00				
	1506		47990	9,249.50			06/10/15	10035	1052	PENNONI ASSOCIATES INC. SERV.THUR 5/17/15 RESERVOIR RD
	1506			9,249.50	0.00	60,450.50				

East Goshen Township General Ledger

Report Date 10/05/15

GL Transaction Details

PAGE 9

MGRP18 run by BRIAN 11 : 34 AM

Acct #	Per	Src	Trx #	Debits	Credits	Beg/End Bal	Date	Check/Ref #	ID #	Name/Description
07428-1000	1507	CD	48554	10,841.50			07/16/15	10036	1052	PENNONI ASSOCIATES INC. SERV.THURU 6/21/15 - RESERV.RD P DESIGN & PERMITTING
1507				10,841.50	0.00	71,292.00				
1508		48773		4,715.25			08/03/15	10037	1052	PENNONI ASSOCIATES INC. SERV.THURU 7/19/15 RESERVOIR RD
1508				4,715.25	0.00	76,007.25				
1509		49341		11,709.00			09/11/15	10038	1052	PENNONI ASSOCIATES INC. SERVICES THRU 8/16/15 RESERV.RD
1509				11,709.00	0.00	87,716.25				
07428-1000	****	***	*****	87,716.25	0.00	87,716.25				
Grand Total	157,410.66		104,325.35		53,085.31					

FILE

OLD BUSINESS

Memo

East Goshen Township

1580 Paoli Pike

West Chester, PA 19380

Voice (610) 692-7171

Fax (610) 425-8950

E-mail rsmith@eastgoshen.org

Date: September 15, 2015

To: Board of Supervisors

From: Rick Smith, Township Manager

Re: House Lateral Inspections

In response to a recommendation from the Municipal Authority, at your meeting on February 3, 2015 you authorized implementing a house lateral inspection as outlined below for a period of six months.

The Public Works Department would be notified of upcoming re-occupancy inspections. If the property was on public sewer they would make a visual inspection to ensure that the required caps are in place and that none of the pipes are displaced. They would check to see if I&I was an issue and if it was they would TV the lateral if possible.

Editor's Note: I&I stands for infiltration and inflow. "Infiltration" is ground water is entering the sewer system. This typically occurs at a bad joint or a broken pipe. "Inflow" is surface water entering the sewer system. This typically occurs if a clean out cap is missing or the riser pipe is broken off at grade.

There were 154 re-occupancy inspections from March 1 to August 31. Of these 63 were on public sewer and had individual laterals. Public Works did not observe any laterals that required TVing. Scheduling of the inspections was occasionally a problem, given the workload of the Public Works Department.

That being said 154 re-occupancy inspections represent less than 2% of the households in the Township and the battle against I&I is never ending.

Recommendation - Accordingly I would suggest that we continue with the program with one modification. Have the building inspectors check the sewer caps and look for evidence of I&I. If they observe evidence they would notify the Public Works Department who would TV the lateral.

F:\Data\Shared Data\Admin Dept\Township Code\Sewer - House Lateral\Memo 091515.docx

ok Per
Prof S
10-6-15

Memo

To: Municipal Authority
From: Jon Altshul
Re: Consider 2016 Municipal Authority Proposed Budget, v2
Date: September 11, 2015

Attached please find a proposed 2016 budget for the Municipal Authority. Note that this proposed budget is slightly updated from the one that was sent to you in your packet for the cancelled September meeting.

Revenues

- This budget proposes revenues of \$103,342, including \$93,832 as a transfer from the sewer operating fund and \$8,000 from four tap-in fees.

Expenses

- Expenses reflect \$9,000 for legal fees, \$38,500 for engineering and \$25,000 for a proposed engineering study about the integrity of our asbestos concrete sewer lines.
- The budget proposes to use unreserved capital funds available in the DNB First capital account (current balance is \$33,309) for the asbestos concrete study, meaning that no sewer fund transfer would be needed to cover this expense.
- The remaining expenses include \$9,500 for auditing, \$33,832 for administrative overhead, and \$28,092 for the Municipal Authority's share of debt service on the 1998 notes.
- No capital expenses are anticipated in 2016.

The projected fund balance at the end of 2016 is expected to be \$1,434,795, the majority of which represents the remaining balance of the proceeds from the 2013 notes.

I recommend that the Municipal Authority approve the 2016 proposed budget prior to the end of the current calendar year.

MUNICIPAL AUTHORITY

Beginning Fund Balance

						1,589,177	1,478,377		
Account Title	Acct #	2012 Actual	2013 Actual	2014 Actual	2015 Budget	2015 YE Proj (June)	2016 Proposed	\$ Inc '15 Proj- '16 Bud	% Inc '15 Proj-'16 Bud
REVENUE									
INTEREST EARNINGS	07341 1000	23	28	17	15	11	10	(1)	-9.1%
CAPITAL RESERVE-INTEREST	07341 1010	-	-	-	-	-	-	-	-
INTEREST EARNED - RCSTP EXPANSION	07341 1020	76	409	1,577	1,600	1,500	1,500	-	0.0%
DCED GRANT	07354 0400	-	-	-	-	37,162	-	(37,162)	-100.0%
C.C. TAPPING FEES	07364 1100	-	200	112,200	-	6,000	4,000	(2,000)	-33.3% 2 connections
R.C.TAPPING FEES	07364 1110	4,000	13,292	12,289	14,296	34,296	4,000	(30,296)	-88.3% 2 connections
M.C. LOAN PAYMENTS	07364 1120	-	-	-	-	-	-	-	-
CONNECTION FEES - SEWER	07364 1130	846	1,690	1,128	-	1,269	-	(1,269)	-100.0%
MISCELLANEOUS REVENUE	07380 1000	423	423	564	-	423	-	(423)	-100.0%
TRANSFER FROM GENERAL ACCT	07392 0100	-	-	-	-	-	-	-	-
TRANSFER FROM SEWER OPERATING	07392 0500	71,766	88,000	21,000	105,105	40,000	93,832	53,832	134.6%
TOTAL REVENUE		527,133	3,243,042	148,775	121,016	120,661	103,342	(17,319)	-14.4%
EXPENSES									
ADMINISTRATIVE WAGES	07424 1400	33,568	31,921	32,172	33,323	32,568.40	33,832	1,264	3.9%
R.C. LOAN ISSUANCE COSTS	07424 1500	-	-	-	-	-	-	-	-
MISCELLANEOUS EXPENSE	07424 3000	950	1,690	1,450	3,000	3,000	3,000	-	0.0%
MUNIC.AUTH.-AUDITING	07424 3110	7,900	8,100	10,800	10,984	10,984	9,500	(1,484)	-13.5%
ENGINEERING SERVICES	07424 3130	34,063	40,584	32,259	37,300	48,500	38,500	(10,000)	-20.6%
LEGAL SERVICES	07424 3140	7,165	12,213	7,460	9,000	9,000	9,000	-	0.0%
RESERVE PUMP STATION - ENGINEER	07427 1000	22,196	33,730	1,884	-	-	-	-	-
RESERVE PUMP STATION - CONSTRUCTION	07427 2000	-	96,740	6,323	-	-	-	-	-
RESERVOIR PUMP STATION - ENGINEER	07428 1000	358	38,447	38,286	100,000	100,000	-	(100,000)	-100.0% None
RESERVOIR PUMP STATION CONSTRUCTION	07428 2000	-	-	-	-	-	-	-	-
ASBESTOS CONCRETE ENGINEERING	07429 3130	-	-	-	-	-	25,000	25,000	Pennoni study
DIVERSION PROJ.- LEGAL	07429 3166	-	-	-	-	-	-	-	-
M.C.-DVRFA-DEBT SERVICE	07471 1000	19,600	20,720	22,120	23,240	23,240	24,920	1,680	7.2%
M.C.-DVRFA-INTEREST PAYMN	07472 1000	6,842	6,003	5,115	4,169	4,169	3,172	(997)	-23.9%
TRF TO SEWER SINKING FUND	07492 0550	-	877,000	-	-	-	-	-	-
TOTAL EXPENSES		503,858	1,706,656	157,869	221,016	231,461	146,924	(84,537)	-36.5%
NET RESULT FROM OPERATIONS		23,275	1,536,386	(9,094)	(100,000)	(110,800)	(43,582)	67,218	-60.7%
Ending Fund Balance						1,478,377	1,434,795		

SITE ENGINEERING CONCEPTS, LLC

Consulting Engineering and Land Development Services

1 October 2015

Attn: Mark A Gordon, CFM
Director of Code Enforcement/Zoning Officer
East Goshen Township
1580 Paoli Pike
West Chester, PA 19380

RE: 3 & 5 School Lane
Request for sewer service and grinder pump

Dear Mr. Gordon:

A Stormwater Management Permit Application and plan of improvements was recently delivered to you for 3 & 5 School Lane. The plan shows 2 existing undeveloped properties. A twin is proposed with each unit on a separate lot. The common wall will be located on the existing lot line separating the 2 lots. Each unit is proposed to have its own driveway, stormwater management facilities, and utilities, including public water and public sewer. Both properties are owned by TMN Properties LLC.

We have already contacted Mark Miller, Director of Public Works, and determined that there is no sewer main on School Lane to tap into. Instead, the lots are to be serviced by a main located on the properties, close to the rear property line. We have requested further information from Mr. Miller regarding existing manhole depths and existing sewer size and type. Reviewing the existing contour elevations obtained from our site survey, it appears that grinder pumps will be necessary to serve both units. This will be confirmed once we have obtained the existing manhole depths.

As you requested, please accept this letter as a formal request by TMN Properties LLC for the use of grinder pumps, as necessary, and also for sewage capacity for 2 EDUS, 1 for each property. The twins will each consist of 3 bedrooms.

Should you have any questions or need additional information, please feel free to contact me.

Thank you,



Peter L. Cokonis, P.E.

SPACE + SCIENCE



8 trillion microbeads pollute U.S. aquatic habitats daily



By Jareen Imam, CNN

⌚ Updated 8:11 AM ET, Tue September 22, 2015 | Video

Source: CNN

Story highlights

Eight trillion microbeads are entering the United States' aquatic habitats daily, a new study says

Microbeads are tiny plastic beads that can be found in hundreds of personal care products

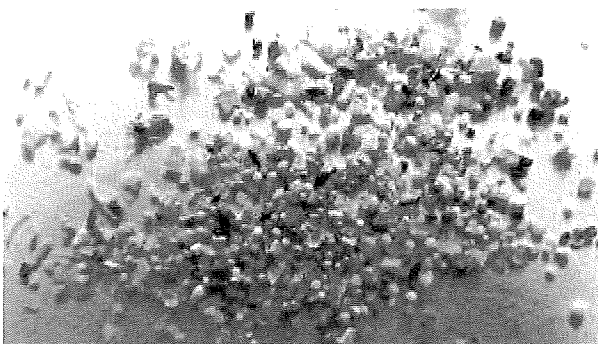
Scientists are calling for a total ban

(CNN)—Not to alarm you, but your daily morning regimen might be harming the planet's oceans.

What's the culprit? Microbeads. They are tiny, plastic beads that many companies have added to body scrubs, cosmetics, soaps -- essentially hundreds of products, to create an exfoliating sensation for users.

There's more than eight trillion microbeads entering aquatic habitats every day in the United States alone, according to a new study published in Environmental Science & Technology. It's enough microbeads to cover 300 tennis courts daily.

A microbead is any plastic that is smaller than 1 mm, about the size of a pinhead. They are designed to wash down drains, but have added to the increased microplastic debris littering the Earth's oceans and many freshwater lakes, the study states. Due to their size, plastic microbeads are difficult to clean up on a large scale.



Microbeads have even been subtly added to products like toothpaste. Despite their tiny size, they still pose a threat, according to Stephanie Green of Oregon State University and co-author of the study.

"Part of this problem can now start with brushing your teeth in the morning," she said. "Contaminants like these microbeads are not something our waste-water treatment plants were built to handle, and the overall amount of contamination is huge," she said.

The eight trillion microbeads entering the United States' aquatic habitats on a daily basis is only a fraction of what is being dumped in waste-water treatment facilities. Eight hundred trillion of these plastic beads settle into a sludge and transform into a runoff from sewage plants and go on to pollute the waterways.

"We're facing a plastic crisis and don't even know it," Green explained.

Some species of marine life mistake the small plastic particles for food, and scientists are currently examining how microplastics are affecting marine life once ingested and whether those chemicals can be transferred to humans if people consume these marine species later on, according to the National Oceanic and Atmospheric Administration (NOAA).

Chelsea Rochman of the University of California, Davis and lead author of the study, said microbeads were one of many types of microplastics to be found in the gut content of the marine wildlife that they examined.

"We've demonstrated in previous studies that microplastic of the same type, size and shape as many microbeads can transfer contaminants to animals and cause toxic effects," Rochman said. "We argue that the scientific evidence regarding microplastic supports legislation calling for a removal of plastic microbeads from personal care products."

Scientists from the study are calling for a complete ban on microbeads. They say that public support for the effort is also growing. Companies such as Unilever and Johnson & Johnson have pledged to phase out the use of microbeads in their personal care products.

In June 2014, the state of Illinois became the first state to ban the production, manufacture and sale of products that contain plastic microbeads, according to NOAA. Although the study argues that the legislation does not go far enough to eliminate microbeads that claim to be "biodegradable" but are not. Connecticut, New Jersey, Colorado have implemented regulations or bans on the plastic products as well.

Authors of the study are calling for new wording in microbead legislation that will ensure a total ban on materials that are "persistent, bioaccumulative, or toxic" to be added to products that are meant to be washed down the drain.

CNN left a message Saturday with the Personal Care Products Council, an industry group.