



HERSHEY'S MILL DAM PARK OPEN SPACE MASTER PLAN

East Goshen, Chester County Pennsylvania



PUBLIC MEETING #1: **Project Background & Brainstorming**

Monday 12.05.2016, 7-8:30 PM
East Goshen Township Building
1580 Paoli Pike West Chester, PA

Simone Collins Landscape Architecture
Princeton Hydro

Agenda Items:

1. Consultant / Attendees Sign-in and Introductions
2. Brief background on Hershey's Mill Dam Removal Project
3. Consultant / Committee Responsibilities
4. Site Opportunities & Constraints
5. Your Ideas, Suggestions and Recommendations

Simone Collins Landscape Architecture

Peter M. Simone, FASLA, RLA

Project Principle

Sarah Leeper, RLA

Project Manager

Melisa Barley, Landscape Architect

Project LA

Princeton Hydro

Geoffrey M. Goll P.E.

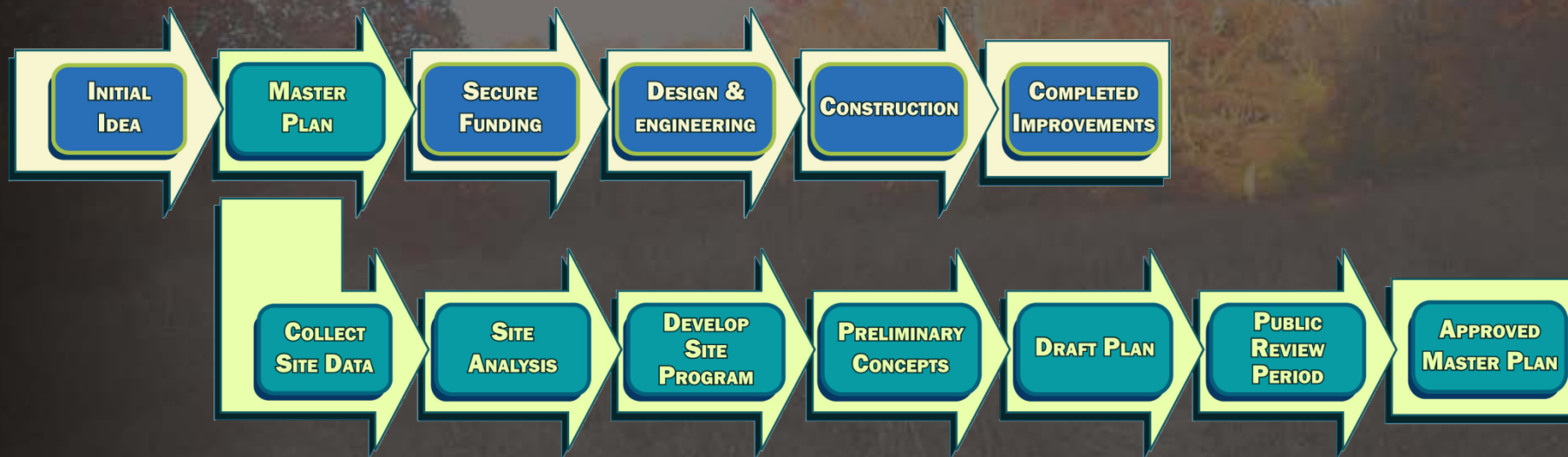
Civil Engineer – expertise in dam removal for dam safety compliance, fish migration, floodplain reconnection, and habitat restoration.

PROJECT SCHEDULE



Meeting	Date & Time	Meeting Subject
Hershey's Mill Committee Meeting #1	Nov 17, 6:30 pm	Project Introduction / Brainstorming
<u>Hershey's Mill Public Meeting #1</u>	<u>Dec 5, 7:00 pm</u>	<u>Project Introduction / Brainstorming</u>
Hershey's Mill Committee Meeting #2	Jan 17, 6:30 pm	Site Concepts
Hershey's Mill Public Meeting #2	Jan 26, 7:00 pm	Site Concepts
Hershey's Mill Committee Meeting #3	Feb 23, 6:30 pm	Draft Plan
Hershey's Mill Public Meeting #3	Mar 23, 7:00 pm	Draft Plan Presentation - 60 day review
Hershey's Mill Committee Meeting #4	May 24, 6:30 pm	Review draft plan Comments
Hershey's Mill Public Meeting #4	Jun 22, 7:00 pm	Final Plan Presentation

MASTER PLAN PROCESS



Transparent Public Process:

- 4 public meetings
- 4 committee meetings
- 3 Web surveys

“All voices are heard and honored”

Expand, revise and & add new goals throughout the public participation.

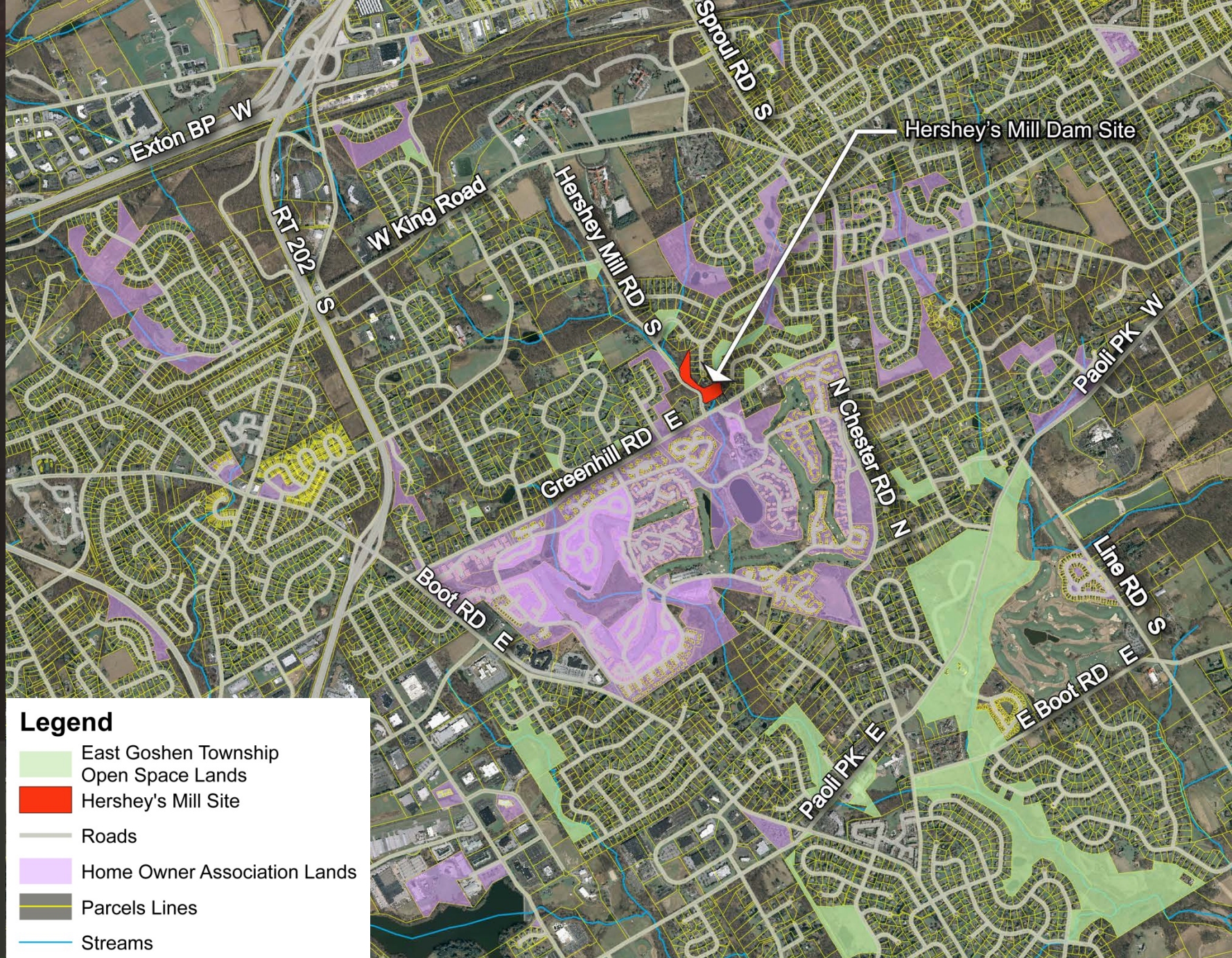
- Engage in an open and transparent exchange of ideas where all ideas are considered and where everyone's voice can be heard throughout the design process.
- Foster ecological sustainability through plant and animal diversity and by employing best practices in landscape and park design.
- Protect and preserve the privacy of adjacent and nearby residences through proper setbacks, screening and other techniques.
- Create landscapes that are low maintenance and that will create new cultural landscape values in each surrounding neighborhood.

Site History

- Dam has been in existence for over 200 years.
- Dam wall / spillway reconstructed in early 1970's
- Hershey's Mill Dam has been studied since 2007 when it was determined not to meet safety standard requirements.
- Various options for dam considered included:
 - Improving the spillway;
 - A partial breach of the dam; and
 - A full breach of the dam.
- On June 28 2016, the Board of Supervisors voted to decommission the dam via a full breach.



REGIONAL CONTEXT



Legend

- East Goshen Township
- Open Space Lands
- Hershey's Mill Site
- Roads
- Home Owner Association Lands
- Parcels Lines
- Streams

Views from Greenhill Road



Views from Spillway



Reservoir Area



Views from Hershey Mill Road



Adjacent Home Owners Association (HOA) Lands



SITE MAP



Legend

- Hershey's Mill Site
- East Goshen Township Open Space Lands
- Home Owner Association Lands
- Parcels Lines
- Roads
- Streams
- 100 Year Floodplain
- Wetlands
- ✱ East Goshen Historic Resources Inventory Sites

GOALS

Goals and Priorities for the Project: Initially broad, then specific: “Develop a Park Master Plan” or “Bring People into the Park”

Facts: Existing land use, site conditions, outstanding natural resources, adjacent properties, existing trails, nearby open space sites, partners.

FACTS

CONCEPTS

Ideas for Attaining Project Goals: Can be basic needs “Provide Restrooms” or larger ideas “Link to key Nearby Sites”, or “Provide Memorable Play Experiences” “Create Destinations within the Park”

GOALS

Master
Site Plan

Public Access

Habitat Creation

FACTS

6.4 ACRES

ADJACENT TO 12.8
ACRES OPEN SPACE
AND HOA LANDS

CULTURALLY
SIGNIFICANT

CONCEPTS

WALKING TRAILS

SMALL PARKING
AREA

***“50 FOOT
TALL WATER
SLIDE”***

PARTNERS

DCNR

DEP

HERSHEY’S MILL
ESTATE
HOMEOWNERS

SITE MAP



Legend

- Hershey's Mill Site
- East Goshen Township Open Space Lands
- Home Owner Association Lands
- Parcels Lines
- Roads
- Streams
- 100 Year Floodplain
- Wetlands
- ✱ East Goshen Historic Resources Inventory Sites

PROJECT SCHEDULE



Meeting	Date & Time	Meeting Subject
Hershey's Mill Committee Meeting #1	Nov 17, 6:30 pm	Project Introduction / Brainstorming
Hershey's Mill Public Meeting #1	Dec 5, 7:00 pm	Project Introduction / Brainstorming
Hershey's Mill Committee Meeting #2	Jan 17, 6:30 pm	Site Concepts
<u>Hershey's Mill Public Meeting #2</u>	<u>Jan 26, 7:00 pm</u>	<u>Site Concepts</u>
Hershey's Mill Committee Meeting #3	Feb 23, 6:30 pm	Draft Plan
Hershey's Mill Public Meeting #3	Mar 23, 7:00 pm	Draft Plan Presentation - 60 day review
Hershey's Mill Committee Meeting #4	May 24, 6:30 pm	Review draft plan Comments
Hershey's Mill Public Meeting #4	Jun 22, 7:00 pm	Final Plan Presentation

Next Meetings:

Public Meeting #2:
Initial Concepts / Feedback

Wednesday 7-8:00 PM
Jan 26, 2017

Location:
Township Building

Township Project Website:

<https://eastgoshen.org/about-us/hershey-mill-dam>

Web Survey:

Tell People about the Online Opinion Survey:

<https://www.surveymonkey.com/r/HMDVisioningSurvey>

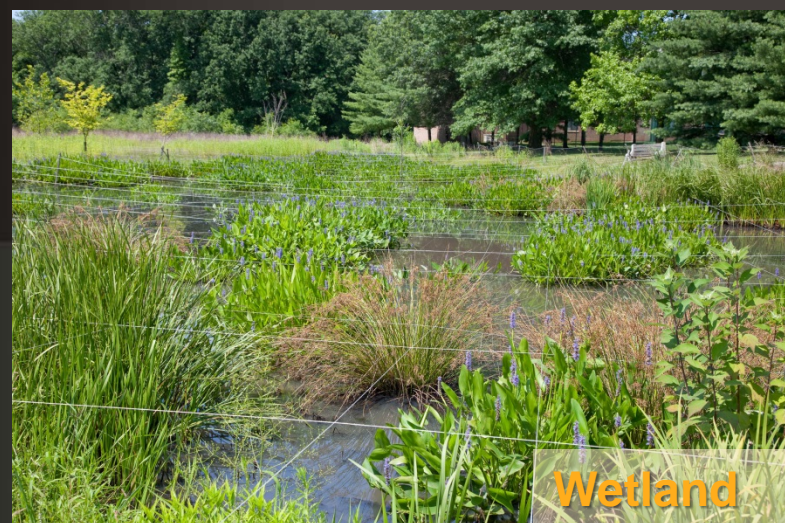
Contact Info: Please Copy All Parties

Sarah Leeper, Project Manger
Simone Collins Landscape Architecture
(610) 239-7601
E-Mail: sleeper@simonecollins.com

Peter Simone, Project Principle
Simone Collins Landscape Architecture
(610) 239-7601
E-Mail: psimone@simonecollins.com

Rick Smith, Manager
East Goshen Township
(610) 692-7171
E-Mail: rsmith@eastgoshen.org

Variety of Habitat Potential: Wet/Dry Meadows, Wetlands, Ponds, Vernal Pools



Boardwalks and Wildlife Viewing Blinds



Wildlife Blind



Wildlife Blind



Boardwalk



Boardwalk



Boardwalk



Wildlife Blind



Viewing platform

Stream Restoration

Log Vane



Fishing Access



Water Access



Weir



Step Pools



Habitat Boxes: Birds, Bat, Pollinators



Trails / Signage / Amenities



Nature Base Play

