

Appendix B—Neighborhood Connections Summaries

This Appendix is a supplement to the information presented in Chapter 3—Connect People. The Appendix includes a summary or profile for each of the proposed Neighborhood Connections presented in the report. The Neighborhood Connections Map and Table (Figures 3.5 and 3.6) are included in this Appendix as a reference. Each proposed connection is identified with an ID number that corresponds to the map, table, and summary page.

The summary page for each connection includes:

- Overview of existing conditions, which were evaluated to determine the proposed alignment and facility type
- Images depicting existing conditions
- Overview of the proposed connection, including facility type, alignment, width, surface material, and key destinations
- Map showing the proposed connection and other existing conditions, such as historic properties, Township owned properties, water features, and key destinations
(Legend for all summary page maps is provided below.)

LEGEND

Facility Type

- Path - Natural
- Path - Improved
- Sidewalk
- Trail
- Shoulder/Striping
- Shared Lane
- Bike Lane

Status

- Solid Line - Existing
- Dashed Line - Design

Existing

- Flasher
- Marked Crossing
- Signal
- Bridges

Proposed

- Flasher
- Marked Crossing
- RRFB

Parcels





- Class 1 Historic Properties
- Class 2 Historic Properties
- Township Properties




Water Features

- Rivers & Streams
- Flood Zones

The summary also includes references to conceptual plans prepared for priority connections and other notes related to design features or other considerations.

Bicycle and Pedestrian Facilities Toolbox (Excerpt from Figure 3.1)

| Off-Road | | | |
|--|--|--|---|
| Path—Natural | Path—Improved | Sidewalk | Trail |
| Pathway that is intended for use by pedestrians to connect various destinations. | Pathway that is intended for use by pedestrians to connect various destinations. | Concrete pathway parallel to the road that is intended for use by pedestrians with numerous access points to adjacent land uses. | Paved pathway at least 8' wide that is used by both bicyclists and pedestrians. |
|  |  |  |  |

| On-Road | | |
|--|--|---|
| Shoulder/Striping | Shared Lane | Bike Lane |
| Paved shoulder with signage, striping, or coloring to designate use by bicyclists or pedestrians, particularly when other dedicated facilities are not feasible. | Roadway with travel lanes that are shared by both vehicles and bicycles. Signage and striping, such as sharrows, can be used to designate the shared lane. | Portion of the roadway at least 5' wide and designated for exclusive use by bicyclists with pavement markings and possibly signage. |
|  |  |  |

Neighborhood Connections Table: Proposed Pedestrian and Bicycle Facilities (Figure 3.6)

| Map ID | Corridor | Begin | End | Side of Roadway | Facility Type |
|---------------------|--|-------------------------------|-------------------------------------|------------------|---|
| 1 | Paoli Pike - <i>Part of Goshenville Streetscape</i> | Boot Road | Vista Drive | North | Path (6' wide asphalt) |
| 2 | Airport Road - <i>North of Paoli Pike</i> | Paoli Pike | Ward Ave | East, On-Road | Path (6' wide asphalt) |
| 3 | Airport Road / School Entrance - <i>South of Paoli Pike</i> | Paoli Pike | School Entrance / Existing Sidewalk | West | Sidewalk (5' wide concrete) |
| 4 | Ellis Lane - <i>South of Paoli Pike</i> | Paoli Pike | School Entrance / Existing Sidewalk | West | Sidewalk or Path (5' wide minimum) |
| 5 | Reservoir Road - <i>North of Paoli Pike</i> | Paoli Pike | Enterprise Drive | East | Path (6' wide asphalt) |
| 6 | Reservoir Road - <i>South of Paoli Pike</i> | Paoli Pike | Baldwin Drive / Cooper Circle | On-Road | Shared Lane |
| 7 | Reservoir Road - <i>South of Paoli Pike</i> | Baldwin Drive / Cooper Circle | East Strasburg Road | East & West | Path (6' wide asphalt) |
| 8 | Reservoir Road - <i>Segments to be included in Milltown Dam Park</i> | East Strasburg Road | West Chester Pike (Route 3) | East | Trail (8' - 10' wide asphalt) |
| 9 | Boot Road - <i>North of Paoli Pike</i> | Enterprise Dr / Generals Way | Village Square Drive | West | Path (6' wide asphalt) |
| 10 | Boot Road - <i>South of Paoli Pike</i> | Paoli Pike | Barker Dr / New Kent Drive | East | Path (6' wide asphalt) |
| 11 | N. Chester Road (Route 352) - <i>North of Paoli Pike</i> | Paoli Pike | Colonial Lane | West | Path (6' wide asphalt) |
| 12 | N. Chester Road (Route 352) - <i>North of Paoli Pike</i> | Highland Avenue | Chandler Drive | East & West | Path (6' wide asphalt) |
| 13 | Highland Avenue | 1612 & 1612B Highland Ave | N. Chester Road (Route 352) | North | Path (6' wide asphalt) |
| 14 | Bow Tree Connection | Existing Boardwalk | Eldridge Drive | Not Applicable | Path (6' wide asphalt) & Boardwalk Bridge |
| 15 | Bow Tree / Clocktower Greenway | Boot Road | Ashbridge Preserve | Not Applicable | Path (Natural) |
| 16 | Line Road | Paoli Pike | Warrior Rd | West | Path (6' wide asphalt) |
| <i>Under Design</i> | Paoli Pike - <i>Part of Paoli Pike Trail</i> | Airport Road | Boot Road | North | Trail (8' - 10' wide asphalt) |
| <i>Under Design</i> | Paoli Pike - <i>Part of Paoli Pike Trail</i> | Boot Road | Existing Trails in Applebrook Park | South | Trail (8' - 10' wide asphalt) |

EXISTING CONDITIONS

- No existing bicycle or pedestrian facilities
- Paoli Pike Trail in design along the south side of Paoli Pike
- Crossing Ridley Creek
- Varying width shoulders on the north side of Paoli Pike
- Some vegetation adjacent to the roadway



Facility Type

Pedestrian—Path

Limits

Boot Road to Vista Drive

Alignment

North side of Paoli Pike

Width

6'

Surface Material

Asphalt

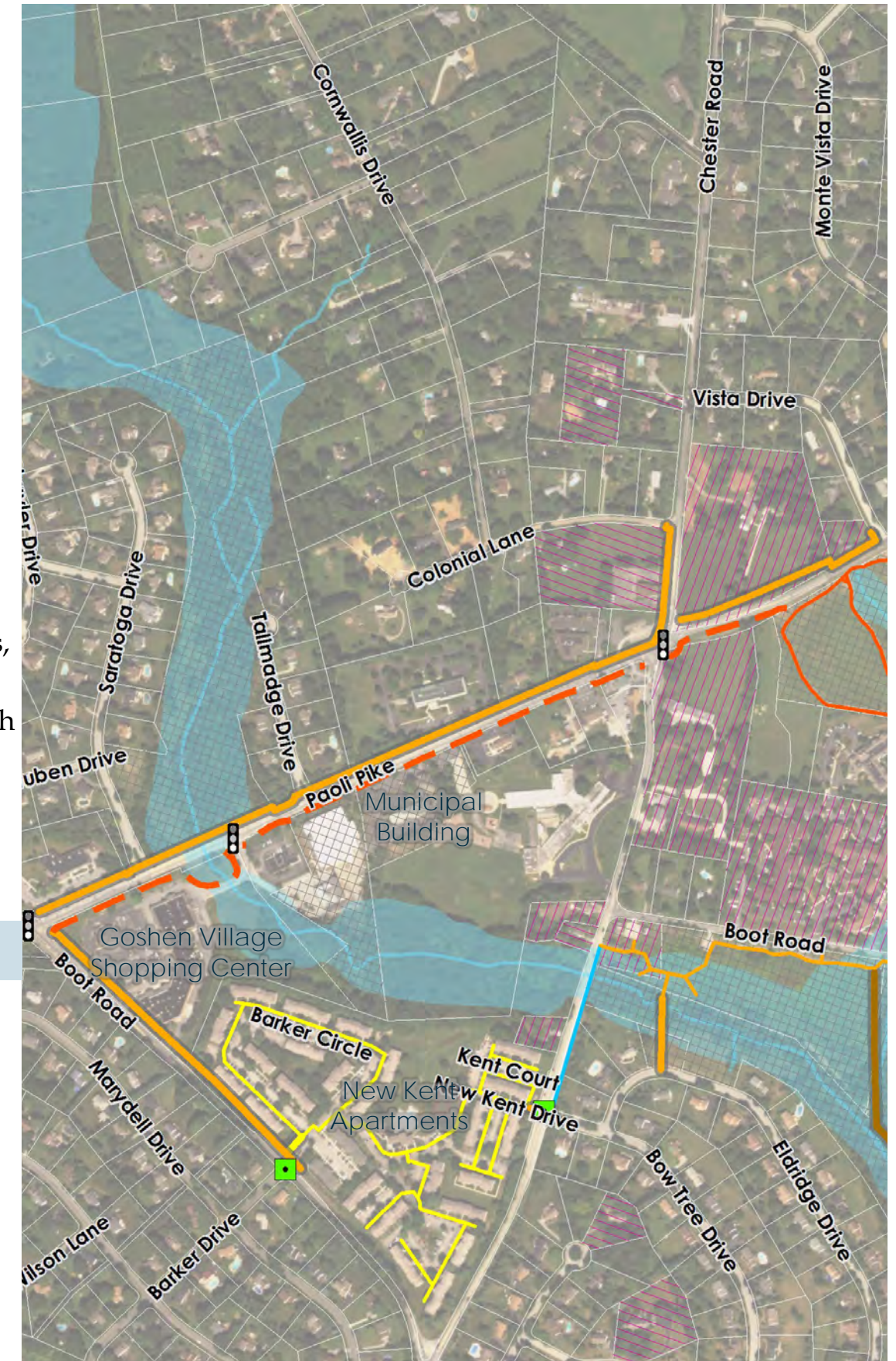
Key Destinations

Paoli Pike Trail, Goshenville (including retail establishments, offices, schools, and the municipal complex), Wentworth Neighborhood

OTHER DESIGN FEATURES

See Figure 5.3—Goshenville Streetscape Enhancements Conceptual Plan

NEW CONNECTION



Note: See Page B-1 for map legend.

EXISTING CONDITIONS

- No existing bicycle or pedestrian facilities
- Limited available right-of-way
- Narrow shoulders
- Fernhill Lake / West Chester Reservoir
- Crossings of the East Branch Chester Creek and floodplain
- Utility poles
- Steep slopes and vegetation adjacent to the roadway
- Topography
- Airport Road is the Township border and is jointly owned by East Goshen and West Goshen Townships



NEW CONNECTION

Facility Type

Pedestrian—Path

Limits

Paoli Pike to Ward Avenue

Alignment

East side of Paoli Pike

Width

6'

Surface Material

Asphalt

Key Destinations

Paoli Pike Trail, East High School, Fugett Middle School, YMCA, Goshen Corporate Park West,

Potential Future Connections

West Chester Borough, East Branch Brandywine Trail and other Regional Trails / The Circuit

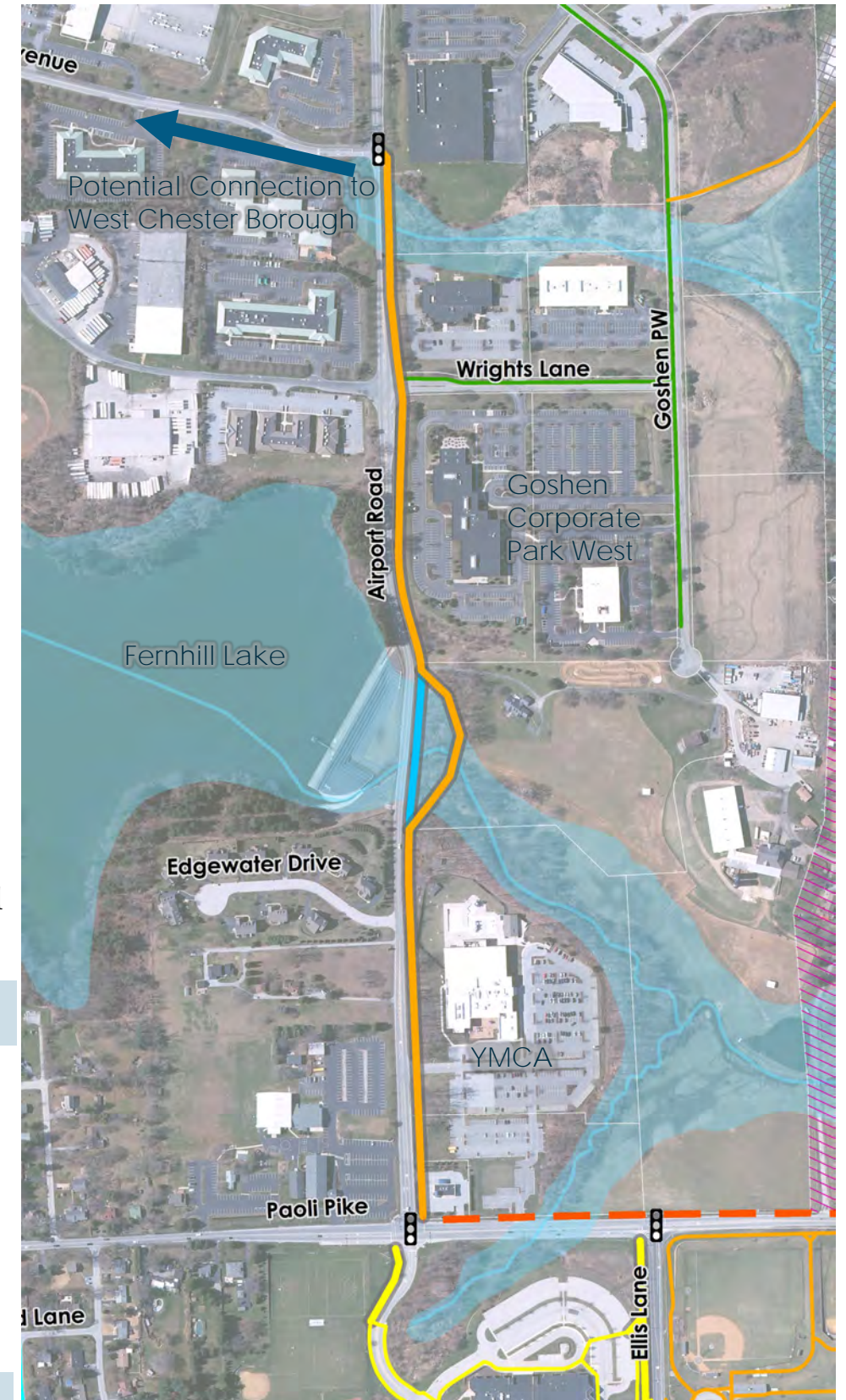
OTHER DESIGN FEATURES

Crossing East Branch of Chester Creek

- Near-term: Narrow and shift travel lanes to provide striped shoulder for pedestrians.
- Long-term: New pedestrian bridge.

OTHER CONSIDERATIONS

- Requires coordination with West Goshen Township



Note: See Page B-1 for map legend.

EXISTING CONDITIONS

School Access

- Existing sidewalks along driveway terminate approximately 250' south of the Paoli Pike and Airport Road/School Access intersection
- Pedestrian crossings provided at the intersection of Paoli Pike and Airport Road/School Access
- Light posts (east side)
- Steep slopes adjacent to the driveway (east side)
- East High School and Fugett Middle School Campus is located in West Goshen Township



Ellis Lane

- Existing sidewalks within the parking lot and along the driveway
- Existing pedestrian path for Price Field along the roadway (east side)
- Pedestrian crossings prohibited at the intersection of Paoli Pike and Ellis Lane
- Fence (west side)
- Utility poles (west side)
- Ellis Lane is the Township border and is jointly owned by East Goshen and West Goshen Townships



NEW CONNECTION

Facility Type

Pedestrian—Sidewalk or Path

Limits

Paoli Pike to East High School & Fugett Middle School

Alignment

West side of School Access Drive (opposite Airport Road) and west side of Ellis Lane

Width

5' - 6'

Surface Material

Concrete or Asphalt

Key Destinations

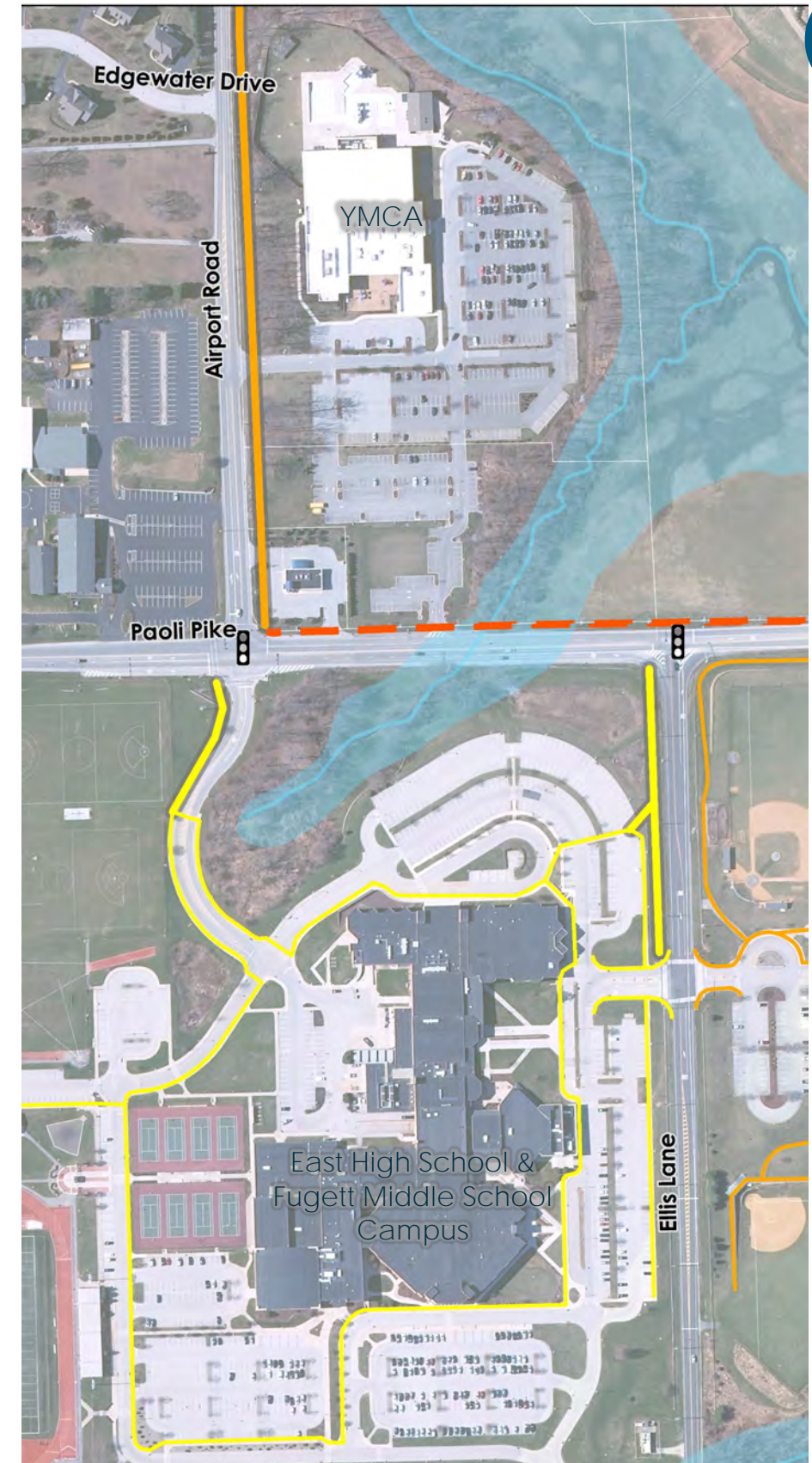
Paoli Pike Trail, YMCA, East High School, Fugett Middle School, Price Fields

OTHER DESIGN FEATURES

- See Figure 4.3—Traffic Calming Conceptual Plan between Airport Road and Ellis Lane

OTHER CONSIDERATIONS

- Requires coordination with West Goshen Township and West Chester Area School District



Note: See Page B-1 for map legend.

EXISTING CONDITIONS

- No existing dedicated bicycle or pedestrian facilities along Reservoir Road
- Relatively flat grass area adjacent to the road
- Small hill or change in grade along Reservoir Road between Paoli Pike and Enterprise Drive
- Existing utilities at the southeast corner of Enterprise Drive and Reservoir Road
- Traffic signal at the intersection of Reservoir Road and Paoli Pike



NEW CONNECTION

Facility Type

Pedestrian—Path

Limits

Paoli Pike to Enterprise Drive

Alignment

East side of Reservoir Road

Width

6'

Surface Material

Asphalt

Key Destinations

Paoli Pike Trail, Goshenville, Goshen Corporate Park, Existing bicycle lane on Enterprise Drive

Potential Future Connections

Hershey's Mill

OTHER DESIGN FEATURES

- See Figure 3.8—Reservoir Road Path Conceptual Plan



Note: See Page B-1 for map legend.

EXISTING CONDITIONS

- No existing dedicated bicycle or pedestrian facilities along Reservoir Road
- Existing road cartway width is 22' to 24' wide
- Limited available right-of-way
- Crossings of streams with potential wetland and floodplain areas
- Numerous driveways with mailboxes and landscaping adjacent to the roadway
- Utility poles along the west side of the roadway
- Steep slopes and vegetation adjacent to the roadway
- Topography
- Estimated traffic volume of 2,050 vehicles per day
- 35 mph speed limit with 80% of vehicles traveling 40 mph or less



NEW CONNECTION

Facility Type

Bicycle—Shared Lane

Limits

Paoli Pike to Baldwin Drive/Cooper Circle

Alignment

On-road

Width

11' Shared Travel Lane

Surface Material

Asphalt

Key Destinations

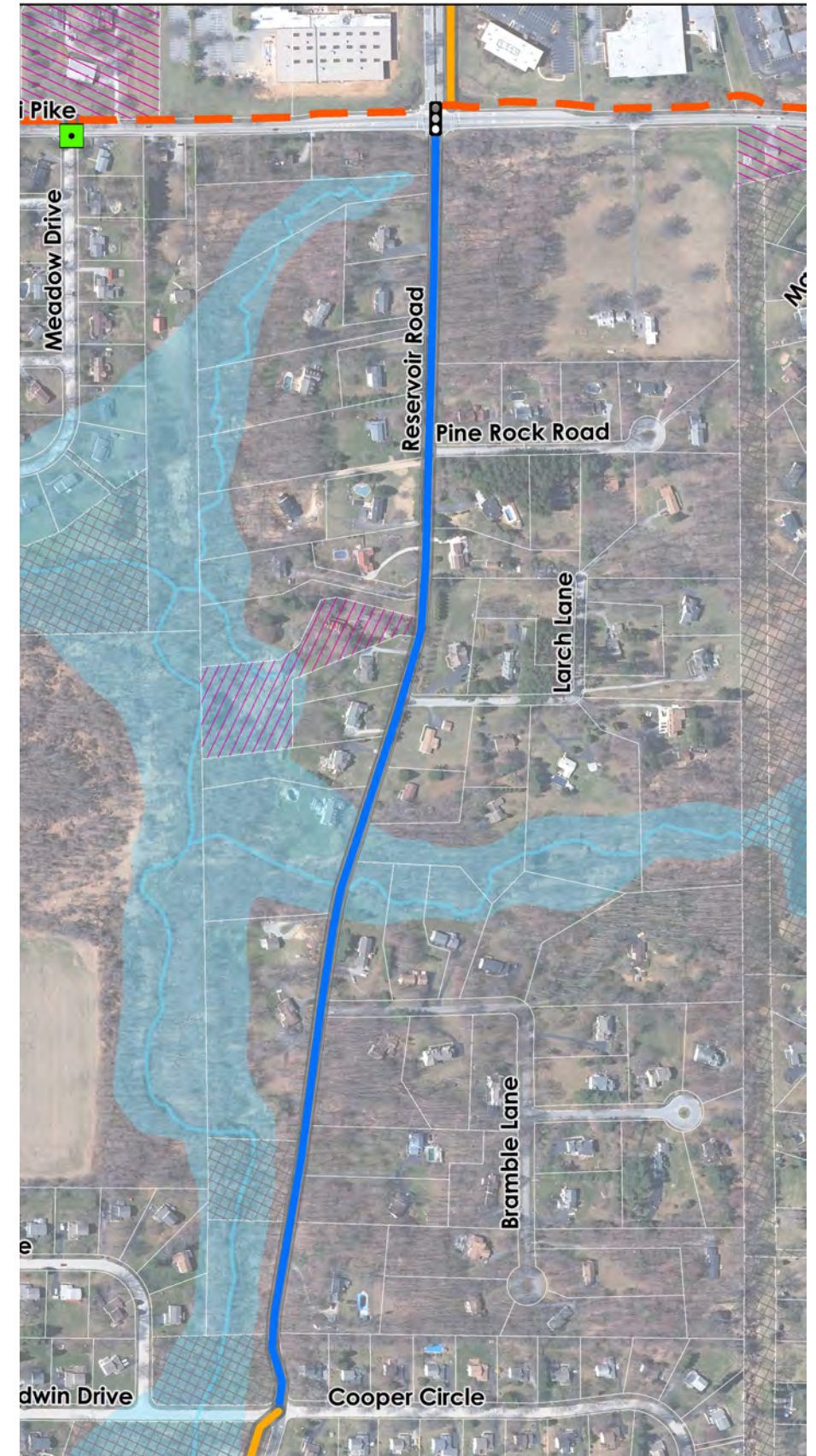
Paoli Pike Trail, Supplee Open Space, Milltown Dam Park, Baldwin Drive & Cooper Circle Neighborhoods

Potential Future Connections

West Chester Pike corridor and SEPTA Bus #104

OTHER DESIGN FEATURES

- See Figure 3.9—Reservoir Road Shared Lane Conceptual Plan



Note: See Page B-1 for map legend.

EXISTING CONDITIONS

- Crossing East Branch of Chester Creek
- Floodplain
- Existing Township Open Space
- Milltown Dam Park Project in design
- Crossing Strasburg Road at signalized intersection



NEW CONNECTION

Facility Type

Pedestrian—Path
Multi-use Trail

Limits

Baldwin Drive/Cooper Circle to West Chester Pike

Alignment

West side of Reservoir Road between Baldwin Drive/Cooper Circle to crossing of East Branch of Chester Creek

East side of Reservoir Road between crossing of East Branch of Chester Creek and West Chester Pike (Route 3)

Width

6' +

Surface Material

Asphalt

Key Destinations

Milltown Dam, West Chester Pike (Route 3) and SEPTA Bus #104

OTHER DESIGN FEATURES

- See Milltown Dam Park Open Space Master Plan



Note: See Page B-1 for map legend.

EXISTING CONDITIONS

- Limited existing bicycle or pedestrian facilities
- Limited available right-of-way
- Utility poles along west side of roadway
- Steep slopes and vegetation adjacent to the roadway
- Topography
- Driveways and mailboxes for 16 residential homes along the corridor
- Pipeline
- Five road crossings



NEW CONNECTION

Facility Type

Pedestrian Path

Limits

Enterprise Drive/Generals Way to Hershey's Mill West

Alignment

West side of Boot Road

Width

6'

Surface Material

Asphalt

Key Destinations

Hershey's Mill, Goshen Corporate Park, Wentworth Neighborhood



Note: See Page B-1 for map legend.

EXISTING CONDITIONS

- No existing bicycle or pedestrian facilities along Boot Road
- Limited available right-of-way
- Narrow shoulders
- Pipeline along north side of roadway
- Limited sight distance
- Steep slopes and vegetation adjacent to the roadway (south side)



NEW CONNECTION

Facility Type

Pedestrian—Path

Limits

Paoli Pike to New Kent Drive/Barker Drive

Alignment

North side of Boot Road

Width

6'

Surface Material

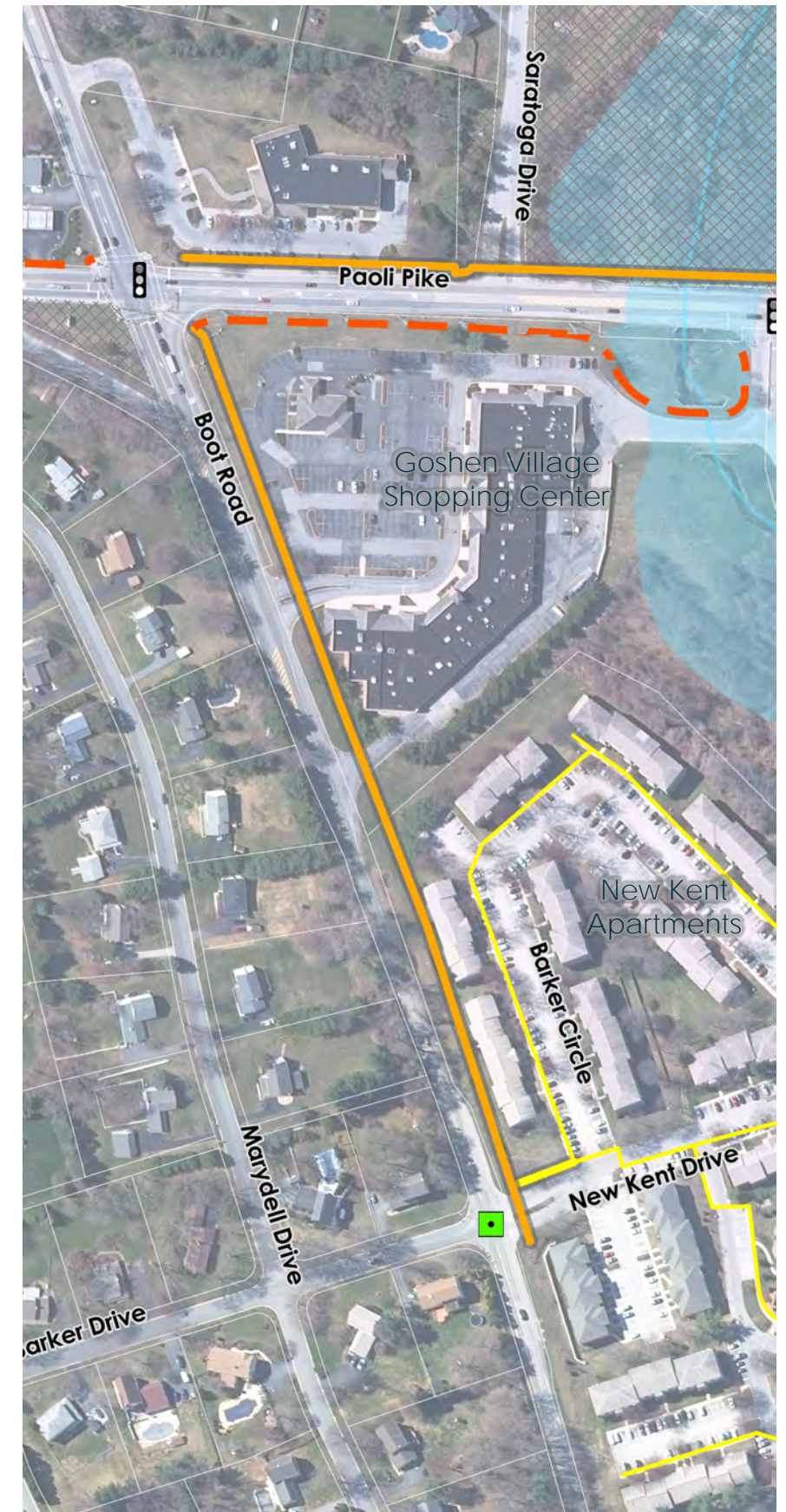
Asphalt

Key Destinations

Paoli Pike Trail, Goshenville, New Kent Apartments, Marydell Neighborhood, Goshen Village Shopping Center

OTHER DESIGN FEATURES

- See Figure 3.7—Boot Road Path Conceptual Plan
- Rectangular Rapid Flash Beacon (RRFB) for crossing at New Kent Drive/Barker Drive



Note: See Page B-1 for map legend.

EXISTING CONDITIONS

- No existing bicycle or pedestrian facilities
- Limited available right-of-way
- Narrow shoulders
- Utility poles (west side)



NEW CONNECTION

Facility Type

Pedestrian—Path

Limits

Paoli Pike to Colonial Lane

Alignment

West side of N Chester Road (Route 352)

Width

6'

Surface Material

Asphalt

Key Destinations

Paoli Pike Trail, Cornwallis Drive Neighborhood

Potential Future Connections

Hershey's Mill



Note: See Page B-1 for map legend.

EXISTING CONDITIONS

- Existing connection from Highland Avenue to East Goshen Township Park
- Limited existing bicycle and pedestrian facilities
- Limited available right-of-way
- Narrow shoulders
- Utility poles (east side)
- Vegetation adjacent to the roadway
- Limited sight distance



NEW CONNECTION

Facility Type

Pedestrian—Path

Limits

Highland Avenue to Hershey's Mill

Alignment

North side of Highland Avenue

East side from Highland to Alcott

West side from Alcott to Hershey's Mill

Width

6'

Surface Material

Asphalt

Key Destinations

Hershey's Mill, East Goshen Township Park

OTHER DESIGN FEATURES

- Rectangular Rapid Flash Beacon (RRFB) for pedestrian crossing at Alcott Circle
- Reduce speed limit on N Chester Road (Rt. 352) from 40 mph to 35 mph



Note: See Page B-1 for map legend.

EXISTING CONDITIONS

- Existing striped shoulder on N. Chester Road (Rt. 352) between Bow Tree Drive and Goshenville Blacksmith Shop
- Crossings of the Ridley Creek Tributary and floodplain
- Existing boardwalks north of the Ridley Creek Tributary
- Heavy vegetation



NEW CONNECTION

Facility Type

Pedestrian—Path and Bridge

Limits

Existing Boardwalk to Eldridge Drive

Width

5' (Match Existing)

Surface Material

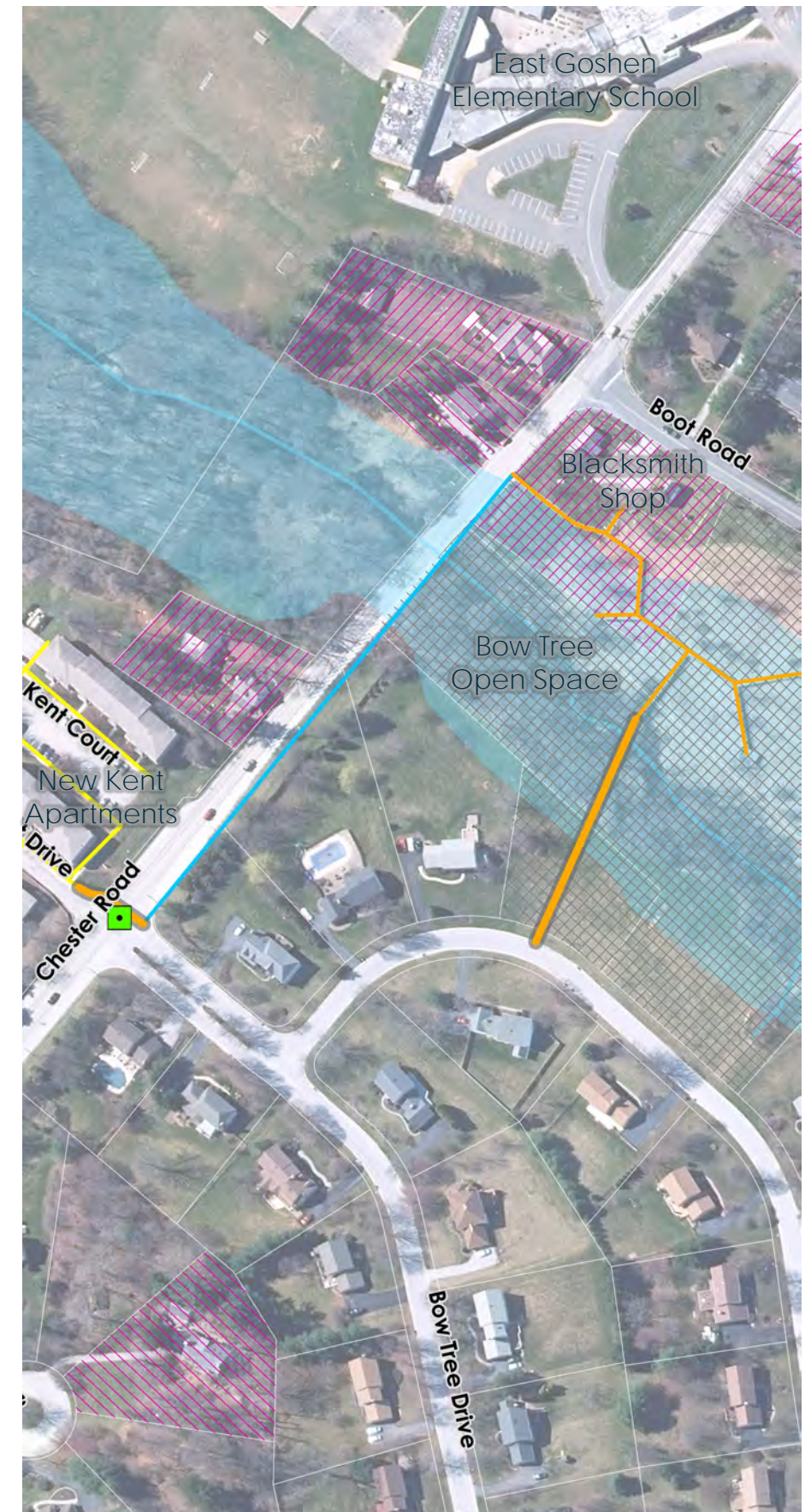
Boardwalk, Asphalt

Key Destinations

Goshenville, Blacksmith Shop, Plank House, Bow Tree Neighborhood, Bow Tree Open Space, New Kent Apartments

OTHER DESIGN FEATURES

- See Greenways section on page 3-12 and Appendix C for more information
- Consider and evaluate either a new bridge/boardwalk over Ridley Creek or enhancements to the connection along Route 352
- Rectangular Rapid Flash Beacon (RRFB) for crossing of N Chester Road at New Kent Drive/Bow Tree Drive
- Reduce speed limit on N Chester Road (Rt. 352) from 45 mph to 35 mph



Note: See Page B-1 for map legend.

EXISTING CONDITIONS

- Existing Township open space
- Existing mowed path for sewer easement in some locations
- Vegetated areas
- Ridley Creek

Image of Stepping Stones Stream Crossing



NEW CONNECTION

Facility Type

Pedestrian Path—Natural

Limits

Boot Road to Ashbridge Preserve

Alignment

Follow existing Township sewer easement and primarily within existing Township open space

Width

Varying with 5' - 6' desired

Surface Material

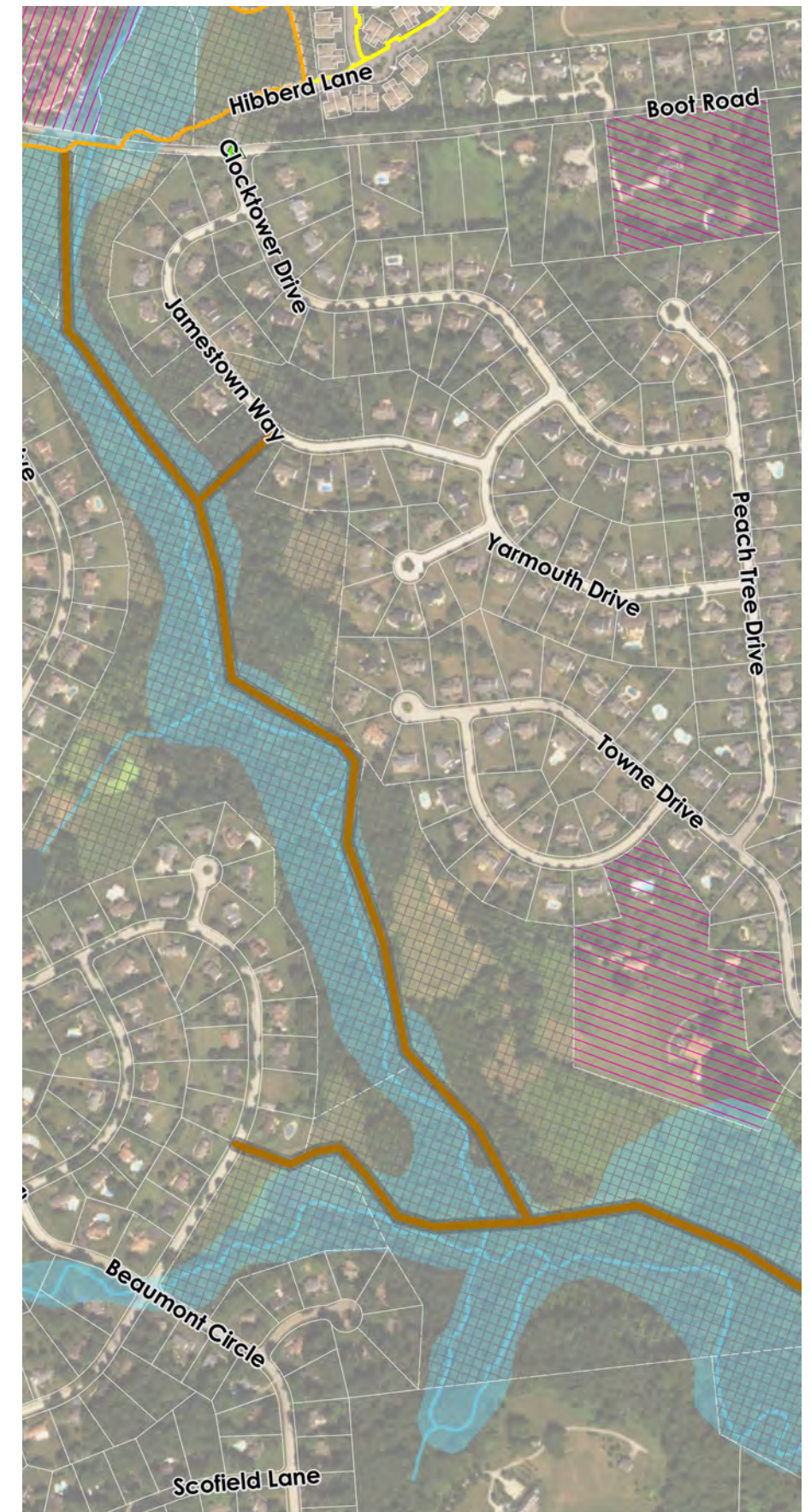
Grass

Key Destinations

Applebrook Park, Township Park, Ashbridge Preserve, Blacksmith Shop, Plank House, Bow Tree & Clocktower Neighborhoods, Paoli Pike Trail

OTHER DESIGN FEATURES

- See Greenways section on page 3-12 and Appendix C for more information
- May require crossings of Ridley Creek. Stepping stones or other context sensitive and low impact design solutions should be considered for the crossings



Note: See Page B-1 for map legend.

EXISTING CONDITIONS

- Limited existing bicycle or pedestrian facilities
- Limited available right-of-way
- Utility poles (west side)
- Vegetation adjacent to the roadway
- Pipeline



NEW CONNECTION

Facility Type

Pedestrian - Path

Limits

Paoli Pike to Warrior Road

Alignment

West side of Line Road

Width

6'

Surface Material

Asphalt

Key Destinations

Madison & Warrior Neighborhoods,
Applebrook Park, Willistown
Township

Potential Future Connections

Malvern Borough, Patriots' Path,
Chester Valley Trail/The Circuit

OTHER DESIGN FEATURES

- Marked crosswalks at Madison Drive, Saddlebrook Drive, Warrior Road



Note: See Page B-1 for map legend.