

AGENDA
EAST GOSHEN TOWNSHIP
BOARD OF SUPERVISORS

Tuesday, April 17, 2018
7:00 PM

6:00 PM Executive Session – Personnel Matter and Real Estate Matter

1. Call to Order
2. Pledge of Allegiance
3. Moment of Silence – Supervisor Carmen Battavio
4. Ask if anyone is recording the meeting
5. Chairman's Report
 - a. The Board met in Executive Session prior to tonight's meeting to discuss a personnel matter and real estate matter.
 - b. The Chester County Planning Commission will be having a public meeting at Penn State Great Valley on Tuesday May 1st @ 5:30 PM to receive input on Landscapes 3.
 - c. [Keep East Goshen Beautiful Day is this Saturday April 21st.](#)
6. Public Hearing - none
7. Emergency Services Reports
 - a. WEGO – Chief Brenda Bernot
 - b. Goshen Fire Co – none
 - c. Malvern Fire Co – none
 - d. [Good Fellowship – March 2018](#)
 - e. Fire Marshal - none
8. [Financial Report – March 2018](#)
9. Old Business
 - a. [Presentation on Citizens' Risk Assessment](#)
10. New Business
 - a. [Consider Interstate Energy Company Pipeline Easement](#)
 - b. [Update on West Chester Pike Coalition](#)
 - c. [Public Comment on MS4 Plan](#)
 - d. [Consider Township Park Pedestrian Crossing](#)
 - e. [Consider Paoli Pike Trail Maintenance Policy](#)
 - f. [Consider snow plow replacement](#)
11. Any Other Matter
12. Approval of Minutes
 - a. [April 10, 2018](#)
13. [Treasurer's Report – April 12, 2018](#)
14. Liaison Reports - none
15. Correspondence, Reports of Interest
 - a. [April 10, 2018 – Notice of Pension Audits](#)
16. Public Comment
17. Adjournment

Meetings & Dates of Importance

Apr 21, 2018	Keep East Goshen Beautiful Day	08:00am
Apr 25, 2018	Zoning Hearing Board	07:00pm
May 01, 2018	Board of Supervisors	07:00pm
May 02, 2018	Planning Commission	07:00pm
May 03, 2018	Park and Rec Commission	07:00pm
May 08, 2018	Pension Committee	10:00am
May 09, 2018	Conservancy Board	07:00pm
May 10, 2018	Farmers Market Opens	03:00pm
May 10, 2018	Historical Commission	07:00pm
May 14, 2018	Municipal Authority	07:00pm
May 14, 2018	Zoning Hearing Board (Malvern Inst)	07:00pm
May 15, 2018	Election Day (no BOS mtg)	-----
May 21, 2018	Futurist Committee	07:00pm
May 22, 2018	Board of Supervisors	07:00pm
May 23, 2018	Planning Commission Workshop	07:00pm
May 28, 2018	Memorial Day, office closed	-----

Newsletter Deadlines for Summer of 2018: May 1st

The Chairperson, in his or her sole discretion, shall have the authority to rearrange the agenda accommodate the needs of other board members, the public or an applicant.

Public Comment – Pursuant to Section 710.1 of the Sunshine Act the Township is required to include an opportunity for public comment agenda which is intended to allow residents and/or taxpayers to comment on matters of concern, official action or deliberation which are or may be before the Board of Supervisors. Matters of concern which merit additional research will be placed on the agenda for the next meeting.

Constant Contact - Want more information about the latest news in the Township and surrounding area? East Goshen Township and Chester County offer two valuable resources to stay informed about important local issues. East Goshen communicates information by email about all Township news through Constant Contact. To sign up, go to www.eastgoshen.org, and click the “E-notification & Emergency Alert” button on the left side of the homepage. Chester County offers an emergency notification system called ReadyChesco, which notifies residents about public safety emergencies in the area via text, email and cell phone call. Signing up is a great way to keep you and your loved ones safe when disaster strikes. Visit www.readychesco.org to sign up today!

Smart 911 - Smart911 is a new service in Chester County that allows you to create a Safety Profile at www.smart911.com that includes details you want the 9-1-1 center and public safety response teams to know about your household in an emergency. When you dial 9-1-1, from a phone associated with your Safety Profile that information automatically displays to the 9-1-1 call taker allowing them to send responders based on up-to-date location and emergency information. With your Safety Profile, responders can arrive aware of many details they would not otherwise know. Fire crews can arrive knowing exactly how many people live in your home and where the bedrooms are located. EMS personnel can know family members' allergies or specific medical conditions. And police can access a photo of a missing family member in seconds rather than minutes or hours, helping the search start faster.

F:\Data\Shared Data\Agendas\Board of Supervisors\2018\041718 Meeting.doc

East Goshen Township Conservancy Board

"KEEP EAST GOSHEN BEAUTIFUL DAY"

Saturday, April 21, 2018

The East Goshen Township Conservancy Board has scheduled the townships annual "Keep East Goshen Beautiful Day" for Saturday, April 21, 2018. This is the 33rd year for this event and it is a great way to jump-start spring-cleaning efforts in our neighborhoods and throughout the Township.

WHO: East Goshen Township Conservancy Board

WHAT: Annual "Keep East Goshen Beautiful Day"

WHEN: Saturday, April 21, 2018

WHERE: East Goshen Township, Chester County, Pennsylvania

WHY: To clean up litter from our roadsides and open spaces.

What to do:

- Please come to the East Goshen Township Building located at 1580 Paoli Pike in West Chester, PA on Saturday, April 21, 2018 between 8:00 & 9:00 AM to register, get refreshments, and to pick up supplies (gloves, trash bags and vests.)
- Let us know if April 21st does not work for you and/or your group and we can leave supplies at the township building's front desk.
- Also, please let us know what day you will be performing the cleanup. So, when we do the street assignments on Saturday, we can save that stretch of road for you and/or your group and we can inform public works when to pick up the trash bags.

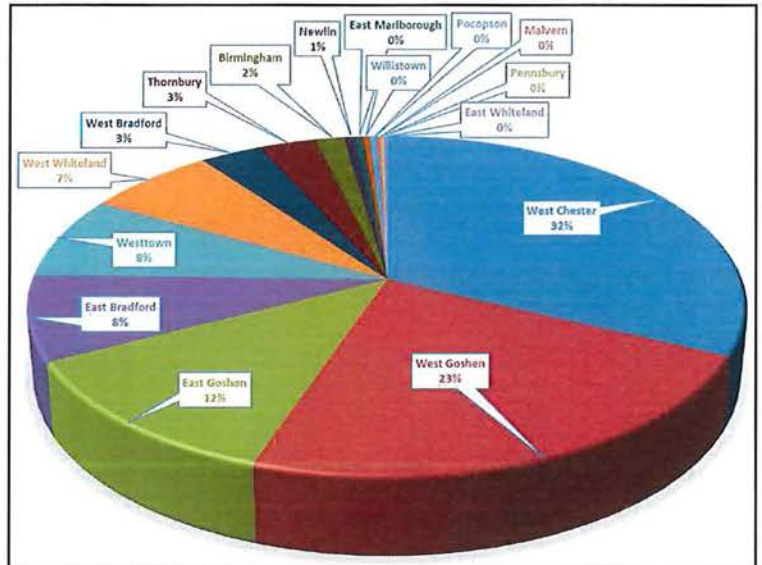
Please call the Township at 610-692-7171 for more information, to let us know you will help, and/or to reserve a particular stretch of road for your group, organization or family.



March 2018 Operations Report

Call Volume

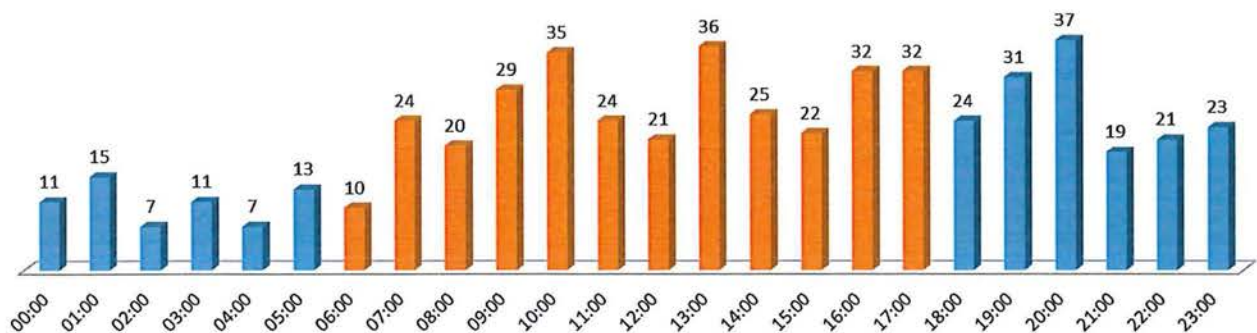
Municipality	Count	% Of Calls
West Chester	170	32.1%
West Goshen	122	23.1%
East Goshen	64	12.1%
East Bradford	43	8.1%
Westtown	41	7.8%
West Whiteland	36	6.8%
West Bradford	17	3.2%
Thornbury	16	3.0%
Birmingham	8	1.5%
Newlin	3	0.6%
East Marlborough	2	0.4%
Willistown	2	0.4%
Pocopson	2	0.4%
Malvern	1	0.2%
Pennsbury	1	0.2%
East Whiteland	1	0.2%
	529	



Non-Transport Breakdown

Refusal	48
Recalled Enroute	26
Recalled On Scene	52
No Services	28
Lift Assist	24
DOA	5
Released to BLS	1
	184

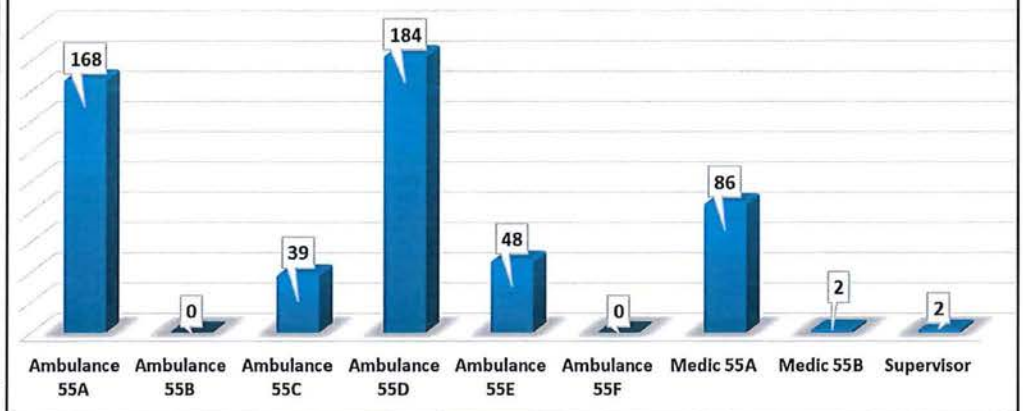
Total Call Volume By Hour



Vehicle Utilization

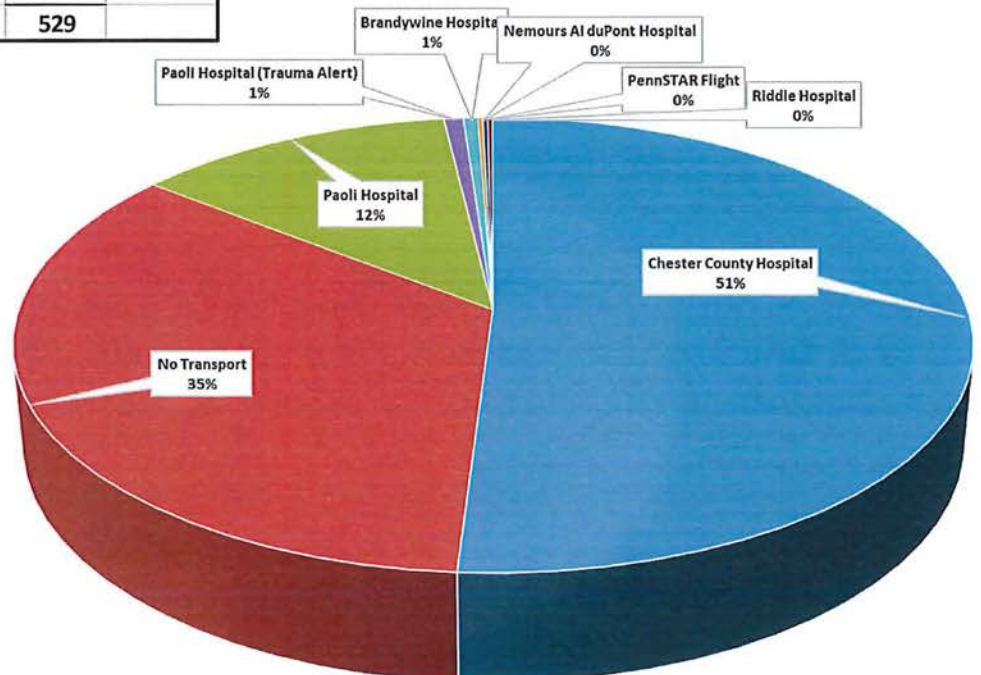
Ambulance 55A	168
Ambulance 55B	0
Ambulance 55C	39
Ambulance 55D	184
Ambulance 55E	48
Ambulance 55F	0
Medic 55A	86
Medic 55B	2
Supervisor	2
Total	529

Call Volume by Vehicle



Hospital Destination Information

Disposition	Total	%
Chester County Hospital	270	51.0%
No Transport	183	34.6%
Paoli Hospital	66	12.5%
Paoli Hospital (Trauma Alert)	4	0.8%
Brandywine Hospital	3	0.6%
Nemours Al duPont Hospital	1	0.2%
PennSTAR Flight	1	0.2%
Riddle Hospital	1	0.2%
Total	529	
Transported:	345	
No Transport:	184	
	529	



Miscellaneous Call Information

Covering Other Agencies	
Organization	Covers
Goshen Fire Co	24
Uwchlan Ambulance	7
Longwood Fire Co	5
Malvern Fire Co	4
Concordville Fire Co	2
Minquas Fire Co	1
	43

Average Times	
Dispatch To Enroute	1.56
Enroute To On Scene	6.63
On Scene Time	13.98
Transport Time	10.12
Dispatch To Available	41.19

Call Types		
Fall / Lift Assist	79	14.9%
Respiratory Difficulty	54	10.2%
Sick Person	51	9.6%
Overdose	31	5.9%
Chest Pain	30	5.7%
Accident - BLS	24	4.5%
Syncope	23	4.3%
Seizures	23	4.3%
Stand By - Fire	22	4.2%
Stroke/CVA	21	4.0%
Injured Person	20	3.8%
Emotional Disorder	18	3.4%
Heart Problems	15	2.8%
Abdominal Pain	12	2.3%
Hemorrhaging	12	2.3%
Unresponsive Person	11	2.1%
Diabetic Emergency	10	1.9%
Unconscious Person	10	1.9%
Hypo Tension	8	1.5%
DOA	8	1.5%
Cardiac /Resp Arrest	6	1.1%
Allergic / Medication Reaction	5	0.9%
Assault	5	0.9%
Accident - ALS	5	0.9%
Alarm - Medical BLS	4	0.8%
Back Pain	4	0.8%
Poisoning	2	0.4%
Accident - Entrapment	2	0.4%
Unknown Nature	2	0.4%
Fractures	2	0.4%
Hyper Tension	2	0.4%
Standby	2	0.4%
Neurological / Head Injury	2	0.4%
Maternity / Labor Pain	1	0.2%
Laceration	1	0.2%
Accident - Pedestrian	1	0.2%
Hosp to Hosp Emerg Trans	1	0.2%
	529	

Memo

To: Board of Supervisors
From: Jon Altshul
Re: March 2018 Financial Report
Date: April 9, 2018

Net of pass-through accounts, as of March 31st, the general fund had revenues of \$3,739,764 and expenses of \$2,594,252 for a year-to-date surplus of \$1,145,512. A surplus of this amount is normal at this point in the year, as March 31st is the deadline discounted real estate tax payment. Compared to the YTD budget, revenues were \$114,621 over budget and expenses were \$4,321 over budget for a positive budget variance of \$110,300. As of March 31st, the general fund balance was \$6,275,018.

On the expense side, Administration, Parks & Recreation and Public Work are all under budget, while Emergency Services and Codes are both slightly over budget. Of particular note, the Public Works budget for snow removal was over budget by \$61,448; however, this was offset by savings across other Public Works line items. Administration was under-budget by \$36,537 due primarily to higher-than-expected insurance proceeds. On the revenue side, Earned Income Tax, Real Estate Tax and Other Income were all over budget, while Real Estate Transfer Tax, Local Services Tax and Franchise Fees were under budget.

Note that the Q1 reimbursement from the Fire Company (\$409,486) was received in early April.

Other funds

- The **State Liquid Fuels Fund** had \$553,313 in revenues and \$0 expenses. The fund balance was \$553,815. Note that the 2018 allocation from the state was made in early March.
- The **Sinking Fund** had \$5,248 in revenues and \$162,143 in expenses. The fund balance is \$5,867,136.
- The **Transportation Fund** had \$1,442 in revenues and \$0 in expenses. The fund balance is \$1,080,599.
- The **Sewer Operating Fund** had \$849,465 in revenues and \$705,659 in expenses. The fund balance is \$1,030,477.
- The **Refuse Fund** had \$251,409 in revenues and \$257,131 in expenses. The fund balance is \$608,406.
- The **Bond Fund** had \$23,984 in revenues and \$181,784 in expenses. The fund balance is \$7,178,523.
- The **Sewer Sinking Fund** had \$2,073 in revenues and \$15,358 in expenses. The fund balance is \$2,149,394.
- The **Operating Reserve Fund** had \$1,815 in revenues and no expenses. The fund balance is \$2,506,169.

Long-Range Budget Planning Session

I would like to schedule the long-range budget planning session for Wednesday, May 23rd at 10am. Please advise if this date and time does not work for you.

Accounts Receivable

Accounts receivable for Sewer & Refuse accounts stood at \$203,594 as of March 31st, which is the lowest level since at least 2010. Accounts Receivable on real estate tax bills after the March 31st deadline for the discount period was also a seven year low.

**EAST GOSHEN TOWNSHIP
GENERAL FUND SUMMARY
As of March 31, 2018**

Account Title	Annual Budget	YTD Budget	YTD Actual	Variance
EMERGENCY SERVICES EXPENSES	4,101,440	1,317,425	1,319,211	(1,786)
PUBLIC WORKS EXPENSES	2,637,576	529,175	540,448	(11,273)
ADMINISTRATION EXPENSES	2,218,972	507,208	510,861	(3,653)
CODES EXPENSES	465,911	114,088	117,292	(3,204)
PARK AND RECREATION EXPENSES	690,256	94,580	78,983	15,597
TOTAL CORE FUNCTION EXPENSES	10,114,155	2,562,476	2,566,795	(4,319)
EMERGENCY SERVICES REVENUES	77,628	7,622	8,415	793
PUBLIC WORKS REVENUES	1,010,195	117,530	173,278	55,748
ADMINISTRATION REVENUES	334,024	55,010	95,200	40,190
CODES REVENUES	259,725	53,466	51,050	(2,416)
PARK AND RECREATION REVENUES	140,976	27,424	21,516	(5,909)
TOTAL CORE FUNCTION REVENUES	1,822,548	261,052	349,458	88,406
NET EMERGENCY SERVICES	4,023,812	1,309,803	1,310,796	(993)
NET PUBLIC WORKS	1,627,381	411,645	367,169	44,476
NET ADMINISTRATION	1,884,948	452,198	415,661	36,537
NET CODES	206,186	60,622	66,243	(5,621)
NET PARK AND RECREATION	549,280	67,156	57,468	9,688
CORE FUNCTION NET SUBTOTAL	8,291,607	2,301,424	2,217,337	84,087
DEBT - PRINCIPAL	549,000	-	-	0
DEBT - INTEREST	249,458	27,455	27,457	(2)
TOTAL DEBT	798,458	27,455	27,457	(2)
TOTAL CORE FUNCTION NET	9,090,065	2,328,879	2,244,794	84,085
NON-CORE FUNCTION REVENUE				
EARNED INCOME TAX	5,181,600	1,163,486	1,198,764	35,278
REAL ESTATE PROPERTY TAX	2,026,129	1,829,020	1,857,017	27,997
REAL ESTATE TRANSFER TAX	575,000	143,750	118,071	(25,679)
CABLE TELEVIS.FRANCHISE	489,600	122,400	116,620	(5,780)
LOCAL SERVICES TAX	348,000	88,839	82,377	(6,462)
OTHER INCOME	469,736	16,596	17,458	862
TOTAL NON CORE FUNCTION REVENUE	9,090,065	3,364,091	3,390,306	26,215
NET RESULT	0	1,035,212	1,145,512	110,300

SUMMARY OF FUNDS REPORT (AKA "JOE REPORT")
ALL FUNDS MARCH 2018

* NOTE: GENERAL FUND INCLUDES PASS-THROUGH ACCOUNTS

	GENERAL FUND*	LIQUID FUELS STATE FUND	SINKING FUND	TRANSPORT. FUND	SEWER OP. FUND	REFUSE FUND	SEWER SINK FUND	OPERATING RESERVE	TOWNSHIP FUNDS	MUNICIPAL AUTHORITY	BOND FUND
01/01/18 BEGINNING BALANCE	\$5,531,289	\$502	6,024,031	1,079,157	886,672	614,128	\$2,162,678	\$2,504,354	\$18,057,119	\$142,331	7,336,323
RECEIPTS											
310 TAXES	\$3,387,562	\$0	\$0	\$0	\$0	\$0	\$0	\$0	\$3,387,562	\$0	\$0
320 LICENSES & PERMITS	\$510	\$0	\$0	\$0	\$0	\$0	\$0	\$0	\$510	\$0	\$0
330 FINES & FORFEITS	\$8,415	\$0	\$0	\$0	\$0	\$0	\$0	\$0	\$8,415	\$0	\$0
340 INTERESTS & RENTS	\$44,245	\$2	\$5,248	\$1,442	\$1,078	\$1,067	\$2,073	\$1,815	\$56,969	\$529	\$23,984
350 INTERGOVERNMENTAL	\$26,060	\$553,311	\$0	\$0	\$0	\$0	\$0	\$0	\$579,371	\$0	\$0
360 CHARGES FOR SERVICES	\$87,526	\$0	\$0	\$0	\$848,387	\$250,341	\$0	\$0	\$1,186,254	\$1,128	\$0
380 MISCELLANEOUS REVENUES	\$31,779	\$0	\$0	\$0	\$0	\$0	\$0	\$0	\$31,779	\$564	\$0
390 OTHER FINANCING SOURCES	\$171,517	\$0	\$0	\$0	\$0	\$0	\$0	\$0	\$171,517	\$30,000	\$0
	\$3,757,614	\$553,313	\$5,248	\$1,442	\$849,465	\$251,409	\$2,073	\$1,815	\$5,422,377	\$32,221	\$23,984
EXPENDITURES											
400 GENERAL GOVERNMENT	\$372,926	\$0	\$28,931	\$0	\$0	\$0	\$0	\$0	\$401,856	\$0	\$0
410 PUBLIC SAFETY	\$1,806,030	\$0	\$0	\$0	\$0	\$0	\$0	\$0	\$1,806,030	\$0	\$0
420 HEALTH & WELFARE	\$84	\$0	\$0	\$0	\$0	\$0	\$0	\$0	\$84	\$0	\$0
426 SANITATION & REFUSE	\$35,484	\$0	\$0	\$0	\$590,937	\$257,131	\$15,358	\$0	\$898,910	\$76,978	\$0
430 HIGHWAYS,ROADS & STREETS	\$439,129	\$0	\$81,550	\$0	\$0	\$0	\$0	\$0	\$520,679	\$0	\$0
450 CULTURE-RECREATION	\$68,467	\$0	\$50,837	\$0	\$0	\$0	\$0	\$0	\$119,304	\$0	\$181,784
460 CONSERVATION & DEVELOPMENT	\$299	\$0	\$825	\$0	\$0	\$0	\$0	\$0	\$1,124	\$0	\$0
470 DEBT SERVICE	\$28,382	\$0	\$0	\$0	\$84,722	\$0	\$0	\$0	\$113,104	\$0	\$0
480 MISCELLANEOUS EXPENDITURES	\$277,154	\$0	\$0	\$0	\$0	\$0	\$0	\$0	\$277,154	\$0	\$0
490 OTHER FINANCING USES	\$2,984	\$0	\$0	\$0	\$30,000	\$0	\$0	\$0	\$32,984	\$0	\$0
	\$3,030,939	\$0	\$162,143	\$0	\$705,659	\$257,131	\$15,358	\$0	\$4,171,230	\$76,978	\$181,784
2018 SURPLUS/(DEFICIT)*	\$726,675	\$553,313	(\$156,895)	\$1,442	\$143,806	(\$5,722)	(\$13,285)	\$1,815	\$1,251,147	(\$44,757)	(\$157,800)
CLEARING ACCOUNT ADJUSTMENTS	\$17,054										
03/31/2018 ENDING BALANCE	\$6,275,018	\$553,815	\$5,867,136	\$1,080,599	\$1,030,477	\$608,406	\$2,149,394	\$2,506,169	\$20,071,014	\$97,575	\$7,178,523



Public Input for Determining Risk Assessment Needs

A comprehensive list of public input and discussions
from various community meetings
Citizens' Risk Assessment Initiative

March 2018

ISSUED BY

Citizens' Risk Assessment Committee

Contact: riskassessmentcommittee@gmail.com

REPRESENTATIVE

Seth Kovnat, Project Engineer

Tom Casey, Risk Assessment Chair



Introduction

Del-Chesco United for Pipeline Safety is a nonpartisan, fact-based, grassroots coalition of locally-based safety and advocacy groups (*like Protect Penn Delco, Middletown Coalition for Community Safety, Goshen United for Public Safety, West Whiteland Residents for Safety, Uwchlan Safety Coalition, Upper Uwchlan Residents for Safety, Wallace Safety Coalition and East Goshen Safety and Environmental Advocates*), are made up of concerned residents from across Pennsylvania. Del-Chesco United's mission is to unite people through education and to encourage our elected officials to make informed policy decisions for the safety and well-being of our communities.

The Risk Assessment Initiative will use the data from the Quantitative Risk Assessment (QRA) in an attempt to answer all known questions and concerns that the public has inquired about over the past 4 years. The research will undoubtedly produce new questions once the modeling data and reports are revealed. This is an ongoing assessment process and some uncertainties will remain once the data is collected, but this QRA is the critical first step.



Funding Support

We need your help. Please make a contribution to this effort by choosing a direct payment at our [GO FUND ME](https://www.gofundme.com/citizens039-risk-assessment-of-me2) account,

<https://www.gofundme.com/citizens039-risk-assessment-of-me2>

Or you can contribute to this effort by making a donation to [CLEAN AIR COUNCIL](http://cleanair.org/donate/) and designate your contribution to the "Citizens' Risk Assessment: Mariner East". By making your contribution through Clean Air Council, your donation will be tax deductible and you will receive an annual membership to CAC as thanks for being a part of this Citizens' project. Your contribution will go 100% in full to the study.

<http://cleanair.org/donate/>



Public Input

Our process is to review all the factors that RISKS from pipelines bring to all communities. Especially when we are dealing with a company that has a less than stellar performance that could pose higher risks to Health, Safety, & Welfare.

Three Main Risk Categories:

LIFE

1. Loss of Life
 - a. Risk from explosions
 - i. Measure from varying levels underground
 - ii. Public infrastructure issues, ie. sewer systems
 - b. Risk from leaks
 - i. Both pipeline and above ground facilities
 - c. Risk from Horizontal Directional Drilling
 - i. HDD to this extent has never been done
 - ii. Potential impacts on communities
2. Health Concerns
 - a. Air
 - i. Flares, leaks, fire
 - b. Water
 - i. Wells, aquifers, public water
 - c. Ground
 - i. Farms, soil, erosion
 - d. Personal
 - i. Psychological impacts to community
 1. Stress
 2. PTSD type symptoms
 3. Feelings of fear/hopelessness
 - ii. Noise issues & their effects on health
 1. Lead to high blood pressure & heart attacks
 2. Developmental issues in children

3. Injury

- a. Fire
- b. Flying debris from over pressurization or explosion
- c. Self-evacuation concerns

PROPERTY

1. QRA output will provide risk of damage as a function of distance from the pipeline
 - a. Have actuary in the real estate field take the risk data and quantify property damage risk in dollars for specific predetermined locations
 - i. Huggins Actuarial located in Media (One example)
<http://hugginsactuarial.com/>
 - b. Consideration of an economics report on the negative impacts from the pipeline to compare to the Sunoco commissioned "all positive" economics report.
 - i. Would need input data from Sunoco's source material to compare
 - c. Insurability of property
2. Home values vs. Negative Stigmas
 - a. Get a nationally recognized Appraiser to report on issues surrounding pipeline development and operations
 - i. speak with John Hosey from Shelterfield (has access to national numbers) <http://www.shelterfield.com/>
 1. John evaluated the ME1 flaring tower and gathered credible nationally collected data
 2. Use the Actuary report to get appraisal issues from national sources
 3. Assess negative stigma associated with catastrophic events around the country.
3. Insurance concerns
 - a. Homeowners policy renewals
 - b. Homeowner Association issues (HOAs)
 - i. What happens to premiums
 - ii. Need to get information from Andover insurer
4. Zoning issues
 - a. How does a pipeline alter zoning districts?

- b. What is the impact to Municipal & County Comprehensive Planning
- 5. Quantify loss of different types of property
 - a. Value of lost homes and buildings
 - i. Quantify based on site specific impact radius (examples)
 - 1. CC Library Exton / Exton Mall
 - 2. Wellington and/or church zone
 - 3. Rt. 202 & Boot rd. (impact to loss of business)
 - 4. Marchwood neighborhoods
 - 5. Rt. 1 crossing/Granite Farms
 - 6. Glenwood/Riddlewood neighborhoods
 - 7. Aston/Judy Way area
 - 8. Marcus Hook
 - 9. Glenwood Elementary
 - 10. Boot Road Intersection near Wellington & Church/school
 - b. Value of lost business revenues
 - i. Rt. 202 & Boot road corridor (UPS, QVC, bus. parks)
 - ii. Eagleview area
 - iii. Exton mall and businesses on Rte. 100
 - iv. Goshen Corporate Centers
 - v. Aston (esp. ME1)
 - c. Value of lost schools
 - i. Chester Cty, get specific examples
 - ii. Delco, get specific examples

ENVIRONMENT

- 1. Impacts from HDD to wells, aquifers, lakes, streams
 - a. Get depths of public and private aquifers in the region
 - b. Value of lost well water
 - c. Value of contaminated or drained aquifers
- 2. Loss of wetlands; increased flooding
- 3. Loss of tree cover and habitat due to right-of-way clearing
- 4. What are the concerns regarding air issues
 - a. Consult with Clean Air Council
- 5. Various geologic issues for Mariner East path

- a. Karst topography concerns from drilling
- b. Sinkholes & subsidence (gradual sinking of an area of land)
- c. Regional geologic information



Risk/Benefit Analysis

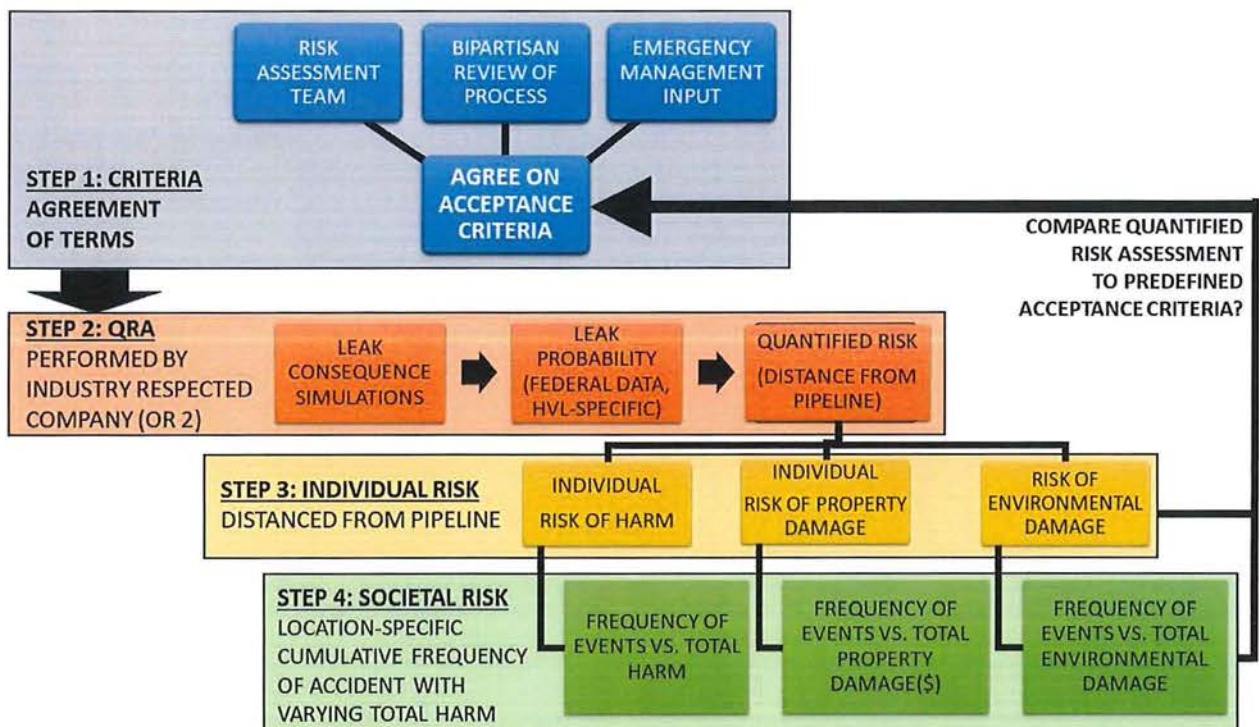
- What benefits are claimed by industry/Sunoco?
- What assurances does industry/Sunoco give about the risks?
- What are the actual benefits when correlated to the QRA?
- What are the actual risks per QRA?
- Better understanding for community.
- Better understanding for municipalities.
- Factual data for individuals to assess personal risk.
- A more informed community overall.



Conclusion

The community has engaged in the process of trying to understand the risks we are all facing with regards to pipeline development in our communities. They have spoken up at countless township meetings, public events sponsored by the industry, public & private events sponsored by community groups, and even traveled to the state capital to engage with the governor of Pennsylvania and other state representatives. But the questions still remain. What are the risks? What should I do in the event of a gas release? What is the impact to our community? What will happen afterwards? How will these projects impact my home value? These questions, and many more, demand answers. The Citizens' Risk Assessment will attempt to answer them, so that the public & municipalities understand the risks we are being forced to live, work, shop, travel, and play in & around.

Process Flowchart





Appendix

Links for comparison assessments

Explanation of F-N plot (Societal Risk)

<http://onlinelibrary.wiley.com/doi/10.1002/9780470552940.app1/pdf>

http://proceedings.esri.com/library/userconf/petrol16/papers/petrol_22.pdf

<http://www.cheminst.ca/sites/default/files/pdfs/Connect/PMS/Pipeline%20QRA.pdf>

[http://www.pipelinerrisk.com/pdf/Enhanced PL Risk Assess Part 2%20rev3.3.pdf](http://www.pipelinerrisk.com/pdf/Enhanced_PL_Risk_Assess_Part_2%20rev3.3.pdf)

[http://www.windot.com/docs/federal/ntsb/PHMSA_research/pdf/DTPH5615T00003L -
_Criticatl_Review_of_Candidate_Pipeline_Risk_Models_-_Final_Report.pdf](http://www.windot.com/docs/federal/ntsb/PHMSA_research/pdf/DTPH5615T00003L_-_Criticatl_Review_of_Candidate_Pipeline_Risk_Models_-_Final_Report.pdf)

http://www.dec.ny.gov/docs/legal_protection_pdf/20120216questgra.pdf

[http://www.penspen.com/wp-content/uploads/2014/09/risk-assessment-new-guidelines
.pdf](http://www.penspen.com/wp-content/uploads/2014/09/risk-assessment-new-guidelines.pdf)

<http://www.middletowncoalition.org/copy-of-sen-killion-rep-quinn-lette>



Quantitative Risk Assessment

Request For Proposal: Scope of Work
Citizens' Risk Assessment Initiative

March 2018

ISSUED BY

Citizens' Risk Assessment Committee

Contact: riskassessmentcommittee@gmail.com

REPRESENTATIVE

Seth Kovnat, Project Engineer

Tom Casey, Risk Assessment Chair



Introduction & Background

The Citizens' Risk Assessment Initiative is accepting proposals in response to this Request for Proposal (this "RFP," or this "Request for Proposal") in order to find qualified firms to quantify the risk associated with operation of artificially liquefied Ethane, Propane, and Butane pipelines in densely populated areas. This data-driven Quantitative Risk Assessment (QRA) will use simulations and statistical likelihood to quantify and assess risk, comparing the results to risk acceptance criteria. The goal of this QRA is to evaluate the risk of highly volatile liquids (HVL) transmission pipelines routed through densely populated areas.

A proposed pipeline project seeks to operate and install 3 co-located HVL transmission pipelines through densely populated suburban Philadelphia. The unique risks to public safety that come with running artificially liquefied, highly combustible gas transmission pipelines through high consequence areas have yet to be adequately assessed. The route was chosen in order to reuse or parallel existing Rights of Way (ROW), but with no federal route oversight (due to classification as an intrastate hazardous liquids pipeline) and no state route oversight (due to Pennsylvania not having a regulatory body responsible for pipeline routing).

The objective of this Request for Proposal is to identify a source that will provide the best overall result to the Citizens' Risk Assessment Initiative. While price is a significant factor, other criteria will form the basis of our award decision, as more fully described in the Evaluation Factors section of this Request for Proposal.

The main goals of this assessment project are:

1. To address the risks & impacts of pipeline development on the identified three main risk categories -- **LIFE, PROPERTY, and ENVIRONMENT**.
2. To help to define unknown risk factor data, then compare/contrast to already established industry risk data.
3. To understand the level of risks posed on each of the three risk categories, and compare it to already established acceptable levels of risk.
4. To provide a risk assessment that is readily available to the general public.



Project Scope

The scope of the project entails Quantitative Risk Assessment for Natural Gas Liquids pipelines. The Mariner East Project pipeline route will be used to quantify leak consequences, statistical probability, individual human/property risk, and total human/property loss frequency for a multitude of variables.

The goal of this assessment is to provide a risk assessment tool not only for evaluating Mariner East pipelines, but any and all existing or future NGL pipelines. In order to do this efficiently, the Mariner East 2 pipeline route will be used as a baseline route to provide flow characteristics for variable pipeline characteristics (i.e. flow materials, pipe characteristics, diameter, pump station discharge pressure, pump station spacing, etc.).

Variables Shall Envelope Pipeline Operation Details

Any and all information that is typically provided by the pipeline operator (i.e. specific NGL mixtures, discharge pressure, flow characteristics, etc.) shall be used as variables and varied to envelope all plausible scenarios to encompass Mariner East project and any other potential NGL project possibilities.

NGL flow shall be simulated appropriately to reflect phase change physical chemistry. Flow simulations can be generic. However, local pressures, temperatures, and density for the flowing product is requested as output at critical features (i.e. valves, pre/post-pumps, end-of-line).

To envelope flow and leak characteristics, analysis is requested for:

- a) Pipe diameter sensitivities:
 - i) 4in, 8in (ME1), 12in, 16in (ME2X), 20in (ME2), 24in, 30in, 36in.
- b) Pumping station sensitivities:
 - i) Pumps assumed to be located 85 miles apart.
 - ii) Intermediate pumping stations added at 43 mile spacing as permitted in approved DEP applications.

- iii) Variable pumping station discharge pressures: 1500psi (MAOP), 1200psi, 1,000psi, 800psi
 - iv) Request recommendations based on safe local operating pressures for different NGL mixtures, specifically pure ethane that has highest critical pressure.
 - v) Determine local operating pressure lower threshold where risk significantly increases due to volatility within normal operation
- c) Flow material mixtures:
 - i) 100% Ethane
 - ii) 100% Propane
 - iii) 100% Butane
 - iv) Y-Grade NGL
 - v) Other common NGL mixtures
 - vi) Methane Natural Gas

Plausible Leak Scenarios

Plausible leak scenarios shall be simulated using industry approved software.

Independent of actual features along the Mariner East route, hazards shall be simulated with a variety of risk factors. These risk factors include, but are not limited to terrain, topography, geology, presence of buildings/trees, proximity to sewers/karst, proximity to ignition sources, etc. Standard leak analysis shall be simulated. However, consideration of critical leak hole size must be either discussed qualitatively or derived analytically (preferred). There may be a

These variables shall envelope all plausible pipeline uses and characteristics, providing sensitivity analysis that shows how risk varies with each different parameter.

- d) Pinhole leak hole sizes (1/8", 1/4", 1/2" and 3/4" holes, rupture)
 - i) Determine if ALL leaks greater than the "CRITICAL LEAK HOLE SIZE" for each pipe diameter and product (defined below) must be combined and treated with full rupture consequences.
- e) Phase change volatility at cryogenic temperature shall be calculated for each assessed product to determine "CRITICAL LEAK HOLE SIZE":

- 1) Determine mixtures/pipe diameter/leak hole size combinations that have adiabatic expansion gas temperatures below API 5L Carbon Steel embrittlement temperature
 - (a) Discuss whether it is plausible for small leaks of gas below API 5L Carbon Steel embrittlement temperature can propagate a leak hole into full rupture
- 2) Determine mixtures/hole size combinations that have adiabatic expansion gas temperatures below Viton embrittlement temperature. (Viton is used at valve/pump/inspection access above ground features for O-Rings and Seals)
 - (a) Discuss Viton seal performance when subjected to released gas below its embrittlement limit.

Failure Mode Considerations

- f) Undocumented Digging in someone's yard/land/farm
- g) Trenching failure/error during commercial/institutional/industrial construction
- h) Corrosion (i.e., seam failure, air to ground interface failure, etc.)
- i) Weld failure
- j) Field Bend Failure
- k) Valve Breaking
- l) Valve gasket failure
- m) Equipment port failure
- n) Ground shifting (Karst, heavy rain, etc.)
- o) Shutdown/deinventory issues during emergencies or sudden events elsewhere online

Other Relevant Pipeline Sensitivities

- p) Use of outdated welding methods (ME1)
- q) Variable age (new, 20 years, 80+ years old)
- r) Large diameter seam-welded (ME2, ME2X)
- s) Straight pipe vs. pipe with excessive field bends as it navigates around residences, roads, etc.
- t) Different Pipeline features

- i) Valve Stations
- ii) Pump Stations
- iii) Variable Depth 3ft, 6ft, 12ft buried pipe, 50ft HDD, 100ft. HDD
 - 1) Consideration in the event that drilling fluid dries out and leaves full/partial open-air annulus surrounding HDD-installed pipe

Probability

- u) Assess leak rates for both industry average AND worst Hazardous Liquids transmission pipeline operator to show sensitivity
- v) Leak data sources:
 - i) Federal leak data (self-reported)
 - ii) Enforcement Actions (Unreported but verified)
 - iii) Other publicly available source with references required
- w) Account for risk factors specific to densely populated areas (Rural vs. Suburban)
 - i) Delayed ignition likelihood in areas with many ignition sources
 - ii) 3rd party damage (accidental or malice) with pipeline located on private property.
- x) Factor in likelihood of HVL pipeline leaks compared to traditional Liquid pipelines
- y) Account for multiple pipelines in shared ROW
- z) Account for crossing other pipelines at specific locations
- aa) Account for different materials (ethane) and thermal risks to pipeline (especially for two-phase flow)
- bb) Consideration of pipeline run through unstable terrain (i.e. karst) that can fail from ground shifting/sinking.
- cc) Consideration of HDD pipe that is in constant bending preload.
- dd) Consideration of large diameter pipe that has be cold-formed in the field.

Risk Mitigation Discussion

- ee) Comment on use of deinventory tanks at valve sites
 - i) Procedures to deinventory lines at each valve site
 - ii) Procedures to reverse flow to deinventory line(s) to place material at safe locations

- iii) Procedures to allow/manage portable/temporary combustion units at valve sites to deinventory line(s)
- iv) Permits that may be required in advance to allow for reasonably anticipated shutdown procedures?
- ff) Comment on use of Automatic Valves
 - i) Explore difference between best-case Automatic Shutdown and Delayed Shutdown
 - ii) Estimate of minimum time to invoke Emergency Shut-Down (ESD)
 - iii) Estimate of minimum pressure loss to invoke ESD
 - iv) Estimate of expected material loss before control room identifies minimum pressure loss to invoke ESD

First Response Comments and Discussion Requested

- gg) Safe-Distance setbacks for First Responders in different plausible leak scenarios: Prior to Ignition, During Post-Ignition Jet Fire, etc.
 - i) Note time durations for each scenario (i.e. how long until 5 mile isolated segment deinventories via jet fire)
- hh) Amount of space required to accommodate first responders and support equipment in event of valve site failure
- ii) Amount of space required to accommodate first responders and support equipment in event of line failure
- jj) Valve site detectors to evaluate early warnings of potential leaks, networking of these detectors to first responders, and community warning
- kk) Community notification in densely populated residential and institutional settings?
- ll) Utility protection in emergencies?
- mm) First responder access protocols, incident command hierarchy?
- nn) How to perform a pig dig in HDD segments >>20' below grade?
- oo) What anomalies are smart pigs missing and how to manage pipes the operator cannot visually inspect?
- pp) Leak Response Infrastructure:
 - i) Water supply requirements and protection in emergencies
 - ii) What infrastructure required to extinguish jet fire?

- iii) What infrastructure required to promote gas concentration dissipation below combustion levels?
- iv) Effectiveness of on-site gas leak detectors at valve/pump stations
- v) Can above ground features be enclosed in ballistics bunker?

Acceptance of the work is contingent on the following acceptance criteria:

1. Final report providing results with all inputs and assumptions stated clearly, as well as references. The report must include the following:
 - a. Summary of results with discussion of their meaning and description of how the data can be used with stated limitations.
 - b. Hazards zones (i.e. blast radius) identified around pipeline route and features.
 - c. Individual Risk to humans and property quantified around pipeline route and features provided for the different variables identified herein.
 - d. Risk of Total Human (lives) and Property Loss (USD) based on public data from census and tax records or other referenced public sources.
 - e. Individual and Total Loss Risk shall be provided in a way that allows interactive calculation of risk that can be applied to NGL or Natural Gas pipelines in the event of risk factor changes
 - i. Ability to update risk based on presence of different risk factors
 - ii. Ability to transpose risk onto a different route that has same variables and risk factor combinations

RFP & Project Timelines

The Request for Proposal timeline is as follows:

Request for Proposal Issuance	2/12/2018
Start of Negotiation	2/24/2018
Contract Award / Upon agreement with committee	3/5/2018

The need-date for project completion is 4-6 weeks from time of bid acceptance. Bidders may propose a date earlier or later, and will be evaluated accordingly.



Budget

The Citizens' Risk Assessment Initiative budget for the project will be determined based on scope of work performed, private fundraising efforts, and municipal partner contributions. Estimates will be directly impacted by the amount of viable options made available to the Risk Assessment. Initially the estimate for completion is **\$50,000 (USD)**.

Costs will be itemized out after preliminary consultation with the chosen vendor. The Citizens' Risk Assessment Initiative will determine the best way to proceed with available funds raised. Scope of work will be a Time & Materials approach. Updates are to be provided from vendor via email or status report on a bi-weekly basis. Invoices are expected every month. The Time & Materials approach will be restricted by a Not to Exceed dollar value based on available funds.



QRA Vendor Search & Selection Parameters

Vetting outline for selection of a quality company to
assess levels of risk for pipeline development
Citizens' Risk Assessment Initiative

January 2018

ISSUED BY

Citizens' Risk Assessment Committee

Contact: riskassessmentcommittee@gmail.com

REPRESENTATIVE

Seth Kovnat, Project Engineer

Tom Casey, Risk Assessment Chair



Summary

The Citizens' Risk Assessment Initiative engaged in a comprehensive search to find qualified firms that have the right combination of capability, credentials, integrity, and interest required to properly assess risk from Natural Gas Liquids pipelines across the Commonwealth of Pennsylvania.

There are a multitude of risk factors associated with the operation of artificially liquefied Ethane, Propane, and Butane pipelines in densely populated areas. The importance of finding a qualified company to assess the risks was paramount for the Citizens Risk Assessment Team.

The primary objective of this risk assessment is to quantify risk along the Mariner East pipeline route for any and all reasonable operational and environmental variations. The assessment results will provide any member of the public the ability to determine their own personal life/property risk while also providing government and emergency services the ability to determine the potential risk magnitude to populations and property.

Performing the assessment using a multivariate approach will efficiently provide a very powerful results package for a number of reasons:

- 1) Sensitivity analysis of different operational data ensures that the assessment will cover any and all operational variations throughout the life of the pipeline. This includes material mixtures, pipe diameters, pump station spacing, pump discharge pressure, etc. This analysis can be expanded to include Methane Natural Gas and other materials being shipped via transmission pipelines in our area.
- 2) Sensitivity analysis of different environmental risk factors will allow the results to be used to determine risk in the event risk factors change along the current route. More importantly, this sensitivity allows the results of this risk assessment to be applied to ANY existing or potential new Right of Ways given they have the risk factors covered in this analysis. The ability to determine risk for any existing or future planned NGL pipeline infrastructure is a very power tool that can ensure future planning is data driven.
- 3) Sensitivity analysis will objectively show how potential installation issues (as documented from DEP Notices of Violations) affect risk.
- 4) Sensitivity analysis will objectively show how potential mitigation attempts affect risk.

Under normal circumstances, land-use is regulated at the local level by municipalities many of whom have a comprehensive safety ordinances for zoning. For this pipeline application, most municipalities that have such ordinances have been hesitant to apply them given the project's eminent domain authority that has been applied to Mariner East by the PA PUC. The few municipalities that have tried to enforce their safety-related pipeline zoning ordinances, have not been armed with quantifiable risk data to support safety related municipal concerns. Instead, municipalities have relied on high level federal government regulations, echoed at the state level, that fail to address local risks to communities.

Having quantifiable risk data empowers communities, local municipalities, emergency personnel, schools, and private citizens alike. With quantifiable data:

- 1) Private citizens can decide how much risk they can tolerate.
- 2) Municipalities can see where risks are heightened and decide what measures can be taken to mitigate risks.
- 3) Emergency personnel can see what magnitude of emergency is possible and decide what infrastructure they require to proactively minimize carnage while planning realistic evacuation procedures and routes.
- 4) All of us can use this data to make reasonable requests to the pipeline operator or higher levels of government in the name of risk mitigation.

Overall, we can qualitatively state that the consequences of a Mariner East pipeline leak have the potential to be catastrophic. Many perceive that the probability of a catastrophic leak is low. We must move past qualitative statements and obtain real quantitative data. Data is a very effective tool to mitigate risks, protect property interests, and give landowners the ability to assess levels of risk and how they may impact their health, safety, and welfare. For these reasons it was crucial for our search parameters to find a qualified risk assessment firm that can provide all of the necessary answers in a way that maintains the highest level of integrity.



Search Parameters

The first level of search parameters focused on what is most important to engaging with a qualified risk assessment firm.

Required:

- 1) Vendor must regularly work in oil and gas industry.
- 2) Vendor must use simulation to determine flow characteristics and leak consequences.
- 3) Vendor must use well-respected risk assessment process.
- 4) Vendor must have high standards for integrity and unbiased quantifiable risk assessment.
- 5) Vendor must have history of working with industry, government, and emergency services.
- 6) Vendor must be held in high regard with PHMSA and DOT.
- 7) Vendor must recognize and be capable of efficiently assessing any and all potential risk factors that can affect an NGL pipeline in a densely populated area.
- 8) Vendor must be capable of simulating phase change and two phase flow associated with HVLs.
- 9) Vendor must have streamlined process for assessing multiple variables that fully envelope all potential risk factors and operational scenarios.
- 10) Vendor must have strong interest in generating new risk data in an area lacking data driven regulation.

The second level of search parameters were critical for any firm that would be chosen. These parameters would help to ensure the quality of the work being produced. Also, they would allow for limited dispute of findings.

Preferred:

- 1) Vendor should be considered a preferred vendor with PHMSA or other regulating agencies.
- 2) Vendor should have no current relationship with Sunoco Logistics, Energy Transfer Partners, or any subsidiaries of these companies.
- 3) Vendor should be an industry leader in risk assessment and consequence modeling.
- 4) Vendor should have history of educating the industry and/or government and/or emergency services.
- 5) Vendor should have option to teach public or other entities.



Selected QRA Vendor Qualifications

1. Vendor has advised and provided for US Department of Transportation (DOT)-sponsored study of pipeline risk management.

2. Provided training for DOT federal and state pipeline risk management auditors.
3. Consulting projects for numerous pipeline operators in the U.S. and in over ten foreign countries.
4. Provided expert witness testimony and report preparations for court proceedings involving previous work.
5. Has helped numerous local and federal government agencies regarding possible impacts arising from pipeline projects.

The company has been in operation for over 25 years, with experts that have a combined 65 years experience in operations, construction, design, and maintenance. The founder is a noted lecturer, software designer, and author. They have a wide range of clients from a variety of sectors including academia, legal firms, engineering companies, insurers, and industry professionals. They specialize in risk assessments and integrity management plans for pipeline development with an emphasis on providing educational workshops that give their clients the power to use the results in the way that best suits the customer needs.

The company's engineering experts have helped to provide consulting services such as:

1. Compliance Assessments – based on current government regulations and industry practices;
2. Risk Management – based on risk reduction versus resource allocation analysis methods; cost/benefit analyses;
3. Risk Assessments – based on new and improved quantitative methods and proven consequence analysis methods;
4. Custom Software Development – risk assessment and management, database management and engineering application program development.
5. Risk Management Workshops – risk management presentations and workshops;
6. Ownership Transfer Due Diligence – compliance and risk assessment approaches;
7. Procedure Development – operations, maintenance, emergency & management procedures;
8. Personnel Training – on site refresher & custom training programs;

The company operates under some guiding principles. First, they are committed to technical excellence. They will continue to develop and efficiently apply the optimal risk management tools in order to best meet the needs of their clients. They strive to consistently provide the most cost effective solutions for their clients. They vow to never advise a client to spend resources in an inefficient manner. Reliability in services provided

helps meet or exceed established client expectations; the result is a long-term client relationship and a reputation for delivering sound solutions under high public and government scrutiny. And finally, they prides themselves in providing objective and unbiased information to clients ensuring an unquestionable level of integrity and professionalism.



Conclusion

The Citizens' Risk Assessment utilized input from years worth of input from the countless public meetings being held across the state. The need for a quality report grows with each new pipeline project being considered in the state of Pennsylvania. The rush to get these projects completed without knowing the true impacts would be a mistake. The industry only tells communities what they want them to know. The community has determined that it wants to know more, to have true understanding of the risks involved.

XXXXXXX TOWNSHIP

XXXXX COUNTY, PENNSYLVANIA

RESOLUTION NO. XX-2018

A RESOLUTION of the Board of Supervisors of XXXXXXXX Township, XXXXX County, Pennsylvania recognizes the real threat to health, welfare and safety of township residents due to the development of hazardous liquids transmission pipeline projects in areas defined by the Pipeline and Hazardous Materials Safety Administration (PHMSA) as a “high consequence area.”

WHEREAS, XXXXXXXX Township is classified by PHMSA as a “high consequence area”, meaning the result of a pipeline incident within XXXXXXXX Township would could have catastrophic impacts to life, property and the environment; and

WHEREAS, more than one hazardous liquids pipelines transmitting highly volatile NGL - ethane, butane and propane that are odorless, colorless, heavier than air and under extreme pressure are currently transmitting or planned to transmit through the probable impact radius of residential, school and public spaces within XXXXXXXX Township; and

WHEREAS, Title 35, Chapter 77 of the PA Code states that the Governor shall consider on a continuing basis steps that could be taken to prevent or reduce the harmful consequences of disasters; and

WHEREAS, Governor Wolf and the PUC have failed to conduct a risk assessment associate with transmission of highly volatile NGLs through high consequence areas like Chester and Delaware Counties; and

WHEREAS, Citizens of the Commonwealth of Pennsylvania and XXXXXXXX Township have a right to understand the risks that they face in their homes, schools and communities;

NOW THEREFORE, BE IT ENACTED AND RESOLVED by the Board of Supervisors of XXXXXXXX Township, XXXXXXXX County, Pennsylvania that the Board expresses its deep concern about the absence of this information for community outreach and the proper and thorough planning for disaster prevention and emergency response to an NGL pipeline failure within the Township; the Board adopts the following:

1. In response to the absence of a quantitative assessment of the risk related to currently in service and under construction pipeline infrastructure projects within XXXXXX Township, the XXXXXX Township Board of Supervisors support the Citizens-led Risk Assessment.
2. Contributing financial support in the amount of \$15,000 to the funding of an independent study conducted by an independent and reputable firm contracted by the Citizens-led Risk Assessment Committee according to the qualifications outlined in exhibit A.
3. Agree to conduct any further assessment or evaluation based on this data commissioned by XXXXXX Township through the Citizens-led Risk Assessment Committee for a period of one year from the release of the final assessment report.
4. And to support the Citizens' Risk Assessment in any meaningful way possible.

RESOLVED this _____ day of March, 2018, by the Board of Supervisors of XXXXXX Township, XXXXXX County, PA at the regular meeting of said Board.

BOARD OF SUPERVISORS
XXXXXX TOWNSHIP
XXXXXXX COUNTY, PENNSYLVANIA

, Chairman

, Vice Chairman

, Supervisor

Attest: _____

Memo

East Goshen Township

Date: April 11, 2018
To: Board of Supervisors
From: Rick Smith, Township Manager
Re: Interstate Energy Company LLC Pipeline Easement

Interstate Energy Company LLC currently owns and operates a pipeline that runs through the Township Open Space in the Wentworth development, which is located at Boot Road and Paoli Pike. The pipeline is currently used to transport oil and this is reflected in the current easement.

Adelphia Gateway LLC has an agreement to purchase Interstate Energy Company LLC and repurpose the existing pipeline to transport natural gas. However, before this can happen, Interstate Energy Company needs to amend the easement to allow for the transportation of natural gas.

I would note that there is no change in the area of the easement - only a change in the product that is being transported through the pipeline.

There is an existing valve on the pipeline that is located just north Paoli Pike. As an additional safety measure, I would recommend that bollards be installed between Paoli Pike and this valve.

Interstate Energy Company LLC has provided the Township with their standard amendment to the easement and offered \$250 in compensation. The Township Solicitor and I subsequently reviewed and revised the amendment; and we have negotiated a consideration of \$5,000 for amending the easement.

We recommend that the Board approve the amended easement.

Suggested Motion: I move that we adopt Resolution 2018-178 authorizing the Chairman to execute the amended easement agreement with Interstate Energy Company LLC, with the condition that Interstate Energy Company LLC and/or Adelphia Gateway LLC provide written confirmation that they will install four pipe bollards (as show on the attached detail) within the easement between Paoli Pike and the valve; and authorize the Township Manager to release the executed amended easement agreement to Interstate Energy Company LLC upon the receipt of the written confirmation and the \$5,000.

EAST GOSHEN TOWNSHIP
CHESTER COUNTY, PENNSYLVANIA

RESOLUTION NO. 2018-178

A RESOLUTION OF THE TOWNSHIP OF EAST GOSHEN, CHESTER COUNTY, PENNSYLVANIA, AUTHORIZING THE BOARD OF SUPERVISORS TO ENTER AN AMENDMENT OF RIGHT OF WAY GRANT WITH INTERSTATE ENERGY COMPANY, INC. FOR PROPERTY OWNED BY THE TOWNSHIP LOCATED ALONG PAOLI PIKE.

WHEREAS, the Township is the owner of a 20.60 parcel of real property located along the north side of Paoli Pike, identified as Chester County Tax Parcel No. 53-4-255 (the "Property"); and

WHEREAS, the Property is encumbered by a right of way grant in favor of the Grantee, Interstate Energy Company, which was granted by the Township's predecessor in title and is recorded in the Chester County Recorder of Deeds in Book 211, page 231 (the "Right of Way Grant"); and

WHEREAS, Interstate Energy Company has requested the Township to amend the Right of Way Grant to allow the transportation of odorized natural gas and its associated hydrocarbons through the existing pipeline which traverses the Property; and

WHEREAS, the Township has agreed to execute an Amendment of Right of Way Grant in the form which is attached hereto and for the consideration of Five Thousand (\$5,000.00) Dollars;

NOW THEREFORE BE IT RESOLVED by the Board of Supervisors of East Goshen Township that the Chairman of the Board, E. Martin Shane, is authorized to enter the Amendment of Right of Way Grant in the form which is attached hereto and the Order for Payment which is also attached hereto.

RESOLVED this ____ day of _____, 2018.

ATTEST:

**EAST GOSHEN TOWNSHIP
BOARD OF SUPERVISORS**

Louis F. Smith, Secretary

E. Martin Shane, Chairman

Carmen R. Battavio, Vice-Chairman

Janet L. Emanuel, Member

Michael P. Lynch, Member

David E. Shuey, Member

This instrument prepared by
and upon recording, return to:

Western Land Services, Inc.
1100 Conrad Industrial Drive
Ludington, MI 49431

AMENDMENT OF RIGHT OF WAY GRANT

This Amendment of Right of Way Grant (the "Agreement"), made this ____ day of _____, 20____, by and between East Goshen Township, (hereinafter the "Grantor"), whose mailing address is 1580 Paoli Pk, West Chester, PA 19380, and INTERSTATE ENERGY COMPANY LLC, (hereinafter the "Grantee"), whose mailing address is 214 Shoemaker Road Pottstown, PA 19464.

WHEREAS, The Grantor, or its predecessor in title, John Albrecht, Jr. and Virginia Albrecht, h/w and also Conrad J. Albrecht, Jr. and The First Pennsylvania Banking and Trust Company of Philadelphia, Executors and Trustees under the Will of Conrad J. Albrecht, deceased, granted and conveyed to Grantee, a Right of Way Grant across lands described below.

That Right of Way Grant, dated 9/6/1973 and recorded 9/10/1973 in the office of the Recorder of Deeds, Chester County, Pennsylvania, as Book/Page 211/231 or Document/Instrument #N/A.

Located all or in part of East Goshen Township, Chester County, Commonwealth of Pennsylvania, and described as follows:

Tax Parcel Number (s): 53-4-255

Bounded substantially by lands now and/or formerly owned as follows:

On the North by lands of:	<u>53-4-24.2; 53-4-36.1E; 53-4-36.1D</u>
On the East by lands of:	<u>SMALL TRACTS</u>
On the South by lands of:	<u>PAOLI PK</u>
On the West by lands of:	<u>SMALL TRACTS</u>

Notwithstanding said Tax Parcel Number(s) designation, this Amendment of Right of Way Grant shall be effective as to the tract(s) actually owned by Grantor whether or not the Tax Parcel Number(s) correctly identifies the location of the tract(s).

WHEREAS, Grantor and Grantee agree to amend the Right of Way Grant to clearly allow for the addition of transportation of natural gas and its associated hydrocarbons through one (1) pipeline, not to exceed twenty (20) inches in diameter. The following paragraph shall be added to and made a part of the Right of Way Grant:

“Grantor hereby grants to Grantee the right to transport natural gas and its associated hydrocarbons through one (1) pipeline and all rights granting oil and related products herein shall also apply to natural gas and its associated hydrocarbons. The percentage of hydrocarbons in the odorized natural gas shall be limited to the percentage typically found in odorized natural gas that is supplied to residential gas customers in East Goshen Township. This right is limited to the transportation of natural gas and its associated hydrocarbons through one (1) pipeline, not to exceed twenty (20) inches in diameter, and shall not be construed as a grant to allow the installation of any additional pipelines or the transportation of natural gas liquids such as but not limited to propane, butane and ethane through any pipeline.”

WHEREAS, Grantor and Grantee agree that this Amendment of Right of Way Grant supplements, forms part of, and amends the Right of Way Grant. In the event of a conflict between the terms of the Right of Way Grant and the terms of this Amendment of Right of Way Grant, the terms of this Amendment of Right of Way Grant shall govern and take precedence notwithstanding anything to the contrary.

NOW, THEREFORE, for good and valuable consideration, the receipt of which is hereby acknowledged, the Grantor, ratifies, adopts and confirms the Right of Way Grant, as amended hereby, acknowledging that the Right of Way Grant now includes the ability for the Grantee to utilize the right of way and perpetual easement for the transporting of natural gas and its associated hydrocarbons.

EXCEPT AS AMENDED HEREBY, The Right of Way Grant shall remain unchanged and the Grantor declares the Right of Way Grant as herein amended to be valid, legally binding and in full force and effect.

This Amendment of Right of Way Grant is signed by Grantor and Grantee, intending to be legally bound, as of the date of the acknowledgment of their signatures below, but is effective for all purposes as of the date of the first acknowledgement below.

[Signature pages follow]

INTERSTATE ENERGY COMPANY LLC

ACKNOWLEDGMENT

On this, the _____ day of _____, 201____, before me _____, the undersigned officer, personally appeared _____, who acknowledged himself/herself to be the _____ for Interstate Energy Company LLC, a _____ limited liability company, and that he/she as such _____, being authorized to do so, executed the foregoing instrument for the purpose therein contained by signing the name of the limited liability company by himself/herself as _____.

My Commission Expires: _____, Notary Public

Page 4 of 4

East Goshen Township

Title: Chairman

COMMONWEALTH OF PENNSYLVANIA)
)SS:
COUNTY OF CHESTER)

In witness whereof, I hereunto set my hand and official seal.

My Commission Expires: _____, Notary Public

ORDER FOR PAYMENT
AMENDMENT OF RIGHT OF WAY GRANT

Grantee shall make payment to Grantor, as indicated herein by check within fourteen (14) business days of the execution of the Amendment of Right of Way Grant associated herewith. No default shall be declared for failure to make payment until 10 days after written notice from Grantor of intention to declare such default. The right to receive this payment shall not be assigned, whether as collateral or otherwise.

For collection, the original copy herein must be submitted directly to Grantee at the address below along with an executed original Amendment of Right of Way Grant.

PAYEE (Grantor): EAST GOSHEN TOWNSHIP
Address: 1580 PAOLI PK
WEST CHESTER, PA 19380
TELEPHONE: _____

The amount of: (\$5,000.00) Five Thousand and 00/100's Dollars

This payment represents full consideration for an Amendment of Right of Way Grant dated _____, 2018, covering the following described lands:

COMMONWEALTH OF PENNSYLVANIA COUNTY: CHESTER
TOWNSHIP: EAST GOSHEN TAX PARCEL NUMBER(S): 53-4-255

If Grantor owns less than the full interest in the above described land, then the amount of the Pipeline Easement fee shall be reduced proportionately.

Issued on behalf of Grantee by: _____ Accepted this ____ day of _____, 201____,
by: _____

_____, Agent Grantor: **East Goshen Township**
Western Land Services, Inc.

Working on behalf of

INTERSTATE ENERGY COMPANY LLC
214 Shoemaker Road
Pottstown, PA 19464

By: E. Martin Shane
Title: Chairman

FOR OFFICE USE ONLY

Date Received:

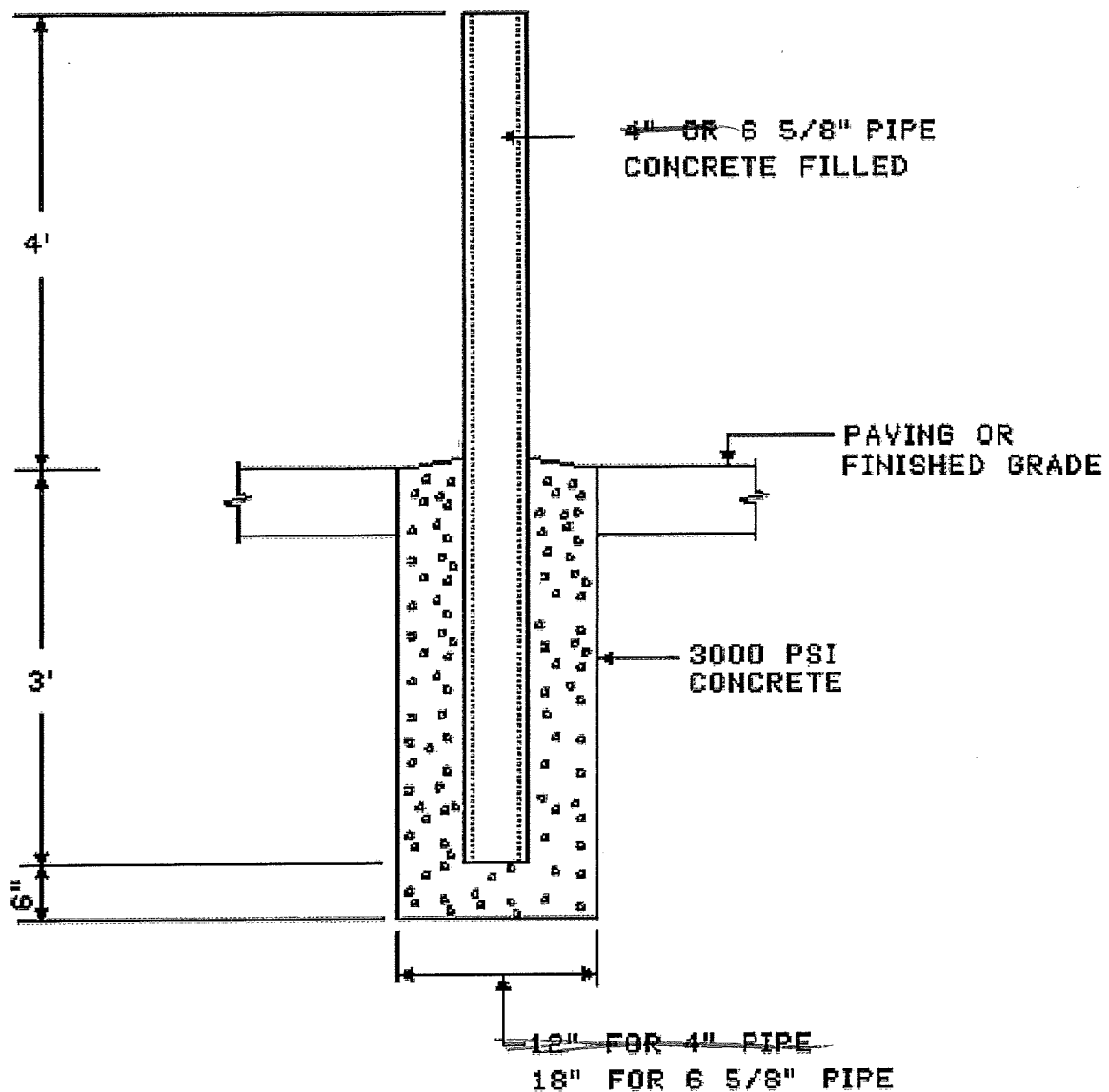
Date Due:

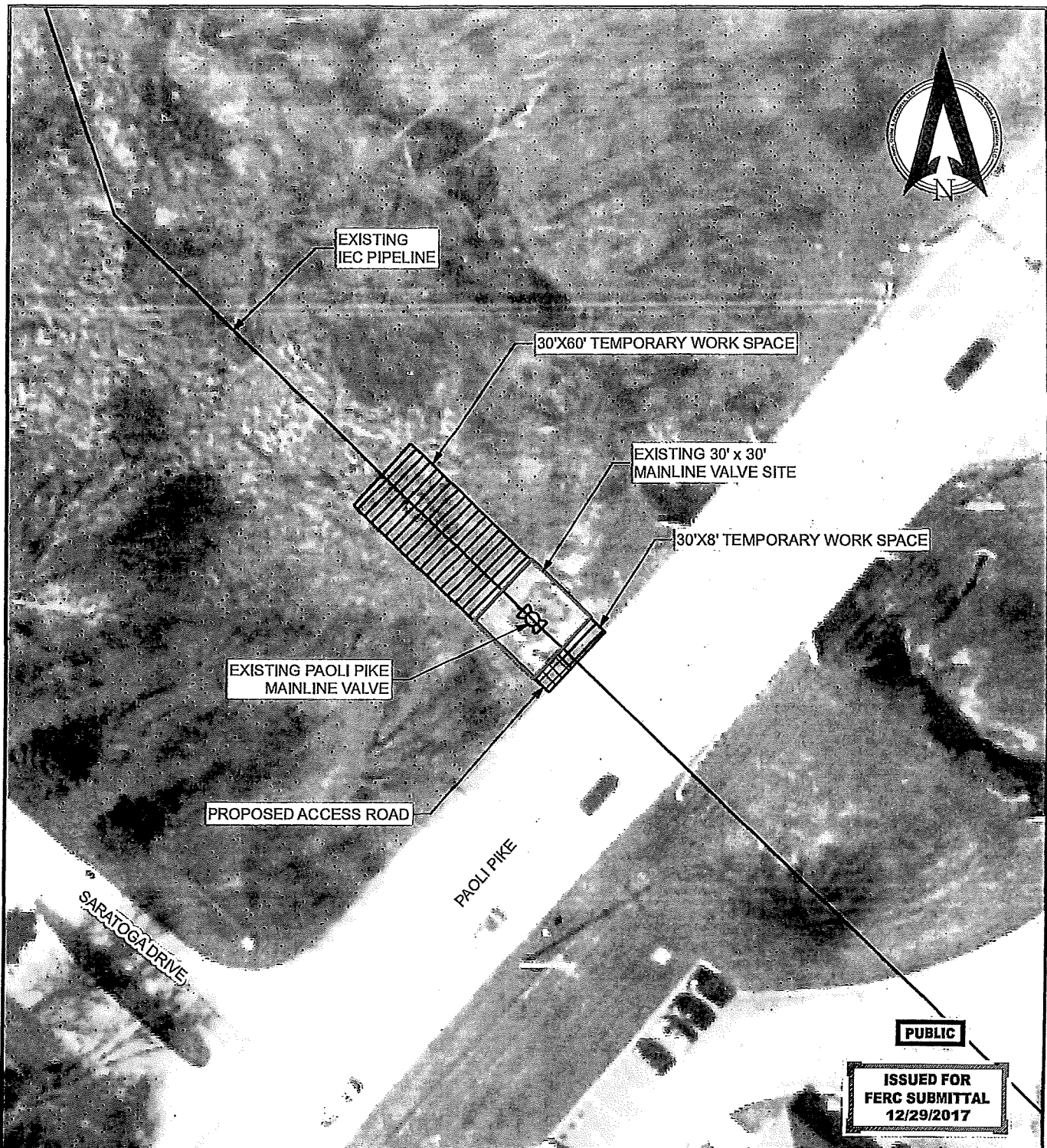
Prospect: _____ Deck #: _____

Approved by: _____ Date: _____

Date Paid: _____ Check #: _____

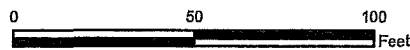
PIPE BOLLARD DETAIL





LEGEND

- EXISTING MAINLINE VALVE SITE
- TEMPORARY WORK SPACE
- PROPOSED ACCESS ROAD
- EXISTING PIPELINE



EXISTING MAINLINE VALVE SITE = 0.02 ACRES
 TEMPORARY WORK SPACE = 0.04 ACRES
 PROPOSED ACCESS ROAD = 0.01 ACRES



HURT, GUILLOT & ASSOCIATES, LLC
 ONE METROPOLIS DRIVE, SUITE 100
 BIRMINGHAM, AL 35205
 PHONE 205-970-4977
 FIRM # PA 4004148



ADELPHIA GATEWAY, LLC
AERIAL MAP
PAOLI PIKE BLOWDOWN M.P. 14.46
CHESTER COUNTY,
PENNSYLVANIA

SCALE 1" = 50' DRAWING NUMBER 8.A17022.01-AERIAL-MLV-M.R.14.46 REV 0

						DRAWN BY	MSF	12/15/17
						DESIGNED BY	PLH	12/15/17
						CHECKED BY	MEH	12/21/17
						APPROVED BY	RCH	12/21/17
						HGA JOB NO.	8.A17022.01.0	
						PLOT SCALE	1:1	
						MODEL ID	8.A17022	
0	ISSUED FOR FERC	MEH	12/29/2017	RCH	12/29/2017			
REV	DESCRIPTION	CHK	DATE	APP	DATE			

BOARD OF SUPERVISORS
EAST GOSHEN TOWNSHIP
CHESTER COUNTY
1580 PAOLI PIKE, WEST CHESTER, PA 19380-6199

April 11, 2018

Dear Property Owner:

The purpose of this letter is to inform you that at their meeting on Tuesday, April 17, 2018, at 7 PM, the Board of Supervisors will consider authorizing the Chairman to execute an amendment to an existing easement with Interstate Energy Company LLC.

The amended easement will allow Interstate Energy Company LLC to transport natural gas through an existing pipeline that runs through the Township Open Space in the Wentworth development located at Boot Road and Paoli Pike. There will be no change to the area of the easement.

The Township will receive consideration of \$5,000 for amending the easement.

The easement agreement will be included in the Board of Supervisors' meeting agenda packet for the April 17th meeting, which will be posted on the Township website: www.eastgoshen.org.

The meeting will be held at the Township Building and is open to the public.

If you have any questions, please call me at 610-692-7171 or e-mail me at rsmith@eastgoshen.org.

Sincerely,



Louis F. Smith, Jr.
Township Manager

West Chester Pike Coalition Organizational Structure

3/12/2018

Voting Members (15)

The 10 municipalities (West Chester Borough and West Goshen, East Goshen, Westtown, Willistown, Edmont, Newtown, Marple, Haverford, and Upper Darby Townships)

Chester County

Delaware County

Delaware Valley Regional Planning Commission

Transportation Management Association of Chester County

Delaware County Transportation Management Association

Non-Voting Members

PennDOT, SEPTA, Employers, Business Associations, Advocacy Groups, and anyone with an interest in the corridor

Officers

Chair, Vice-Chair, and Secretary. The Chair and Vice-Chair must be township or borough Coalition voting members, with one from each County

Officer Responsibilities

The Chair runs Coalition meetings.

The Vice-Chair runs meetings in the absence of the Chair.

The Secretary prepares agendas and minutes and arranges for meeting rooms; the Counties are willing to serve as Secretary.

Quorum for Meetings

Minimum of 3 municipalities from each County and both County members

Voting on Agenda Items

To approve an action, a minimum of 3 municipalities from each County and both County members must vote "Yes." In addition, a majority of voting members present must vote "Yes."

Types of Action Items to Be Considered

Procedural matters

Action Plan

Letters of support from Coalition for grant applicants

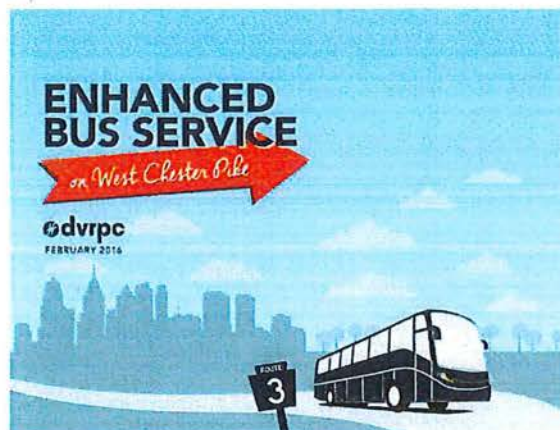
Other items that Coalition agrees to act on

West Chester Pike Coalition Background

West Chester Pike/Pennsylvania Route 3 is one of the region's most important transportation and economic corridors. Between West Chester Borough and the 69th Street Transportation Center, the corridor passes through ten communities in Chester and Delaware counties. The area within one-half mile of the corridor is home to over 90,000 people, 50,000 jobs, and several regionally significant destinations. Despite its importance, residents and visitors have few options beyond the automobile for traveling along the corridor.

In 2015, DVRPC partnered with numerous corridor stakeholders, including SEPTA, Chester County, and Delaware County, to produce *Enhanced Bus Service (EBS) on West Chester Pike*. This study built on the findings of several previous planning efforts by DVRPC and its planning partners to provide a blueprint for improving the quality of existing bus service on corridor. This blueprint consists of three interrelated elements:

- Faster end-to-end travel times enabled by consolidating service to a small number of strategically-located stations;
- Coordinated efforts to enhance the pedestrian environment around these stations; and
- Ongoing collaboration between corridor municipalities and other stakeholders designed to promote information sharing and persistent advocacy.



DVRPC's study, *Enhanced Bus Service on West Chester Pike*, recommended ongoing collaboration along the corridor.

The West Chester Pike Coalition is a group of corridor stakeholders that has emerged from recent planning efforts along West Chester Pike. Both Chester and Delaware county staff have taken an active role in organizing and leading this coalition, which includes representatives from SEPTA, PennDOT, TMACC, DCTMA, corridor municipalities, and local economic development agencies.

While the coalition was formed to continue to advocate for transit enhancements, its mission is deliberately broad so as to recognize the connections between transportation and land use and encourage the participation of a broad range of stakeholders united in their efforts to improve mobility for all along West Chester Pike.

The coalition first met in July 2016 and continues to meet on a quarterly basis. The *Action Plan* that follows was developed in the fall of 2017 to guide the work of the coalition in the coming years. The plan is organized into five key objectives that reflect the priorities of coalition members and identifies over 50 specific short- and long-term actions that stakeholders can pursue to improve the West Chester Pike corridor for all users.

For more information on the West Chester Pike Coalition, please contact: **Dan Whaland**, whalandd@co.delaware.pa.us

Objective I : Support SEPTA in efforts to establish enhanced bus service along West Chester Pike.

Lead	Action
Municipalities	<p>Adopt transit-supportive land use elements that allow for a mix of convenient non-car oriented elements.</p> <p>Endorse priority stop sites as desired locations for bus shelters and local pedestrian and bicycle improvements.</p>
Counties	<p>Coordinate with SEPTA for enhanced bus service on West Chester Pike.</p>
DVRPC	<p>Work with SEPTA to understand what factors make a successful enhanced bus service corridor, and communicate those factors to the Coalition.</p>
SEPTA	<p>Share Direct Bus shelter design options with municipalities to help municipalities establish preferred shelter designs in advance of any bus shelter enhancements or installations.</p> <p>Add a pilot for West Chester Pike enhanced bus service to the SEPTA annual service plan.</p>
PennDOT	<p>Identify and collaborate with corridor stakeholders on enhanced bus station design. Review preliminary plans for safety and traffic impact.</p>
Institutions	<p>Survey students and employees to help demonstrate demand for improved transit service.</p> <p>Encourage the use of public transit through campaigns or activities.</p> <p>Lobby SEPTA for transit improvements that would benefit members of corridor institutions.</p>
Businesses/ Business Associations	<p>Provide employees with financial incentives, such as RideECO, to take transit, and consider disincentivizing single occupancy vehicle commutes to work.</p> <p>Invest in the installation and maintenance of bus shelters.</p> <p>Lobby SEPTA for more frequent transit service that would benefit corridor employees.</p>

Objective 2: Advocate for safe pedestrian facilities along the corridor to major destinations, including bus stops.

Lead	Action
Municipalities	<p>Create new requirements or enforce existing ones for pedestrian facility and bus shelter construction where appropriate. Do not waive pedestrian amenity requirements along the transit corridor. Augment ordinances to enhance pedestrian movements where appropriate.</p> <p>Consider developing a local sidewalk fund consisting of contributions from developers who are granted variances to avoid constructing pedestrian amenities in other, less pedestrian-oriented locations.</p> <p>Create an official map for the corridor identifying local pedestrian improvements to provide counties with a list of potential projects along the corridor that are in line with the goals of the Coalition.</p>
Counties	<p>Provide the Coalition with GIS sidewalk data to identify crucial gaps in the sidewalk network surrounding major destinations.</p> <p>Assist municipalities in applying for grants to fund pedestrian improvements.</p> <p>Review municipal ordinances for pedestrian facility requirements and provide model ordinances to municipalities without sidewalk ordinances.</p>
DVRPC	<p>Work with TMAs to research, evaluate, and advocate for innovative financing techniques for sidewalk construction, including revisions to Act 209 that would allow municipalities to use funds for pedestrian facilities.</p> <p>Collect more detailed pedestrian facility data (curb ramps, crosswalks, pavement condition, etc.), and share it with the Coalition to identify additional opportunities for improvement near major destinations.</p>
SEPTA	<p>Provide support to local and county organizations to communicate why the transit agency values pedestrian facilities and needs them in order to expand and/or create a high-frequency route.</p>
PennDOT	<p>Evaluate the viability of improvements within the PennDOT ROW.</p>
Institutions	<p>Advocate for student and employee transportation needs. Share needs and advocacy activities with the Coalition.</p>
Businesses/Business Associations	<p>Provide pedestrian and transit passenger facilities, particularly through sponsorship opportunities.</p>

Objective 3: Coordinate with Coalition partners to identify and implement strategies for congestion mitigation.

Lead	Action
Municipalities	<p>Attend Coalition meetings regularly and inform the Coalition of relevant local development plans.</p> <p>Capitalize on land development proposals and funding opportunities to upgrade or install new signals.</p> <p>Inform county planning departments when development projects are completed.</p> <p>Work with counties, PennDOT, and DVRPC on a coordinated signal upgrade and maintenance plan.</p> <p>Consider transferring corridor management to PennDOT for signal management.</p>
Counties	<p>Record and maintain information on new developments to share with the Coalition through a shared web map.</p> <p>Develop a coordinated signal upgrade and maintenance plan.</p>
DVRPC	<p>Consider new work program projects to assess and/or model congestion mitigation strategies.</p> <p>Develop a coordinated signal upgrade and maintenance plan.</p>
SEPTA	<p>Inform the Coalition when corridor businesses or institutions request improved transit service from SEPTA.</p> <p>Provide guidance to municipalities and developers about how best to integrate transit service into new developments.</p>
PennDOT	<p>Consider taking over ownership and operation of traffic signals on West Chester Pike, including signal management with monies taken potentially from the Liquid Fuels budget.</p>
Institutions	<p>Advocate for congestion mitigation improvements, and participate in transportation planning and implementation projects that address congestion along the corridor.</p>
Businesses/ Business Associations	<p>Advocate for congestion mitigation improvements, and participate in transportation planning and implementation projects that address congestion along the corridor.</p>

Objective 4: Support efforts to enhance the appearance and identity of the corridor.

Lead	Action
Municipalities	Decide how/whether municipal identity should be portrayed along the corridor, especially through median landscaping after coordination with PennDOT, and develop design guidelines to ensure consistency with the municipal vision for low cost and low maintenance landscaping treatments.
Counties	Review options with each municipality for how/whether local identity should be portrayed. Aid in the development of design guidelines for median landscaping, corridor placemaking, and gateway treatments.
DVRPC	Research best practices in corridor placemaking and gateway treatments. Share best practices with the Coalition.
SEPTA	Accommodate local feedback concerning aesthetic components of enhanced bus station designs as fully as possible while maintaining a consistent brand for the service.
PennDOT	Conduct timely reviews of plans for placemaking and aesthetic enhancements within the PennDOT ROW. Create a uniform list of acceptable plantings for the median along the entire corridor.
Institutions	Provide financial support for corridor identity and appearance enhancements.
Businesses/ Business Associations	Provide financial support for corridor identity and appearance enhancements.

Objective 5: Ensure proper maintenance along the corridor.

Lead	Action
Municipalities	Reroute garbage collection to pick up trash at bus stops.
Counties	Help facilitate maintenance plan development.
DVRPC	Research best practices.
SEPTA	Ensure proper maintenance of route information and stop/station identification.
PennDOT	Present to the Coalition on how other corridors are able to sustain consistent corridorwide maintenance.
Institutions	Share maintenance activity opportunities, such as cleanups, with volunteer groups. Consider sponsoring cleanup events or similar activities.
Businesses/ Business Associations	Establish and contribute to a shared fund, similar to a business improvement district (BID), to fund aesthetic improvements as well as sidewalk construction and general corridor maintenance. Contact other BIDs, such as the West Chester BID, to help guide the development of a corridor BID or similar entity. Consider sponsoring cleanup events or similar activities.

Memo

East Goshen Township

Date: April 12, 2018

To: Board of Supervisors

From: Rick Smith, Township Manager

Re: Public Comment on the MS4 Plan

The PA Department of Environmental Protection (PADEP) has issued the Township a National Pollutant Discharge Elimination System Permit (NPDES Permit) that authorizes the Township to discharge stormwater water from our Municipal Separate Storm Sewer System (MS4) to the surface waters of the Commonwealth of Pennsylvania. The permit is issued pursuant to the Federal Clean Water Act of 1972 and is commonly referred to as an MS4 Permit.

One of the requirements of the MS4 Permit is that the Township develops and implements a MS4 Plan. A synopsis of each component of the MS4 Plan is as noted below. The complete MS4 Plan is attached.

The MS4 Permit has a number of requirements, one of which is that we annually solicit public comments on our MS4 Plan and that is the purpose of placing this item on the agenda.

Public Education & Outreach Program – The goal of this Program is to ensure that all target audiences are educated about the impacts of stormwater discharges on water bodies and the steps that the public can take to reduce pollutants in stormwater runoff. Target audiences include residents, business owners and managers, developers, school staff and administrators and municipal employees. The Township uses the services of the Chester-Ridley-Crum (CRC) Watershed Association and distributes educational materials provided by them to target audiences. In addition, the Township posts stormwater information on our website at <http://eastgoshen.org/services/public-works/stormwater>

Public Involvement & Participation Program - The goal of this Program is to ensure that the public has various opportunities to participate in stormwater related activities. The public includes residents, businesses, developers, schools, and municipal employees.

As noted above the Township uses the services the CRC and posts notices of various events throughout the year that provide an opportunity for public participation. In addition the Township also promotes events such as Keep East Goshen Beautiful Day, which is scheduled for Saturday April 21st and Conservancy Board tree planting events. Other activities include providing adequate public notice for all stormwater ordinances, providing an annual update on the MS4 program and encourage the reporting of illicit discharges by maintaining the *Who Are You Going to Call?* phone number list on the Township website at <http://eastgoshen.org/services/public-works/stormwater>.

Illicit Discharge Detection and Elimination Program – An Illicit Discharge is the discharge of a pollutant such as sewage to the sewage to a stream. Under this program the Township must inspect each outfall (i.e. discharge point) to the surface waters of the Commonwealth and if there is evidence of a pollutant being discharged, have the discharge eliminated.

Post Construction Stormwater Management Program – In November of 2013 the Board of Supervisors was required to adopt a new Stormwater Management Ordinance. The Ordinance is posted on our web site at <http://eastgoshen.org/services/permits-inspections/stormwater>

Pursuant to this ordinance, a property owner who adds impervious surface, such as a building addition, deck, shed, or expands their driveway is required to manage the stormwater runoff from the new impervious surface. The most typical form of stormwater management is stone filled trench within which the water is contained and allowed to perc back into the soil. Smaller projects can utilize the standard detail developed by the Township Engineer, while for larger projects a fully engineered plan is required. If the project results in 500 or more square feet of additional impervious coverage the property owner is required to enter into an agreement that spells out the operation and maintenance requirements.

The Ordinance also requires that the stormwater management facility be inspected on a regular basis, with the goal being to ensure that the facilities are operated and maintained in accordance with the approved plan. This is the “Post Construction Stormwater Management Program”. For small projects the property owner can do the inspection and provide the required certification to the Township. Larger projects must be inspected by the Township Engineer.

For some perspective, in 2017 we issued 64 storm water permits and 240 property owners were required to perform self-inspections.

Pollution Prevention and Good Housekeeping for Municipal Operation - The goal of this program is to prevent pollutant runoff from municipal facilities and activities from adversely impacting the environment. The following program should be adhered to by municipal employees involved with applicable facilities and activities in the Township. Some of the facilities covered by this program are the Township Building, the Public Works Annex and the Township Park. Some of the activities that are covered are street sweeping, snow removal and road maintenance.

Pending MS4 Changes – The PADEP has tested streams throughout the Commonwealth and identified those streams that are impaired and what the impairment is. In East Goshen, the Chester Creek, the Ridley Creek and Hunters Run (which is a tributary of Ridley Creek) are impaired because of sediment.

The Township submitted the application for a new MS4 Permit in September 2017. Since the above streams are impaired we were also required to submit a Pollution Reduction Plan that

outlines how we can reduce the sediment loading on the above stream by 10% within the next 5 year MS4 Permit cycle.

Fortunately, the plans for Milltown Dam Park and the Hershey Mill Dam Park will allow us to meet this requirement for the Chester and Ridley Creek.

F:\Data\Shared Data\Public Works Dept\MS4\Year 14 2016-2017\Memo to BOS 042717.docx

EAST GOSHEN TOWNSHIP

MS4 PLAN

Public Education and Outreach Program (MCM #1)

Public Involvement and Participation Program (MCM #2)

Illicit Discharge Detection and Elimination Program (MCM #3)

Post Construction Stormwater Management BMP Inspection
Program (MCM #5)

Pollution Prevention and Good Housekeeping Program for
Municipal Operations (MCM #6)

March 10, 2003

Revised March 10, 2004

Revised July 17, 2012

Revised February 10, 2014

Revised February 24, 2014

PUBLIC EDUCATION AND OUTREACH PROGRAM

The goal of the *Public Education and Outreach Program* for East Goshen Township is to ensure that all target audiences are educated about the impacts of stormwater discharges on water bodies and the steps that the public can take to reduce pollutants in stormwater runoff. Target audiences include residents, business owners and managers, developers, school staff and administrators and municipal employees.

The Township is a member of the Chester-Ridley-Crum (CRC) Watershed Association's Joint Municipal Outreach program. As a member of this CRC program, the Township receives various educational materials to distribute to appropriate target audiences. The Township should continue to utilize these CRC materials during each permit cycle to educate specific target audiences.

Several lists are maintained at the Township, including a newsletter recipients, commercial sewer customers, auto establishments, restaurants, and schools. Each list contains the name and address of each establishment. The Township should continue to update and maintain each list as necessary.

The Township anticipates utilizing the following implementation strategies for providing education and outreach to each target audience:

A. RESIDENTS

As of the 2010 census, East Goshen Township is home to approximately 18,026 residents in 7,500 households. Using materials provided by CRC (i.e. articles, advertisements, pamphlets, etc.), the Township anticipates utilizing the following methods of distribution to educate this target audience:

1. Township newsletter - distributed four (4) times per year and posted on Township website
2. Township website
3. Announce and/or distribute educational material at public meetings
4. Stormwater educational materials available at the Township Building via bulletin board and/or handouts/flyers.
5. New Township resident welcome packets
6. Including stormwater information with E&S permit applications

B. BUSINESSES

Approximately 114 businesses are established in East Goshen Township, ranging in size from a one person office to companies that employ several hundred people (i.e. QVC, CTDI, Synthes, etc.). Using materials provided by CRC (articles, advertisements, pamphlets, etc.), the Township anticipates utilizing the following methods of distribution may be utilized to educate this target audience:

1. Specific mailings
2. Township website
3. Township newsletter
4. Including stormwater information with E&S permit applications

C. DEVELOPERS

East Goshen Township is approximately 90% developed. However, some small subdivisions and infill development remain along with occasional redevelopment. As such, contractors and developers frequently obtain permits from the Township for residential and commercial construction projects. On average, there are 250 active building and/or zoning permits at any given time. Using materials provided by CRC and/or the Chester County Conservation District (i.e. articles, advertisements, pamphlets, etc.), the Township anticipates utilizing the following methods of distribution to educate this target audience:

1. Pre-construction meetings with the Chester County Conservation District
2. Including stormwater information with E&S permit applications
3. Township website

D. SCHOOLS:

East Goshen Township is part of the West Chester Area School District, which includes ten (10) elementary schools, three (3) middle schools, and three (3) high schools. East Goshen elementary school, SS. Peter and Paul parochial school, and Goshen Friends school are all located within the Township. Using materials provided by CRC (articles, advertisements, pamphlets, etc.), the Township anticipates utilizing the following methods of distribution to educate this target audience:

1. School newsletters
2. CRC outreach events
3. Specific mailings

E. MUNICIPAL EMPLOYEES

The Codes Department (5 employees) and the Public Works Department (12 employees) are the most involved in the stormwater management program in the Township. Using materials provided by CRC (i.e. articles, advertisements, pamphlets, etc.), the following methods of distribution may be utilized to educate this target audience:

1. Employee training events and/or staff meetings
2. Information available at Township building
3. Township newsletter

Additionally, Township staff and their consultants are required to evaluate the effectiveness of the *Public Education and Outreach Program*. Therefore, the following information is anticipated to be provided with the periodic DEP reports:

1. CRC materials and annual reports
2. Number of newsletters distributed
3. Stormwater complaints (including number, nature of complaint and resolution)
4. Page-view counter on stormwater management page of Township website

PUBLIC INVOLVEMENT AND PARTICIPATION PROGRAM

The goal of the Public Involvement and Participation Program for East Goshen Township is to ensure that the public has various opportunities to participate in stormwater related activities. Target audiences include residents, businesses, developers, schools, and municipal employees.

The Township is a member of the Chester-Ridley-Crum (CRC) Watershed Association's Joint Municipal Outreach program. As a member of this CRC program, the Township is notified of various events throughout the year that provide an opportunity for public participation. Past events have included stream clean-ups, guest speakers, workshops, meetings and tree plantings, and have been directed towards various target audiences. In some cases, East Goshen Township has sponsored a particular event. The Township should continue to utilize the public participation opportunities provided by CRC to encourage each target audience to become involved in stormwater related activities.

The following methods of encouraging public participation within the Township should be utilized:

- A. Prior to adoption of any ordinance required by the MS4 permit, provide adequate public notice and opportunity for public review, input and feedback.
- B. Provide an annual update regarding the Township's MS4 program at a public meeting.
- C. Encourage reporting of illicit discharges by maintaining the *Who Are You Going to Call?* phone number list and providing a citizen complaint form on the Township website.
- D. Adequately advertise CRC events to the target audience by appropriate means, which could include posting information at the Township building and on the Township LED signs, updating the website, an announcement at public meetings or through specific mailings. Sponsor events as Township resources permit.
- E. Ensure that MS4 periodic reports are available for review by the public at the Township building.
- F. Keep sufficient records for stormwater related events that involved participation from any of the target audiences. Documentation should include the name and date of the event, as well as the number of participants from East Goshen Township.

ILLICIT DISCHARGE DETECTION AND ELIMINATION PROGRAM

The following procedures are anticipated to be implemented to conduct East Goshen Township's *Illicit Discharge and Elimination Program*:

A. Identifying Priority Areas

In order to conduct a thorough *Illicit Discharge Detection and Elimination Program*, the Township should maintain the map that includes all outfalls and surface waters, as well as the entire storm sewer system including roads, inlets, piping, swales, catch basin, channels, basins and any other features of the Township's storm sewer system.

All regulated outfalls in the Township should be visually screened for dry weather flow one (1) time during the permit cycle. As the Township is located within the High Quality (HQ) portion of Ridley Creek, priority should be given to outfalls located in this watershed. Additional outfall screenings may be necessary based on the results of the first inspection, or if biological/chemical testing indicates pollutants are present.

B. Screening Outfalls

All outfalls that are the responsibility of the Township should be visually screened for dry weather flow one (1) time during the permit cycle. Should the visual inspection indicate that an illicit discharge may be occurring, the dry weather flow should be tested for appropriate biological and/or chemical parameters. Biological and chemical testing parameters may vary and should be appropriate for the suspected pollutant (i.e., testing for fecal coliform where a sanitary sewer cross connection is suspected). Common parameters for dry weather flow which may contain pollutants include, but are not limited to: pH, conductivity, E. Coli bacteria, fecal coliform bacteria, metals, suspended solids, dissolved solids, oils, ammonia, detergents, chlorine and fluoride. All outfall inspection information should be recorded on the *Outfall Reconnaissance Inventory/Sample Collection* form.

Additional outfall screenings may be necessary based on the results of the first inspection, or if biological/chemical testing indicates pollutants are present.

Laboratory analysis may be required for some biological and chemical testing parameters (i.e. fecal coliform). Inspectors should become familiar with laboratory requirements such as sampling technique, storage of the sample, and holding times prior to conducting outfall screenings.

If dry weather flow is not present, sampling and testing is not required.

Outfall screening records should be retained for inclusion in the Township's periodic MS4 report.

Personnel conducting the outfall screenings should carry proper Township identification at all times and wear appropriate personal protective equipment.

C. Identifying the Source of an Illicit Discharge when Contaminated Flow is Detected

Should an illicit discharge be confirmed during outfall screening and testing, the Township is required to determine the source of pollution. After determining the drainage area to the outfall, the following procedures may be utilized to track an illicit discharge to its source:

1. Storm Drain Investigation

Using the Township's storm sewer map, field crews begin at the outfall and follow the storm sewer upstream. Depending on the drainage area, multiple sections of the storm sewer system may need to be investigated. Manholes and/or inlets should be inspected while following the storm sewer for indicators of pollution. Biological and/or chemical sampling should be performed at reasonable locations upstream of the outfall to isolate the source of the illicit discharge.

2. On-Site Investigations

To pinpoint the exact source of an illicit discharge within the storm sewer network, additional testing may be necessary including dye testing, video testing, or smoke testing. The Township should select the appropriate testing method based on drainage area, frequency of the illicit discharge, location, and property accessibility.

3. Septic System Investigations

In areas of the Township where an illicit discharge is suspected to be sewage related and public sewer is not available, investigation of on-lot sewage disposal systems may be necessary. The homeowner(s) should be surveyed and a visual inspection of the property should be conducted to determine the condition of the on-lot sewage disposal system and its potential to be the source of an illicit discharge. Questions to ask during the homeowner survey include:

- a. How many people live in the house?
- b. What is the septic tank capacity?
- c. Do drains in the house run slowly or not at all?
- d. When was the system last inspected or maintained?
- e. Does sewage back up into the house through drain lines?
- f. Are there any wet areas of the yard or any odor?
- g. Is effluent piped to an absorption area or elsewhere?

During the visual inspection of the property, investigators should note if any of the following are present:

1. Foul odor indicative of sewage
2. Wet, spongy ground or lush plant growth

3. Algal blooms or excessive weed growth in adjacent ditches, ponds and streams
4. Shrubs or trees within 10 feet of the system with root damage
5. Location of vehicles or other heavy objects over the system's absorption area
6. Runoff that flows over the absorption area
7. Exposed system components
8. Visible liquid indicative of sewage on the surface of the absorption area
9. Obvious system bypasses (i.e. pipe discharges to stream)

For additional information regarding the tracking of illicit discharges, Township personnel should reference *Illicit Discharge Detection and Elimination- A Guidance Manual for Program Development and Technical Assessments* (Center for Watershed Protection & University of Alabama, October 2004).

D. Eliminating an Illicit Discharge

When the source of an illicit discharge is identified, the Township is required to eliminate the illicit discharge. If the source of the illicit discharge is the responsibility of the Township (i.e. a Township owned sanitary sewer pipe), appropriate repairs must be completed to eliminate the source of pollution. If the source of the illicit discharge is the responsibility of a property owner, the Township shall follow the procedures regarding notification and enforcement as set forth in §195 - *Stormwater Management* of the East Goshen Township Code.

E. Access to Private Property

In some instances it may be necessary to access private property during outfall screenings, tracking an illicit discharge, or when trying to eliminate a source of pollution. Every effort should be made prior to field work to notify the property owner that access will be required. If prior notification is not feasible, an attempt to notify the property owner should be made at the time of inspection. When Township personnel determine that an outfall is not accessible due to safety concerns or because the property owner could not be notified, a note should be made on the *Outfall Reconnaissance Inventory/ Sample Collection* form to be included with the MS4 periodic reports.

F. Reported Illicit Discharges

When an illicit discharge is reported to the Township, appropriate personnel should conduct a site visit to determine if an illicit discharge is present. If it is determined that an illicit discharge has occurred, the Township should identify the source per the procedures noted above. In all cases, whether an illicit discharge was confirmed or not, a field report should be completed that contains the date, location, and field observations and be included with the MS4 periodic report.

POST CONSTRUCTION STORMWATER MANAGEMENT BMP INSPECTION PROGRAM

The *Post Construction Stormwater Management BMP Inspection Program* for East Goshen Township has been developed to ensure adequate operation and maintenance of all post-construction stormwater management BMPs installed at all qualifying development or re-development projects, including those owned or operated by the Township.

- A. The inventory of all post-construction stormwater BMPs should be maintained. The inventory should include all BMPs installed to meet the requirements of an NPDES permit (sites 1 acre or greater) since March 10, 2003 and include the following information:
 - 1. The exact location of the BMP; BMP owner and/or responsible party
 - 2. Type of BMP and year constructed
 - 3. Maintenance required for the BMP type according to the PA BMP Manual or the site specific plan
 - 4. Actual inspection/maintenance activities for each BMP; and an assessment by the Township determining if proper operation and maintenance occurred.

To date, fifteen (15) qualifying BMPs have been constructed in the Township since March 10, 2003.
- B. Each BMP should be inspected one (1) time during the permit cycle.
- C. Property owners should be notified prior to conducting the inspection.
- D. The approved subdivision, land development, and/or site plan should be utilized during the site inspection to verify proper operation and maintenance of stormwater BMPs(s). As-built plans should be utilized during the inspection, if available.
- E. A field report should be completed for each BMP inspected. Reports should document:
 - 1. Visual observations regarding site conditions
 - 2. Weather
 - 3. Discrepancies between the plan details and the installed BMP
 - 4. Maintenance notes
 - 5. Photographs

- F. Should violations be noted, the property owner should be notified and given the opportunity to properly operate and/or maintain the BMP(s). For continual non-compliance penalties should be issued per the procedures set forth in §195 - *Stormwater Management* of the East Goshen Township Code.

POLLUTION PREVENTION AND GOOD HOUSEKEEPING PROGRAM FOR MUNICIPAL OPERATIONS

The goal of the *Pollution Prevention and Good Housekeeping Program for Municipal Operations* for East Goshen Township is to prevent pollutant runoff from municipal facilities and activities from adversely impacting the storm sewer system or the environment. The following program should be adhered to by municipal employees involved with applicable facilities and activities in the Township:

A. Facilities and Activities

The following facilities are owned or operated by East Goshen Township and have the potential for generating stormwater runoff:

1. Township Building, 1580 Paoli Pike, West Chester Pa 19380 - Parking Lot, Administration Building, and Public Works garage. Small trucks are parked at this garage.
2. Public Works Annex, 1570 Paoli Pike, West Chester, PA 19380 - Public works garage, salt bins, fuel tanks, vehicle maintenance. Large trucks and other equipment are parked in this garage.
3. East Goshen Township Park, 1661 Paoli Pike, West Chester, PA 19380 - Parking lot, ballfields, tennis courts, trail system, two (2) bathrooms, basketball courts, etc.
4. Applebrook Park, 1600 Paoli Pike, West Chester, PA 19380 - Parking lot and trail.
5. Ridley Creek Sewer Plant, 1751 Towne Drive, West Chester, PA 19380 - Tanks, buildings, parking area.
6. Westtown Way yard, Located on east side of Westtown Way across from Ridgewood Apartments - Storage yard containing pipe, inlets, manholes, stone, wood chips, millings, brick, wood, scrap metal bins, etc. There is no building at this location.

The following activities are performed by the Township and have the potential for impacting stormwater runoff:

1. Street Sweeping
2. Snow removal/deicing
3. Inlet/outfall cleaning
4. Lawn/grounds care
5. Storm sewer maintenance/repairs
6. Park and open space maintenance

7. Municipal building maintenance
8. New construction and land disturbances
9. Right of way maintenance
10. Vehicle operation, fueling, washing and maintenance
11. Leaf/yard debris pick up and disposal operations

The Township should maintain the above inventory of applicable facilities and activities, and update it as necessary.

B. Specific Procedures for Storm Sewer Operations and Maintenance

All components of the municipal storm sewer collection system are included in this program. These components include municipal roads, parking lots, or other paved areas; storm sewer inlets, piping and outfalls; swales, ditches or other storm water conveyances; detention/retention basins or other stormwater management structures.

1. Storm Water Facility Operation:

All municipal storm water facilities will be operated according to their design specifications and in a manner that prevents or reduces adverse environmental, public health and safety impacts.

2. Storm Water Facility Inspection:

- a. Inspections will be conducted to evaluate the performance of stormwater facilities and to determine the potential or actual amounts of pollutants, trash and debris entering and discharging from the stormwater collection system.
- b. Inspection frequencies will depend on various factors, but will be at least once per year. The type, size and design of the stormwater facility will be used to guide inspection frequencies. The size of the drainage area, the amount of impervious cover, and the type of activities that occur within the drainage area will affect inspection frequencies. More frequent inspections would be warranted in construction or high vehicle use areas, or in any area that is known or suspected to be at an increased risk for pollution. Severe weather conditions such as heavy rains will usually require follow up inspections to determine the impact to, and performance of, stormwater facilities.
- c. All inspection activities, results and recommendations will be documented in writing.
- d. The overall condition and cleanliness of Township roads and parking lots will be evaluated during routine travel by Public Works staff. Those areas with excessive staining, trash or sediment will be investigated or scheduled for cleaning. Appropriate corrective actions will be considered for any areas exhibiting flooding or poor drainage patterns.
- e. All storm sewer inlets/catch basins will be inspected at least annually to determine the sediment load and overall condition of the structure. If the depth of deposits is greater than or equal to one-third the depth from the basin bottom to the invert of the lowest pipe or opening into or out of the basin, cleaning will be scheduled. Catch basins that accumulate deposits quickly will be inspected more frequently

- and the drainage area will also be inspected to determine possible causes. Inlet grates will be inspected for trash or debris that may prevent stormwater from entering the storm sewer system, especially before heavy rains are forecast.
- f. Storm sewer easements and right-of-ways will be inspected at least annually to check for obstructions or any other conditions that might threaten the integrity of the system.
 - g. Storm sewer outfall structures will be inspected annually to check for structural integrity and erosion potential.
 - h. Township detention/retention basins will be inspected annually to check for sediment accumulation and overall basin conditions. Sediment exceeding 10% of the designed basin depth will trigger sediment removal to the original basin shape and depth. The basin will be inspected for the presence of yard waste or other non-degradable materials. The type and quantity of vegetation will be checked. Basin dikes, berms and spillways will be examined for structural integrity. The basin will be checked to determine if the trash rack is missing or plugged.
 - i. Other Township stormwater conveyances, such as swales, pipes, and ditches, will be inspected on a regular basis to check for trash, vegetation, sediment, and erosion conditions.
 - j. Any other type of Township stormwater BMP (i.e. wet pond, vegetated swale, infiltration facility, etc.) will be inspected annually according to guidelines contained within the *Pennsylvania Stormwater Best Management Practices Manual*.

3. Storm Water Facility Maintenance:

- a. Township roads and parking lots will be cleaned on a regular basis. Those areas identified by inspections as being more debris prone will be prioritized and cleaned more often. Roadway cleaning will occur after the winter deicing season is over in order to remove accumulated materials. Roadway cleaning may also occur under non-deicing conditions when oil spill clean up materials such as sand or oil dry are applied. This will prevent these oil contaminated materials from being washed into the storm sewer system.
- b. The storage and application of materials used for roadway deicing or traction control will be in a manner that reduces the impact to the storm sewer system and the environment. All storage will be protected from precipitation. Any spillage of materials will be cleaned up to prevent storm water runoff contamination. The application of any material to roads or parking lots, such as deicing compounds, will be only enough to accomplish the task and will take into consideration site specific characteristics such as road width and design, traffic concentration, and proximity to surface waters. The least hazardous materials will be used in environmentally sensitive or protected areas.
- c. Storm sewer inlets/catch basins will be cleaned when inspections reveal an excessive accumulation of sediment or debris. Storm sewer inlet grates will also be cleaned as necessary. Structural repairs to any part of the storm sewer inlet/catch basin will be performed as the need arises. Any storm sewer piping deficiencies will also be corrected. Excessive debris or sediment in any storm sewer piping will be removed. Damaged piping will be replaced.

- d. Free flow of water from outfalls will be maintained by removal of debris and obstructions. Velocity reducers at outfalls will be maintained or replaced as necessary.
- e. Detention basin sediment removal will occur when the basin is completely dry. Disturbed areas will be immediately stabilized and re-vegetated. Yard waste or non-degradable waste in a basin will be removed. Spillways and overflows will be maintained to allow for uninterrupted flow. Nuisance or exotic/invasive basin vegetation will be removed. Mowing and/or trimming of vegetation will occur as needed to sustain the basin and all detritus will be removed. Vegetative basin cover will be maintained at 95%. Areas of bare or sparse vegetation will be addressed by soil aerating, conditioning, seeding and mulching (as necessary) to restore a proper vegetative cover. Potential mosquito problems from unwanted standing water will be addressed by introduction of mosquito predators or by implementation of a pesticide plan.
- f. Any planned herbicide or pesticide application in a basin or any part of the storm sewer collection system will be reviewed by qualified persons in order to comply with all applicable regulations and to prevent adverse water quality impacts. The use of herbicides and pesticides will be limited as much as possible.
- g. Any other type of township storm water BMP (i.e. wet pond, vegetated swale, infiltration facility, etc.) will be maintained according to guidelines contained in the *Pennsylvania Stormwater Best Management Practices Manual*.
- h. Any materials recovered from any part of the storm sewer collection or treatment system will be handled and disposed of in accordance with all applicable state and federal disposal regulations.
- i. All maintenance activities will be documented in writing. Pictures will be taken of various storm sewer system components to document pre- and post-maintenance conditions.

C. Specific Procedures for Municipal Vehicles:

The Township owns approximately forty-three (43) vehicles. The following procedures should be followed when operating and maintaining municipal vehicles:

1. Municipal Vehicle Operation:

- a. All municipal vehicles will be operated in a manner that reduces the potential for pollution to the municipal storm sewer system and the environment. This includes obeying all road and traffic rules and being alert at all times.
- b. In the event of a vehicle pollution incident involving either vehicle fluids or cargo, all attempts will be made to prevent the spilled material(s) from entering the storm sewer system or nearby waterways. This could include diking, damming, absorbing, or removing the material from the affected area. All recovered material will be properly disposed of in accordance with all applicable state and federal waste disposal regulations. Appropriate spill containment and recovery equipment will be maintained at the Public Works facility. For any spill beyond the Township's ability to address, local contractors will be contacted to provide assistance. An up to date list of appropriate contractors will be maintained and readily available. A list of other entities to be contacted (i.e. PADEP, PA Fish & Boat Commission, water users/intakes, etc.) will be maintained and available.

2. Municipal Vehicle Maintenance:

- a. All vehicle maintenance will be performed indoors to reduce the potential for leaks or spills to impact the stormwater system.
- b. Products of maintenance activities, such as greasy rags, oil filters, air filters, batteries, degreasers, used oil and coolant, etc. will be placed in appropriately labeled containers for proper disposal or recycling. If these containers can not be stored under roof, they will be placed in secure areas with provisions to prevent releases to the environment.
- c. Areas containing spillage or contaminants will not be washed so that the runoff could enter the storm sewer system. Dry cleanup methods will be utilized as much as possible.
- d. Drip pans or containers will be used for all leaking vehicles. Outdoor vehicle storage areas will be periodically inspected to check for evidence of uncontrolled leakage.
- e. Suitable materials will be maintained on site for the cleanup and disposal of oils, chemicals, or other hazardous materials.
- f. Indoor floor drains will not be connected to any part of the storm sewer system and will not allow the discharge of pollutants to the environment.
- g. Non-hazardous cleaners and solvents will be used whenever possible.
- h. Vehicle storage and maintenance areas will be routinely inspected to determine the effectiveness of the pollution prevention program. Inspections records will be maintained and any deficiencies will be promptly addressed.

3. Municipal Vehicle Fueling:

- a. All vehicle fueling operations will be constantly monitored to prevent or react to spillage.
- b. All underground storage tanks will be operated and maintained according to all applicable local, state or federal requirements. This could include the use of overfill prevention equipment, corrosion protection equipment, and spill detection equipment.
- c. Aboveground storage tanks will be supplied with suitable secondary containment.
- d. "Topping off" of vehicle fuel tanks will be discouraged through training and signage.
- e. All spillage from fueling activities will be controlled and cleaned up immediately. Appropriate clean up materials such as oil dry or absorbent pads will be maintained at the fueling area and will be used to prevent spillage from entering the storm drain system. Water will not be used to clean up any spillage.

4. Municipal Vehicle/Equipment Washing:

- a. Municipal vehicles will be washed at commercial car washes whenever possible.
- b. If commercial car washes are not viable, designated washing areas will be established, preferably indoors where wash water can be recycled or directed to treatment.
- c. If outdoor washing occurs, it will be conducted so that the runoff will not enter the storm sewer system.
- d. Phosphate-free biodegradable detergents will be used whenever possible.
- e. If needed, vehicle/equipment wash water will be collected and discharged to the sanitary sewer system.
- f. The waste water generated from any power washing or steam cleaning activity will not be allowed to enter the storm sewer system.

F:\Data\Shared Data\Public Works Dept\MS4\Plan\East Goshen Twp MS4 Plan 022414.docx

Memo

East Goshen Township

Date: April 6, 2018

To: Board of Supervisors

From: Rick Smith, Township Manager

Re: Township Park Pedestrian Crossings

When Applebrook was originally approved the plans called for a traffic signal at the intersection of Hibberd Lane and Paoli Pike. The traffic generated by the office buildings would have satisfied the warrants for a traffic signal. However, with the conversion of the office buildings to the Preserve at Applebrook, the traffic volume generated by Applebrook reduced dramatically and the intersection no longer met the warrants for a signal.

The Township has a permit from PennDOT to operate and maintain Flashing Warning Device at this intersection. When the pedestrian pushes a button, the yellow lights begin to flash which alerts motorists, who are then supposed to stop (as required by state law) so that the pedestrian can cross Paoli Pike. However, most motorists are not aware of the requirement to stop for pedestrians.

Accordingly, people continue to call that Township to complain that the pedestrian crossings are unsafe.

I was recently copied on an e-mail that indicated PennDOT would conduct the required traffic study for a signal at this location if we submit an application for a traffic signal.

According, I would suggest that we do so and see what happens. As one of the former Supervisors once said: "No's don't cost anything".

PennDOT requires that a resolution be submitted with the application.

Suggested Motion - I move that we adopt a resolution authorizing the submission of an application for a traffic signal at Paoli Pike and Hibberd Lane.

RESOLUTION

BE IT RESOLVED, by authority of the Board of Supervisors
(Name of governing body)
of the Township of East Goshen , Chester County, and it
(Name of MUNICIPALITY)
is hereby resolved by authority of the same, that the Township Manager
(designate official title)
of said MUNICIPALITY is authorized and directed to submit the attached Application for Traffic
Signal Approval to the Pennsylvania Department of Transportation and to sign this Application on behalf of
the MUNICIPALITY.

ATTEST:

East Goshen Township

(Name of MUNICIPALITY)

(Signature and designation of official title) By: _____
(Signature and designation of official title)
I, Louis F. Smith, Jr. , Township Secretary
(Name) (Official Title)

of the Board of Supervisors of East Goshen Township , do hereby certify that the foregoing
(Name of governing body and MUNICIPALITY)
is a true and correct copy of the Resolution adopted at a regular meeting of the
Board of Supervisors , held the _____ day of _____ , 20 ____ .
(Name of governing body)

DATE: _____
(Signature and designation of official title)

Memorandum

East Goshen Township
1580 Paoli Pike
West Chester, PA 19380

Voice: 610-692-7171
Fax: 610-692-8950
E-mail: mgordon@eastgoshen.org

Date: 4/9/2018
To: Board of Supervisors
From: Mark Gordon, Township Zoning Officer *mlb*
Re: Paoli Pike Trail Maintenance Policy

Dear Board Members,

As you know, the trail easement discussions with property owners along the trail have begun. Therefore, it's appropriate to begin the discussion about the Township policy on the maintenance of the trail and the permanent trail easement areas.

The three easement types we are securing from property owners are: "Sidewalk Easement", "Traffic Signal Easement", and "Temporary Construction Easement". These easements are crafted specifically to PennDOT requirements and CANNOT be modified. Each property within the project area will require at least one of the above mentioned easements types. Each easement type is described below.

Sidewalk Easement - A permanent easement for the area where the trail will be located with a small area on either side of the actual trail. PennDOT requires that this easement be titled "Sidewalk Easement".

Traffic Signal Easement - Area needed to accommodate the traffic signal equipment, ADA ramps, provide access for maintenance, operation and future modifications of the signal equipment.

Temporary Construction Easement – An area needed to accommodate the construction of the trail, primarily for grading and will be returned to the pre-construction condition. This easement will expire at the completion of construction.

Since the easement language is strictly controlled by PennDOT, there will be a need to enter into "Side Agreements" with individual property owners to address specific details that cannot be included within the easement language. We anticipate each of these agreements to be unique for each property. The Solicitor is drafting an example "Side Agreement" at this time.

The trail is going to be used year round therefore the entire area of the sidewalk easement should be maintained year round. Also, property owners adjacent to the trail route have expressed a desire for the trail to be maintained year round.

Year round Maintenance within the Sidewalk Easement will include snow removal, ice treatment, grass cutting, tree trimming, refuse removal, etc. Grass cutting and trimming will also be done by the Township in areas between the sidewalk easement and the edge of the cartway, as needed.

If the Board agrees, staff will prepare a resolution for the Board to consider, which will outline the Paoli Pike Trail Maintenance Policy.

Memo

To: Board of Supervisors
From: Jon Altshul
Re: Consider snow plow replacement
Date: April 5, 2018

During the March 21-22 snow event, one of our 11-foot plows was severely damaged when it hit a curb in Rossmore. The impact ripped the height skids off the plow frame, as shown in the picture below, and bent the plow itself.

The insurance adjuster has determined that replacing the plow is cheaper than fixing it, and we received \$4,228 from the insurance company, which represents the cost of the plow minus depreciation (the damaged plow was a 2012 model and has a replacement value of about \$10,000).

Because spring is the best time to buy plows, Public Works would like to purchase a new plow now. Mark has received COSTARS pricing for a replacement 11' plow from Intercon for \$9,672. This purchase would have no budgetary impact, as the sum of the plow's depreciation and the insurance check equals the cost of the new plow.

Recommended motion: Mr. Chairman, I move that we purchase a new 11-foot Monroe plow from Intercon for \$9,672.



Steel plow frame ripped in 2 spots



Plow bent (hard to see clearly in a photograph)

**EAST GOSHEN TOWNSHIP
BOARD OF SUPERVISORS MEETING
1580 PAOLI PIKE
TUESDAY, APRIL 10, 2018
DRAFT MINUTES**

Present: Chairman Marty Shane; Vice-Chair Carmen Battavio; Members Janet Emanuel and Mike Lynch; Township Manager Rick Smith; Assistant Township Manager & Finance Director Jon Altshul; and Erich Meyer (Conservancy Board).

Call to Order & Pledge of Allegiance

Marty called the meeting to order at 7:00 p.m. and asked Jon to lead the pledge of allegiance.

Moment of Silence

Carmen called for a moment of silence to honor our troops and emergency responders.

Recording

None.

Chairman's Report

Marty made the following announcements:

- The Board met in Executive Session to discuss a real estate matter.
- The Chester County Planning Commission will be having a public meeting at Penn State Great Valley on Tuesday, 5/1 at 5:30pm on Landscapes 3.

Consider Recommendation for 2018 Sewer Rates

Jon provided an overview of the April 4, 2018 memo recommending that sewer rates be changed from \$27.26/quarter fixed and \$8.38 per thousand gallons variable to \$27.02/quarter fixed and \$8.74 per thousand gallons variable. He stated that the sewer fund ran a surplus last year and that staff is proposing that some of that surplus be returned to ratepayers in the form of "rate stabilization". He also added that overall water consumption increased by about 1.8% compared with a year ago. However, consumption by single family homes decreased from about 14.2 TG/quarter to 13.9 TG/quarter. At these rates, the average single family homeowner would pay \$148.37 per quarter, compared with \$146.26 currently.

Carmen made a motion to adopt Resolution 34A, the revised fee schedule, to amend the Township's sewer rates to \$27.02 per quarter fixed and \$8.74 per thousand gallons variable. Janet seconded.

Mike asked for clarification about how the rates are calculated and expressed concern about whether the rate increase would cover the cost of sewer operations. He observed that last night the Municipal Authority authorized the Township to out-

1 source repairs of the Tallmadge Drive sewer line at an expense of between \$70,000
2 and \$85,000, rather than doing the project in house at a lower cost. Jon
3 acknowledged this project as a new cost, but added that he expects savings in other
4 sewer fund line items, including the payment for Summit House and Cider Knoll's
5 sewer treatment to Westtown, improvements to the Barkway Pump Station and
6 interest income. The motion passed 4-0.

7
8 **Consider Recommendation for Paoli Pike/Goshenville Overlay Zoning**
9 **Proposal**

10 Carmen made a motion to accept the proposal for planning services from Thomas
11 Comitta Associates to assist the Township Planning Commission in the development
12 of an overlay zoning district for Goshenville as outlined in the TCA proposal dated
13 April 4, 2018, omitting items 2.1 and 4.1, for a cost not to exceed \$35,000. Janet
14 seconded the motion. The motion passed 4-0.

15
16 **Consider Recommendation to Replace Paver**

17 Jon explained that the new, larger paver would reduce the Township's costs for
18 equipment rental and would therefore pay for itself within a year. Carmen made a
19 motion to purchase a Weiler P385B Paver for \$135,547, net of a \$60,000 trade in.
20 Mike seconded. The motion passed 4-0.

21
22 **Public Comment**

23 Andrea Perakis, 1601 Paoli Pike, expressed support for the zoning overlay and
24 confirmed with the Board that her parcel would be covered by the study.

25
26 **Approval of Minutes of April 3, 2018**

27 Janet made a motion to approve the minutes of April 3, 2018 as corrected. Carmen
28 seconded. The motion passed 3-0.

29
30 **Treasurer's Report of April 5, 2018**

31 Carmen moved to graciously accept the Treasurer's Report and the Expenditure
32 Register Report as recommended by the Treasurer, to accept the receipts and to
33 authorize payment of the invoices just reviewed. Janet seconded. The motion
34 passed 4-0.

35
36 **Adjournment**

37 There being no further business, Janet motioned to adjourn the meeting at 7:35 pm.
38 Mike seconded the motion. The motion passed 4-0.

39
40 Respectfully submitted,
41 *Jon Altshul*
42 *Recording Secretary*

43
44 Attachments: April 5, 2018 Treasurer's Report
45

April 5, 2018

**TREASURER'S REPORT
2018 RECEIPTS AND BILLS**

GENERAL FUND

Real Estate Tax	\$96,360.48
Earned Income Tax	\$10,200.00
Local Service Tax	\$0.00
Transfer Tax	\$0.00
General Fund Interest Earned	\$4,323.87
Total Other Revenue	\$424,746.92
Total Receipts:	<u>\$535,631.27</u>

Accounts Payable	\$404,749.40
Electronic Pmts:	
Credit Card	\$0.00
Postage	\$0.00
Debt Service	\$31,131.00
Payroll	\$60,506.42
Total Expenditures:	<u>\$496,386.82</u>

STATE LIQUID FUELS FUND

Receipts	\$0.00
Interest Earned	\$0.37
Total State Liquid Fuels:	<u>\$0.37</u>

Expenditures:	<u>\$0.00</u>
---------------	---------------

SINKING FUND

Receipts	\$0.00
Interest Earned	\$1,867.17
Total Sinking Fund:	<u>\$1,867.17</u>

Accounts Payable	\$2,737.50
Credit Card	\$0.00
Total Expenditures:	<u>\$2,737.50</u>

TRANSPORTATION FUND

Receipts	\$0.00
Interest Earned	\$568.81
Total Sinking Fund:	<u>\$568.81</u>

Expenditures:	<u>\$0.00</u>
---------------	---------------

SEWER OPERATING FUND

Receipts	\$12,255.89
Interest Earned	\$463.94
Total Sewer:	<u>\$12,719.83</u>

Accounts Payable	\$14,349.99
Debt Service	\$40,019.38
Credit Card	\$0.00
Total Expenditures:	<u>\$54,369.37</u>

REFUSE FUND

Receipts	\$3,599.86
Interest Earned	\$382.31
Total Refuse:	<u>\$3,982.17</u>

Expenditures:	<u>\$5,158.15</u>
---------------	-------------------

BOND FUND

Receipts	\$0.00
Interest Earned	\$8,627.62
Total Sewer Sinking Fund:	<u>\$8,627.62</u>

Accounts Payable	\$9,080.29
Credit Card	\$0.00
Total Expenditures:	<u>\$9,080.29</u>

SEWER SINKING FUND

Receipts	\$0.00
Interest Earned	\$741.47
Total Sewer Sinking Fund:	<u>\$741.47</u>

Expenditures:	<u>\$15.00</u>
---------------	----------------

OPERATING RESERVE FUND

Receipts	\$0.00
Interest Earned	\$643.23
Total Operating Reserve Fund:	<u>\$643.23</u>

Expenditures:	<u>\$15.00</u>
---------------	----------------



**Commonwealth of Pennsylvania
Department of the Auditor General
Harrisburg, PA 17120-0018
Facebook: Pennsylvania Auditor General
Twitter: @PAAuditorGen**

**EUGENE A. DePASQUALE
AUDITOR GENERAL**

April 10, 2018

Mr. Jon Altshul
Chief Administrative Officer
East Goshen Township
1580 Paoli Pike
West Chester, PA 19380

Dear Mr. Altshul:

This will confirm our audits of the East Goshen Township Firemen's and Non-Uniformed Pension Plans for the period January 1, 2014 to December 31, 2017, and that an entrance conference has been scheduled for April 10, 2018 at your municipal building.

We will be conducting compliance audits of the Pension Plans pursuant to authority derived from Section 402(j) of Act 205 of 1984 and in accordance with *Government Auditing Standards* applicable to performance audits, issued by the Comptroller General of the United States.

The objectives of the audits will be to determine if the pension plans were administered in compliance with applicable state laws, regulations, contracts, administrative procedures, and local ordinances and policies.

In accordance with *Government Auditing Standards*, we will report findings of fraud, illegal acts, significant deficiencies in internal control, significant violations of provisions of contracts, and significant abuse. In planning and performing our audits, we will obtain an understanding of internal control significant to the audit objective. In addition, we will perform procedures to provide reasonable assurance of detecting instances of violations of legal and regulatory requirements or violations of provisions of contracts that are significant within the context of the audit objective.

Our audits will be limited to the areas related to our objective. We will not be auditing the plans' financial statements and, accordingly, we will not express an opinion or other form of assurance on them. Preparation of plan financial statements is the responsibility of plan management. This responsibility includes the maintenance of adequate records and related internal control policies and procedures, the selection and application of appropriate accounting principles, safeguarding of assets, and compliance with laws and regulations.

We understand that you will provide us with the financial records and related information required for our audits and that you are responsible for the accuracy and completeness of that information. We may request written representations from your attorneys as part of the audits. At the conclusion of our audits, we will request that plan management provide us with a letter that confirms certain representations made during the audits.

At the conclusion of our audits, you will be invited to attend an exit conference during which the results and conclusions of the audits will be discussed. A copy of the exit conference memorandum will be provided to you if you are unable to attend the meeting.

If there are any questions concerning these or other matters, please contact David Bettick, CPA, Audit Manager, or me at (717) 783-1236.

Please note that the Department of the Auditor General strives to maintain the highest level of independence and professionalism in its dealings with the entities we audit. Our auditors are prohibited from engaging in discriminatory practices against any entity that we audit. We are also committed to creating and maintaining a work environment for our auditors and audited entities that is free of harassment, including sexual harassment. These principles are embodied in the department's Equal Opportunity and Non-Discrimination Policy Statement, Code of Conduct, and Sexual Harassment Policy. Copies of these policies and complaint procedures are available by writing to the department's Office of Human Resources, 321 Finance Building, Harrisburg, Pennsylvania, 17120, or by calling (717) 787-3192.

Sincerely,

M. Furjanic

Auditor

Bureau of Municipal Pension & Liquor Control Audits
(717) 783-1236

Attachment

cc: The Honorable Eugene A. DePasquale
Mr. E. Martin Shane, Chairman, Board of Supervisors
Mr. Carmen Battavio, Vice-Chairman
Ms. Janet Emanuel, Supervisor
Mr. Michael Lynch, Supervisor
Mr. David Shuey, Supervisor
Mr. Louis Smith, Township Manager
Ms. Joanne Morgan, Township Secretary

April 12, 2018

**TREASURER'S REPORT
2018 RECEIPTS AND BILLS**

GENERAL FUND

Real Estate Tax	\$11,240.22
Earned Income Tax	\$54,737.20
Local Service Tax	\$9,811.50
Transfer Tax	\$0.00
General Fund Interest Earned	\$0.00
Total Other Revenue	\$25,007.46
Total Receipts:	\$100,796.38

Accounts Payable	\$56,749.66
Electronic Pmts:	
Credit Card	\$0.00
Postage	\$0.00
Debt Service	\$29,460.82
Payroll	\$60,808.63
Total Expenditures:	\$147,019.11

STATE LIQUID FUELS FUND

Receipts	\$0.00
Interest Earned	\$0.00
Total State Liquid Fuels:	\$0.00

Expenditures:	\$0.00
----------------------	---------------

SINKING FUND

Receipts	\$4,228.00
Interest Earned	\$0.00
Total Sinking Fund:	\$4,228.00

Accounts Payable	\$0.00
Credit Card	\$0.00
Total Expenditures:	\$0.00

TRANSPORTATION FUND

Receipts	\$0.00
Interest Earned	\$0.00
Total Sinking Fund:	\$0.00

Expenditures:	\$0.00
----------------------	---------------

SEWER OPERATING FUND

Receipts	\$5,979.77
Interest Earned	\$0.00
Total Sewer:	\$5,979.77

Accounts Payable	\$20,754.42
Debt Service	\$28,240.59
Credit Card	\$0.00
Total Expenditures:	\$48,995.01

REFUSE FUND

Receipts	\$1,837.72
Interest Earned	\$0.00
Total Refuse:	\$1,837.72

Expenditures:	\$939.99
----------------------	-----------------

BOND FUND

Receipts	\$0.00
Interest Earned	\$0.00
Total Sewer Sinking Fund:	\$0.00

Accounts Payable	\$256,359.06
Credit Card	\$0.00
Total Expenditures:	\$256,359.06

SEWER SINKING FUND

Receipts	\$0.00
Interest Earned	\$1,834.52
Total Sewer Sinking Fund:	\$1,834.52

Expenditures:	\$0.00
----------------------	---------------

OPERATING RESERVE FUND

Receipts	\$0.00
Interest Earned	\$0.00
Total Operating Reserve Fund:	\$0.00

Expenditures:	\$0.00
----------------------	---------------

EAST GOSHEN TOWNSHIP
MONTHLY DEBT PAYMENT BREAKDOWN
April 25, 2018

GENERAL FUND:

Interest payment	Principal payment	Year of Issuance	Loan Description	Original loan amount	Remaining Principal	Retirement Date
\$7,589.19	\$0	2003	Multi purpose 9 projects	\$5,500,000	\$2,113,000	2023
\$1,563.10	\$0	1999	Applebrook Park	\$3,000,000	\$462,000	2019
\$308.53	\$20,000	2000	Spray Irrigation	\$287,000	\$69,000	2021

SEWER FUND:

Interest payment	Principal payment		Loan Description	Original loan amount	Remaining Principal	Retirement Date
\$22,859.10	\$0	2008	RCSTP Expansion	\$9,500,000	\$6,927,000	2032
\$5,381.49	\$0	2013	Diversion Projects	\$2,500,000	\$2,118,000	2033

**EAST GOSHEN TOWNSHIP
MEMORANDUM**

TO: BOARD OF SUPERVISORS
FROM: BRIAN MCCOOL
SUBJECT: PROPOSED PAYMENTS OF BILLS
DATE: 04-12-2018

Please accept the attached Treasurer's Report and Expenditure Register Report for consideration by the Board of Supervisors. I recommend the Treasurer's Report and each register item be approved for payment.

The attached report includes receipts and expenses for one week.

General Fund expenses include \$20,000 for the 2018 principal payment for the spray irrigation loan and \$13,321 for the annual contribution to the Malvern Fire Company. This contribution was formally requested in a letter to Rick dated April 2, 2018.

All total, the Township and Municipal Authority received invoices from West Goshen Sewer Authority of \$328,647 for capital projects, primarily from costs associated with the Headworks and Emergency Generator replacements. The first \$72,288 of this amount was paid from the remaining proceeds of the Municipal Authority's 2013 notes, which are now fully drawn down. The balance of \$256,359 was paid out of the sewer portion of the Bond Fund.

Please advise if the Board decides to make any changes or if the reports are acceptable as drafted.

Report Date 04/13/18

Expenditures Register
GL-1804-62688

PAGE 1

MARP05 run by BARBARA

10 : 09 AM

Vendor	Req #	Budget#	Sub#	Description	Invoice Number	Req Date	Check Dte	Recpt Dte	Check#	Amount
01	GENERAL FUND									
3977	54685	1	01430	2330	CRAWFORD'S AUTO CENTER INC. VEHICLE MAINT AND REPAIR REPAIR FRNT DAMAGES 2011 FORD F-350	6288	04/13/18	04/13/18		2,172.35
										2,172.35
3941	54686	1	01487	1500	DISCOVERY BENEFITS INC. MISC. EMPLOYEE BENEFITS MARCH 2018 FSA	0000867678-IN	04/13/18	04/13/18		51.50
										51.50
218	54687	1	01452	3712	EVANGELISTA, CHARO YOGA EXPENSE WINTER SESSION HEALING CLASSES	7044	04/13/18	04/13/18		174.25
										174.25
3978	54688	1	01432	2500	FERRARO, LARRY SNOW - MAINTENANCE & REPAIRS REIMBURSEMENT FOR DAMAGED MAILBOX	032618	04/13/18	04/13/18		25.00
										25.00
719	54692	1	01437	2460	KEEN COMPRESSED GAS COMPANY GENERAL EXPENSE - SHOP VARIOUS GAS CYLINDERS	83176194	04/13/18	04/13/18		71.72
										71.72
3838	54693	1	01438	2460	KNIGHT BROS. INC. TREE REMOVAL TREE SERV. -COOPER CIRCLE & BRAMBLE LANE	12482	04/13/18	04/13/18		3,280.00
										3,280.00
3979	54694	1	01487	4600	LANCASTER PUBLIC SAFETY TRAINING CTR. TRAINING & SEMINARS-EMPLY TRENCH TRAINING 4/26 PW	040618	04/13/18	04/13/18		2,150.00
										2,150.00

PAGE 2

10 : 09 AM

[illegible]

Report Date 04/13/18

Expenditures Register
GL-1804-62688

PAGE 3

MARPO5 run by BARBARA

10 : 09 AM

Vendor	Req #	Budget#	Sub#	Description	Invoice Number	Req Date	Check Dte	Recpt Dte	Check#	Amount
1005				PENNSYLVANIA ONE CALL SYSTEM						
	54703	1	01438 3840	EQUIPMENT RENTAL	0000764120	04/13/18		04/13/18		59.17
				MONTHLY ACTIVITY - MARCH 2018						
										59.17
1087				PIPE XPRESS INC.						
	54704	1	01409 3745	PW BUILDING - MAINT REPAIRS	90389	04/13/18		04/13/18		4,881.03
				116 FT. DURA-SLOPE CHANNEL						
	54705	1	01438 2450	MATERIALS & SUPPLIES-HIGHWAYS	90418	04/13/18		04/13/18		630.00
				8X20'ADS PIPING - RESERVOIR & PAOLI						
	54706	1	01454 3740	EQUIPMENT MAINT. & REPAIR	90451	04/13/18		04/13/18		85.41
				CATCH BASIN, GRATE, PLUG & OUTLET						
										5,596.44
1300				SEI STEPHENSON EQUIPMENT INC.						
	54708	1	01438 3840	EQUIPMENT RENTAL	80028378	04/13/18		04/13/18		2,200.00
				MOWER RENTAL 4/2-4/8/18						
										2,200.00
1783				STATE WORKERS INSURANCE FUND						
	54707	1	01411 6000	VOLUNTEER FIREFIGHTER WORKERS COMP	033018	04/13/18		04/13/18		5,779.00
				POL.#05918452 INSTALLMENT 5 OF 11						
										5,779.00
1389				UNRUH TURNER BURKE FREES						
	54709	1	01414 3141	LEGAL - ZONING HEARING BOARD	153735	04/13/18		04/13/18		3,884.09
				LEGL SERV. 11/20/17-2/21/18 MALVERN						
				INSTITUTE						
										3,884.09
1470				WESTTOWN TOWNSHIP						
	54715	1	01438 2450	MATERIALS & SUPPLIES-HIGHWAYS	040218	04/13/18		04/13/18		1,899.00
				50% DTN WEATHER SERVICE 3/2/18 -						
				3/1/19						
	54716	1	01410 5310	REGIONAL POLICE BLDG INTEREST	043018	04/13/18		04/13/18		1,105.63
				APRIL 2018 - INTEREST						
	54716	2	01410 5320	REGIONAL POLICE BLDG PRINCIPAL	043018	04/13/18		04/13/18		9,583.33
				APRIL 2018 - PRINCIPAL						
										12,587.96

TO PREVENT FLOODING IN DC FROM MELTING SNOW OFF PW VEHICLES

PAGE 4

[illegible]

Report Date 04/13/18

Expenditures Register
GL-1804-62688

PAGE

5

MARPO5 run by BARBARA

10 : 09 AM

Vendor	Req #	Budget#	Sub#	Description	Invoice Number	Req Date	Check Dte	Recpt Dte	Check#	Amount
05				SEWER OPERATING						
583				HACH COMPANY						
54689	1	05422	3700	R.C. STP-MAINT.& REPAIRS TNT 2 PKS 25	10895976	04/13/18		04/13/18		107.18
54690	1	05422	3700	R.C. STP-MAINT.& REPAIRS DRIERITE DESICCANT, AMMONIA TNT, PHOSPHORUS TNT, DEIONIZED WATER, SULFURIC ACID, BUFFER SOLN & BOTTLE	10893260	04/13/18		04/13/18		1,311.04
54691	1	05422	3700	R.C. STP-MAINT.& REPAIRS PHOSPHORUS TNT	10894892	04/13/18		04/13/18		214.12
										1,632.34
1031				PECO - 99193-01204						
54700	1	05420	3602	C.C. COLLECTION -UTILITIES 99193-01204 3/1/18 - 3/30/18	040618	04/13/18		04/13/18		843.27
54700	2	05420	3600	C.C. METERS - UTILITIES 99193-01204 3/1/18 - 3/30/18	040618	04/13/18		04/13/18		9.04
54700	3	05422	3601	R.C. COLLEC.-UTILITIES 99193-01204 3/1/18 - 3/30/18	040618	04/13/18		04/13/18		384.72
54700	4	05422	3600	R.C STP -UTILITIES 99193-01204 3/1/18 - 3/30/18	040618	04/13/18		04/13/18		9,252.98
										10,490.01
1005				PENNSYLVANIA ONE CALL SYSTEM						
54703	2	05420	3701	C.C. INTERCEPT.-MAINT.&REP MONTHLY ACTIVITY - MARCH 2018	0000764120	04/13/18		04/13/18		59.17
54703	3	05420	3702	C.C. COLLEC.-MAINT.& REPR. MONTHLY ACTIVITY - MARCH 2018	0000764120	04/13/18		04/13/18		59.16
										118.33
1393				US POSTMASTER						
54710	1	05429	3250	ADMIN.- POSTAGE UTILITY BILLING QTR.2 - 2018	041318-S	04/13/18		04/13/18		940.00
										940.00
1431				WEST GOSHEN TOWNSHIP						
54712	1	05420	3850	C.C. WEST GOSHEN OPER/MAINT OPERATIONS & MAINT.- BAL. DUE 2017	040218	04/13/18		04/13/18		7,573.74
										7,573.74

ANNUAL
OPTE AT 126
TR06 JP

PAGE 6

Vendor	Req #	Budget#	Sub#	Description	Invoice Number	Req Date	Check Dte	Recpt Dte	Check#	Amount
06	REFUSE									
1393										
	54711	1	06427	3250 US POSTMASTER POSTAGE	041318-R	04/13/18		04/13/18		939.99
	UTILITY BILLING QTR.2 - 2018									
										939.99

Report Date 04/13/18

Expenditures Register
GL-1804-62688

PAGE 7

MARP05 run by BARBARA 10 : 09 AM

Vendor	Req #	Budget#	Sub#	Description	Invoice Number	Req Date	Check Dte	Recpt Dte	Check#	Amount
07				MUNICIPAL AUTHORITY						
3843				WEST GOSHEN SEWER AUTHORITY						
	54713	1	07429 6100	WEST GOSHEN CAPITAL	040218-1	04/13/18		04/13/18		72,288.38
				2017 SEWER SYSTEM REPAIR PROJECT						
				.16667 % EAST GOSHEN SHARE						

EXHAUSTS 2013 MA NOT JS

Report Date 04/13/18

Expenditures Register
GL-1804-62688

PAGE 8

MARP05 run by BARBARA 10 : 09 AM

Vendor	Req #	Budget#	Sub#	Description	Invoice Number	Req Date	Check Dte	Recpt Dte	Check#	Amount
08				BOND FUNDS (CAPITAL PROJECTS)						
					HEADWORKS, GENERATOR, P/S BYPASS					
3843				WEST GOSHEN SEWER AUTHORITY						
54713	2	08429	6000	WEST GOSHEN STP IMPROVEMENTS	040218-1	04/13/18		04/13/18		243,066.71
				2017 SEWER SYSTEM REPAIR PROJECT						
				.16667 % EAST GOSHEN SHARE						
54714	1	08429	6000	WEST GOSHEN STP IMPROVEMENTS	040218-2	04/13/18		04/13/18		13,292.35
				2017 SEWER SYSTEM PROJ. ENGINEERING,						
				TESTING & LEGAL-E.G. SHARE .16667%	ANNUAL ROUTINE CAPITAL					
										328,647.44
										407,091.51
										0 Printed, totaling 407,091.51

FUND SUMMARY

Fund	Bank Account	Amount	Description
01	01	56,749.66	GENERAL FUND
05	05	20,754.42	SEWER OPERATING
06	06	939.99	REFUSE
07	07	72,288.38	MUNICIPAL AUTHORITY
08	08	256,359.06	BOND FUNDS (CAPITAL PROJECTS)
		407,091.51	

PERIOD SUMMARY

Period	Amount
1804	407,091.51
	407,091.51