

# How to Set Up Your Recycling Program

## Recycling Is The Law!

The municipalities listed on the cover require businesses and institutions to set up recycling programs. This includes community events such as fairs and organized sports events.

Businesses and institutions must:

1. Recycle the following items:
  - aluminum cans
  - corrugated cardboard
  - high grade office paper
  - leaf waste
  - **other materials** as designated by the municipality
2. Call the municipality for reporting requirements. Several haulers report for their customers.

## Make A Commitment To Recycle

Get everyone involved, from top-level management to "rank and file" employees. The more people get the idea, the more likely the program will succeed. Endorsement from the highest level of management will motivate all employees to participate.

## Appoint A Recycling Coordinator

The coordinator handles inquiries and complaints, acts as a liaison between management, maintenance personnel and the recycling service provider and monitors the progress of the program.

## Conduct A Waste Audit

Assess the source, amount, and type of waste generated in your organization to determine what materials can or cannot be recycled, reduced or reused. Involve custodial staff because they are more familiar with waste produced and will need to change the way trash is managed.

## Set Up A Collection System

Contact your current hauler or call the Chester County Solid Waste Authority at 610-273-3771 ext. 228 to obtain a list of haulers. Calculate the number of recycling containers needed, their style, size, location and labels.

## Set Up An Educational Program

Provide clear instructions to everyone who will be involved with the recycling program describing:

- how to prepare materials
- where to place materials
- when collection occurs

Spread the word through the company newsletter, presentations explaining the new program, or a "kick-off" party. Routinely issue announcements stressing the benefits of recycling and the importance of each person's participation and responsibility in the program.

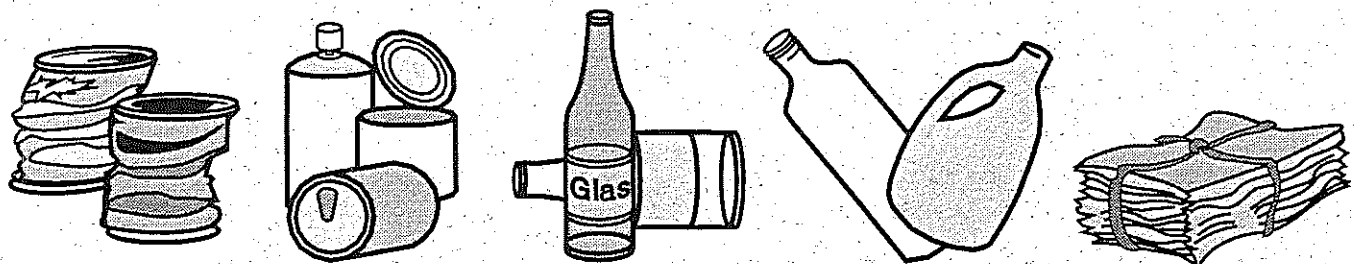
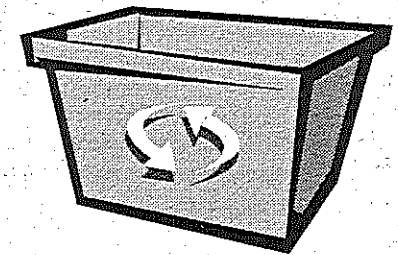
## Reevaluate Your Trash Pick-Up Service

You may be able to reduce the number of pickups or even the container size and reduce the cost of waste disposal.

## Buy Recycled Products

Insist on buying as many recycled products as possible to stimulate more recycling efforts. Recycling creates new products from old materials. Buying recycled products closes the recycling loop!! Most office supply stores in Chester County sell recycled products.

**PLEASE  
RECYCLE!**



For more information,  
Call the Chester County  
Solid Waste Authority

610-273-3771 ext. 228

[www.chestercountyswa.org](http://www.chestercountyswa.org)



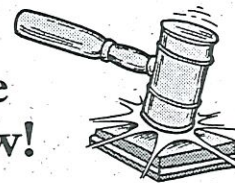
**DISCLAIMER:** This brochure is provided  
as a public service by the  
Chester County Solid Waste Authority  
7224 Division Highway  
Narvon, PA 17555  
610-273-3771  
[www.chestercountyswa.org](http://www.chestercountyswa.org)



*Printed on Recycled Paper  
Printed by the General Services Department*

Chester County Solid Waste Authority  
7224 Division Highway  
Narvon, PA 17555

Required  
To Recycle  
It's The Law!



Caln Township  
Charlestown Township  
Coatesville City  
Downingtown Borough  
East Bradford Township  
East Brandywine Township  
East Fallowfield Township  
East Goshen Township  
East Marlboro Township  
East Pikeland Township  
East Vincent Township  
East Whiteland Township  
Easttown Township  
Elverson Borough  
Kennett Township  
Kennett Square Borough  
London Grove Township  
Malvern Borough  
Modena Borough  
New Garden Township  
North Coventry Township  
Oxford Township  
Parkesburg Borough  
Phoenixville Borough  
Schuylkill Township  
Tredyffrin Township  
Upper Uwchlan Township  
Uwchlan Township  
Valley Township  
West Bradford Township  
West Brandywine Township  
West Caln Township  
West Chester Borough  
West Goshen Township  
West Grove Borough  
West Whiteland Township  
Westtown Township  
West Vincent Township  
Willistown Township