

**EAST GOSHEN MUNICIPAL AUTHORITY**

**May 10, 2021**

**7:00 PM**

1. CALL TO ORDER/PLEDGE OF ALLEGIANCE/MOMENT OF SILENCE

- a. Ask if anyone will be taping the meeting

2. CHAIRMAN'S REPORT/OTHER MEMBERS REPORTS

3. SEWER REPORTS

- a. Director of Public Works Report.  
b. Pennoni Engineer's Report.  
c. Big Fish Environmental Report

4. APPROVAL OF MINUTES

- a. April 12, 2021

5. APPROVAL OF INVOICES

Pennoni Invoice #1068854	\$	3,975.00
Pennoni Invoice #1068855	\$	1,198.00
Pennoni Invoice #1068856	\$	97.00
Pennoni Invoice #1068857	\$	1,846.25
Pennoni Invoice #1068858	\$	12,338.20
Mallie Invoice #1000110436	\$	7,475.00 Pd 4/29
Colonial Elect. #13910722	\$	401.60 Pd 4/26
Colonial Elect. #13689859	\$	91.96 Credit 4/26
Xylem #401064279- Have to pay N.J. Sales tax as per Auditor	\$	90.26 Pd 4/26
Xylem #401061802-2 - Have to pay N.J. Sales tax as per Auditor	\$	382.02 Pd 4/26
Xylem #401064280- Have to pay N.J. Sales tax as per Auditor	\$	144.74 Pd 4/26

6. LIAISON REPORTS

7. FINANCIAL REPORTS – (David Ware) Finance Director

- a. April Financial Report

8. OLD BUSINESS

- a. West Goshen Sewer Authority would like to order equipment for WWPS to avoid 40% increase on July 1, 2021
- b. Update on progress of HME Line replacement
- c. Authorize Chairman to sign Reimbursement Expenditures Resolution for Hershey Mill Estates truck line Replacement and the Westtown Way P/S West Goshen
- d. Authorize Chairman to sign agreement with Robert and Amanda Gionfriddo

9. 2021 Goals:

Goal	Status
Ridley Creek Plant Compliance	January, February, March were all in compliance and met all requirements
Continue to Monitor Upgrades at WGSTP and Westtown Way Pump Station	On – going discussions with West Goshen. West Goshen is going to continue to pursue additional grant funding. West Goshen Municipal Authority would like to pre purchase equipment. For the WWPS to avoid a <b>40%</b> increase before 7-1-21
Continue to Implement Infiltration and Inflow for the Sewer System	Total televised and cleaned: TV – 25,884 Cleaned – 19,488 Total to date 45,372 LF, multiple INI repairs have been made on both systems 100,000 gallons eliminated
Caustic Soda Project Mike Ellis is currently working on the Project	\$152,890 DCED grant awarded. Mark and Mike have met to discuss construction designing plans.
Replace sewer line Hershey Mill Estates trunk line replacement	Engineer actively designing plans, bog turtle study, wetland designation.
Hunt Country Pump Station Mag Meter Replacement	2021 – \$15,000.00 – on Hold - possibly apply for grant funding
Hunt Country Pump Station Muffin Monster Replacement	2021 – \$67,000.00 – on Hold – possibly apply for grant funding
Hunt Country Pump Station Bypass Pump	2021 - \$5,000 on hold – possibly apply for grant
Three New meters for Ridley Creek Collection system	PECO on Hibberd Lane, power has been completed, now waiting for John Laidley to install. R.C. plant (2022) N. Chester Road ( 2023)

10. NEW BUSINESS

a. Industrial Pretreatment Ordinance

11. CAPACITY REQUESTS

12. ANY OTHER MATTER

13. CORRESPONDENCE AND REPORTS OF INTEREST

14. PUBLIC COMMENT

15. ADJOURNMENT

EAST GOSHEN MUNICIPAL AUTHORITY  
EAST GOSHEN TOWNSHIP  
1560 PAOLI PIKE, WEST CHESTER, PA 19380-6199

April 9, 2021

To: Municipal Authority  
From: Mark Miller  
Re: March 2021 Monthly Report

**Monthly Flows:** The average daily flow to West Goshen was 780,000 per day.

**Meters:** The meters were read on a daily basis. The meters were calibrated by Allied Control. The portable meters were read once a week and they were calibrated as well. They will be pulled at the end of the month.

**C.C. Collection:** We cleaned and televised 18,552 feet of pipe. We were able to locate several significant problems with piping and manholes. The Public Works team will take care of broken mains and laterals. We hired USG to repair the manhole on Heather Lane.

On March 23, we excavated the sewer main on Linden Lane at the interceptor connection. We found the main was broken as a result of televising. After excavating we found a strange Fernco connection at the main that had dropped approximately 4 inches. We removed 20 feet of AC pipe and replaced it with a stick of schedule 40 pipe directly into the main. We used no shrinking grout and a stainless steel pipe clamp to make the connection back to AC pipe. We backfilled the trench with modify and compacted in one foot lifts. We then went back the following day and televised the repair and found no INI. (Pictures show the pipe before the repair)

We also found heavy INI at Dutts Mill Towne Homes on a 4 inch lateral that ties into our interceptor. The INI was very heavy with approximately 10 to 15 thousand gallons a day. We excavated for a broken lateral and dug down about 11 foot to locate the lateral line which was poorly installed. We ended up replacing 20 feet of pipe with schedule 40 .

We replaced several fittings and a clean out. We also raised two manholes up to grade and installed water tight/bolt down manhole castings and lids.

Heather Lane we will be installing liners in two manholes.

Ashbridge Forcemain (map included at the end of the report)

### **R.C. Collection:**

We plugged the trunk line and two manholes up from the screen room and had Pipe Data View come and jet. We were able to remove a ton of debris that has built up over time. A vac truck was on site to vacuum the channels in the stern room. We completed the repairs to 80 laterals in the Apple Brook Towne homes on Hibberd Lane. We removed all the old lateral caps for each home and placed Buffalo boxes on each stack and vent caps. I would estimate that we reduced approximately 16,000 to 18,000 gallons of INI. We also placed each lateral and vent on GPS when we were done. ( Map attached at the end of the report) . The plumber put a gopher through the lateral at the Old Mill House at Greenhill and Hershey Mill Road and then installed a new lateral.

We repaired a broken lateral on at 1622 Bowtree, we had so much infiltration that the water has started coming up in the street. We will install a French drain to get the water to the stream.

Manhole repairs at the following manholes:

2 at Bowtree Drive

### **Ridley Creek Plant:**

On March 26, 2021 we lost power at the plant due to the high winds. It caused a limb to strike a high power line then caused a fuse to blow. PECO was notified of the problem. I received a call from the dispatcher stating that this was taken care of on Saturday. After a lengthy discussion he agreed to send a crew out to check the fuse. At noon time on Sunday we were back on street power.

### **Alarms:**

We responded to 27 alarms for March.

### **PA One Calls:**

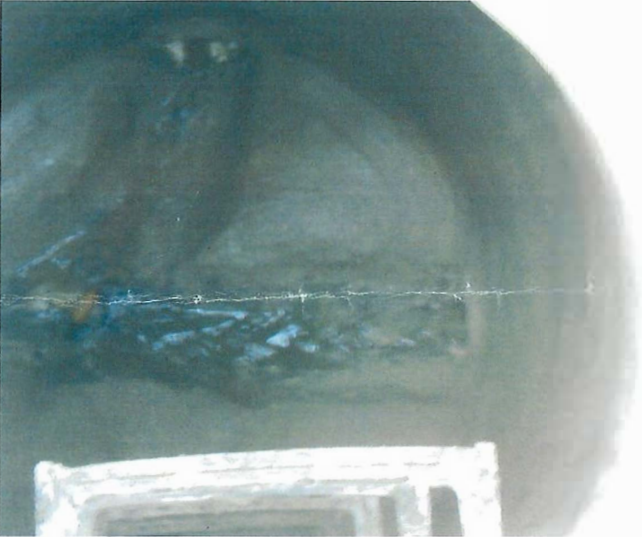
We responded to over 300 PA One Calls for the month of March.

### **Monthly Rainfall:**

3.55 inches for the month of March.

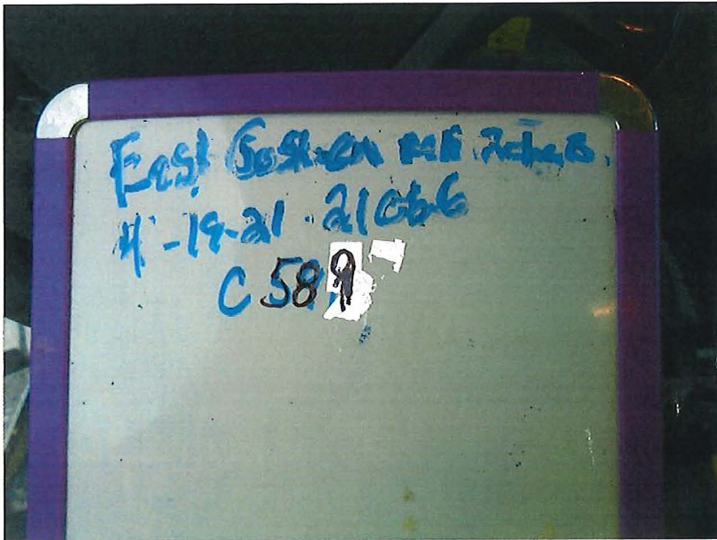
### **Lateral Caps:**

We replaced 2 lateral caps in Supplee Valley.




Manhole 591  
Heather Lann





Manhole  
C 589 Heather Lane





Wet Well  
Cleaning May 6



**EAST GOSHEN MUNICIPAL AUTHORITY  
ENGINEER'S REPORT  
May 5, 2021**

**Ridley Creek Sewage Treatment Plant (RCSTP)**

- Caustic Soda Conversion – The structural design for the tank's concrete slab has been completed, and details have been added to the plans. Updated plans are expected to be submitted to the Township for review the week of May 10.
- SBR #1 Inspection – We performed a visual condition assessment of the tank on May 5 while it is drained:
  - Piping, particularly flanges, is corroding as expected and needs to be cleaned and re-coated, as was done on the last tank.
  - CIM coating conditions are similar to those observed in other tanks. We will contact Dutchland for isolated repair of bubbles.
  - There was a thin surficial layer of apparent cement that was easily scraped off the interior surface of the two perimeter walls of this tank, neither of which is CIM coated. This is being further evaluated by our structural engineers, but it is not anticipated to be an urgent concern. It will be addressed accordingly in a forthcoming inspection report. Our initial reaction is that coating of these walls should still be pursued to minimize the risk of more aggressive deterioration and maximize the life of the tanks.
  - Lastly, there was some minor, isolated concrete spalling at the top of the walls, which is consistent with other tanks, and can be repaired accordingly.

**Ridley Creek Collection System Permanent Meters**

- No activity since our last report. Updated vendor quotes were previously obtained for a new RCSTP influent meter and manhole.

**Westtown Way Pump Station**

- We are still awaiting updated design plans, cost estimates, and pump station flow meter data from HRG in follow-up to the March 24 coordination meeting between East Goshen and West Goshen. We are meeting virtually with HRG on May 6 to obtain status updates and schedule for provision of requested documentation.

We are monitoring grant opportunities for the project, specifically the PA H2O Program and PA DCED Small Water & Sewer Program; however, no timeline has been issued as to if/when these programs will open for applications.

**Sanitary Sewer Pipe Rehab**

- Supplee Valley – No activity since our last report.
- Hershey's Mill Estates –
  - The wetland delineation and bog turtle habitat investigation reports are being completed. We anticipate the wetland report will be submitted to the Township the week of May 10 with the bog turtle report to follow. The reports will then be submitted to U.S. Fish and Wildlife Service

(USFWS) for their review and comment. Since there is potential habitat in proximity to the work area, the bog turtle report will likely propose avoidance measures in an effort to avoid a Phase 2 bog turtle study, but USFWS could dictate additional requirements. Anticipated time-of-year construction requirements are that work may be limited to October 1 through March 31. Winter work could be beneficial for construction access if the ground is frozen. We anticipate the USFWS review will take 30-60 days.

- Upon receipt of USFWS concurrence, we will submit the Waterways permit application. The extent of wetlands impacts will dictate if the permitting will be a PADEP General Permit or a USACE Individual Permit, which is still being determined. This permitting typically takes 90-120 days for review.
- The aforementioned permitting is expected to take 4-6 months. A 6-month duration would result in bidding in November-December with award in or around January, leaving two months for construction if the time-of-year restrictions apply. We project two months to be an aggressive duration for this work. We will keep a close eye on schedule throughout the process and may need to bid the project in advance of permit issuance.
- We also performed a visual condition assessment of the existing manholes. All but one manhole were found to be in good condition for re-use; the one manhole in poor condition was already planned to be replaced in order to shift the sewer away from the creek.
- 30% preliminary plans were submitted on April 12. Design is continuing and an updated plan submission is anticipated on May 7. A field meeting will then be conducted with Public Works to review the plans and evaluate the construction access route(s), staging and storage areas, and other constructability considerations.
- Lastly, we initiated preparation of the bid document and specifications.

#### **Chapter 94 Reports**

- We revisited flows in 2020 at the Hicks permanent meter in the Chester Creek collection system in follow-up to an inquiry at the April MA meeting that the peak daily flow at the meter was 0.720 MGD vs. an estimated pipe capacity of 0.750 MGD. Note that this is a peak daily flow, not instantaneous. There was no precipitation the day of or before this peak meter reading so we question if the reading was accurate. The next highest daily reading for the year was only 0.462 MGD. We will continue to monitor flows at this meter location.

#### **I&I Program**

- No activity since our last report.

#### **New Connections**

- No activity since our last report.

#### **Industrial Pretreatment Ordinance**

- We prepared a draft resolution to set additional contaminant levels that trigger the industrial wastewater provisions and an industrial pretreatment application questionnaire. The documents are expected to be submitted on May 6.

END OF REPORT



**Executive Summary<sup>1</sup>**

The Ridley Creek sewage treatment plant outfall 001 achieved compliance with the permit discharge limitations for the month of March 2021. All supplemental reports were submitted with the DMR. Discharge to the Applebrook irrigation lagoon remained on line. Chemical usage utilized for pH and total alkalinity remained consistent with previous months. No significant mechanical or operational issues were observed during operation of sludge dewatering equipment or SBR treatment process. There were no reported odor complaints during the month.

**Treatment Process Operation**

Table 1 illustrates the final effluent composite sample data reported for outfall 001 for the March 2021 DMR.

**Table 1**

<b>March 2021- Final Effluent - Outfall 001</b>											
NPDES Permit Discharge Limitations	Flow	CBOD <sub>5</sub>		TSS		NH <sub>4</sub> -N		Phosphorus, Total		Fecal Coliform	
	MGD	mg/L	lbs/ month	mg/L	lbs/ month	mg/L	lbs/ month	mg/L	lbs/ month	Geo Mean	Geo Mean
	Average	20	125	10	131	2.5	44	0.5	3	200	1,000
	0.75	40		15							
Sample Date											
March 2, 2021	0.546	4.3	19.6	7	31.9	1.010	4.60	0.18	0.82	3	0.4771
March 9, 2021	0.354	2.3	6.8	5	14.8	0.714	2.11	0.13	0.38	2	0.3010
March 16, 2021	0.441	3.5	12.9	7	25.7	0.312	1.15	0.13	0.48	1	0.0000
March 23, 2021	0.362	3.8	11.5	8	24.2	0.193	0.58	0.12	0.36	1	0.0000
March 30, 2021	0.351	3.0	8.8	5	14.6	0.545	1.60	0.10	0.29	1	0.0000
Average	0.411	3.4	11.9	6	22.2	0.555	2.01	0.13	0.47	2	0.1556
Minimum	0.351	2.3	6.8	5	14.6	0.193	0.58	0.10	0.29	1	0.0000
Maximum	0.546	4.3	19.6	8	31.9	1.010	4.60	0.18	0.82	3	0.4771

Compliance with the NPDES discharge permit was achieved. The monthly average total phosphorus was reported as 0.13 mg/L as compared to the permit limitation of 0.5 mg/L. The TSS samples were consistently in single digits and well below the weekly maximum of 15 mg/L.



The monthly average TSS was reported as 6 mg/L as compared to the discharge limitation of 10 mg/L. The TSS weekly averages are presented below in Table 2.

**Table 2**

<b>March 2021 Final Effluent Weekly TSS Averages</b>	
Week 1	7 mg/L
Week 2	5 mg/L
Week 3	7 mg/L
Week 4	8 mg/L
Week 5	5 mg/L

The final effluent test results demonstrate that the biological treatment process performed well during March and April. Sequencing batch reactors (SBRs) numbered 2, 3 and 4 were in service. Process monitoring of each SBR included ammonia as N, nitrite as N, Nitrate as N, COD, SSV, MLSS and total phosphorus. Daily analysis of the final effluent flow equalization grab sample for total phosphorus is ongoing. Sample collection and analysis of the influent wastewater collected at the influent pump station wet well is ongoing.

Discharge to the Applebrook irrigation lagoon, outfall 002, continues to remain off line during April.

The influent wastewater pollutant concentrations and loading entering the wastewater treatment facility generally remained within the design concentration and organic loading values. The monthly average weekly concentrations were generally observed to be less than the design parameters for the treatment process.

Table 3 presents the available pollutant data for the influent wastewater collected at the doghouse manhole during March 2021.

**Table 3**

<b>March 2021 - Influent Wastewater</b>											
Design Basis	Flow	BOD <sub>5</sub>		TSS		NH <sub>4</sub> -N		TKN, mg/L		Phosphorus, Total, mg/L	
	MGD	mg/L	lbs/day	mg/L	lbs/day	mg/L	lbs/day	mg/L	lbs/day	mg/L	lbs/day
	Average	335	2,098	320	2,001	32	200	48	301	9.1	57
<b>Sample Date</b>											
March 2, 2021	0.621	178	922	316	1,637	17.9	93	24.9	129	3.6	18.6
March 9, 2021	0.481	223	895	215	863	26.7	107	30.0	120	4.8	19.3
March 16, 2021	0.506	249	1,051	305	1,287	32.5	137	33.0	139	4.4	18.6
March 23, 2021	0.509	271.0	1,150	255	1,082	28.6	121	33.4	142	5.2	22.1
March 30, 2021	0.538	339.0	1,522	250	1,123	24.6	110	24.2	109	3.6	16.2
<b>Average</b>	0.5311	252	1,108	268	1,198	26	114	29.1	128	4.3	18.9
<b>Minimum</b>	0.4811	178	895	215	863	18	93	24.2	109	3.6	16.2
<b>Maximum</b>	0.6210	339	1,522	316	1,637	33	137	33.4	142	5.2	22.1

The foam on the SBR surface reduced to approximately 5% to 20% coverage of the surface area. The foam thickness is approximately 3 to 4 inches with a light to medium brown color. These conditions may contribute to a decrease in clarity within the final effluent post flow equalization basins; however, the clarity is improved after passing through the disc filters. The operation

strategy is to lower the MLSS to maintain a F:M ratio of 0.06 while ensuring the ammonia effluent discharge concentration remains within the seasonal limit of 7.0 mg/L.

Table 4 illustrates the available data for the final effluent composite sample data reported for outfall 001 for use with the April 2021 DMR.

Table 4

April 2021- Final Effluent - Outfall 001											
NPDES Permit Discharge Limitations	Flow	CBOD <sub>5</sub>		TSS		NH <sub>4</sub> -N		Phosphorus, Total		Fecal Coliform	
	MGD	mg/L	lbs/ month	mg/L	lbs/ month	mg/L	lbs/ month	mg/L	lbs/ month	Geo Mean	Geo Mean
	Average	20	125	10	131	2.5	44	0.5	3	200	1,000
		40		15							
Sample Date											
April 6, 2021	0.356	2.0	5.9	5	14.8	0.579	1.72	0.10	0.30	1	0.0000
April 13, 2021	0.326	2.4	6.5	5	13.6	0.702	1.91		0.00	5	0.6990
April 20, 2021	0.295	3.5	4.3	7	17.2	0.280	0.69		0.00	3	0.4771
April 27, 2021	0.331										
Average	0.327	2.6	5.6	6	15.2	0.520	1.44	0.10	0.10	3	0.3920
Minimum	0.295	2.0	4.3	5	13.6	0.280	0.69	0.10	0.00	1	0.0000
Maximum	0.356	3.5	6.5	7	17.2	0.702	1.91	0.10	0.30	5	0.6990

Table 5 presents the available pollutant data for the influent wastewater collected at the doghouse manhole during April 2021. The influent wastewater pollutant loadings remain within the design criteria for the treatment process and equipment.

Table 5

April 2021 - Influent Wastewater											
Design Basis	Flow	BOD <sub>5</sub>		TSS		NH <sub>4</sub> -N		TKN, mg/L		Phosphorus, Total, mg/L	
		mg/L	lbs/day	mg/L	lbs/day	mg/L	lbs/day	mg/L	lbs/day	mg/L	lbs/day
	MGD Average	335	2,098	320	2,001	32	200	48	301	9.1	57
Sample Date											
April 6, 2021	0.528	263	1,159	205	903	31.7	140	32.0	141	5.6	24.7
April 13, 2021	0.488	201	819	300	1,222	28.4	116	35.5	145	6.3	25.7
April 20, 2021	0.446	140	521	12	45	30.8	115	34.0	126	4.6	17.1
April 27, 2021	0.479										
Average	0.4854	201	833	172	723	30	123	33.8	137	5.5	22.5
Minimum	0.4459	140	521	12	45	28	115	32.0	126	4.6	17.1
Maximum	0.5283	263	1,159	300	1,222	32	140	35.5	145	6.3	25.7

**PA DEP**

No activity

**Significant Rainfall**

During April, there six (6) days when rainfall occurred. There was one (1) event of rainfall occurring over three consecutive days. There were no storm events resulting in a daily precipitation amount equal to or greater than 0.50 inches. These events occurred on:

April 1 <sup>st</sup>	0.45 inches
April 10 <sup>th</sup>	0.15 inches
April 11 <sup>th</sup>	0.45 inches
April 12 <sup>th</sup>	0.40 inches
April 25 <sup>th</sup>	0.45 inches
April 30 <sup>th</sup>	0.40 inches

A total of 2.30 inches of rainfall measured during the month.

Plant operations were adjusted to manage the precipitation to prevent exceedances of the permitted discharge limitations for Outfall 001. Adjustments included reducing aeration minutes per cycle, extending decant minutes per cycle and reducing settling times.

**Minor Preventative Maintenance**

- Flushed chemical feed lines to the SBRs.
- Cleaned final effluent weir trough daily
- Skimmed surface of disc filters daily
- Drained and cleaned disc filters bi-weekly
- Cleaned buildings and laboratory
- Change the sample pump controller for the influent composite sampler
- There were no unplanned equipment repairs or maintenance during the month.

**Chemical Usage:**

April 2021		
Chemical	Daily Average	Total Monthly
Soda Ash	290	9,000
Aluminum Sulfate solution	70.0	2,030



**Flow data:**

April 2021			
Flow Meter Location	Total Volume for Month, MG	Average Daily Flow, gpd	Daily Maximum Flow, gpd
Influent Wastewater to Screening Building*	15.846	528,184	650,100
Influent Wastewater to SBRs*	14.749	491,631	595,328
Internal Recycle**	0.028	3,485	22,472
Treated Effluent to Disc Filters	14.622	487,390	547,968
Final Effluent Discharge	10.645	354,833	423,000
Applebrook Golf Course	Offline		

During April, the average monthly influent wastewater flow measured at the “field” flow meter was 528,184 gallons//day as compared to the influent flow into the SBRs as 491,631 gallon/day. The difference between the daily averages is 36,553 gpd. The “field” flow meter is over reporting flows as the flow measured into the SBRs should always be greater than the “field” flow meter due to internal recycle flows from the disc filter and centrifuge.

**DRAFT**  
**EAST GOSHEN TOWNSHIP MUNICIPAL AUTHORITY**  
**MEETING MINUTES**  
**April 12, 2021**

The East Goshen Township Municipal Authority held their regular meeting on Monday, April 12, 2021 at 7:00 pm. Due to restrictions caused by the COVID-19 virus, the meeting was held via electronic conferencing Zoom. Members in attendance were: Chairman Dana Pizarro, Phil Mayer, Jack Yahraes, Kevin Cummings, and Walter Wujcik. Also in attendance were: Mark Miller (Director of Public Works), Mike Ellis (Pennoni), Robert Jefferson (Gawthrop), Michael Lynch (Township Supervisor), Scott Towler (Big Fish), Chris Boylan (interim Financial Officer) and Susan Smith (PW Administrative Assistant).

**COMMON ACRONYMS:**

<i>BFES – Big Fish Environmental Services</i>	<i>MA- Municipal Authority</i>
<i>BOS – Board of Supervisors</i>	<i>NPDES – National Pollutant Discharge Elimination System</i>
<i>CB – Conservancy Board</i>	<i>PC – Planning Commission</i>
<i>DEP – Department of Environmental Protection</i>	<i>PM – Prevention Maintenance</i>
<i>EPA – Environmental protection Agency</i>	<i>PR – Park &amp; Recreation Board</i>
<i>HC – Historical Commission</i>	<i>RCSTP – Ridley Creek Sewer Treatment Plant</i>
<i>I&amp;I – Inflow &amp; Infiltration</i>	<i>SBR – Sequencing Batch Reactor</i>
<i>LCSTP – Lockwood Chase Sewer Treatment Plant</i>	<i>SSO – Sanitary System Overflow</i>
	<i>WAS – Waste Activated Sludge</i>

**Call to Order & Pledge of Allegiance**

Dana called the meeting to order at 7:00 pm and led those present in the Pledge of Allegiance. There was a moment of silence to remember our military, first responders, police and EMTs. Dana asked if anyone would be recording the meeting. There was no response.

**Chairman’s Report**

1. Dana reported that on March 24, 2021 he, Mark Miller, Rick Smith, and Mike Ellis met with West Goshen staff regarding Westtown Way Pump Station. Rick made up a spreadsheet showing estimates and costs. HRG responded that there was an evolution in the project. They were adamant about the project and their concerns are safety and reliability. Mike Ellis suggested they delay the project to see if they can get funding for it since it is a regional project. Mark Miller commented that Mike Moffa and several others want to go to the dry pump for safety reasons. They weren’t expecting PECO to be so expensive. They are looking into grants. Mike Ellis asked HRG for the updated design plan. They will get it to him when they have a final plan. Regarding meter data, the data we received prior did not justify the move to expensive pumps. Mike looked into several grants but they aren’t open for applications right now. Walter mentioned that in the past EPA construction grants would not give for I&I or extraneous equipment. Robert commented that he and Patrick went through the original agreement and amendments and found nothing regarding arbitration. He recommended a separate meeting to discuss how to go forward with this.

1 **Sewer Reports**

2 **1. Director of Public Works, Mark Miller's report for March 2021**

3 **Monthly Flows:** The average daily flow to West Goshen was 760,000 per day.

4 **Meters:** The meters were read on a daily basis. The meters were calibrated by Allied Control.  
5 The portable meters were read once a week and they were calibrated as well. They will be  
6 pulled at the end of the month.

7 **C.C. Collection** – We cleaned and televised 18,552 feet of pipe. We were able to locate several  
8 significant problems with piping and manholes. The Public Works team will take care of  
9 broken mains and laterals. We hired USG to repair the manhole on Heather Lane.

10 On March 23, we excavated the sewer main on Linden Lane at the interceptor connection.  
11 Through televising, we found the main was broken. After excavating, we found a strange  
12 Fernco connection at the main that had dropped approximately 4 inches. We removed 20 feet  
13 of AC pipe and replaced it with a stick of schedule 40 pipe directly into the main. We used no  
14 shrinking grout and a stainless steel pipe clamp to make the connection back to AC pipe. We  
15 backfilled the trench and compacted in one foot lifts. We then went back the next day and  
16 televised the repair and found no I&I.

17 We also found heavy I&I at Dutts Mill Towne Homes on a 4 inch lateral that ties into our  
18 interceptor. The I&I was very heavy with approximately 10 to 15 thousand gallons a day. We  
19 excavated for a broken lateral and dug down about 11 feet to locate the lateral line which was  
20 poorly installed. We ended up replacing 20 feet of pipe with schedule 40. We replaced several  
21 fittings and a clean out. We also raised two manholes up to grade and installed water tight/bolt  
22 down manhole castings and lids. We will be installing liners in two manholes at Heather Lane.

23 **R.C. Collection** – We plugged the trunk line and two manholes up from the screen room and  
24 had Pipe Data View come and jet. We were able to remove a ton of debris that has built up over  
25 time. A vac truck was on site to vacuum the channels in the screen room. We completed the  
26 repairs to 80 laterals in the Applebrook Towne homes on Hibberd Lane. We removed all the  
27 old lateral caps for each home and placed Buffalo boxes on each stack and vent caps. I would  
28 estimate that we reduced approximately 16,000 to 18,000 gallons of I&I. We also placed each  
29 lateral and vent on GPS when we were done. The plumber put a gopher through the lateral at  
30 the Old Mill House at Greenhill and Hershey Mill Road and then installed a new lateral.

31 We repaired a broken lateral at 1622 Bowtree. We had so much infiltration that the water has  
32 started coming up in the street. We will install a French drain to get the water to the stream.  
33 We repaired 2 manholes on Bowtree Drive.

34 **Ridley Creek Plant** – On March 26, 2021 we lost power at the plant due to the high winds. It caused  
35 a limb to strike a high power line then caused a fuse to blow. PECO was notified of the problem. I  
36 received a call from the dispatcher stating that this was taken care of on Saturday. After a lengthy  
37 discussion, he agreed to send a crew out to check the fuse. At noon on Sunday, we were back on  
38 street power.



- 1
- 2 **Alarms:** We responded to 27 alarms in March.
- 3 **PA One Calls:** We responded to over 300 PA One Calls for the month of March.
- 4 **Rainfall:** 3.55 inches for the month of March
- 5 **Lateral Caps:** We replaced 2 lateral caps in Supplee Valley
- 6

7 **2. Pennoni Engineer’s Report for March dated April 9, 2021**

8 **Ridley Creek Sewage Treatment Plant (RCSTP)**

- 9 • Caustic Soda Conversion – Design is ongoing specifically for the tank support slab. A draft
- 10 plan set has been submitted for Township and Authority review.

11 **Ridley Creek Collection System Permanent Meters**

- 12 • No activity since our last report. Updated vendor quotes were previously obtained for a new
- 13 RCSTP influent meter and manhole.

14 **Westtown Way Pump Station**

- 15 • We attended a coordination meeting between East Goshen and West Goshen on March 24 to
- 16 discuss concerns on the pump replacement and electrical scope and cost increase. There was
- 17 also discussion that the project schedule could be extended in order to pursue grants to cover
- 18 the cost increase and potentially part of the originally estimated costs. In follow-up to the
- 19 meeting, we requested updated design plans, cost estimates and pump station flow meter data
- 20 from HRG and are awaiting those documents for review.

21 **Sanitary Sewer Pipe Rehab**

- 22 • Supplee Valley – No activity since our last report. We will coordinate with Public Works on
- 23 televising additional sewers for the development of project scoping and budgeting for a 2022
- 24 rehabilitation.
  
- 25 • Hershey’s Mill Estates – Wetland delineation, bog turtle habitat investigation, and survey of
- 26 the topography and manholes has been completed. There are wetlands in the vicinity of the
- 27 sewers, some of which were identified as potential bog turtle habitat. We are currently
- 28 evaluating the associated permitting and design impacts of the habitat. A bog turtle
- 29 submission to US Fish and Wildlife will likely be needed, at which point exclusionary
- 30 measures, construction requirements, and any further investigations can be determined.
- 31 Design of the sanitary sewer system rehabilitation is now ongoing and preliminary plans are
- 32 expected to be submitted to the Township on April 9.

33 **Chapter 94 Reports**

- 34 • We completed the Chapter 94 reports for the RCSTP, West Goshen (Chester Creek) Service
- 35 Area and Westtown Service Areas and submitted them to DEP. A summary of the RCSTP
- 36 and West Goshen reports follow:
  
- 37 • RCSTP:
  - 38 1. The RCSTP’s average influent flow was 461,000 gpd in 2020, which is a 10% and
  - 39 14% decrease from the prior two years. Flows remain well within the 750,000 gpd

1 permitted average capacity of the plant. The 2020 flows are equivalent to 230  
2 gpd/EDU, which is consistent with the Township's planning flow rate of 225  
3 gpd/EDU.

- 4 2. The 5-year projected average flow to the RCSTP is 468,000 gpd. The projection does  
5 not include the Reservoir Road Pump Station diversion, so there is capacity for  
6 approximately 250,000 gpd for the diversion.
- 7 3. The RCSTP's average organic loading was 825 lbs BOD/day, which is a significant  
8 increase of approximately 18% from the preceding two years. However, it is well  
9 within the 2,098 lbs./day permitted capacity.
- 10 4. The 5-year projected average organic loading to the plant is 831 lbs BOD/day, which  
11 remains well within the permitted capacity.
- 12 5. The Hershey's Mill and Hunt Country Pump Stations operated within their permitted  
13 hydraulic capacities in 2020, and they are projected to continue to do so in the future  
14 due to little to no projected upstream connections.

15 • West Goshen Service Area:

- 16 1. East Goshen's average daily flow was 676,000 gpd in 2020 which is a significant  
17 decrease of 14% from the prior two years. The actual flow rate in 2020 was 191  
18 gpd/EDU which is well under the planning flow rate of 225 gpd/EDU. This is  
19 considered to be evidence of the ongoing success of the Township's aggressive I&I  
20 elimination program.
- 21 2. The 5-year projected average flow to Wet Goshen is 732,000 gpd which is well within  
22 the intermunicipal capacity of 1 MGD.
- 23 3. The Barkway and Ashbridge Pump Stations operated within their permitted hydraulic  
24 capacities in 2020 and are projected to continue to do so.

25 **I&I Program**

- 26 • We continued to analyze portable meter flow data in the Ridley Creek Collection System and  
27 provided observations and recommendations to Mark.

28 **New Connections**

- 29 • No activity since our last report.

30 **Industrial Pretreatment Ordinance**

- 31 • No activity since our last report. We will provide implementation actions for the industrial wastewater  
32 ordinance provisions: a resolution to set additional contaminant levels that trigger the industrial  
33 wastewater and creation of an application form and procedure.

34  
35 **3. Big Fish Environmental Services –**

36 The Ridley Creek sewage treatment plant outfall 001 achieved compliance with the permit discharge  
37 limitations for the month of February 2021. All supplemental reports were submitted with the DMR.  
38 Discharge to the Applebrook irrigation lagoon remained online. Chemical usage utilized for pH and  
39 total alkalinity remained consistent with previous months. No significant mechanical or operational  
40 issues were observed during operation of sludge dewatering equipment or SBR treatment process.  
41 There were no reported odor complaints during the month.

1  
2  
3  
4  
5  
6  
7  
8  
9  
10  
11  
12  
13  
14  
15  
16  
17  
18  
19  
20  
21  
22  
23  
24  
25  
26  
27  
28  
29  
30  
31  
32  
33  
34  
35  
36  
37  
38  
39  
40  
41  
42  
43  
44  
45  
46  
47

**Approval of Minutes**

Jack moved to approve the March 8, 2021 minutes as amended. Walter seconded the motion. The motion passed unanimously.

**Approval of Invoices**

Kevin moved to approve payment of the 5 Pennoni , 3 Deckman and 1 Gawthrop invoices. Jack seconded the motion. The motion passed unanimously.

Kevin moved to approve payment of the 7 previously paid invoices. Jack seconded the motion. The motion passed unanimously.

**Liaison Reports**

1. Conservancy Board – Walter reminded everyone that this Saturday April 17 is the date for Keep East Goshen Beautiful Day. Come to the Township Building between 8 & 9 am. The spring planting will be discussed at the next meeting this Wednesday. Mike Lynch commented that he has pursued the conversation with County Officials to see if they can centralize a program for picking up litter. He wants to set up an East Goshen core of 5-7 people who will pick up litter.

2. Board of Supervisors – Mike Lynch commented that they are just about at the end of the search for a Township Manager. A Director of Finance has been hired. David Ware will start next Monday. Rick Smith announced that part of the US stimulus package will go to municipalities. East Goshen will receive about \$1.7 M over the next two years.

**Financial Reports**

Chris Boylan provided the following report:

In March, the Municipal Authority recorded \$52,748.66 in revenues (from transfers) and \$34,072.59 in expenses for a positive variance of \$18,676.07. As of March 31, 2021, the fund balance was \$7,962.

**Old Business**

1. Resolution for Expenditures – Robert will follow up on this

**Goals**

Dana feels the numbers should be updated.

**New Business**

1. Maillie Audit – Chris commented that Maillie was satisfied with our process.

**Any Other Matter**

1. Board Member Training – Walter will sign up for this virtual course. He thinks they refunded our fee for last year since they couldn't have the courses due to COVID. Jack moved to authorize \$75 for Walter to attend the 2 virtual Board Member Training sessions. Phil seconded the motion. The motion passed unanimously.

2. There was discussion about dams in the area.

1 **Capacity Request**

2 1. 1577 Colonial Lane – The new owner wants to tie into the sewer system. There is a lateral there.  
3 Chris mentioned that the resident has asked about a payment plan. The cost is \$7,148.00 plus an  
4 inspection fee. Kevin moved to approve the tie into the sewer for 1577 Colonial Lane and offer the  
5 resident a one time payment plan not to exceed 2 years. Jack seconded the motion. The motion  
6 passed unanimously.

7  
8 **Correspondence-** Dana acknowledged receipt of the notice of a sign request from CDTI.

9  
10 **Public Comment -** None

11  
12 **Adjournment**

13 There being no further business Kevin moved to adjourn the meeting. Walter seconded the motion.  
14 The motion passed unanimously. The meeting was adjourned at 8:40 pm.  
15 The next regular meeting will be held on Monday, May 10, 2021 at 7:00 pm.

16  
17 Respectfully submitted,

18  
19  
20 Ruth Kiefer, Recording Secretary





# INVOICE

Remit Payment To:  
Pennoni Associates Inc.  
P.O. Box 827328  
Philadelphia, PA 19182-7328

Rick Smith  
East Goshen Municipal Authority  
1580 Paoli Pike  
West Chester, PA 19380-6199

Invoice No : 1068854  
Invoice Date : 04/29/2021  
Project : EGMAU20004  
Project Name : RCSTP Caustic Soda  
Conversion

---

**For Services Rendered Through 04/18/2021**

Continued design and plan preparation and submitted +/- 60% preliminary plans to Township.

Phase Code / Name	Contract Amount	Previously Billed	% Complete	Complete To Date	Amount This Invoice
01 -- Design and Permitting	\$26,500.00	\$11,925.00	60.00%	\$15,900.00	\$3,975.00
02 -- Construction Phase Services	est. \$5,400.00	\$0.00		\$0.00	\$0.00
<b>Total :</b>	<b>\$31,900.00</b>	<b>\$11,925.00</b>		<b>\$15,900.00</b>	<b>\$3,975.00</b>

**Amount Due This Invoice** \$3,975.00

*5/6/2021  
OK MSU*

West Goshen RCSTP Caustic Soda Conversion  
EGMAU20004 Invoice Summary  
Invoice Date 4/29/2021

<b>Project:</b>	EGMAU20004		
<b>Pennoni Job No.:</b>	RCSTP Caustic Soda Conversion		
<b>Invoice No:</b>	<b>1068854</b>		
<b>Invoice Period:</b>	3/22/2021	to	4/18/2021
<b>Initial Authorization:</b>	\$ 31,900.00	<b>Date:</b>	4/29/2021
<b>Contract Amount:</b>	\$ 31,900.00		
<b>Previously Invoiced:</b>	\$ 11,925.00		
<b>Current Invoice:</b>	\$ 3,975.00		
<b>Invoiced to Date (\$):</b>	\$ 15,900.00		
<b>Invoiced to Date (%):</b>	50%		
<b>Remaining Budget (\$):</b>	\$ 16,000.00		
<b>Remaining Budget (%):</b>	50%		

**Budget by Phase:**

<b>Phase Name:</b>	RCSTP Caustic Soda Conversion		
<b>Phase Budget:</b>	\$ 31,900.00		
<b>Previously Invoiced:</b>	\$ 11,925.00		
<b>Current Invoice:</b>	\$ 3,975.00		
<b>Invoiced to Date (\$):</b>	\$ 15,900.00		
<b>Invoiced to Date (%):</b>	50%		
<b>Remaining Budget (\$):</b>	\$ 16,000.00		
<b>Remaining Budget (%):</b>	50%		

**Comments:** Continued design and plan preparation and submitted +/- 60% preliminary plans to Township.



# INVOICE

Remit Payment To:  
Pennoni Associates Inc.  
P.O. Box 827328  
Philadelphia, PA 19182-7328

Rick Smith  
East Goshen Municipal Authority  
1580 Paoli Pike  
West Chester, PA 19380-6199

Invoice No : 1068855  
Invoice Date : 04/29/2021  
Project : EGMAU21001  
Project Name : 2021 General  
Services

---

**For Services Rendered Through 04/18/2021**

April Engineer's Report; prepared for and attended April MA meeting including review of RCSTP operator's report; prepared for and attended Westtown Way Pump Station (WWPS) coordination meeting at WGSTP with West Goshen and East Goshen representatives; and researched grants for WWPS and requested plans and meter data from HRG in follow-up to meeting.

Billing Limits	Current	Prior	To-Date
Total Billings	1,198.00	3,581.75	4,779.75
Limit			30,000.00
Remaining			25,220.25

**Labor**

	Hours	Rate	Amount
Authority Engineer	7.50	132.00	990.00
Senior Professional	.50	125.00	62.50
Associate Professional	1.50	97.00	145.50
Totals	9.50		1,198.00
<b>Total Labor</b>			<b>1,198.00</b>
<b>Total this Invoice</b>			<b><u>\$1,198.00</u></b>

5-6-2021  
ok msk

INVOICES DUE ON RECEIPT. Invoices outstanding over 30 days will have a Service Charge of 1 1/2% per month.

---

West Goshen Sewer System Consultation  
EGMAU21001 Invoice Summary  
Invoice Date 4/29/2021

<b>Project:</b>	EGMAU21001		
<b>Pennoni Job No.:</b>	2021 General Services		
<b>Invoice No:</b>	<b>1068855</b>		
<b>Invoice Period:</b>	3/22/2021	to	4/18/2021
<b>Initial Authorization:</b>	\$ 30,000.00	<b>Date:</b>	4/29/2021
<b>Contract Amount:</b>	\$ 30,000.00		
<b>Previously Invoiced:</b>	\$ 3,581.75		
<b>Current Invoice:</b>	\$ 1,198.00		
<b>Invoiced to Date (\$):</b>	\$ 4,779.75		
<b>Invoiced to Date (%):</b>			
<b>Remaining Budget (\$):</b>	\$ 25,220.25		
<b>Remaining Budget (%):</b>	84%		

**Budget by Phase:**

<b>Phase Name:</b>	2021 General Services
<b>Phase Budget:</b>	\$ 30,000.00
<b>Previously Invoiced:</b>	\$ 3,581.75
<b>Current Invoice:</b>	\$ 1,198.00
<b>Invoiced to Date (\$):</b>	\$ 4,779.75
<b>Invoiced to Date (%):</b>	
<b>Remaining Budget (\$):</b>	
<b>Remaining Budget (%):</b>	

**Comments:** April Engineer's Report; prepared for and attended April MA meeting including review of RCSTP operator's report; prepared for and attended Westtown Way Pump Station (WWPS) coordination meeting at WGSTP with West Goshen and East Goshen representatives; and researched grants for WWPS and requested plans and meter data from HRG in follow-up to meeting.





# INVOICE

Remit Payment To:  
Pennoni Associates Inc.  
P.O. Box 827328  
Philadelphia, PA 19182-7328

Rick Smith  
East Goshen Municipal Authority  
1580 Paoli Pike  
West Chester, PA 19380-6199

Invoice No : 1068856  
Invoice Date : 04/29/2021  
Project : EGMAU21002  
Project Name : 2021 I&I Support and Reports

**For Services Rendered Through 04/18/2021**

Analyzed portable meter data for week ending 3/29/2021.

Billing Limits	Current	Prior	To-Date
Total Billings	97.00	1,747.25	1,844.25
Limit			11,000.00
Remaining			9,155.75

**Labor**

	Hours	Rate	Amount
Associate Professional	1.00	97.00	97.00
Totals	1.00		97.00
<b>Total Labor</b>			<b>97.00</b>
<b>Total this Invoice</b>			<b><u><u>\$97.00</u></u></b>

5-6-2021  
OK MS

West Goshen Sewer System Consultation  
EGMAU21002 Invoice Summary  
Invoice Date 4/29/2021

<b>Project:</b>	EGMAU21002		
<b>Pennoni Job No.:</b>	2021 I&I Support and Reports		
<b>Invoice No:</b>	<b>1068856</b>		
<b>Invoice Period:</b>	3/22/2021	to	4/18/2021
<b>Initial Authorization:</b>	\$ 11,000.00	<b>Date:</b>	4/29/2021
<b>Contract Amount:</b>	\$ 11,000.00		
<b>Previously Invoiced:</b>	\$ 1,747.25		
<b>Current Invoice:</b>	\$ 97.00		
<b>Invoiced to Date (\$):</b>	\$ 1,844.25		
<b>Invoiced to Date (%):</b>	17%		
<b>Remaining Budget (\$):</b>	\$ 9,155.75		
<b>Remaining Budget (%):</b>	83%		

**Budget by Phase:**

<b>Phase Name:</b>	2021 I&I Support and Reports		
<b>Phase Budget:</b>	\$ 11,000.00		
<b>Previously Invoiced:</b>	\$ 1,747.25		
<b>Current Invoice:</b>	\$ 97.00		
<b>Invoiced to Date (\$):</b>	\$ 1,844.25		
<b>Invoiced to Date (%):</b>	17%		
<b>Remaining Budget (\$):</b>	\$ 9,155.75		
<b>Remaining Budget (%):</b>	83%		

**Comments:** Analyzed portable meter data for week ending 3/29/2021.



# INVOICE

Remit Payment To:  
Pennoni Associates Inc.  
P.O. Box 827328  
Philadelphia, PA 19182-7328

Rick Smith  
East Goshen Municipal Authority  
1580 Paoli Pike  
West Chester, PA 19380-6199

Invoice No : 1068857  
Invoice Date : 04/29/2021  
Project : EGMAU21003  
Project Name : 2020 Chapter 94  
Reports

For Services Rendered Through 04/18/2021

FINAL INVOICE

Finalized RCSTP, West Goshen (Chester Creek), and Westtown Chapter 94 Reports and submitted to PADEP.

Billing Limits	Current	Prior	To-Date
Total Billings	1,846.25	3,558.00	5,404.25
Limit			8,000.00
Remaining			2,595.75

### Labor

	Hours	Rate	Amount
Authority Engineer	5.25	132.00	693.00
Staff Professional	2.50	103.00	257.50
Associate Professional	7.75	97.00	751.75
Project Assistant	3.00	48.00	144.00
Totals	18.50		1,846.25
<b>Total Labor</b>			<b>1,846.25</b>
<b>Total this Invoice</b>			<b><u><u>\$1,846.25</u></u></b>

*5-5-2021  
ok Mikes*

INVOICES DUE ON RECEIPT. Invoices outstanding over 30 days will have a Service Charge of 1 1/2% per month.

West Goshen 2020 Chapter 94 Reports  
EGMAU21003 Invoice Summary  
Invoice Date 4/29/2021

<b>Project:</b>	EGMAU21003		
<b>Pennoni Job No.:</b>	2020 Chapter 94 Reports		
<b>Invoice No:</b>	<b>1068857</b>		
<b>Invoice Period:</b>	3/22/2021	to	4/18/2021
<b>Initial Authorization:</b>	\$ 8,000.00	<b>Date:</b>	4/29/2021
<b>Contract Amount:</b>	\$ 8,000.00		
<b>Previously Invoiced:</b>	\$ 3,558.00		
<b>Current Invoice:</b>	\$ 1,846.25		
<b>Invoiced to Date (\$):</b>	\$ 5,404.25		
<b>Invoiced to Date (%):</b>	68%		
<b>Remaining Budget (\$):</b>	\$ 2,595.75		
<b>Remaining Budget (%):</b>	32%		

**Budget by Phase:**

<b>Phase Name:</b>	2020 Chapter 94 Reports		
<b>Phase Budget:</b>	\$ 8,000.00		
<b>Previously Invoiced:</b>	\$ 3,558.00		
<b>Current Invoice:</b>	\$ 1,846.25		
<b>Invoiced to Date (\$):</b>	\$ 5,404.25		
<b>Invoiced to Date (%):</b>	68%		
<b>Remaining Budget (\$):</b>	\$ 2,595.75		
<b>Remaining Budget (%):</b>	32%		

**Comments:** FINAL INVOICE

Finalized RCSTP, West Goshen (Chester Creek), and Westtown Chapter 94 Reports and submitted to PADEP





# INVOICE

Remit Payment To:  
Pennoni Associates Inc.  
P.O. Box 827328  
Philadelphia, PA 19182-7328

Rick Smith  
East Goshen Municipal Authority  
1580 Paoli Pike  
West Chester, PA 19380-6199

Invoice No : 1068858  
Invoice Date : 04/29/2021  
Project : EGMAU21004  
Project Name : HM Estates Sewer  
Design & Permitting

---

**For Services Rendered Through 04/18/2021**

Continued preparation of wetland and bog turtle habitat assessment reports and associated plans; completed existing conditions plans based on field survey; performed field investigation of manhole conditions; continued design and initiated plan preparation; and submitted +/- 30% preliminary plans to Township..

Phase Code / Name	Contract Amount	Previously Billed	% Complete	Complete To Date	Amount This Invoice
01 -- Wetland & Watercourse Investigation	\$6,750.00	\$4,324.14	95.00%	\$6,412.50	\$2,088.36
02 -- Phase I Bog Turtle Habitat Assessment	\$6,750.00	\$3,155.76	95.00%	\$6,412.50	\$3,256.74
03 -- Survey	\$17,200.00	\$14,422.72	100.00%	\$17,200.00	\$2,777.28
04 -- Design	\$26,100.00	\$1,510.20	21.94%	\$5,726.02	\$4,215.82
05 -- Permitting	\$8,000.00	\$245.93	3.07%	\$245.93	\$0.00
<b>Total :</b>	<u>\$64,800.00</u>	<u>\$23,658.75</u>		<u>\$35,996.95</u>	<u>\$12,338.20</u>

**Amount Due This Invoice**

**\$12,338.20**

*5-5-2021*

West Goshen HM Estates Sewer Design Permitting  
EGMAU21004 Invoice Summary  
Invoice Date 4/29/2021

<b>Project:</b>	EGMAU21004		
<b>Pennoni Job No.:</b>	HM Estates Sewer Design & Permitting		
<b>Invoice No:</b>	1068858		
<b>Invoice Period:</b>	3/22/2021	to	4/18/2021
<b>Initial Authorization:</b>	\$ 64,800.00	<b>Date:</b>	4/29/2021
<b>Contract Amount:</b>	\$ 64,800.00		
<b>Previously Invoiced:</b>	\$ 23,658.75		
<b>Current Invoice:</b>	\$ 12,338.20		
<b>Invoiced to Date (\$):</b>	\$ 35,996.95		
<b>Invoiced to Date (%):</b>	56%		
<b>Remaining Budget (\$):</b>	\$ 28,803.05		
<b>Remaining Budget (%):</b>	44%		

**Budget by Phase:**

<b>Phase Name:</b>	HM Estates Sewer Design & Permitting		
<b>Phase Budget:</b>	\$ 64,800.00		
<b>Previously Invoiced:</b>	\$ 23,658.75		
<b>Current Invoice:</b>	\$ 12,338.20		
<b>Invoiced to Date (\$):</b>	\$ 35,996.95		
<b>Invoiced to Date (%):</b>	56%		
<b>Remaining Budget (\$):</b>	\$ 28,803.05		
<b>Remaining Budget (%):</b>	44%		

**Comments:** Continued preparation of wetland and bog turtle habitat assessment reports and associated plans; completed existing conditions plans based on field survey; performed field investigation of manhole conditions; continued design and initiated plan preparation; and submitted +/- 30% preliminary plans to Township.



Divisions of Colonial Electric:



65139

Original Invoice  
**INVOICE**



**Bright Light** **Annapolis Lighting**  
brightlightdesigncenter.com annapolislighting.com

INVOICE NUMBER	INVOICE DATE
13910722	03/11/21
PLEASE REMIT PAYMENT TO	
Colonial Electric Supply Company, Inc. PO BOX 414564 Boston MA 02241-4564	

Billing Questions?  
Call: THOMAS KARACKAI  
484-679-2295

**BILLING ADDRESS**

3824 1 AB 0.428 E0067X I0124 D7342397320 S2 P8113248 0001:0001

**SHIPPING ADDRESS**

EAST GOSHEN TOWNSHIP  
1580 PAOLI PIKE  
WEST CHESTER PA 19380-6107

**COPY**

EAST GOSHEN TOWNSHIP  
ATTN: ACCOUNTS PAYABLE  
1580 PAOLI PIKE  
WEST CHESTER PA 19380-6107

CUSTOMER PO	ORDER DATE	ORDERED BY	SHIP DATE	SHIPPED VIA	FREIGHT TERM
HEBBERT RD FLOW METE	03/10/21	JIM H	03/11/21		PAD
COMMENTS	CO. UNIT / WH	ENTERED BY	ACCOUNT ID	ORIGINAL INVOICE	SALESPERSON
	02 / DC	9795	E163	QT081267	0001

LINE	SKU	CUSTOMER SKU	DESCRIPTION	ORD QTY	SHIP QTY	BO QTY	UNIT PRICE	UM	EXTENDED AMT
10	CAR2		CAR2 2" SCHED 40 PVC COND \$	100	100	0	233.21	C	233.21
20	03448106046		CARUA9AJ 2" SCHED 40 90D EL \$	4	4	0	465.11	C	18.60
30	03448106146		CARE997J 2" PVC BELL END	3	3	0	915.08	C	27.45
40	03448106206		CARE943J 2" SCHED 40 MALE AD \$	2	2	0	172.38	C	3.45
50	78174720106		BPT106-S 2" STEEL LOCKNUT \$	2	2	0	56.69	C	1.13
60	78101161063		BLB2013 2" RIGID PIPE STRAP	5	5	0	242.98	C	12.15
70	03448100475		CAR59011N 2-IN POLE RISER	3	3	0	29.37	E	88.11
80	78101121330		BLB22SHGALV10 1-5/8 SLT STRU \$	10	10	0	175.00	C	17.50
90		MESSAGE	ALL STOCK						

APPROVED BY: MA  
DATE PAID: \_\_\_\_\_  
CHECK #: \_\_\_\_\_  
CHARGED TO: 07429.1505  
Hibberd Lane

**PAID**  
4/26

Invoice Due By: 4/10/2021

Invoices not paid within 30 days from the billing date are subject to a late fee of 1.5% per month. All sales are subject to Colonial's standard terms and conditions of sale in effect as of the date of the placement of an order. Colonial objects to any proposed term that is inconsistent with its standard terms of sale. Colonial's current standard terms and conditions of sale can be found at <http://www.colonialelectric.com/termsofsale> or a copy can be obtained from Colonial's Customer Financial Services Dept. All terms and conditions are subject to change without notice. To ensure proper customer service, Colonial Electric records all calls for quality and training.

<b>SUBTOTAL</b>	401.60
<b>S&amp;H CHGS</b>	
<b>0.00% TAX</b>	0.00
<b>PAY THIS AMOUNT</b>	<b>401.60</b>

Accepted By  
CHAS  
CHAS

For a Complete List of Locations  
Please Visit  
[www.colonialelectric.com](http://www.colonialelectric.com)

[www.BrightLightDesignCenter.com](http://www.BrightLightDesignCenter.com) [www.AnnapolisLighting.com](http://www.AnnapolisLighting.com)



# colonial electric supply

Since 1972... Powered By Excellence!

www.coloniaelectric.com

Downingtown (610) 873-6400  
Reading (610) 374-2134

Glenolden (610) 870-0160  
Warminster (215) 672-5600

Corporate Office  
201 W.Church Road  
King of Prussia, PA 19406  
Phone: (610) 312-8100  
Fax: (610) 312-8131

Myerstown (717) 376-3039  
Vineland (856) 462-63009  
Collegeville (610) 489-7600

APPROVED BY: W

DATE PAID: \_\_\_\_\_

CHECK #: \_\_\_\_\_

LANCASTER (717) 605-1101  
HAMMONTON (609) 704-99501  
PLEASANTVILLE (609) 645-8110

ALLENTOWN (610) 435-9691  
BROOKLYN (718) 210-0590  
WILMINGTON (302) 998-9993

# PACKING LIST

Invoice No.	Date	Page
13910722	03/10/21	1 of 1

Ship To  
EAST GOSHEN TOWNSHIP  
1580 PAOLI PIKE [F]  
  
WEST CHESTER PA 19380-6107

Sold To  
EAST GOSHEN TOWNSHIP E163  
ATTN: ACCOUNTS PAYABLE  
1580 PAOLI PIKE  
WEST CHESTER PA 19380

Customer PO	Date Ordered	Ordered By	Date Required
HEBBERT RD FLOW METE	03/10/21	JIM H	03/11/21

Shipped Via	Freight	Source	Co. Unit / WH	Entered By	Account ID
	PAD	QT	02 / DC	9795	E163

Original Invoice	Salesperson	Comments
QT081267	0001	

Job No	Contact	Payment Terms
	RECEIVING Phone: 610-692-7171	N30D

Line	SKU	WH Location	Description	Ordered	Back Ordered	Shipped	Unit Price	UM	Extended Amt
10	CAR2	Pipe	CAR2 2" SCHED 40 PVC COND \$	100	0	100	233.21	C	233.21
9	MESSAGE		PICKED BY 2641, WAVE:						
20	03448106046		CARUA9AJ 2" SCHED 40 90D EL \$	4	0	4	465.11	C	18.60
30	03448106146		CARE997J 2" PVC BELL END	3	0	3	915.08	C	27.45
40	03448106206		CARE943J 2" SCHED 40 MALE AD \$	2	0	2	172.38	C	3.45
50	78174720106		BPT106-S 2" STEEL LOCKNUT \$	2	0	2	56.69	C	1.13
60	78101161063		BLB2013 2" RIGID PIPE STRAP	5	0	5	242.98	C	12.15
70	03448100475	Pipe	CAR59011N 2-IN POLE RISER	3	0	3	29.37	E	88.11
80	78101121330	Pipe	BLB22SHGALV10 1-5/8 SLT STRU \$	10	0	10	175.00	C	17.50
90	MESSAGE		ALL STOCK						

<b>X</b>	Picked by 2641			<p>RETURNS POLICY: All returns must have prior authorization. Returns under \$25.00 will not be accepted. No cash refunds will be given for material returned. Returns must be undamaged in manufacturers original carton and may be subject to a restocking fee.</p> <p>SPECIAL ORDERS: A deposit is required on special order merchandise, and these orders are non-cancelable and non-returnable.</p> <p>TERMS &amp; CONDITIONS: Colonial's current standard terms and conditions of sale can be found at www.coloniaelectric.com/TermsOfSale or a copy can be obtained from Colonial's Customer Financial Services Dept. All terms and conditions are subject to change.</p>	TP: 1	Subtotal	401.60
	Coils				21:35:03	Transportation	0.00
	Pieces					.0% Tax	0.00
	Bundles					Total	401.60





65139

# CREDIT MEMO



**colonial**  
 electric supply company, inc.  
*Since 1972...Powered By Excellence!*  
 201 W. Church Road  
 King of Prussia, PA 19406  
 610-312-8100  
 www.colonialelectric.com



**colonial**  
 major projects  
 colonialelectric.com/cmp

**colonial**  
**teltek**  
 colonialteltek.com



**Bright Light**  
 brightlightdesigncenter.com



**Annapolis Lighting**  
 annapolislighting.com

INVOICE NUMBER	INVOICE DATE
13689859	10/23/20
PLEASE REMIT PAYMENT TO	
Colonial Electric Supply Company, Inc. PO BOX 414564 Boston MA 02241-4564	

Billing Questions?  
 Call: THOMAS KARACKAI  
 484-679-2295

# CCPY

**BILLING ADDRESS**

17224 1 MB 0.439 E0226X I0339 D6760172293 S2 P7782689 0001:0001

**SHIPPING ADDRESS**

EAST GOSHEN TOWNSHIP  
 RIDLEY CREEK SEWAGE PLANT  
 1751 TOWNE DR  
 WEST CHESTER PA 19380



EAST GOSHEN TOWNSHIP  
 ATTN: ACCOUNTS PAYABLE  
 1580 PAOLI PIKE  
 WEST CHESTER PA 19380-6107

CUSTOMER PO	ORDER DATE	ORDERED BY	SHIP DATE	SHIPPED VIA	FREIGHT TERM
RIDLEY CREEK GEN.	10/19/20		10/23/20		PPD
COMMENTS	CO. UNIT / WH	ENTERED BY	ACCOUNT ID	ORIGINAL INVOICE	SALESPERSON
	02 / 01	9795	E163	13655090	0001

LINE	SKU	CUSTOMER SKU	DESCRIPTION	ORD QTY	SHIP QTY	BO QTY	UNIT PRICE	UM	EXTENDED AMT
10	PRAXLE		PRAXLE PARALLEL REEL AXLE	-1	-1	0	91.96	E	-91.96
20	PREEL4	1193	PREEL4 4 LEG PARALLEL REEL	-1	0	-1	700.00	E	0.00
30	PREEL4	1194	PREEL4 4 LEG PARALLEL REEL	-1	0	-1	700.00	E	0.00
40	PREEL4	1222	PREEL4 4 LEG PARALLEL REEL	-1	0	-1	700.00	E	0.00

APPROVED BY: \_\_\_\_\_  
 DATE PAID: \_\_\_\_\_  
 CHECK #: \_\_\_\_\_  
 CHARGED TO: 59429.1503

*Credit Generator*

# PAID 4/26

Invoice Due By: 11/22/2020

Invoices not paid within 30 days from the billing date are subject to a late fee of 1.5% per month. All sales are subject to Colonial's standard terms and conditions of sale in effect as of the date of the placement of an order. Colonial objects to any proposed term that is inconsistent with its standard terms of sale. Colonial's current standard terms and conditions of sale can be found at <http://www.colonialelectric.com/termsofsale> or a copy can be obtained from Colonial's Customer Financial Services Dept. All terms and conditions are subject to change without notice. To ensure proper customer service, Colonial Electric records all bills for quality and training.

<b>SUBTOTAL</b>	-91.96
<b>S&amp;H CHGS</b>	
<b>0.00% TAX</b>	0.00
<b>PAY THIS AMOUNT</b>	<b>-91.96</b>

Accepted By  
  
 ANGEL

For a Complete List of Locations  
 Please Visit  
**www.colonialelectric.com**

www.BrightLightDesignCenter.com    www.AnnapolisLighting.com



## Barbara Phillips

---

**From:** Chris Boylan  
**Sent:** Friday, April 23, 2021 1:53 PM  
**To:** Barbara Phillips  
**Cc:** David Ware  
**Subject:** FW: Tax Exempt question

Barb,

Per the auditors, we are not exempt from paying NJ sales tax. Please process the applicable tax on Xylem invoices. I know this doesn't happen often, but it might be a good idea to let Mark Miller know so, in the future, he is aware of this and possibly arrange alternative to picking up products in NJ.

Thanks!  
Chris

**Ms. Chris Boylan**  
Senior Staff Accountant  
East Goshen Township  
[cboylan@eastgoshen.org](mailto:cboylan@eastgoshen.org)  
610-692-7171

---

**From:** Christopher Fratinardo <cfratinardo@maillie.com>  
**Sent:** Friday, April 23, 2021 1:33 PM  
**To:** Chris Boylan <cboylan@eastgoshen.org>  
**Subject:** FW: Tax Exempt question

Hi Chris,

Please see below. Based on our research it appears you cannot get out of paying the sales tax. Jay did mention next time if you have the products delivered to PA you could potentially get out of paying the sales tax. I know this is not the answer you were looking for, but I hope this helps.

Please let me know if you have any questions.

Thank you,

**Chris Fratinardo, CPA** | Senior Accountant  
600 Willowbrook Lane, Suite 624, West Chester, PA 19382  
T: 610-696-4353 x411 | D: 484-875-6033 | F: 610-430-8811  
E: [cfratinardo@maillie.com](mailto:cfratinardo@maillie.com) | W: [www.maillie.com](http://www.maillie.com)



Please [Click Here](#) to securely send us confidential information

Way T. Wiater <[jwiater@maillie.com](mailto:jwiater@maillie.com)>

, April 23, 2021 1:29 PM

Christopher Fratinardo <[cfratinardo@maillie.com](mailto:cfratinardo@maillie.com)>

RE: Tax Exempt question

Chris,

I did some research on your question. New Jersey doesn't appear to provide a sales tax exemption for other states or their political subdivisions. They do provide exemptions to Federal Gov't departments but not other states. Once you take possession of the goods in NJ they deem that to be a NJ sale subject to nj sales tax. Next time, I think they could get around the sales tax by having it delivered to PA vs. picking it up in NJ. The TWP would take possession in PA and they could file rev form 1220 exemption certificate and check off that they were a political subdivision/township and exempt.

Departments, agencies, instrumentalities and political subdivisions of the United States and New Jersey and federal credit unions should not use this form. Qualifying government entities may make tax-free purchases when paying with government funds (purchase orders, government checks, and certain SmartPay cards). Upon request, the Division can supply a government entity letter. **New Jersey tax law does not provide sales tax exemptions to other states or their political subdivisions.**

Sorry for the result. I could bounce this off someone else but I think they will come to the same conclusion.

Regards,

**Jason Wiater** | Principal

600 Willowbrook Lane, Suite 624, West Chester, PA 19382

| D: 484.999.6135 | F: 610.430.8811

E: [jwiater@maillie.com](mailto:jwiater@maillie.com) | W: [www.maillie.com](http://www.maillie.com)



Please [Click Here](#) to securely send us confidential information

mail is strictly prohibited.

This e-mail contains PRIVILEGED AND CONFIDENTIAL INFORMATION intended only for the use of the individual named above. If you are not the intended recipient of this e-mail, or the employee or agent responsible for delivering this to the intended recipient, you are hereby notified that any dissemination or copying of this e-mail is strictly prohibited.





# Invoice

Sold by:

**Branch 001**  
 84 Floodgate Road, Dock A  
 Bridgeport, NJ 08014  
 Tel: 856-467-3636  
 Fax: 856-467-4841

Remit to: Xylem Dewatering Solutions, Inc.  
 26717 Network Place  
 Chicago, IL 60673-1267  
 Phone: 1.855.278.2248 (opt 1)

**NOTE:** Valued customers, please note the NEW remit address change included on this invoice.

S  
O  
L  
D  
T  
O  
 East Goshen Township  
 1580 Paoli Pike  
 West Chester, PA 19380-6107

S  
H  
I  
P  
T  
O  
 East Goshen Township  
 CPU - Branch 1  
 84 Floodgate Rd  
 Bridgeport, NJ 08014-1001

Cust. No.	Invoice Date	Invoice No.
00005093	01-07-2021	401061802-2

Page 1 of 1

Customer PO	Ordered By	Contract Date	Date Shipped	Sale Contract #	Sales Representative	Order Taken By	Payment Terms
	Mr. Kevin Miller	01-07-2021	01-07-2021	201079370	Daniel R. Pulcher	Daniel R. Pulcher	Net 60

ITEM	DESCRIPTION	QTY ORDERED	QTY SHIPPED	QTY B/O'd	SELL PRICE	EXTENDED SELL
HSDS080050QDD	8" x 50' Heavy Duty Orange Layflat Hose with QD Fittings	4	4	0		
DZONECUSTPU	Customer Pick-Up/Return	1	1	0		

COPY

PAID  
4/26

Not eligible for tax exemption

Paid

APPROVED BY: \_\_\_\_\_  
 DATE PAID: \_\_\_\_\_  
 CHECK #: \_\_\_\_\_  
 CHARGED TO: 074291505

ALL PAST DUE INVOICES ARE SUBJECT TO  
 1 1/2% PER MONTH SERVICE CHARGE

Merchandise	Labor	Shipping	Misc. Charges	Taxes
<del>\$5,768.40</del>	\$ 0.00	\$ 0.00	\$ 0.00	\$ 382.02

**Important Information:** Due to fraud attempts any communication for changes of bank account details have to be confirmed by a call-back with your respective Xylem contact person.

Total Invoice

~~\$6,148.42~~

65618

## Barbara Phillips

---

**From:** Chris Boylan  
**Sent:** Friday, April 23, 2021 1:53 PM  
**To:** Barbara Phillips  
**Cc:** David Ware  
**Subject:** FW: Tax Exempt question

Barb,

Per the auditors, we are not exempt from paying NJ sales tax. Please process the applicable tax on Xylem invoices. I know this doesn't happen often, but it might be a good idea to let Mark Miller know so, in the future, he is aware of this and possibly arrange alternative to picking up products in NJ.

Thanks!  
Chris

**Ms. Chris Boylan**  
Senior Staff Accountant  
East Goshen Township  
[cboylan@eastgoshen.org](mailto:cboylan@eastgoshen.org)  
610-692-7171

---

**From:** Christopher Fratinardo <cfratinardo@maillie.com>  
**Sent:** Friday, April 23, 2021 1:33 PM  
**To:** Chris Boylan <cboylan@eastgoshen.org>  
**Subject:** FW: Tax Exempt question

Hi Chris,

Please see below. Based on our research it appears you cannot get out of paying the sales tax. Jay did mention next time if you have the products delivered to PA you could potentially get out of paying the sales tax. I know this is not the answer you were looking for, but I hope this helps.

Please let me know if you have any questions.

Thank you,

**Chris Fratinardo, CPA** | Senior Accountant  
600 Willowbrook Lane, Suite 624, West Chester, PA 19382  
T: 610-696-4353 x411 | D: 484-875-6033 | F: 610-430-8811  
E: [cfratinardo@maillie.com](mailto:cfratinardo@maillie.com) | W: [www.maillie.com](http://www.maillie.com)



Please [Click Here](#) to securely send us confidential information



**From:** Jay T. Wiater <[jwiater@maillie.com](mailto:jwiater@maillie.com)>  
**Sent:** Friday, April 23, 2021 1:29 PM  
**To:** Christopher Fratinardo <[cfratinardo@maillie.com](mailto:cfratinardo@maillie.com)>  
**Subject:** RE: Tax Exempt question

Hi Chris,

I did some research on your question. New Jersey doesn't appear to provide a sales tax exemption for other states or their political subdivisions. They do provide exemptions to Federal Gov't departments but not other states. Once you take possession of the goods in NJ they deem that to be a NJ sale subject to nj sales tax. Next time, I think they could get around the sales tax by having it delivered to PA vs. picking it up in NJ. The TWP would take possession in PA and they could file rev form 1220 exemption certificate and check off that they were a political subdivision/township and exempt.

Departments, agencies, instrumentalities and political subdivisions of the United States and New Jersey and federal credit unions should not use this form. Qualifying government entities may make tax-free purchases when paying with government funds (purchase orders, government checks, and certain SmartPay cards). Upon request, the Division can supply a government entity letter. **New Jersey tax law does not provide sales tax exemptions to other states or their political subdivisions.**

Sorry for the result. I could bounce this off someone else but I think they will come to the same conclusion.

Regards,

**Jason Wiater** | Principal  
600 Willowbrook Lane, Suite 624, West Chester, PA 19382  
| D: 484.999.6135 | F: 610.430.8811  
E: [jwiater@maillie.com](mailto:jwiater@maillie.com) | W: [www.maillie.com](http://www.maillie.com)



Connect with us:  
[in](#) [@](#) [f](#) [t](#)  
[Maillie.com Blog](http://Maillie.com Blog)

Please [Click Here](#) to securely send us confidential information

ail is strictly prohibited.

This e-mail contains PRIVILEGED AND CONFIDENTIAL INFORMATION intended only for the use of the individual named above. If you are not the intended recipient of this e-mail, or the employee or agent responsible for delivering this to the intended recipient, you are hereby notified that any dissemination or copying of this e-mail is strictly prohibited.



Sold by:

**Invoice**

Branch 001  
 84 Floodgate Road, Dock A  
 Bridgeport, NJ 08014  
 Tel: 856-467-3636  
 Fax: 856-467-4841

2019  
 Remit to: Xylem Dewatering Solutions, Inc.  
 26717 Network Pike  
 Chicago, IL 60673-1257  
 Phone: 1.855.278.2248 (opt 1)

NOTE: Valued customers, please note the NEW remit address change included on this invoice.

S  
O  
L  
D  
  
T  
O  
  
East Goshen Township  
 1580 Paoli Pike  
 West Chester, PA 19380-6107

S  
H  
I  
P  
  
T  
O  
  
East Goshen Township  
 CPU - Branch 1  
 84 Floodgate Rd  
 Bridgeport, NJ 08014-1001

Cust. No.	Invoice Date	Invoice No.
00005093	01-21-2021	401064280

Page 1 of 1

Customer PO	Ordered By	Contract Date	Rental Contract #	Sales Representative	Order Taken By	Payment Terms	
	Mr. Kevin Miller	01-07-2021	201079369	Daniel R. Pulcher	Daniel R. Pulcher	Net 60	
QTY	ITEM	DESCRIPTION		PER	D/W/M	RATE	AMOUNT
		<b>Rental 01/07/2021 Thru 01/20/2021 *Return*</b>					
1	D-61860	CD150M 6" 4045D-T2 RGT 60G • QD Suction & Discharge; Overtime Running and Preventative Maintenance is Included		2	W		
4	HSDS060050QDDR	6" x 50' HD Layflat Hose W/QD		2	W		
3	HSWS060010QDSR	6" x 10' Black Water Suction Hose W/QD		2	W		
2	BN06090QDG000R	6" 90 Degree QD Bend		2	W		
1	BN060SBQDG000R	6" QD Step Bow		2	W		
1	SCMS060NA000R	6" Suction Screen • Large Hole w/MQD		2	W		
1	ENVFEE	Environmental Fee					

COPY

APPROVED BY: Mfz  
 DATE PAID: \_\_\_\_\_  
 CHECK #: \_\_\_\_\_  
 CHARGED TO: 07429.1805

PAID  
426

PAY - NOT ELIGIBLE FOR TAX EXEMPT

Paid

ALL PAST DUE INVOICES ARE SUBJECT TO 1 1/2% PER MONTH SERVICE CHARGE

Rental	Labor	Shipping	Misc. Charges	Taxes
\$ 2,164.80	\$ 0.00	\$ 0.00	\$ 20.00	\$ 144.74

**Important Information:** Due to fraud attempts any communication for changes of bank account details have to be confirmed by a call-back with your respective Xylem contact person.

**Total Invoice**

**\$ 2,329.54**

## Barbara Phillips

---

**From:** Chris Boylan  
**Sent:** Friday, April 23, 2021 1:53 PM  
**To:** Barbara Phillips  
**Cc:** David Ware  
**Subject:** FW: Tax Exempt question

Barb,

Per the auditors, we are not exempt from paying NJ sales tax. Please process the applicable tax on Xylem invoices. I know this doesn't happen often, but it might be a good idea to let Mark Miller know so, in the future, he is aware of this and possibly arrange alternative to picking up products in NJ.

Thanks!  
Chris

**Ms. Chris Boylan**  
Senior Staff Accountant  
East Goshen Township  
[cboylan@eastgoshen.org](mailto:cboylan@eastgoshen.org)  
610-692-7171

---

**From:** Christopher Fratinardo <cfratinardo@maillie.com>  
**Sent:** Friday, April 23, 2021 1:33 PM  
**To:** Chris Boylan <cboylan@eastgoshen.org>  
**Subject:** FW: Tax Exempt question

Hi Chris,

Please see below. Based on our research it appears you cannot get out of paying the sales tax. Jay did mention next time if you have the products delivered to PA you could potentially get out of paying the sales tax. I know this is not the answer you were looking for, but I hope this helps.

Please let me know if you have any questions.

Thank you,

**Chris Fratinardo, CPA** | Senior Accountant  
600 Willowbrook Lane, Suite 624, West Chester, PA 19382  
T: 610-696-4353 x411 | D: 484-875-6033 | F: 610-430-8811  
E: [cfratinardo@maillie.com](mailto:cfratinardo@maillie.com) | W: [www.maillie.com](http://www.maillie.com)



Connect with us:  
[in](#) [@](#) [f](#) [t](#)  
[Maillie.com Blog](http://www.maillie.com/blog)

Please [Click Here](#) to securely send us confidential information

**From:** Jay T. Wiater <[jwiater@maillie.com](mailto:jwiater@maillie.com)>  
**Sent:** Friday, April 23, 2021 1:29 PM  
**To:** Christopher Fratinardo <[cfratinardo@maillie.com](mailto:cfratinardo@maillie.com)>  
**Subject:** RE: Tax Exempt question

Hi Chris,

I did some research on your question. New Jersey doesn't appear to provide a sales tax exemption for other states or their political subdivisions. They do provide exemptions to Federal Gov't departments but not other states. Once you take possession of the goods in NJ they deem that to be a NJ sale subject to nj sales tax. Next time, I think they could get around the sales tax by having it delivered to PA vs. picking it up in NJ. The TWP would take possession in PA and they could file rev form 1220 exemption certificate and check off that they were a political subdivision/township and exempt.

Departments, agencies, instrumentalities and political subdivisions of the United States and New Jersey and federal credit unions should not use this form. Qualifying government entities may make tax-free purchases when paying with government funds (purchase orders, government checks, and certain SmartPay cards). Upon request, the Division can supply a government entity letter. **New Jersey tax law does not provide sales tax exemptions to other states or their political subdivisions.**

Sorry for the result. I could bounce this off someone else but I think they will come to the same conclusion.

Regards,

**Jason Wiater** | Principal  
600 Willowbrook Lane, Suite 624, West Chester, PA 19382  
| D: 484.999.6135 | F: 610.430.8811  
E: [jwiater@maillie.com](mailto:jwiater@maillie.com) | W: [www.maillie.com](http://www.maillie.com)



Connect with us:  
[in](#) [@](#) [f](#) [t](#)  
[Maillie.com Blog](http://Maillie.com/Blog)

Please [Click Here](#) to securely send us confidential information

ail is strictly prohibited.

This e-mail contains PRIVILEGED AND CONFIDENTIAL INFORMATION intended only for the use of the individual named above. If you are not the intended recipient of this e-mail, or the employee or agent responsible for delivering this to the intended recipient, you are hereby notified that any dissemination or copying of this e-mail is strictly prohibited.

# Memo

---

To: Municipal Authority  
From: Dave Ware  
Re: MA April 2021 Financial Report  
Date: May 7, 2021

---

In April, 2021, the Municipal Authority recorded \$47,776.45 in revenues (from transfers) and \$50,849.04 in expenses, for a negative variance of \$3,072.59. As of April 30, 2021, the fund balance was \$4,890.

A complete list of 2021 YTD MA revenues and expenses is attached.

I will "see" you all at the meeting on Monday, May 10, 2021 at 7PM.

EAST GOSHEN TOWNSHIP  
Other Funds  
April 2021  
Municipal Authority

Account Title	Acct #	Annual Budget	Y-T-D Budget	Y-T-D Actual	Y-T-D Variance	M-T-D Budget	M-T-D Actual	M-T-D Variance
<b>REVENUE</b>								
INTEREST EARNINGS	07341 1000			1.56	1.56		0.16	0.16
CAPITAL RESERVE-INTEREST	07341 1010							
INTEREST EARNED - CONSTRUCTION	07341 1020							
DCED GRANT	07354 0400	152,980						
C.C. TAPPING FEES	07364 1100							
R.C.TAPPING FEES	07364 1110							
M.C. LOAN PAYMENTS	07364 1120							
CONNECTION FEES - SEWER	07364 1130			1,127.52	1,127.52			
MISCELLANEOUS REVENUE	07380 1000	565	424	564.48	140.48			
TRANSFER FROM GENERAL ACCT	07392 0100							
TRANSFER FROM SEWER OPERATING	07392 0500	279,915	178,360	36,501.98	(141,858.39)	47,850	13,737.91	(34,112.09)
TRANSFER FROM SEWER CAP RESV	07392 0501							
TRANSFER-ANNUAL CAP.RESERVE	07392 0510							
GRANT REVENUE	07392 0800							
LOAN PROCEEDS - SEWER PROJECT	07392 0804							
TRANSFER FROM SEWER CAP RESERVE	07392 0900	122,000	49,052	93,472.57	44,420.69		34,038.38	34,038.38
<b>TOTAL REVENUE</b>		<b>555,460</b>	<b>227,836</b>	<b>131,668.11</b>	<b>(96,168.14)</b>	<b>47,850</b>	<b>47,776.45</b>	<b>(73.55)</b>
<b>EXPENSES</b>								
ADMINISTRATIVE WAGES	07424 1400	30,000	7,500	7,373.83	126.17			
R.C. LOAN ISSUANCE COSTS	07424 1500							
MISCELLANEOUS EXPENSE	07424 3000			1,518.25	(1,518.25)		880.25	(880.25)
MUNIC.AUTH.-AUDITING	07424 3110	9,440	6,855	10,000.00	(3,145.48)		2,158.00	(2,158.00)
ENGINEERING SERVICES	07424 3130	60,900	24,741	17,371.06	7,370.22	3,751	11,300.81	(7,549.68)
LEGAL SERVICES	07424 3140	8,120	2,259	3,277.10	(1,018.37)	372	2,437.10	(2,065.41)
W.G. C.C.STP-UPGRADE	07424 7400							
MANHOLE COVER REPLACEMENTS	07424 7405							
C.C. CAPITAL - METERS	07424 7410							
C.C. CAPITAL- COLLECTION	07424 7420							
C.C. CAPITAL- INTERCEPTOR	07424 7430							
CAPITAL PROJ.-ENGINEERING	07424 7431							
R.C. CAPITAL-STP	07424 7440							
R.C. CAPITAL - COLLECTION	07424 7450							
R.C.-CAP. PROJ.-ENGINEER	07424 7451							
CAP.REPLACEMENT R.C.	07424 7490							
CAPITAL REPLACEMENT ASHBRIDGE	07424 7491							
HERSHEY MILL STATION - ENGINEER	07426 1000							
HERSHEY MILL STATION - CONSTRUCTION	07426 2000							
TALLMADGE DRIVE	07426 3000							



EAST GOSHEN TOWNSHIP  
Other Funds  
April 2021  
Municipal Authority

Account Title	Acct #	Annual Budget	Y-T-D Budget	Y-T-D Actual	Y-T-D Variance	M-T-D Budget	M-T-D Actual	M-T-D Variance
RESERVOIR PUMP STATION - ENGINEER	07428 1000							
RESERVOIR PUMP STATION CONSTRUCTION	07428 2000							
RELINING	07429 1500							
BARKWAY PUMP STATION CAPITAL	07429 1501			5,117.00	(5,117.00)		5,117.00	(5,117.00)
HERSHEYS MILL PUMP STATION CAPITAL	07429 1503			8,509.57	(8,509.57)		2,694.04	(2,694.04)
HUNT CO PUMP STATION CAPITAL	07429 1504	87,000	8,889	6,831.00	2,058.13	436	6,831.00	(6,394.70)
RCSTP CAPITAL	07429 1505	230,000		73,015.00	(73,015.00)		19,396.34	(19,396.34)
ASBESTOS CONCRETE ENGINEERING	07429 3130							
DIVERSION PROJ.- LEGAL	07429 3166							
WEST GOSHEN CAPITAL	07429 6100							
M.C.-DVRFA-DEBT SERVICE	07471 1000							
M.A.-R.C. DEBT SERVICE	07471 1010							
DVRFA PUMPING STATIONS - PRINCIPAL	07471 2000							
M.C.-DVRFA-INTEREST PAYMN	07472 1000							
M.A.-R.C. INTEREST	07472 1010							
DVRFA PUMPING STATIONS - INTEREST	07472 2000							
Bank Fees	07491 5001			138.00	(138.00)		34.50	(34.50)
TRANSFER TO GENERAL FUND	07492 0100							
TRANSFER TO SEW.OPERATING	07492 0500							
TRF TO SEWER CAPITAL RESERVE FUND	07492 0550							
TRANSFER TO AUTHORITY CAP FUND	07492 0990							
TOTAL EXPENSES		425,460	50,244	133,150.81	(82,907.15)	4,559	50,849.04	(46,289.92)
NET RESULT FROM OPERATIONS		130,000	177,593	(1,482.70)	(179,075.29)	43,291	(3,072.59)	(46,363.47)

Municipal Authority  
April 2021 YTD Financials

Account #	Description	Per	Src	Trx#	Debits	Credits	Balance	Date	Check#	ID #	Name	Description	Description 2
07341-1000	BEGINNING BALANCE							0					
07341-1000	INTEREST EARNINGS	2101	JE	76976	34.5	0		0 1/5/2021	BANK FEES		REIMBURS BANK FEES		
07341-1000	INTEREST EARNINGS	2102	JE	77346	0	34.5		0 2/8/2021	REVERSE		REVERSE & BANK FEE CHARGES		
07341-1000	INTEREST EARNINGS	2102	JE	77356	0	0.49		0 2/8/2021	INTEREST		INTEREST E	7100.1035	
07341-1000	INTEREST EARNINGS	2102	JE	77638	0	0.44		0 2/28/2021	INTEREST		INTEREST E	7100.1035	
07341-1000	INTEREST EARNINGS	2103	JE	78076	0	0.47		0 3/31/2021	INTEREST		INTEREST E	7100.103	
07341-1000	INTEREST EARNINGS	2104	JE	78492	0	0.16		0 5/3/2021	INTEREST		INTEREST E	7100.1035	
07364-1130	BEGINNING BALANCE							0					
07364-1130	CONNECTION FEES - SEWER	2101	CR	77256	0	423		0 1/28/2021	2694 012022	1	STOFFLET,		
07364-1130	CONNECTION FEES - SEWER	2101	JE	77257	141.12	0		0 1/28/2021	PINE ROCK		ANNUAL P INTERST PORTION - STOFFLET		
07364-1130	CONNECTION FEES - SEWER	2102	CR	77466	0	423		0 2/17/2021	745 012023	1	JACOBS, R		
07364-1130	CONNECTION FEES - SEWER	2102	JE	77467	141.12	0		0 2/17/2021	PINE ROCK		ANNUAL P INTEREST PORTION - JACOBS		
07364-1130	CONNECTION FEES - SEWER	2103	CR	77801	0	423		0 3/11/2021	4276 012021	1	GEORGE SI		
07364-1130	CONNECTION FEES - SEWER	2103	CR	78004	0	423		0 3/26/2021	8842992 012024	1	PAPPANO,		
07364-1130	CONNECTION FEES - SEWER	2103	JE	77802	141.12	0		0 3/11/2021	PINEROCK		INTEREST F SMITH		
07364-1130	CONNECTION FEES - SEWER	2103	JE	78005	141.12	0		0 3/26/2021	PINE ROCK		ANNUAL P INTEREST PORTION - PAPPANO		
07380-1000	BEGINNING BALANCE							0					
07380-1000	MISCELLANEOUS REVENUE	2101	JE	77257	0	141.12		0 1/28/2021	PINE ROCK		ANNUAL P INTERST PORTION - STOFFLET		
07380-1000	MISCELLANEOUS REVENUE	2102	JE	77467	0	141.12		0 2/17/2021	PINE ROCK		ANNUAL P INTEREST PORTION - JACOBS		
07380-1000	MISCELLANEOUS REVENUE	2103	JE	77802	0	141.12		0 3/11/2021	PINEROCK		INTEREST F SMITH		
07380-1000	MISCELLANEOUS REVENUE	2103	JE	78005	0	141.12		0 3/26/2021	PINE ROCK		ANNUAL P INTEREST PORTION - PAPPANO		
07392-0500	BEGINNING BALANCE							0					
07392-0500	TRANSFER FROM SEWER OPERATING	2101	JE	77062	0	66		0 1/12/2021	XFER		XFER \$ FRC JANUARY EXPENSES		
07392-0500	TRANSFER FROM SEWER OPERATING	2101	JE	77072	0.01	0		0 1/13/2021	ADJUST		ADJUST TR		
07392-0500	TRANSFER FROM SEWER OPERATING	2102	JE	77393	0	3031.25		0 2/9/2021	XFER		XFER FUNC SEWER CAP. RE:FEB 2021 EXP.		
07392-0500	TRANSFER FROM SEWER OPERATING	2103	JE	77621	0	2525		0 3/1/2021	XFER		XFER \$ TO EXPENSES		
07392-0500	TRANSFER FROM SEWER OPERATING	2103	JE	77775	0	3813		0 3/10/2021	XFER		XFER \$ TO		
07392-0500	TRANSFER FROM SEWER OPERATING	2103	JE	77959	0	5955		0 3/24/2021	XFER		XFER \$ FRC		
07392-0500	TRANSFER FROM SEWER OPERATING	2103	JE	78050	0	7373.83		0 3/31/2021	XFER		XFER \$ TO		
07392-0500	TRANSFER FROM SEWER OPERATING	2104	JE	78253	0	13737.91		0 4/15/2021	XFER		XFER \$ FR:		
07392-0900	BEGINNING BALANCE							0					
07392-0900	TRANSFER FROM SEWER CAP RESERVE	2102	JE	77393	0	12162.92		0 2/9/2021	XFER		XFER FUNC SEWER CAP. RE:FEB 2021 EXP.		
07392-0900	TRANSFER FROM SEWER CAP RESERVE	2102	JE	77434	0	15035.91		0 2/12/2021	XFER		XFER \$ FRC		
07392-0900	TRANSFER FROM SEWER CAP RESERVE	2103	JE	77623	0	15721.12		0 3/1/2021	XFER		XFER \$ FRC MA RE: EXPENSES		
07392-0900	TRANSFER FROM SEWER CAP RESERVE	2103	JE	77777	0	10188.22		0 3/10/2021	XFER		XFER \$ TO RESERVE		
07392-0900	TRANSFER FROM SEWER CAP RESERVE	2103	JE	77779	0	5785.09		0 3/10/2021	XFER		XFER \$ TO RESERVE		
07392-0900	TRANSFER FROM SEWER CAP RESERVE	2103	JE	77827	382.02	0		0 3/12/2021	XFER		RETURN \$ XFER ERROR 2/9/21		
07392-0900	TRANSFER FROM SEWER CAP RESERVE	2103	JE	77957	0	922.95		0 3/24/2021	XFER		XFER \$ FRC		
07392-0900	TRANSFER FROM SEWER CAP RESERVE	2104	JE	78255	0	33111.72		0 4/15/2021	XFER		XFER \$ FR:		
07392-0900	TRANSFER FROM SEWER CAP RESERVE	2104	JE	78369	0	926.66		0 4/26/2021	XFER		XFER \$ FRC MUNICIPAL AUTH. 07		
07424-1400	BEGINNING BALANCE							0					
07424-1400	ADMINISTRATIVE WAGES	2103	CD	78032	7373.83	0		0 3/30/2021	3264	425	EAST GOSF QTR.1-2021 REIMBURSEMENT		
07424-3000	BEGINNING BALANCE							0					
07424-3000	MISCELLANEOUS EXPENSE	2103	CD	77949	638	0		0 3/24/2021	3261	3871	DELAWAREI 2021 ANNUAL FEE		
07424-3000	MISCELLANEOUS EXPENSE	2104	CD	78161	880.25	0		0 4/8/2021	3265	2132	PENNSYLV. 2021 ACTIVE MEMBERSHIP DUES		
07424-3110	BEGINNING BALANCE							0					
07424-3110	MUNIC.AUTH.-AUDITING	2102	CD	77571	2525	0		0 2/26/2021	3253	808	MAILLIE F# PROGRESS BILLING AUDIT EGT MUN.AUTH		
07424-3110	MUNIC.AUTH.-AUDITING	2103	CD	77949	5317	0		0 3/24/2021	3263	808	MAILLIE F# FINANCIAL STMTS. & AUDIT 2020		
07424-3110	MUNIC.AUTH.-AUDITING	2104	CD	78451	2158	0		0 4/29/2021	3271	808	MAILLIE F# BAL. DUE RE: MUNICIPAL AUTH. 2020	AUDIT	
07424-3130	BEGINNING BALANCE							0					
07424-3130	ENGINEERING SERVICES	2101	CD	77095	66	0		0 1/12/2021	3243	1052	PENNONI # SERVICES THRU 12/6/20 GEN.SERVICES		
07424-3130	ENGINEERING SERVICES	2102	CD	77394	3031.25	0		0 2/9/2021	3245	1052	PENNONI # SERVICE THRU 12/31/20 2020 GEN.SERV		
07424-3130	ENGINEERING SERVICES	2103	CD	77786	2973	0		0 3/10/2021	3259	1052	PENNONI # SERVICES THRU 2/14/21 2020 CHAP.94		
07424-3130	ENGINEERING SERVICES	2104	CD	78252	11300.81	0		0 4/15/2021	3268	1052	PENNONI # SERVICES THRU 3/21/21 RCSTP CAUSTIC	SODA CONVERSION	
07424-3140	BEGINNING BALANCE							0					
07424-3140	LEGAL SERVICES	2103	CD	77786	840	0		0 3/10/2021	3258	528	GAWTHRC LEGAL SERV. - DECEMBER 2020		
07424-3140	LEGAL SERVICES	2104	CD	78252	2437.1	0		0 4/15/2021	3267	528	GAWTHRC LEGAL SERVICE - 2/5-2/9/21 GEN.AUTH		
07429-1501	BEGINNING BALANCE							0					

Municipal Authority  
April 2021 YTD Financials

Account #	Description	Per	Src	Trx#	Debits	Credits	Balance	Date	Check#	ID #	Name	Description	Description 2
07429-1501	BARKWAY PUMP STATION CAPITAL		2104 CD	78252	5117	0	0	4/15/2021	3266		356 DECKMAN REBUILT HYDROMATIC PUMPS		
07429-1503	BEGINNING BALANCE						0						
07429-1503	HERSHEYS MILL PUMP STATION CAPITAL		2103 CD	77786	5815.53	0	0	3/10/2021	3259		1052 PENNONI / SERVICES THRU 2/14/21 HM ESTATES		SEWER DESIGN & PERMITTING
07429-1503	HERSHEYS MILL PUMP STATION CAPITAL		2104 CD	78252	2786	0	0	4/15/2021	3266		356 DECKMAN REBUILT HYDROMATIC PUMPS		
07429-1503	HERSHEYS MILL PUMP STATION CAPITAL		2104 CD	78359	-91.96	0	0	4/26/2021	3269		293 COLONIAL CRED. RE: PARALLEL REEL AXLE		
07429-1504	BEGINNING BALANCE						0						
07429-1504	HUNT CO PUMP STATION CAPITAL		2104 CD	78252	6831	0	0	4/15/2021	3266		356 DECKMAN REBUILT HYDROMATIC PUMPS		
07429-1505	BEGINNING BALANCE						0						
07429-1505	RCSTP CAPITAL		2102 CD	77394	462	0	0	2/9/2021	3244		813 MAIN LINE 2 YDS CONCRETE 4000 PSI		
07429-1505	RCSTP CAPITAL		2102 CD	77394	5552.5	0	0	2/9/2021	3245		1052 PENNONI / SERVICE THRU 1/17/21 HERSH.MILL		ESTATES SEWER REPLACEMENT
07429-1505	RCSTP CAPITAL		2102 CD	77394	5766.4	0	0	2/9/2021	3246		550 XYLEM DE1 8X50' HEAVY DUTY LAYFLAT HOSE		
07429-1505	RCSTP CAPITAL		2102 CD	77433	1647	0	0	2/12/2021	3247		293 COLONIAL HAMMOND ELECTRIC BOX		
07429-1505	RCSTP CAPITAL		2102 CD	77433	7004.16	0	0	2/12/2021	3248		598 HANSON A 203.31 TONS 1/4 STONE		
07429-1505	RCSTP CAPITAL		2102 CD	77433	472.5	0	0	2/12/2021	3249		1849 HICKS BRO 63 SMALL BALES OF STRAW		
07429-1505	RCSTP CAPITAL		2102 CD	77433	127.05	0	0	2/12/2021	3250		739 KNOX EQU MULCHER RENTAL1/21/21 HIBBERD LANE		
07429-1505	RCSTP CAPITAL		2102 CD	77433	2258	0	0	2/12/2021	3251		3151 TRENCHTE SHORE RENT & NYLON LIFTING SLING		1/7-1/20/21
07429-1505	RCSTP CAPITAL		2102 CD	77433	3527.2	0	0	2/12/2021	3252		550 XYLEM DE1 DRI-PRIME PUMP, HOSES & SUCTION		SCREEN RENTAL
07429-1505	RCSTP CAPITAL		2102 CD	77620	542.92	0	0	3/1/2021	3254		293 COLONIAL PVC CONDUITS, PANELS, LOCKNUTS &		VARIOUS ELECTRICAL PARTS
07429-1505	RCSTP CAPITAL		2102 CD	77620	1112.2	0	0	3/1/2021	3255		1668 EXETER SU MAX ADAPTERS (4)		
07429-1505	RCSTP CAPITAL		2102 CD	77620	14066	0	0	3/1/2021	3256		1876 FOLEY INC. TRACK LOADER RENTAL 1/11-1/20/21		
07429-1505	RCSTP CAPITAL		2103 CD	77786	5761	0	0	3/10/2021	3257		1876 FOLEY INC. EXCAVATOR, COUPLER & BUCKET RENTAL		1/11-1/28/21 HIBBERD LANE
07429-1505	RCSTP CAPITAL		2103 CD	77786	4372.69	0	0	3/10/2021	3259		1052 PENNONI / SERVICES THRU 2/14/21 RCSTP CAUSTIC		SODA CONVERSION
07429-1505	RCSTP CAPITAL		2103 CD	77786	24.09	0	0	3/10/2021	3260		1983 YALE ELEC NON-METALLIC CONNECTORS, COUPLING &		BLACK WIRING
07429-1505	RCSTP CAPITAL		2103 CD	77949	922.95	0	0	3/24/2021	3262		765 LEC - LENN RACK FOR FLOW METER - HIBBERD		
07429-1505	RCSTP CAPITAL		2104 CD	78252	18377.72	0	0	4/15/2021	3268		1052 PENNONI / SERV. THRU 3/21/21 HM ESTATES SEWER		
07429-1505	RCSTP CAPITAL		2104 CD	78359	401.6	0	0	4/26/2021	3269		293 COLONIAL PVC CONDUITS, BELL ENDS, STEEL LOCK		NUTS & POLE RISERS
07429-1505	RCSTP CAPITAL		2104 CD	78359	617.02	0	0	4/26/2021	3270		550 XYLEM DE1 SALES TAX RE: INVOICE #401064279		
07491-5001	BEGINNING BALANCE						0						
07491-5001	Bank Fees		2102 EX	77369	34.5	0	0	2/9/2021	77369	1	REIMB. S/R Bank Fees		
07491-5001	Bank Fees		2102 JE	77346	34.5	0	0	2/8/2021	REVERSE		REVERSE & BANK FEE CHARGES		
07491-5001	Bank Fees		2103 EX	77652	34.5	0	0	3/2/2021	77652	1	REIMB.S/R Bank Fees		
07491-5001	Bank Fees		2104 EX	78095	34.5	0	0	4/1/2021	78095	1	REIMB.S/R Bank Fees		

# Westtown Way P/S



369 East Park Drive  
Harrisburg, PA 17111  
Phone: (717) 564-1121  
Fax: (717) 564-1158

VALUE ENGINEERING - OPINION OF PROBABLE CONSTRUCTION COST ESTIMATE  
FOR  
WESTTOWN WAY PUMP STATION IMPROVEMENTS PROJECT - CONTRACT WW-1  
WEST GOSHEN SEWER AUTHORITY  
MARCH 2021

ITEM NO.	DESCRIPTION	EST. QTY.	UNIT PRICE	UNIT	EXTENSION
<b>GENERAL</b>					
1	Mobilization (8%)	1	\$ 116,989.06	LS	\$ 116,990.00
2	Bonds & Insurance (4.5%)	1	\$ 65,806.35	LS	\$ 65,810.00
3	Bypass Pumping	60	\$ 3,000.00	DAY	\$ 180,000.00
4	Demolition of Existing Structures	1	\$ 15,000.00	LS	\$ 15,000.00
<b>SITE WORK</b>					
5	Erosion and Sediment Controls	1	\$ 10,000.00	L.S.	\$ 10,000.00
6	Pump Station Site Preparation/Grading	1	\$ 20,000.00	L.S.	\$ 20,000.00
7	Pump Station Site 2A Aggregate	294	\$ 45.00	SY	\$ 13,250.00
8	Pump Station Site Paving	294	\$ 58.00	SY	\$ 17,077.78
9	Platform for Generator	1	\$ 70,000.00	L.S.	\$ 70,000.00
10	Platform for Electrical Gear	1	\$ 60,000.00	L.S.	\$ 60,000.00
11	New Concrete Entrance to Building	1	\$ 5,000.00	L.S.	\$ 5,000.00
12	Retaining Wall Modifications	1	\$ 15,000.00	L.S.	\$ 15,000.00
13	Chain Link Fencing around Electrical Gear	200	\$ 17.00	LF	\$ 3,400.00
14	Swing Gate	2	\$ 5,000.00	EA	\$ 10,000.00
15	Vegetative Restoration	1	\$ 13,000.00	L.S.	\$ 13,000.00
16	Stream Bank Restoration/Flood Resiliency	1	\$ 150,000.00	L.S.	\$ 150,000.00
17	Bollard Installation	5	\$ 450.00	EA	\$ 2,250.00
18	Influent Manhole Modifications for Bypass Pumping	1	\$ 10,000.00	LS	\$ 10,000.00
<b>PUMP BUILDING</b>					
<b>FIRST FLOOR MODIFICATIONS</b>					
19	Floor Demolition	1	\$ 15,000.00	L.S.	\$ 15,000.00
20	Beam Pockets	6	\$ 1,000.00	EA.	\$ 6,000.00
21	Structural Steel	8000	\$ 5.00	LBS.	\$ 40,000.00
22	Grating	100	\$ 50.00	S.F.	\$ 5,000.00
23	Grout	1	\$ 7,500.00	L.S.	\$ 7,500.00
24	Replace Windows	1	\$ 3,000.00	L.S.	\$ 3,000.00
25	Installation	1	\$ 76,500.00	L.S.	\$ 76,500.00
<b>INTERMEDIATE FLOOR MODIFICATIONS</b>					
26	Floor Demolition	1	\$ 20,000.00	L.S.	\$ 20,000.00
27	Structural Steel	2300	\$ 5.00	LBS.	\$ 11,500.00
28	Grating	100	\$ 50.00	S.F.	\$ 5,000.00
29	Grout	1	\$ 2,500.00	L.S.	\$ 2,500.00
30	Existing Concrete Floor Beam Strengthening & Connections	1	\$ 12,000.00	L.S.	\$ 12,000.00
31	Installation	1	\$ 51,000.00	L.S.	\$ 51,000.00
<b>PUMP FLOOR MODIFICATIONS</b>					
32	Floor Demolition	1	\$ 20,000.00	L.S.	\$ 20,000.00
33	Structural Steel/Pipe Supports	2300	\$ 5.00	LBS.	\$ 11,500.00
34	Pump Supports	3	\$ 2,500.00	L.S.	\$ 7,500.00
35	Installation - Structural Items	1	\$ 19,000.00	L.S.	\$ 19,000.00
36	Replace Floor Drain Piping	100	\$ 50.00	S.F.	\$ 5,000.00
37	Repair Infiltration from Wet Well In Dry Well	1	\$ 5,000.00	L.S.	\$ 5,000.00
38	Dry-Pit Pump Installation	3	\$ 10,000.00	EA.	\$ 30,000.00
39	Suction Header & Discharge Piping	1	\$ 62,830.88	L.S.	\$ 62,840.00
40	16" Magnetic Flow Meter	1	\$ 17,556.00	EA.	\$ 17,556.00
41	12" Gate Valve	3	\$ 5,232.00	EA.	\$ 15,696.00
42	14" Gate Valve	2	\$ 16,312.50	EA.	\$ 32,625.00
43	16" Gate Valve	4	\$ 17,694.00	EA.	\$ 70,776.00
44	12" Check Valve	3	\$ 15,500.00	EA.	\$ 46,500.00
45	6" Surge Relief Valve	1	\$ 8,992.50	EA.	\$ 8,992.50
46	Core Drill Wet Well	1	\$ 1,200.00	EA.	\$ 1,200.00
<b>HOIST SYSTEM</b>					
47	Structural Steel	6000	\$ 5.00	LBS.	\$ 30,000.00
48	Demolition of Existing Structures	1	\$ 5,000.00	L.S.	\$ 5,000.00

49	Overhead Wire Rope Hoist	1	\$ 40,000.00	L.S.	\$ 40,000.00
50	Installation	1	\$ 30,000.00	L.S.	\$ 30,000.00
<b>LOUVRE REMOVAL</b>					
51	Louvre Removal	1	\$ 1,500.00	L.S.	\$ 1,500.00
52	CMU Infill	190	\$ 30.00	S.F.	\$ 5,700.00
<b>OTHER</b>					
53	Painting & Protective Coatings	1	\$ 20,000.00	L.S.	\$ 20,000.00
54	Replace all HVAC equipment	1	\$ 50,000.00	L.S.	\$ 50,000.00
55	Replace plumbing drainage piping on interior of building	1	\$ 5,000.00	LS	\$ 5,000.00
<b>WET WELL</b>					
56	Concrete First Floor Slab Repairs	1	\$ 5,000.00	L.S.	\$ 5,000.00
57	Access Hatch	1	\$ 3,000.00	EA.	\$ 3,000.00
58	Concrete Spall Repairs	200	\$ 150.00	S.F.	\$ 30,000.00
59	Repair/Replace Cast Iron Drain Piping	1	\$ 2,000.00	L.S.	\$ 2,000.00
60	Dimminutor Installation	1	\$ 5,000.00	L.S.	\$ 5,000.00
61	Channel Modifications for Dimminutor	1	\$ 8,000.00	L.S.	\$ 8,000.00
62	Combustible Gas Detection System	1	\$ 12,000.00	L.S.	\$ 12,000.00
63	Davit Crane Assembly and Base	1	\$ 7,000.00	EA.	\$ 7,000.00

<b>SUBTOTAL</b>	\$ 1,645,170.00
<b>CONTINGENCY (10%)</b>	\$ 164,520.00
<b>COST INDEX INFLATION (10%)</b>	\$ 164,520.00
<b>TOTAL</b>	\$ 1,974,210.00
<b>SAY</b>	\$ 1,975,000.00

Note: Cost estimate is based on preliminary process design and conceptual structural and electrical design and includes an increase in 10% costs based on recent increases in construction materials (inflation)

<b>GENERAL CONSTRUCTION ESTIMATE</b>	\$ 1,975,000.00
<b>ELECTRICAL CONSTRUCTION ESTIMATE</b>	\$ 560,000.00
<b>EQUIPMENT PROCUREMENT ESTIMATE</b>	\$ 1,130,000.00
<b>CONSTRUCTION TOTAL ESTIMATE</b>	\$ 3,665,000.00



Herbert, Rowland & Grubic, Inc.  
Engineering & Related Services

AN EMPLOYEE-OWNED COMPANY

369 East Park Drive  
Harrisburg, PA 17111  
Phone: (717) 564-1121  
Fax: (717) 564-1158

OPINION OF PROBABLE CONSTRUCTION COST ESTIMATE  
FOR

WESTTOWN WAY PUMP STATION IMPROVEMENTS PROJECT - CONTRACT NO. WW-2  
WEST GOSHEN SEWER AUTHORITY  
MARCH 2021

ITEM NO.	DESCRIPTION	EST. QTY.	UNIT COST	UNIT	EXTENSION
<b>GENERAL</b>					
1	Mobilization & General Conditions @10%	1	\$ 43,000.00	LS	\$ 43,000.00
<b>SITE WORK</b>					
2	Demolition of Existing Electrical Systems	1	\$ 20,000.00	LS	\$ 20,000.00
3	XP LEP Lighting in Wetwell	1	\$ 2,000.00	LS	\$ 2,000.00
4	XP Rated Conduit & Wiring in Wetwell	1	\$ 6,000.00	LS	\$ 6,000.00
5	Interior Light LED Replacement	1	\$ 10,000.00	LS	\$ 10,000.00
6	250HP VFD	3	\$ 54,000.00	EA	\$ 162,000.00
7	Emergency Shutdown Switches for Pumps	1	\$ 3,000.00	LS	\$ 3,000.00
8	New Power Distribution Panels to Replace MCC	1	\$ 25,000.00	LS	\$ 25,000.00
9	Installation of Procured Generator/ATS	1	\$ 40,000.00	LS	\$ 40,000.00
10	*Medium Voltage Service Gear	1	\$ 120,000.00	LS	\$ 120,000.00
11	Control Panel Installation	1	\$ 5,000.00	LS	\$ 5,000.00
12	Site Lighting	1	\$ 5,000.00	LS	\$ 5,000.00
13	Misc Electrical Conduit, Wire, and Work.	1	\$ 25,000.00	LS	\$ 25,000.00

**SUBTOTAL** \$ 466,000.00

**CONTINGENCY (10%)** \$ 46,600.00

**COST INDEX INFLATION (10%)** \$ 46,600.00

**TOTAL** \$ 559,200.00

**SAY** \$ 560,000.00

**CONSTRUCTION TOTAL** \$ 3,665,000.00

Note: Cost estimate is based on preliminary process design and conceptual structural and electrical design

\* It may be required for WGSA to replace and continue to use medium voltage service. The utility will only provide a padmount transformer for this service and they will not install this on any type of platform. The highest grade elevation on the property appears to be at the end of the drive. Preliminary review of floodplain maps appear to show this area in floodplain, indicating that an elevated platform is likely required for new service to be above floodplain. The cost proposed by utility to extend the primary to a location at the end of the access drive at the highest point of elevation was proposed to be \$160K +/- 40% (\$224k max). This would not include the contractor cost for the ductbank from this pad-mount transformer installed near the access drive entry. The ductbank from the building to this pad-mount would likely be about \$80K due to the 1000A ampacity of the circuit. It is understood that WGSA's preference is to remove the medium-voltage service responsibility. This does not seem feasible at this site and medium voltage service is being recommended to comply with utility requirements and bring the service gear above floodplain.





Herbert, Rowland & Grubic, Inc.  
Engineering & Related Services  
AN EMPLOYEE-OWNED COMPANY

369 East Park Drive  
Harrisburg, PA 17111  
Phone: (717) 564-1121  
Fax: (717) 564-1158

OPINION OF PROBABLE CONSTRUCTION COST ESTIMATE

FOR

WESTTOWN WAY PUMP STATION IMPROVEMENTS PROJECT - COSTARS PROCURED EQUIPMENT

WEST GOSHEN SEWER AUTHORITY

MARCH 2021

ITEM NO.	DESCRIPTION	EST. QTY.	UNIT COST	UNIT	EXTENSION
<b>PROCURED EQUIPMENT</b>					
1	Flygt Pumps	3	\$ 264,437.15	LS	\$ 793,311.45
2	Generator and ATS	1	\$ 181,125.00	LS	\$ 181,125.00
3	Control Panel	1	\$ 62,000.00	LS	\$ 62,000.00
4	Franklin Miller Dimminutor	1	\$ 93,150.00	LS	\$ 93,150.00

TOTAL \$ 1,129,586.45

SAY \$ 1,130,000.00

CONSTRUCTION TOTAL \$ 3,665,000.00

Main Office  
6198 Butler Pike-Suite 150  
Blue Bell, PA 19422  
(P) 215.628.9936  
(F) 215.628.9979  
CoStars Contract Number: 016-104  
Vendor Number 118870



# CoStars Quote

**To:** West Goshen Township Municipal Authority – attn: Mr. Michael Moffa  
**From:** Art Auchenbach  
**CC:** Franklin Miller (Tom Zangoglia), HRG (Chelsea Pierce, Cory Salmon, Josh Fox), Riordan (Anna Marie Damiani, Holly Stauber, Mariann London)  
**Date:** April 15, 2021  
**Re:** Riordan CoStars Quote 20210415AA- Westtown Way PS Dimminutor and Pumps

Dear Mike and Chelsea,

As discussed with HRG, following and attached is our CoStars proposal and supporting information for your Westtown Way Pump Station.

Pricing as follows:

Franklin Miller Dimminutor:  
List price \$68,210.00  
CoStars price \$61,500.00

Flygt Pumps:  
List price \$472,950.00  
CoStars price \$425,600.00

*\$ 100,000.00 Less Than anticipated  
Need to order by July 1st or 40% increase*

- Attached, please find:
1. Franklin Miller Proposals 51473 (4 Pages)
  2. Flygt Scope of Supply (1 Page)
  3. RMC Terms & Conditions (2 pages)

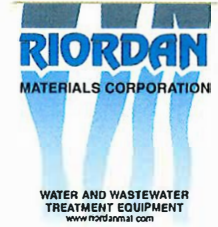
**PLEASE NOTE THAT FLYGT WILL BE ISSUING AN 8% COST INCREASE STARTING JULY 1, 2021. WE WILL NEED THIS ORDER SIGNED AND PLACED BEFORE JULY 1!!**

We trust this information is helpful. Should this proposal be satisfactory, please fill out and sign the attached (see page 3) and/or direct a purchase order to Riordan Materials Corporation. Please let us know if you need any further information. Thank you Mike!

Very truly yours,

*Art Auchenbach*  
Arthur W. Auchenbach III, P.E.  
Partner





**CoStars Contract Number: 016-104**  
**Vendor Number: 118870**

**TO:** West Goshen Township Municipal Authority – attn: Mr. Michael Moffa

April 15, 2021

**REF:** West Goshen Township Municipal Authority  
Riordan CoStars Quote 20210415AA- Westtown Way PS Dimminutor and Pumps

Total price for equipment listed above:	<b>Franklin Miller:</b>	<b>\$ 61,500.00</b>
	<b>Flygt Pumps:</b>	<b>\$425,600.00</b>
	<b>TOTAL:</b>	<b>\$487,100.00</b>

F.O.B. seller's factory or distribution center with freight allowed to jobsite.  
Prices are exclusive of any applicable taxes or duties.

<b>SHIPMENT:</b> Franklin Miller Grinder:	12-13 weeks After Receipt of Approved Submittals
Flygt Pumps:	16-18 weeks After Receipt of Approved Submittals

**TERMS OF PAYMENT:** Net 30 Days after shipment

**CONTRACT CONDITIONS:**

The prices quoted in this Proposal will remain firm for a period of thirty (30) days from after which they are subject to change without notice. Shipping promises contained herein are estimates only, based on Franklin Miller's best judgment.

This Proposal is subject to Riordan Materials Corporation standard terms and conditions, enclosed herewith. Notwithstanding any inconsistent, additional or different terms contained in your purchase order or other documents supplied by you, this Proposal is expressly conditioned on your agreement to the terms hereof and of the company's Standard General Conditions Form.

This Proposal consists of 10 pages.

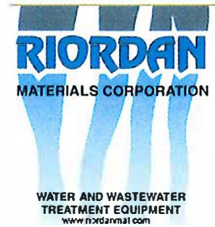
Proposed by: Art Auchenbach	Of: Riordan Materials Corporation
	6198 Butler Pike, Suite 150
	Blue Bell, PA 19422
	Phone: 215-628-9936

Date: April 15, 2021

<input checked="" type="checkbox"/> Main Office 6198 Butler Pike-Suite 150 Blue Bell, PA 19422 (P) 215.628.9936 (F)215.628.9979	<b>Riordan Materials Corporation</b>
--	--------------------------------------



CoStars Contract Number: 016-104  
Vendor Number: 118870



**RIORDAN MATERIALS CORPORATION ORDER ACCEPTANCE FORM**

**PROJECT NAME:** West Goshen Township Municipal Authority – Westtown Way Pump Station  
Riordan CoStars Quote 20210415AA- Westtown Way PS Dimminutor and Pumps

**BILLING NAME:** \_\_\_\_\_  
**CONTACT:** \_\_\_\_\_  
**PHONE #:** \_\_\_\_\_  
**EMAIL:** \_\_\_\_\_  
**COSTARS MEM ID** \_\_\_\_\_

**BILLING ADDRESS:** \_\_\_\_\_  
\_\_\_\_\_  
\_\_\_\_\_

**SHIP TO ADDRESS:** \_\_\_\_\_  
\_\_\_\_\_  
\_\_\_\_\_

**SHIPPING CONTACT:** \_\_\_\_\_  
**PHONE #:** \_\_\_\_\_

**TAX EXEMPT:** \_\_\_\_\_  
(Yes/No)  
**IF YES, PLEASE INCLUDE A COPY OF YOUR TAX EXEMPTION CERTIFICATE**

**TERMS & CONDITIONS:** This form must be completed and returned to Riordan Materials Corporation prior to order entry. No order entry or submittal preparation will occur without this form completed in its entirety, and it may be terminated as a result. Payment terms are 90% Net 30 days of invoice date – balance due within 30 days after start-up. Invoices are generated per shipment. Riordan Materials Corporation requires at least two weeks’ notice to schedule start-up date(s) and 90% payment on ALL invoices, regardless of payment terms above, one week prior to start-up.

**There will be NO EXCEPTIONS to these rules without prior written consent from Riordan Materials Corporation.**

Accepted this date: \_\_\_\_\_ 20 \_\_\_\_\_

Accepted by Riordan Materials Corporation

Company: \_\_\_\_\_

Date: \_\_\_\_\_ 20 \_\_\_\_\_

By: \_\_\_\_\_

By: \_\_\_\_\_

Title: \_\_\_\_\_

Title: \_\_\_\_\_

<input type="checkbox"/> Main Office 6198 Butler Pike-Suite 150 Blue Bell, PA 19422 (P) 215.628.9936 (F)215.628.9979	<b>Riordan Materials Corporation</b>
---	--------------------------------------

**RESOLUTION  
OF THE EAST GOSHEN MUNICIPAL AUTHORITY  
CHESTER COUNTY, PENNSYLVANIA**

A RESOLUTION THAT DECLARES THE OFFICIAL INTENT OF THE EAST GOSHEN MUNICIPAL AUTHORITY (THE "MUNICIPAL AUTHORITY") TO REIMBURSE EXPENDITURES FOR CERTAIN CAPITAL PROJECTS FROM THE PROCEEDS OF A GUARANTEED REVENUE NOTE (THE "NOTE") THAT THE MUNICIPAL AUTHORITY EXPECTS TO ISSUE WITHIN THE NEXT TWELVE MONTHS AND THAT DECLARES THE INTENT OF THE MUNICIPAL AUTHORITY TO COMPLY WITH THE REIMBURSEMENT REGULATIONS OF THE INTERNAL REVENUE CODE.

WHEREAS, certain capital projects (the "Project") consisting of (i) Modifications to the Westtown Way Pump Station (ii) Improvements to portion of the collection system located in Hershey Mill Estates, and (iii) the payment of the costs of issuance of the Note, will benefit the citizens of East Goshen Township and the Township residents served by the public sewer system; and

WHEREAS, the incurrence of non-electoral debt by the Municipal Authority is necessary to fund the Project; and

WHEREAS, the Municipal Authority expects to issue a Guaranteed Revenue Note (the "Note") within the next twelve (12) months to fund the costs of the Project; and

WHEREAS, the Municipal Authority expects to incur costs of the Project before the issuance of the Note.

NOW, THEREFORE, BE IT RESOLVED BY THE BOARD OF THE EAST GOSHEN MUNICIPAL AUTHORITY, THAT:

This Resolution constitutes a statement of official intent under the Treasury Regulations §1.150-2, T.D. 8476 (the "Reimbursement Regulations") of the *Internal Revenue Code* (the "Code") to reimburse the Municipal Authority from the proceeds of the Note the expenditures for

the Project, incurred by the Municipal Authority no more than sixty (60) days prior to the adoption of this Resolution and prior to the issuance of the Note. The Municipal Authority reasonably expects to pay costs of the Project from general operating funds prior to the issuance of the Note, and the Municipal Authority reasonably expects to issue the Note. The Municipal Authority does not reasonably expect any source of funds, other than the Note, to be available to pay the costs of the Project. The expectations set forth in this Resolution are consistent with the financial and budgetary circumstances and plans of the Municipal Authority. The Municipal Authority reasonably expects the maximum principal amount of obligations expected to be issued for the Project to total approximately \$2 million.

The Municipal Authority shall reimburse only expenditures on the Project incurred no more than sixty (60) days prior to the adoption of the Reimbursement Resolution. This limitation shall not apply to the reimbursement of qualified “preliminary expenditures” as defined in the Reimbursement Regulations provided that the amount of preliminary expenditures shall not exceed 20% of the par amount of the Note.

A copy of the text of this Resolution may be examined by any citizen in the office of the Secretary of the Municipal Authority located in the East Goshen Township Municipal Building, 1580 Paoli Pike, West Chester, Pennsylvania 19380, Monday through Friday between the hours of 8:00 A.M. and 5:00 P.M.

All Resolutions or parts of resolutions not in accord with this Resolution are hereby repealed insofar as they conflict herewith.

(Signatures on next page)



IN WITNESS WHEREOF, we, the undersigned authorized officials of the East Goshen Municipal Authority, Chester County, Commonwealth of Pennsylvania, have hereunto set our signatures and affixed hereto the Seal of the Municipal Authority.

Dated: \_\_\_\_\_, 2021

\_\_\_\_\_  
Dana Pizarro  
Chairman  
East Goshen Municipal Authority

[Seal]

ATTEST:

\_\_\_\_\_  
Walter Wujcik  
Secretary  
East Goshen Municipal Authority

F:\Data\Shared Data\ABC'S\Municipal Authority\Resolutions\Reimbursement Resolution 020821.docx

**EAST GOSHEN MUNICIPAL AUTHORITY**

**INSTALLMENT NOTE**

For value received, I/We, (Owner) Robert L & Amanda Gionfriddo, jointly and severally, promise to pay to the order of EAST GOSHEN TOWNSHIP MUNICIPAL AUTHORITY, the sum of Seven Thousand One Hundred Forty Eight Dollars (\$7,148) as payment of the Sewer Tapping Fee for the property at 1577 Colonial Lane, West Chester, PA 19380.

Payment shall be made in Twenty-Four (24) equal successive monthly installments of Two Hundred Ninety-Seven Dollars and Eighty-Four Cents (\$297.84). The first payment shall be made on first day of the month following completion of the sewer connection and subsequent monthly installments shall be paid on the same day of each succeeding calendar month until all payments have been made. A late payment of Twenty-Five Dollars (\$25.00) shall be imposed for each monthly payment not paid when due. The Owner shall have the right to pay the entire balance due at any time. The entire balance shall be payable in full upon any transfer or conveyance of my/our property being served by the East Goshen Township sewer system, the tapping fee for which is being financed by this note.

I/We do hereby empower any attorney of any court of record within the United States or elsewhere to appear for me/us and after one or more declarations filed, confess judgement against me/us as of any term for the above sum, with costs of suit and attorney's fees, for collection and release of all errors and without stay of execution and inquisition and extension upon any levy on real estate is hereby waived and condemnation agreed to, and the exemption of personal property from levy and sale on any execution hereon is also hereby expressly waived and no benefit of exemption be claimed under and by virtue of any exemption law now in force or which may be hereafter passed.

WITNESS my/our hand(s) and seal(s) this \_\_\_\_\_ day of \_\_\_\_\_, 2021.

IN WITNESS WHEREOF, the parties have caused these presents to be executed the day and year first above written.

ATTEST:

EAST GOSHEN MUNICIPAL AUTHORITY

\_\_\_\_\_

By: \_\_\_\_\_

ATTEST:

Robert L. Gionfriddo

\_\_\_\_\_

By: \_\_\_\_\_

ATTEST:

Amanda Gionfriddo

\_\_\_\_\_

By: \_\_\_\_\_

**TOWNSHIP OF EAST GOSHEN**  
**CHESTER COUNTY, PENNSYLVANIA**

**ORDINANCE NO. \_\_\_\_\_**

**AN ORDINANCE AMENDING CHAPTER 188, SECTION 40, OF THE CODE OF EAST GOSHEN TOWNSHIP, CHESTER COUNTY, PENNSYLVANIA, AMENDING LOCAL DISCHARGE LIMITS FOR INDUSTRIAL WASTEWATER DISCHARGES.**

**NOW THEREFORE BE IT ENACTED AND ORDAINED**, by the authority of the Board of Supervisors of the Township of East Goshen (the "Board") as follows:

**SECTION 1.** Chapter 188 "Sewers", Section 40.B "Local discharge limits", subparagraphs (1) through (7) shall be replaced in their entirety as follows:

**(1)** Local discharge limits shall be calculated to prevent interference; pass-through; the discharge of toxic materials in toxic amounts; threats to worker health and safety; physical, chemical or biological damage to the sewerage system; and noncompliance with the Municipal Authority's NPDES permit or the West Goshen Township Sewer Authority's NPDES permit (in the case where the user is connected to the West Goshen Township Sewerage System). No discharge of wastewater containing in excess of the following maximum concentrations shall be permitted:

<b>Parameter</b>	<b>Maximum Concentrations from User Connections (mg/L)</b>
Arsenic	0.21
Cadmium	0.035
Chromium	0.90
Copper	0.20
Cyanide	0.008
Lead	0.06
Mercury	0.001
Molybdenum	2.20
Nickel	1.02
Oil and Grease	100
Selenium	0.14
Silver	0.33
Zinc	0.90
Phenols (total)	0.20

**(2)** Concentrations apply at the point where the wastewater is discharged to the sewer system and represent a monthly average unless otherwise stated in the permit, as per § 188-46. For users subject to categorical standards, categorical concentrations apply at the end of the process wastestream. All concentrations for metallic substances are for "total" metal unless indicated otherwise. At its discretion, the Township may impose mass limitations in addition to or in place of the concentration based limitations above.

**(3)** All wastewater entering the Township's sewer system shall be pretreated by the user to normal domestic levels for the following parameters unless otherwise stated in writing by the Township by way of a permit. These levels shall be:

- a) Biological Oxygen Demand (BOD<sub>5</sub>): 335 mg/L
- b) Total Suspended Solids (TSS): 320 mg/L
- c) Ammonia Nitrogen: 32 mg/L
- d) Total Kjeldahl Nitrogen (TKN): 48 mg/L
- e) pH: 6-9
- f) Total Phosphorus: 9.1 mg/L
- g) Total Dissolved Solids (TDS): 3401 mg/L

**(4)** In cases where any user requires greater than five percent of the treatment plant's capacity on an average daily mass basis, or for other good cause, more stringent limitations may be imposed.

**(5)** Discharging any pollutant in excess of a local discharge limit established for that pollutant shall be a violation of this article.

**(6)** The Pretreatment Coordinator may develop best management practices (BMPs), by ordinance or in individual wastewater discharge permits, to implement local limits and the requirements of §188-37. [Added 2-17-2009 by Ord. No. 129-C-09]

## Industrial User Permit Application

Date:	Tax Parcel #:	Zoning District:
Industrial User Name:		
Industrial User Address:		
Authorized Representative Name:	Authorized Representative Title:	
Authorized Representative Phone Number:	Authorized Representative Fax Number:	
Contact Name:	Contact Title:	
Contact Phone Number:	Contact Fax Number:	

### Pretreatment Information (as per §188-46.B):

1. Description of the industry and manufacturing processes/operations that occur and the types of products produced:

---

---

---

2. Applicable Standard Industrial Classification Codes:

---

---

3. Is the industry subject to compliance with National Categorical Pretreatment Standards?

Yes

No

If yes, list which ones:

---

4. Indicate and describe the sources of or the processes that produce industrial wastewaters:

---

---

---

5. Wastewater constituents and characteristics:

---

---

---

6. Discharge Volume: \_\_\_\_\_

7. Methods of measuring flow volume, including the time and duration of the discharge and the average daily and 30-minute peak wastewater flow rates, including monthly and seasonal variations (if any):

---



---



---

8. Description of any wastewater treatment facilities or processes use or proposed to be used to treat the industrial wastes prior to discharge into the sewer system:

---



---

9. Quantity of sludges removed from the facility system: \_\_\_\_\_

10. Method of sludge disposal: \_\_\_\_\_

11. Location of sludge disposal: \_\_\_\_\_

12. Describe any other wastes removed from the facility system, including their quantities and methods and locations of disposal:

---



---



---

**In addition to the above questions, please provide the following items:**

Schematic flow diagram depicting existing and proposed sources of industrial wastewater and the on-site treatment processes	<input type="checkbox"/>
List of raw materials used or stored on the premises, including: <ul style="list-style-type: none"> <li>• What the raw material is used for</li> <li>• Approximate monthly quantities used</li> <li>• Applicable material safety data sheets</li> </ul>	<input type="checkbox"/> <input type="checkbox"/> <input type="checkbox"/> <input type="checkbox"/>
Plans and specifications for a sampling manhole	<input type="checkbox"/>
List of any additional environmental control permits held by or for the facility (i.e. air quality, RCRA, or stormwater management permits)	<input type="checkbox"/>



East



FYI

We're back!  
In-person  
meeting!

# SPRING MANAGEMENT WORKSHOP

Wednesday, June 9 • The Hershey Lodge • 8:15am - 1pm

**8:15 - 9am**

**Registration/Welcome**

---

**9 - 9:30am**

**PMAA Legislative/Regulatory Update**

- Jennie Shade, PMAA

PMAA Government Relations staff will provide a comprehensive overview of Association government relations activities including enacted state law, tracked legislation currently under consideration in the Pennsylvania House and Senate, upcoming federal and state agency regulatory and policy initiatives, as well as other related areas of interest.

---

**9:30 - 10am**

**Biosolids Permit Revision**

- Trudy Johnston, Material Matters

DEP is proposing revisions to its biosolids permits (GP-07, GP-08) to include PFAS monitoring requirements as well as a Phosphorous Index.

Learn about:

- General information on Biosolids and Biosolids Permits
  - Why DEP is Proposing Revisions
  - Proposed Changes
  - Timeline for Development and Issuance
- 

**10 - 10:30am**

**Municipal Collections During a Pandemic - What We Have Learned**

- Kevin Buraks, Portnoff Law Associates, LLC

The COVID-19 pandemic created many financial challenges for municipal authorities and their customers. This session will look back on how the pandemic affected delinquent account collections, highlighting the deviations we saw and the collection strategies that were successful.

---

**10:30 - 10:45am**

**Break**

**10:45 - 11:15am**

**Impacts of COVID-19 on the Bidding Environment**

- John Shaffer, PennBid

As managers of the PennBid Program, we have access to a small mountain of data that, when dissected, may benefit authority leaders and their design firms. This presentation is the product of analyzing more than 4,000 public projects from water and sewer authority solicitations over a four-year period. We have been able to determine what, if any, impacts or trends COVID-19 has had on bidding, contracts and the cost of products and services.

---

**11:15 - 11:45am**

**Cyber Security Update**

- Franco Cappa, DHS Cybersecurity and Infrastructure Security Agency

The presenter will discuss water and wastewater operations cybersecurity threats, best practices, and federal services to aid Authorities to be more aware of risks and protect their systems. The presenter will also emphasize the physical protection services their agency also provides as a service.

---

**11:45am - 12:15pm**

**The Benefits of Construction Management for Municipal Capital Improvement Projects**

- Craig Snyder, Gannett-Fleming

Project execution has become increasingly difficult because of stricter regulatory requirements, increasing costs, and aging infrastructure. The presenter plans to share the benefits of construction management and share knowledge on experiences.

---

**12:15 - 12:45pm**

**Solicitors Update**

- Steve Hann, Esq., Hamburg, Rubin, Mullin, Maxwell & Lupin

This session will address recent litigation involving municipal authorities as well as recent federal, state and administrative initiatives that municipal authorities need to be aware of in the future.





# SPRING MANAGEMENT WORKSHOP

Wednesday, June 16 • Seven Springs Mountain Resort • 8:15am - 1pm

Lodging? Call 800-452-2223 & mention "PMAA" for discounted rates.

**8:15 - 9am**

## Registration/Welcome

**9 - 9:30am**

## PMAA Legislative/Regulatory Update

- Jennie Shade, PMAA

PMAA Government Relations staff will provide a comprehensive overview of Association government relations activities including enacted state law, tracked legislation currently under consideration in the Pennsylvania House and Senate, upcoming federal and state agency regulatory and policy initiatives, as well as other related areas of interest.

**9:30 - 10am**

## Risk-Based Capital Improvement Planning

- Liz Lackey, Herbert, Rowland & Grubic, Inc.

The cost of maintaining and replacing infrastructure is high, but the costs of inaction can be even higher. Learn how to pinpoint your investments where they're needed most and position yourself for improved funding eligibility. This presentation will show how to develop a simple risk-based matrix to apply easy-to-use criteria to prioritize improvements for water and wastewater facilities.

**10 - 10:30am**

## Improving Revenue Collections for Utilities

- Gary Sanders, Edmunds GovTech

During the presentation, participants will complete two worksheets that illustrate points in the presentation. These worksheets highlight how much their utility could potentially have to write off when accounts skip out after being cut off for non-payment. This session will also examine alternative payment methods beyond the traditional cash and check payments over the counter or through the mail. Participants will also learn about third party solutions that can assist in reducing bad debt and improving collections.

**10:30 - 10:45am**

## Break

**10:45 - 11:15am**

## Impacts of COVID-19 on the Bidding Environment

- Freddy Lutz, PennBid

As managers of the PennBid Program, we have access to a small mountain of data that, when dissected, may benefit authority leaders and their design firms. This presentation is the product of analyzing more than 4,000 public projects from water and sewer authority solicitations over a four-year period. We have been able to determine what, if any, impacts or trends COVID-19 has had on bidding, contracts and the cost of products and services.

**11:15 - 11:45am**

## Cyber Security Update

- Franco Cappa, DHS Cybersecurity and Infrastructure Security Agency

The presenter will discuss water and wastewater operations cybersecurity threats, best practices, and federal services to aid Authorities to be more aware of risks and protect their systems. The presenter will also emphasize the physical protection services their agency also provides as a service.

**11:45am - 12:15pm**

## Measuring Strategic Planning Goals & Performance with GIS

- Mark Bowen, Lehigh County Authority

Together with GeoDecisions, Lehigh County Authority will describe the implementation of the enterprise GIS that enabled the development of dashboards for measuring performance metrics for management and decision support.

**12:15 - 12:45pm**

## Solicitors Update

- Mike Witherel, Esq., Witherel & Associates

This session will address recent litigation involving municipal authorities as well as recent federal, state and administrative initiatives that municipal authorities need to be aware of in the future.

# Registration

Please check which workshop(s) you will be attending:

- Wednesday, June 9 - The Hershey Lodge  
 Wednesday, June 16 - Seven Springs Mountain Resort

Name: \_\_\_\_\_

Authority/Firm: \_\_\_\_\_

Address: \_\_\_\_\_

City, State & Zip: \_\_\_\_\_ Phone: \_\_\_\_\_

E-mail: \_\_\_\_\_

Name: \_\_\_\_\_

Authority/Firm: \_\_\_\_\_

Address: \_\_\_\_\_

City, State & Zip: \_\_\_\_\_ Phone: \_\_\_\_\_

E-mail: \_\_\_\_\_

Name: \_\_\_\_\_

Authority/Firm: \_\_\_\_\_

Address: \_\_\_\_\_

City, State & Zip: \_\_\_\_\_ Phone: \_\_\_\_\_

E-mail: \_\_\_\_\_

Name: \_\_\_\_\_

Authority/Firm: \_\_\_\_\_

Address: \_\_\_\_\_

City, State & Zip: \_\_\_\_\_ Phone: \_\_\_\_\_

E-mail: \_\_\_\_\_

## Cancellation Policy:

All cancellations must be submitted to the PMAA office in writing one week prior to the meeting date(s). Due to reservation guarantees, unpaid no-shows will be charged. No refunds will be made after the cancellation deadline.

### Member Pricing:

- \$100 before 5/31  
 \$125 after 5/31

### Non-Member Pricing:

- \$150 before 5/31  
 \$160 after 5/31

Check, made payable to PMAA is enclosed.

- Visa  
 Mastercard  
 Discover

### Credit Card:

Card No.: \_\_\_\_\_

Exp.: \_\_\_\_\_

Security code: \_\_\_\_\_

**Online registration is available through the website.**

\*Space availability is subject to state & venue restrictions and limitations.



BOARD OF SUPERVISORS  
EAST GOSHEN TOWNSHIP  
CHESTER COUNTY  
1580 PAOLI PIKE, WEST CHESTER, PA 19380-6199



April 27, 2021

Dear Property Owner:

The purpose of this letter is to inform you that the Township has received a Zoning Hearing Board Application from CTDI, owner of 1365 Enterprise Drive. CTDI is requesting zoning variances for two proposed wall signs for their property at 1365 Enterprise Drive, West Chester, 19380.

CTDI is seeking relief from §240-22 Q.(5) of the Zoning Ordinance, specifically, relief is being requested for:

- (1) the maximum number of signs permitted on a building
  - a. The applicant is seeking relief to install 2 wall signs (the ordinance permits one wall sign per building)
- (2) the maximum area of wall signs
  - a. The applicant is seeking a variance to install wall signs that are approximately 166.8 square feet each, in area. (the zoning ordinance permits a maximum sign area of 100 square feet)

Additionally the applicant is requesting the Zoning Hearing Board grant such other relief as may be necessary in the judgement of the Board to allow each of the proposed wall signs.

All property owners within 1000 feet of the property seeking zoning relief are notified of the meeting dates when the application will be discussed. **The date of the HEARING is as follows:**

**Zoning Hearing Board (Zoning Variance Hearing) – Wednesday, May 26, 2021 @ 7:00 PM**

Due to COVID 19 protocols this hearing will be held virtually. The ZOOM meeting information will be available on the Township website, [www.eastgoshen.org](http://www.eastgoshen.org), no later than May 24<sup>th</sup>. **The application materials are available for review at the Township building during normal business hours.** Call the Township if you have questions on how to observe or participate in the hearing.

Sincerely,

*Mark A. Gordon*

Mark A. Gordon  
Township Zoning Officer



BOARD OF SUPERVISORS  
EAST GOSHEN TOWNSHIP  
CHESTER COUNTY  
1580 PAOLI PIKE, WEST CHESTER, PA 19380-6199

**FYI**

April 27, 2021

Dear Property Owner:

The purpose of this letter is to inform you that the Township has received a Zoning Hearing Board Application from ESKE Development LLC, owner of 1302 Wilson Drive. ESKE Development is requesting a dimensional variance from the rear yard setback requirement for the building located at 1302 Wilson Drive, West Chester, 19380.

ESKE Development is seeking relief from §240-19 G. Lot area, width, building coverage, height and yard regulations. Specifically, the applicant is requesting relief 3.5 feet from the rear yard setback requirement of the ordinance.

All property owners within 1000 feet of the property seeking zoning relief are notified of the meeting dates when the application will be discussed. **The scheduled public meetings for review and potential approval of this application are as follows, AND ARE SUBJECT TO CHANGE WITHOUT ADDITIONAL WRITTEN NOTICE:**

**May 5, 2021** - Planning Commission meeting (7:00 pm, virtually via ZOOM)

**May 11, 2021** - Board of Supervisors meeting (7:00 pm, virtually via ZOOM)

**May 26, 2021** - Zoning Hearing Board (7:00 pm, virtually via ZOOM)

Due to COVID 19 protocols all meetings and hearings will be held virtually. The ZOOM meeting information will be available on the Township website prior to the meeting at, [www.eastgoshen.org](http://www.eastgoshen.org). **The application materials are available for review during normal business hours.** Call the Township if you have questions on how to observe or participate in the meetings and or the hearing.

Sincerely,

*Mark A. Gordon*

Mark A. Gordon  
Township Zoning Officer

BOARD OF SUPERVISORS  
EAST GOSHEN TOWNSHIP

CHESTER COUNTY  
1580 PAOLI PIKE, WEST CHESTER, PA 19380-6199



April 29, 2021

Dear Property Owner:

The purpose of this letter is to inform you that the Township has received a Zoning Hearing Board Application from Albert and Lynn Greto owners of 331 Springhouse Ln. The Greto's are requesting dimensional relief from the height requirement for fencing on residential properties.

Fences are regulated in §240-32 E. of the zoning ordinance. Fences are a permitted use and allowed to be a maximum of 6 feet tall within a side or rear yard of residential properties. Specifically, the applicant is requesting relief to permit fencing they have installed to exceed the height requirements of the ordinance.

All property owners within 1000 feet of the property seeking zoning relief are notified of the meeting dates when the application will be discussed. **The scheduled public meetings for review and potential approval of this application are as follows, AND ARE SUBJECT TO CHANGE WITHOUT ADDITIONAL WRITTEN NOTICE:**

**May 5, 2021** - Planning Commission meeting (7:00 pm, virtually via ZOOM)

**June 1, 2021** - Board of Supervisors meeting (7:00 pm, virtually via ZOOM)

**June 8, 2021** - Zoning Hearing Board (7:00 pm, virtually via ZOOM)

Due to COVID 19 protocols all meetings and hearings will be held virtually. The ZOOM meeting information will available on the Township website prior to the meeting at, [www.eastgoshen.org](http://www.eastgoshen.org). **The application materials are available for review during normal business hours.** Call the Township if you have questions on how to observe or participate in the meetings and or the hearing.

Sincerely,

*Mark A. Gordon*

Mark A. Gordon  
Township Zoning Officer